



Oscar Rodriguez –Account Manager  
[o.rodriquez@aaalandscape.com](mailto:o.rodriquez@aaalandscape.com)  
 (520) 429-7959

After Hours Emergency  
 Please contact.  
 (520) 408-4322



**WEEKLY SCHEDULE – COMPLETED\***



05/12/2025-05/16/2025

#### **Monday-12**

- **Crew 5**
- Week 4 started on thunder sky down to six to Molina
- Wayne moody to zenith
- Cut low hanging branches
- Detailed both side of street and curb strips
- Raked blown and picked up
- Removed weeds from DG

#### **Tuesday- 13**

- **Crew 5 man**
- Week 4 detail on morning sky from Wayne moody to seven generations
- Pulled out weeds from DG
- Detailed all curb strips and trimmed off all suckers off trees
- Cut back any low hanging branches
- Cut off all sucker on trees

#### **Wednesday-14**

- **crew 1 man**
- Trash pick up
- Mailbox locations detailed
- **crew 1 man**
- Mowed all turfs
- **Crew 2 man**
- Detailed around all turf areas with weed eater and hula hoe
- Detailed main entrance

- Trimmed hanging branches and minor shrubs pruning

#### **Thursday-15**

- **crew 5 man**
- Finished detailed to main entrance on seven generations and houghton down to civano
- Trimmed back shrubs and trees in the walk area
- Trimmed off suckers
- Removed weeds
- Started work on loveless gardener
- Raked all debris detailed area with blower
- Trimmed trees lower the 15ft

#### **Friday-16**

- **Crew 5**
- Finished detail work on loveless gardener from thunder sky to zenith
- Cut back low hanging branches from street
- Detailed DG with blower then turned DG with rake
- Detailed cele peterson
- Cut back any low hanging branches
- Detailed DG with blower
- Thunder sky detail completed





---

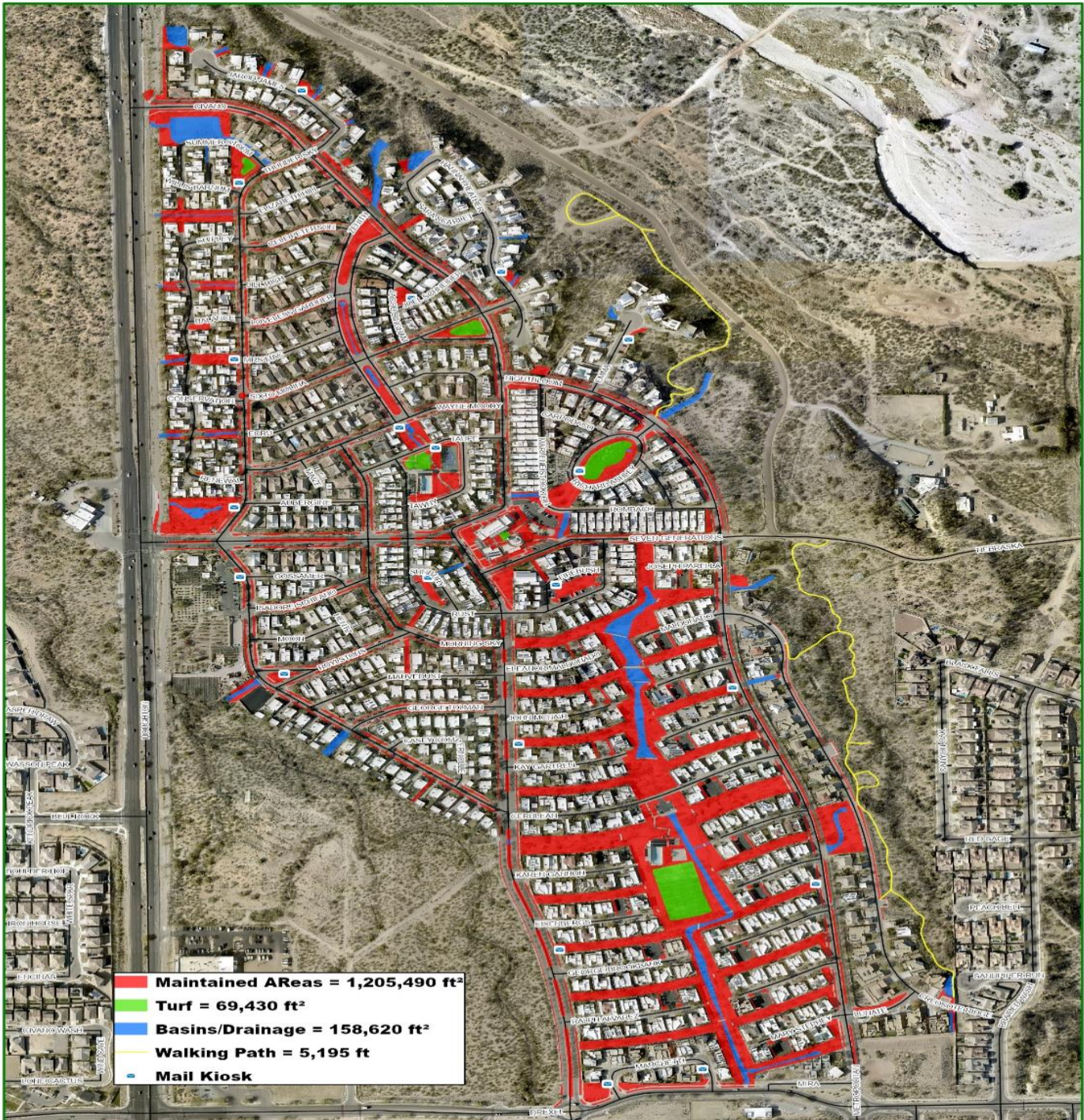
## Points of Interest

1. Monitor turf and plants for irrigation adjustments
2. Make nozzle adjustments
3. Continue with cutbacks where needed
4. Program new irrigation schedule
5. Pull plugs on turf





# Civano Maintenance Map



0 250 500 1,000 Feet

17 December 2024

©2024 Underwood Bros. Inc., dba/AAA Landscape  
10501 E Seven Generations





# Pest Management

## Post-Emergent Areas

Herbicide	EPA #	MIX RATIO	GALLONS USED	ACTIVE INGREDIENT	DATE



## Weekly Photos





