
FLIGHT PLAN & SITE SURVEY

Mission 2026-03-20

March 20, 2026



IMPORTANT NOTICE

Please ensure you have received all required authorizations prior to flight. This Site Survey was created using RPAS Wilco. The user accepts all responsibility for the accuracy of the information.

Terms & Conditions: rpaswilco.com/#tnc

Mission Information

MISSION 2026-03-20

FLIGHT DETAILS

Reference No:	793828
Pilot Name:	
Pilot Certificate:	I
Mission Type:	VLOS
Flight Start:	March 20, 2026 5:21 PM
Flight End:	March 20, 2026 7:21 PM

LOCATION DETAILS

Latitude:	42° 10' 11.31" N (42.17)
Longitude:	83° 2' 49.38" W (-83.047)
Altitude / Radius:	400 ft / 200 m (0.11 nm)
Classification:	UNCONTROLLED
FIR / Contact:	CZYZ / 905-676-4509

REPORT CONTENTS

Site Survey • Obstacles (if available) • Nearby Aerodromes • Canadian Aviation Regulations • GFA • Aerodrome Supplements • METAR & TAF • NOTAMS • CFS

STAY AHEAD IN THE RPAS INDUSTRY

- ✓ New product releases
- ✓ Platform updates
- ✓ Drone industry developments

FOLLOW FOR UPDATES

@RPASWILCO



Flight Map & MODEL Details

MISSION LOCATION SURVEY

MODEL SPECIFICATIONS

MANUFACTURER

Chaos600

MODEL

Bell 206 Longranger

REGISTRATION

C-2

ADVANCED OPS

No

SAFETY ASSURANCE


Controlled Airspace **N/A**

Near People **N/A**

Over People **N/A**

MISSION LOCATION DETAILS

ROLE

 MODEL

LATITUDE

42° 10' 11.31" N
42.17

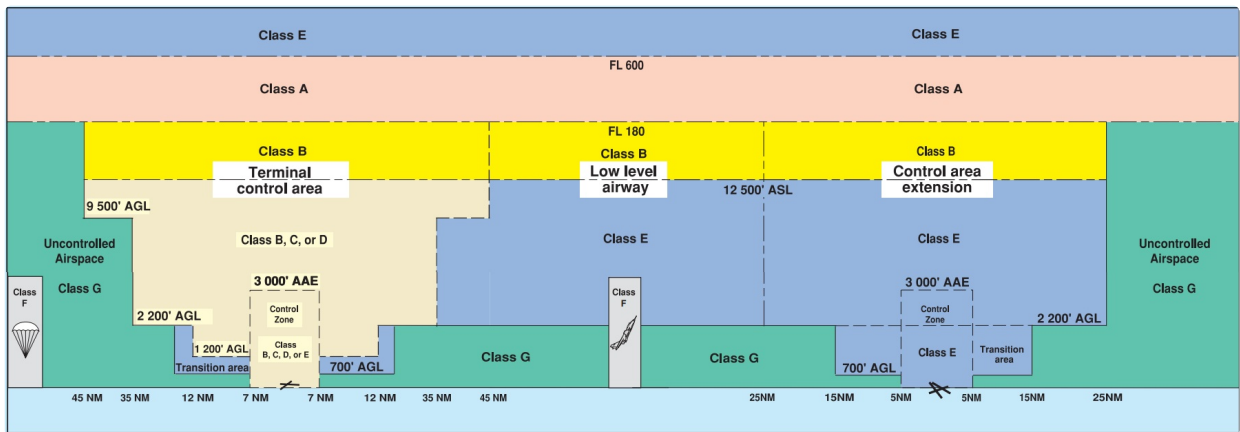
LONGITUDE

83° 2' 49.38" W
-83.047

Airspace Classification

MISSION LOCATION SURVEY

AIRSPACE MAP



OVERLYING AIRSPACES

No Airspace Info Available

NEAREST AERODROMES & DISTANCE FROM OPERATION

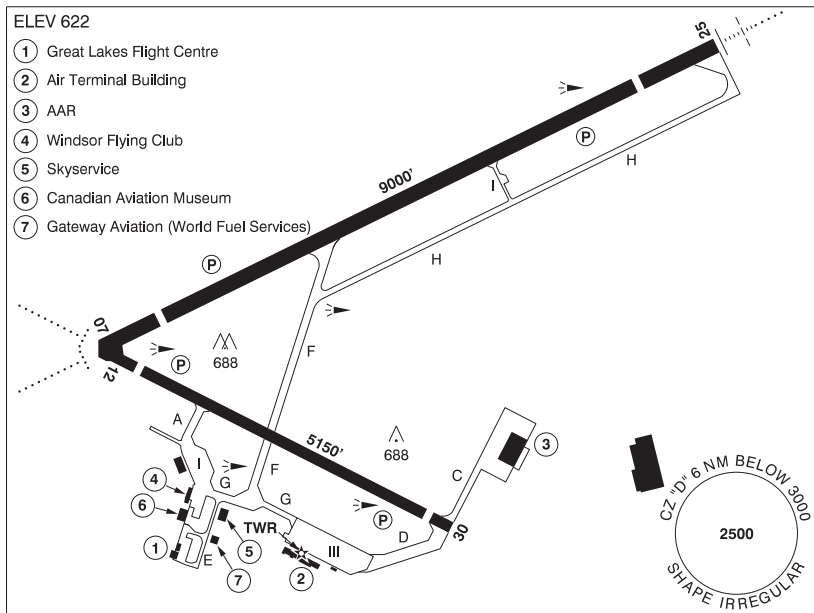
WINDSOR (CYQG - AERODROME - Cert)	Lat: 42.276	Long: -82.955	14.031KM	7.58NM	NE
ESSEX (CNE9 - AERODROME - Reg)	Lat: 42.096	Long: -82.879	16.106KM	8.7NM	SE
HARROW (CGL2 - AERODROME - Reg)	Lat: 42.059	Long: -82.841	20.992KM	11.33NM	SE
BILLING AIRSTRIP (CEB8 - AERODROME - Reg)	Lat: 42.187	Long: -82.782	21.924KM	11.84NM	E
COTTAM (CRB2 - AERODROME - Reg)	Lat: 42.14	Long: -82.653	32.651KM	17.63NM	E

ONTARIO

AERODROME / FACILITY DIRECTORY

WINDSOR ON

CYQG



REF	N42 16 34 W82 57 19 Adj SE 7°W (2011) UTC-5(4) Elev 622' A5000 LO6 HI5 T2 CAP
OPR	Your Quick Gateway (Windsor) Inc. 519-969-2430 10-02Z± Cert
PF	A-2,3,6,7,8 C-4,5
CUST	AOE/325 (450 with staged off loading) 888-226-7277 13-05Z±
FLT PLN	Pilots to open/ close VFR flt plan with London rdo 123.375 or by phone. For altn method to file, close & rcv IFR Flt Pln/clnc see PRO
FIC	London 866-WXBRIEF (Toll free within Canada) or 866-541-4104 (Toll free within Canada & USA)
WX	METAR AUTO H24 (See COMM). TAF H24, issue times: 00, 06, 12, 18Z, WxCam.
SERVICES	Call out chg may be levied for one or more svcs.
FUEL	100LL, JA-1 FSII (avbl), HPR
OIL	All
S	1,2,3,4,5,6
ARFF	PARTICIPATING CAT 5 1030-0315Z±, O/T call out chgs may be levied.
SUP FL	D-ice
JASU	NC-10A/A1/B/C; DC:2000 AMP, 45kW, 28V; AC:90 KVA, 115/200V, 3 phase, 400 Hz.
PVT ADV	Great Lakes Flight Centre 122.95 519-969-7052 and 866-817-5266 Fax 519-969-3205 Air-Way Aviation 129.55 519-972-7244 Fax 519-972-7744 Gateway Aviation (World Aviation Services) 123.5 226-782-3581
MIL CON	Gateway Aviation Windsor 226-782-3581

ONTARIO

AERODROME / FACILITY DIRECTORY

WINDSOR ON (Cont'd)

CYQG

RWY DATA	Rwy 07(070°)/25(250°) 9000x200 ASPH Thld 07 displ 902'. Thld 25 displ 1143' Rwy 12(123°)/30(303°) 5150x150 ASPH Thld 12 displ 570'. Thld 30 displ 321'
RWY CERT	Rwy 07 RVR 1200(1/4sm)/Rwy 25 RVR 1200(1/4sm) AGN IV Rwy 12/30 AGN IIIB
TWY CERT	Twy: E AGN II Twy: I AGN IIIA
TWY RCR	Twy E uncontrolled. Twy I width 50'. 519-791-1663 10-05Z† CRFI Hrs extended as conds or usage warrant. PCN
LIGHTING	07-AD AS(TE HI) P2, 25-AN(TE HI) P2, 12-AD(TE ME) P2, 30-(TE ME) P2 ARCAL-124.7 type K when TWR clsd
COMM	
RCO	London rdo 123.375 (FISE) 126.7(bcst)
ATIS	134.5 12-03Z†
GND	121.7 12-03Z†
TWR	124.7 (E) 12-03Z† (emerg only 519-969-3751)
MF	tfc 124.7 03-12Z† 6NM shape irregular to below 3000 ASL (CAR 602.98)
ARR/DEP	Detroit 118.95 132.35 134.3 284.0 (E)
VFR ADV	Windsor Area-Detroit Apch Ctl 134.3
AWOS	134.5 03-12Z†
NAV	
DME	IQG 110.3 Ch 40 N42 16 52 W82 56 49 (633')
ILS	IQG 110.3 (Rwy 25)
PRO	When oprg VFR over Canadian Territory within the Detroit TCA (see VTPC) ctc Detroit apch ctl 134.3. Avoid Riverside descent area unless authorized by ATC. (Acft departing the Windsor area northbound or enroute to Detroit should remain W of Belle Isle or E of the Windsor class E airspace.) IFR tfc inbound Detroit City Airport Rwy 33 descending within the Riverside Descent Area from 3000 ASL. To file, close & rcv IFR Flt Pln/clnc when oprg in the Detroit TCA, ctc London FIC on 123.375 or by phone 1-866-541-4104. Pilots are requested to avoid flight below 2000 ASL when flying over the Jack Miner Bird Sanctuary (Kingsville ON, N42 04 00 W82 45 00) & over Point Pelee National Park.
CAUTION	Blasting areas may be active Mon-Fri 13-22Z† 1NM radius of N42 09 19 W83 00 21 and N42 05 21 W83 05 06 to 500 AGL. Migratory birds in vic of aprt Mar - May & Oct - Nov.

ONTARIO

AERODROME / FACILITY DIRECTORY

ESSEX ON

CNE9

REF	N42 05 45 W82 52 46 4SW 7°W UTC-5(4) Elev 620' A5000	
OPR	P. & A. Harrington 519-776-7441 Reg	
PF	C-1,2,3,5 D-4,6	
FLT PLN	FIC London 866-WXBRIEF (Toll free within Canada) or 866-541-4104 (Toll free within Canada & USA)	
SERVICES	S 2,3,5	
RWY DATA	Rwy 09/27 1935x70 GRASS TWY Twy at hg entrance only. RCR No win maint. A/D clsd in hvy rain periods. Call ahead to confirm rwy has dried up enough to land on.	
COMM	ATF tfc 122.8 5NM 3600 ASL	
PRO	Pilots are requested to avoid flight below 2000 ASL when flying over the Jack Miner Bird Sanctuary (Kingsville, Ont N42 04 00 W82 45 00) & over Point Pelee National Park.	
CAUTION	Ditches at Thlds 09 & 27 and along rwy sides. Wind shear fr hg with N/NE/NW winds. Trees on apch to Rwy 27. Bldg at edge of Rwy 09/27.	

ONTARIO

AERODROME / FACILITY DIRECTORY

HARROW ON

CGL2

REF	N42 03 34 W82 50 27 3.8ENE 7°W UTC-5(4) Elev 610' A5000	
OPR	Louis & Thérèse Levesque 519-733-2935 Reg PN	
PF	C-1,2 E-3,4,5,6	
FLT PLN	FIC London 866-WXBRIEF (Toll free within Canada) or 866-541-4104 (Toll free within Canada & USA)	
RWY DATA	Rwy 01/19 3000x100 GRASS Thlds 01 & 19 displ 400'. Rwy soft when wet.	
RCR	Opr Ltd win maint	
COMM	ATF tfc 122.9 5NM 3600 ASL	
PRO	Pilots are requested to avoid flt below 2000 ASL when flying over the Jack Miner Bird Sanctuary (Kingsville, Ontario N42 04 W82 45) & over Point Pelee National Park.	
CAUTION	Trees 500' fr Thld Rwy 01, 60 AGL. Marked hydro poles 400' fr Thld Rwy 19 (buried hydro line). Essex A/D 3NM NW.	

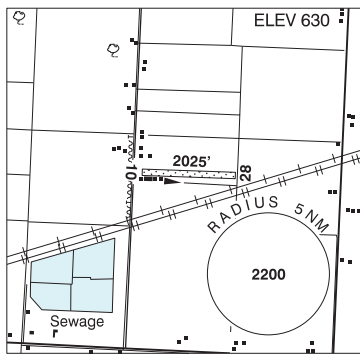
ONTARIO

AERODROME / FACILITY DIRECTORY

ESSEX / BILLING AIRSTRIP ON

CEB8

REF	N42 11 12 W82 46 56 1.9E 7°W UTC-5(4) Elev 630' A5000
OPR	Pam/Erik Billing 519-723-4479 Reg PN
PF	B-1,2 C-3 D-4,6
FLT PLN	FIC London 866-WXBRIEF (Toll free within Canada) or 866-541-4104 (Toll free within Canada & USA)
SERVICES	FUEL 100LL (D) Emerg only OIL 100 Emerg only S 5
RWY DATA	Rwy 10(099°)/28(279°) 2025x100 GRASS
RCR	Opr Ltd win maint. Rwy may be soft when wet.
CAUTION	Water lagoons 1500' SW of Thld 10, possible bird hazard. Ditch at Thld 28. Hydro wires along road near Thld 10. Wind turbine 0.5NM SW of Thld 10 1017 ASL (394 AGL). Numerous wind turbines in vic.



ONTARIO

AERODROME / FACILITY DIRECTORY

COTTAM ON

CRB2

REF	N42 08 24 W82 39 10 4E 7°W UTC-5(4) Elev 635' A5000	<p>The chart shows a 5NM radius circle centered on the aerodrome with an elevation of 2200'. A prominent obstruction is marked at 2000' with a height of 61'. The chart also indicates a 919' obstruction. The aerodrome is located near Kingsville, Ontario, and is adjacent to the Jack Miner Bird Sanctuary and Point Pelee National Park. The chart shows various terrain features, including fields and trees, and a ditch adjacent to runway 01 and 19.</p>
OPR	R. I. Bell 519-839-4369 Reg PPR	
PF	C-1,2 D-3,4,5,6	
FLT PLN	FIC London 866-WXBRIEF (Toll free within Canada) or 866-541-4104 (Toll free within Canada & USA)	
RWY DATA	Rwy 01/19 2000x60 GRASS Thld 01 displ 400'	
RCR	Opr Ltd win maint	
COMM	ATF tfc 122.9 5NM 3600 ASL	
PRO	Pilots are requested to avoid flt below 2000 ASL when flying over the Jack Miner Bird Sanctuary (Kingsville, Ont N42 04 W82 45) & over Point Pelee National Park.	
CAUTION	Bldgs & unmarked poles aprx 400' fr Thld 01. Ditch adj E Thld 01 & 19. Trees on apch to Rwy 01. Cultivated fields at both edges of Rwy 01/19.	

Canadian Aviation Regulations

Division III — General Operating and Flight Rules

For full listing please visit : <https://laws-lois.justice.gc.ca/eng/regulations/SOR-96-433/FullText.html#s-901.27>

Visual Line-of-sight

- **901.11 (1)** Subject to subsection (2), no pilot shall operate a remotely piloted aircraft system unless the pilot or a visual observer has the aircraft in visual line-of-sight at all times during flight.
- **(2)** A pilot may operate a remotely piloted aircraft system without the pilot or a visual observer having the aircraft in visual line-of-sight if the operation is conducted in accordance with a special flight operations certificate — RPAS issued under section 903.03.

Procedures

- **901.23 (1)** No pilot shall operate a remotely piloted aircraft system unless the following procedures are established:
 - **(a)** normal operating procedures, including pre-flight, take-off, launch, approach, landing and recovery procedures; and
 - **(b)** emergency procedures, including with respect to
 - **(i)** a control station failure,
 - **(ii)** an equipment failure,
 - **(iii)** a failure of the remotely piloted aircraft,
 - **(iv)** a loss of the command and control link,
 - **(v)** a fly-away, and
 - **(vi)** flight termination.
- **(2)** If the manufacturer of the remotely piloted aircraft system provides instructions with respect to the topics referred to in paragraphs (1)(a) and (b), the procedures established under subsection (1) shall reflect those instructions.
- **(3)** No pilot shall conduct the take-off or launch of a remotely piloted aircraft unless the procedures referred to in subsection (1) are reviewed before the flight by, and are immediately available to, each crew member.
- **(4)** No pilot shall operate a remotely piloted aircraft system unless the operation is conducted in accordance with the procedures referred to in subsection (1).

Site Survey

901.27 No pilot shall operate a remotely piloted aircraft system unless, before commencing operations, they determine that the site for take-off, launch, landing or recovery is suitable for the proposed operation by conducting a site survey that takes into account the following factors:

- **(a)** the boundaries of the area of operation;
- **(b)** the type of airspace and the applicable regulatory requirements;
- **(c)** the altitudes and routes to be used on the approach to and departure from the area of operation;
- **(d)** the proximity of manned aircraft operations;
- **(e)** the proximity of aerodromes, airports and heliports;
- **(f)** the location and height of obstacles, including wires, masts, buildings, cell phone towers and wind turbines;
- **(g)** the predominant weather and environmental conditions for the area of operation; and
- **(h)** the horizontal distances from persons not involved in the operation.

Operations at or in the Vicinity of an Aerodrome, Airport or Heliport

- **901.47 (1)** No pilot shall operate a remotely piloted aircraft at or near an aerodrome that is listed in the *Canada Flight Supplement* or the *Water Aerodrome Supplement* in a manner that could interfere with an aircraft operating in the established traffic pattern.
- **(2)** Subject to section 901.73, no pilot shall operate a remotely piloted aircraft at a distance of less than
 - **(a)** three nautical miles from the centre of an airport; and
 - **(b)** one nautical mile from the centre of a heliport.
- **(3)** No pilot shall operate a remotely piloted aircraft at a distance of less than three nautical miles from the centre of an aerodrome operated under the authority of the Minister of National Defence unless the operation is conducted in accordance with a special flight operations certificate — RPAS issued under section 903.03.

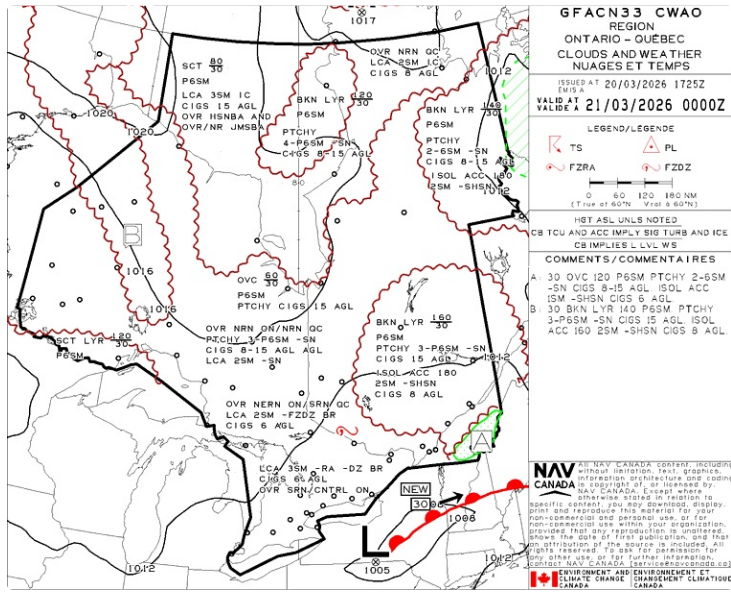
Records

- **901.48 (1)** Every owner of a remotely piloted aircraft system shall keep the following records:
 - **(a)** a record containing the names of the pilots and other crew members who are involved in each flight and, in respect of the system, the time of each flight or series of flights; and
 - **(b)** a record containing the particulars of any mandatory action and any other maintenance action, modification or repair performed on the system, including
 - **(i)** the names of the persons who performed them,
 - **(ii)** the dates they were undertaken,
 - **(iii)** in the case of a modification, the manufacturer, model and a description of the part or equipment installed to modify the system, and
 - **(iv)** if applicable, any instructions provided to complete the work.
- **(2)** Every owner of a remotely piloted aircraft system shall ensure that the records referred to in subsection (1) are made available to the Minister on request and are retained for a period of
 - **(a)** in the case of the records referred to in paragraph (1)(a), 12 months after the day on which they are created; and
 - **(b)** in the case of the records referred to in paragraph (1)(b), 24 months after the day on which they are created.
- **(3)** Every owner of a remotely piloted aircraft system who transfers ownership of the system to another person shall, at the time of transfer, also deliver to that person all of the records referred to in paragraph (1)(b).

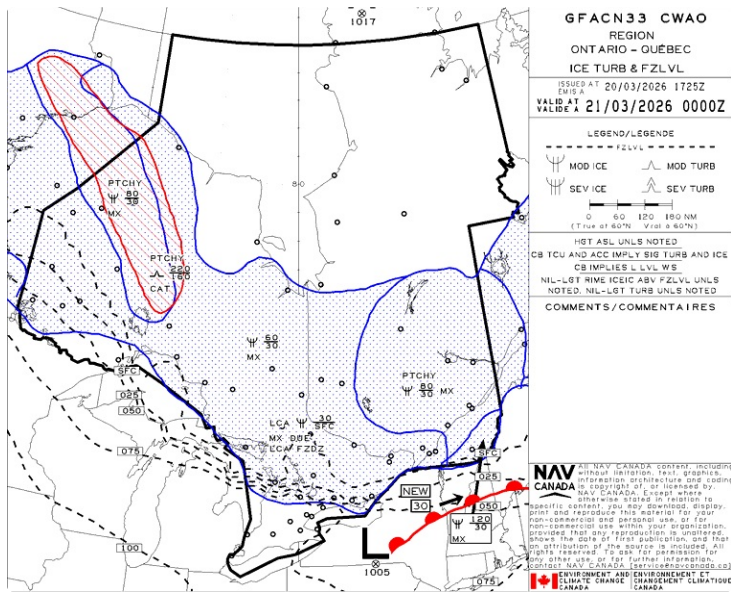
Graphical Area Forecast

ISSUE TIME + 06 HR

CLOUDS AND WEATHER



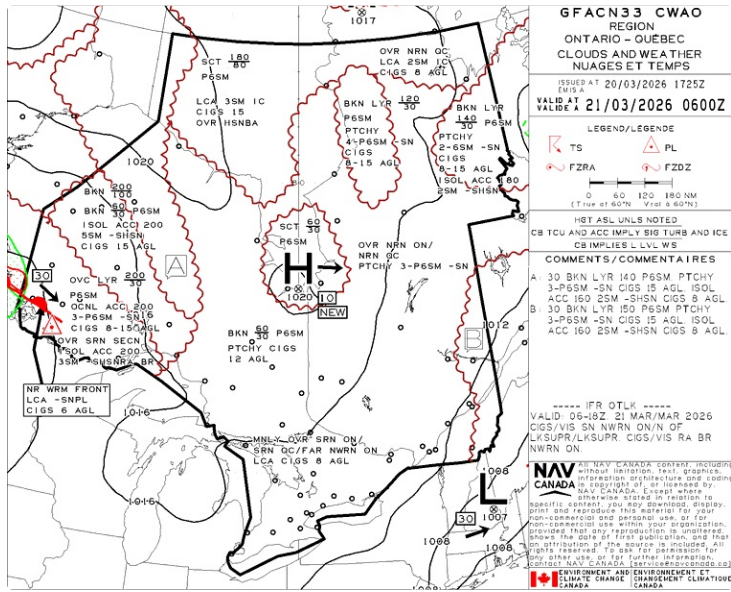
TURBULENCE, ICING AND FREEZING LEVEL



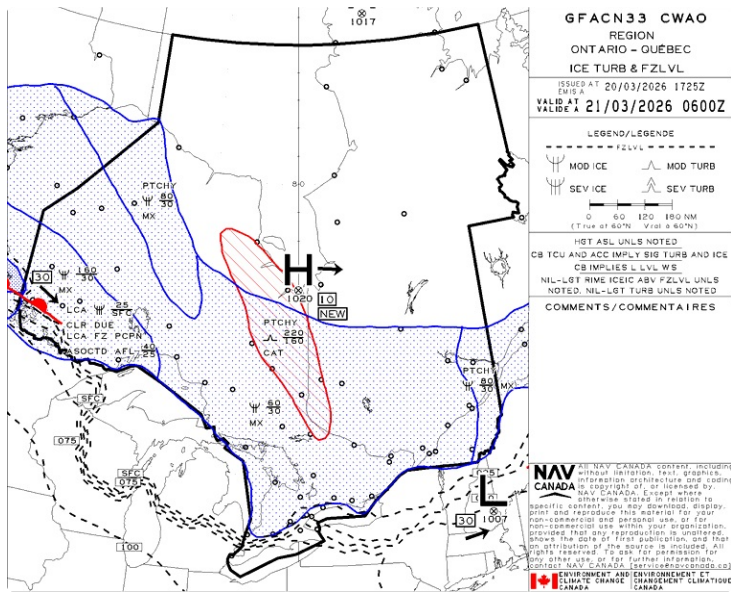
Graphical Area Forecast

ISSUE TIME + 12 HR

CLOUDS AND WEATHER



TURBULENCE, ICING AND FREEZING LEVEL



Aerodrome Information

METAR, TAF & NOTAM

WINDSOR - CYQG - Cert

WEATHER DATA

METAR

SPECI CYQG 202038Z AUTO 04015G21KT 9SM FEW066 19/07 A2967 RMK WSHFT AT 2028Z SLP047 DENSITY ALT 1500FT=

METAR CYQG 202000Z AUTO 32012G19KT 9SM FEW066 22/07 A2965 RMK SLP045 DENSITY ALT 1900FT=

TAF

TAF CYQG 201741Z 2018/2118 23015G25KT P6SM FEW030 OVC080 FM202000 29012G22KT P6SM BKN040 BECMG 2022/2024 36010KT FM210200 04008KT P6SM FEW008 BKN015 PROB30 2102/2112 2SM BR OVC008 FM211200 02005KT 2SM BR BKN005 FM211500 12005KT P6SM SCT012 OVC100 BECMG 2116/2118 15005KT RMK FCST BASED ON AUTO OBS. NXT FCST BY 210000Z=

NOTAM

(S6783/26 NOTAMR S6759/26

Q) CZYZ/QFAXX/IV/NBO/A/000/999/4217N08257W005

A) CYQG B) 2603201926 C) 2603210326

E) RSC 07 6/6/6 DRY, DRY, DRY. VALID MAR 20 1925 - MAR 21 0325.

RSC 25 6/6/6 DRY, DRY, DRY. VALID MAR 20 1925 - MAR 21 0325.

RSC 12/30 DRY. VALID MAR 20 1925 - MAR 21 0325.

ADDN NON-GRF/TALPA INFO:

RMK: TWY ALPHA, CHARLIE, DELTA, ECHO, FOXTROT, GOLF, HOTEL, INDIA, 202603201926, DRY.

RMK: APN APRON I, APRON III, 202603201926, DRY.)

(D0757/26 NOTAMR D0608/26

Q) CZYZ/QFAAH/IV/B0/A/000/999/4217N08257W005

A) CYQG B) 2603201430 C) 2604010200EST

E) AD OPR HR OF OPS: 1030-0300)

(D0633/26 NOTAMR D0583/26

Q) CZYZ/QFFAH/IV/B0/A/000/999/4217N08257W005

A) CYQG B) 2603091454 C) 2604010300EST

E) ACFT RESCUE AND FIRE FIGHTING (ARFF) HR OF OPS: DAILY 0930-0300)

(D0599/26 NOTAMR D4784/25

Q) CZYZ/QFAAH/IV/B0/A/000/999/4217N08257W005

A) CYQG B) 2603050422 C) 2604012000EST

E) RWY COND REPORT (RCR) HR OF OPS: 1030-0300)

(G0497/26 NOTAMR G0258/26

Q) CZYZ/QCAAS/IV/B0/AE/000/999/4217N08257W070

A) CYQG B) 2602271747 C) 2603312359

E) WINDSOR EMERG FREQ 243.0MHZ U/S)

(G0398/26 NOTAMR G0223/26

Q) CZXX/QXXXX/IV/NBO/E/000/999/5245N09040W999

A) CZWG CYZ B) 2602181426 C) 2605192000EST

E) CANADIAN AIR OPERATORS AND OWNERS OF AIRCRAFT REGISTERED IN CANADA ARE ADVISED TO TAKE ALL POTENTIAL RISK INFORMATION INTO ACCOUNT IN THEIR RISK ASSESSMENT AND ROUTING DECISIONS WHEN OPERATING IN FIR MAIQUETIA (SVZM) DUE TO POTENTIAL RISK ASSOCIATED WITH POTENTIAL FOR MILITARY ACTIVITY WITHIN VENEZUELA.)

(D0459/26 NOTAMR D4180/25

Q) CZYZ/QLAAS/IV/NBO/A/000/999/4217N08257W005

A) CYQG B) 2602121347 C) 2605121400EST

E) LOW INTST APCH LGT RWY 07 AND 12 U/S)

(U0233/26 NOTAMN

Q) CZYZ/QOLAS/IV/M/AE/000/009/4214N08253W005

A) CYQG B) 2602102337 C) 2605102359EST

E) OBST LGT U/S TOWER 421424N 0825259W (APRX 3.9NM SE AD) 157FT AGL,

Aerodrome Information

METAR, TAF & NOTAM

ESSEX - CNE9 - Reg

WEATHER DATA

NOTAM

(G0497/26 NOTAMR G0258/26

Q) CXYZ/QCAAS/IV/B0/AE/000/999/4217N08257W070

A) CYQG B) 2602271747 C) 2603312359

E) WINDSOR EMERG FREQ 243.0MHZ U/S)

(G0398/26 NOTAMR G0223/26

Q) CZXX/QXXXX/IV/NB0/E/000/999/5245N09040W999

A) CZWG CXYZ B) 2602181426 C) 2605192000EST

E) CANADIAN AIR OPERATORS AND OWNERS OF AIRCRAFT REGISTERED IN CANADA ARE ADVISED TO TAKE ALL POTENTIAL RISK INFORMATION INTO ACCOUNT IN THEIR RISK ASSESSMENT AND ROUTING DECISIONS WHEN OPERATING IN FIR MAIQUETIA (SVZM) DUE TO POTENTIAL RISK ASSOCIATED WITH POTENTIAL FOR MILITARY ACTIVITY WITHIN VENEZUELA.)

Aerodrome Information

METAR, TAF & NOTAM

HARROW - CGL2 - Reg

WEATHER DATA

NOTAM

(G0497/26 NOTAMR G0258/26

Q) CXYZ/QCAAS/IV/B0/AE/000/999/4217N08257W070

A) CYQG B) 2602271747 C) 2603312359

E) WINDSOR EMERG FREQ 243.0MHZ U/S)

(G0398/26 NOTAMR G0223/26

Q) CZXX/QXXX/IV/NB0/E/000/999/5245N09040W999

A) CZWG CXYZ B) 2602181426 C) 2605192000EST

E) CANADIAN AIR OPERATORS AND OWNERS OF AIRCRAFT REGISTERED IN CANADA ARE ADVISED TO TAKE ALL POTENTIAL RISK INFORMATION INTO ACCOUNT IN THEIR RISK ASSESSMENT AND ROUTING DECISIONS WHEN OPERATING IN FIR MAIQUETIA (SVZM) DUE TO POTENTIAL RISK ASSOCIATED WITH POTENTIAL FOR MILITARY ACTIVITY WITHIN VENEZUELA.)

Aerodrome Information

METAR, TAF & NOTAM

BILLING AIRSTRIP - CEB8 - Reg

WEATHER DATA

NOTAM

(G0497/26 NOTAMR G0258/26

Q) CZYZ/QCAAS/IV/B0/AE/000/999/4217N08257W070

A) CYQG B) 2602271747 C) 2603312359

E) WINDSOR EMERG FREQ 243.0MHZ U/S)

(G0398/26 NOTAMR G0223/26

Q) CZXX/QXXXX/IV/NB0/E/000/999/5245N09040W999

A) CZWG CZYZ B) 2602181426 C) 2605192000EST

E) CANADIAN AIR OPERATORS AND OWNERS OF AIRCRAFT REGISTERED IN CANADA ARE ADVISED TO TAKE ALL POTENTIAL RISK INFORMATION INTO ACCOUNT IN THEIR RISK ASSESSMENT AND ROUTING DECISIONS WHEN OPERATING IN FIR MAIQUETIA (SVZM) DUE TO POTENTIAL RISK ASSOCIATED WITH POTENTIAL FOR MILITARY ACTIVITY WITHIN VENEZUELA.)

Aerodrome Information

METAR, TAF & NOTAM

COTTAM - CRB2 - Reg

WEATHER DATA

NOTAM

(G0497/26 NOTAMR G0258/26

Q) CZYZ/QCAAS/IV/BO/AE/000/999/4217N08257W070

A) CYQG B) 2602271747 C) 2603312359

E) WINDSOR EMERG FREQ 243.0MHZ U/S)

(G0398/26 NOTAMR G0223/26

Q) CZXX/QXXXX/IV/NB0/E/000/999/5245N09040W999

A) CZWG CZYZ B) 2602181426 C) 2605192000EST

E) CANADIAN AIR OPERATORS AND OWNERS OF AIRCRAFT REGISTERED IN CANADA ARE ADVISED TO TAKE ALL POTENTIAL RISK INFORMATION INTO ACCOUNT IN THEIR RISK ASSESSMENT AND ROUTING DECISIONS WHEN OPERATING IN FIR MAIQUETIA (SVZM) DUE TO POTENTIAL RISK ASSOCIATED WITH POTENTIAL FOR MILITARY ACTIVITY WITHIN VENEZUELA.)

(U0165/26 NOTAMR U1904/25

Q) CZYZ/QOLAS/IV/M/AE/000/011/4204N08240W005

A) CXXX B) 2601301936 C) 2604302000EST

E) CRB2 COTTAM

OBST LGT U/S TOWER 420410N 0823958W (APRX 4.3NM SSW AD) 302FT AGL, 1026FT AMSL.)