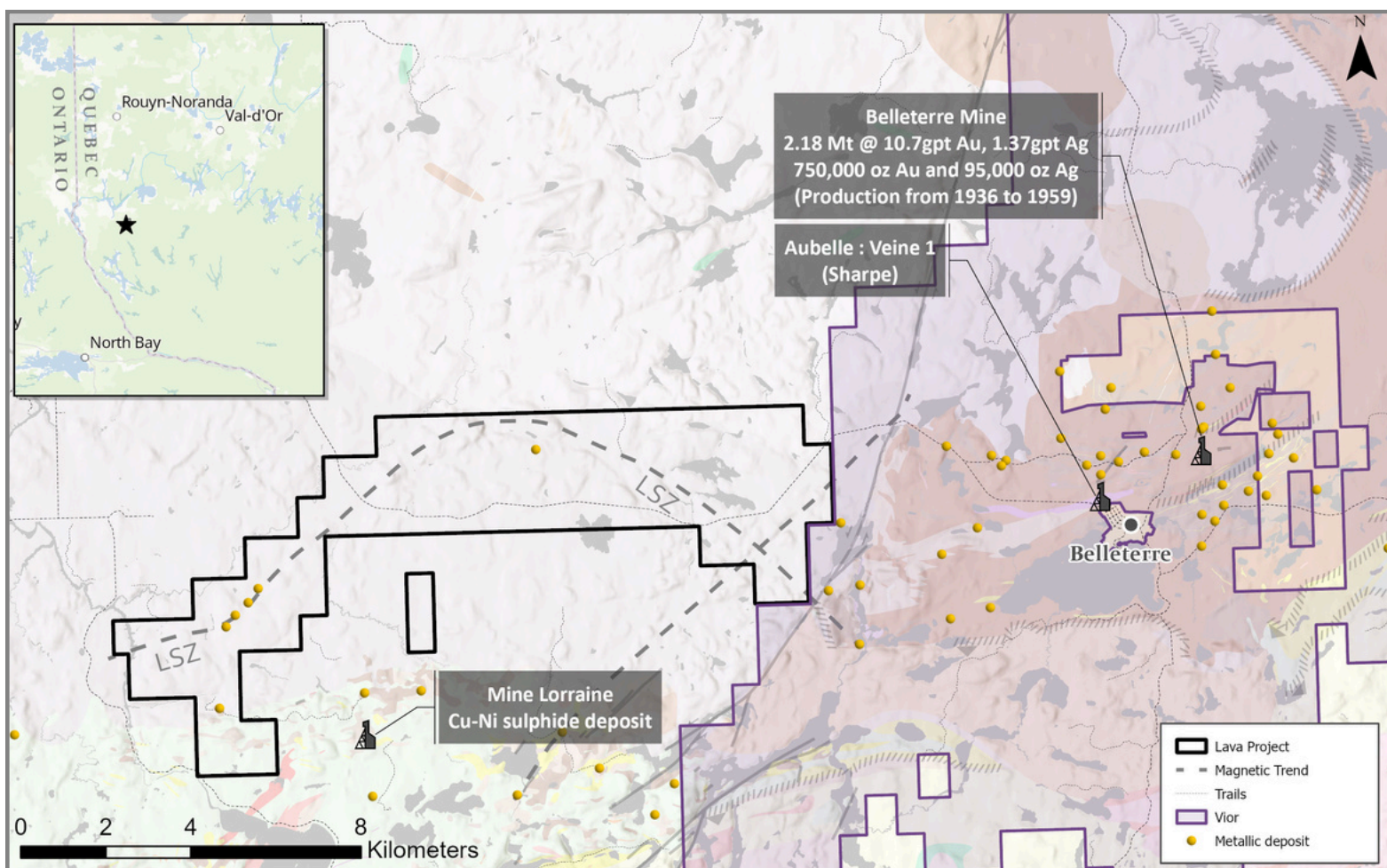
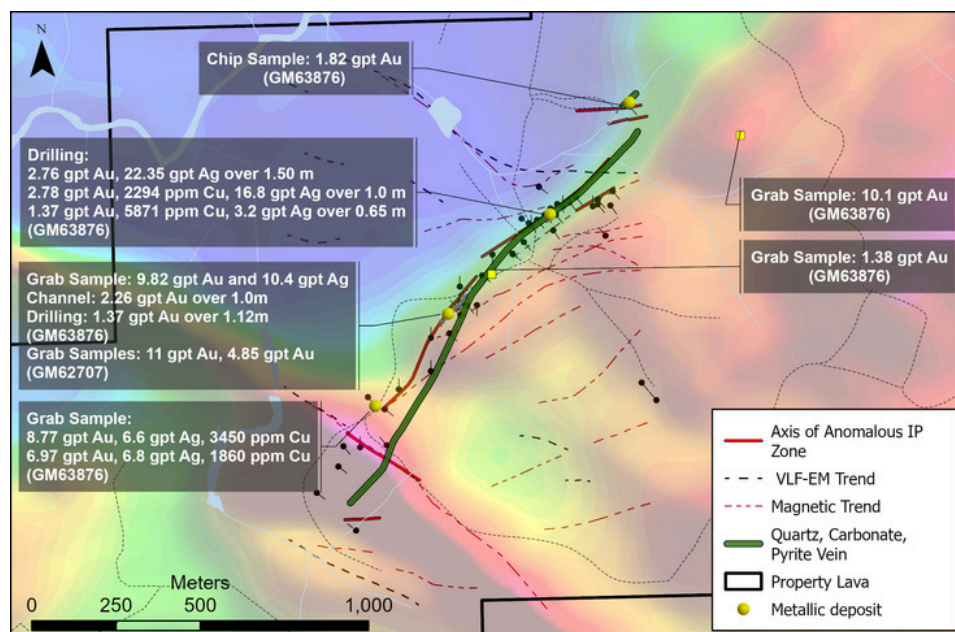


# Lava Gold



The Property covers the Lavallée 38, 39, 40, and 41 showings which consist of a series of gold-bearing quartz-carbonate veins with disseminated pyrite, pyrrhotite and chalcopyrite. The veins occur within a 10.5km long, northeast-trending corridor marked by numerous shear zones. This corridor lies on the eastern contact of a magnetic high and is marked by a strong chargeability anomaly.



## Key Facts

Location:	20km west of Belleterre
Access:	Road access via Route 362
Size:	93 Claims, 5,068ha
Ownership:	100% Vendors
Targets:	Lavallée Shear Zone
Option:	Cash, Shares & work to earn 100% NSR Retained

## Contact

Mark Fekete: 819-354-5244  
mark@breakawayx.com

Marty Huber: 519-998-0971  
marty@breakawayx.com

Link to  
Presentation

