

Project Overview

The 64-claim, 3,720-hectare Bambino property is 20km NE of Ville Marie in the Timiskaming region of Québec. It covers the southern portion of the Baby segment part of the Belleterre-Angliers Greenstone belt, an area predominately underlain by mafic volcanic rocks intruded by mafic sills. The volcanic stratigraphy includes thick layers of pillowed and subordinate massive basalt flows overlain by volcanoclastic sediments; both intruded by gabbro sills. Mineralization in the area is primarily hosted or spatially related to these gabbro sills as: a) primary magmatic sulfide Ni+Cu±PGE mineralization in gabbro (disseminated to massive sulphides), b) remobilized hydrothermal Cu+PGE mineralization (sheared sulphides) and c) volcanogenic, disseminated pyrite mineralization in tuffs. Recent drilling at Alotta and Midrim showings have returned significant high-grade shallow mineralization intersections.

Key Facts

Location & Access:

- 20km NE of Ville Marie, Quebec
- Excellent infrastructure

Size & Ownership:

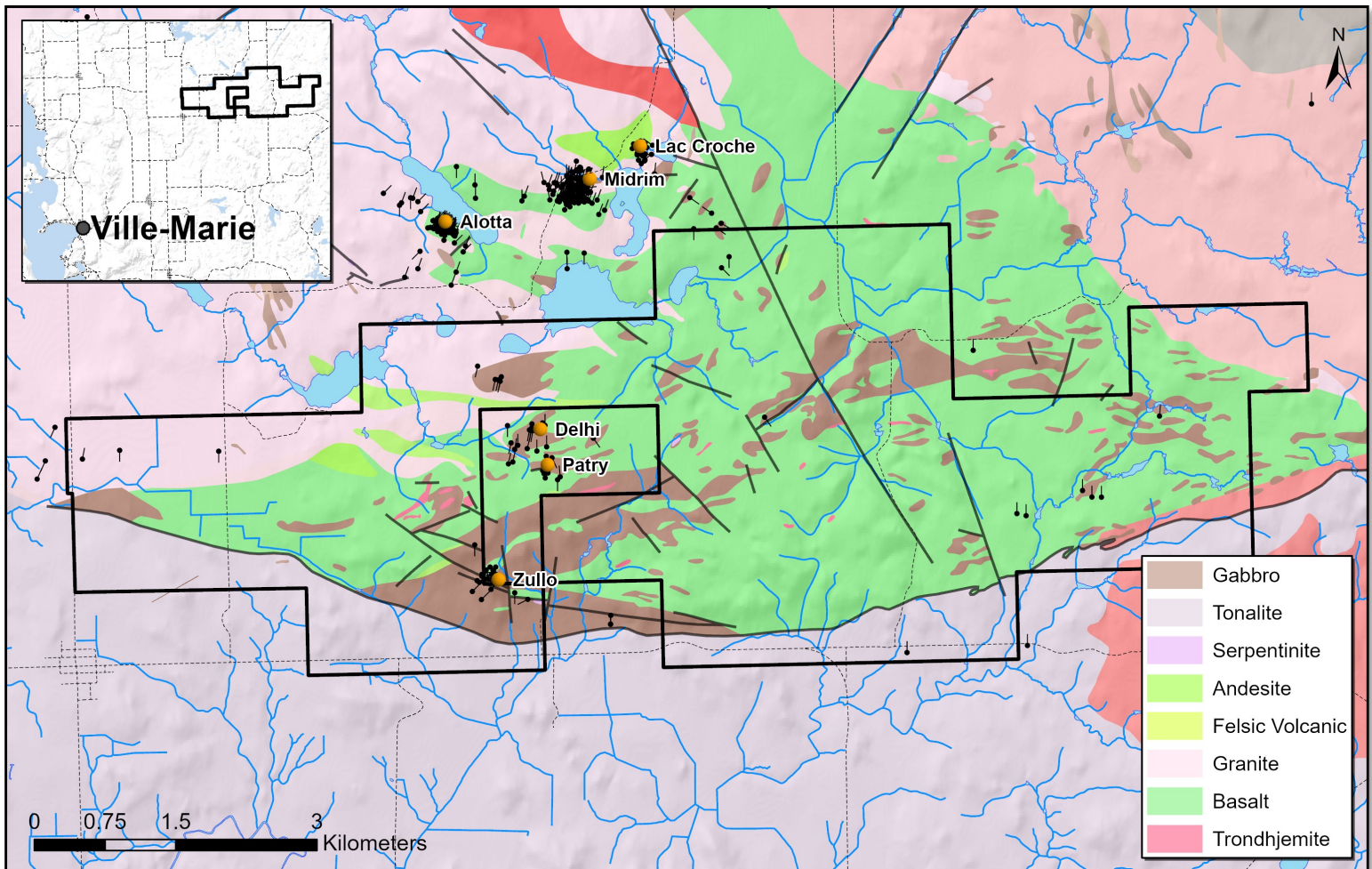
- 64 claims, 3,720 Ha
- 100% Vendors

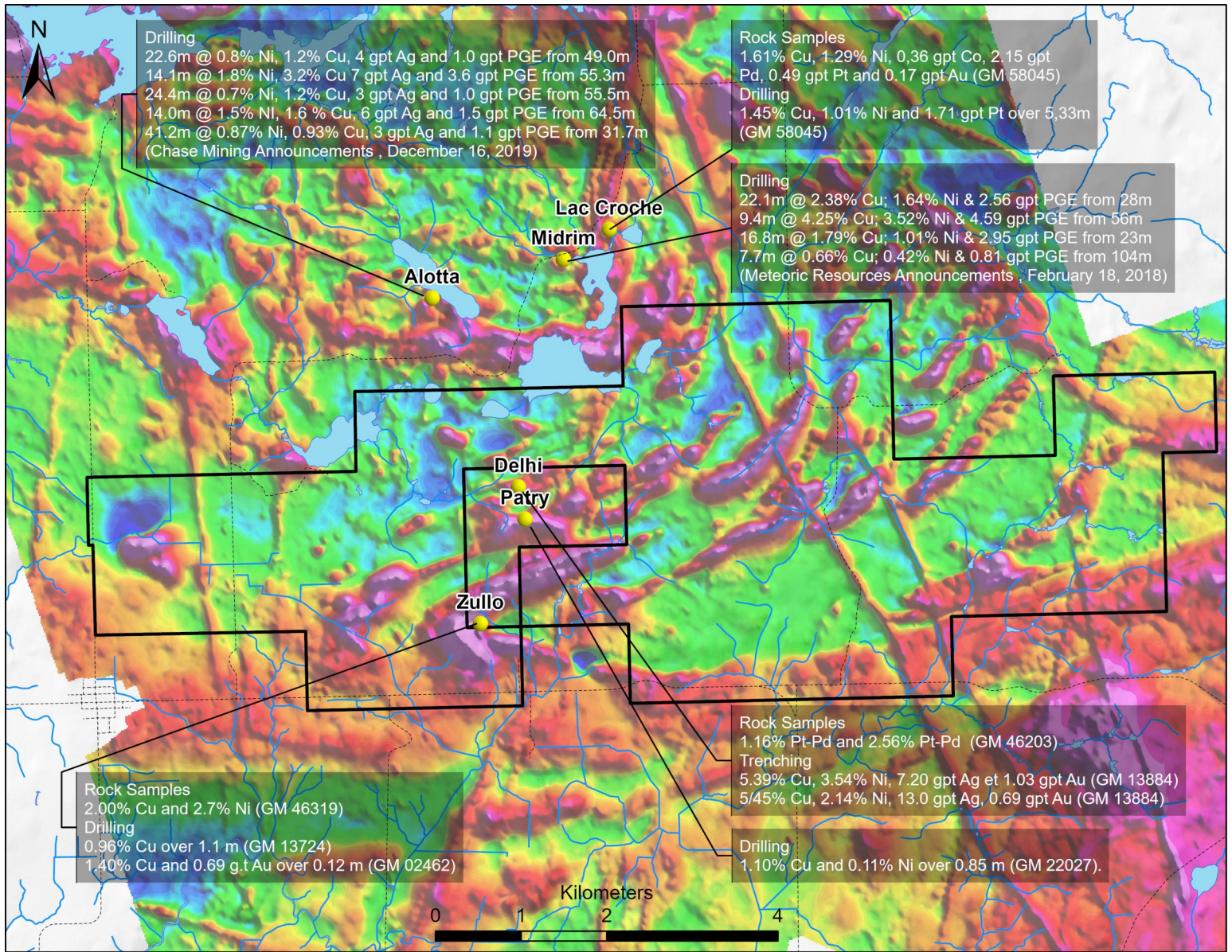
Targets:

- Primary sulphide Ni+Cu±PGE & remobilized Cu+PGE related to gabbro sills

Highlights:

- Immediately adjacent to Midrim, Alotta, Zullo, Delhi, and Patry Ni+Cu±PGE showings





Quebec Advantage

- Up to 38% refundable tax credits on eligible exploration expenditures
- SIDEX, SODOMEX, Fonds solidarité FTQ & Fonds régionaux
- Quebec protects its sovereignty
- First Nations support & invest in mineral exploration

Useful links

- <https://chasemining.com.au/canada/>
- <https://rafaellaresources.com.au/asx-announcements/>

Proposal

Option:

- Cash, shares & work to earn 100%
- NSR retained

Phase I:

- Prospecting & sampling
- Detailed deep auger-type soil geochemistry survey
- MT survey followed by detailed TDEM survey

Phase II:

- Drilling 2500 to 5000m

For more information please contact:

Mark Fekete, 819 354-5244

Marty Huber, 519 998-0971