

## Project Overview

The Vendors hold 100% of the 56-claim "TT" property covering 3,112 hectares in the Eeyou Istchee Baie-James region approximately 25km south of the mining town of Matagami in the Abitibi area of Western Québec, Canada. The property consists of two blocks referred to as "Coupé" block to the north and "Roadster" block to the south. Access is by logging roads from Matagami where basic services are offered including fuel, food and lodgings. The Abitibi is a world class mining district with all exploration services readily available.

## Geology & Exploration Targets

There are two known deposits in the immediate area of the property. The Douay deposit 15km west is estimated to contain resources of 8.6Mt at 1.5gpt indicated and 71.2Mt at 1.0gpt Au.<sup>1</sup> Agnico Eagle Mines Ltd. recently made a \$6.2M strategic investment in this project. The Vezza deposit 5km southwest of the Coupé block is estimated to contain resources of 1.2Mt at 6.5gpt Au measured and indicated and 0.4 Mt @ 4.9gpt Au.<sup>2</sup>

The Coupé block covers the westward extension of a series of occurrences known as the "Dundee Palliser" and "O2" zones where drilling in the mid-1990's intersected 1.2gpt Au over 1.0m<sup>3</sup> and 5.6gpt Au over 4.2m respectively.<sup>4</sup> These zones consist of quartz veins and breccias within sheared, graphitic zones along the contacts of a narrow mafic volcanic unit hosted with banded arkoses and quartzites. This structure is geophysically very active with numerous conductors, magnetic highs and resistivity zones untested by drilling. The Roadster block covers the eastward extension of a shear zone that hosts the "Kerr Addison" occurrence where drilling in 1986 intersected up to 2.8gpt over 2.3m in a zone of quartz veins and breccias within the shear zone.<sup>5</sup> The shear zone separates mafic volcanics to the north from mafic to ultramafic volcanics to the south. Very little previous work has been done on either block with only a few scattered drill holes on each.

## Key Facts

### Location & Access:

- 25km south of Matagami, Québec
- Access by logging roads leaving Highway 109

### Size & Ownership:

- 51 claims, 2,856 hectares
- 100% Vendors

### Targets:

- Archean Orogenic-type gold related to regional east-trending faults

## Proposal

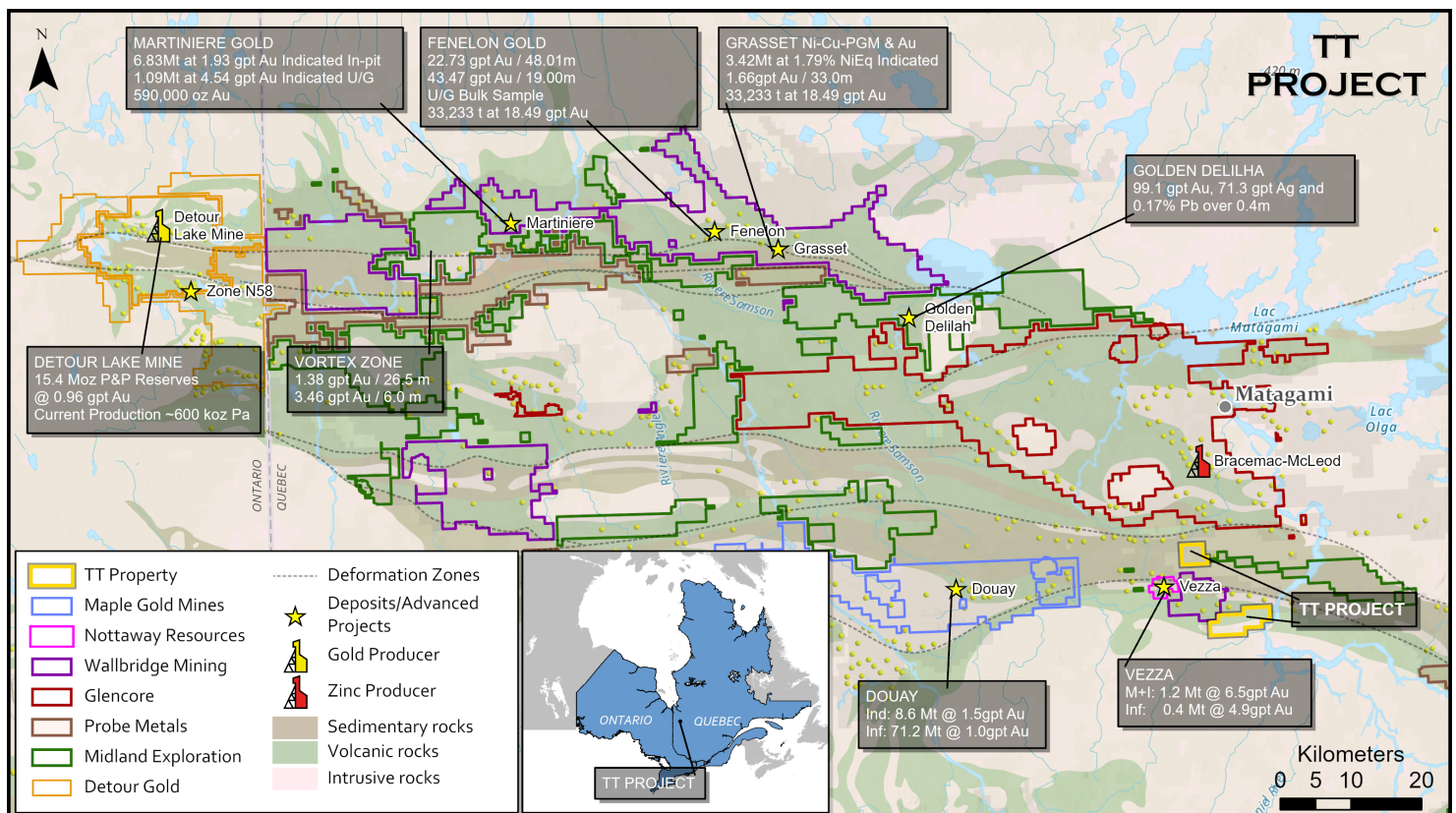
### Option:

- Cash, shares & work to earn 100%
- 3% NSR retained

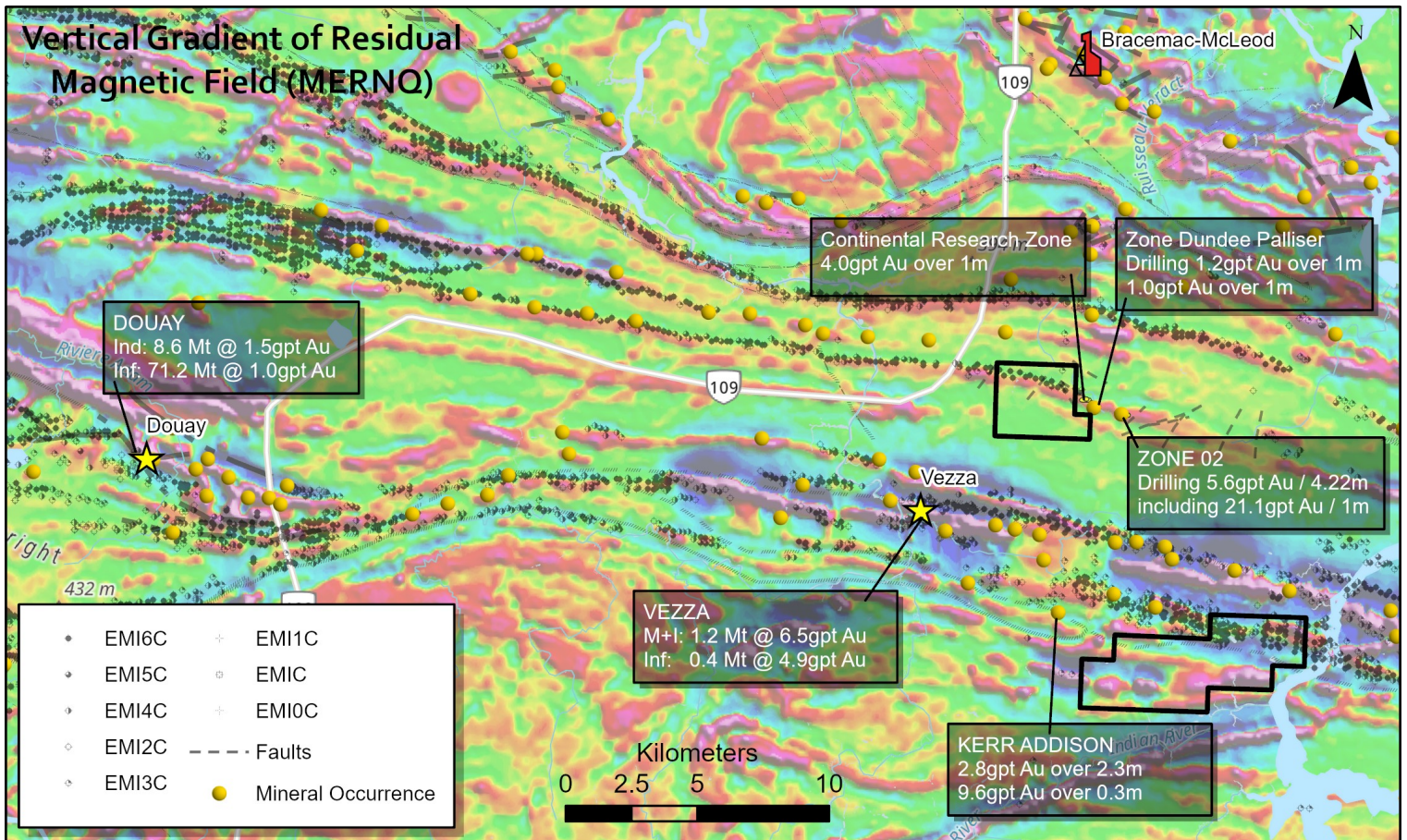
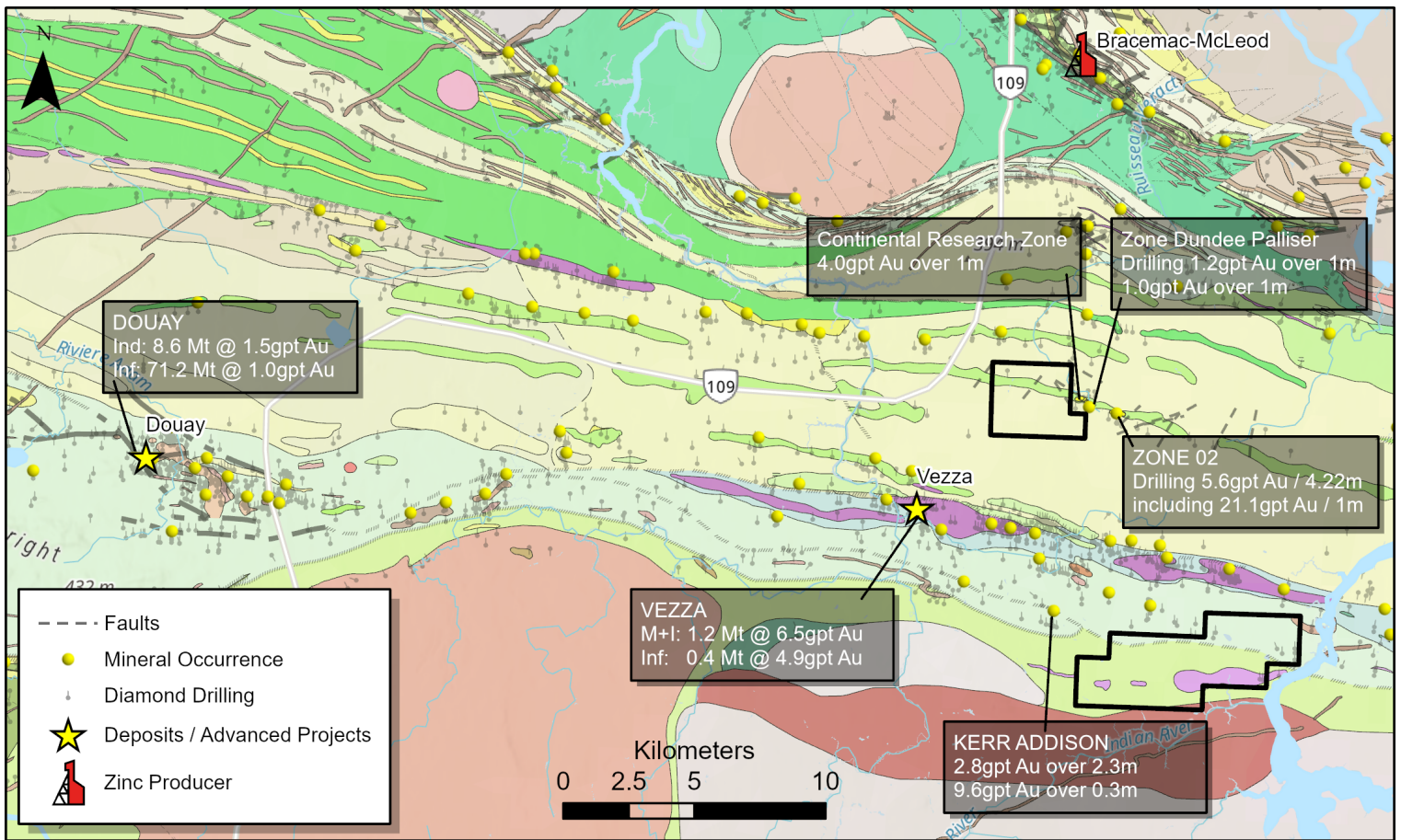
### Work:

- Targeted ground geophysical surveys
- Phase I drilling ~2,500m

1. Maple Gold Mines Ltd., Press Release October 20, 2020
2. Maudore Minerals Ltd. Press Release May 6, 2013
3. GM 49920
4. GM 54151
5. GM 44534







For more information please contact:

Marty Huber, 519 998-0971

Mark Fekete, 819 354-5244