



Peak Electric Inc.

320 North Byrne Rd. |
Toledo, OH 43607 |
P: 419.726.4848 |
F: 419.726.6206 |

Past Performances

Gilbane - Pre-Purchase	
- Washington Local Schools New Middle School	\$900,000
- BGSU Chiller Upgrade	
City of Bowling Green, Columbus, City of Tipp City	\$5.1M
- Transformers, Hapco Poles, Holophane, MV breakers	
- Fiberglass Conduit, Okonite Wire, G&W Switches	
Robinson Construction	\$700,000
- Arlington Schools - Siemens Switchgear	
- DFSM - Pre-Purchase XFMR	
ODOT District 1-2-3-4-5-6	\$250,000
- GE Lighting, Philips/Advance Lamps and Ballast	
- Cree Lighting, Misc Electrical Supplies, Hubbell Lighting	
Federal Supply Contracts	\$3.2M
- Siemens SF6 Breakers	
- Arizona Substation Equipment	
- Eaton MV Pad Mount Transformers	
- Siemens Voltage Regulators	
- Cooper Power Fuses	
- Highmast Poles and Airport Lighting	
- Vertiv UPS Systems	
- Eaton Nova Reclosures	
DODD - Zenith	\$2.2M
- 5 DODD Sites in Ohio G&W MV Switches	
- NVENT Sectionalizer Siemens Switchboard	
Andolyn Hospital - Ohio CAT	\$2.5M
- 2000kW Diesel Generator Paralleling Gear Transfer Switches	
Messer Construction	\$3.4M
- Grant Medical Hospital - Switchgear	
- Shelby Hospital - Switchgear	

Differentiators

- Bonding at \$3M Single / \$25M Aggregate
- Teaming
- 55 years of experience in the Distribution Industry
- Experience in the construction of buildings, mechanical systems and preventive maintenance
- Full line electrical distributor
- Current capabilities of \$25M in annual project management
- Multi-discipline Construction Expertise
- Composite Design Direct with end user, Partner with Installer, Design with A+E

Core Competencies

Customer Centric: Provide value added services with the flexibility for custom customer solutions.

Project Management: Facilitating, developing, coordinating, leading, and delivering quality projects on time and within budget.

Mission Focused: Safe, efficient, on schedule and cost controlled.

COMPANY OVERVIEW

Established in 2000 as an electrical contractor, Peak Electric Inc. has evolved into a full-line electrical distributor. We specialize in everything from everyday tools and facility maintenance supplies to critical high-voltage infrastructure, including substation transformers and MV gear.

Peak continues to grow by offering pre-purchase support, project management, and first-class customer service—ensuring every project is delivered with precision and reliability.

COMPANY DATA

DUNS: 10-196-0081
CAGE CODE: 7E3C6

NAICS CODES:
236210 – 236220 – 238210
333120 – 335110 – 335129
335311 – 335313 – 335314
335512 – 335931 – 335932
335999 – 423120 – 423610
423830 – 444190 – 811219

CERTIFICATIONS:
MBE DBE EDGE
OMSDC SBE

CONTACT

Rhys Petee
Vice-President
P: 419.726.4848
Rpetee@peakelectrictoledo.com



Peak Electric Inc.

320 North Byrne Rd. |
Toledo, OH 43607 |
P: 419.726.4848 |
F: 419.726.6206 |

Past Performances

ODOT - Construction Projects	\$400,000
- ODOT Bucyrus new facility, Cree Lighting - ODOT District 4 Holophane High Mast Poles Supply	
City of Bowling Green, Columbus, City of Tipp City	\$5.1M
- Transformers, Hapco Poles, Holophane, MV breakers - Fiberglass Conduit, Okonite Wire, G&W Switches	
Ohio Turnpike Commission	\$500,000
- Hapco Poles - AEL / Holophane Fixtures - Akron Foundry T-Bases Buchanan Inline Fuses Holders	
ODOT District 1-2-3-4-6	\$250,000
- GE Lighting, Philips/Advance Lamps and Ballast - Cree Lighting Misc Electrical Supplies Hubbell Lighting	
Federal Supply Contracts	\$3.2M
- Western Area Power DLA Maritime - Social Security Administration US Coast Guard - Bureau of Reclamation Office of Acquisition - ATF Ohio ANG	
Dupont	\$250,000
- Prepurchase Substation - Steel Structure G&W Misc HV items	
Andolyn Hospital - Ohio CAT	\$2.5M
- 2000kW Diesel Generator Paralleling Gear Transfer Switches	
First Energy 3-Year Contract	\$4.4M
- Ermco Transformer Supply, Bierer Tools, Lighting Supplies	

Differentiators

- Bonding at \$3M Single / \$25M Aggregate
- Teaming
- 55 years of experience in the Distribution Industry
- Experience in the construction of buildings, mechanical systems and preventive maintenance
- Full line electrical distributor
- Current capabilities of \$25M in annual project management
- Multi-discipline Construction Expertise
- Composite Design Direct with end user, Partner with Installer, Design with A+E

Core Competencies

Customer Centric: Provide value added services with the flexibility for custom customer solutions.

Project Management: Facilitating, developing, coordinating, leading, and delivering quality projects on time and within budget.

Mission Focused: Safe, efficient, on schedule and cost controlled.

COMPANY OVERVIEW

Established in 2000 as an electrical contractor, Peak Electric Inc. has evolved into a full-line electrical distributor. We specialize in everything from everyday tools and facility maintenance supplies to critical high-voltage infrastructure, including substation transformers and MV gear.

Peak continues to grow by offering pre-purchase support, project management, and first-class customer service—ensuring every project is delivered with precision and reliability.

COMPANY DATA

DUNS: 10-196-0081
CAGE CODE: 7E3C6

NAICS CODES:
236210 – 236220 – 238210
333120 – 335110 – 335129
335311 – 335313 – 335314
335512 – 335931 – 335932
335999 – 423120 – 423610
423830 – 444190 – 811219

CERTIFICATIONS:
MBE DBE EDGE
OMSDC SBE

CONTACT

Rhys Petee
Vice-President
P: 419.726.4848
Rpetee@peakelectrictoledo.com



Peak Electric Inc.

320 North Byrne Rd. |
Toledo, OH 43607 |
P: 419.726.4848 |
F: 419.726.6206 |

Past Performances

Camp Perry Renovations	\$2,541,000.00
Wright Patterson AFB - Hanger Windows	\$3,700,000.00
U.S. Coast Guard Maintenance Contract	\$355,000.00
Youngstown Air Reserve Station	\$185,000.00
U.S. Coast Guard – Duluth, MN Dredging	\$291,000.00
Wright Patterson AFB – Area A Sewer Repair	\$1,250,168.00
U.S. Coast Guard – Moon Island Repair	\$221,450.00
U.S. Coast Guard – Potable Waterlines	\$311,285.00
U.S. Coast Guard – Marblehead Demolish Asset	\$26,780.00
U.S. Coast Guard – Major M&R SFO OPCEN	\$3,193,619.00
U.S. Coast Guard – Replace Hangar Condensing	\$145,200.00
U.S. Coast Guard – Replace Floating Dock	\$191,200.00
180th Air Force – Ramp Lighting	\$423,845.00

Differentiators

- Bonding at \$5M Single / \$10M Aggregate
- Joint Venture Teaming
- 55 years of experience in the Electrical Industry
- 20 years of experience in Mechanical Systems
- Experience in the construction of buildings, mechanical systems, and preventive maintenance
- Full line electrical distributor
- Current capabilities of \$8M in annual project management
- Multidiscipline Construction Expertise
- Composite Design Direct with end user, Partner with Installer, Design with A+E
- OMSDC-Chair Toledo Region
- TASBA and Toledo Chamber

Core Competencies

Customer Centric: Provide value-added services with the flexibility for custom customer solutions.

Project Management: Facilitating, developing, coordinating, leading, and delivering quality projects on time and within budget.

Mission Focused: Safe, efficient, on schedule and cost-controlled.

Team Driven: Develop, build, and maintain a team that has the knowledge, resources, and drive to safely satisfy the customer requirements and project needs.

Pre-Purchase Specialist

COMPANY OVERVIEW

Established in 2000 as an electrical contractor, Peak Electric Inc. has evolved into a full-line electrical distributor. We specialize in everything from everyday tools and facility maintenance supplies to critical high-voltage infrastructure, including substation transformers and MV gear.

Peak continues to grow by offering pre-purchase support, project management, and first-class customer service—ensuring every project is delivered with precision and reliability.

COMPANY DATA

DUNS: 10-196-0081
CAGE CODE: 7E3C6

NAICS CODES:
236210 – 236220 – 238210
333120 – 335110 – 335129
335311 – 335313 – 335314
335512 – 335931 – 335932
335999 – 423120 – 423610
423830 – 444190 – 811219

CERTIFICATIONS:
MBE DBE EDGE
OMSDC SBE

CONTACT

Milton T. McIntyre
President
P: 419.726.4848
MMcIntyre@peakelectrictoledo.com



320 N. Byrne Rd
Toledo, OH 43607
419-726-4848

Line Card

BATTERIES
RAY-O-VAC

CABLE ACCESSORIES
3M
EMC
HERITAGE
NSI/TORK
ILSCO

CABLE TRAY
CABLOFIL
CABLE MANAGER
CHALFANT
TJ COPE
MP HUSKY
WBT TRAY

CABLE/WIRE
ALAN WIRE
SOUTHWIRE
CME
DRAKA
HOUSTON WIRE & CABLE
OKONITE
OMNI
PRIORITY CABLE
PRYSMIAN/GENERAL CABLE
SERVICE WIRE
TF KABLE

CONDUIT
CAL PIPE
GIBSON
HERITAGE
WHEATLAND
WESTERN TUBE
ROB ROY
PLASTI-BOND
QUEEN CITY
WIREMOLD

CONDUIT FITTINGS
ARLINTON
BRIDGEPORT
CROUSE HINDS
KILLARK
OZ GEDNEY
ORBIT
TOPAZ
APPLETON

DATA & COMMUNICATIONS
BELDEN
HITACHI
LIFE LINE
RAMTEL
RIB
TAPPAN
WEST PENN
WIREMOLD

DISTRIBUTION & EQUIPMENT ELECTRIC HEAT
ABB
EATON/COOPER
FEDERAL PACIFIC
G&W
GE POWER SOLUTIONS
IEM
SIEMENS
CONTROLLIX

ELECTRIC HEAT
BERKO
DANFOSS
EGS EASY HEAT
SELPRO
TPI

ENCLOSURE/WIREWAY
APPLETON
B-LINE
COXLIN
EXM
HAMMON
KINNEY MFG
MILBANK
WIEGMANN

FIRE BARRIER
3M
STI

FUSES
COOPER
MERSEN
S&C

GROUNDING
HARGER
I-GARD
ILSCO
NSI
PENN UNION

HAND DRYER
WORLD DRYER
DYSON

INDUSTRIAL FANS
ENVIROFAN
WESTINGHOUSE

HARDWARE
EMC
EPCO
HALEX
MORSE
NSI
SELECTA

LAMP & BALLAST/DRIVERS
HALCO
LEDVANCE
OSRAM SYLVANIA
EYE LIGHTING
RAB
SATCO
VENTURE LIGHTING
WESTINGHOUSE

LIGHTING CONTROL
CRESTRON
HUBBELL BUILDING AUTOMATION
INTERMATIC
LEVITON
STEINEL
TORK
WATTSTOPPER

(INGROUND)/ FLOOR BOXES
FSR
LEW
OLD CASTLE
RACEWAY SOLUTIONS
SYNERTECH

SURGE PROTECTIONS
ASCO
GE
JOSLYN SURGE
SIEMENS

SMOKE DETECTORS
KIDDE FIREX

STRUT
FLEX STRUT

TEST & MEASUREMENT
AMEC
TORK

TOOLS
CURRENT TOOLS
DEWALT
MORSE
I TOOLS*LENOX
MC CUTTER
MORRIS
ORION ROPE
STOUT
KLIEN TOOLS

TRANSFORMERS
ABB
ACME
COOPER
FEDERAL PACIFIC
HAMMOUND
JEFFERSON
MGM
PQI TRANSFORMERS
ERMCO
SUNBELT
VIRGINIA

WIRE DEVICES
EATON/ARROW HART
LEVITON

WIRE CONNECTORS
3M
NSI

POLES
BROWNWOOD
CMT
KING LUMINAIRE
NAFCO
RAB
VALMONT
HAPCO



Certified MBE
Minority Business Enterprise

www.peakelectrictoledo.com



Lighting Line Card

A. LIGHT
 AB CHANCE
 ACCLAIM LIGHTING
 AIREY-THOMPSON LIGHTING
 ALERA LIGHTING
 ALUMEN 8A
 AZZ RIGALITE
 AMERICAN BRIGHT
 AMERICAN GREEN TECHNOLOGY
 AMERLUX EXTERIOR
 AMERLUX LIGHTING SOLUTIONS
 APPLETON
 ARC LIGHTING SYSTEMS/FAEBER
 ARCHITECTURAL AREA LIGHTING
 ARTFORMS
 ATOMIS LIGHTING
 AXO LIGHT
 BARBICAN
 BEACON
 BEGHELLI
 BEGHELLI LUCE`
 BELFER GROUP
 BEST LIGHTS
 BETA LED
 BETA LIGHTING
 BIRCHWOOD
 BOCK LIGHTING
 CALIFORNIA ACCENT LIGHTING (CALI)
 CAMMAN INDUSTRIES
 CARMANAH SOLAR
 CASTALDI
 CERTOLUX
 CHARLOTTE INTERNATIONAL PARTNERS
 CLASSIC LAMP POSTS
 CMT
 COLUMBIA LIGHTING
 CONTRAST LIGHTING
 CREE LIGHTING
 CRENSHAW
 CSL
 DARK
 DIALIGHT LIGHTING
 DAY-O-LITE
 DAYBRITE
 DESIGN PLAN
 DEVINE LIGHTING
 DIMONOFF
 DUAL-LITE
 EDGE LIGHTING
 EDWARDS SIGNALING
 EGOLUCE/EGO LED
 ELATION ARCHITECTURAL
 ELIO
 ELITE
 ELLIPTIPAR
 EMBER LED
 EMERGE LED
 EMERGITLITE

ENERGY FOCUS
 ENGINEERED REFLECTOR PRODUCTS
 ENVOY
 EVENLITE
 EYE LIGHTING
 FIBERSTARS
 FIRE RATED SPECIALITIES
 FIREFLY LED
 FOCUS
 FORUM LIGHTING
 FRAQTIR
 GAMMALUX
 GARDCO
 GE LIGHTING
 GIGA TERA
 GLOBAL LIGHTING
 GREENLEE LIGHTING
 GBA LIGHTING
 HALCO LIGHTING
 H.E. WILLIAMS
 HOLOPHANE
 HUBBELL LIGHTING
 I-LED
 ILLFARI
 IMPACT ARCH LIGHTING
 INSIGHT
 INTENSE LIGHTING
 INTER-LUX
 INTRIGUE
 IOTA
 J & J ELECTRONICS
 JESCO LIGHTING
 JUNO
 KILLARK
 KIM LIGHTING
 KING LUMINAIRE
 KRAMER LIGHTING
 KW INDUSTRIES
 LEDCONN
 LEHIGH DIMMING
 LEHIGH ELECTRIC
 LEVITON
 LIGHT EDGE
 LIGHTWILD
 LINEAR LIGHTING
 LSI INDUSTRIES
 LUMINAIRE LED
 LUSIO LED
 LVS
 MAINSTREET LIGHTING
 MARTINI
 METALUMEN
 MHT
 MICHAELS LIGHTING
 MILLERBERND LIGHTING
 NAFCO INTERNATIONAL

NATIONAL CATHODE
 NAVALITE
 NERI
 NEW STAR LIGHTING
 NICOR
 NILAND CO.
 NIPPO
 ORGANIC LIGHTING
 ORGATECH+OMEGALUX
 OSRAM/SYLVANIA
 P&K POLES
 PATHWAY
 PEACHTREE LIGHTING
 PERFECT POWER
 PERFORMANCE IN LIGHTING
 PHILIPS
 PHOENIX PRODUCTS
 PUNNACLE ARCHITECTURAL LIGHTING
 PLANLIGHT
 PLUG-N-GO
 PROGRESS
 PRESCOLITE LIGHTING
 PRISMA (PERFORMANCE IN LIGHTING)
 PURE LIGHTING
 RAB
 RAMBUSCH
 REBELLE
 RED SKY
 RYTHUR PURDY
 SCOTT ARCHITECTURAL LIGHTING
 SECURITY LIGHTING SYSTEMS
 SENTRY ELECTRIC
 SOLERA
 SPAULDING LIGHTING
 SPORTSLITER SOLUTIONS
 STERNER LIGHTING SYSTEMS
 SPAULDING LIGHTING
 SPORTSLITER SOLUTIONS
 STERNER LIGHTING SYSTEMS
 TBR ARCHITECTURAL LIGHTING
 TCPI
 THE LIGHT EDGE
 TRE CI LUCE
 V2 LIGHTING
 V2 LIGHTING GROUP VISIONEERING
 VALMONT
 WAVE LIGHTING
 W.F. HARRIS
 WEVERDURCE
 WESTINGHOUSE

LIGHTING CONTROLS
 CRESTON
 EATON
 HUBBELL BUILDING AUTOMATION
 LEVITON
 STIENEL
 WATTSTOPPER
 SENSOR WORX



www.peakelectrictoledo.com



Our Collaborative Approach

Project Base Distributor

- Team Capabilities
 - We we exercise the ability to work with multiple vendors/service companies
 - We collaborate seamlessly at the project management level and ensure full integration of our services on the jobsite.

- Experience w/ large projects & Engineering Firms

SSOE	Ascend Battery Plant
JDRM	St Johns HS
NEXAS	Dupont Substation
MESSER	Grant Medical Hospital - Shelby Hospital
GILBANE	BGSU Chiller Upgrade - WLS Middle School
JeDunn	Bowling Green - Data Center
Wapa	Phoenix AZ Substation - Roseville CA Substation - Canyon Ferry MT SF6 Breakers

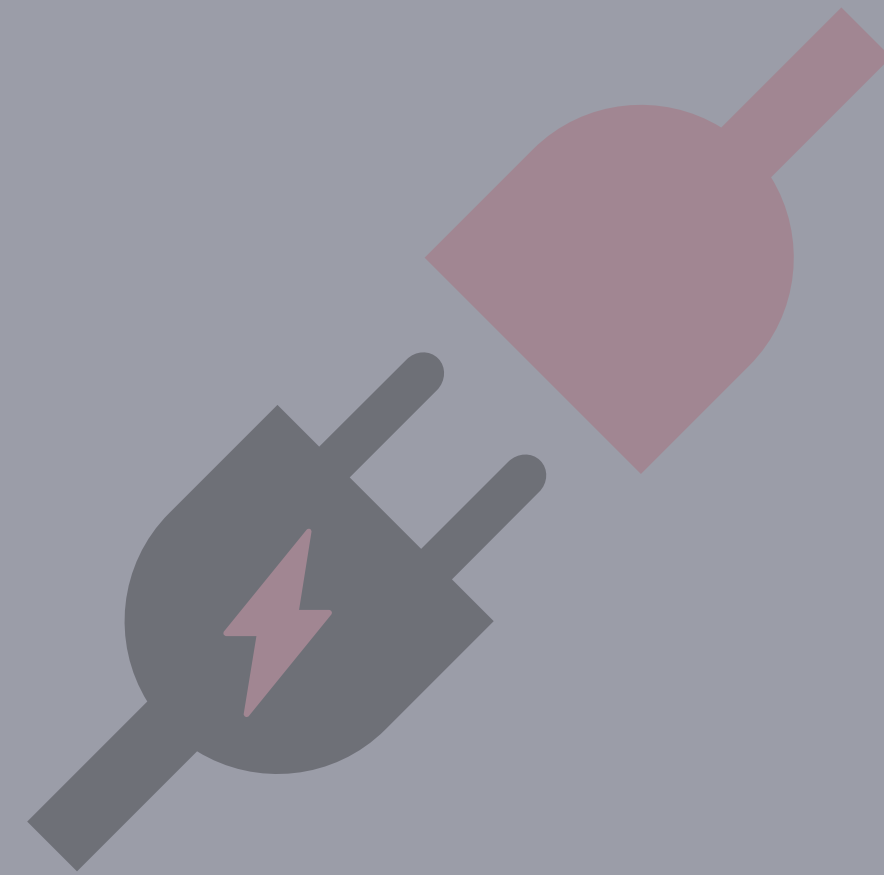


JeDunn - Bowling Green - Data Center
Temporary Power Provided



Who We Are

Peak Electric Inc. is a wholesale electrical supply company and full-line distributor with over 60 years of experience. Based in Toledo, Ohio, we serve Southeast Michigan and Northwest Ohio with local inventory and same-day delivery. Representing 300+ manufacturers, we specialize in LED lighting and offer a comprehensive range of products. Customer-centric and project-focused, we are committed to delivering the highest quality solutions through continuous improvements in technology, cost efficiency, and logistics.



Completed Projects

- Toledo Public Schools - Lighting - Primary Service
- WAPA – Substations, VR's Pad mount Xfmrs
- University of Cincinnati
- Honda East Liberty Plant
- Air Gas
- Campbell Soup
- Louis Dreyfus Soybean Plant
- Andersons
- Sunoco Pipeline
- Mobis (Jeep Supplier)
- City of Findlay - BG - Sylvania
- BGSU
- University of Toledo



Power Distributions

- Switchgear
- Circuit Breakers
- Safety Switches
- Transformers
- Cable Bus
- Busway
- Relays
- Panelboards
- Load Centers
- Capacitor Banks
- Control Cabinets
- MCC and Retro-fit gear



SIEMENS



LIGHTING

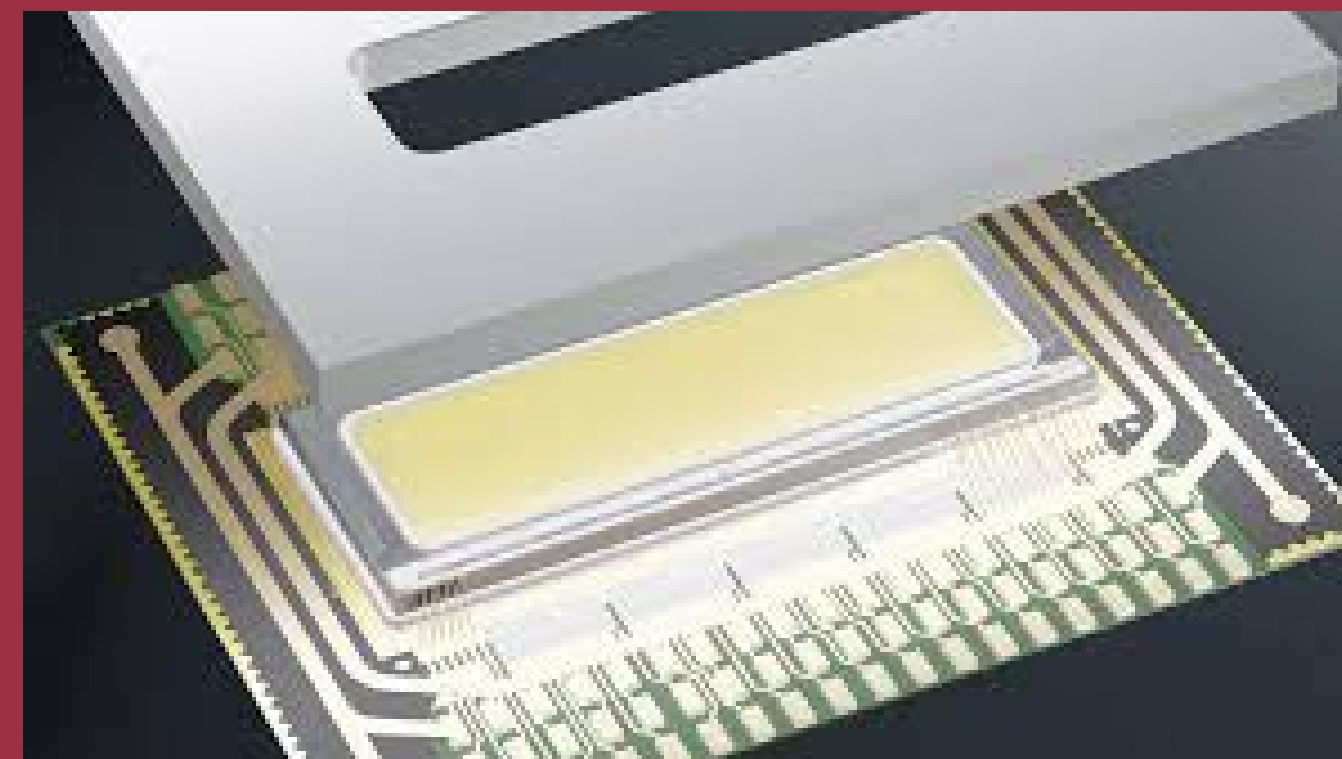
- Controls
 - Building automation, sensors, lighting control panels
- LED - Latest in energy and maintenance savings
- Exterior - Specialist in Good/Better/Best Applications
- Interior - Products for all Commercial and Industrial needs
- Emergency – Inverters, exits, regress safety
- Layout and Design Services





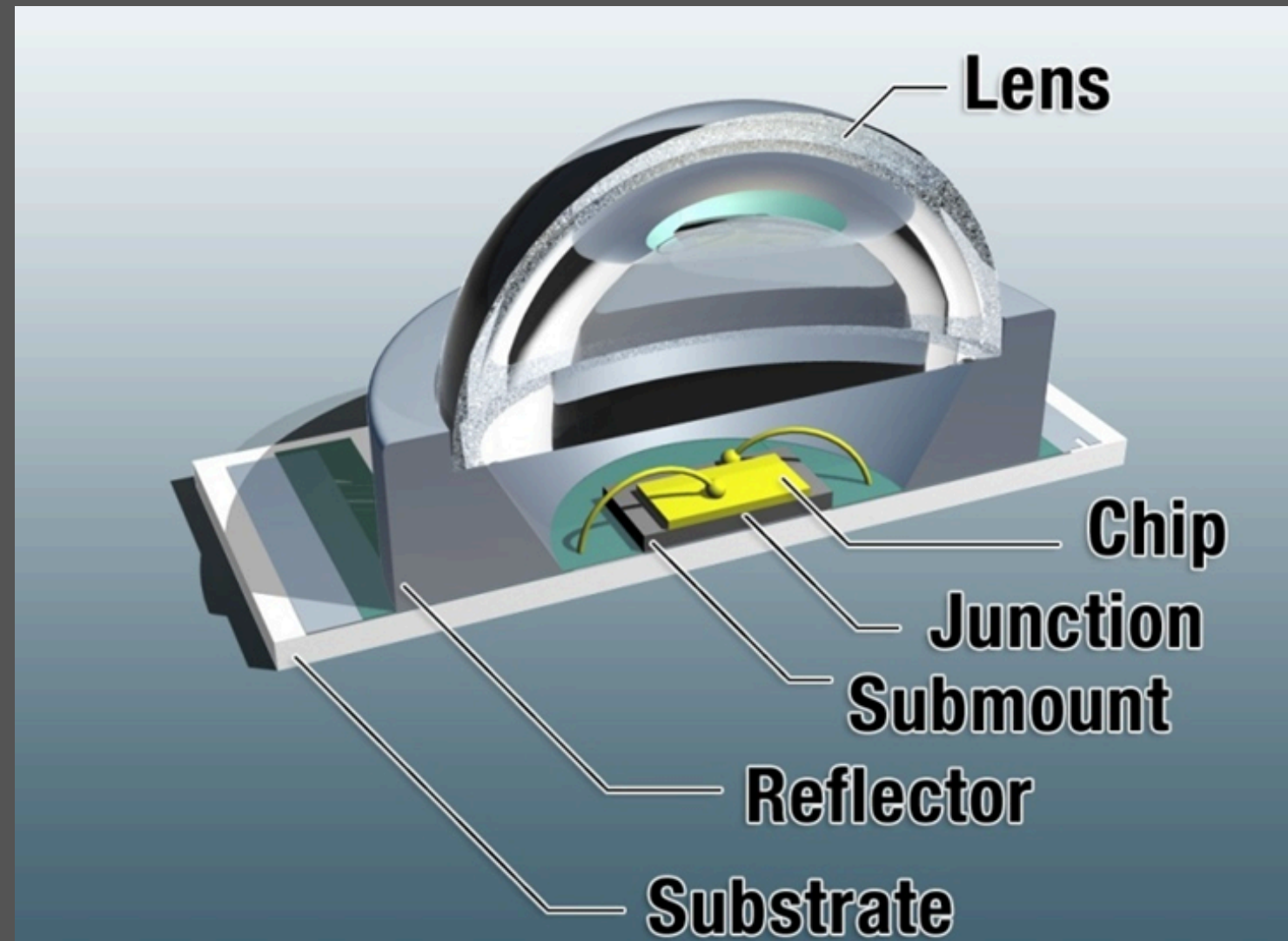
YOUR LIGHTING/LED EXPERIENCES

- What is your current knowledge of LED lighting?
- Have you encountered any technical concerns or challenges?
- What are your primary application needs?
 - Required light levels
 - Customer-specific requirements
 - Security considerations
 - Exterior areas and warehouse spaces
 - Process and manufacturing areas
 - Office, meeting rooms, and classified spaces





LED BENEFITS/CONCERNS



- No maintenance for 12-30+ years
- Energy Saving of 50-80 %
- Instant ON/OFF w/o Cycling issues
- Dimmable, photocell or motion control improves life



- Heat management affects LED life
- Color shifting
- Control of light in usable IES patterns
- Reputable / Proven manufactures
- What is Light Emitting Diode (LED)?



LED EXTERIOR DESIGNS

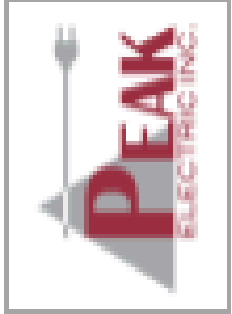
PEAK ELECTRIC INC.



LED

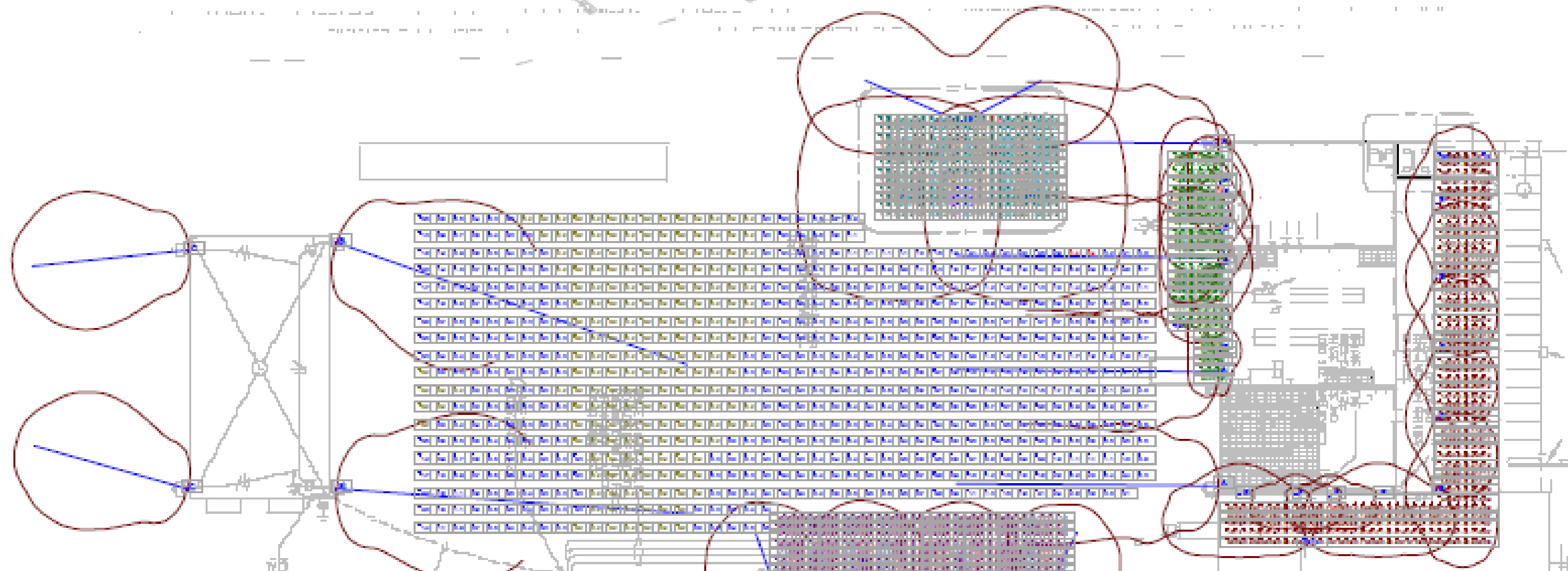
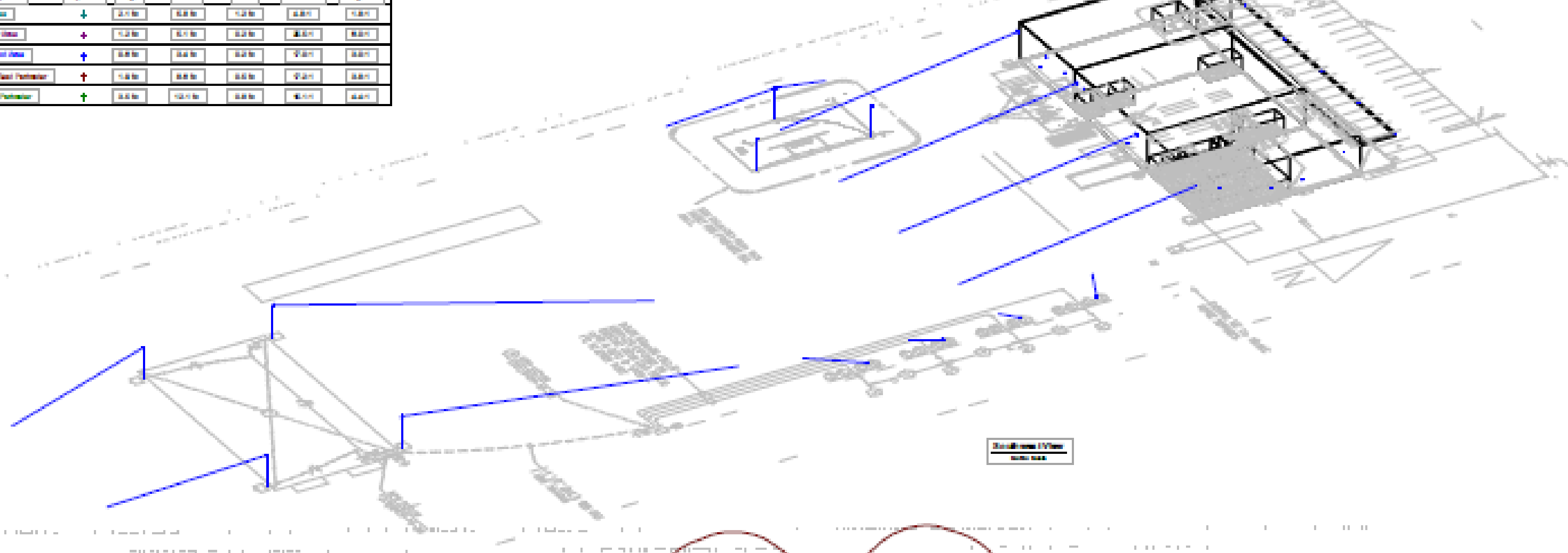
vs

HID



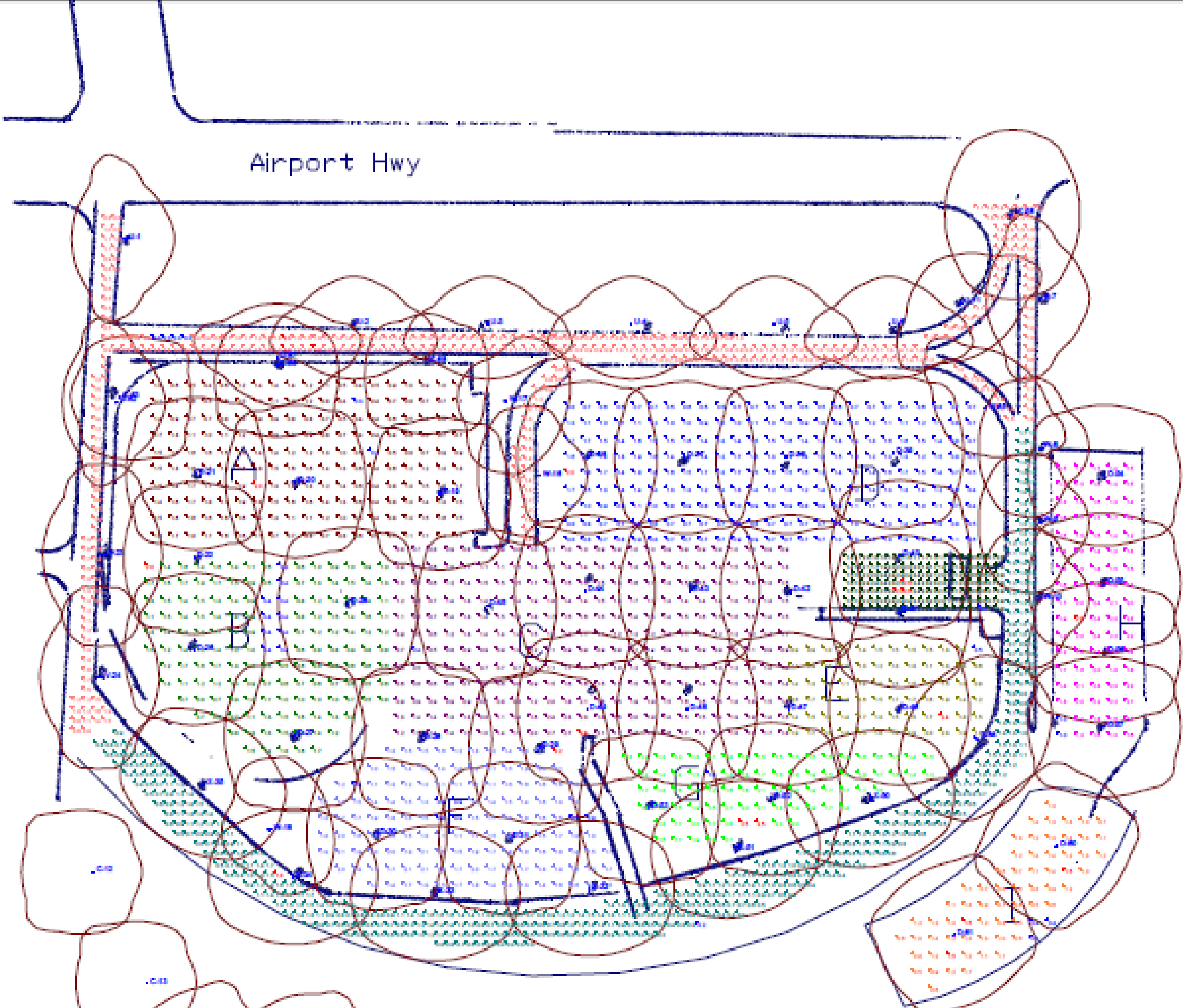
□	A	A	CHECK W/ME & CONFIRMED THAT ALL WORK IS COMPLETE.	0.00	0.00
□	B	A	CHECK W/ME & CONFIRMED THAT ALL WORK IS COMPLETE.	0.00	0.00
□	C	A	CHECK W/ME & CONFIRMED THAT ALL WORK IS COMPLETE.	0.00	0.00
□	D	A	CHECK W/ME & CONFIRMED THAT ALL WORK IS COMPLETE.	0.00	0.00
□	E	A	CHECK W/ME & CONFIRMED THAT ALL WORK IS COMPLETE.	0.00	0.00
□	F	A	CHECK W/ME & CONFIRMED THAT ALL WORK IS COMPLETE.	0.00	0.00
□	G	A	CHECK W/ME & CONFIRMED THAT ALL WORK IS COMPLETE.	0.00	0.00
□	H	A	CHECK W/ME & CONFIRMED THAT ALL WORK IS COMPLETE.	0.00	0.00
□	I	A	CHECK W/ME & CONFIRMED THAT ALL WORK IS COMPLETE.	0.00	0.00
□	J	A	CHECK W/ME & CONFIRMED THAT ALL WORK IS COMPLETE.	0.00	0.00

Finish Area	+	0.10	0.00	0.00	0.00	0.00
Transfer Area	+	0.20	0.10	0.00	0.00	0.00
Main Floor Area	+	0.00	0.00	0.00	0.00	0.00
Roof Deck Area	+	0.00	0.00	0.00	0.00	0.00
Roof Structure	+	0.00	0.00	0.00	0.00	0.00
Roof Deck	+	0.00	0.00	0.00	0.00	0.00



AirGas
Exterior
LED Lighting

Designer
A. Specht, LC
Date
Oct 20 2015
Scale



STATISTICS						
Description	Symbol	Qty	Min	Max	Avg	Height
LEDway LEDway	+	1,176	0.00'	0.00'	0.71'	0.71'
LED	+	1,000	0.00'	0.00'	0.21'	0.21'
LED A	+	1,176	0.00'	0.00'	0.71'	0.71'
LED B	+	1,176	0.00'	0.00'	0.50'	0.50'
LED C	+	1,000	0.00'	0.00'	0.20'	0.20'
LED D	+	1,176	0.00'	0.00'	0.50'	0.50'
LED E	+	1,000	0.00'	0.00'	0.50'	0.50'
LED F	+	1,000	0.00'	0.00'	0.41'	0.41'
LED G	+	1,176	0.00'	0.00'	0.50'	0.50'
LED H	+	1,176	0.00'	0.00'	0.50'	0.50'
LED I	+	1,000	0.00'	0.00'	0.50'	0.50'
Tomball LED Fixtures	+	0.00	0.00'	0.00'	0.00'	0.00'

LUMINAIRE SCHEDULE					
Symbol	Label	Qty	Catalog Number	Lumens	LF
+	C	7	ATELUMINA LEDWAY LEDWAY LEDWAY	1000	0.41
+	D	14	ATELUMINA LEDWAY LEDWAY LEDWAY	1000	0.41
+	E	11	ATELUMINA LEDWAY LEDWAY LEDWAY	1000	0.41
+	V	2	ATELUMINA LEDWAY LEDWAY LEDWAY	1000	0.41
+	W	4	ATELUMINA LEDWAY LEDWAY LEDWAY	1000	0.41
+	X	8	ATELUMINA LEDWAY LEDWAY LEDWAY	1000	0.41

LED INTERIOR DESIGNS



AIR GAS



AIR GAS

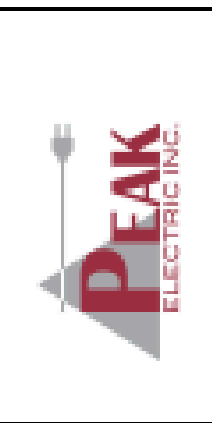


LUMINAIRE SCHEDULE						
Symbol	Label	Qty	Category Number	LUF	Notes	
	A	148	200x40x100mm LED	0.80	01	
	B	22	150x40x100mm LED	0.80	02	
	C	2	150x40x100mm LED	0.80	03	
	E	4	150x40x100mm LED	0.80	04	
	D	13	200x40x100mm LED	0.80	05	
	F	17	TRC	1.00	1	
	G	4	TRC	1.00	08	
	H	4	CHAND	0.80	12	

STATISTICS						
Description	Symbol	Qty	Min	Max	Max/Min	Length
2nd Floor Office 02	↓	47%	01%	99%	1.00	1.20
ENTRANCE	↓	47%	01%	99%	1.20	1.40
Lounge Area	↓	50%	48%	52%	1.40	1.60
Men's Locker Rm	↓	50%	50%	50%	2.00	2.20
Men's Rest Rm	↓	50%	47%	53%	1.40	1.60
Men's Shower	↓	50%	47%	53%	2.00	1.80
Multiurpose Rm	↓	48%	48%	48%	1.80	1.20
OPD Day Office	↓	51%	50%	52%	1.20	1.20



add daylight controls to these 3 areas



Iron Works
Admin Bld
LED Lighting

Designer
AI Specht
Date
Nov 21 2017
Scale
As Shown 24x36
Drawing No.

City of Findlay WWTP



Roadway Designs

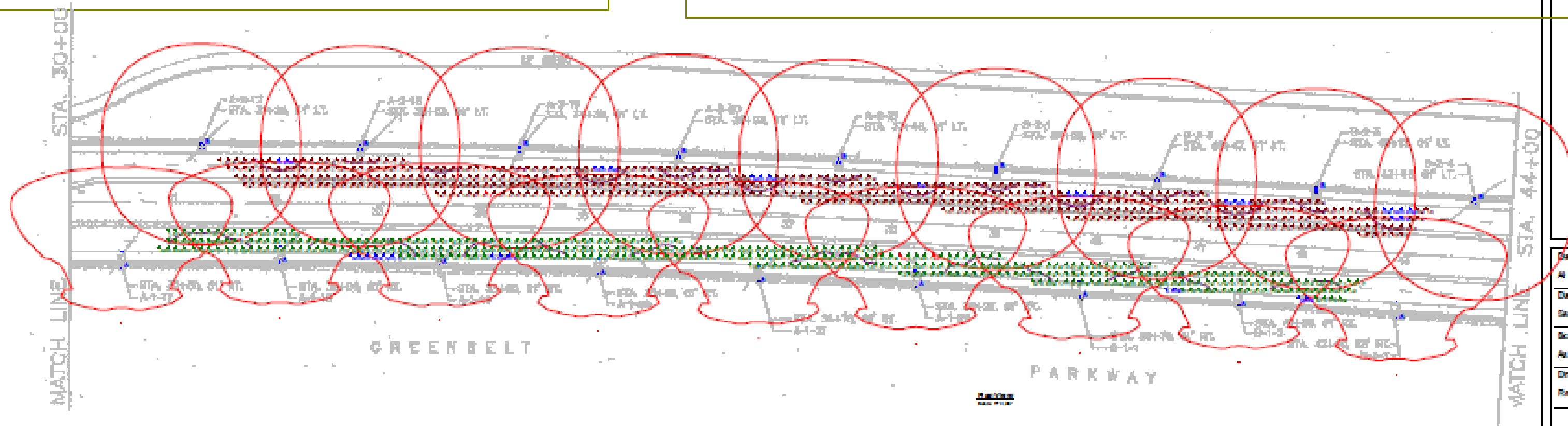
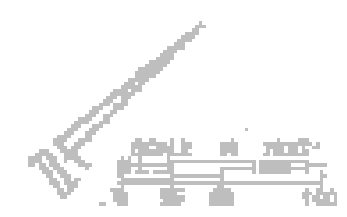
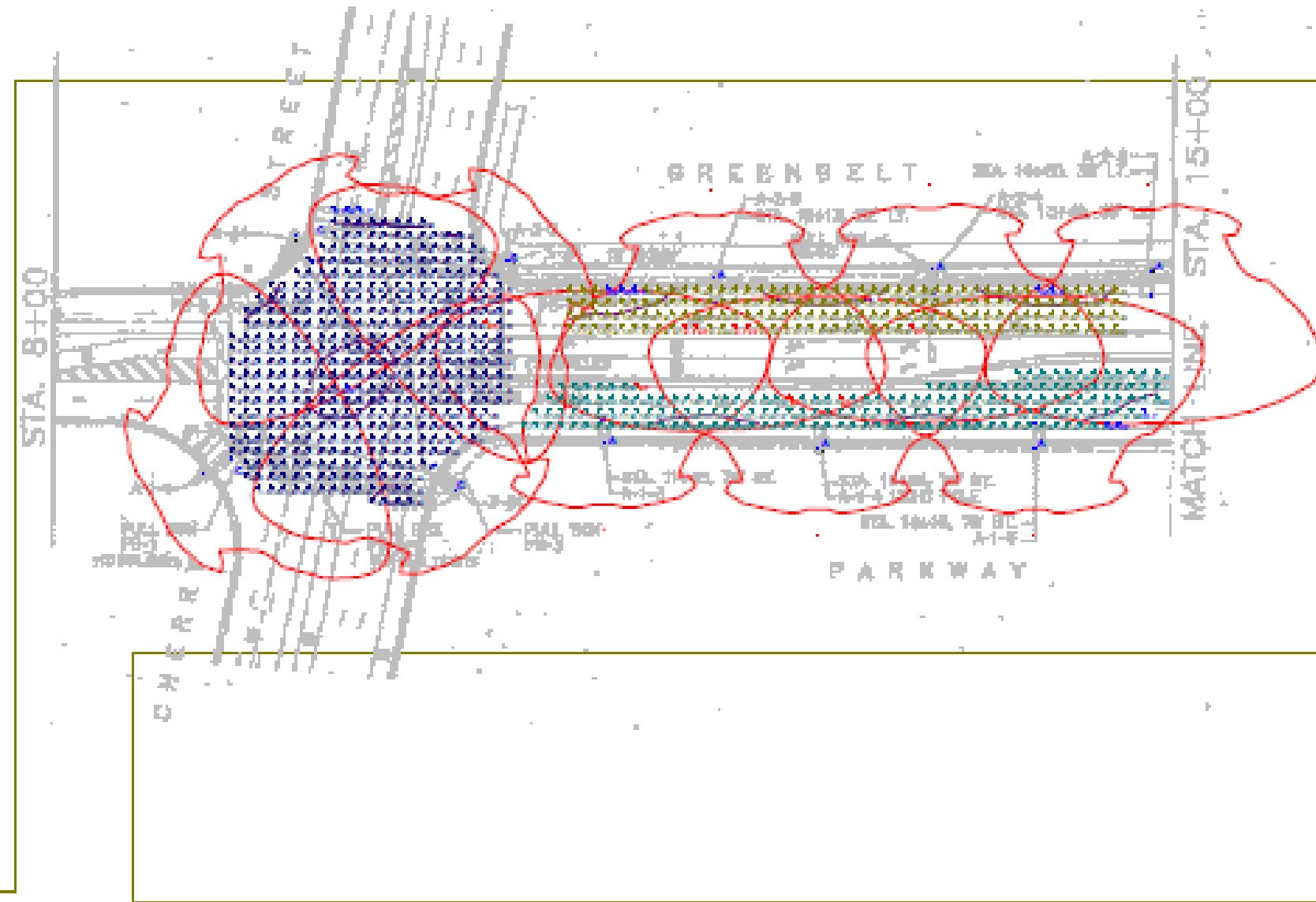


STATISTICS			
Category	Symbol	Qty	Height
Intermediate Green Belt	+	1,876	2.8m
Green	+	1,476	2.8m
Green	+	1,176	1.8m
Green	+	1,476	2.8m
Green	+	1,776	2.8m

LUMINAIRE SCHEDULE			
Symbol	Label	Quantity	Note
+	Green Belt - Top	1,876	
+	Green Belt - Middle	1,476	
+	Green Belt - Bottom	1,176	
+	Green Belt - Top	1,476	
+	Green Belt - Middle	1,776	

POWER DENSITY STATISTICS		
Value	# Luminaires	Total Power
Power Density (W/m²)	60	1000.0 W

ODOT Specification (old)
City of Toledo Requirements
-Public concerns



Greenbelt Parkway
LED Site Lighting Plan
Cree

Designer	AI Spectra
Date	Sept 5, 2014
Scale	As shown
Drawing No.	Rev 0117-5

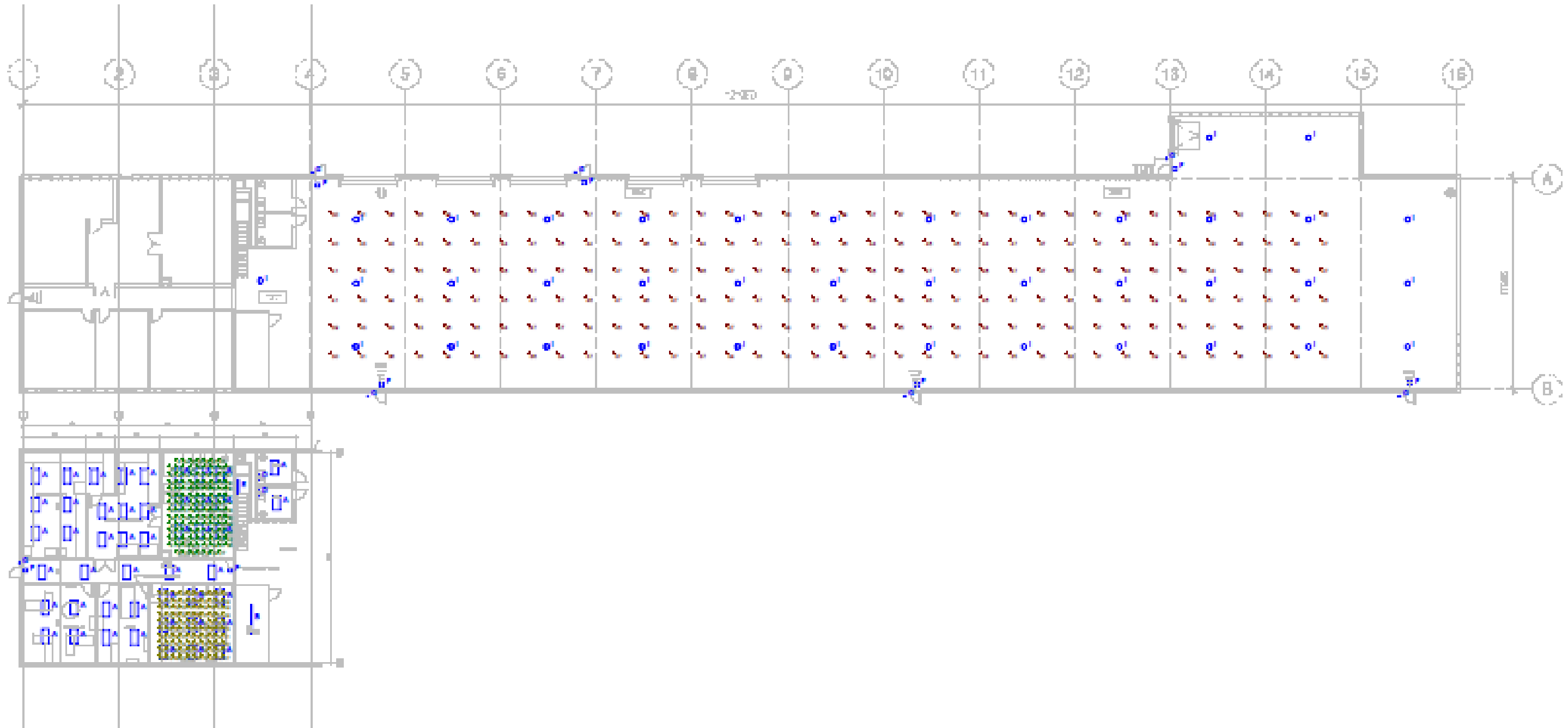
Industrial Designs





LUMINAIRE SCHEDULE					
Symbol	Label	Qty	Catalog Number	ULP	Note
□	A	48	2200444-001	0.26	10
	B	1	1000000000000	0.26	17
	C	1	1000000000000	0.26	17.1
	D	2	2200444-001	0.26	17
□	F	8	800	1.00	1
□	G	7	700	1.00	18
○	I	14	2200444-001	0.26	18.1

STATISTICS						
Description	Symbol	Qty	Min	Max	Weight	Height
Recessed Lum.	↑	428	81h	47h	1.40	1.20
Lum.	↑	81h	88h	26h	1.60	1.00
Hardware	↑	47h	82h	26h	1.20	1.40



Plan View
11/21/17



Iron Works
Warehouse
LED Lighting

Designer:
Al Specht
Date:
Nov 21 2017
Scale:
As Shown
Drawing No.:

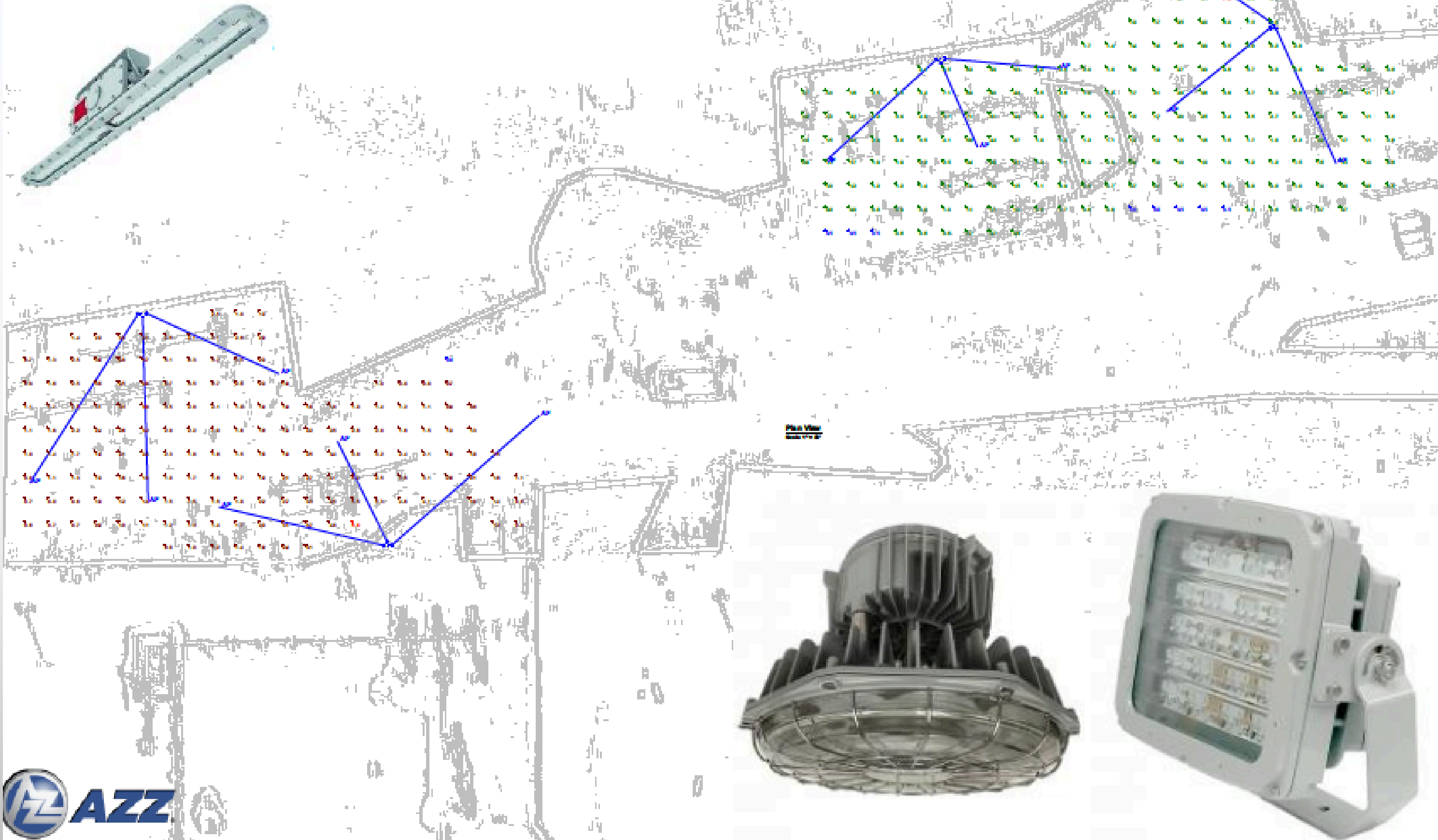


ETP Eastern Pipeline

LUMINAIRE SCHEDULE						
Symbol	Label	Qty	Order Number	Quantity	Lot #	Watts
	LP	4	PL1000000	PL1000000	LED	600 300

STATISTICS						
Classified Item	Symbol	Avg	Min	Max	MaxMin	AvgMin
Each Item	+	2.2%	7.0%	0.0%	10.2%	4.4%
Each Item	+	2.2%	0.0%	0.0%	11.0%	4.4%

NOTES
1. 30' mounting height





Panhandle Eastern Pipeline
LEP Upgrade

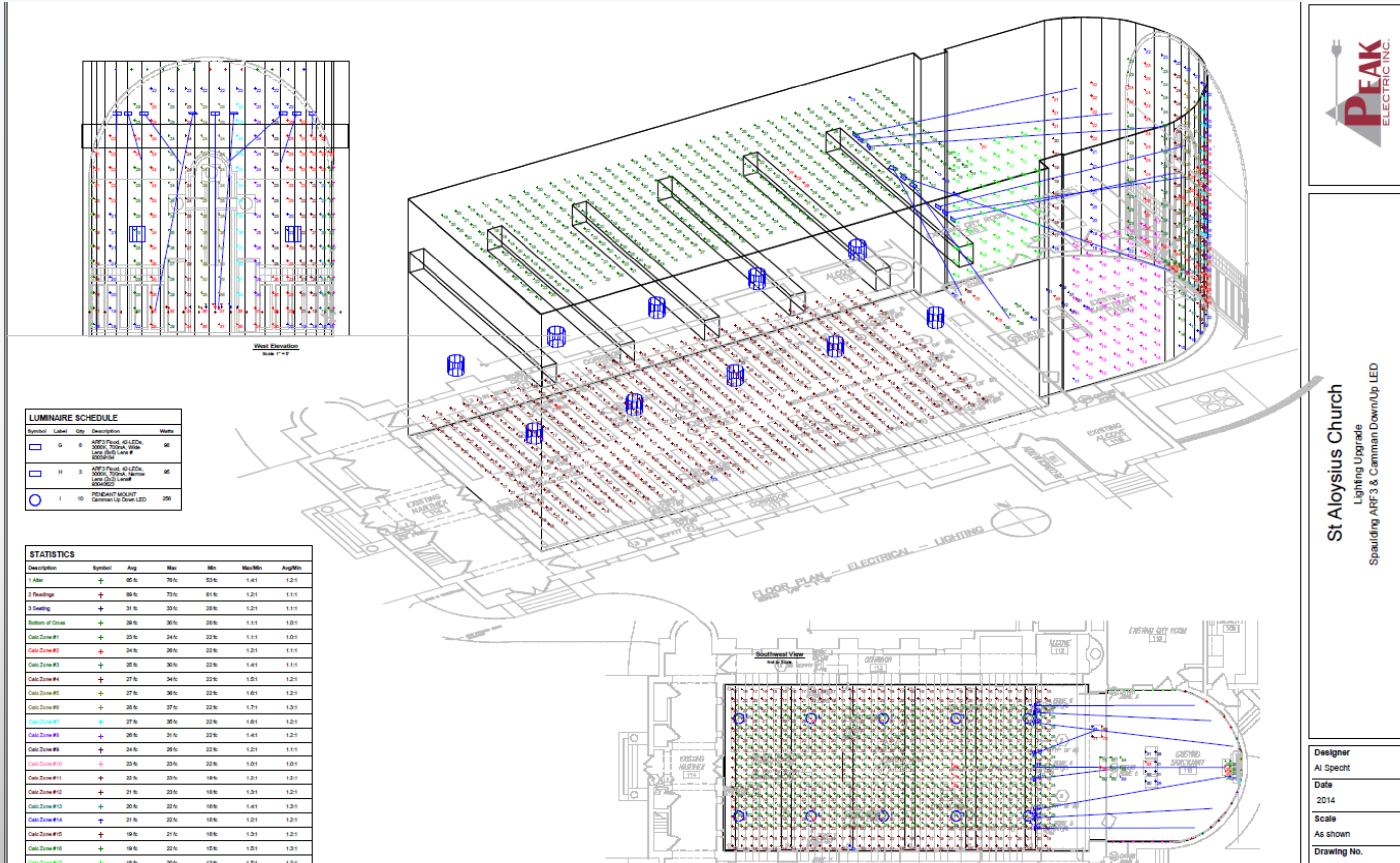
Designer
A Specht
Date
Aug 2016
Scale
As shown 24x36
Drawing No.

1 of 1

Specialty Designs



Specialty Designs





Camman uplighting 8000 lumens Cree Chips



BGCMA CHURCH
LE Electric / PEAK Electric
LED Lighting

Designer
AI Specht, LC
Date
Dec 2 2015
Scale
As Shown 24x36
Drawing No.
Rev 010816

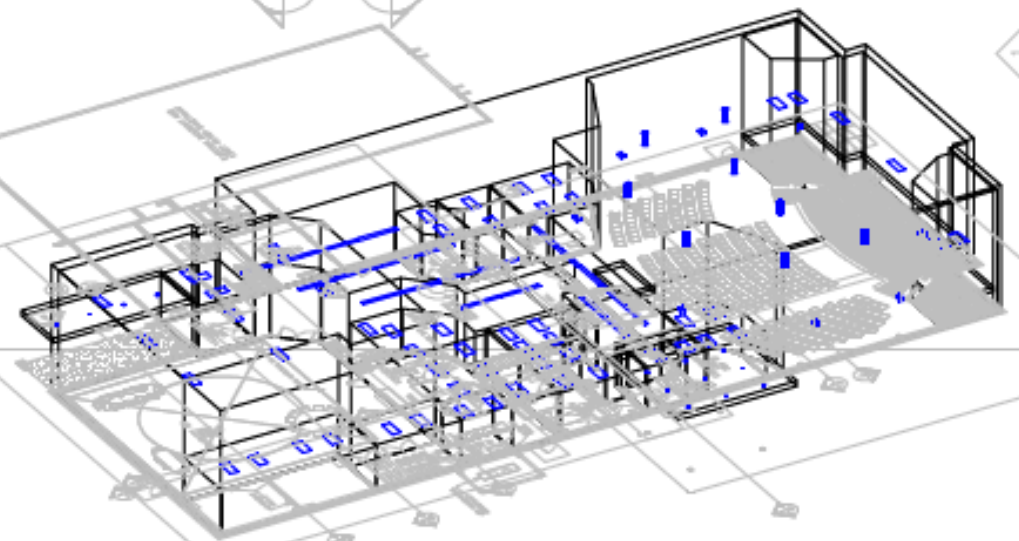
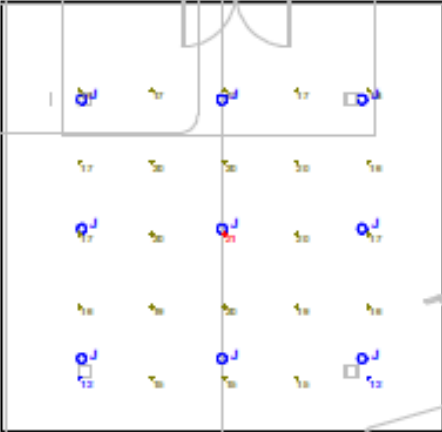


LUMINAIRE SCHEDULE

Symbol	Label	Qty	Catalog Number	LLF	Watts
○	A	8	P-25-50-LED1 (1240L)	0.90	90
□	B	8	WS15-16LN (218 L)	0.90	21
□	D	16	LCAT24-30W-EDU	0.90	24
□	E	12	LCAT24-30W-EDU	0.90	30
□	F	8	LCAT24-30W-EDU	0.90	30
□	G	8	LCAT24-30W-EDU	0.90	40
□	H	11	LL14-135WAGT-EDU	0.90	150
—	I	21	C518-44L-55K	0.90	41
○	J	13	LRM6L-40K-50V-A-CO-10	0.90	30

STATISTICS

Description	Symbol	Avg	Max	Min	Max/Min	Avg/Min
Canopy Area	+	17fc	21fc	0 ft	1.81	1.81
Community Rm	+	48fc	65fc	30 ft	1.91	1.61
Entrance area	+	46fc	65fc	30 ft	2.51	1.81
Hall	+	80fc	140ft	50 ft	2.81	1.61
Kitchen 20	+	55fc	67fc	30 ft	2.01	1.71
Narthex	+	41fc	51fc	19 ft	2.71	2.21
Office 13	+	48fc	53fc	40 ft	1.21	1.11
Ramp	+	16fc	19fc	11 ft	1.71	1.51
Side Stage	+	33fc	50fc	0 ft	3.81	2.51
Stage	+	65fc	89fc	40 ft	1.91	1.61
Women 14	+	36fc	41fc	30 ft	1.31	1.11



© 2015 Peak Electric Inc. All rights reserved. www.peakelectric.com

Benefits of Peak

“Building Success Together”

- **Complete Design Solutions** – From driveway entrances to office interiors
- **Improved Scheduling** – Streamlined processes for on-time delivery
- **Right Product for Every Application** – Tailored solutions for your specific needs
- **Confidence in What You’re Getting** – Transparent specifications and quality assurance
- **One Source for All Your Needs** – Simplified procurement and coordination
- **Access to the Latest LED Technology** – Cutting-edge products for efficiency and performance
- **Proven Performance** – Reliable solutions backed by decades of experience
- **Expert Support** – Guidance from LED and electrical specialists



Energy



- – Power Distribution Equipment HV, MV, and 600V below
- - Pad mount switches, transformers, cable, power quality, UPS Systems



Electrical Supplies

- Conduit – Rigid, SS Pipe, EMT, PVC, PVC-Coated
- Wire – Southwire Okonite Alan Wire
- TeleData- Wire, cabinets, connectivity
- Grounding- Harger
- Firestop – STI
- Cable Tray – Cabofil, Husky, Chalfant, Bline, Nvent, Atkore



Southwire®



CALPIPE INDUSTRIES™
Incorporated

Appleton®



HeritagePlastics

OMNICABLE

**WEST PENN
WIRE** Since 1971
AV, SECURITY & NETWORKING SOLUTIONS



A PART OF **atkore**
INTERNATIONAL

Electrical Tools and Fasteners



- Southwire Tools, Current Tools, I-Tools
- Hardware – Screws, nuts, bolts, mall hand tools, and bits
- Pulling rope, electrical tape, and measuring tape etc.



LENOX



BLACK & DECKER

IDEAL



STANLEY

KLEIN TOOLS

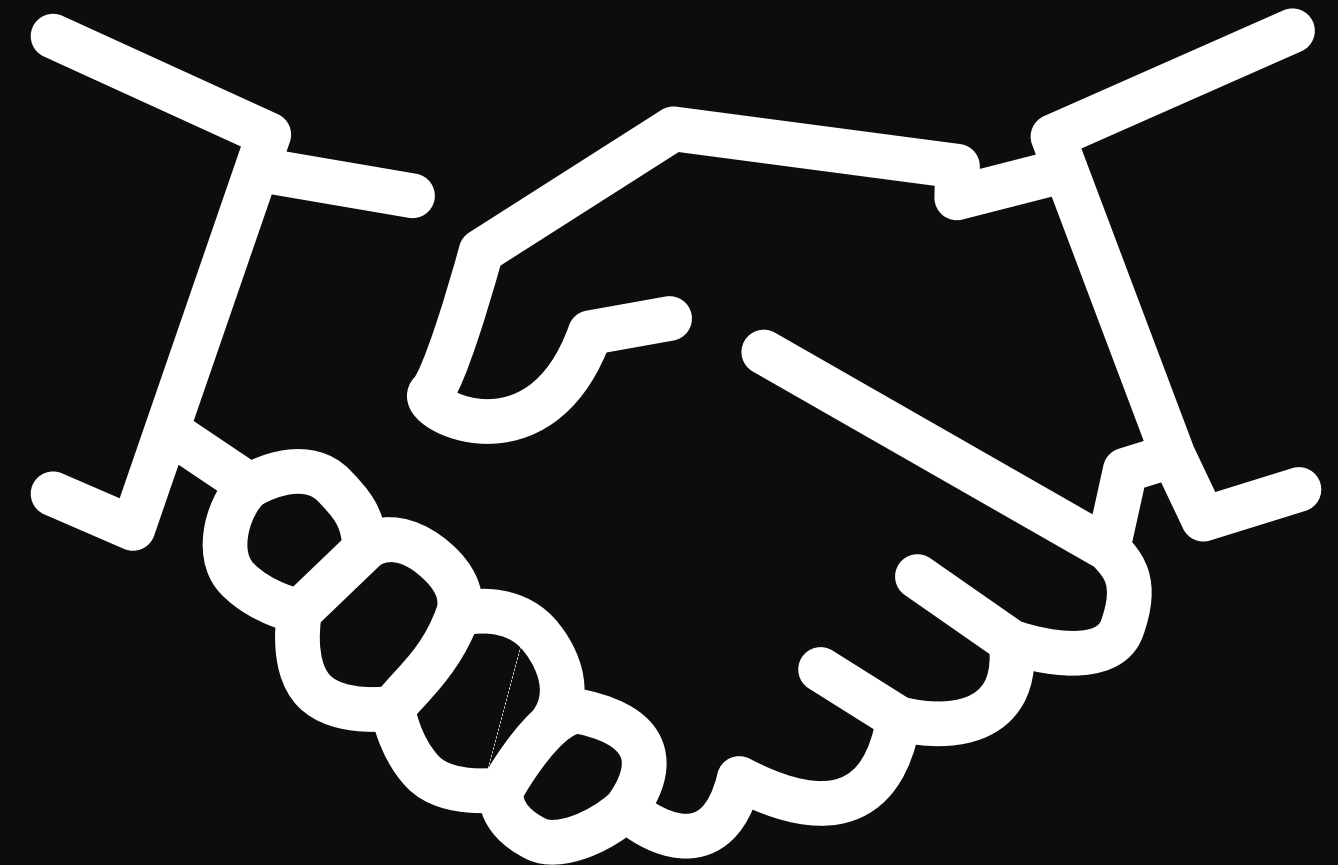


DEWALT



Partnering with Peak

- **Reliable Sourcing Capabilities** – Ability to secure the right products quickly and efficiently
- **Certifications with Benefits** – Minority Business Enterprise status adds diversity credits and compliance value
- **Owner-Level Commitment** – Focus, attention, and accountability from leadership
- **Collaborative Partnership Approach** – Enhances efficiency and reduces risk through teamwork
- **Proven Jobsite Experience** – Hands-on expertise for smooth integration and execution
- **Long-Term Relationship Focus** – Building partnerships that extend beyond a single project



QUESTIONS & ANSWERS

