



Peak Electric Inc.

320 North Byrne Rd.
Toledo, OH 43607 :
P: 419.726.4848
F: 419.726.6206

CAPABILITY STATEMENT

Past Performances

- Gilbane - Pre-Purchase**
 - Washington Local Schools New Middle School BGSU Chiller Upgrade \$900,000
- City of Bowling Green, Columbus, City of Tipp City** \$5.1M
 - Transformers, Hapco Poles, Holophane, MV breakers
 - Fiberglass Conduit, Okonite Wire, G&W Switches
- Robinson Construction** \$700,000
 - Arlington Schools - Siemens Switchgear
 - DFSM- Pre-Purchase XFMR
- ODOT District 1-2-3-4-5-6** \$250,000
 - GE Lighting, Philips /Advace Lamps and Ballast
 - Cree Lighting, Misc Electrical Supplies, Hubbell Lighting
- Federal Supply Contracts** \$3.2 M
 - Siemens SF6 Breakers
 - Arizona Substation Equipment
 - Cooper Power Fuses
 - Vertiv UPS Systems
 - Eaton MV Pad Mount Transformers
 - Siemens Voltage Regulators
 - Highmast Poles and Airport Lighting
 - Eaton Nova Reclosures
- DODD - Zenith** \$2.2M
 - 5 DODD Sites in Ohio G&W MV Switches
 - NvENT Sectionalizer Siemens Switchboard
- Andolyn Hospital** \$2.5M
 - Ohio CAT
 - 2000kW Diesel Generator Paralleling Gear Transfer Switches
- Messer Construticon** \$3.4M
 - Grant Medical Hospital - Switchgear
 - Shelby Hospital - Switchgear

Differentiators

- Bonding at \$3M Single
- \$25M Aggregate
- Teaming
- 55 years of experience in the Distribution Industry
- Experience in construction of buildings, mechanical systems and preventive maintenance
- Full line electrical distributor
- Current capabilities of \$25M in annual project management
- Multidiscipline Construction
- Expertise
- Composite Design Direct with end user, Partner with Installer, Design with A+E

Core Competencies

Customer Centric: Provide value added services with the flexibility for custom customer solutions. Project Management: Facilitating, developing, coordinating, leading, and delivering quality projects on time and within budget. Mission Focused: Safe, efficient, on schedule and cost controlled.

COMPANY OVERVIEW

Established in 2000 as an electrical contractor, Peak Electric Inc. has evolved into a full-line electrical distributor. We specialize in everything from everyday tools and facility maintenance supplies to critical high-voltage infrastructure, including substation transformers and MV gear.

Peak continues to grow by offering pre-purchase support, project management, and first-class customer service—ensuring every project is delivered with precision and reliability.

COMPANY DATA

DUNS: ~~0000~~ 0081

CODE: 7E3C6

NAICS CODES:

236210 – 236220 – 238210
333120 – 335110 – 335129
335311 – 335313 – 335314
335512 – 335931 – 335932
335999 – 423120 – 423610
423830 – 444190 – 811219

CERTIFICATIONS:

MBE DBE EDGE
OMSDC SBE

Rhys Petee Vice-President P:
419.726.4848
Rpetee@peakelectrictoledo.com



Peak Electric Inc.

320 N Byrne Rd
Toledo , OH 43607 P:
419.726.4848

CAPABILITY STATEMENT

Past Performances

- ODOT - Construction Projects**
 - ODOT Bucyrus new facility, Cree Lighting **\$400,000**
 - ODOT District 4 Holophane High Mast Poles Supply
- **City of Bowling Green, Columbus, City of Tipp City** **\$5.1 M**
 - Transformers, Hapco Poles, Holophane, MV breakers
 - Fiberglass Conduit, Okonite Wire, G&W Switches
- **Ohio Turnpike Commission** **\$500,000**
 - Hapco Poles
 - AEL / Holophane Fixtures
 - Akron Foundry T-Bases Buchanan Inline Fuses Holders
- **ODOT District 1-2-3-4-6** **\$250,000**
 - Ge Lighting, Philips/Advance Lamps and Ballast
 - Cree Lighting Misc Electrical Supplies Hubbell Lighting
- **Federal Supply Contracts** **\$3.2 M**
 - Western Area Power
 - Social Security Administration
 - Bureau of Reclamation
 - ATF
 - DLA Maritime
 - US Coast Guard
 - Office of Acquisition
 - Ohio ANG
- **Dupont** **\$250,000**
 - Prepurchase Substation - Steel Structure G&W Misc HV items
- **Andolyn Hospital** **\$2.5 M**
 - **Ohio CAT**
 - 2000kW Diesel Generator Paralleling Gear Transfer Switches
- **First Energy 3-Year Contract** **\$4.4 M**
 - Ermco Transformer Supply, Bierer Tools, Lighting Supplies

Differentiators

- Bonding at \$3M Single \$25M Aggregate
- Teaming
- 55 years of experience in the Distribution Industry
- Experience in construction of buildings, mechanical systems and preventive maintenance
- **Full line electrical distributor**
- Current capabilities of \$25M in annual project management
- Multidiscipline Construction Expertise
- Composite Design Direct with end user, Partner with Installer, Design with A+E

Core Competencies

- Customer Centric: Provide value added services with the flexibility for custom customer solutions.
- Project Management: Facilitating, developing, coordinating, leading, and delivering quality projects on time and within budget.
- Mission Focused: Safe, efficient, on schedule and cost controlled.

COMPANY OVERVIEW

Established in 2000 as an electrical contractor, Peak Electric Inc. has evolved into a full-line electrical distributor. We specialize in everything from everyday tools and facility maintenance supplies to critical high-voltage infrastructure, including substation transformers and MV gear. Peak continues to grow by offering pre-purchase support, project management, and first-class customer service—ensuring every project is delivered with precision and reliability.

COMPANY DATA

DUNS: 10-196-0081

CAGE CODE: 7E3C6

NAICS CODES:

236210 – 236220 – 238210
 333120 – 335110 – 335129
 335311 – 335313 – 335314
 335512 – 335931 – 335932
 335999 – 423120 – 423610
 423830 – 444190 – 811219

CERTIFICATIONS:

8(a) MBE DBE EDGE
 OMSDC SBE

CONTACT

Rhys Petee
 Vice-President
 P: 419.726.4848
 Rpetee@peakelectrictoledo.com



Peak Electric Inc.

320 North Byrne Rd.
Toledo, OH 43607
P: 419.726.4848
F: 419.726.6206

COMPANY OVERVIEW

Established in 2000 as an electrical contractor, Peak Electric Inc. has evolved into a full-line electrical distributor. We specialize in everything from everyday tools and facility maintenance supplies to critical high-voltage infrastructure, including substation transformers and MV gear.

Peak continues to grow by offering pre-purchase support, project management, and first-class customer service—ensuring every project is delivered with precision and reliability.

CAPABILITY STATEMENT

Past Performances

• Camp Perry Renovations	\$2,541,000.00
• Wright Patterson AFB - Hanger Windows	\$3,700,000.00
• U.S. Coast Guard Maintenance Contract	\$355,000.00
• Youngstown Air Reserve Station	\$185,000.00
• U.S. Coast Guard – Duluth, MN Dredging	\$291,000.00
• Wright Patterson AFB – Area A Sewer Repair	\$1,250,168.00
• U.S. Coast Guard – Moon Island Repair	\$221,450.00
• U.S. Coast Guard – Potable Waterlines	\$311,285.00
• U.S. Coast Guard – Marblehead Demolish Asset	\$26,780.00
• U.S. Coast Guard – Major M&R SFO OPCEN	\$3,193,619.00
• U.S. Coast Guard – Replace Hangar Condensing	\$145,200.00
• U.S. Coast Guard – Replace Floating Dock	\$191,200.00
• 180 th Air Force – Ramp Lighting	\$423,845.00

Differentiators

- Bonding at \$5 Million Single/\$10 million Aggregate
- Joint Venture Teaming
- 55 years of experience in the Electrical Industry
- 20 years of experience in Mechanical Systems
- Experience in the construction of buildings, mechanical systems, and preventive maintenance
- Full line electrical distributor
- Current capabilities of \$8 million in annual project management
- Multidiscipline Construction Expertise
- Composite Design Direct with end user, Partner with Installer, Design with A+E
- OMSDC-Chair Toledo Region
- TASBA and Toledo Chamber

Core Competencies

- Customer Centric: Provide value-added services with the flexibility for custom customer solutions.
- Project Management: Facilitating, developing, coordinating, leading, and delivering quality projects on time and within budget.
- Mission Focused: Safe, efficient, on schedule and cost-controlled.
- Team Driven: Develop, build, and maintain a team that has the knowledge, resources, and drive to safely satisfy the customer requirements and project needs.
- Pre-Purchase Specialist

COMPANY DATA

DUNS: 10-196-0081

CAGE CODE: 7E3C6

NAICS CODES:

236210 – 236220 – 238210
333120 – 335110 – 335129
335311 – 335313 – 335314
335512 – 335931 – 335932
335999 – 423120 – 423610
423830 – 444190 – 811219

CERTIFICATIONS:

8(a) MBE DBE EDGE
OMSDC SBE

CONTACT

Milton T. McIntyre
President
P: 419.726.4848
MMcIntyre@peakelectrictoledo.com



320 N. Byrne Rd
Toledo, OH 43607
419-726-4848

Line Card

BATTERIES
RAY-O-VAC

CABLE ACCESSORIES
3M
EMC
HERITAGE
NSI/TORK
ILSCO

CABLE TRAY
CABLOFIL
CABLE MANAGER
CHALFANT
TJ COPE
MP HUSKY
WBT TRAY

CABLE/WIRE
ALAN WIRE
SOUTHWIRE
CME
DRAKA
HOUSTON WIRE & CABLE
OKONITE
OMNI
PRIORITY CABLE
PRYSMIAN/GENERAL CABLE
SERVICE WIRE
TF KABLE

CONDUIT
CAL PIPE
GIBSON
HERITAGE
WHEATLAND
WESTERN TUBE
ROB ROY
PLASTI-BOND
QUEEN CITY
WIREMOLD

CONDUIT FITTINGS
ARLINTON
BRIDGEPORT
CROUSE HINDS
KILLARK
OZ GEDNEY
ORBIT
TOPAZ
APPLETON

DATA & COMMUNICATIONS
BELDEN
HITACHI
LIFE LINE
RAMTEL
RIB
TAPPAN
WEST PENN
WIREMOLD

DISTRIBUTION & EQUIPMENT ELECTRIC HEAT
ABB
EATON/COOPER
FEDERAL PACIFIC
G&W
GE POWER SOLUTIONS
IEM
SIEMENS
CONTROLLIX

ELECTRIC HEAT
BERKO
DANFOSS
EGS EASY HEAT
SELPRO
TPI

ENCLOSURE/WIREWAY
APPLETON
B-LINE
COXLIN
EXM
HAMMON
KINNEY MFG
MILBANK
WIEGMANN

FIRE BARRIER
3M
STI

FUSES
COOPER
MERSEN
S&C

GROUNDING
HARGER
I-GARD
ILSCO
NSI
PENN UNION

HAND DRYER
WORLD DRYER
DYSON

INDUSTRIAL FANS
ENVIROFAN
WESTINGHOUSE

HARDWARE
EMC
EPCO
HALEX
MORSE
NSI
SELECTA

LAMP & BALLAST/DRIVERS
HALCO
LEDVANCE
OSRAM SYLVANIA
EYE LIGHTING
RAB
SATCO
VENTURE LIGHTING
WESTINGHOUSE

LIGHTING CONTROL
CRESTRON
HUBBELL BUILDING AUTOMATION
INTERMATIC
LEVITON
STEINEL
TORK
WATTSTOPPER

(INGROUND)/ FLOOR BOXES
FSR
LEW
OLD CASTLE
RACEWAY SOLUTIONS
SYNERTECH

SURGE PROTECTIONS
ASCO
GE
JOSLYN SURGE
SIEMENS

SMOKE DETECTORS
KIDDE FIREX

STRUT
FLEX STRUT

TEST & MEASUREMENT
AMEC
TORK

TOOLS
CURRENT TOOLS
DEWALT
MORSE
IT TOOLS*LENOX
MC CUTTER
MORRIS
ORION ROPE
STOUT
KLIEN TOOLS

TRANSFORMERS
ABB
ACME
COOPER
FEDERAL PACIFIC
HAMMOUND
JEFFERSON
MGM
PQI TRANSFORMERS
ERMCO
SUNBELT
VIRGINIA

WIRE DEVICES
EATON/ARROW HART
LEVITON

WIRE CONNECTORS
3M
NSI

POLES
BROWNWOOD
CMT
KING LUMINAIRE
NAFCO
RAB
VALMONT
HAPCO



Certified MBE
Minority Business Enterprise

www.peakelectrictoledo.com



Lighting Line Card

A. LIGHT
 AB CHANCE
 ACCLAIM LIGHTING
 AIREY-THOMPSON LIGHTING
 ALERA LIGHTING
 ALUMEN 8A
 AZZ RIGALITE
 AMERICAN BRIGHT
 AMERICAN GREEN TECHNOLOGY
 AMERLUX EXTERIOR
 AMERLUX LIGHTING SOLUTIONS
 APPLETON
 ARC LIGHTING SYSTEMS/FAEBER
 ARCHITECTURAL AREA LIGHTING
 ARTFORMS
 ATOMIS LIGHTING
 AXO LIGHT
 BARBICAN
 BEACON
 BEGHELLI
 BEGHELLI LUCE`
 BELFER GROUP
 BEST LIGHTS
 BETA LED
 BETA LIGHTING
 BIRCHWOOD
 BOCK LIGHTING
 CALIFORNIA ACCENT LIGHTING (CALI)
 CAMMAN INDUSTRIES
 CARMANAH SOLAR
 CASTALDI
 CERTOLUX
 CHARLOTTE INTERNATIONAL PARTNERS
 CLASSIC LAMP POSTS
 CMT
 COLUMBIA LIGHTING
 CONTRAST LIGHTING
 CREE LIGHTING
 CRENSHAW
 CSL
 DARK
 DIALIGHT LIGHTING
 DAY-O-LITE
 DAYBRITE
 DESIGN PLAN
 DEVINE LIGHTING
 DIMONOFF
 DUAL-LITE
 EDGE LIGHTING
 EDWARDS SIGNALING
 EGOLUCE/EGO LED
 ELATION ARCHITECTURAL
 ELIO
 ELITE
 ELLIPTIPAR
 EMBER LED
 EMERGE LED
 EMERGITLITE

ENERGY FOCUS
 ENGINEERED REFLECTOR PRODUCTS
 ENVOY
 EVENLITE
 EYE LIGHTING
 FIBERSTARS
 FIRE RATED SPECIALITIES
 FIREFLY LED
 FOCUS
 FORUM LIGHTING
 FRAQTIR
 GAMMALUX
 GARDCO
 GE LIGHTING
 GIGA TERA
 GLOBAL LIGHTING
 GREENLEE LIGHTING
 GBA LIGHTING
 HALCO LIGHTING
 H.E. WILLIAMS
 HOLOPHANE
 HUBBELL LIGHTING
 I-LED
 ILLFARI
 IMPACT ARCH LIGHTING
 INSIGHT
 INTENSE LIGHTING
 INTER-LUX
 INTRIGUE
 IOTA
 J & J ELECTRONICS
 JESCO LIGHTING
 JUNO
 KILLARK
 KIM LIGHTING
 KING LUMINAIRE
 KRAMER LIGHTING
 KW INDUSTRIES
 LEDCONN
 LEHIGH DIMMING
 LEHIGH ELECTRIC
 LEVITON
 LIGHT EDGE
 LIGHTWILD
 LINEAR LIGHTING
 LSI INDUSTRIES
 LUMINAIRE LED
 LUSIO LED
 LVS
 MAINSTREET LIGHTING
 MARTINI
 METALUMEN
 MHT
 MICHAELS LIGHTING
 MILLERBERND LIGHTING
 NAFCO INTERNATIONAL

NATIONAL CATHODE
 NAVALITE
 NERI
 NEW STAR LIGHTING
 NICOR
 NILAND CO.
 NIPPO
 ORGANIC LIGHTING
 ORGATECH+OMEGALUX
 OSRAM/SYLVANIA
 P&K POLES
 PATHWAY
 PEACHTREE LIGHTING
 PERFECT POWER
 PERFORMANCE IN LIGHTING
 PHILIPS
 PHOENIX PRODUCTS
 PUNNACLE ARCHITECTURAL LIGHTING
 PLANLIGHT
 PLUG-N-GO
 PROGRESS
 PRESCOLITE LIGHTING
 PRISMA (PERFORMANCE IN LIGHTING)
 PURE LIGHTING
 RAB
 RAMBUSCH
 REBELLE
 RED SKY
 RYTHUR PURDY
 SCOTT ARCHITECTURAL LIGHTING
 SECURITY LIGHTING SYSTEMS
 SENTRY ELECTRIC
 SOLERA
 SPAULDING LIGHTING
 SPORTSLITER SOLUTIONS
 STERNER LIGHTING SYSTEMS
 SPAULDING LIGHTING
 SPORTSLITER SOLUTIONS
 STERNER LIGHTING SYSTEMS
 TBR ARCHITECTURAL LIGHTING
 TCPI
 THE LIGHT EDGE
 TRE CI LUCE
 V2 LIGHTING
 V2 LIGHTING GROUP VISIONEERING
 VALMONT
 WAVE LIGHTING
 W.F. HARRIS
 WEVERDURCE
 WESTINGHOUSE

LIGHTING CONTROLS
 CRESTON
 EATON
 HUBBELL BUILDING AUTOMATION
 LEVITON
 STIENEL
 WATTSTOPPER
 SENSOR WORX



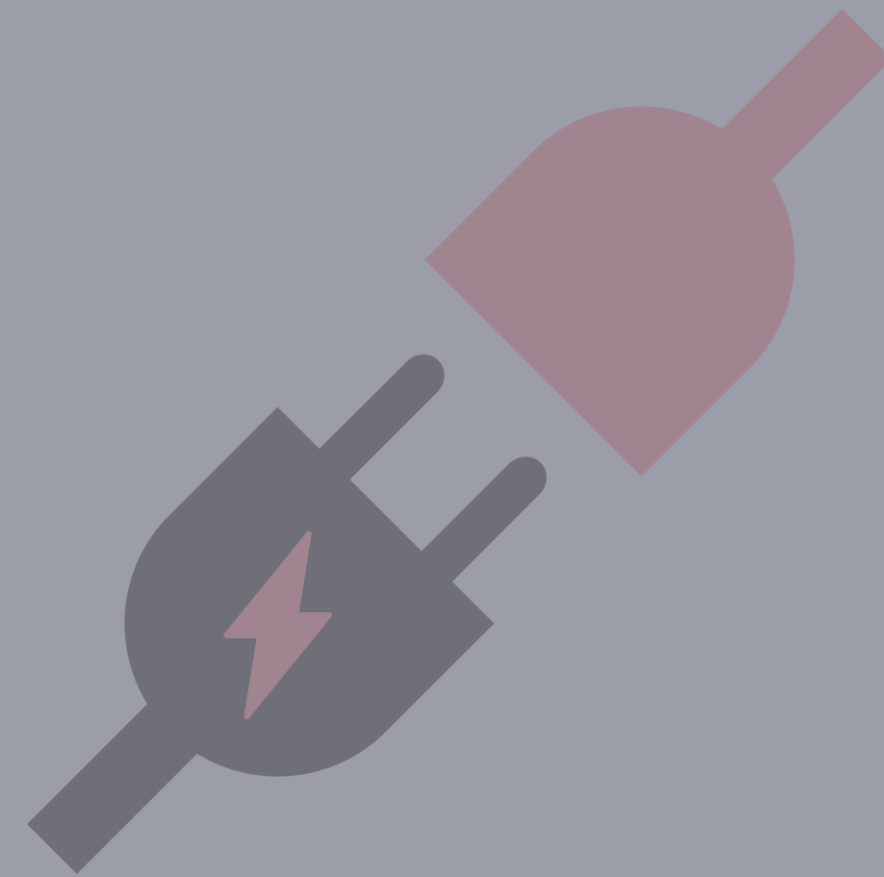
www.peakelectrictoledo.com



WHO WE ARE

Peak Electric Inc. is a wholesale electrical supply company and full-line distributor with over **50 years of experience**. Based in Toledo, Ohio, we **serve Southeast Michigan and Northwest Ohio** with local inventory and same-day delivery.

Representing **300+ manufacturers**, we specialize in LED lighting and offer a comprehensive range of products. **Customer-centric and project-focused**, we are committed to delivering the highest quality solutions through continuous improvements in technology, cost efficiency, and logistics.



Our Collaborative Approach

Project Base Distributor

- Team Capabilities
 - We we exercise the ability to work with multiple vendors/service companies
 - We collaborate seamlessly at the project management level and ensure full integration of our services on the jobsite.
- Experience with large projects –
 - SSOE Asend Battery Plant JDRM- St Johns HS –
 - NEXAS – Dupont Substation
 - MESSER Grant Medical Hospital Shelby Hospital
 - GILBANE – BGSU Chiller Upgrade – WLS Middle School
 - JeDunn - Bowling Green - Data Center



JeDunn - Bowling Green - Data Center
Temporary Power Provided



COMPLETED PROJECTS

- Toledo Public Schools
- WAPA – Airizona Substations, VR's Pad mount Xfmrs
- Dupone - Substation
- Honda East Liberty Plant
- Air Gas
- Campbell Soup
- CSX
- Andersons
- Sunoco Pipeline
- Mobis (Jeep Supplier)
- City of Findlay
- BGSU
- University of Toledo



Power Distributions

- Switchgear
- Circuit Breakers
- Safety Switches
- Transformers
- Bus Ducts
- Bus Bars
- Relays
- Panelboards
- Load Centers
- Battery Energy Storage Systems
- Capacitor Banks
- Control Cabinets



SIEMENS

EATON

ABB



PEAK
ELECTRIC INC.

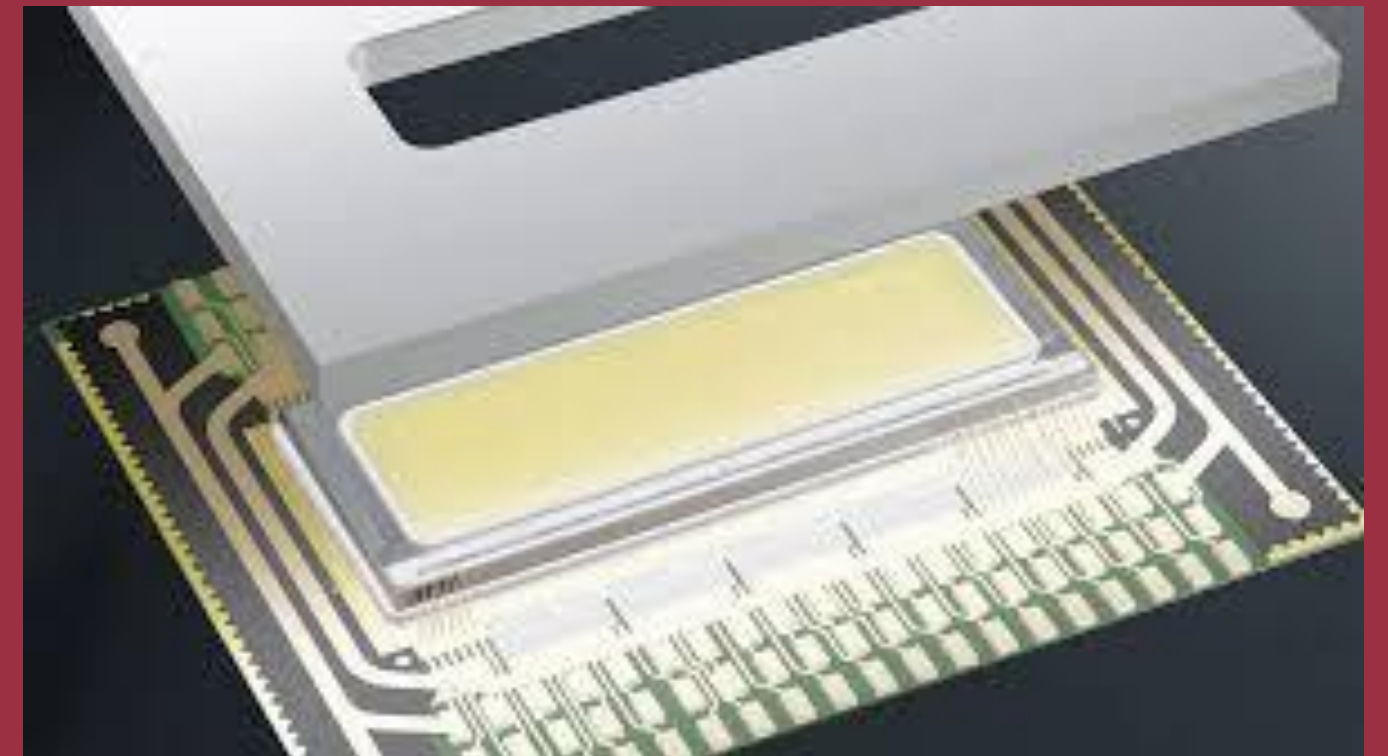
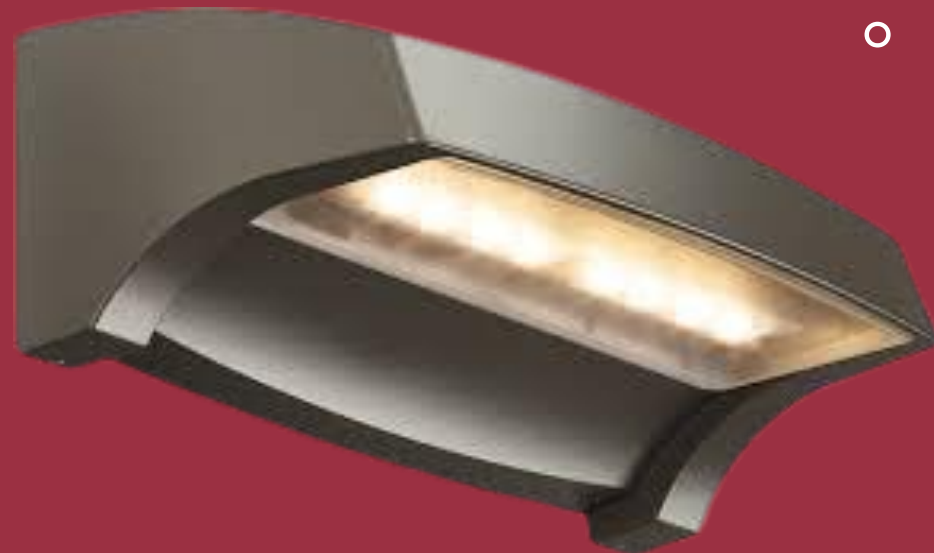
LIGHTING

- Controls
 - Building automation, sensors, lighting control panels
- LED - Latest in energy and maintenance savings
- Exterior - Specialist in Good/Better/Best Applications
- Interior - Products for all Commercial and Industrial needs
- Emergency – Inverters, exits, regress safety
- Layout and Design Services



YOUR LIGHTING/LED EXPERIENCES

- What is your current knowledge of LED lighting?
- Have you encountered any technical concerns or challenges?
- What are your primary application needs? Required light levels
 - Customer-specific requirements
 - Security considerations
 - Exterior areas and warehouse spaces
 - Process and manufacturing areas
 - Office, meeting rooms, and classified spaces





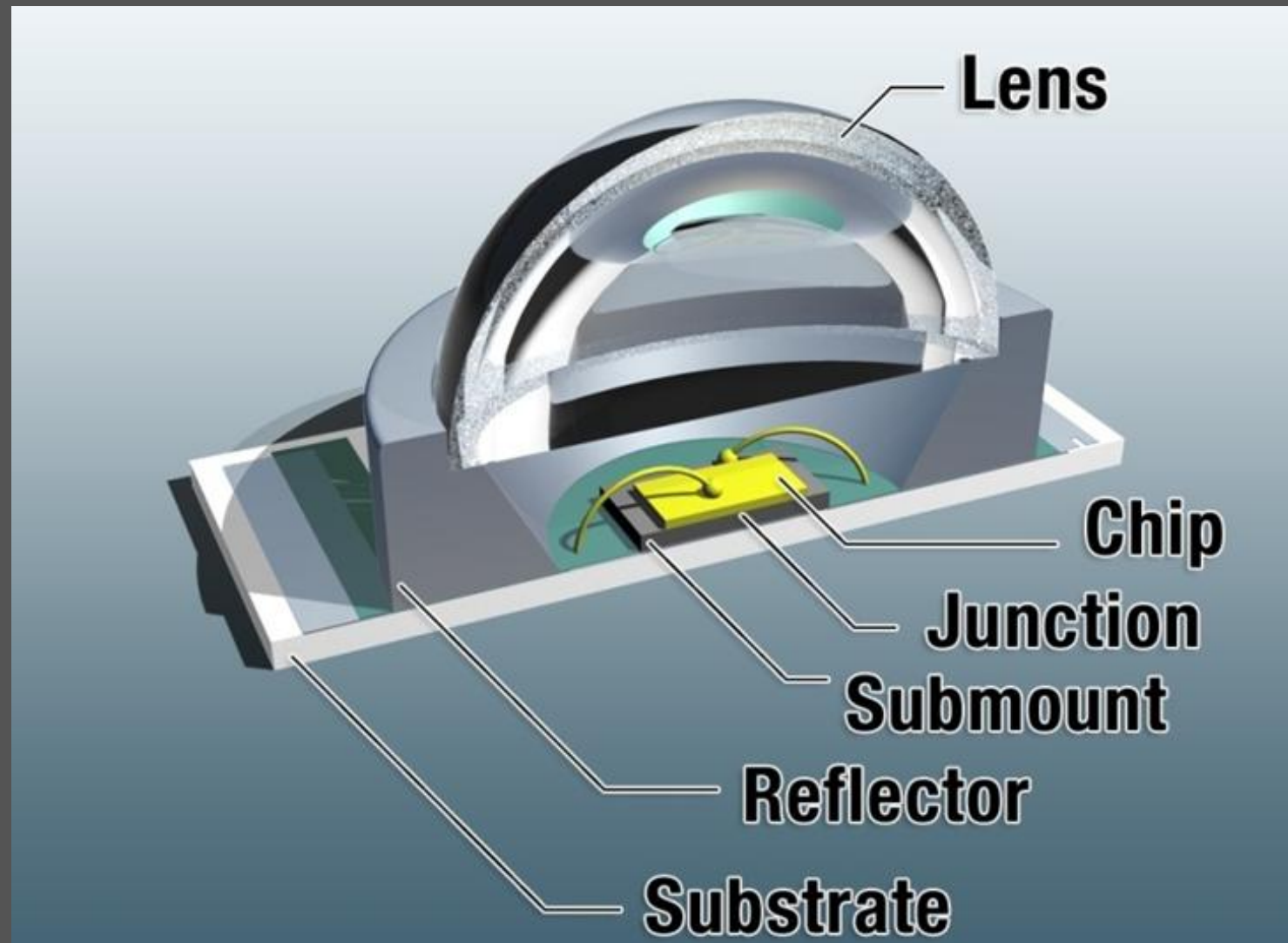
LED LIGHTING HISTORY

- LED'S have a history of dating back over 40 years
- Technology has advanced over the last 5 years
- Performance, efficiency and manufacturing cost have made LED an industry standard
- Controls are important with LED
 - Energy efficiency and extends life of the product
- LED quality standards
 - LM80 (Measuring Lumen loss 6000 HR Test)
 - TM21 (IES calculator for lifetime projections)
 - DLC





LED BENEFITS/CONCERNS



- No maintenance for 12-30+ years
- Energy Saving of 50-80 %
- Instant ON/OFF w/o Cycling issues
- Dimmable, photocell or motion control improves life



- Heat management affects LED life
- Color shifting
- Control of light in usable IES patterns
- Reputable / Proven manufactures
- What is Light Emitting Diode (LED)?



PEAK ELECTRIC INC.

LED EXTERIOR DESIGNS



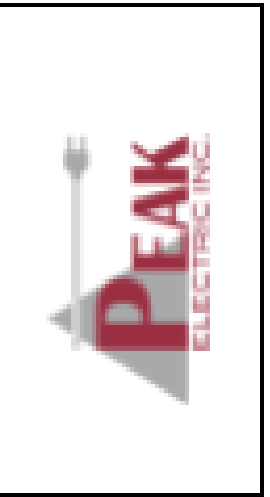
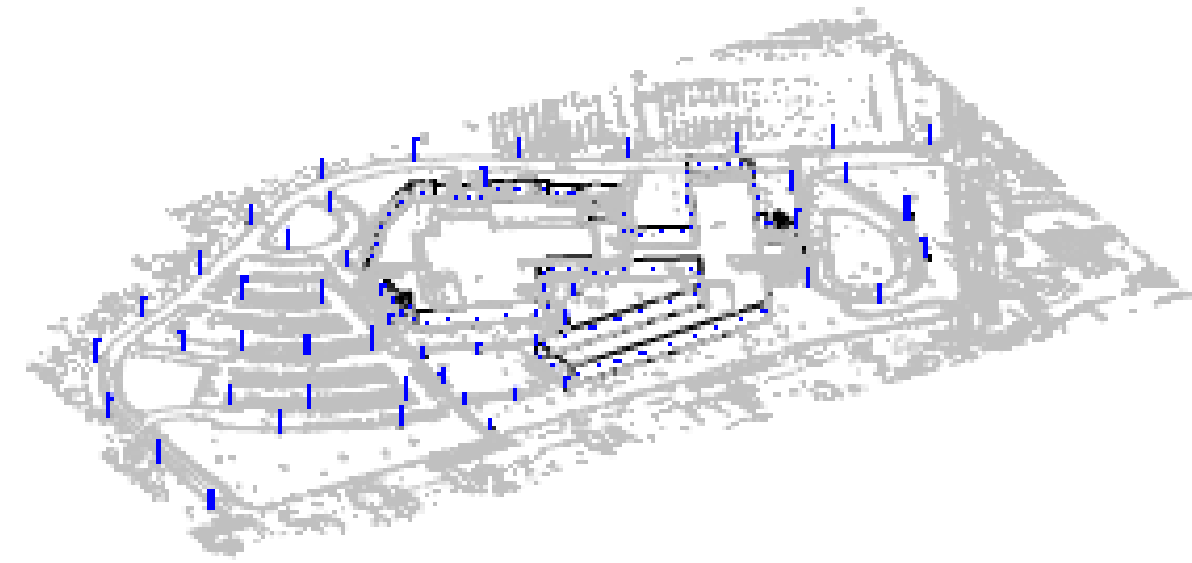
vs

LED

HID

LUMINAIRE SCHEDULE								
Symbol	Level	Qty	Category Number	Description	Level	File	Location, L&F	Notes
■	A	11	00000000	COMPOUND FROM THE 000 Series Line Luminaire, Type I, 100W, 4' x 4' (4' x 4' Pole) (4' x 4' Pole)	COMPOUND FROM THE 000 Series Line Luminaire, Type I, 100W, 4' x 4' (4' x 4' Pole) (4' x 4' Pole)	00000000	00000000	00000000
■	B	14	00000000	COMPOUND FROM THE 000 Series Line Luminaire, Type II, 100W, 4' x 4' (4' x 4' Pole) (4' x 4' Pole)	COMPOUND FROM THE 000 Series Line Luminaire, Type II, 100W, 4' x 4' (4' x 4' Pole) (4' x 4' Pole)	00000000	00000000	00000000
■	C	1	00000000	COMPOUND FROM THE 000 Series Line Luminaire, Type III, 100W, 4' x 4' (4' x 4' Pole) (4' x 4' Pole)	COMPOUND FROM THE 000 Series Line Luminaire, Type III, 100W, 4' x 4' (4' x 4' Pole) (4' x 4' Pole)	00000000	00000000	00000000
■	D	7	00000000	COMPOUND FROM THE 000 Series Line Luminaire, Type IV, 100W, 4' x 4' (4' x 4' Pole) (4' x 4' Pole)	COMPOUND FROM THE 000 Series Line Luminaire, Type IV, 100W, 4' x 4' (4' x 4' Pole) (4' x 4' Pole)	00000000	00000000	00000000
■	E	2	00000000	COMPOUND FROM THE 000 Series Line Luminaire, Type V, 100W, 4' x 4' (4' x 4' Pole) (4' x 4' Pole)	COMPOUND FROM THE 000 Series Line Luminaire, Type V, 100W, 4' x 4' (4' x 4' Pole) (4' x 4' Pole)	00000000	00000000	00000000
■	F	10	00000000	COMPOUND FROM THE 000 Series Line Luminaire, Type VI, 100W, 4' x 4' (4' x 4' Pole) (4' x 4' Pole)	COMPOUND FROM THE 000 Series Line Luminaire, Type VI, 100W, 4' x 4' (4' x 4' Pole) (4' x 4' Pole)	00000000	00000000	00000000
■	G	27	00000000	COMPOUND FROM THE 000 Series Line Luminaire, Type VII, 100W, 4' x 4' (4' x 4' Pole) (4' x 4' Pole)	COMPOUND FROM THE 000 Series Line Luminaire, Type VII, 100W, 4' x 4' (4' x 4' Pole) (4' x 4' Pole)	00000000	00000000	00000000
■	H	28	00000000	COMPOUND FROM THE 000 Series Line Luminaire, Type VIII, 100W, 4' x 4' (4' x 4' Pole) (4' x 4' Pole)	COMPOUND FROM THE 000 Series Line Luminaire, Type VIII, 100W, 4' x 4' (4' x 4' Pole) (4' x 4' Pole)	00000000	00000000	00000000

STATISTICS						
Description	Symbol	Qty	Min	Max	Height	Height
External Luminaire	+	1,476	42'6"	54'6"	100'	20'
Recessed Luminaire	+	1,476	24'6"	28'6"	8'21"	20'
Recessed Luminaire	+	1,176	24'6"	28'6"	8'21"	20'
Recessed Luminaire	+	1,476	42'6"	54'6"	8'21"	20'
Recessed Luminaire	+	1,176	42'6"	54'6"	8'21"	20'

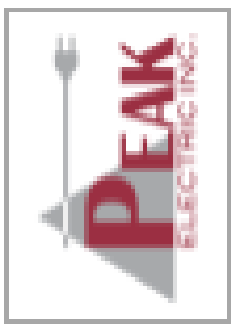
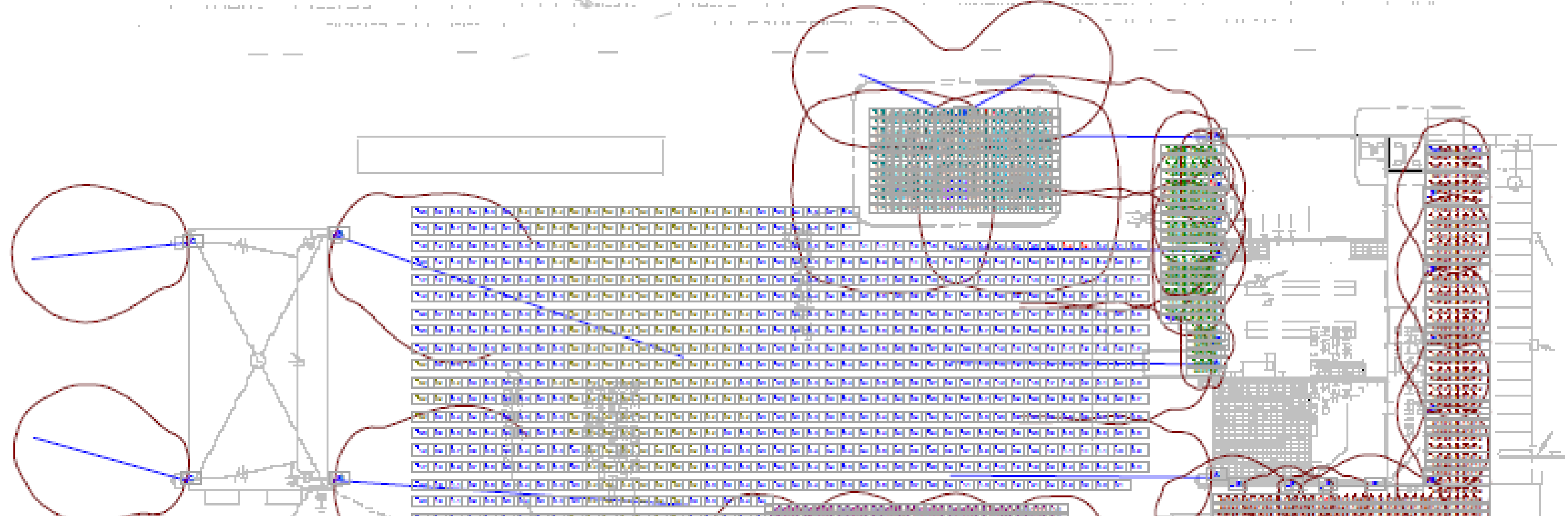
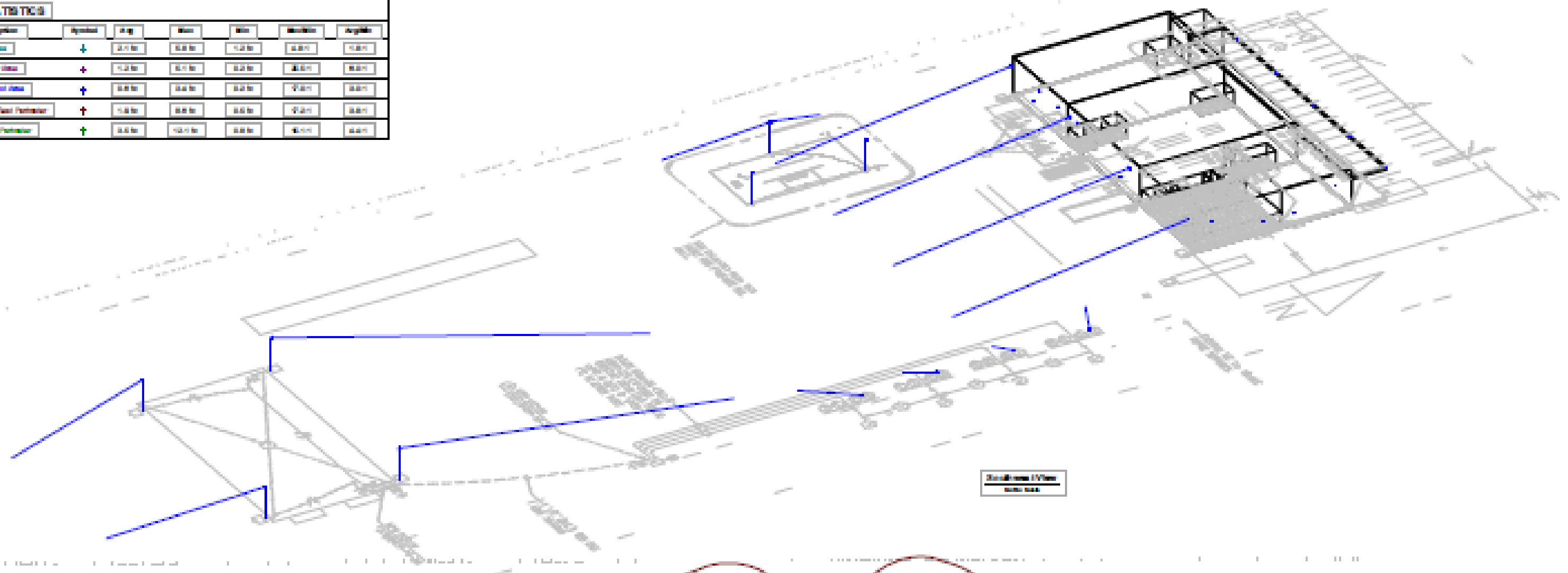


TPS
 Bowsher High School
 Lighting LED Upgrade

Designer	Al Specht
Date	

LUMINAIRE SCHEDULE					
Symbol	Label	Qty	Catalog Number	L.F.T.	Notes
□	A	4	OSRAM W 100 W S 1000 C 1000 P 1000 R 1000 S 1000 C 1000 P 1000 R 1000	0.00	200
□	B	2	OSRAM W 100 W S 1000 C 1000 P 1000 R 1000 S 1000 C 1000 P 1000 R 1000	0.00	200
□	C	2	OSRAM W 100 W S 1000 C 1000 P 1000 R 1000 S 1000 C 1000 P 1000 R 1000	0.00	100
□	D	1	OSRAM W 100 W S 1000 C 1000 P 1000 R 1000 S 1000 C 1000 P 1000 R 1000	0.00	200
□	E	2	OSRAM W 100 W S 1000 C 1000 P 1000 R 1000 S 1000 C 1000 P 1000 R 1000	0.00	100
□	F	4	OSRAM W 100 W S 1000 C 1000 P 1000 R 1000 S 1000 C 1000 P 1000 R 1000	0.00	200
□	G	4	OSRAM W 100 W S 1000 C 1000 P 1000 R 1000 S 1000 C 1000 P 1000 R 1000	0.00	200

STATISTICS						
Description	Symbol	Qty	Min	Max	Median	Avg
Total Area	↓	2.7 sq	0.0 sq	1.2 sq	0.8 sq	0.8 sq
Number of Area	+	1.2 sq	0.7 sq	0.2 sq	0.8 sq	0.8 sq
Number of Area	↑	0.8 sq	0.4 sq	0.2 sq	0.8 sq	0.8 sq
Number of Area	↑	1.8 sq	0.8 sq	0.8 sq	0.8 sq	0.8 sq
Number of Area	↑	0.8 sq	0.4 sq	0.8 sq	0.8 sq	0.8 sq

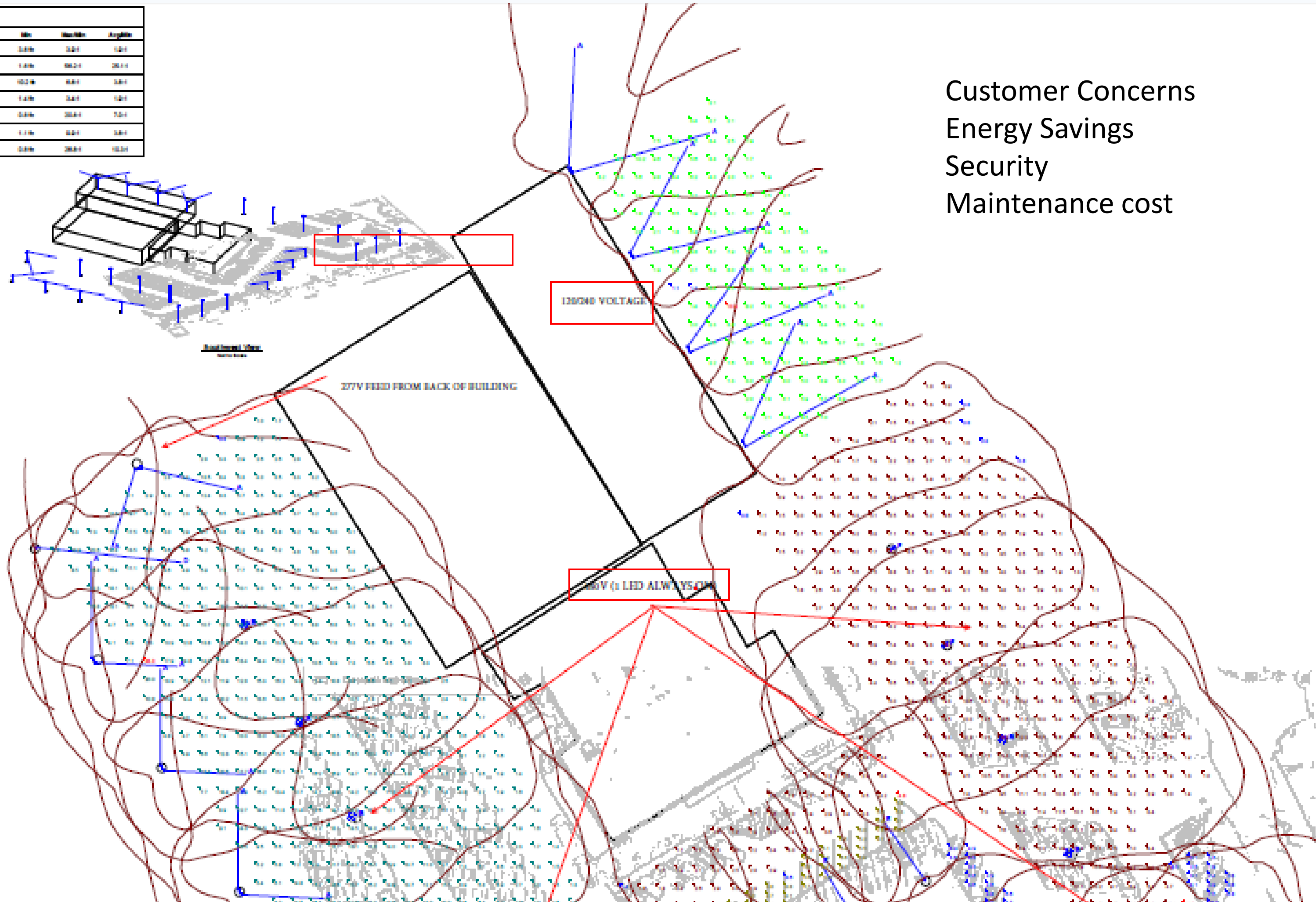


AirGas
Exterior
LED Lighting

Designer
A Specht, LC
Date

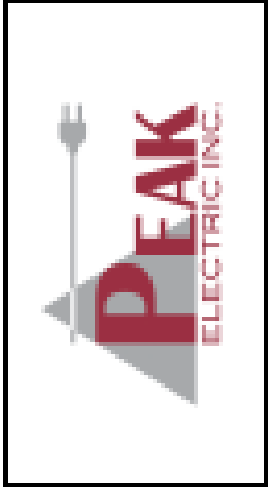
STATISTICS						
Description	Symbol	Qty	Min	Max	Avg	Angle
Point Line Center	+	676	16.2%	3.8%	3.8%	124
Point Line North	+	4016	96.0%	1.8%	98.2%	281.1
Point Line South	+	2854	67.2%	15.2%	8.8%	124
Main Bus Element	+	249	4.8%	1.4%	3.4%	124
Head Lot	+	646	15.5%	3.8%	3.8%	72.1
Head Line	+	426	10.2%	1.1%	8.8%	124
Head Lot	+	626	15.0%	3.8%	3.8%	124

LUMINAIRE SCHEDULE						
Symbol	Label	Qty	Label Number	LP	Watt	
+	A	8	000 Luminaire	0.07	200	
+	B	8	000 Luminaire	0.08	200	
+	C	8	000 Luminaire	0.07	100	
+	D	1	000 Luminaire	0.07	100	
+	E	4	000 Luminaire	0.07	200	
+	F	2	000 Luminaire	0.08	200	



Customer Concerns
 Energy Savings
 Security
 Maintenance cost

- 9 - 130 WATT LED 277V
- 28- 217 WATT LED 480V
- 12 - 330 WATT LED 480V
- 4 - 215 WATT LED 240
- 8 - 130 WATT LED 240

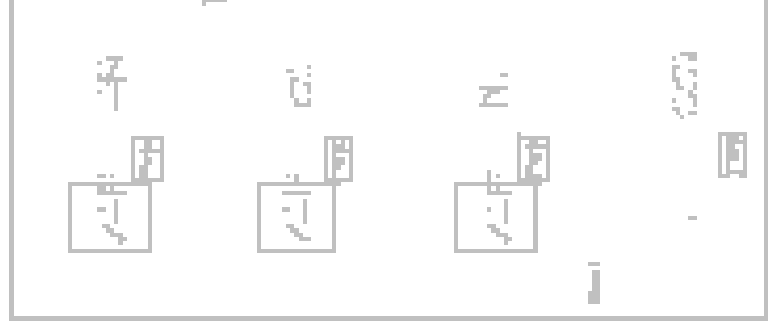
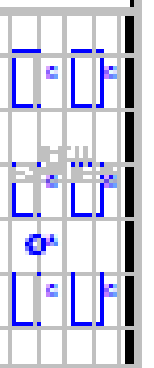
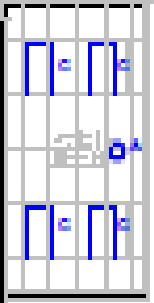
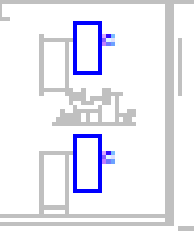
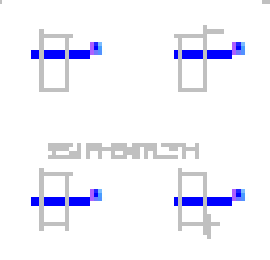
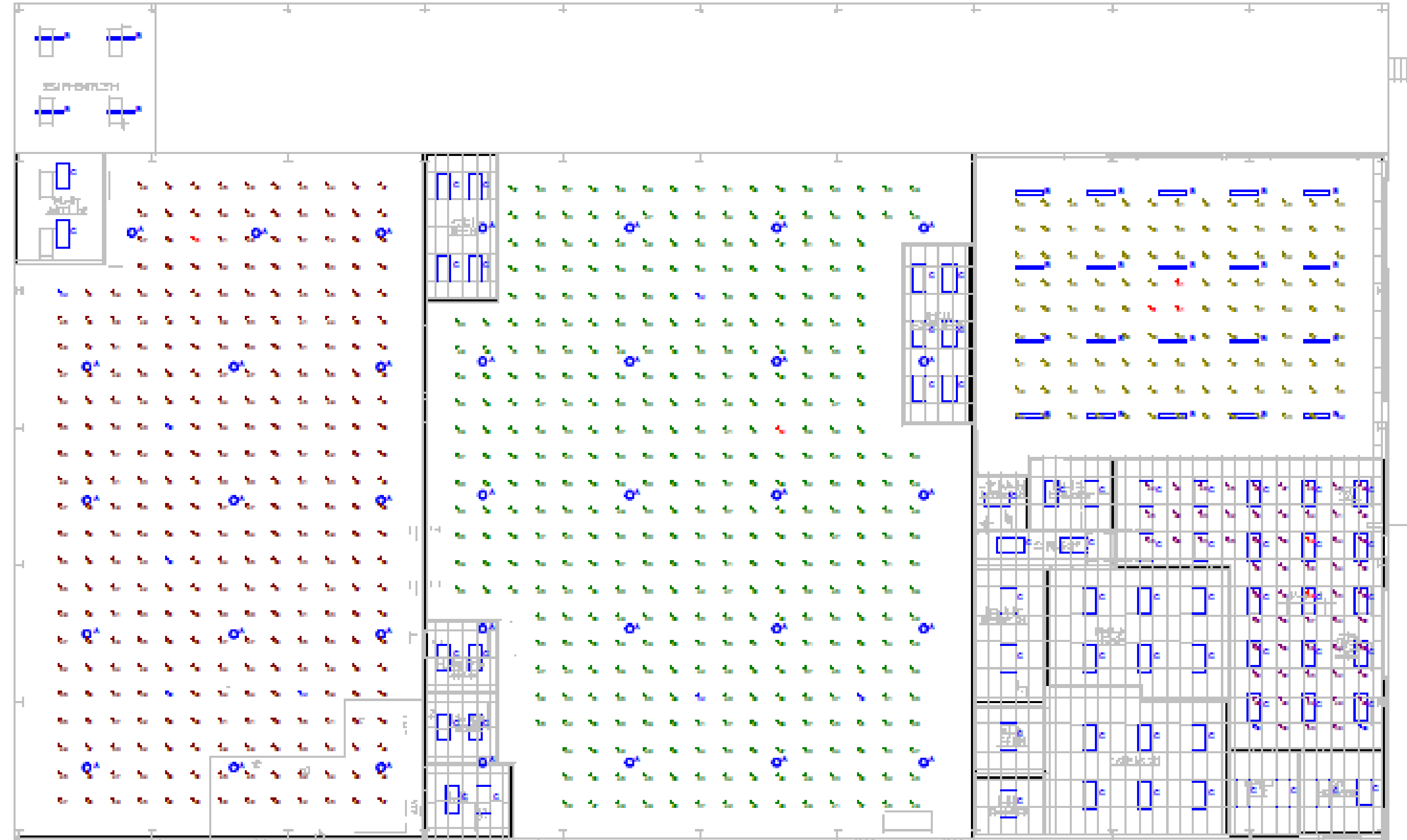


Ed Schmidt
 GMC
 LED Lighting Upgrade

Designer

LED INTERIOR DESIGNS





TALKER, T. J. L. INC.



AirGas
 LED Lighting

Design by
 A. Specht, LC
 Date

AIR GAS



AIR GAS



City of Findlay WWTP



Roadway Designs

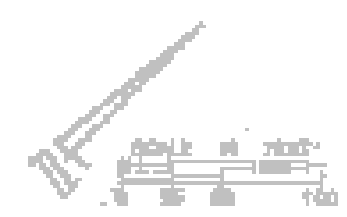
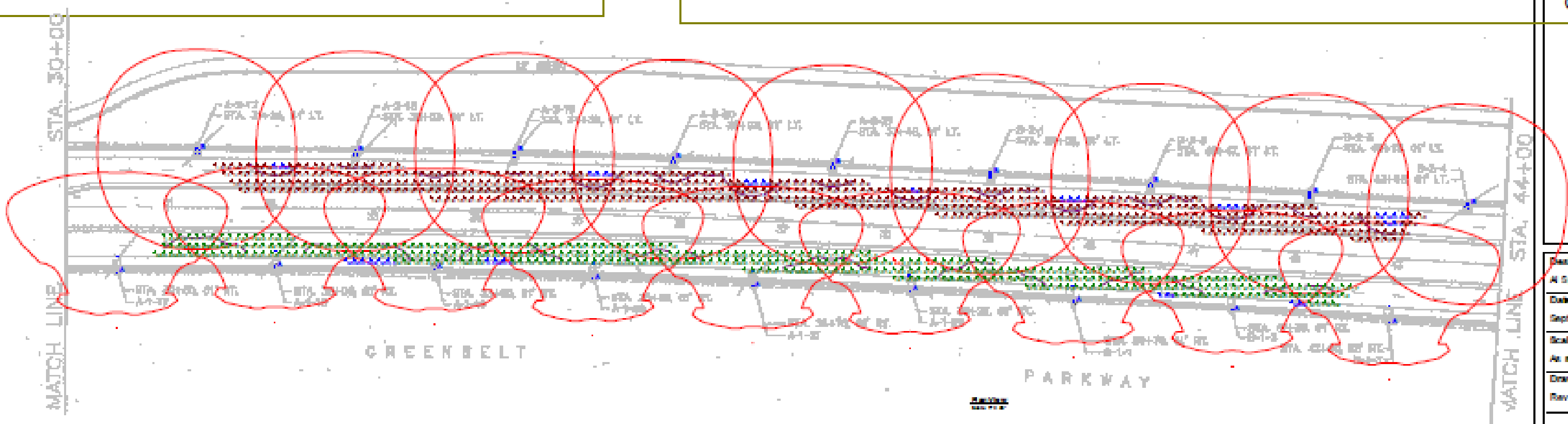
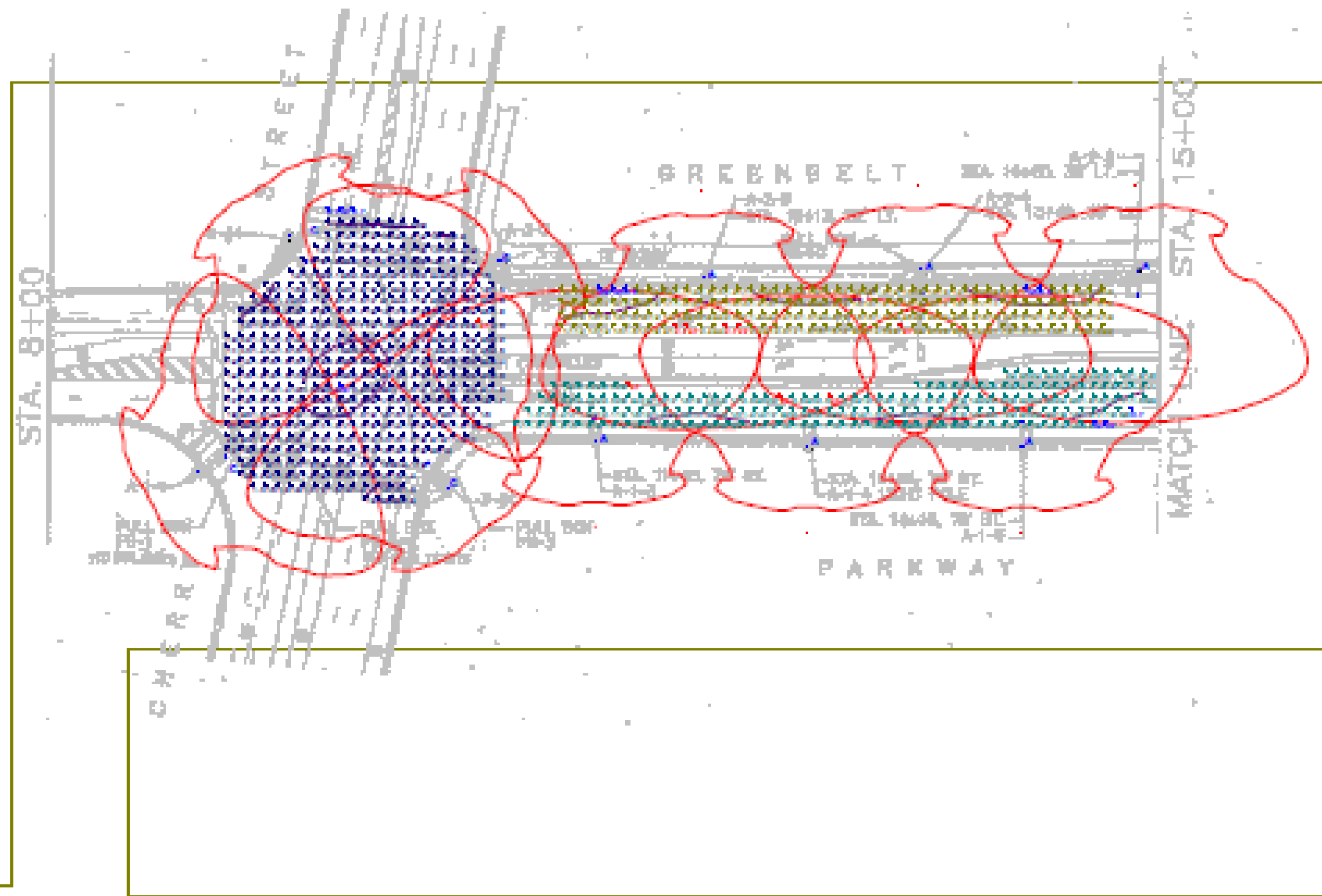


STATISTICS			
Category	Symbol	Qty	Height
Intermediate Street Light	◆	1,876	28'-0"
Street Light	▲	1,476	28'-0"
Street Light	▲	1,176	14'-0"
Street Light	▲	1,476	28'-0"
Street Light	▲	1,776	28'-0"

LUMINAIRE SCHEDULE			
Symbol	Label	Quantity	Note
◆	High Color Temp. - Economy Street Lighting (100W)	1,876	
▲	High Color Temp. - Economy Street Lighting (100W)	1,476	
▲	High Color Temp. - Economy Street Lighting (100W)	1,176	
▲	High Color Temp. - Economy Street Lighting (100W)	1,476	
▲	High Color Temp. - Economy Street Lighting (100W)	1,776	

POWER DENSITY STATISTICS		
State	# Luminaires	Total Power
Power Density (W/ft ²)	60	1000.0 W

ODOT Specification (old)
 City of Toledo Requirements
 -Public concerns



Greenbelt Parkway
 LED Site Lighting Plan
 Cree

Designer	A Specter
Date	Sept 5, 2014
Scale	As shown
Drawing No.	Rev 0117.5

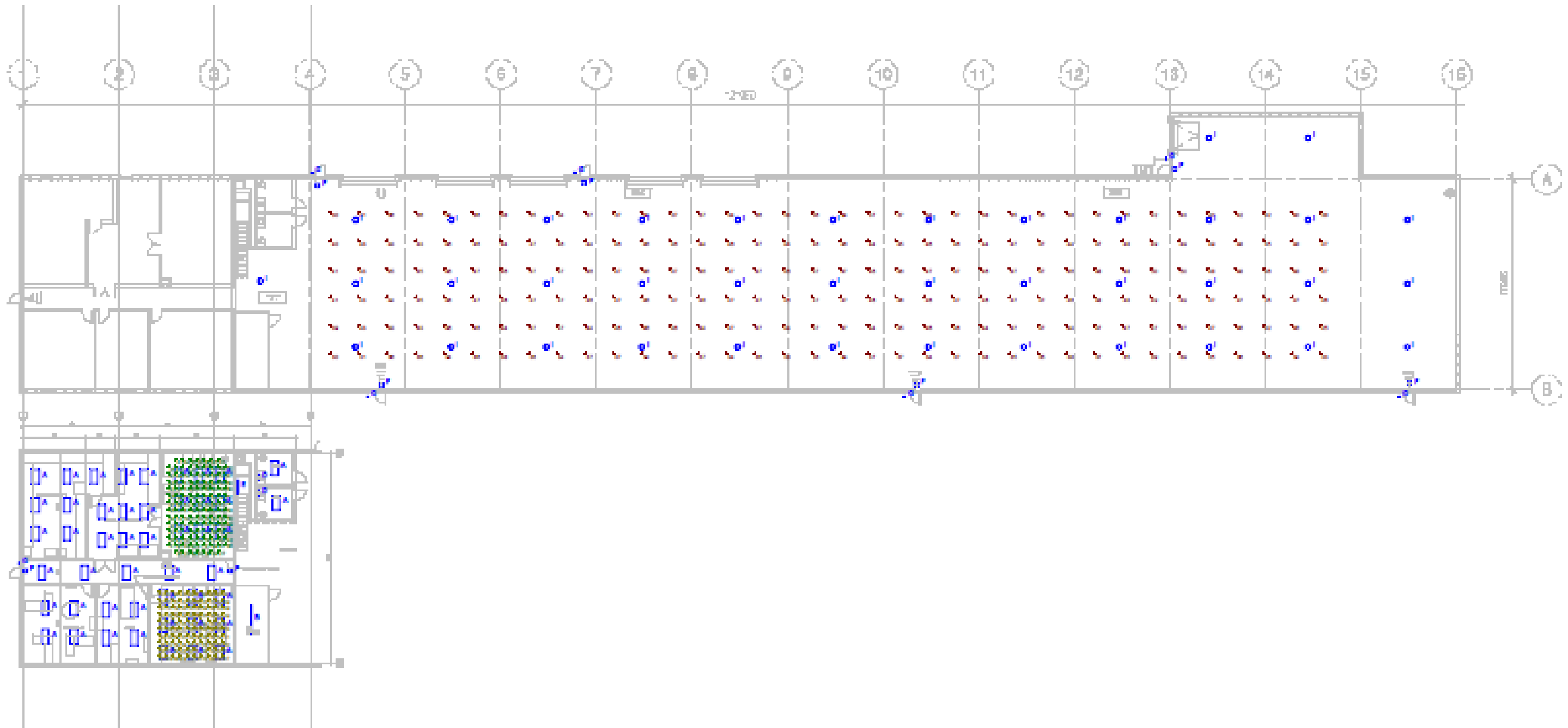
Industrial Designs





LUMINAIRE SCHEDULE					
Symbol	Label	Qty	Catalog Number	ULP	Notes
□	A	44	220044-001-000	0.26	14
	B	1	12000100-000	0.26	17
	C	1	12000100-000	0.26	17.1
	D	2	12000100-000	0.26	17
□	F	8	850	1.00	1
□	G	7	850	1.00	18
○	I	14	220044-001-000	0.26	14.1

STATISTICS						
Description	Symbol	Avg	Min	Max	Quantity	Length
Recessed Can	↑	42%	0%	42%	1,411	1,211
Can	+	51%	0%	51%	2,401	2,011
Recessed	↑	43%	0%	43%	1,711	1,411



Plan View
11/21/17



Iron Works
Warehouse
LED Lighting

Designer:
Al Specht
Date:
Nov 21 2017
Scale:
As Shown
Drawing No.

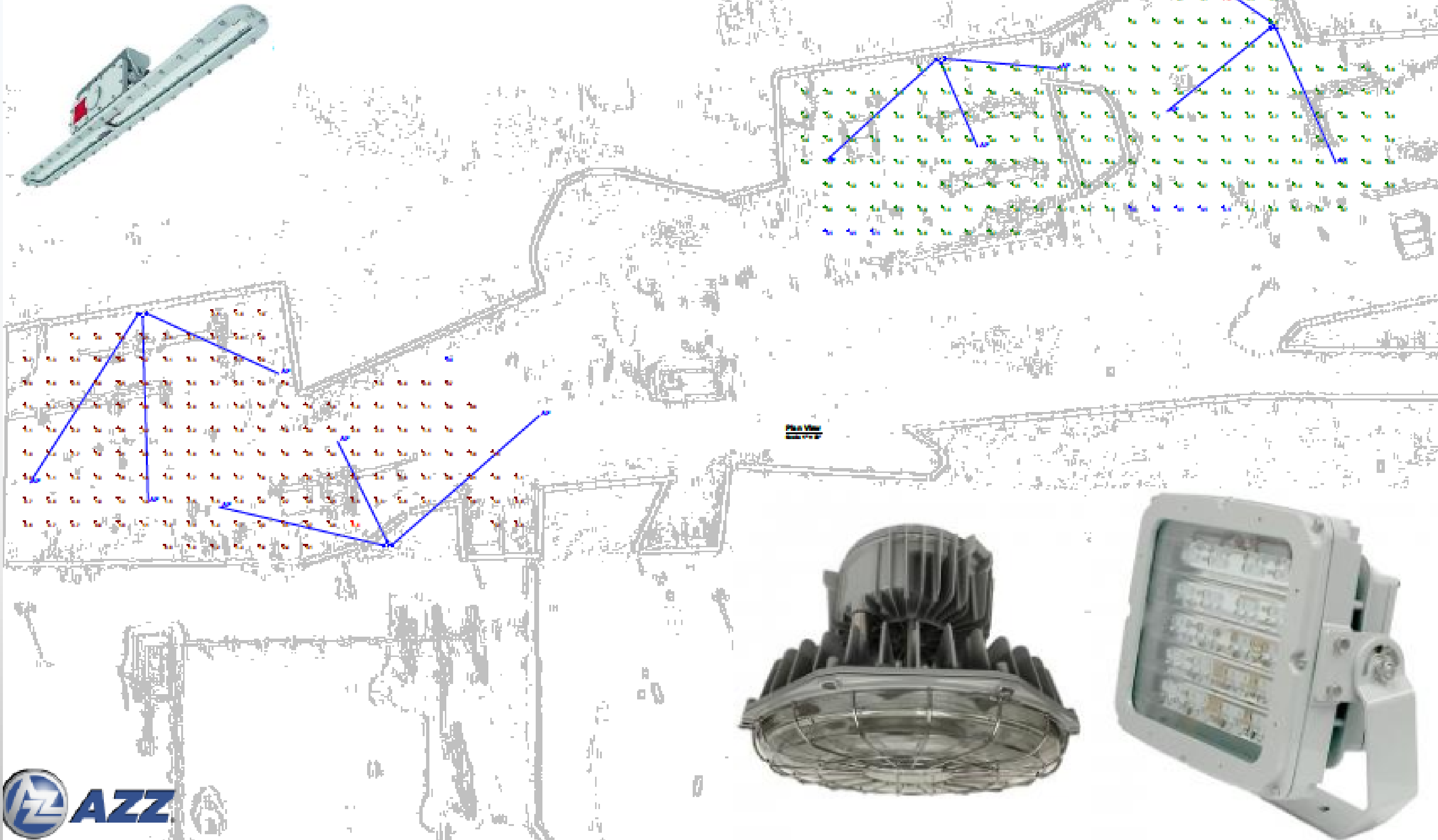


ETP Eastern Pipeline

LUMINAIRE SCHEDULE						
Symbol	Label	Qty	Order Number	Quantity	Lot #	Watts
	LP	4	PL1000000	PL1000000	LED	600 300

STATISTICS						
Quantity	Symbol	Avg	Min	Max	MaxMin	AvgMin
4	+	2.2%	0.0%	6.0%	10.2%	4.4%
4	+	2.2%	0.0%	6.0%	11.0%	4.4%

NOTES
1. 30' mounting height





Panhandle Eastern Pipeline
LEP Upgrade

Designer
A Specht

Date
Aug 2016

Scale
As shown 24x36

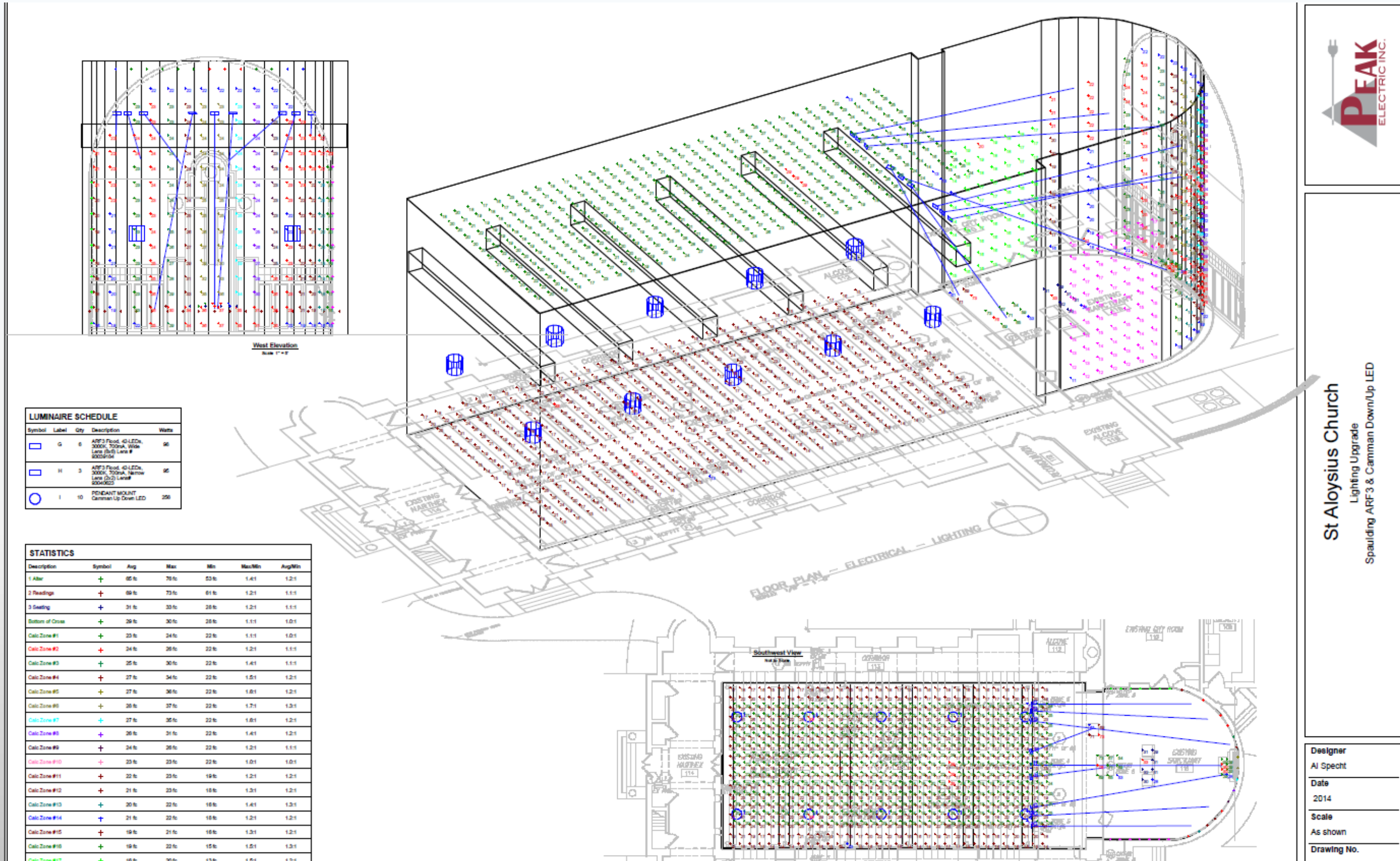
Drawing No.

1 of 1

Specialty Designs



Specialty Designs



St Aloysius Church
Lighting Upgrade
Spaulding ARF3 & Camman Down/Up LED

Designer
AI Specht

Date
2014

Scale
As shown

Drawing No.
E-1003-14

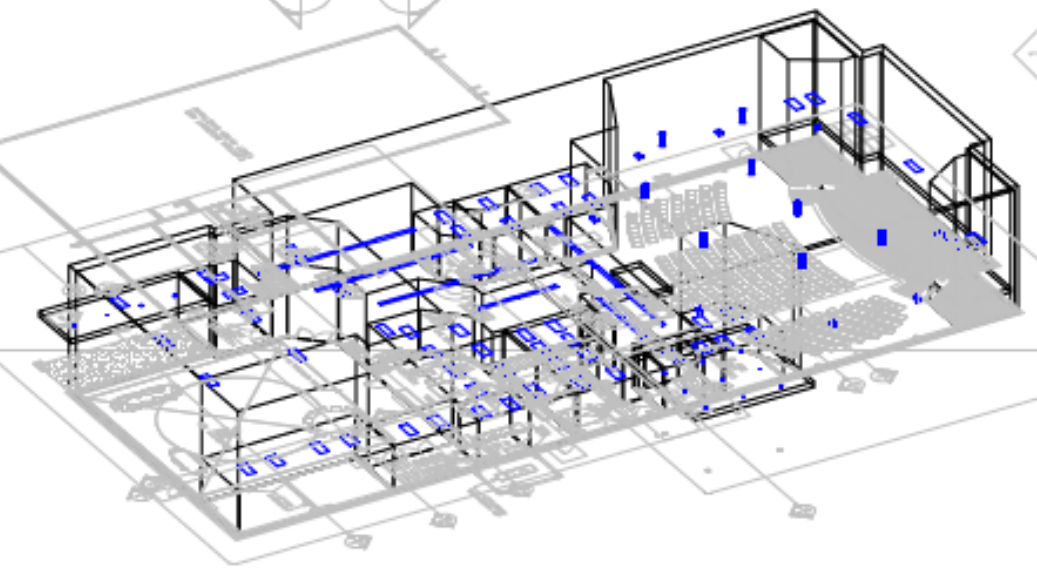


Camman uplighting 8000 lumens Cree Chips



BGCMA CHURCH
LE Electric / PEAK Electric
LED Lighting

Designer
AI Specht, LC
Date
Dec 2 2015
Scale
As Shown 24x36
Drawing No.
Rev 010816



LUMINAIRE SCHEDULE

Symbol	Label	Qty	Catalog Number	LLF	Watts
⊙	A	8	P95-20-1201 (12x40 L)	0.90	90
□	B	8	W015-16LN (2100 L)	0.90	21
□	D	16	LCAT24-350W-EDU	0.90	24
□	E	12	LCAT24-350W-EDU	0.90	30
□	F	8	LCAT24-350W-EDU	0.90	30
□	G	8	LCAT24-350W-EDU	0.90	40
□	H	11	LLA14-350W-HST-EDU	0.90	150
—	I	21	C018-44L-05K	0.90	41
⊙	J	13	LPM6L-40K-00V-A-C0-100	0.90	30

STATISTICS

Description	Symbol	Avg	Max	Min	Max/Min	Avg/Min
Canopy Area	+	17fc	21fc	0 ft	1.81	1.81
Community Rm	+	48fc	65fc	30 ft	1.91	1.61
Entrance Area	+	46fc	65fc	30 ft	2.51	1.81
Hall	+	80fc	140fc	50 ft	2.61	1.61
Kitchen 30	+	55fc	67fc	30 ft	2.01	1.71
Narthex	+	41fc	51fc	19 ft	2.71	2.21
Office 13	+	48fc	53fc	40 ft	1.31	1.11
Ramp	+	16fc	19fc	11 ft	1.71	1.51
Side Stage	+	33fc	50fc	0 ft	3.81	2.51
Stage	+	65fc	89fc	40 ft	1.91	1.61
Women 14	+	36fc	41fc	30 ft	1.31	1.11

© 2015 Peak Electric Inc. All rights reserved. www.peakelectric.com

Benefits of Peak

“Building Success Together”

- **Complete Design Solutions** – From driveway entrances to office interiors
- **Improved Scheduling** – Streamlined processes for on-time delivery
- **Right Fixture for Every Application** – Tailored solutions for your specific needs
- **Confidence in What You’re Getting** – Transparent specifications and quality assurance
- **One Source for All Your Needs** – Simplified procurement and coordination
- **Access to the Latest LED Technology** – Cutting-edge products for efficiency and performance
- **Proven Performance** – Reliable solutions backed by decades of experience
- **Expert Support** – Guidance from LED and electrical specialists



Energy

- – Power Distribution Equipment HV, MV, and 600V below
- - Pad mount switches, transformers, cable, power quality



**THE
OKONITE
COMPANY**



Southwire®



Electrical Supplies

- Conduit – Rigid, SS Pipe, EMT, PVC, PVC-Coated
- Wire – Southwire Okonite Alan Wire
- TeleData- Wire, cabinets, connectivity
- Grounding- Harger
- Firestop – STI
- Cable Tray – Cabofil, Husky, Chalfant



Southwire®



CALPIPE INDUSTRIES™
Incorporated

 **Appleton®**




HeritagePlastics

OMNICABLE

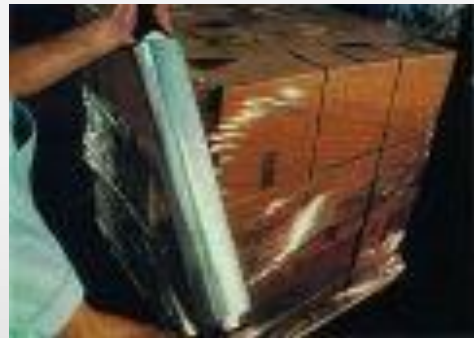
WEST PENN
WIRE Since 1971
AV, SECURITY & NETWORKING SOLUTIONS

A PART OF **atkore**
INTERNATIONAL

Electrical Tools and Fasteners



- Southwire Tools, Current Tools, I-Tools
- Hardware – Screws, nuts, bolts, mall hand tools, and bits
- Pulling rope, electrical tape, and measuring tape etc.



LENOX



BLACK & DECKER

IDEAL



STANLEY

KLEIN TOOLS



DEWALT



Partnering with Peak

- **Reliable Sourcing Capabilities** – Ability to secure the right products quickly and efficiently
- **Certifications with Benefits** – Minority Business Enterprise status adds diversity credits and compliance value
- **Owner-Level Commitment** – Focus, attention, and accountability from leadership
- **Collaborative Partnership Approach** – Enhances efficiency and reduces risk through teamwork
- **Proven Jobsite Experience** – Hands-on expertise for smooth integration and execution
- **Long-Term Relationship Focus** – Building partnerships that extend beyond a single project

