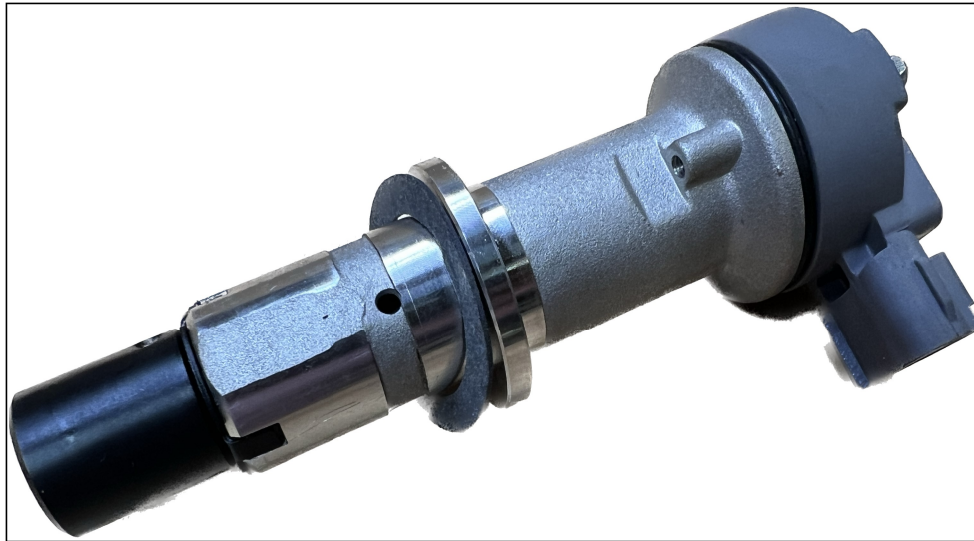




L-Series Jeep Camshaft Position Sensor Shaft Installation Manual



Index:

1. Disclaimer
2. Parts List
3. Installation Guide

Disclaimer

A vehicle modified with MilkFab Engineering products is intended for off road use only. It is the purchaser's responsibility to check and comply with all local, state, and federal laws prior to operating vehicle. Installation and use of performance products may also affect and void warranty. MilkFab Engineering shall not be liable for direct, indirect, incidental, or consequential damage to persons or property that might be claimed as a result from installation, improper installation, and failure of part including claims for delay, loss of profit, or labor.

Parts List

Parts Included

Quantity	Description
1	MilkFab Jeep L-series CPS Shaft
1	Milkfab Shaft Alignment Collar
1	Slotted Spring Pin 7/8" long 1/8" diameter

Additional Parts Needed

Quantity	Description
1	Dorman Jeep Camshaft Synchronizer PN: 689-200
1	A 1999-2004 Jeep Grand Cherokee Cam Synchronizer Plug
1	Crank Angle Sensor Setup
1	Camshaft Position Sensor Hold down

Installation Guide

WARNING! Extreme caution should be taken when performing ANY maintenance or performance upgrades to your vehicle. Please observe and abide by any Warning or Caution labels placed on the various components and tools used when servicing your vehicle. If you have any questions regarding the installation or the various components included, consult with a Professional Mechanic or contact MilkFab Engineering for more information.

Disassembly:

****BEFORE YOU BEGIN!****

Remove all contents from the Milkfab L-Series Cam Position Sensor Shaft/Collar (DIY) kit and verify that ALL necessary hardware is present.

1. First, loosen and remove the Camshaft Synchronizer Cover.



2. Remove the roll pin connecting the shaft and drive gear on the Jeep CSS.



3. Remove the Jeep drive gear by sliding it down the shaft.



4. Remove and place the gear/collar wear plate to the side (This will be reused).



5. Pull Jeep shaft from the body.



6. Remove thrust assembly and spacing washer from the Jeep Shaft/Body and place to the side (This will be reused)



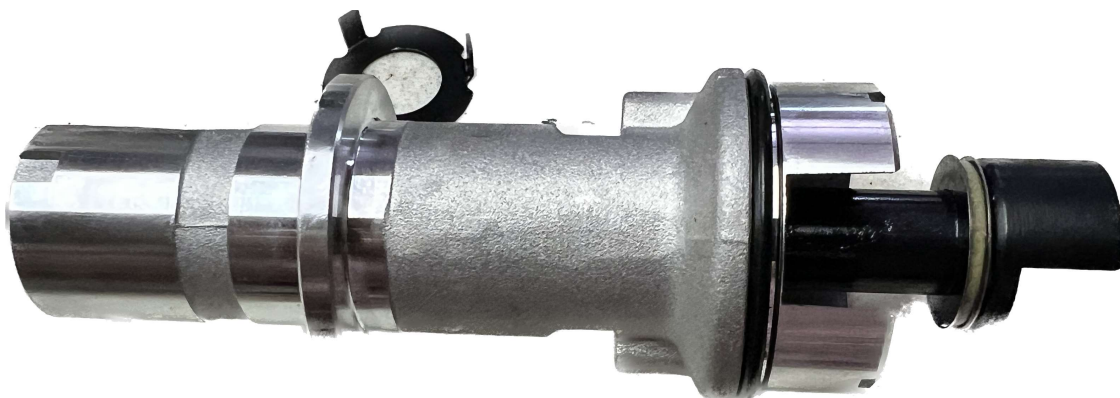
7. Discard the Jeep shaft and the spacing washer, these parts wont be used.

Installation:

8. Locate and lubricate the Milkfab CPS Shaft, it is suggested to use a sparing amount of high temperature grease to lubricate the shaft.
9. Place the thrust assembly onto the Milkfab shaft. DO NOT ADD THE SPACING WASHER with the assembly.



10. Insert the Milkfab shaft with the thrust assembly attached into the CSS body.



11. Place the gear/collar wear plate back onto the end of the CSS body.



12. Install the Shaft Alignment Collar onto the end of the shaft with the side closest to the cross drilled hole towards the collar wear plate.



13. Locate and install the Spring rolled pin into the cross drilled hole in the alignment collar making sure to align the cross drilled holes in the collar and shaft.



14. Re-attach the Camshaft Synchronizer Cover to the body

15. Install into distributor hole on the cam cover.

16. Enjoy!