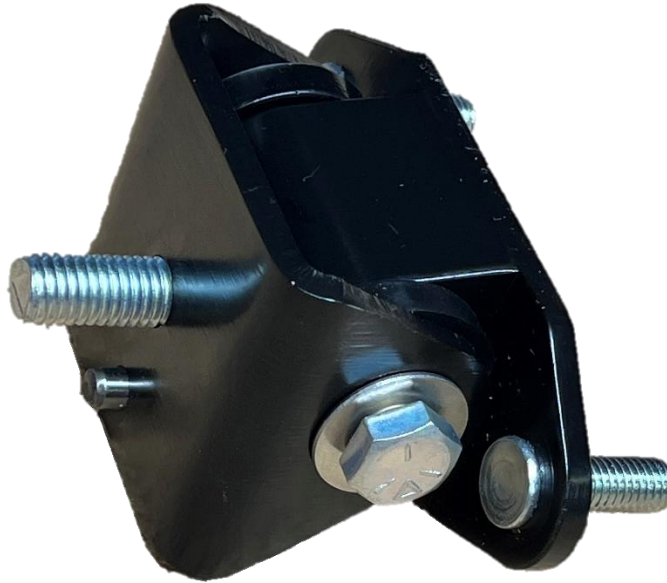




L24/L26/L28 Polyurethane Motor Mount Installation Manual



Index:

1. Disclaimer
2. Parts List
3. Installation Guide

Disclaimer

A vehicle modified with MilkFab Engineering products are intended for off road use only. It is the purchaser's responsibility to check and comply with all local, state, and federal laws prior to operating vehicle. Installation and use of performance products may also affect and void warranty. MilkFab Engineering shall not be liable for direct, indirect, incidental, or consequential damage to persons or property that might be claimed as a result from installation, improper installation, and failure of part including claims for delay, loss of profit, or labor.

Parts List

Parts Included

Quantity	Description
2	L24/L26/L28 Motor Mount
1	3/8"-16x3.25" Hex Cap Bolt
2	3/8" Stainless Flat Washer
1	3/8"-16 Nyloc Nut
1	M10 x1.5mm Grade 10 Hex Nut
1	M10 Split Lock Washer
2	M8 Split Lock Washer
2	M8 Flat Washer

Installation Guide

WARNING! Extreme caution should be taken when performing ANY maintenance or performance upgrades to your vehicle. Please observe and abide by any Warning or Caution labels placed on the various components and tools used when servicing your vehicle. If you have any questions regarding the installation or the various components included with the L-6 Poly Motor Mount Kit, consult with a Professional Mechanic or contact MilkFab Engineering for more information.

Disassembly:

****BEFORE YOU BEGIN!****

Remove all contents from the MilkFab L24/L26/L28 Polyurethane Motor Mount Kit and verify that ALL necessary hardware is present.

1. Raise the vehicle's hood.
2. Locate the factory engine mounts, remove the single M10 nut that holds the motor mount to the cross member, and remove the two M8 bolts/nuts that attach the motor mounts to the engine stand offs.
3. Raise the engine to remove the factory style motor mounts, discarding the motor mount and the fore/aft limiting plate. This can be accomplished with an engine hoist or by jacking the engine from below. **(NOTE: if jacking engine from below do not place jack directly on the oil pan. Place something between jack and oil pan to distribute the engine weight to avoid damaging the oil pan)**
4. Make sure the 3/8"-16x3.25" Hex Cap Bolt, 3/8" Stainless Flat Washers, and 3/8"-16 Nyloc Nut is installed loose between the two halves of the engine mounts to allow the two halves of the mount to rotate freely.
5. Insert the Milkfab engine mounts into the cross member and align the locating dowel into its respective locating hole in the cross member.

6. Install the M10 lock washer onto the M10 Motor mount stud followed by the M10x1.5 Hex Nut. Finger tighten the M10 Hex Nut to secure the motor mounts to the cross member. Complete for both sides. **(DO NOT Torque the mounting nuts until after the engine has been aligned and lowered into place onto the upper portion of the motor mount)**
7. Lower the engine assembly and guide the two M8 studs into the corresponding holes on the engine stand-offs. This may be a difficult task and may require help to guide the engine/mount halves while lowering the engine.
8. Once the engine is resting on the Milkfab Motor Mounts, install the following in order: M8 Flat Washers, M8 Split Lock washers, and M8x1.25 Hex Nuts onto the motor mount to engine stand-off studs. Tighten M8 Hex Nuts to 18-24 ft-lb.
9. Torque the M10 Hex Nut on the lower portion of the motor mount to 30-35 ft-lb.
10. Enjoy a drive with your new polyurethane motor mounts!