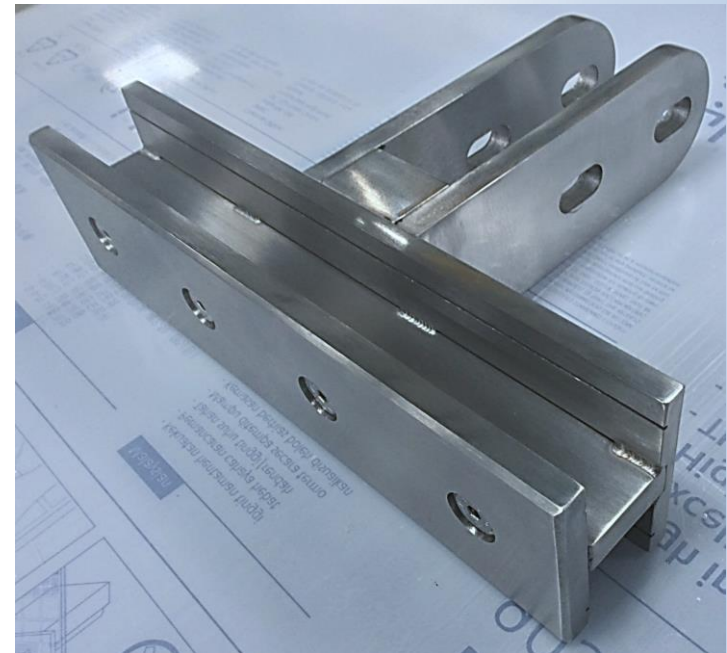
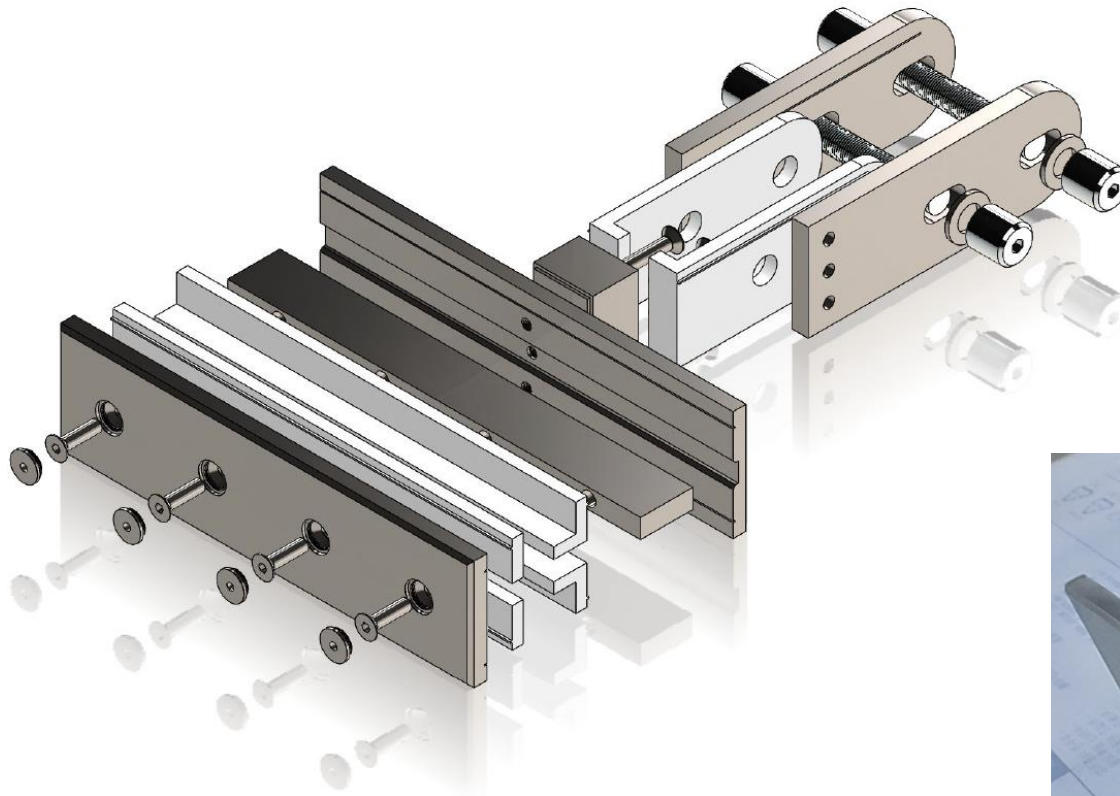


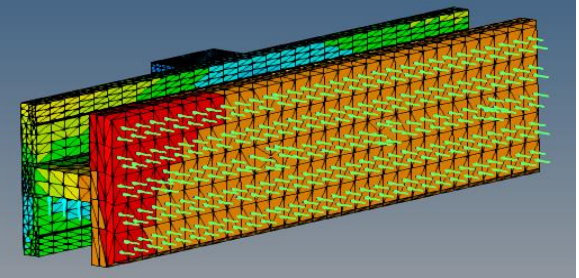
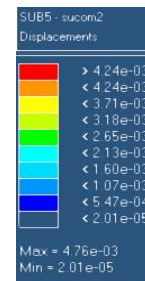
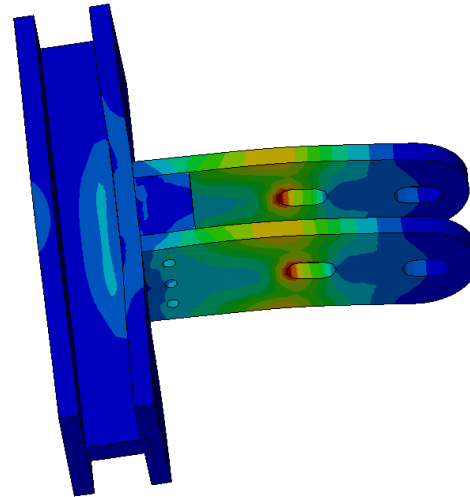
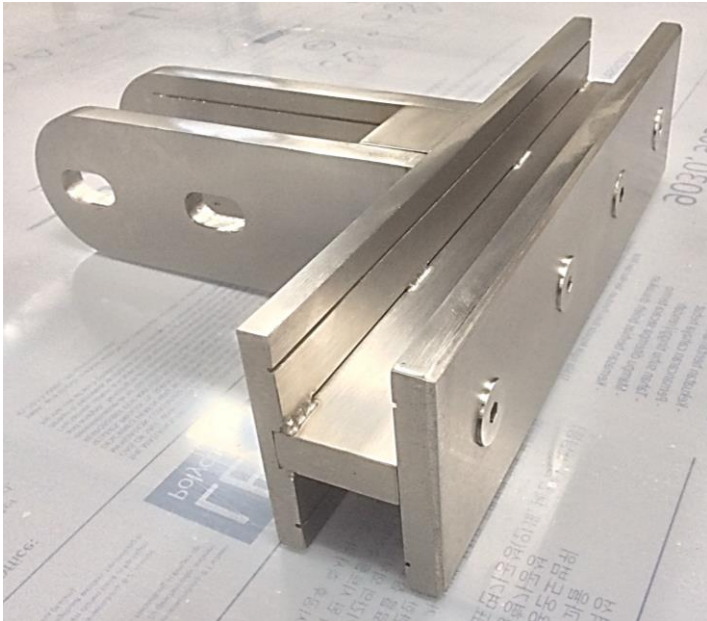
CRAFTED ENGINEERING

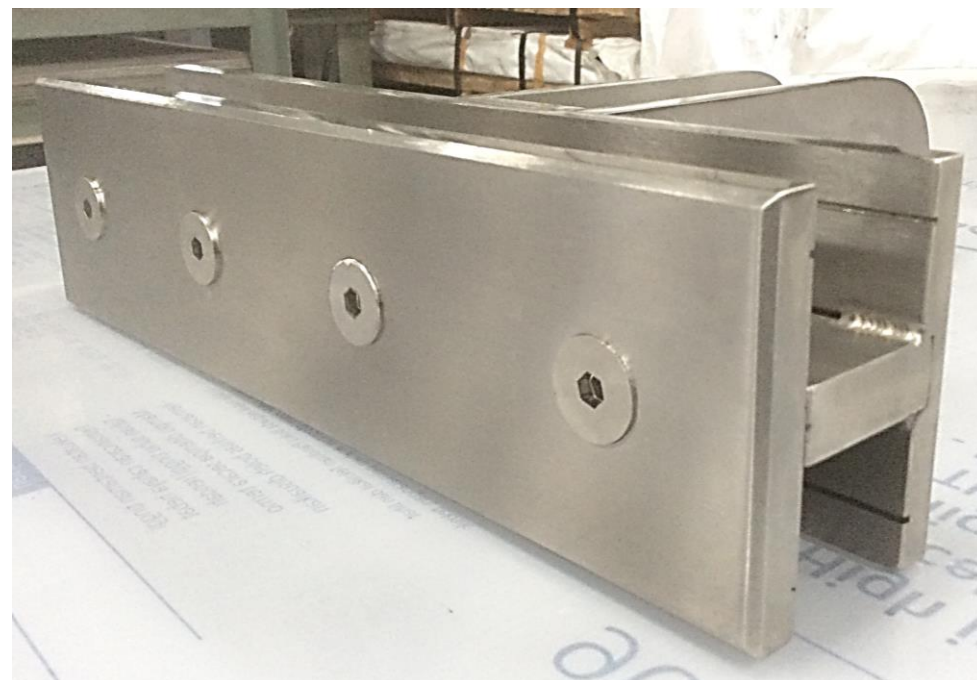
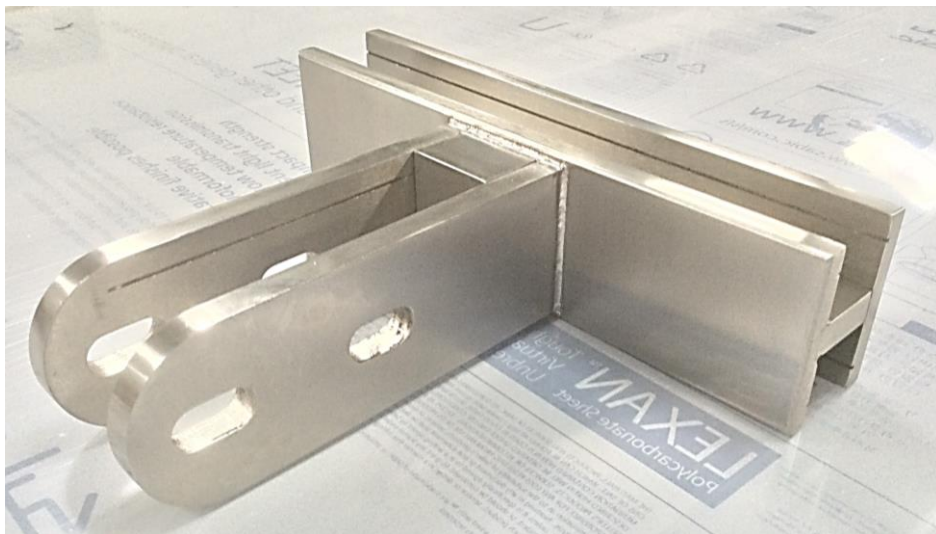
BESPOKE SS 316  
MACHINED CLAMPS



**PROJECT SPECIFIC ENGINEERED PRODUCT**

- LEAN JUST IN TIME INVENTORY
- NO CASTING LIMITATION
- MACHINE FINISHED
- DESIGN & PERFORMANCE FLEXIBILITY
- OPTIMIZED TO PROJECT SPECIFIC LOAD COMBINATION
- EMPIRICAL PROOF OF DESTRUCTIVE TESTING







## HIGH PERFORMAMNCE GASKET ASSEMBLY

- 3D PRINTED TPU OR SALT BATH / MICRO WAVE CURED EXTRUDED
- GLASS BUILD THICKNESS FLEXIBILITY
- SILICON COMPATIBLE
- CUSTOMIZED SHORE HARDNESS AS REQUIRED
- TONGUE & GROOVE / DOVE TAIL ASSEMBLY

