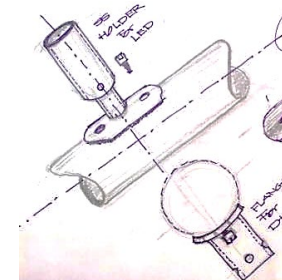
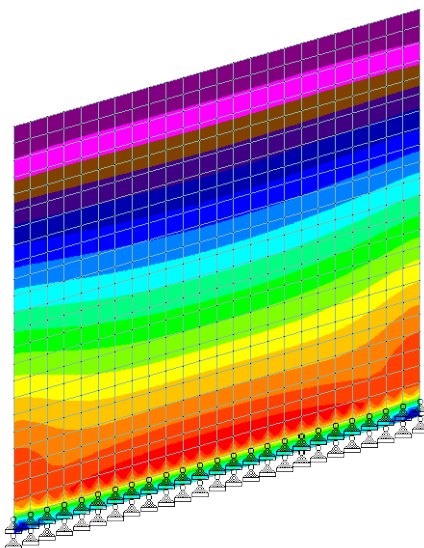
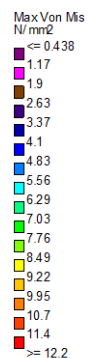
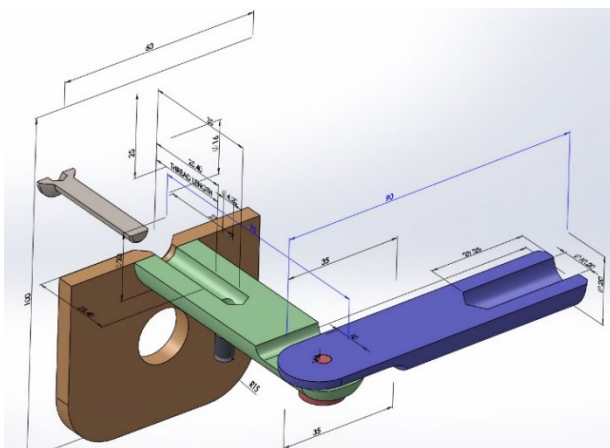




CRAFTED FEATURE STAIRCASES

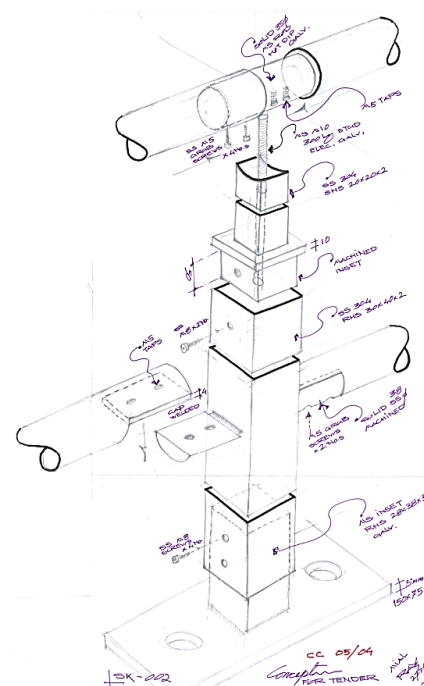


## Le Corbusier

“...the **details** and the whole are one...”

**Portfolio :**

## FEATURE STAIRCASES







DESIGN ANALYSIS CODES AS PER ASTM / BIS

ANIT-SLIP PERFORMANCE IN WET CONDITIONS

POST BREAKAGE STRUCTURAL INTEGRITY

PUBLIC SPACE LOAD BEARING CAPACITY

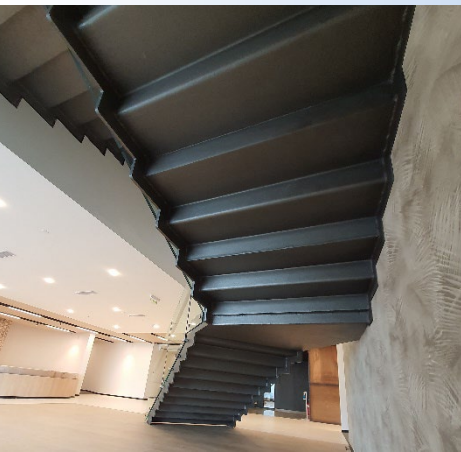
WIND PRESSURE & LINE LOADING WITH 1.5 FACTOR OF SAFETY

ENDURENCE TO LONG TERM WEATHER ELEMENTS EXPOSURE

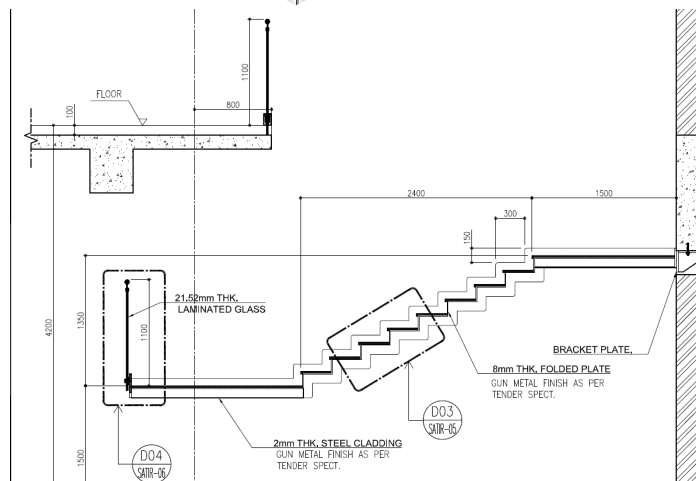
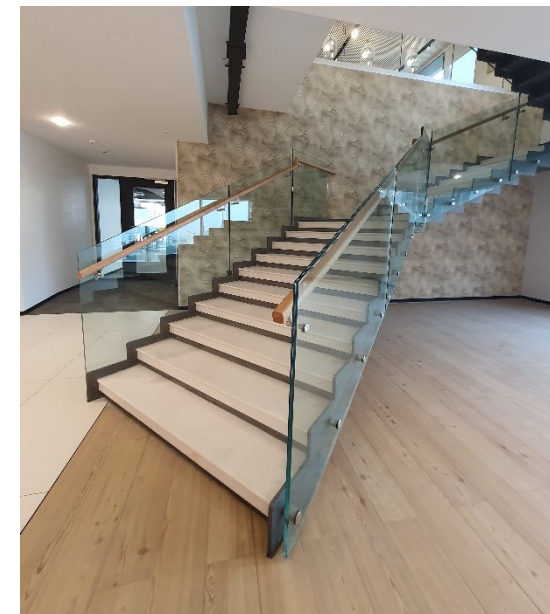
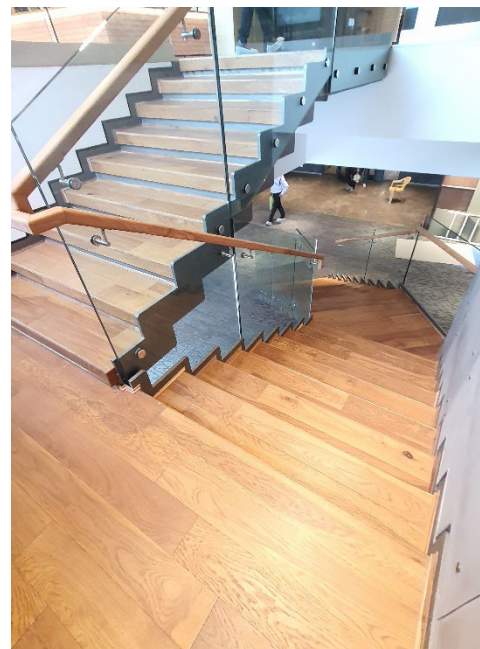
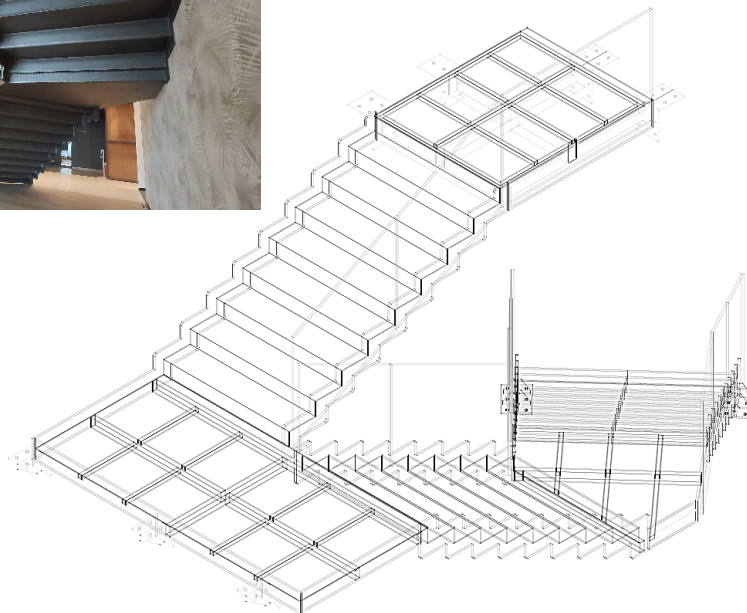
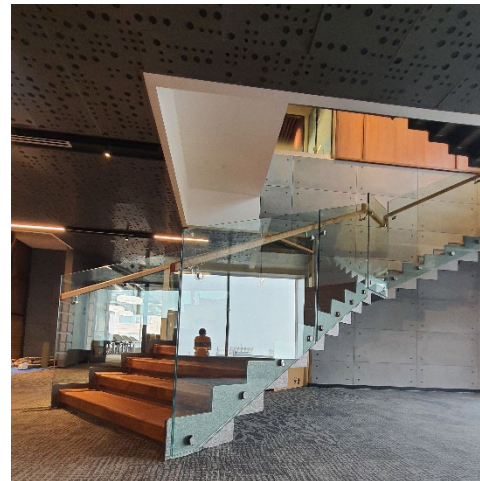
EASE OF MAINTENANCE & PANEL REPLACEMENT







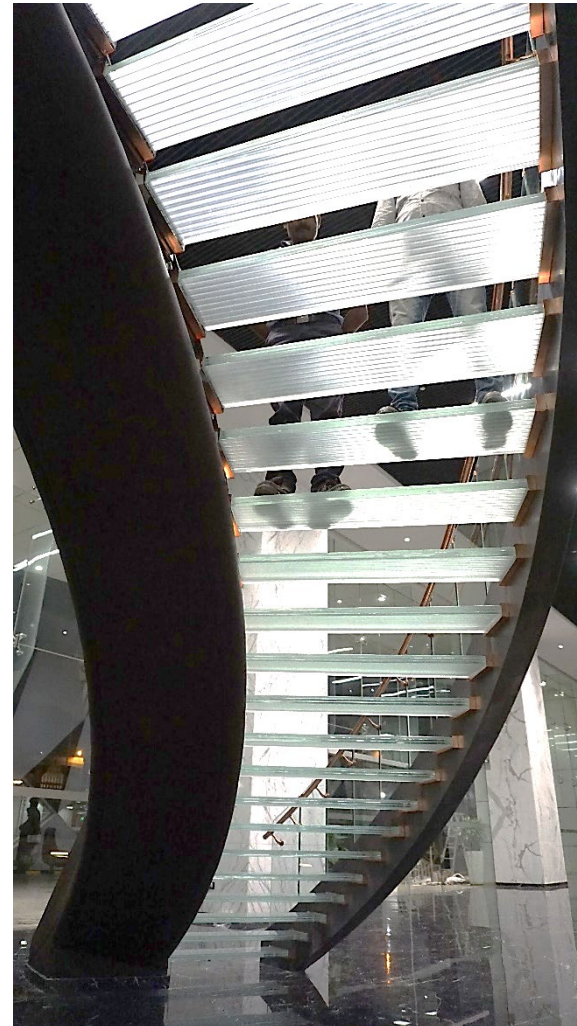
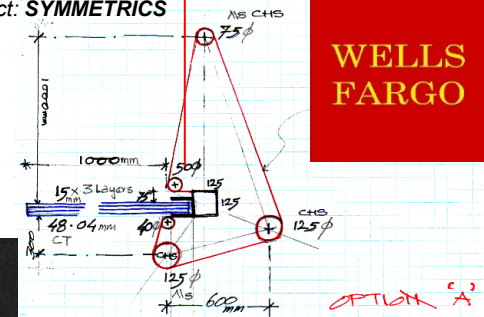
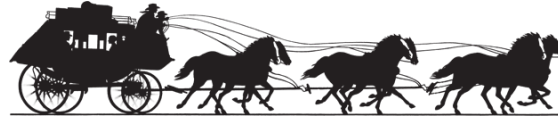
**GOOGLE GOGO.**  
Gurgaon, INDIA  
Architect: **RC Corp.**





**WELLS FARGO,**  
Bangalore, INDIA  
Architect: **SYMMETRICS**

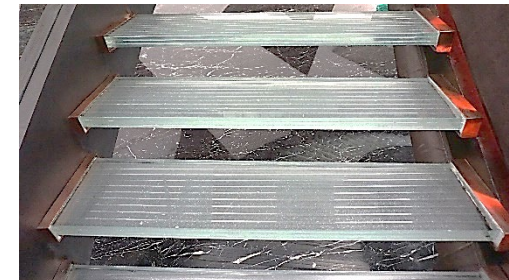
**WELLS  
FARGO**



39.04MM THICK SGP LAMINATED  
LOW IRON TEMPERED GLASS  
TREADS

CNC ANTI-SKID GROOVES

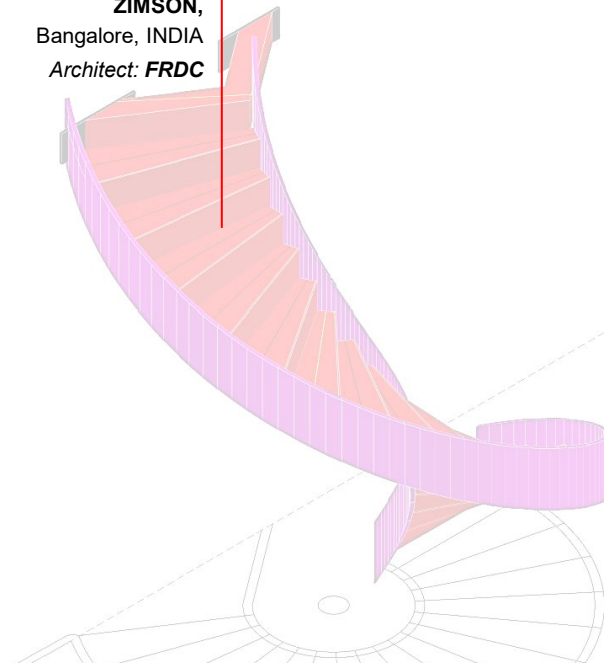
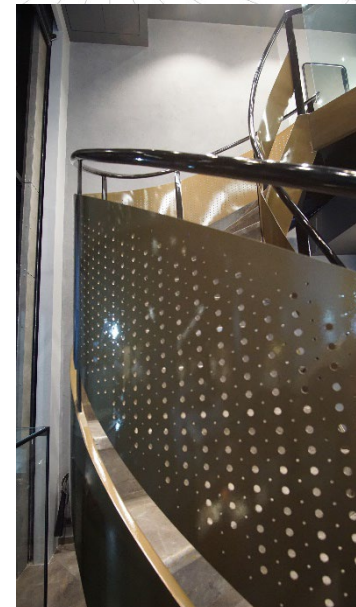
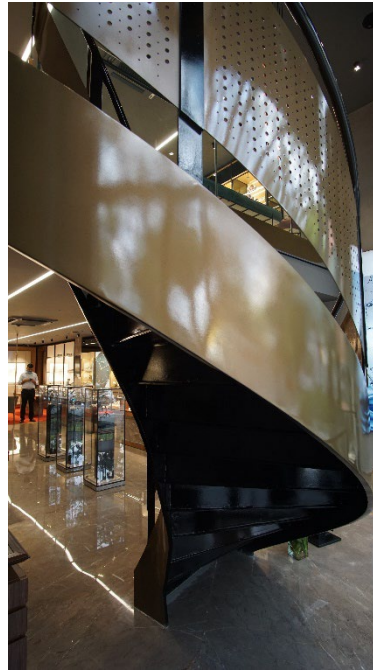
RGB LED INTEGRATED



**WWW.SRAYS.IN**

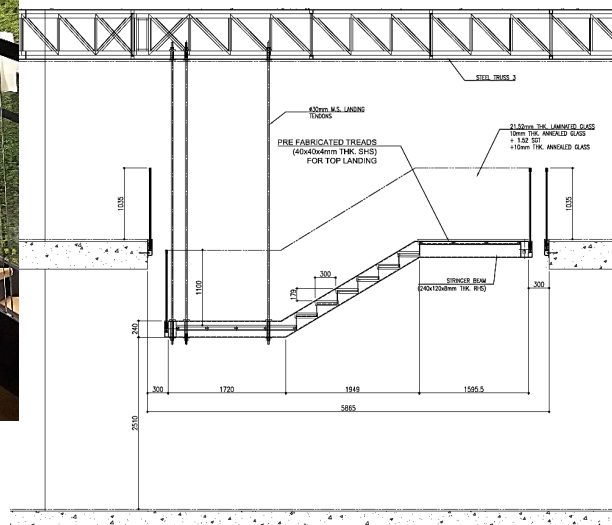
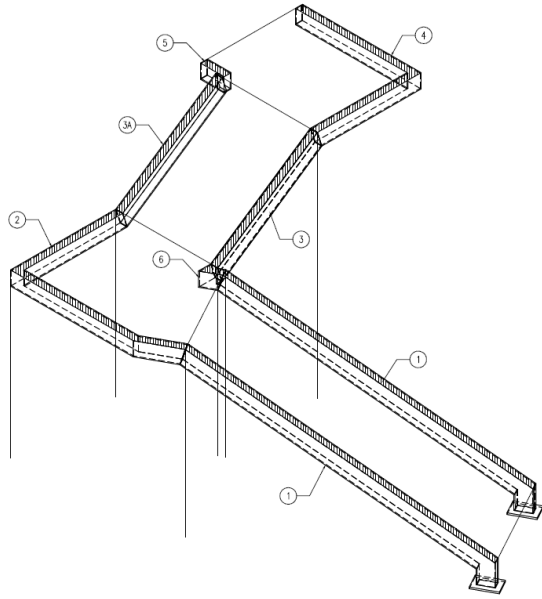


**ZIMSON,**  
Bangalore, INDIA  
Architect: **FRDC**





A modern interior space featuring a staircase with a glass railing and a large green wall. The staircase has wooden steps and a black metal frame. The green wall is made of vertical wooden slats. The ceiling has exposed ductwork and linear lighting. The floor is made of large, light-colored tiles.

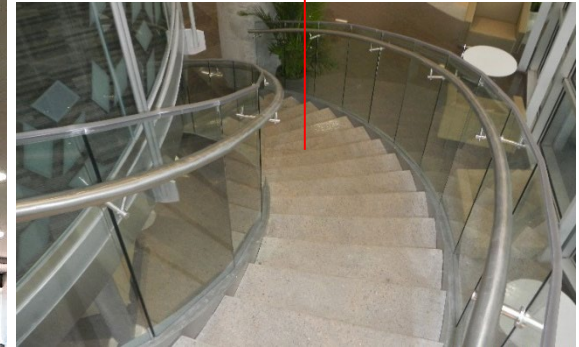
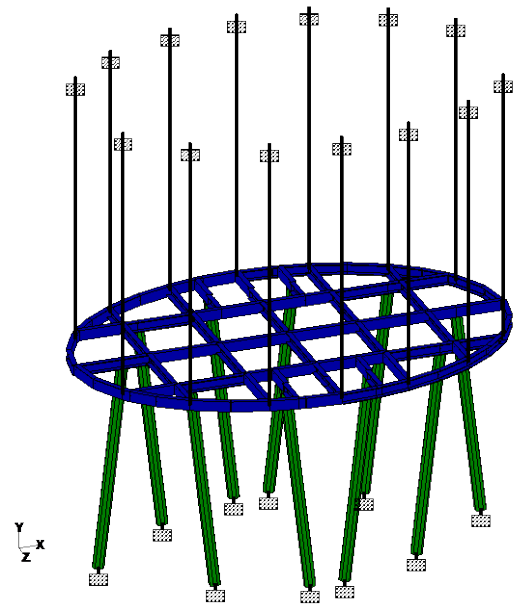




DELL RECEPTION - FEATURE 12-SEATER CONFERENCE Rm.

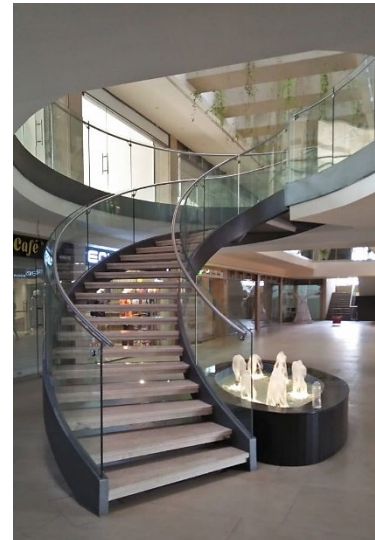
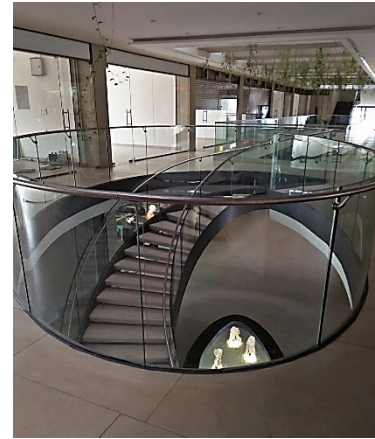
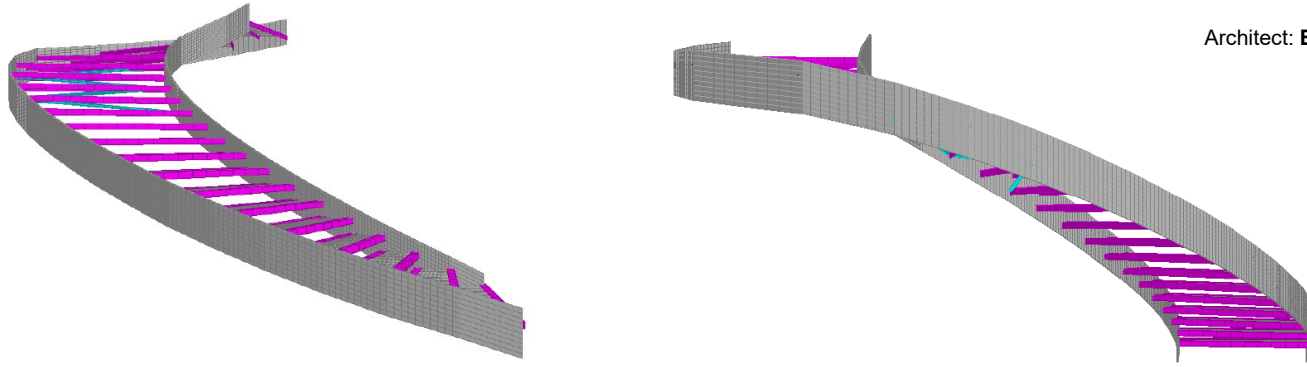
Bangalore, INDIA.

Architect: RC Architecture





Marvel Artiza Mall - FEATURE STAIRCASE  
Hubli, INDIA.  
Architect: Blocher Partners. Ahmedabad.

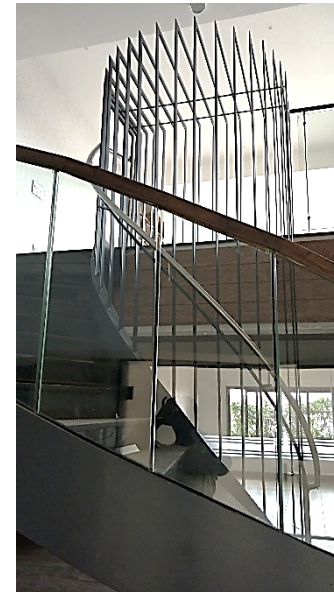
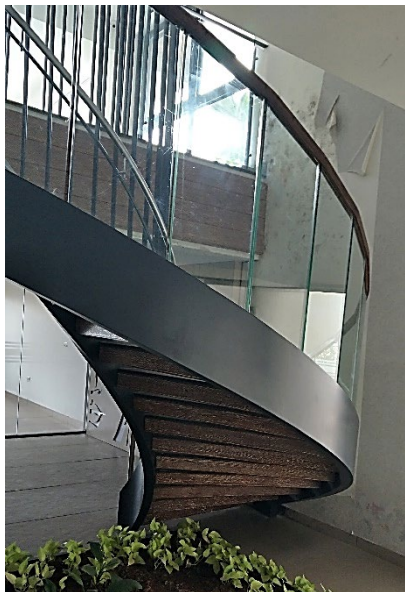
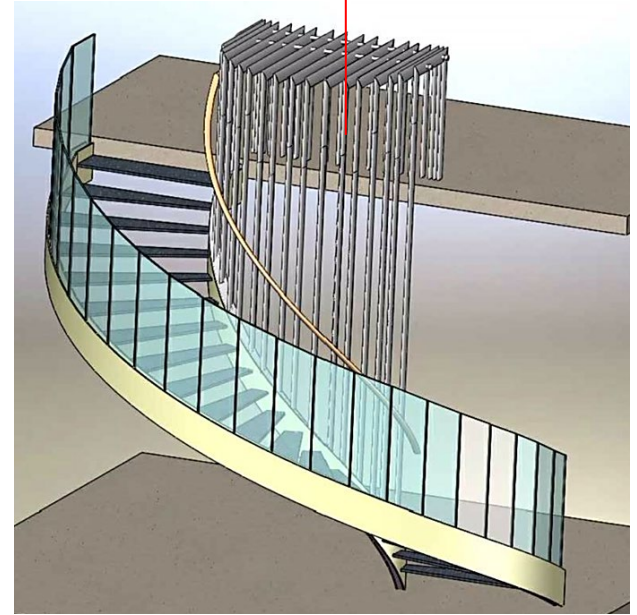




## Snn Grandeur Club House - FEATURE STAIRCASE

Bangalore, INDIA.

Architect: **Darius Billimoria**

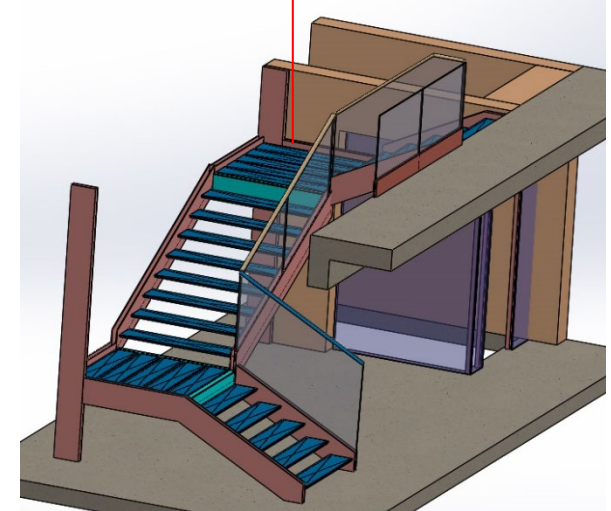
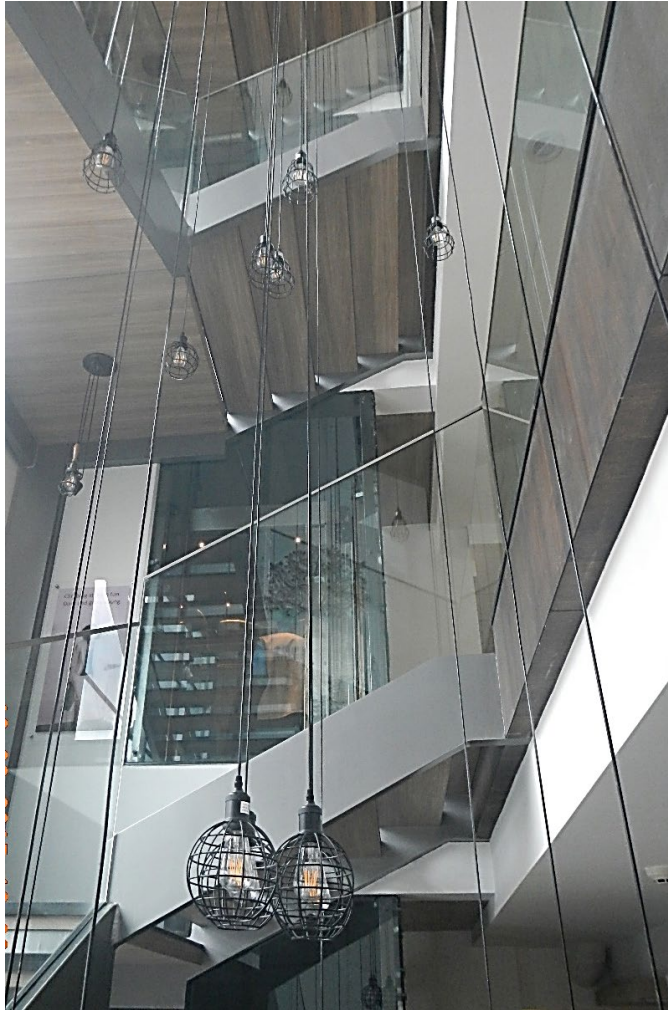




**Snn RECEPTION - FEATURE STAIRCASE.**

Bangalore, INDIA.

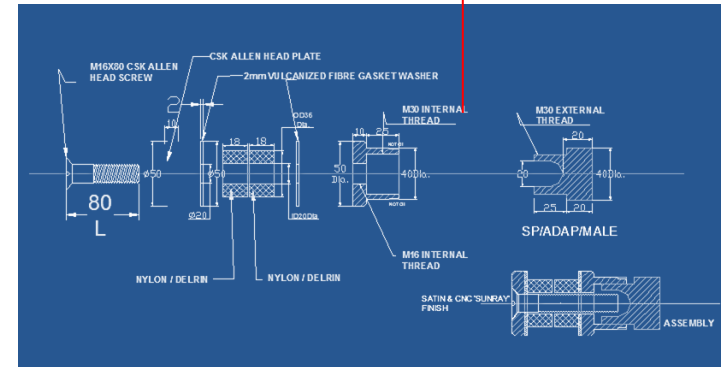
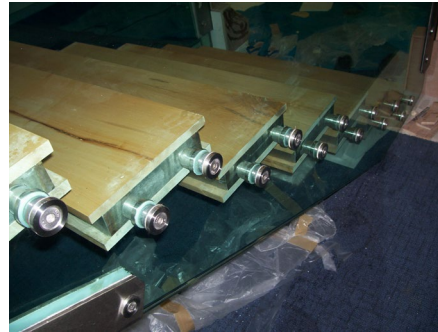
Architect: **SPACE MATRIX**



**SOLID WORKS MODEL**





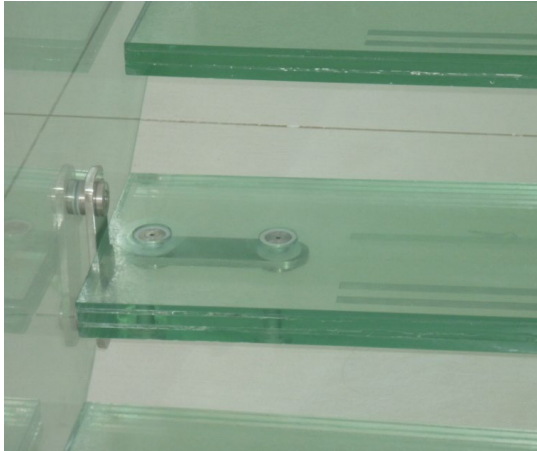


SECTION at X1

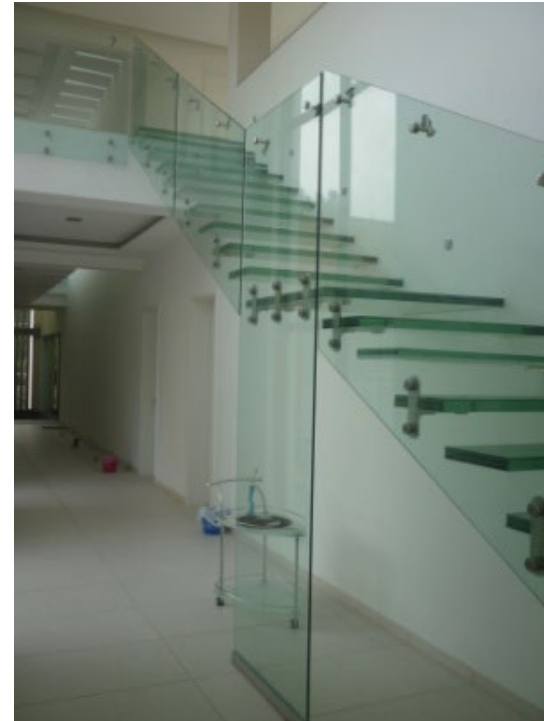
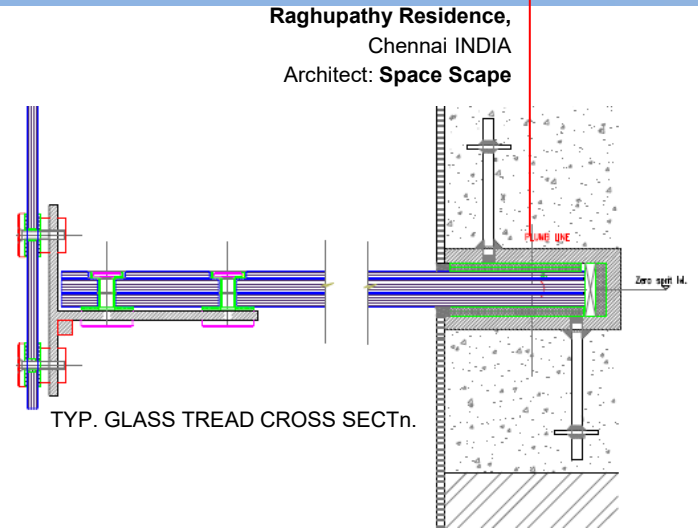
*The ceiling suspended landing is the cardinal structural support for the glass beams.*

*The treads are SS frames with solid teak wood cladding.*





(8CT+2SGP+12CT+12CT)mm; surface #1  
ANTI-SKID ACID ETCHED



## CANTILEVERED GLASS STAIRCASE

*Glass supplied by Impact  
Safety Glass Works,  
Bangalore.*



STAIRCASE, HOTEL CHANCERY

Architect: **CDE**

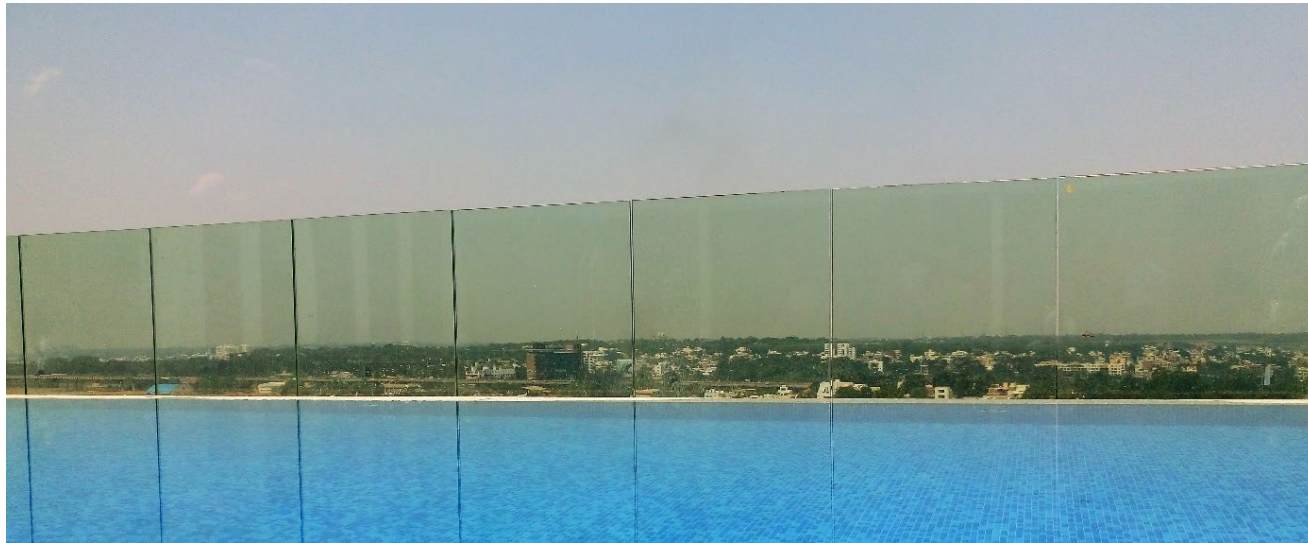


STAIRCASE,  
HOTEL CHANCERY.  
BANGALORE, **INDIA**

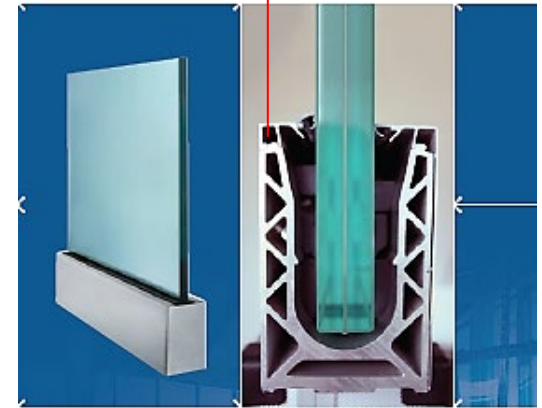




**CROWN PENTHOUSE,**  
Bangalore, INDIA  
Architect: **VINITA CHAITANYA,**

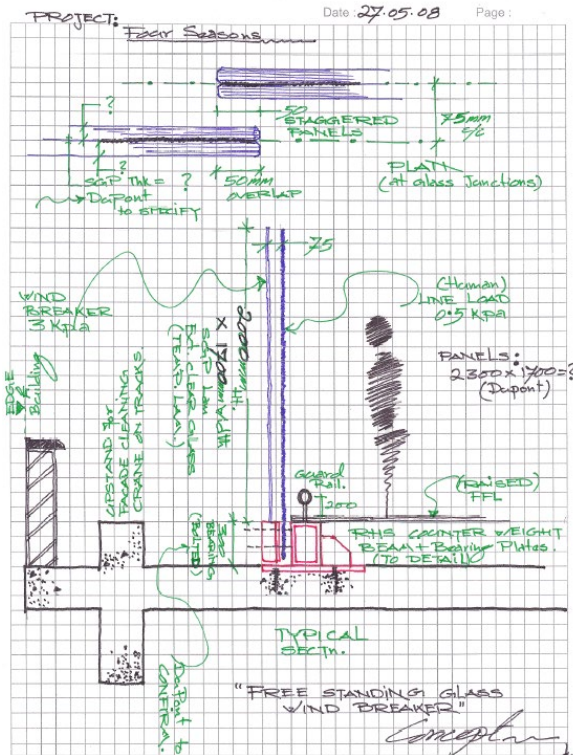


21.52MM THICK TEMPERED SGP LAMINATED PANELS

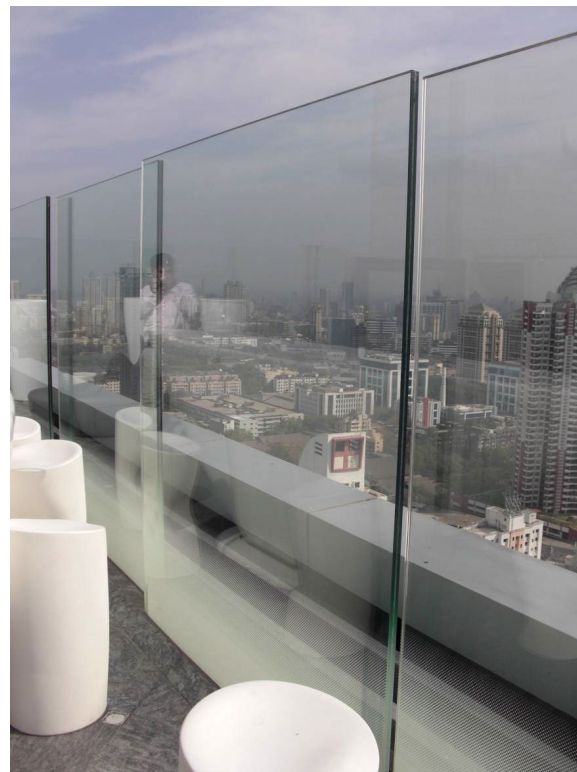


WWW.SRAYS.IN





PRELIM CONCEPT

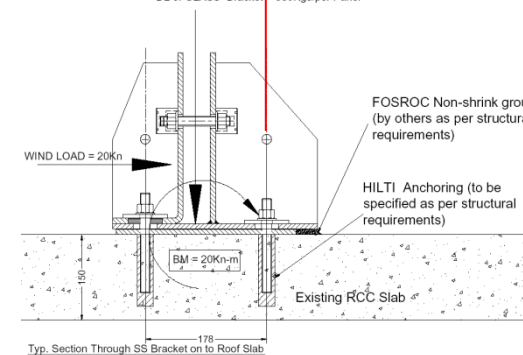


AS EXECUTED

## FOUR SEASONS HOTEL, Mumbai INDIA

Structural Consultant: **DuPont, USA.**

DL of GLASS + Bracket = 350Kgs/Per Panel



FLOOR BRACKET

### FREE STANDING WIND BREAKER on the 34<sup>th</sup> Flr.

This project was realized from the prelim sketch for the architect/client.

The glass panels are 2M Ht. X 1.7M.

Tempered laminated using DuPont's SGP ionoplast interlayer with low iron glass with the bottom edges fritted with a gradient white ceramic dots.

The glass supplier was CSG China.

The floor brackets were 316 SS custom made by Kin Long as per my design.

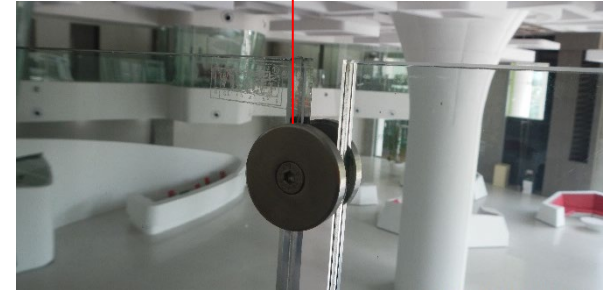
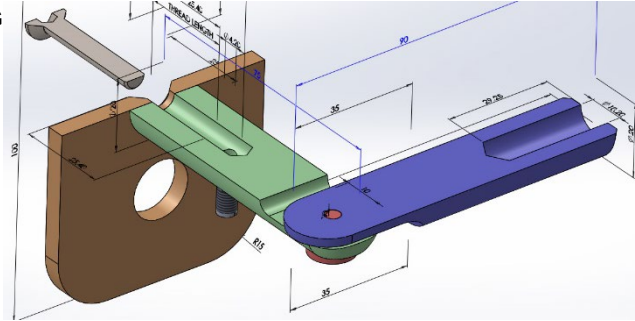
The panels are staggered in plan at 75mm C/C from the thickness centre line with a 50mm overlap to allow the high velocity sea side winds to be broken & gently pass through with an allowable glass top edge deflection of 75mm.





**BGRT KNOWLEDGE PARK,**  
Bangalore, INDIA  
Architect: **COLLABORATIVE ARCHITECTURE,**  
Mumbai

SOLID WORKS  
MODELLING



### FREE STANDING GLASS BALUSTRADE SYSTEM:

*This project was conceived as a free-flowing minimalist railing system that would evolve into suspended meeting cabins with curvilinear slanted panels.*

*SFT's role was to design, engineer & install this concept. We could achieve the architect's design intent only by developing customized hardware for this project.*

*The complex geometry of the suspended meeting rooms required not only bespoke hardware fabrication but also the hands-on knowledge of double axis (conical) curved laminated glass processing.*

AS EXECUTED



WWW.SRAYS.IN

F  
R  
E  
E  
  
S  
T  
A  
N  
D  
I  
N  
G  
  
G  
L  
A  
S  
S  
  
B  
A  
L  
U  
S  
T  
R  
A  
D  
E  
S





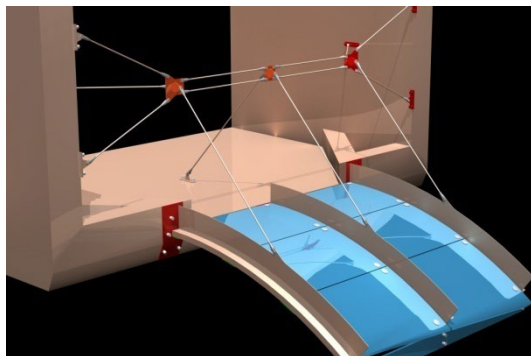
## HP-DIGITAL RECEPTION - FEATURE STAIRCASE

Bangalore, INDIA.

Architect: **RC Architecture**





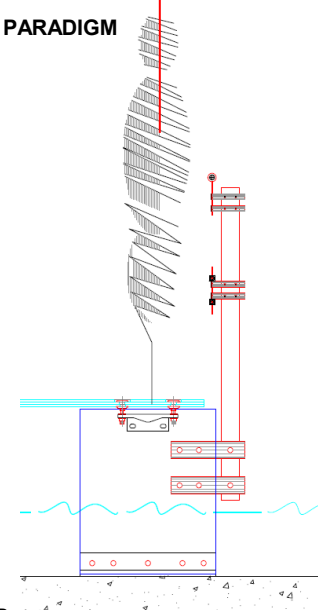


GLASS WATERFALL, Woodrose Club.

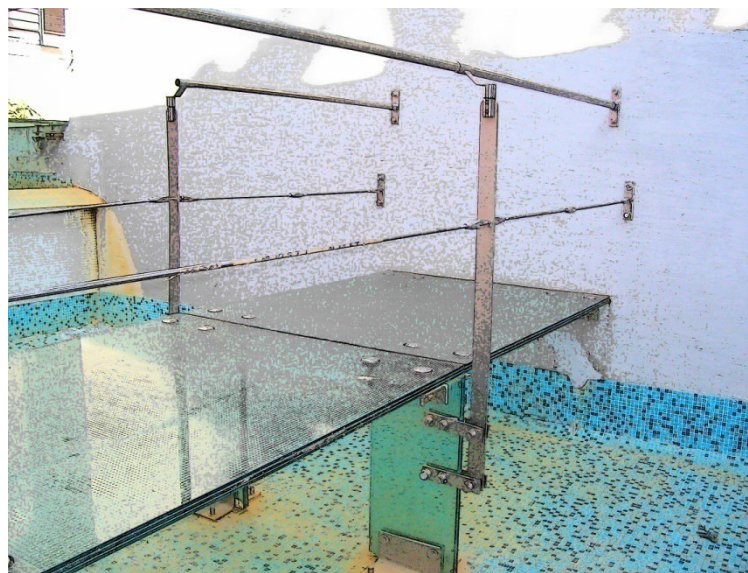


SIMPLY SUPPORTED  
TRIPLE LITE GLASS  
BRIDGE,  
WOODROSE CLUB.

WOODROSE CLUB,  
BRIGADE MILLENNIUM  
Architects: **OCHRE &  
ARCHITECTURE PARADIGM**



POINT FIXED GLASS BRIDGE, WOODROSE CLUB.



#### **DETAILING at a MICRO SCALE:**

*The integrity of a very complicated glass waterfall or a very simple glass railing system depends upon the amount of effort invested in understanding the micro dynamics of how different materials will behave under extreme loading.*

*Designs reveal the structural load bearing capacity of the materials being used.*

S  
T  
A  
I  
R  
C  
A  
S  
E  
S  
&  
B  
R  
I  
D  
G  
E  
S



THANK YOU FOR YOUR TIME

