



Chemical Resistant Plastic Fans

The chemical resistant fan for demanding environments

Chemco plastic fans are the ideal chemical exhaust fan, designed to provide efficient, reliable service in the most demanding environments.

Chemco fans supplied by Ace Advance Engineering are manufactured from Polypropylene (PP) and have superior corrosion and chemical resistance qualities. They are robust in construction and guaranteed to provide many years of trouble-free, energy efficient and economical performance.

Chemco is a recognised leader in the manufacture of equipment made from anti-corrosive and chemical resistant plastics and supplies a complete range of high quality, efficient radial tip backward-curve fans, which offer excellent performance and low noise levels.

These fans conform to global standards, have an open and flexible drive platform and are simple to configure and operate.



Advanced features

The true spiral fan casing of the Chemco fans has a high efficiency inlet cone to give an even distribution of air, while the plastic injection moulded backplate can be easily removed for servicing or to change the rotation.

Chemco fan radial tip backward-curve impellers are single inlet, single width (SISW). They are precision plastic injection moulded with a cast-in metal hub and mechanically welded to the highest quality standards giving them excellent aerodynamic properties.

The hubs are designed for use with taper-bushes and are made of high-grade cast plates to guarantee their reliability at high peripheral speeds.

The fan base and support stands are precision manufactured from heavy gauge steel. Corrosion prevention is achieved by zinc plating

and powder coating as standard but galvanising and stainless steel options are also available. The design of the support stand allows rotation of the fan casing to achieve different discharge directions.

The majority of Chemco fans are supplied with direct drive arrangements.

Other options

Chemco chemical resistant fans are available in PVC, PE, PVDF or glass reinforced plastic (FRP) subject to minimum order.

Impellers can also be made from thermoplastic material blended with composites for high temperature, flame retardant, ultraviolet or electrostatic discharge protection.

Belt drive fans can be produced upon request.

Accessories

WN90 series variable speed drives

Fan Type Code

CHEM 160 PP DD

Type of drive

DD = Direct Drive

BD = Belt Drive

Material

PP = Polypropylene

GRP = Glass Reinforced Plastics

Size = Inlet/Outlet diameter

Chemical Fan

“ The Chemco fans are designed for high efficiency, reliability and are made from superior anti-corrosive chemical resistant plastics ”



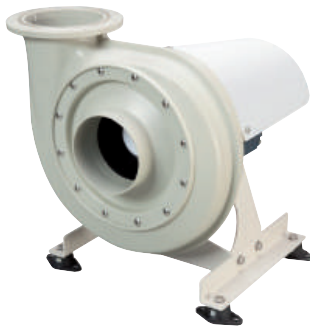
CHEM 75



CHEM 90



CHEM 110



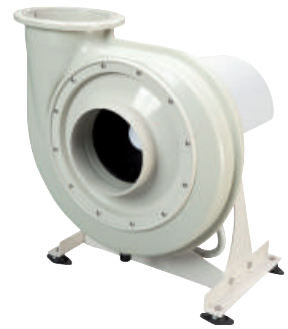
CHEM 125



CHEM 160



CHEM 180



CHEM 200



CHEM 250



CHEM 315



CHEM 400

Chemco fans are available in sizes up to 1250mm diameter with a Volume Flow Rate of up to 10,000 m³h

Accessories:



Mixed Flow In Line
















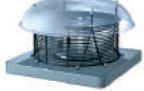


FRP Wall Fan



VFD / Frequency Inverter

Your expert partner for ventilation and exhaust requirements

<ul style="list-style-type: none"> › New: Fume Jet › New: Turbo Pressure Chemical Resistant Centrifugal Fans 					
<ul style="list-style-type: none"> › Chemco Fans › Mixed-Flow Fans › Axial Flow Fans › Centrifugal Fans 					
<ul style="list-style-type: none"> › Tube Fans › Wall Fans › Roof Fans 					
<ul style="list-style-type: none"> › Cabinet In Line › Car-Park Jet Fans 					
					
					
					
					

For further details or information, kindly contact:



ACE ADVANCE ENGINEERING (0019905150-A)
 91-1, JALAN PJU 1A/41B, PUSAT DAGANGAN NZX,
 47301 PETALING JAYA, SELANGOR, MALAYSIA
 Tel: 603-7883 0064 Mobile: 016-2123 249 (Mr. Cheng)
 Email: chemco.ace@gmail.com