



# DIVI® FAST TRACK

Quick Ship Program

**AIS**

# PRACTICAL FURNITURE IMPRACTICALLY FAST.

---

The Divi Fast Track program is designed for those who need beautiful yet practical workstations quickly. Our open plan environments can feature fixed height or height adjustable tables – along with a range of seating solutions. You'll find all you need here.

Best of all, we'll ship your complete offices in just weeks. Your business will be up and running in no time.



## ESSENTIALS FOR ESSENTIALLY EVERYONE.

Divi delivers on all the positives of a streamlined 2 inch panel-based solution, with remarkable flexibility and simplicity. There's a Divi Fast Track solution for almost every workspace need, making it the smart, scalable answer for individuals and teams across your organization. From highly collaborative offices to virtually distraction-free workstations, all the essentials are possible here.

Divi Fast Track products ship in 10 business days.

# VALUE PRICED. VALUE BASED.

The Divi Fast Track program includes a range of design solutions to meet both your team's needs and your budget requirements.

Explore glass panels and screens, storage options, height adjustable tables, accessories – and a range of task and guest seating.

Consider giving teams greater choice with height adjustability. Divi is designed to readily accommodate height adjustable tables, ensuring posture shifts can be supported throughout the day. There's great value in that.



Divi Fast Track products ship in 10 business days.



## TIME MATTERS.

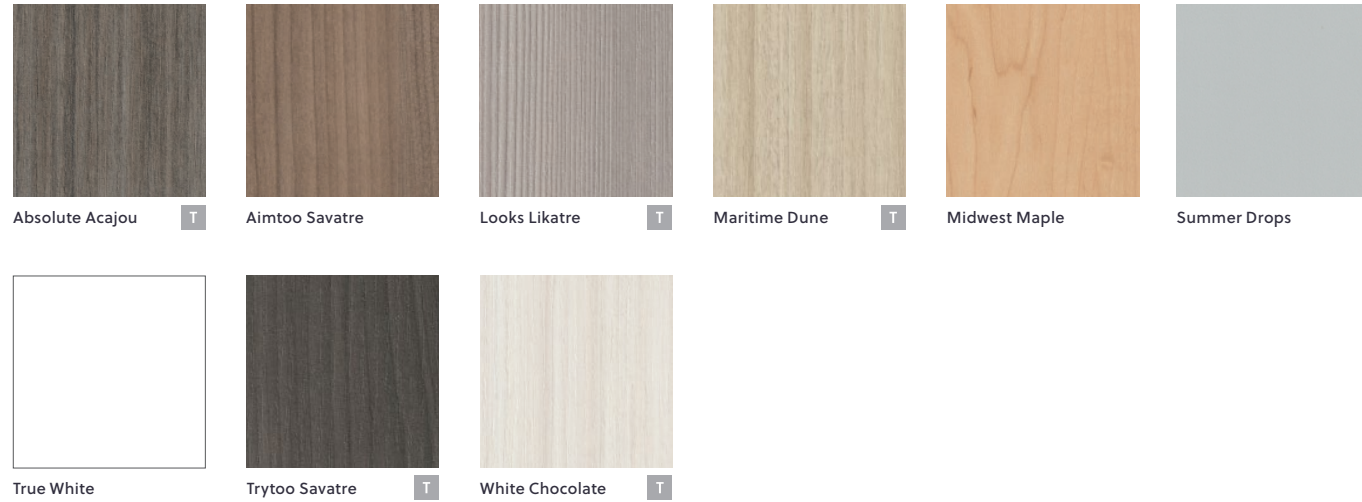
You'll appreciate the efficiency of the Divi Fast Track program on all fronts. From designing with a range of workstation choices to selecting from a refreshed palette of colors to shipping and installation, speed is at the heart here.

Need to move, add or change your workstations? We know time is money and that's when you'll discover how easily and quickly Divi can support your organization's shifting needs.

Divi Fast Track products ship in 10 business days.

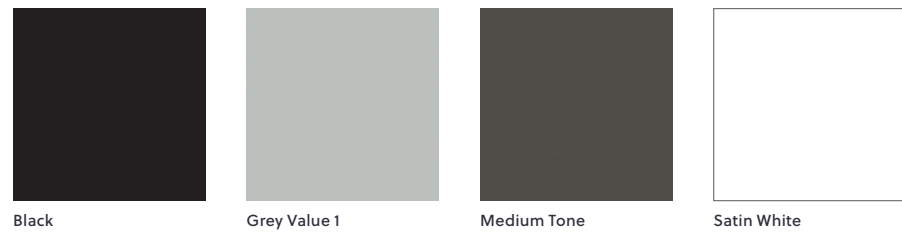
# MATERIALS & FINISHES

## Laminate Finish Options



**NOTE:**  
Matching edge detail available for all laminate options above.  
T = Indicates a textured laminate.

## Paint Finish Options

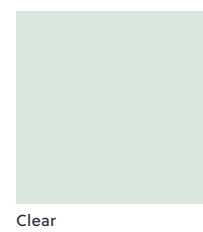


## Day-to-Day and E Series Height Adjustable Tables - Paint Finish Options

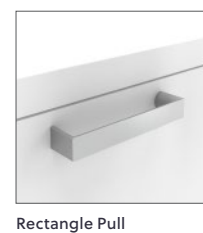


**NOTE:** All Divi Fast Track worksurfaces and height adjustable tables are standard with 2mm edge detail.

## Glass Finish Option



## Pull Handle Options



## Volker Cube and Ped Cushion Upholstery Options



**NOTE:**  
Mirador is standard as an antimicrobial upholstery.  
Available on ped cushion and Volker Cubes only.  
Mirador is offered on Divi Fast Track for pedestal cushions and Volker cubes only.

## Laminate Edgeband Options

| Color Name      | Color Code |
|-----------------|------------|
| Absolute Acajou | AA         |
| Aimtoo Savatre  | AS         |
| Looks Likatre   | LK         |
| Maritime Dune   | MD         |
| Midwest Maple   | MM         |
| Summer Drops    | SD         |
| True White      | TW         |
| Trytoo Savatre  | TS         |
| White Chocolate | WC         |

## Paint Edgeband Options

| Color Name   | Color Code |
|--------------|------------|
| Black        | BK         |
| Grey Value 1 | GV-1       |
| Medium Tone  | MT         |
| Satin White  | SW         |

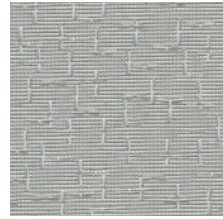
## Paint Finish Options Grid

| Color Name      | Divi Panels | Divi Base | L Series Storage | Day-to-Day Table Bases | E Series Table Bases |
|-----------------|-------------|-----------|------------------|------------------------|----------------------|
| Black           | •           | •         | •                | •                      | •                    |
| Grey Value 1    | •           | •         | •                | N/A                    | N/A                  |
| Medium Tone     | •           | •         | •                | N/A                    | N/A                  |
| Metallic Silver | N/A         | N/A       | •                | •                      | •                    |
| Satin White     | •           | •         | •                | •                      | •                    |

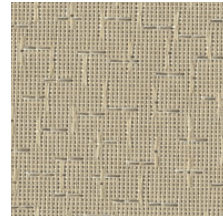
Please request samples to view before specifying, as the colors, materials and finishes featured within our printed and electronic literature may vary due to the printing processes and/or viewing monitors used. Availability of finishes and materials shown may vary due to manufacturers' lifecycle and management.

# MATERIALS & FINISHES

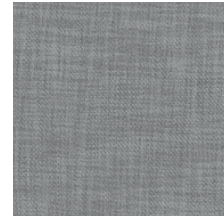
## Panel Fabric Options



Avenue  
Dusk



Avenue  
Park Place



Cape Cod  
Chatham



Cape Cod  
Falmouth



Cape Cod  
Harwich



Cape Cod  
Hyannis



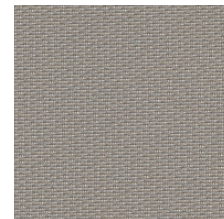
Cape Cod  
Jet



Cape Cod  
Meadow



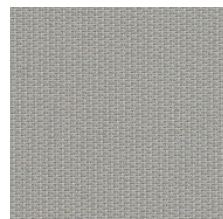
Cape Cod  
Nantucket



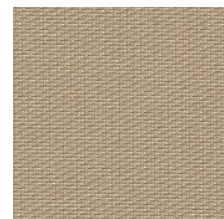
Engage  
Denim



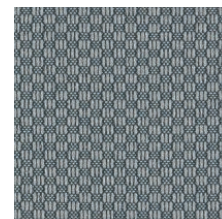
Engage  
Neutral



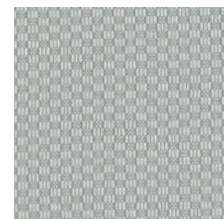
Engage  
Rain Cloud



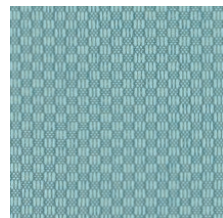
Engage  
Toffee



New England  
Cambridge



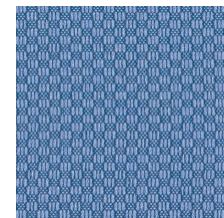
New England  
Concord



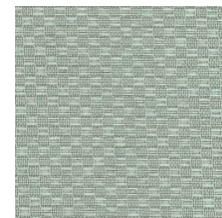
New England  
Dixville Notch



New England  
Ivory



New England  
Lexington

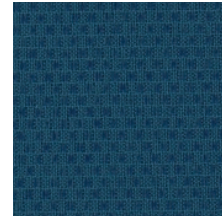


New England  
Moss

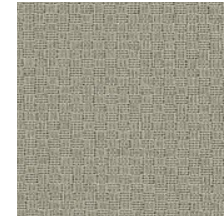


New England  
Newton

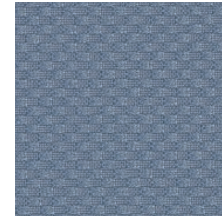
## Panel Fabric Options



New England  
Night



New England  
Whale



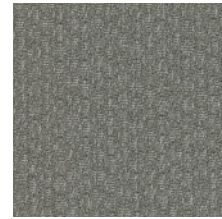
New England  
York



Rainfall  
Bliss



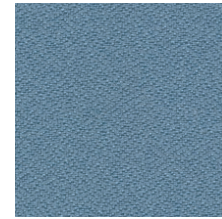
Rainfall  
Shore



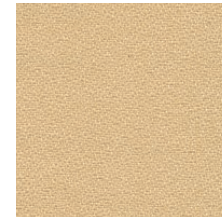
Rainfall  
Sundown



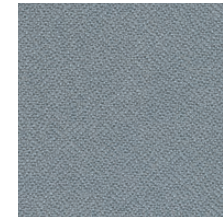
Rainfall  
Twilight



Simplicity  
Blue Smooth



Simplicity  
Chamoise



Simplicity  
Gray Blue



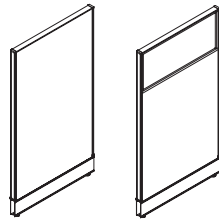
Simplicity  
Stone



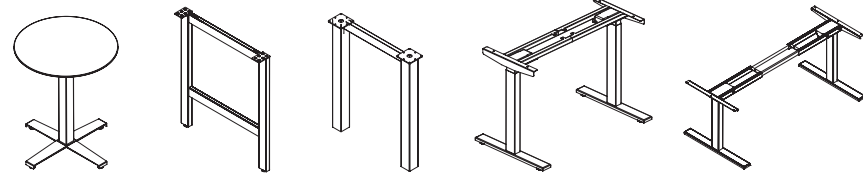
Twizzle  
Tan

# EXPLORING THE QUICK SHIP OFFERING

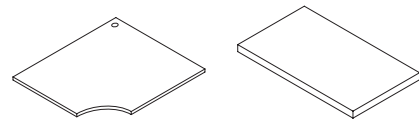
## Panels



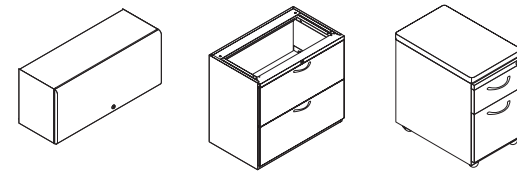
## Tables and Leg Kits



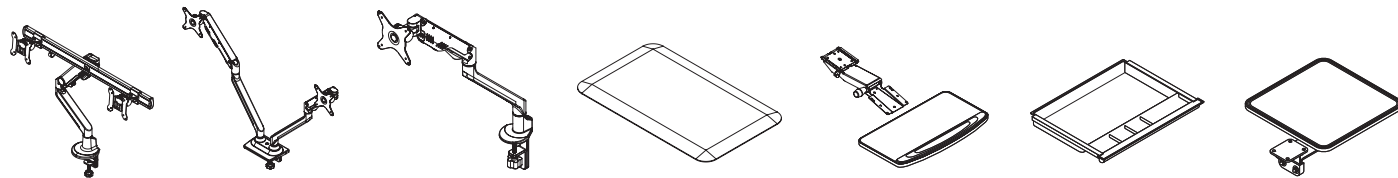
## Worksurface Tops



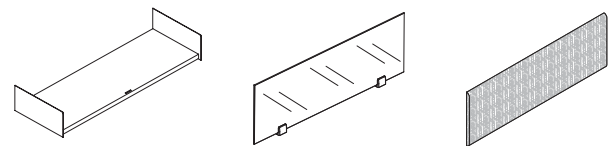
## Files and Storage



## Accessories (Monitor Arms, Anti-Fatigue Mats, Keyboard Trays, Pencil Drawers and More)



## Shelves, Screens and Tackboards



# OPTIONS FOR ANY ENVIRONMENT & BUDGET

Jumpstart your project with our idea starters online.



Idea Starter 2



Idea Starter 3



Idea Starter 5



Idea Starter 6



Idea Starter 7



Idea Starter 8



Idea Starter 14



Idea Starter 18



# FEATURED FABRICS & FINISHES

## Cover

**Workstation Worksurface:** Maritime Dune **Panel Fabric:** Engage Rain Cloud  
**Workstation Paint & Base:** Grey Value 1 **Height Adjustable Table Legs:**  
Day-to-Day Height Adjustable Table - Satin White **Support Legs:** Satin White  
**Pedestals:** GV1 **Table Worksurface:** True White **Table Base:** Grey Value 1  
**Volker Cube:** Mirador Navy Blue **Seating:** Devens Express – Black/Black

## Page 2-3

**Workstation Worksurface:** True White Laminate **Height Adjustable Table Bases:**  
Satin White **Overhead & L Series Steel Pedestals with Rectangular Pull:** Satin  
White **Trim:** Medium Tone **Panel Fabric:** Simplicity | Chamois & Stone **Seating:**  
Bolton Express | Black/Black

## Page 4-5

**Workstation Worksurface:** Looks Likatre **Panel Fabric:** Engage Avenue Dusk –  
Inside Accent – New England Lexington **Workstation Paint & Base:** Satin White  
**Height Adjustable Table Legs:** E Series Height Adjustable Table - Metallic Silver  
**Pedestals:** Satin White with Mirador - Light Green **Seating:** Devens Express –  
Grey/Grey

## Page 6-7

**Worksurface:** White Chocolate **Panel Fabric:** Cape Cod Chatham **Workstation  
Paint & Base:** Satin White **Height Adjustable Table Legs:** E Series Height  
Adjustable Table - Metallic Silver **Pedestals:** Satin White with Mirador - Lake  
Blue **Seating:** Devens Express – Black/Black

## Page 8-9

**Worksurface:** Aimtoo Savatre **Panel Fabric:** New England Lexington  
**Workstation Paint & Base:** Satin White **Support Legs:** Satin White  
**Lateral Files:** Satin White **Seating:** Bolton Mid Back Express – Black/Black

Please request samples to view before specifying as the colors, materials and finishes featured within our printed and electronic literature may vary due to the printing processes and/or viewing screens used. Availability of finishes and materials shown within this brochure may vary due to manufacturers' lifecycle management.

## National Showrooms:

### Leominster

AIS Headquarters  
25 Tucker Drive  
Leominster, MA 01453

### Chicago

The Merchandise Mart  
Suite 391  
Chicago, IL 60654

### New York

AIS New York  
257 Park Avenue South,  
3rd Floor, Suite 301  
New York, NY 10010

### Washington, D.C.

AIS Washington, D.C.  
1501 M St., NW, Suite 230  
Washington, D.C. 20005

### GSA Sales

GSA Contract 47QSM20D08Q4  
Multiple Award Schedule (MAS)  
Large Category: Furniture & Furnishings  
Subcategories: Office Furniture, Packaged Office Furniture and Furniture Services

### For additional information on AIS:

Dealer Showrooms, Representative Directory, Project  
Case Studies, Online Catalog & Product Showcase  
**Visit: [ais-inc.com](http://ais-inc.com)**

