

Furni
businessfurni.com

VISION. PRECISION. FURNISHED.

FINAL TO ORDER 11.24.25



THE LEADER IN OFFICE FURNITURE SOLUTIONS



Furni is a comprehensive office furniture and white glove logistics corporation, with over 20 years of experience in the industry. We are headquartered in Lumpkin County, Georgia. We take great pride in our stature as one of the highest rated office furniture corporations in the Southeast. We maintain offices in Dahlenega & Tampa.



- In the contemporary workspace, mere functionality is no longer sufficient. Workspaces must foster collaboration, promote learning, and facilitate socialization. At Furni, we appreciate that creating an optimal workspace involves more than just fulfilling spatial and functional needs.
- Dedicated to a distinctly collaborative approach to design and complemented by flawless planning and execution processes, Furni offers a level of performance that reliably surpasses expectations. We work intimately with individual businesses as well as design and architectural firms, offering products and services that are customized to suit their unique requirements.
- At Furni, we understand the art and science of workspace creation and optimization, and we translate that understanding into real-world solutions that meet and exceed the demands of today's evolving workplace.





SERVICES

Led by collaborative design and a team implementation approach, Furni offers a comprehensive array of services including:

PLANNING SUPPORT

With creativity and attention to detail, our accredited planners help you create great spaces that are innovative, productive, and comfortable. Utilizing the latest in planning technology, we quickly create plans and specifications to help you develop space and budget requirements.

PROJECT MANAGEMENT

Our project managers work closely with your account executive to ensure the details of your project are managed with end goals in mind. Before your order is even placed, our project managers address issues such as timing, building access, trade coordination, and manufacturing cycles.



INSTALLATION & PROFESSIONAL DELIVERY SERVICE

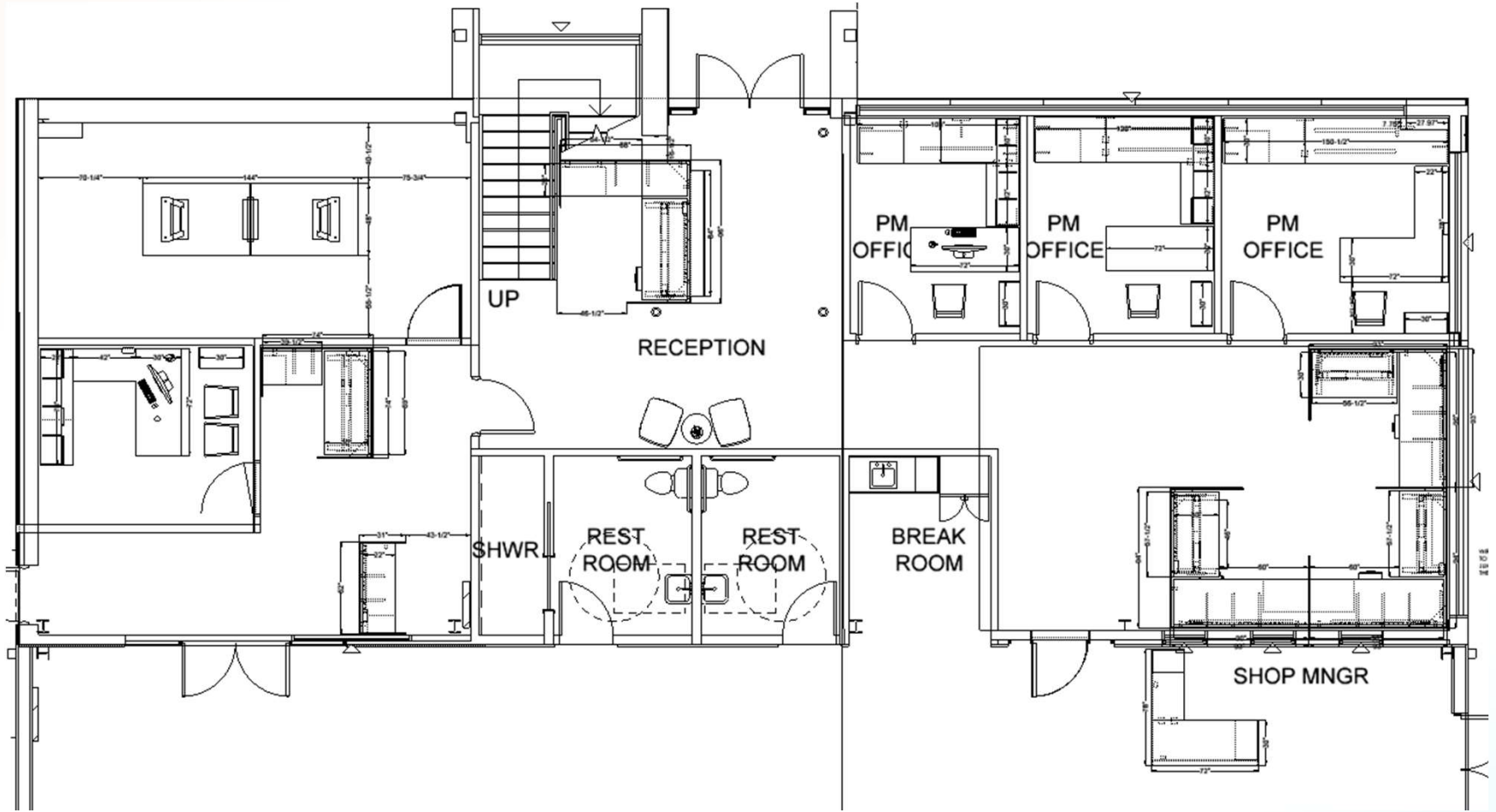
Experience, training, and hands-on management are the key ingredients to the success of our installations. Our teams of certified installers work closely with our account executives and project managers to ensure your installation is completed on time and within budget.

FURNITURE RECONFIGURATION

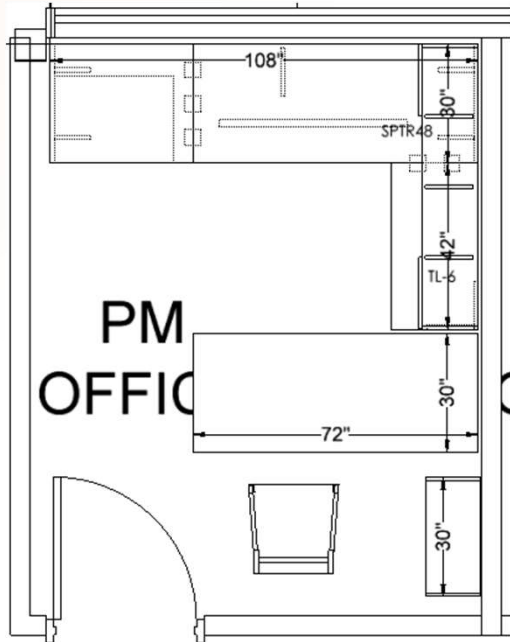
Facilities and workplace strategies often change. Furni helps systems furniture adapt and change with you. If you are looking to use a space more efficiently, or wanting to increase employee productivity and comfort, our team of space planners can advise you, prioritize your needs, and incorporate new looks. Our seasoned installation team efficiently performs each reconfiguration to meet your specific needs.



First Floor Overall Plan View:



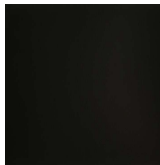
PM Private Office 1 Final Layout:



- OFS Staks with Height Adjustable Desk, Fixed Bridge & Credenza
- OFS Staks Multi-File Storage
- OFS Staks Wall Mounted Storage with Sliding Frosted Glass Doors, 72W
- OFS Staks Wall Mounted Tackboard, 72W
- OFS Staks Bookcase- 30"W x 65"H
- OFS Balance Guest Chair



Drift Laminate



HAD Base Paint: Black



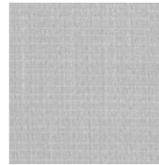
Parallel Pull: Black



Balance Chair Fabric:
Haylo-Flare



Balance Legs: Pecan
on Ash



Tackboard Fabric:
Gatsby-Windsor



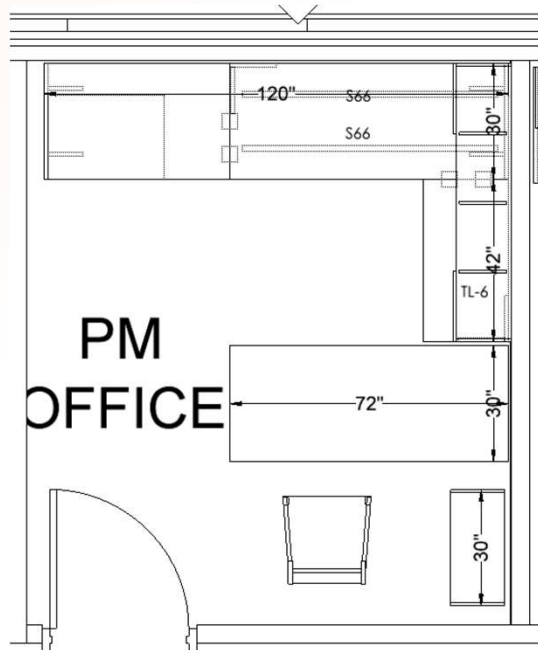
Desktop Power Unit: Black



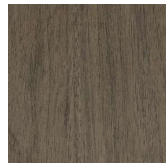
OFS Balance Guest Chair



PM Private Office 2 Final Layout:



- OFS Staks with Height Adjustable Desk, Fixed Bridge & Credenza
- OFS Staks Multi-File Storage
- OFS Staks Wall Mounted Storage with Sliding Frosted Glass Doors, 72W
- OFS Staks Wall Mounted Tackboard, 72W
- OFS Staks Bookcase- 30"W x 65"H
- OFS Balance Guest Chair



Drift Laminate



HAD Base Paint: Black



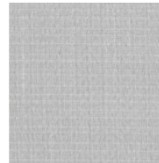
Parallel Pull: Black



Balance Chair Fabric:
Haylo-Flare



Balance Legs: Pecan
on Ash



Tackboard Fabric:
Gatsby-Windsor



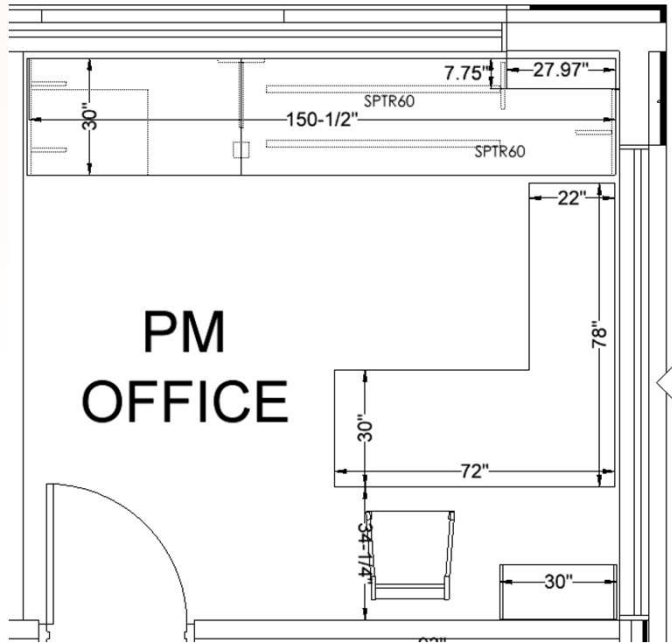
Desktop Power Unit: Black



OFS Balance Guest Chair



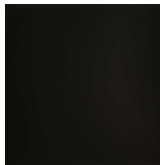
PM Private Office 3 Final Layout:



OFS Staks with Height Adjustable Desk, Fixed Bridge & Credenza
 OFS Staks Multi-File Storage
 OFS Staks Bookcase- 30\"/>



Drift Laminate



HAD Base Paint: Black



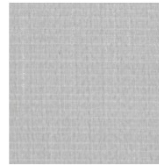
Parallel Pull: Black



Balance Chair Fabric:
Haylo-Flare



Balance Legs: Pecan
on Ash



Tackboard Fabric:
Gatsby-Windsor



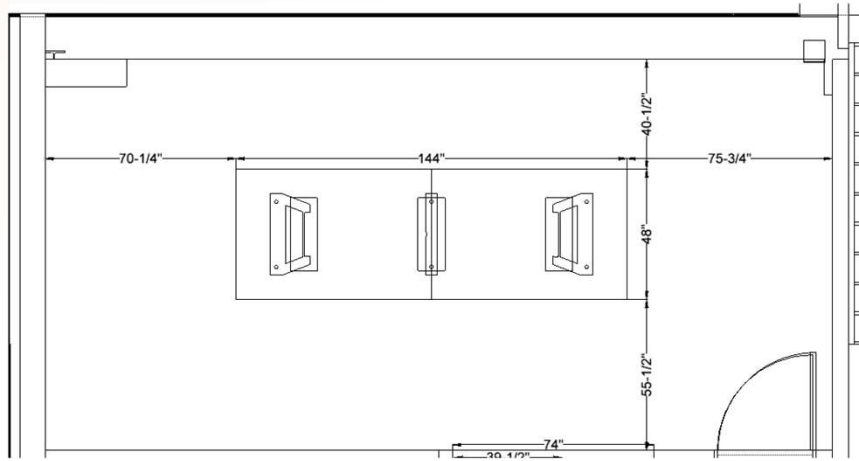
Desktop Power Unit: Black



OFS Balance Guest Chair



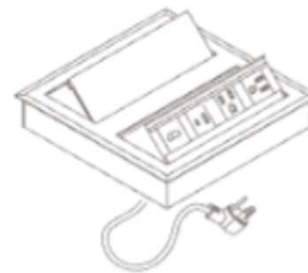
Conference Room Final Layout:



OFS Intermix Conf Table -144W x 48D, with Power

Wedge base

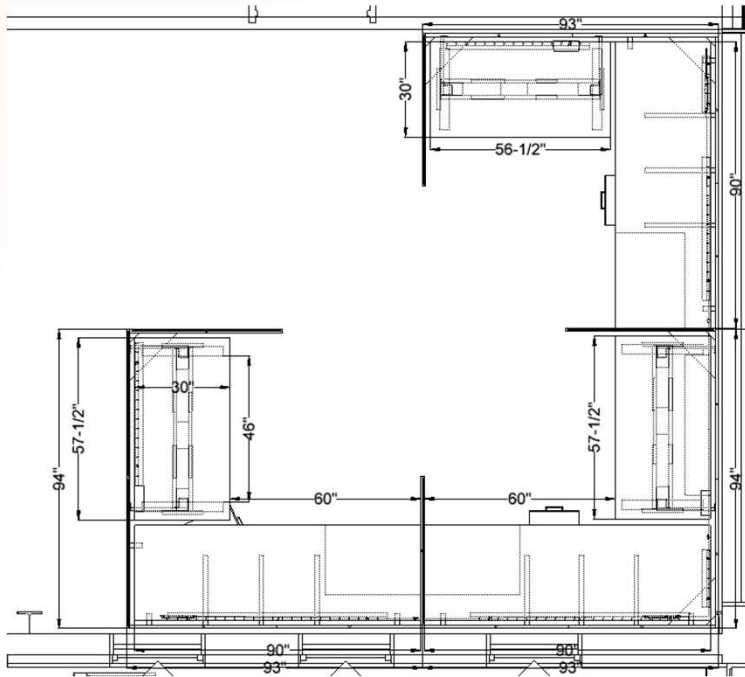
- Wire chase opening through leg with magnetic removable face
- Chase opening: 1 5/8" h x 1 1/2"
- Cavity interior: 1 1/2" w x 1 1/2" d x 25" h
- Cutout must be in between bases



Features

- (2) 110V Outlets (both sides)
- Combo USB-A/C charging (both sides)
- 1 HDMI coupler
- 1 VGA coupler
- 10' Power cord (both sides)

Project Mgt Workstation Final Layout:



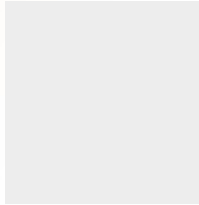
OFS Staks Station with Height Adj Desk, Fixed Return
OFS Staks Mobile Box/File ped , no cushion top
OFS Staks Multi-File



Project Mgt Station Finishes:



Drift Laminate



Pure White Laminate



HAD Base Paint: Black



Parallel Pull: Black



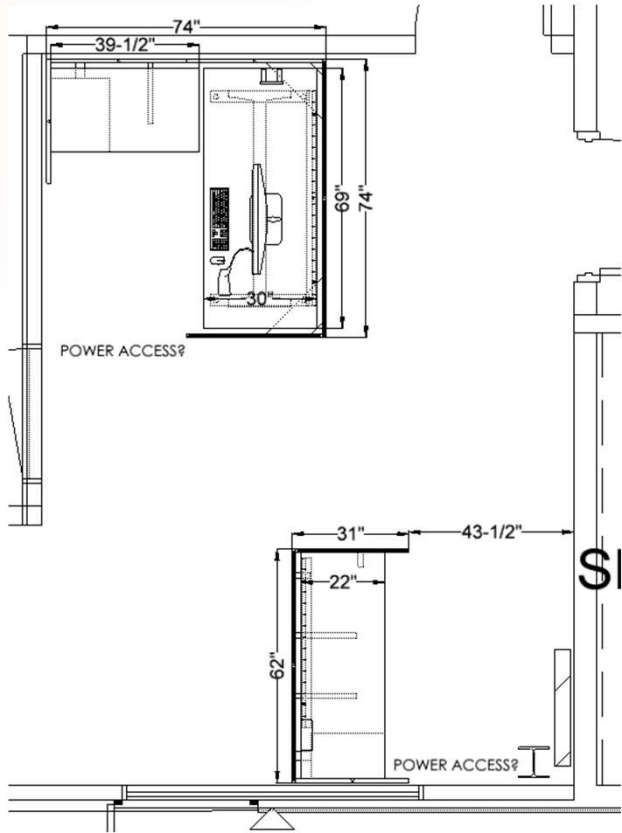
Ped Cushion Fabric:
Haylo-Flare



Desktop Power Unit: White



HR Workstation Final Layout:



OFS Staks Station with Box/Box/File Pedestal
OFS Staks HAD (69W x 30D) with Fixed Return



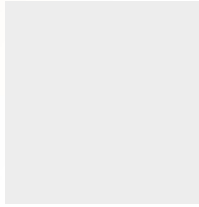
OFS Staks Station with fixed height work surface and
Box/Box/File Pedestal



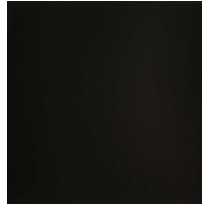
HR Station Finishes:



Drift Laminate



Pure White Laminate



HAD Base Paint: Black



Parallel Pull: Black



Desktop Power Unit: White



HR Office Final Layout:



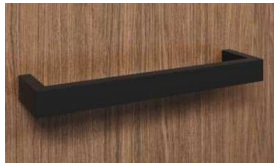
OFS Staks with Height Adj "L" Desk, Fixed Height Credenza
 OFS Staks Wall Mounted Overhead Storage with Sliding Frosted Glass Doors, 78W
 OFS Staks Wall Mounted Tackboard, 78W
 OFS Staks Bookcase, 30W x 65H
 OFS Balance Guest Chair



Drift Laminate



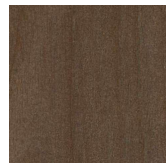
HAD Base Paint:
Black



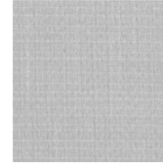
Parallel Pull: Black



Balance Chair Fabric:
Haylo-Flare



Balance Legs: Pecan
on Ash



Tackboard Fabric:
Gatsby-Windsor



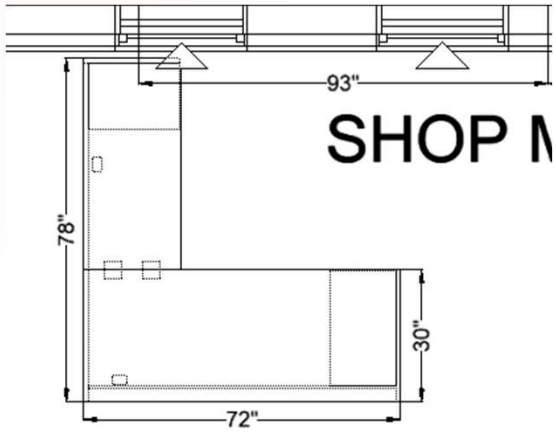
Desktop Power Unit: Black



OFS Balance Guest Chair



Shop Manager Final Layout:



OFS Pulse Desk and Return, Fixed height, with Box/Box/ File & File/File Pedestals



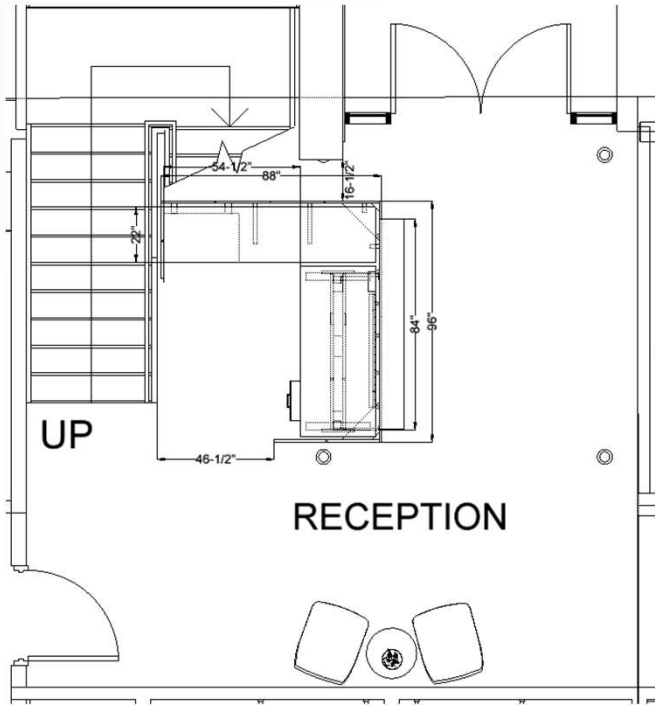
Drift Laminate



Parallel Pull: Black



Reception Final Layout:



OFS Staks Reception Desk with HAD & fixed return
OFS Staks Mobile Box/File Ped with Cushion top



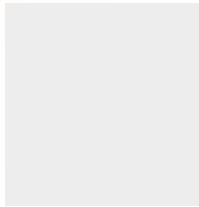
OFS Mention Chair
OFS Wyre Side Table



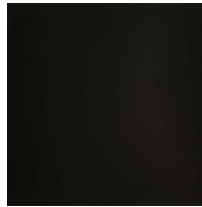
Reception Finishes:



Drift Laminate



Pure White Laminate



HAD Base Paint &
Mention Chair Base:
Black



Parallel Pull: Black



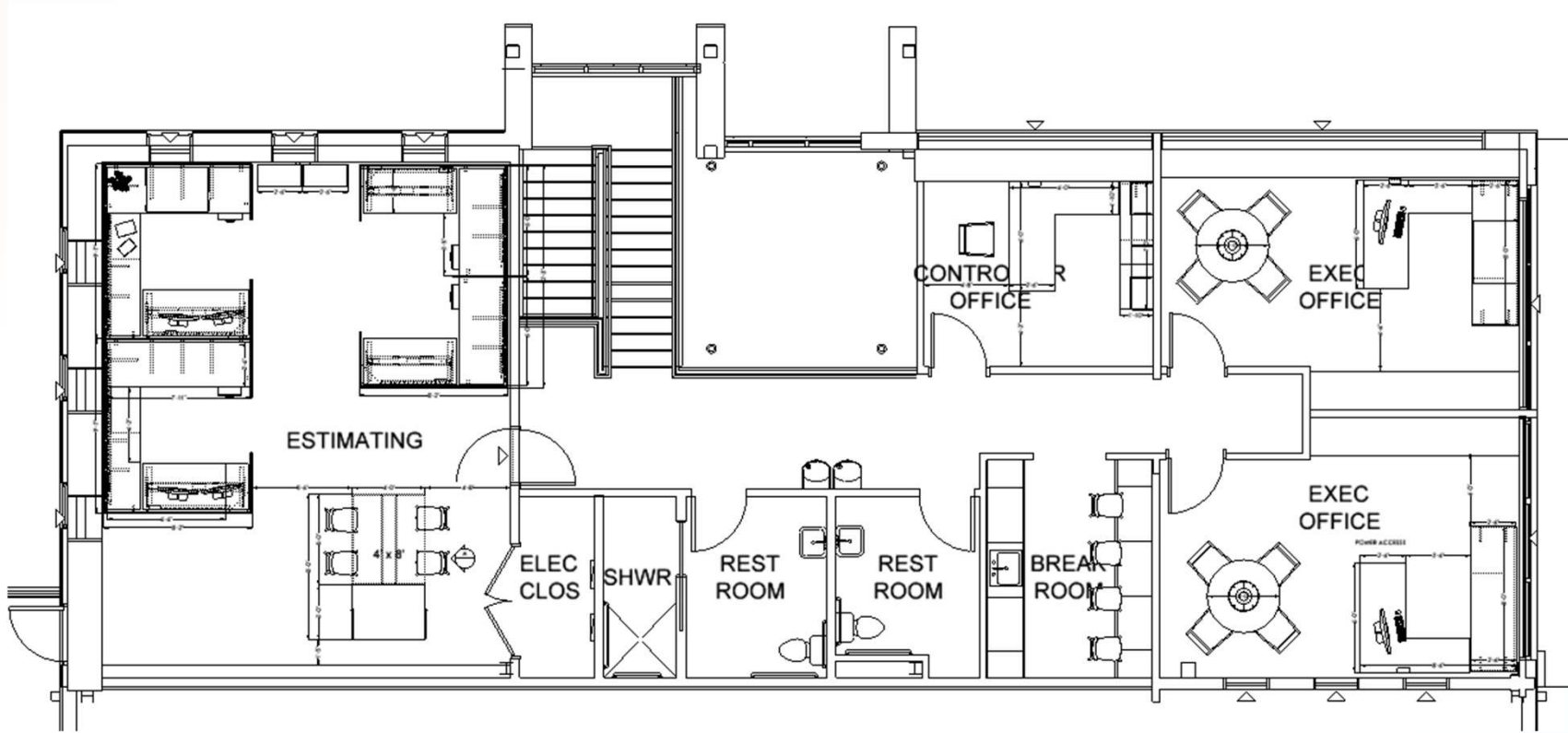
Chair Fabric: Spradling
Whisper-Cognac



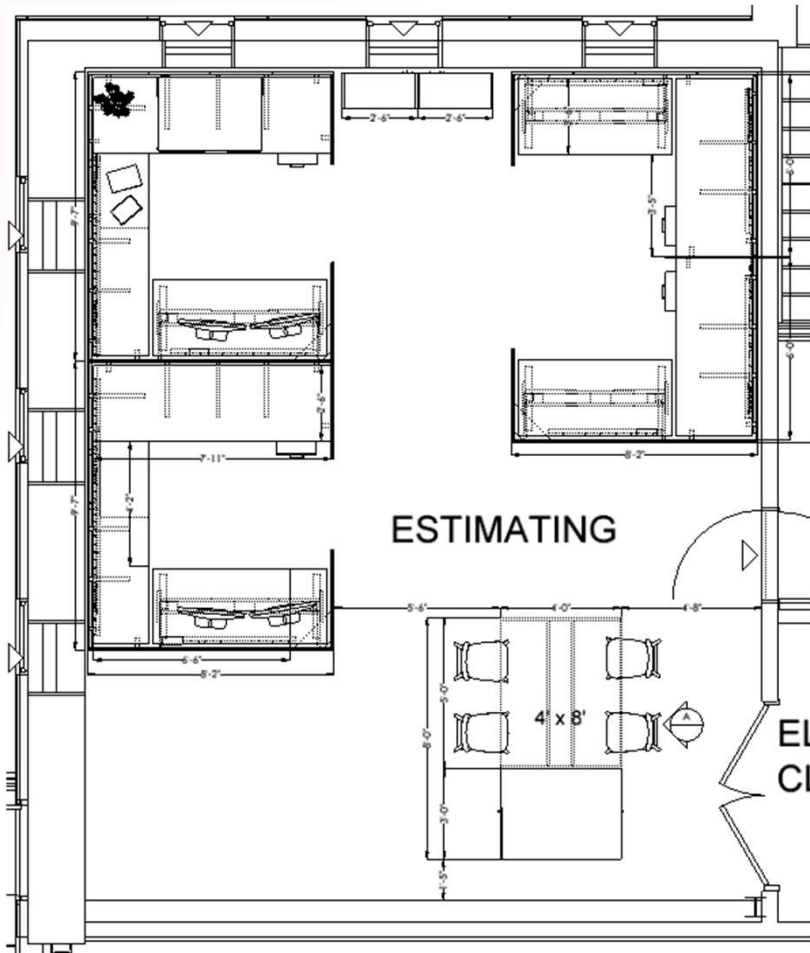
Desktop Power Unit: White



Second Floor Overall Plan View:



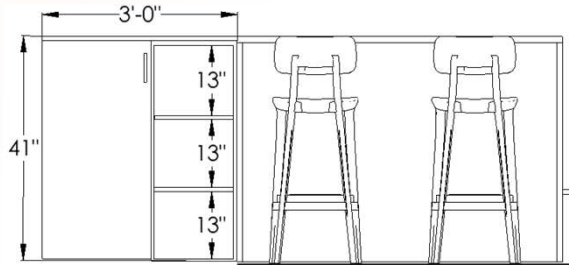
Estimating Office Workstation Final Layout:



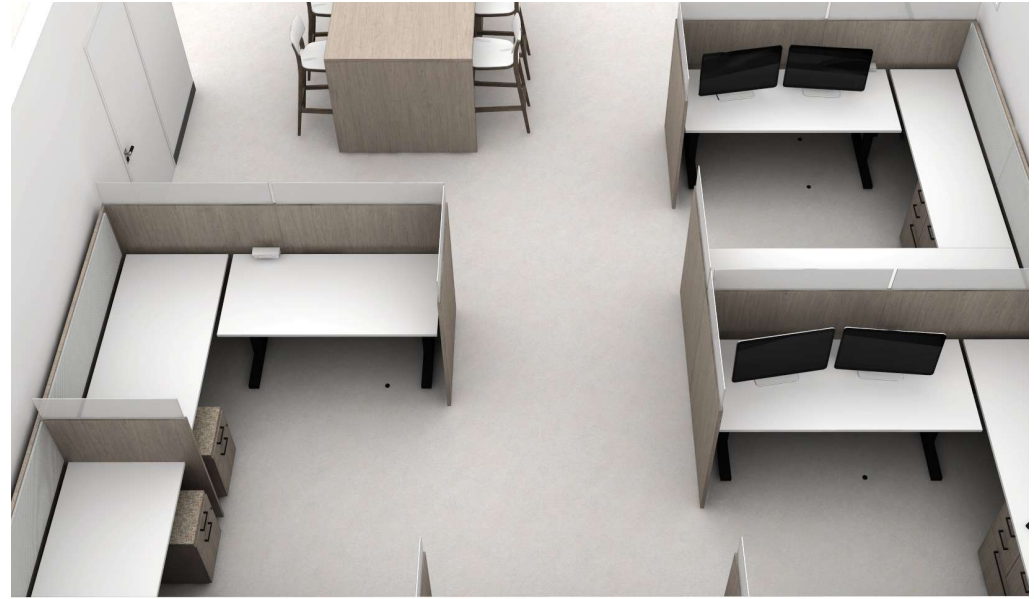
- OFS Staks Station with Height Adj Desk and Fixed Return/Bridge and Credenza
- OFS Staks Multifile
- OFS Staks Tackboards
- OFS Staks Mobile Box/File Pedestal
- OFS Staks Bookcase, 30W x 42H
- Intermix Table, 60W x 48D
- Intermix Storage Cabinet & Open Paper Storage



Estimating Office Workstation Final Layout:



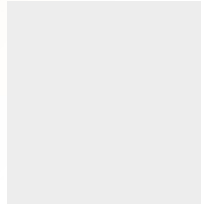
Please refer to the elevation above for the exact dimensions and look for the special cabinets.



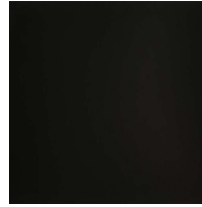
Estimating Office Finishes:



Drift Laminate



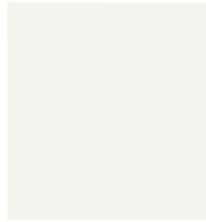
Pure White Laminate



HAD Base Paint: Black



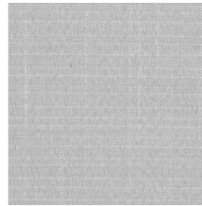
Parallel Pull: Black



JSI Jude Barstool Seat:
Extra White



JSI Jude Barstool
Base: Loft



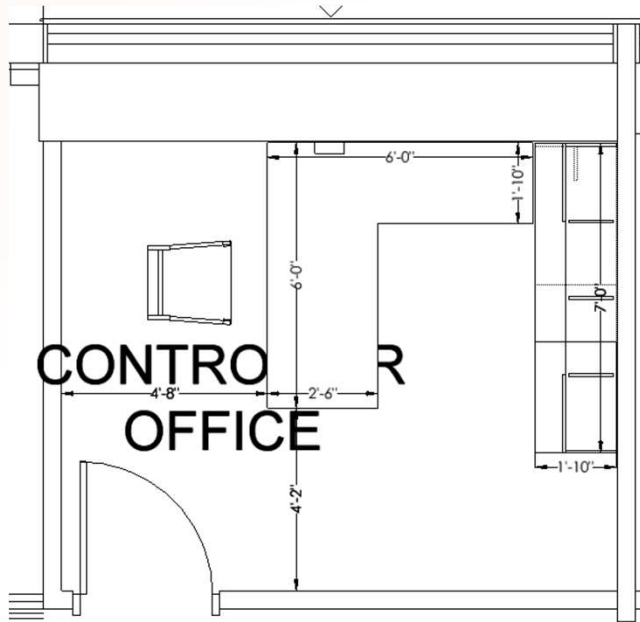
Tackboard Fabric:
Gatsby-Windsor



Desktop Power Unit: White



Controller Office Final Layout:



OFS Staks with Height Adjustable "L" Desk with Fixed Height Credenza
 OFS Staks MutliFile and Box/Box/File Pedestal
 OFS Staks Wall mounted Overhead with Sliding Doors, 84W
 OFS Staks Wall mounted Tackboard, 84W
 OFS Balance Guest Chair



Drift Laminate



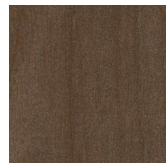
HAD Base Paint:
Black



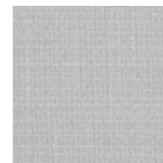
Parallel Pull: Black



Balance Chair Fabric:
Haylo-Flare



Balance Legs: Pecan
on Ash



Tackboard Fabric:
Gatsby-Windsor



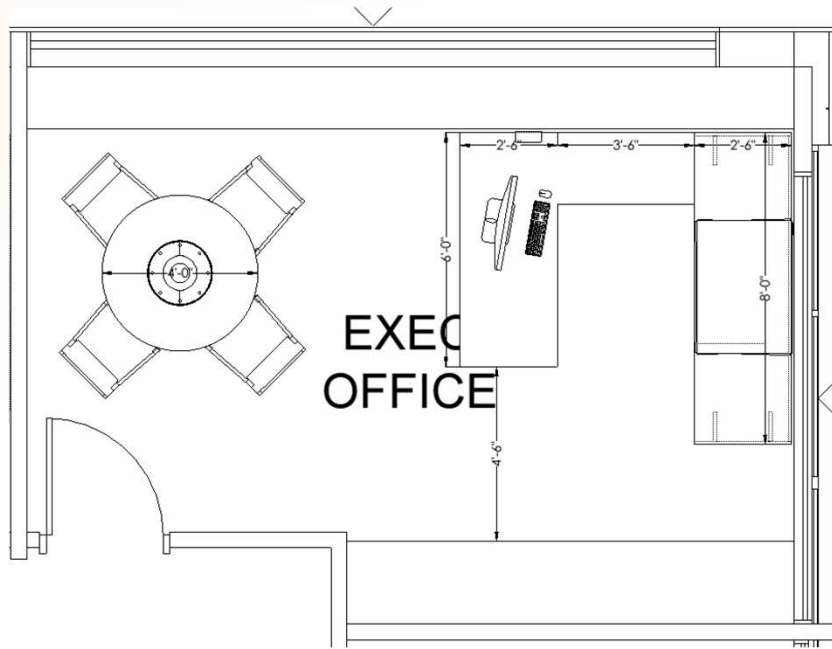
Desktop Power Unit: Black



OFS Balance Guest Chair



Executive Office 1 Final Layout:



OFS Staks with Height Adjustable "L" Desk with Fixed Height Credenza
 OFS Balance Guest Chair
 OFS Nineteen20 Round Table, 48" dia, with Tapered Base



Drift Laminate



HAD Base Paint:
Black



Parallel Pull: Black



Balance Chair Fabric:
Haylo-Flare



Balance Legs: Pecan
on Beech



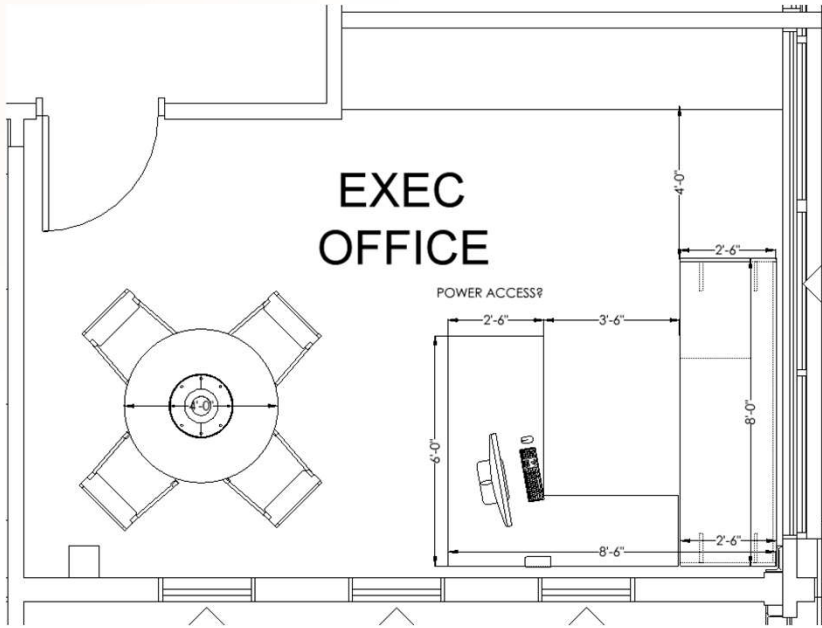
Desktop Power Unit: Black



OFS Balance Guest Chair



Executive Office 2 Final Layout:



OFS Staks with Height Adjustable "L" Desk with Fixed Height Credenza
 OFS Balance Guest Chair
 OFS Nineteen20 Round Table, 48"dia, with Tapered Base



Drift Laminate



HAD Base Paint: Black



Parallel Pull: Black



Balance Chair Fabric: Haylo-Flare



Balance Legs: Pecan on Beech



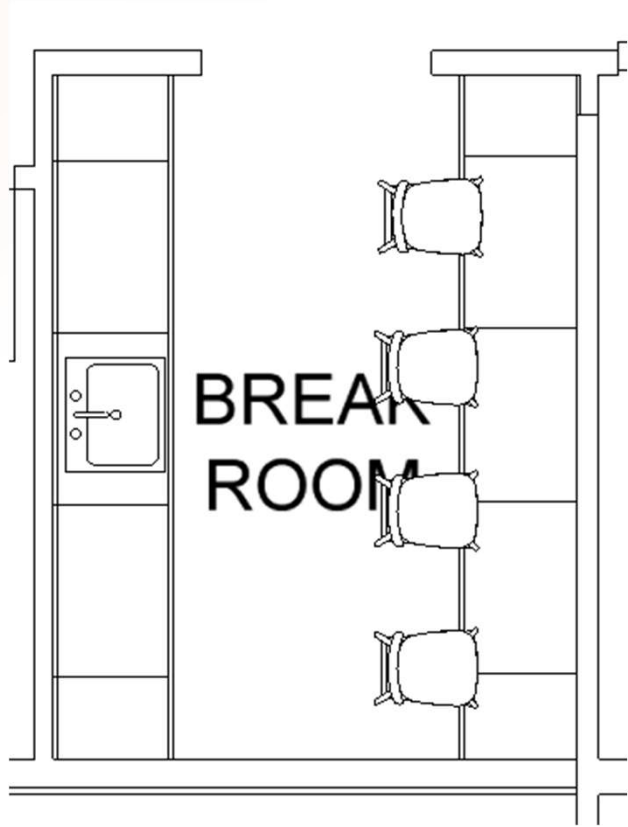
Desktop Power Unit: Black



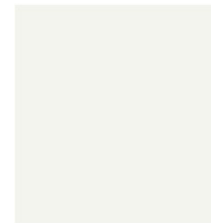
OFS Balance Guest Chair



Break Room Final Layout & Finishes:



JSI Jude Barstool Seat: Extra White
JSI Jude Barstool Base: Loft



JSI Jude Barstool Seat:
Extra White



JSI Jude Barstool Base: Loft



By signing below, the client acknowledges and approves all furniture products, specifications, fabrics, finishes, materials, design layouts, configurations, quantities, and selections contained in this presentation. The client further acknowledges receipt and review of physical samples for all applicable fabrics and finishes, and understands that colors, textures, and materials shown in digital renderings or printed presentations may vary from actual samples and final manufactured products.

Upon approval, Furni Inc. will proceed with order placement based on the selections and specifications shown herein. All products are made-to-order and cannot be modified, canceled, or returned once the order has been submitted to the manufacturer.

DocuSigned by: 1/24/2025

Chase Brackett

23E4DE783816406...

THANK YOU

