

Size of Openings :

- D = 2400 X 3000
- D1 = 2200 X 2400
- D2 = 2000 X 1000
- D3 = 2000 X 900
- D4 = 1800 X 800
- D5 = 1800 X 700
- W/V = 1700 X 900
- V1 = 2200 X 600
- V2 = 700 X 400

PROJECT :

**CONSTRUCTION OF KOINONIA
FRUIT JUICE PLAN AT LENGTE,
MAMIT DISTRICT.**

All Dimensions are in Millimetres

SCALE - NTS Sheet No 1

SHEET TITL E : FLOOR PLAN.

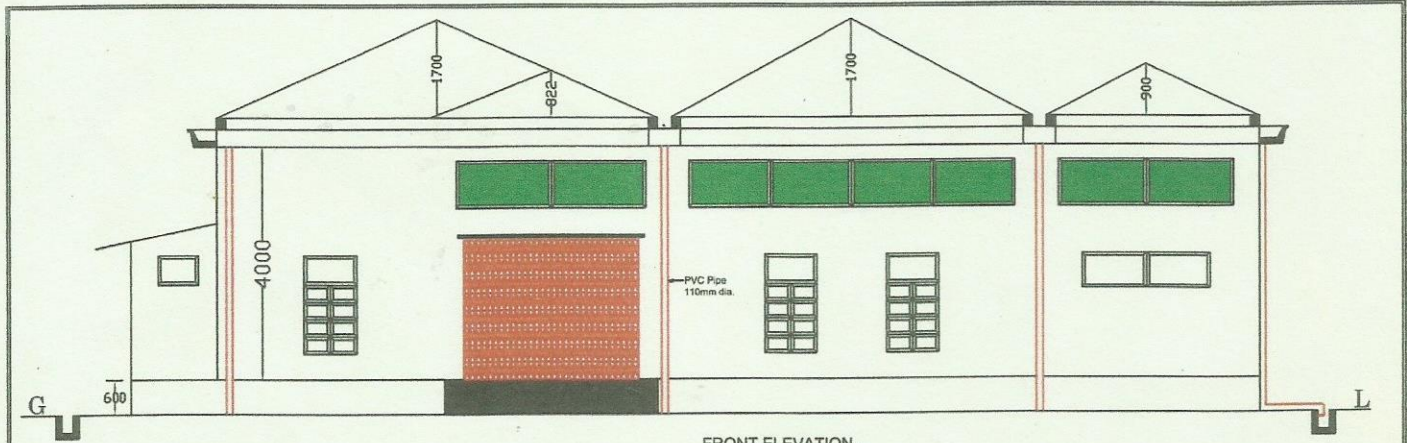
LTKA

Design by :

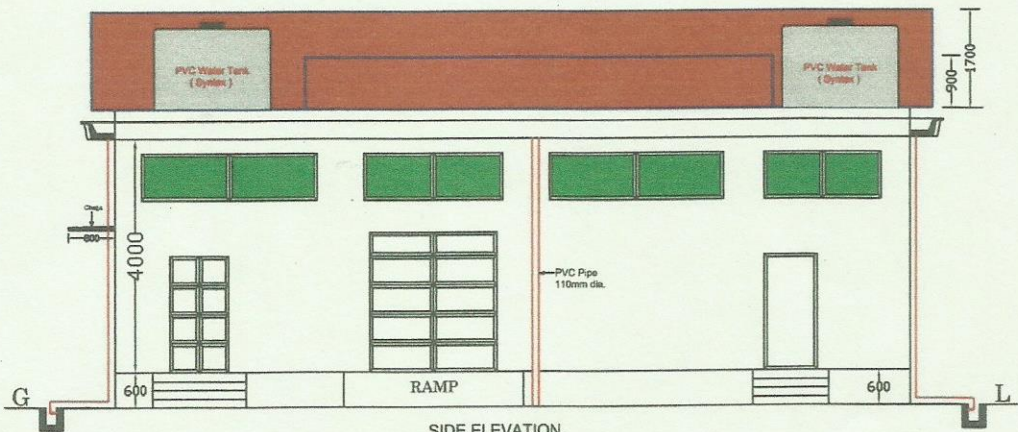
LALTHANKIMA
Engineer

B-ADA / 2008 / 012

Handwritten signature and date: 16/10/12
KOINONIA JUICE PLANT
Mizoram : India



FRONT ELEVATION.



SIDE ELEVATION.

SKY LIGHT VENTILATIONS :

- SKV 1 = 5600 X 600
- SKV 2 = 3200 X 600
- SKV 3 = 3000 X 600
- SKV 4 = 2400 X 600
- SKV 5 = 2000 X 600.

PROJECT :

**CONSTRUCTION OF FRUIT
PROCESSING UNIT AT
LENGTE, MAMIT DISTRICT**

All Dimensions are in Millimetres

SCALE - NTS Sheet No 3

SHEET TITL E : ELEVATION
(FRONT & SIDE eLEVATION).

LTKA

Design by :

LP

LALTHANKIMA
Engineer
- ADA / 2008 / 012

LP 16/10/14
KOINONIA JUICE PLANT
Mizoram : India