



# COMPANY PROFILE

---

## PT Bahana Nusa Pasifik

Buahbatu Regency Blok. F6 No. 14  
Kota Bandung, Jawa Barat - Indonesia

Stockpile : Pelabuhan H.Basrin Jelapat,  
Kabupaten Barito Selatan, Kalimantan Tengah



## About Us

*PT Bahana Nusa Pasifik*

PT Bahana Nusa Pasifik is a company that provides specialized freight transportation services using barges and has been operating since 2020. With experience and expertise, we offer efficient, reliable, and safe sea transportation solutions for all our customers and partners.

Indonesia has an extensive maritime network, including major rivers, ports, and coastal waters. Barges are used to connect ports and coastal areas with various destinations across Indonesia, playing an important role in ensuring the smooth delivery of goods and materials. Safety and security are crucial aspects of the transportation services we provide. PT Bahana Nusa Pasifik consistently complies with regulations and safety standards set by maritime authorities. We ensure that our fleet is in good condition, equipped with adequate safety equipment, and operated by well-trained crews. This makes us a dependable partner for transporting various types of cargo for our clients safely and on time.

As a maritime freight transportation company, we are ready to face global market challenges and opportunities. We are committed to continuously improving and becoming a reliable partner in supporting maritime logistics activities in Indonesia.







## Vision & Mission

*PT Bahana Nusa Pasifik*



### Company Vision

To become a trusted and reliable provider of marine freight transportation services for various types of goods, supporting maritime logistics activities in Indonesia safely, professionally, and efficiently.



### Company Mission

- Providing efficient, reliable, and safe barge transportation solutions to meet customer needs across Indonesia.
- Maintaining high-quality service by prioritizing customer satisfaction and complying with safety and security requirements.
- Strengthening collaboration with business partners, stakeholders, and maritime authorities to create added value for all involved parties.
- Continuously innovating and improving operational processes, including the use of the latest technologies to enhance efficiency and productivity.







# CORE VALUES

PT Bahana Nusa Pasifik

**In managing the company, we uphold commitments and principles expressed in the following core values:**



## Reliability

We are committed to delivering reliable and consistent services to our customers. We always fulfill our promises in terms of delivery time, safety, and operational reliability.



## Safety

Safety is our top priority. We prioritize safety in all aspects of our operations by implementing strict safety standards and providing continuous employee training.



## Excellence

We strive to achieve excellence in every aspect of our services. We continuously innovate, improve quality, and seek ways to deliver added value to our customers.



## Collaboration

We believe that teamwork and strong partnerships are the keys to success. We encourage productive collaboration between internal teams, business partners, and other related stakeholders to achieve better outcomes together.





## Our Service

*PT Bahana Nusa Pasifik*

PT Bahana Nusa Pasifik focuses on providing specialized barge transportation services for cargo, with vessel capacities ranging from 230 feet to 300 feet jumbo. We have extensive networks and partnerships with port agents across the regions, along with a wide network of vessel owners throughout Indonesia, supporting the cargo transport process effectively.

Barges are used to transport various types of natural resources such as coal, sand, gravel, oil, chemicals, and more. This service is especially important in Indonesia, a country with numerous islands and coastal areas that require access to efficient sea transportation.







## Clients and Relations

*PT Bahana Nusa Pasifik*



### Client Partner

- PT Pelindo III Tegal.
- PT Buma Tbk.
- PT Padangbara.Tbk.
- PT Cyma
- PT Widya Sapta Contractor
- PT Abadi Mineral Resources
- PT Dita Anugerah Perkasa
- PT Ray Samudra Trans
- PT Armada Prima Nusantara
- PT Moro Citra Samudera

### Agent Relation

#### Tegal

- PT Maritel
- PT Bandar Niaga Raya
- PT Antares Pasifik

#### Patimban

- PT Bahtera Othine Abadi
- PT Timur Bahari

#### Marunda

- PT Tama Samudra Lines

#### Cirebon

- PT Pelayaran Gema Bahari

#### Rembang

- PT Serunting Wijaya

#### Kalimantan Barat

- PT Andromeda Central Pasifik

#### Kalimantan Tengah

- PT Mentaya Nusa Karya

#### Kalimantan Timur

- PT Multi Karya Abdillah Lines
- PT Bahari Tirta Jaya

#### Kalimantan Selatan

- PT Antarmoda Maritim Nusantara

#### Merak

- PT Anugrah Samudra Lestari
- PT Bilqis Mutiara Bahari

### List of Relation



- PT Bukit Makmur Mandiri Utama (BUMA) - Material - Muara Tuhup - Kalteng
- PT Padangbara Sukses Makmur - Batubara - Bintang Ninggi - Kalteng
- PT Mega Multi Energi (MME) - Batubara - Bintang Ninggi - Kalteng
- PT Unirich Mega Persada - Batubara - Bintang Ninggi - Kalteng
- PT Adaro energy - Batubara - Muara Teweh - Kalteng
- PT Abadi Mineral Resources - Material - Batuladung - Kalsel
- PT Samudera Mandiri - Batubara - Bintang Ninggi - Kalsel
- PT Karunia Samudera Shipping - Batubara - Banjarmasin - Siong Bun
- PT Tri Sukses Wanatama - Batubara - Bintang Ninggi - Taboneo
- PT Anugerah Samudera Lestari - Jakarta - Jepara
- PT Bara Agung Perkasa - Batubara - Parunglahung - Teluk Timbau
- PT Berkah Borneo Maritim - Tanah Laterite - Banjarmasin - Mendawai
- PT Saikon Indonesia - Batubara - transhipment Tamtama - ERP - Kalteng
- PT Bintang Jaya Perkasa Prima - material - Merak - Sambas
- CV Sinar Sarana Utama - Material - Ketapang - Melisa
- PT Karya Adi Prestasi - Material - Bojonegara - Kuala Pembuang
- PT Trans Jaya Energi - Dewi - Sampit, Grogot





## Legality and Documentation

### PT Bahana Nusa Pasifik

#### Akta pendirian :

Notaris Muhammad Ilham Ramdhan Putra, S.H., M.Kn  
Nomor 181, Tanggal 27 Juli 2020

#### SK Kemenkumham :

No. AHU-0036806.AH.01.01.Tahun 2020

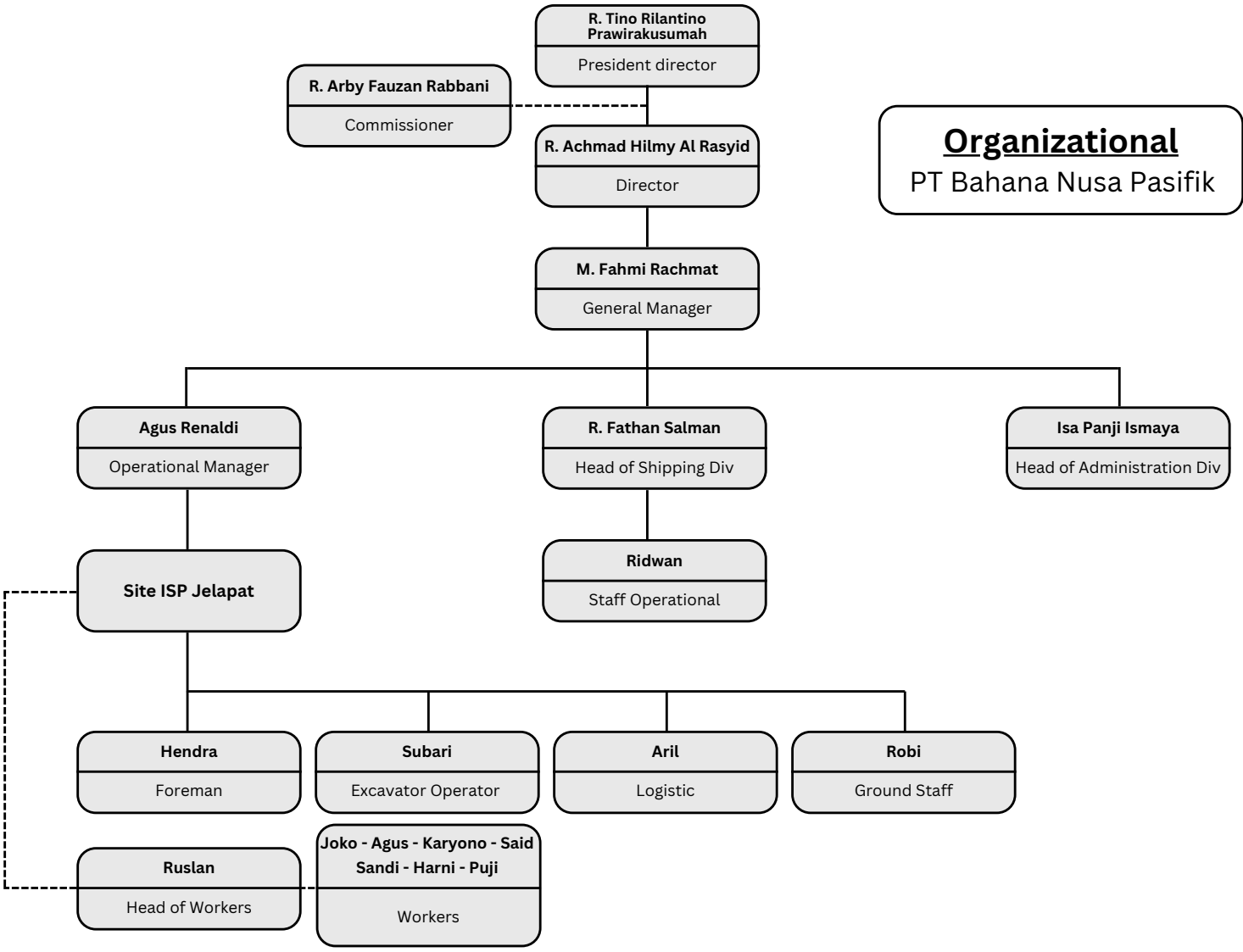
#### Nomor Induk Berusaha (NIB) :

No. 0220105890963

#### Nomor Pokok Wajib Pajak (NPWP) :

No. 95.512.644.6-444.000









***"Your Sustainability Choices,  
Best Partnership for you needs"***

## **Contact Information**

PT Bahana Nusa Pasifik

 R. Tino Rilantino Prawirakusumah

 R. Achmad Hilmy Al Rasyid

 M. Fahmi Rachmat

 Buahbatu Regency Blok. F6 No. 14  
Kota Bandung, Jawa Barat - Indonesia

 Stockpile : Jelapat RT01 RW01, Jelapat,  
Dusun Selatan, Kab. Barito Selatan,  
Prov. Kalimantan Tengah

 [office@bahananusapasifik.com](mailto:office@bahananusapasifik.com)