



From Egypt to China market entry

# Brij

## Business Set up in China

Exclusive elite product to  
Industry 4.01 global network



Info@industry4-01.com  
<http://industry4-01.com>



Verified business

Copyrights reserved © to Industry HEG consulting firm

Info@industry4-01.com  
http://www.industry4-01.com

About Industry 4.01 Consulting and Outsourcing

## Your China Presence. Built in 10 Business Days. Starting at 4,900 USD

Through our Strategic management consulting, partnership building and outsourcing

173+

Advisor and  
consultant

93%

Satisfied client

180%

Return on  
consulting

250+

Transformations

2460+

Business  
consultations

China office CEO

**Haodong Li**

Industry 4.01  
Business consulting firm

Egypt office CEO

**Husam Abozekry**

Industry 4.01  
Business consulting firm



Industry 4.01 Investment event in Shanghai with more than 150 investors

### China Consulting Partners' Message

Since January 2025, the journey from Cairo to China has been more than a route-It's a bridge of opportunity

Industry 4.01's China office extends the Power of our Egypt, UAE and New Zealand legacy, unlocking business potential across continents

**Welcome to Industry 4.01 business consulting firm office in China; Where global ambition meets local execution**

## "Adapt or Perish"

### How the Fourth Industrial Revolution Inspired Us to Support Businesses

After the outbreak of **COVID-19**, it became essential for businesses to adopt **new and smart ways** of getting things done. The world experienced **remote work, virtual reality, and the Internet of Things**, all of which proved to be highly effective.

Today, the world faces **political and economic conflicts** that could lead to **unprecedented changes in the business environment**. The only truth in today's business world is: "**Adapt or Perish.**"

That's why, on **April 1, 2022**, we launched our initiative to help businesses **adapt to this new reality**.

## Your China Presence. Built in 10 Business Days. Starting at 4,900 USD

Through our Strategic management consulting, partnership building and outsourcing

### CEOs, business partners, investors and C-suite level

**"Brij™ China Launch"** is designed to eliminate friction, compress timelines, and institutionalize your market entry. It enables CEOs and founders to establish a fully compliant operating presence in China within 10 business days—**while de-risking regulatory exposure, accelerating commercial readiness, and securing strategic positioning from day one**. It is a precision platform for high-stakes leaders who need speed without sacrificing governance, credibility, or long-term scalability.

### You're Not Just a Business Owner — You're a Visionary leader hunting opportunities

You don't wait for approvals — **you secure market access before others begin.**

You don't speculate — **you establish presence with legal and operational certainty.**

You move with speed — **Brij™ delivers China operations in 10 business days.**

You don't chase contacts — **you activate institutional networks that matter.**

You don't follow momentum — **you create it through disciplined execution.**

You turn ambition into operating reality — **fast, controlled, and scalable.**

You're not testing markets — **you're building permanent advantage in China.**



This is your opening. This is your lead.  
**Let's move into China — first.**

## Your China Presence. Built in 10 Business Days. Starting at 4,900 USD

Through our Strategic management consulting, partnership building and outsourcing

### First: Institutional Market Entry & Legal Establishment

- **Company Registration & Licensing:** Establish a fully compliant legal entity in China within 10 business days.
- **Banking & Financial Setup:** Activate corporate banking, capital accounts, and settlement structures.
- **Ownership & Structure Design:** Implement optimal shareholding, governance, and control frameworks.
- **Operational Readiness:** Enable invoicing, contracts, and local commercial operations.

### Second: Regulatory Intelligence & Commercial Validation

- **Market Entry Assessment:** Validate sector demand, pricing dynamics, and competitive positioning.
- **Legal & Tax Architecture:** Define compliant tax planning, repatriation models, and reporting systems.
- **Trade & Customs Readiness:** Structure import/export pathways and logistics compliance.
- **Policy Navigation:** Align operations with local industrial policies and incentives.



### Third: Strategic Partner & Ecosystem Integration

- **Local Partner Access:** Connect with verified distributors, suppliers, and service providers.
- **Institutional Networks:** Engage with chambers, development zones, and business authorities.
- **Commercial Channels:** Secure direct routes to B2B and B2G opportunities.
- **Trust-Based Positioning:** Build credibility with key stakeholders and decision-makers.



### Fourth: Operational Activation & Scalability Readiness

- **Talent & HR Setup:** Enable compliant hiring, payroll, and workforce governance.
- **Digital & ERP Enablement:** Integrate core operational and financial systems.
- **Supply Chain Integration:** Align sourcing, production, and distribution flows.
- **Scalability Blueprint:** Prepare the platform for multi-city and regional expansion.

### Finally: Strategic Immersion & Market Positioning – China Edition

#### • Commercial Ecosystem

**Exposure:** Access priority industrial zones, business districts, and trade hubs.

- **Corporate Culture Fluency:** Master local business norms, negotiation styles, and leadership etiquette.
- **Relationship Architecture:** Strengthen executive-level trust and long-term alliances.
- **Brand Localization Insight:** Adapt brand messaging, and positioning for China's market.

### Your China Presence. Built in 10 Business Days. Starting at 4,900 USD

Through our Strategic management consulting, partnership building and outsourcing

### "The one size fits all", Not working anymore!

In today's shifting global economy, growth is concentrated in select high-potential sectors aligned with local demand and development priorities. That's why "*Drift Beyond Borders*" focuses on **strategic industries with real momentum**—including agribusiness, electronics, textiles, automotive, construction materials, logistics, education services, manufacturing, food production, and tech—ensuring our clients explore **markets where opportunities are scalable, timely, and aligned with long-term business goals.**

#### Egyptian Sectors

Agriculture,  
Manufacturing  
Construction  
Trading & logistics  
Energy and mining



#### Egyptian Industries

Electronics  
Agribusiness  
Textiles  
Automotive  
F&B  
Recycling  
Digital Technology

#### Chinese Sectors

Agriculture,  
Manufacturing  
Construction  
Trading & logistics  
Energy and mining

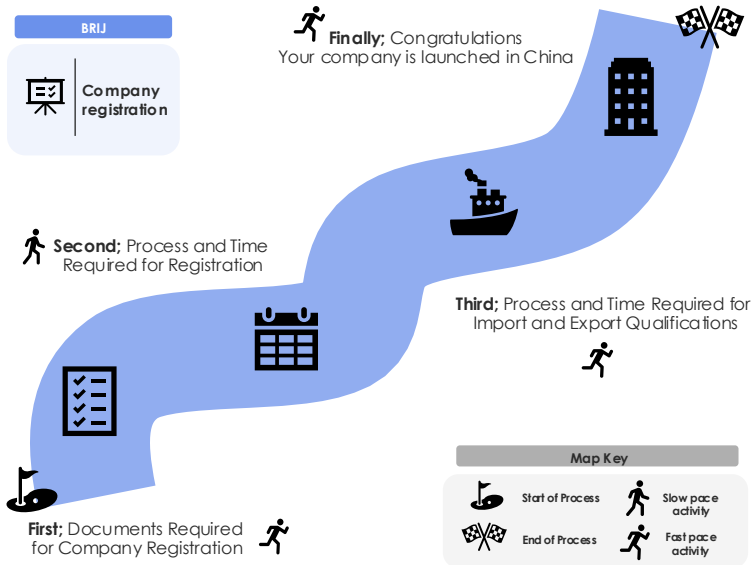


#### Chinese industries

Electronics  
Agribusiness  
Textiles  
Automotive  
F&B  
Recycling  
Digital Technology

### Your China Presence. Built in 10 Business Days. Starting at 4,900 USD

Through our Strategic management consulting, partnership building and outsourcing



### Your China Presence. Built in 10 Business Days. Starting at 4,900 USD

Through our Strategic management consulting, partnership building and outsourcing

#### BRIJ



Optional  
**Outsourcing  
Services**

#### Cashier

Bank Receipts and  
Payments  
Salary Payment  
Issue Invoices  
Collect Invoices  
Fill out Reimbursement Forms



#### Human resources

Social Insurance, Housing  
Provident Fund Payment  
Annual Report on Social  
Insurance and Housing  
Provident Fund  
Recruitment and dismissal



#### Tax rebates

Export Tax Rebates



#### Accounting

Enter Accounting Vouchers

Financial Reports Presentation

Monthly Tax Declaration and Payment

Final Settlement and Payment

Daily Online Financial Consultation

Regular Financial Taxation Policy Training



#### Administration

Annual Inspection of Industrial  
and Commercial Enterprises

Handling Matters Related to Industrial and  
Commercial Bureau and Taxation Administration

Handling Matters Related to Industrial and  
Commercial Bureau and Taxation Administration  
Archive and organize all contracts of the  
company



### Your China Presence. Built in 10 Business Days. Starting at 4,900 USD

Through our Strategic management consulting, partnership building and outsourcing

#### About our advisors, consultants and expert partners

We don't just consult — we provoke momentum. Our team dissects your business with surgical precision, exposing what others miss and delivering bold, actionable strategies that demand results. Then we shift gears — from boardroom talk to boots-on-the-ground execution — with flawless planning, resource firepower, and zero tolerance for inertia. While others overthink, we move. Fast. We help you outpace disruption, seize market openings, and turn complexity into your unfair advantage. This isn't theory. It's transformation — measured in growth, resilience, and competitive dominance. edge.

#### Some of our clients in Egypt and middle east

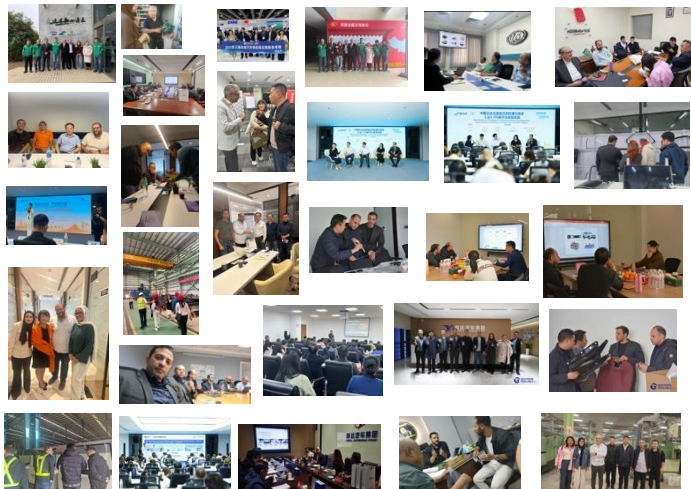




**Your China Presence. Built in 10 Business Days. Starting at 4,900 USD**

Through our Strategic management consulting, partnership building and outsourcing

**On ground activities from previous market Brij**



Info@industry4-01.com  
<http://industry4-01.com>

Secure your business, Now!

### Your China Presence. Built in 10 Business Days.

Through our Strategic management consulting, partnership building and outsourcing



Meeting



Agreement

Pay Now



**Contact us Now**

[Info@industry4-01.com](mailto:Info@industry4-01.com)

**China WhatsApp or WeChat:**

+8613661577564

[Accounts@industry4-01.com](mailto:Accounts@industry4-01.com)

**Egypt Whatsapp :**

+2 01000480015

+2 01098197227