

# Designer Series Library Shelving



All Estey Library Shelving is powder painted with a tough, baked enamel finish to assure years of lasting beauty. Please contact your local Estey dealer to view our 12 different finishes.

## A Word About Tennsco

Tennsco Corp., headquartered in Dickson, Tennessee, began operations in 1962. Today, Tennsco is an industry leader with over 1.4 million square feet of manufacturing and warehouse space in six facilities. Tennsco offers a wide variety of filing and storage systems, steel office furniture, industrial and institutional shelving, lockers and shop equipment.

For additional information on other Tennsco products, contact:



**ESTEY**  
A DIVISION OF TENNSCO CORP.

*Mailing Address:*  
P.O. Box 1888  
Dickson, TN 37056-1888

*Shipping Address:*  
201 Tennsco Drive  
Dickson, TN 37055

Toll Free Customer Service: (866) 446-8686 • Fax (866) 445-7260  
Toll Free Ordering: (866) 864-4796  
(615) 446-8000 • (800) 251-8184 • Fax (800) 722-0134  
[www.tennsco.com](http://www.tennsco.com) • [info@tennsco.com](mailto:info@tennsco.com)

**ESTEY**  
A DIVISION OF TENNSCO CORP.



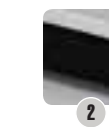


European-styling was the inspiration behind the Tennsco/Estey Designer Series Library Shelving. Its modern look coupled with versatility will bring success to any library.

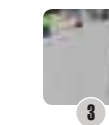
The modular system is designed to hold everything from books and periodicals to video-tapes and multi-media collections. These fully-interchangeable components allow for efficient storage and adaptability. All this along with its superior strength ensures years of use.



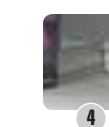
**Premium Powder Coating**  
Superior paint finish ensures durability and good looks for years of use. Optional textured finishes are available.



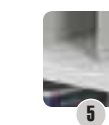
**Base Options**  
Choose from a standard Open Base or optional Closed Base which allows for easy cleaning and protection of materials.



**End Brackets**  
Stylish and durable end brackets keep your shelved materials neat and secure.



**Optional Integral Back Shelves**  
Back shelves prevent items from falling off the shelf, as well as allowing use of a wire divider.



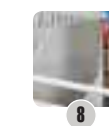
**Adjustable Shelves**  
Adjustable shelves are available in a variety of depths to meet your specific storage needs.



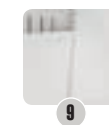
**Stabilizer Strut**  
Sturdy construction gives Tennsco/Estey Designer Series Library Shelving the strength to stand up to the heaviest capacities.



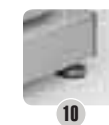
**Upright Assembly**  
Innovative design features 14 gauge uprights that allow you to add and adjust the shelving in 1" increments. Upright assembly also gives the shelving a clean contemporary look and added strength without compromising aisle space or storage capacity.



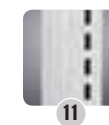
**Dozens of Options**  
Customize your storage solution from dozens of individual components, including Divider Units, Periodical Shelves, Multi-Media Display Shelves and Cabinets, Storage Trays, Corner Fillers, End Panels, and much more!



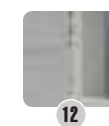
**European Styling**  
The Designer Series' styling is a blend of modular functionality and modern sophistication allowing you to create the ultimate look for your library.



**Superior Levelers**  
Adjustable levelers, combined with a welded 1/8" thick nut offers a tensile strength of 60,000 pounds per square inch to support the heaviest loads and provides stability.



**Easy Assembly**  
Rounded slots are featured at regular intervals on our uprights, greatly enhancing component installation by allowing for quick, accurate leveling and spacing.



**Expansion**  
Adding a new collection to your library? You have the freedom to add and reconfigure as your needs change.



## DESIGNER SERIES STARTER UNITS



**ESTEY**  
A DIVISION OF TENNSCO CORP.

### Single Face\*

Height	Levels	Shelf Depth	Base Depth	Catalog #	Height	Levels	Shelf Depth	Base Depth	Catalog #
42"	3	8"	8"	ED41080S	84"	7	8"	8"	ED81080S
		8"	10"	ED41082S			8"	10"	ED81082S
		9"	9"	ED41090S			9"	9"	ED81090S
		9"	10"	ED41091S			9"	10"	ED81091S
		10"	10"	ED41100S			10"	10"	ED81100S
66"	5	10"	12"	ED41102S	90"	7	10"	12"	ED81102S
		12"	12"	ED41120S			12"	12"	ED81120S
		8"	8"	ED61080S			8"	8"	ED91080S
		8"	10"	ED61082S			8"	10"	ED91082S
		9"	9"	ED61090S			9"	9"	ED91090S
78"	6	9"	10"	ED61091S	90"	7	9"	10"	ED91091S
		10"	10"	ED61100S			9"	10"	ED91091S
		10"	12"	ED61102S			10"	10"	ED91100S
		10"	12"	ED61120S			10"	12"	ED91102S
		12"	12"	ED61120S			12"	12"	ED91120S

\* All single face shelving must be wall anchored.

NOTE: When Adder Units are desired change the "S" in the catalog number to "A" (e.g. ED81080A).  
When 30" wide units are desired, add the number "3" to the catalog number (e.g. ED81080S3).  
When 24" wide units are desired, add the number "2" to the catalog number (e.g. ED81080S2).

### Double Face

Height	Levels	Shelf Depth	Base Depth	Catalog #	Height	Levels	Shelf Depth	Base Depth	Catalog #
42"	3	8"	8"	ED42080S	84"	7	8"	8"	ED82080S**
		8"	10"	ED42082S			8"	10"	ED82082S
		9"	9"	ED42090S			9"	9"	ED82090S**
		9"	10"	ED42091S			9"	10"	ED82091S
		10"	10"	ED42100S			10"	10"	ED82100S**
66"	5	10"	12"	ED42102S	90"	7	10"	12"	ED82102S
		12"	12"	ED42120S			12"	12"	ED82120S**
		8"	8"	ED62080S			8"	8"	ED92080S**
		8"	10"	ED62082S			8"	10"	ED92082S
		9"	9"	ED62090S			9"	9"	ED92090S**
78"	6	9"	10"	ED62091S	90"	7	9"	10"	ED92091S
		10"	10"	ED62100S			9"	10"	ED92091S
		10"	12"	ED62102S			10"	10"	ED92100S**
		10"	12"	ED62120S			10"	12"	ED92102S
		12"	12"	ED62120S			12"	12"	ED92120S**

NOTE: When Adder Units are desired change the "S" in the catalog number to "A" (e.g. ED82080A).  
When 30" wide units are desired, add the number "3" to the catalog number (e.g. ED82080S3).  
When 24" wide units are desired, add the number "2" to the catalog number (e.g. ED82080S2).

\*\* Overhead top bracing recommended.

## DESIGNER SERIES STARTER UNITS – DIVIDER TYPE

WITH FIVE ADJUSTABLE DIVIDERS PER SHELF



### Single Face\*

Height	Levels	Shelf Depth	Base Depth	Catalog #	Height	Levels	Shelf Depth	Base Depth	Catalog #
42"	3	10"	10"	DD41100S	84"	7	10"	10"	DD81100S
		10"	12"	DD41102S			10"	12"	DD81102S
		10"	13"	DD41103S			10"	13"	DD81103S
		12"	12"	DD41120S			12"	12"	DD81120S
		13"	13"	DD41130S			13"	13"	DD81130S
66"	5	13"	16"	DD41133S	90"	7	13"	16"	DD81133S
		10"	10"	DD61100S			10"	10"	DD91100S
		10"	12"	DD61102S			10"	12"	DD91102S
		10"	13"	DD61103S			10"	13"	DD91103S
		12"	12"	DD61120S			12"	12"	DD91120S
78"	6	13"	13"	DD61130S	90"	7	13"	13"	DD91130S
		13"	16"	DD61133S			13"	16"	DD91133S
		10"	10"	DD71100S			10"	10"	DD91100S
		10"	12"	DD71102S			10"	12"	DD91102S
		10"	13"	DD71103S			10"	13"	DD91103S
84"	7	12"	12"	DD71120S	90"	7	12"	12"	DD91120S
		13"	13"	DD71130S			13"	13"	DD91130S
		13"	16"	DD71133S			13"	16"	DD91133S

\* All single face shelving must be wall anchored.

NOTE: When Adder Units are desired change the "S" in the catalog number to "A" (e.g. DD81100A).  
When 30" wide units are desired, add the number "3" to the catalog number (e.g. DD81100S3).  
When 24" wide units are desired, add the number "2" to the catalog number (e.g. DD81100S2).

### Double Face

Height	Levels	Shelf Depth	Base Depth	Catalog #	Height	Levels	Shelf Depth	Base Depth	Catalog #
42"	3	10"	10"	DD42100S	84"	7	10"	10"	DD82100S**
		10"	12"	DD42102S			10"	12"	DD82102S
		10"	13"	DD42103S			10"	13"	DD82103S
		12"	12"	DD42120S			12"	12"	DD82120S**
		13"	13"	DD42130S			13"	13"	DD82130S**
66"	5	13"	16"	DD42133S	90"	7	13"	16"	DD82133S
		10"	10"	DD62100S			10"	10"	DD92100S**
		10"	12"	DD62102S			10"	12"	DD92102S
		10"	13"	DD62103S			10"	13"	DD92103S
		12"	12"	DD62120S			12"	12"	DD92120S**
78"	6	13"	13"	DD62130S	90"	7	13"	13"	DD92130S**
		13"	16"	DD62133S			13"	16"	DD92133S
		10"	10"	DD72100S**			10"	10"	DD92100S**
		10"	12"	DD72102S			10"	12"	DD92102S
		10"	13"	DD72103S			10"	13"	DD92103S
84"	7	12"	12"	DD72120S**	90"	7	12"	12"	DD92120S**
		13"	13"	DD72130S**			13"	13"	DD92130S**
		13"	16"	DD72133S			13"	16"	DD92133S

NOTE: When Adder Units are desired change the "S" in the catalog number to "A" (e.g. DD82100A).  
When 30" wide units are desired, add the number "3" to the catalog number (e.g. DD82100S3).  
When 24" wide units are desired, add the number "2" to the catalog number (e.g. DD82100S2).

\*\* Overhead top bracing recommended.

**ESTEY**  
A DIVISION OF TENNSCO CORP.



## DESIGNER SERIES INTEGRAL BACK UNITS

WITH ONE WIRE DIVIDER PER SHELF

### Single Face\*

Height	Levels	Shelf Depth	Base Depth	Catalog #	Height	Levels	Shelf Depth	Base Depth	Catalog #
42"	3	8"	8"	EDIB41080S	84"	7	8"	8"	EDIB81080S
		8"	10"	EDIB41082S			8"	10"	EDIB81082S
		9"	9"	EDIB41090S			9"	9"	EDIB81090S
		9"	10"	EDIB41091S			9"	10"	EDIB81091S
		10"	10"	EDIB41100S			10"	10"	EDIB81100S
		10"	12"	EDIB41102S			10"	12"	EDIB81102S
66"	5	8"	8"	EDIB61080S	90"	7	8"	8"	EDIB91080S
		8"	10"	EDIB61082S			8"	10"	EDIB91082S
		9"	9"	EDIB61090S			9"	9"	EDIB91090S
		9"	10"	EDIB61091S			9"	10"	EDIB91091S
		10"	10"	EDIB61100S			10"	10"	EDIB91100S
		10"	12"	EDIB61102S			10"	12"	EDIB91102S
78"	6	8"	8"	EDIB71080S	90"	7	8"	8"	EDIB91080S
		8"	10"	EDIB71082S			8"	10"	EDIB91082S
		9"	9"	EDIB71090S			9"	9"	EDIB91090S
		9"	10"	EDIB71091S			9"	10"	EDIB91091S
		10"	10"	EDIB71100S			10"	10"	EDIB91100S
		10"	12"	EDIB71102S			10"	12"	EDIB91102S

\* All single face shelving must be wall anchored.

NOTE: When Adder Units are desired change the "S" in the catalog number to "A" (e.g. EDIB81080A).  
When 30" wide units are desired, add the number "3" to the catalog number (e.g. EDIB81080S3).  
When 24" wide units are desired, add the number "2" to the catalog number (e.g. EDIB81080S2).

### Double Face

Height	Levels	Shelf Depth	Base Depth	Catalog #	Height	Levels	Shelf Depth	Base Depth	Catalog #
42"	3	8"	8"	EDIB42080S	84"	7	8"	8"	EDIB82080S**
		8"	10"	EDIB42082S			8"	10"	EDIB82082S
		9"	9"	EDIB42090S			9"	9"	EDIB82090S**
		9"	10"	EDIB42091S			9"	10"	EDIB82091S
		10"	10"	EDIB42100S			10"	10"	EDIB82100S**
		10"	12"	EDIB42102S			10"	12"	EDIB82102S
66"	5	8"	8"	EDIB62080S	90"	7	8"	8"	EDIB92080S**
		8"	10"	EDIB62082S			8"	10"	EDIB92082S
		9"	9"	EDIB62090S			9"	9"	EDIB92090S**
		9"	10"	EDIB62091S			9"	10"	EDIB92091S
		10"	10"	EDIB62100S			10"	10"	EDIB92100S**
		10"	12"	EDIB62102S			10"	12"	EDIB92102S
78"	6	8"	8"	EDIB72080S**	90"	7	8"	8"	EDIB92080S**
		8"	10"	EDIB72082S			8"	10"	EDIB92082S
		9"	9"	EDIB72090S**			9"	9"	EDIB92090S**
		9"	10"	EDIB72091S			9"	10"	EDIB92091S
		10"	10"	EDIB72100S**			10"	10"	EDIB92100S**
		10"	12"	EDIB72102S			10"	12"	EDIB92102S

NOTE: When Adder Units are desired change the "S" in the catalog number to "A" (e.g. EDIB82080A).  
When 30" wide units are desired, add the number "3" to the catalog number (e.g. EDIB82080S3).  
When 24" wide units are desired, add the number "2" to the catalog number (e.g. EDIB82080S2).

\*\* Overhead top bracing recommended.

## PERIODICAL DISPLAY UNITS

### Single Face\*

Sloping periodical shelving with flat storage shelf.  
With 12" storage shelves & 12" base. Periodical surface is 14" high.

#### STARTER UNIT

Width	Height	Sloping Shelves	Storage Levels	Catalog #
30"	42"	3	3	DP41120S3
	66"	4	4	DP61120S3
	78"	5	5	DP71120S3
	84"	6	6	DP81120S3
36"	42"	3	3	DP41120S
	66"	4	4	DP61120S
30"	42"	3	3	DP41120A3
	66"	4	4	DP61120A3
	78"	5	5	DP71120A3
	84"	6	6	DP81120A3
36"	42"	3	3	DP41120A
	66"	4	4	DP61120A
30"	42"	3	3	DP41120S3
	66"	4	4	DP61120S3
	78"	5	5	DP71120S3
	84"	6	6	DP81120S3
36"	42"	3	3	DP41120S
	66"	4	4	DP61120S
30"	42"	3	3	DP41120A3
	66"	4	4	DP61120A3
	78"	5	5	DP71120A3
	84"	6	6	DP81120A3
36"	42"	3	3	DP41120A
	66"	4	4	DP61120A

#### ADDER UNIT

Width	Height	Sloping Shelves	Storage Levels	Catalog #
30"	42"	3	3	DP41120A3
	66"	4	4	DP61120A3
	78"	5	5	DP71120A3
	84"	6	6	DP81120A3
36"	42"	3	3	DP41120A
	66"	4	4	DP61120A
30"	42"	3	3	DP41120S3
	66"	4	4	DP61120S3
	78"	5	5	DP71120S3
	84"	6	6	DP81120S3
36"	42"	3	3	DP41120S
	66"	4	4	DP61120S
30"	42"	3	3	DP41120A3
	66"	4	4	DP61120A3
	78"	5	5	DP71120A3
	84"	6	6	DP81120A3
36"	42"	3	3	DP41120A
	66"	4	4	DP61120A

\* All single face shelving must be wall anchored.  
24" wide units are also available.  
Contact factory for details.

### Double Face

Sloping periodical shelving with flat storage shelf.  
With 12" storage shelves & 12" base. Periodical surface is 14" high.

#### STARTER UNIT

Width	Height	Sloping Shelves	Storage Levels	Catalog #
30"	42"	6	6	DP42120S3
	66"	8	8	DP62120S3
	78"	10	10	DP72120S3
	84"	12	12	DP82120S3
36"	42"	6	6	DP42120S
	66"	8	8	DP62120S
30"	42"	6	6	DP42120A3
	66"	8	8	DP62120A3
	78"	10	10	DP72120A3
	84"	12	12	DP82120A3
36"	42"	6	6	DP42120A
	66"	8	8	DP62120A
30"	42"	6	6	DP42120S3
	66"	8	8	DP62120S3
	78"	10	10	DP72120S3
	84"	12	12	DP82120S3
36"	42"	6	6	DP42120S
	66"	8	8	DP62120S
30"	42"	6	6	DP42120A3
	66"	8	8	DP62120A3
	78"	10	10	DP72120A3
	84"	12	12	DP82120A3
36"	42"	6	6	DP42120A
	66"	8	8	DP62120A

#### ADDER UNIT

Width	Height	Sloping Shelves	Storage Levels	Catalog #
30"	42"	6	6	DP42120A3
	66"	8	8	DP62120A3
	78"	10	10	DP72120A3
	84"	12	12	DP82120A3
36"	42"	6	6	DP42120A
	66"	8	8	DP62120A
30"	42"	6	6	DP42120S3
	66"	8	8	DP62120S3
	78"	10	10	DP72120S3
	84"	12	12	DP82120S3
36"	42"	6	6	DP42120S
	66"	8	8	DP62120S
30"	42"	6	6	DP42120A3
	66"	8	8	DP62120A3
	78"	10	10	DP72120A3
	84"	12	12	DP82120A3
36"	42"	6	6	DP42120A
	66"	8	8	DP62120A

\*\* Overhead top bracing recommended.

# ESTEY

A DIVISION OF TENNSCO CORP.

## WELDED UPRIGHTS

### Single Entry

Height	Depth	Catalog Number	Height	Depth	Catalog Number
42"	8"	EDSUPT4208A	84"	8"	EDSUPT8408A
	9"	EDSUPT4209A		9"	EDSUPT8409A
	10"	EDSUPT4210A		10"	EDSUPT8410A
	11"	EDSUPT4211A		11"	EDSUPT8411A
	12"	EDSUPT4212A		12"	EDSUPT8412A
	13"	EDSUPT4213A		13"	EDSUPT8413A
66"	16"	EDSUPT4216A	90"	16"	EDSUPT8416A
	8"	EDSUPT6608A		8"	EDSUPT9008A
	9"	EDSUPT6609A		9"	EDSUPT9009A
	10"	EDSUPT6610A		10"	EDSUPT9010A
	11"	EDSUPT6611A		11"	EDSUPT9011A
	12"	EDSUPT6612A		12"	EDSUPT9012A
78"	13"	EDSUPT6613A	16"	13"	EDSUPT9013A
	16"	EDSUPT6616A		16"	EDSUPT9016A
	8"	EDSUPT7808A			
	9"	EDSUPT7809A			
	10"	EDSUPT7810A			
	11"	EDSUPT7811A			
12"	EDSUPT7812A				
13"	EDSUPT7813A				
16"	EDSUPT7816A				

### Double Entry

Height	Depth	Catalog Number	Height	Depth	Catalog Number
42"	16"	EDDUPT4208A	84"	16"	EDDUPT8408A
	18"	EDDUPT4209A		18"	EDDUPT8409A
	20"	EDDUPT4210A		20"	EDDUPT8410A
	22"	EDDUPT4211A		22"	EDDUPT8411A
	24"	EDDUPT4212A		24"	EDDUPT8412A
	26"	EDDUPT4213A		26"	EDDUPT8413A
	32"	EDDUPT4216A		32"	EDDUPT8416A
	66"	16"		EDDUPT6608A	90"
18"		EDDUPT6609A	18"	EDDUPT9009A	
20"		EDDUPT6610A	20"	EDDUPT9010A	
22"		EDDUPT6611A	22"	EDDUPT9011A	
24"		EDDUPT6612A	24"	EDDUPT9012A	
26"		EDDUPT6613A	26"	EDDUPT9013A	
32"		EDDUPT6616A	32"	EDDUPT9016A	
78"		16"	EDDUPT7808A		
	18"	EDDUPT7809A			
	20"	EDDUPT7810A			
	22"	EDDUPT7811A			
	24"	EDDUPT7812A			
	26"	EDDUPT7813A			
	32"	EDDUPT7816A			

## UPRIGHTS & ACCESSORIES

### Post Caps



Post caps are available in black, white, grey and champagne.

Size	Catalog Number
1 1/2" x 2 1/2"	DSCAP
1 1/2" x 2 1/2"	DSCAPW
1 1/2" x 2 1/2"	DSCAPG
1 1/2" x 2 1/2"	DSCAPC

### Overhead Top Bracing



Channel construction top tie furnished in 8' lengths. Recommended for added stabilization when bases are of equal depths.

Width x Depth	Catalog Number
2" x 96"	OTBW9

### Top Struts



Used to connect two uprights.

Width	Catalog Number
24"	DSTRUT24
30"	DSTRUT30
36"	DSTRUT36

### Kick Plate



Prevents items from rolling beneath shelves.

Width	Catalog Number
24"	DKP24
30"	DKP30
36"	DKP36

### Wall Hung Columns



Slotted strip attaches to wall. Designed to accept all components or accessory items. Special heights are available. Hardware not included due to a variety of possible wall construction scenarios.

Height	Catalog Number
24"	DPILWCH24
30"	DPILWCH30
42"	DPILWCH42
54"	DPILWCH54
60"	DPILWCH60
66"	DPILWCH66
72"	DPILWCH72
78"	DPILWCH78
84"	DPILWCH84
90"	DPILWCH90

### Upright Extender



Add to existing frames for more space. Available in a variety of sizes with a 12" minimum. Contact factory for sizes not shown.

Height	Catalog Number
18"	DUPTXT18A
24"	DUPTXT24A
30"	DUPTXT30A
Varies	DUPTXTxxA



## SPECIALTY SHELVES



### Periodical Display Shelves

Sloped for display. Periodical surface is 14" high.

Size	Catalog Number*	Size	Catalog Number*
36"w x 12"d	DPDS3612A	36"w x 12"d	DPDS3612ACLH+

#### WITH PLEXIGLASS COVER

Size	Catalog Number*	
36"w x 12"d	DPDSCA	+ Includes continuous label holder.



### Sloped Display Shelves

Sloped for display. Fixed or pivotal option. Periodical surface is 12" high.

Size	Catalog Number*	Size	Catalog Number*
36"w x 12"d	SDS3612A	36"w x 12"d	SDS3612ACLH+

#### WITH PLEXIGLASS COVER

Size	Catalog Number*	
36"w x 12"d	SDSCA	+ Includes continuous label holder.



### Princeton File Box

Displays periodicals while allowing for storage of back issues

Size	Catalog Number*	
36"w x 16"d x 16"w	KDPRBOXA	
36"w x 16"d x 16"w	KDPRBOX1PA+	+ with Plexiglass front



### Two, Three and Four-Tier Magazine Racks

Displays magazines on multiple tiers.

	Size	Catalog Number*
<b>2-TIER</b>	36"w x 8"d x 12"h	MTMR-36-2
<b>3-TIER</b>	36"w x 11"d x 16"h	MTMR-36-3
<b>4-TIER</b>	36"w x 13"d x 19"h	MTMR-36-4



## SPECIALTY SHELVES



### Adjustable Shelves

Includes brackets.

Size	Catalog Number*	Size	Catalog Number*
36"w x 8"d	ED3608A	36"w x 9"d	ED3609A
36"w x 10"d	ED3610A	36"w x 11"d	ED3611A
36"w x 12"d	ED3612A	36"w x 13"d	ED3613A
36"w x 14"d	ED3614A	36"w x 16"d	ED3616A



### Integral Back Shelves

Built-in 2" backstop keeps items organized. Includes brackets and one wire divider per shelf.

Size	Catalog Number*	Size	Catalog Number*
36"w x 8"d	DBLIB3608A	36"w x 12"d	DBLIB3612A
36"w x 9"d	DBLIB3609A	36"w x 13"d	DBLIB3613A
36"w x 10"d	DBLIB3610A	36"w x 16"d	DBLIB3616A
36"w x 11"d	DBLIB3611A		



### Video Cassette/Paperback Book Shelf

Slopes to allow convenient viewing of spines on paperbacks and video cassettes.

WITH SLOTS FOR DIVIDERS		WITHOUT SLOTS FOR DIVIDERS	
Size	Catalog Number*	Size	Catalog Number*
36"w x 9"d	DDVCS3609A	36"w x 9"d	DVCS3609A
36"w x 10"d	DDVCS3610A	36"w x 10"d	DVCS3610A
36"w x 12"d	DDVCS3612A	36"w x 12"d	DVCS3612A



### One-Piece Divider Shelf With Back

Built-in backstop keeps items organized. Comes with five standard size dividers.

Size	Catalog Number*	Size	Catalog Number*
36"w x 9"d	DDS3609A	36"w x 9"d	DDS3613A
36"w x 10"d	DDS3610A	36"w x 10"d	DDS3616A
36"w x 12"d	DDS3612A		



### Sliding Reference Shelf

Sturdy full extension slides attach to underside of adjustable shelf. Use two reference shelves for double face units

Size	Catalog Number*	Size	Catalog Number*
36"w x 8"d	DSRS3608A	36"w x 9"d	DSRS3609A
36"w x 10"d	DSRS3610A	36"w x 12"d	DSRS3612A

# ESTEY

A DIVISION OF TENNSCO CORP.

\* For 24" or 30" wide items, change 36" in catalog number to 24" or 30" (e.g. DPDS2412A, DPDS3012A, etc.)  
Note: All dimensions are nominal.

\* For 24" or 30" wide items, change 36" in catalog number to 24" or 30" (e.g. DSRS2410A, DSRS3010A, etc.) • Note: All dimensions are nominal.



## SPECIALTY SHELVES



### Metal Browsing Box

Ideal for storing all media items. Includes 5 dividers.

Size	Catalog Number*
36"w x 12"d x 6"h	HDBRB3611A
36"w x 15"d x 6"h	HDBRB3614A



### Pullout Browsing Box

Ideal for storing all media items in a high capacity environment. Multiple boxes can be placed on top of one another while retaining accessibility to stored items.

Size	Catalog Number*
36"w x 12"d x 6"h	XHDBRB3611A
36"w x 15"d x 6"h	XHDBRB3614A

24" and 30" sizes also available; contact factory for details.



### Double Tier Browsing Box

Two levels of storage for all media items. Holds 168 cassette tapes, 56VHS videotapes, or 156 compact discs. Includes 10 dividers.

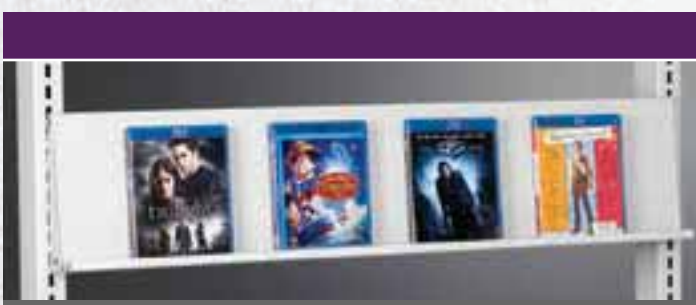
Size	Catalog Number*
36"w x 16"d x 8"h	DTBRB36A



### Multimedia Divider Shelf

Ideal for storing all media items. Media can be stacked vertically, retaining visual access to all spine information.

Size	Catalog Number*
36"w x 16"d x 14"h	MMS36A



### Face Out Display Shelf

One-piece display shelf. Ideal for displaying DVD or Blu-ray videos.

Size	Catalog Number*
36"w x 3"d x 8"h	FOD5A

## ACCESSORIES



### Zig-Zag Shelf

Adjustable shelf with paperback insert. Ideal for displaying audio cassettes or paperback books.

Size	Catalog Number
24"w x 8"d	DZZ2408A
30"w x 8"d	DZZ3008A
36"w x 8"d	DZZ3608A

**Insert Only**  
ZZPD



### Media Hanger Rack

Consists of brackets with hanger rod for clear-view plastic media bags of various sizes.

Size	Catalog Number
24"w x 7"d x 5"h	HB24A
30"w x 7"d x 5"h	HB30A
36"w x 7"d x 5"h	HB36A



### Shelf Filler

Fills the space between adjustable shelves on double sided units, providing a continuous surface. Attaches with two clips that fasten to underside of shelves.

Size	Catalog Number
21"w x 3"d x 1"h	SHFIL24
27"w x 3"d x 1"h	SHFIL30
33"w x 3"d x 1"h	SHFIL36

\* For 24" or 30" wide items, change 36" in catalog number to 24" or 30" (e.g. HDBRB2411A, HDBRB3011A, etc.)  
Note: All dimensions are nominal.

NOTE: All dimensions are nominal.

## ACCESSORIES



### Backstop & Wire Divider

One side is a regular backstop. The other is a sliding support backstop (when used with optional wire divider).

Size	Catalog Number
24" w x 2" h	RBS24SP
30" w x 2" h	RBS30SP
36" w x 2" h	RBS36SP
<b>Wire Divider Only</b>	
BSWBS	



### Offset Center Backstop – Low Profile

Works as a backstop for each side of a double entry unit, eliminating the need for an individual backstop for each side.

Size	Catalog Number
24" w x 2" h	CBSS24
30" w x 2" h	CBSS30
36" w x 2" h	CBSS36

## ACCESSORIES



### Steel Book Supports

Unattached book support used on surface of shelves. Furnished with cork backing or a magnetic strip.

#### WITH CORK BACKING

Height	Catalog Number
6"	BSN6
9"	BSN9

#### WITH MAGNETIC STRIP

Height	Catalog Number
6"	BSM6
9"	BSM9



### Wire Book Supports

Choose from four different wire book supports. Each attaches to underside of shelf and is easily adjustable.

Size	Catalog Number
7" h x 10" d	WBSW7 (not shown)
9" h x 12" d	WBSW9
6" h x 10" d	WBS6
9" h x 12" d	WBS9



## ACCESSORIES



### Canopy Brackets For Wood Tops

Used when wood or hard plastic canopy tops are used. For single face units, use one pair. For double face units, use two pairs. Each pair consists of one left and one right bracket and hardware. Wood top not included.

Size	Catalog Number
8"d	DCTIB08S (one pair)
12"d	DCTIB12S (one pair)



### Steel Canopy Tops

Keeps dust off your valuable materials. Includes attaching brackets.

SINGLE FACE		DOUBLE FACE	
Size	Catalog Number*	Size	Catalog Number*
36"w x 8"d	DCTS3608	36"w x 16"d	DCTD3616
36"w x 9"d	DCTS3609	36"w x 18"d	DCTD3618
36"w x 10"d	DCTS3610	36"w x 20"d	DCTD3620
36"w x 12"d	DCTS3612	36"w x 24"d	DCTD3624
36"w x 13"d	DCTS3613	36"w x 26"d	DCTD3626
36"w x 16"d	DCTS3616		



### Wall Clip

Used to attach single face units to the wall for support.

Size	Catalog Number
3"w x 2"d x 1"h	WCLIP



### Panel Bracket

Used to attach decorative wood or laminate end panels to unit uprights.

Size	Catalog Number
3/4"d x 3 9/16"h	DSPB

A Stylish, Easy Installation



Strath Haven Middle School Library, Wallingford, PA | Architecture by Agoos/Lovera Architects, Philadelphia, PA

**ESTEY**

A DIVISION OF TENNSCO CORP.



## OPTIONS

### Steel End Panels and Backs

#### SINGLE FACE END PANELS

Height	Base Depth	Catalog Number*	Height	Base Depth	Catalog Number*
42"	8"	DSP4208LA	84"	8"	DSP8408LA
	9"	DSP4209LA		9"	DSP8409LA
	10"	DSP4210LA		10"	DSP8410LA
	12"	DSP4212LA		12"	DSP8412LA
	13"	DSP4213LA		13"	DSP8413LA
	16"	DSP4216LA	16"	DSP8416LA	
66"	8"	DSP6608LA	90"	8"	DSP8408LA
	9"	DSP6609LA		9"	DSP8409LA
	10"	DSP6610LA		10"	DSP8410LA
	12"	DSP6612LA		12"	DSP8412LA
	13"	DSP6613LA		13"	DSP8413LA
	16"	DSP6616LA	16"	DSP8416LA	
78"	8"	DSP7808LA	* For right side end panels, change LA in catalog number to RA (e.g. DSP4208RA, etc.)		
	9"	DSP7809LA			
	10"	DSP7810LA			
	12"	DSP7812LA			
	13"	DSP7813LA			
	16"	DSP7816LA			

#### DOUBLE FACE END PANELS

Height	Base Depth	Catalog Number	Height	Base Depth	Catalog Number
42"	16"	DDP4216A	84"	16"	DDP8416A
	18"	DDP4218A		18"	DDP8418A
	20"	DDP4220A		20"	DDP8420A
	24"	DDP4222A		24"	DDP8422A
	26"	DDP4226A		26"	DDP8426A
	32"	DDP4232A		32"	DDP8432A
66"	16"	DDP6616A	90"	16"	DDP8416A
	18"	DDP6618A		18"	DDP8418A
	20"	DDP6620A		20"	DDP8420A
	24"	DDP6622A		24"	DDP8422A
	26"	DDP6626A		26"	DDP8426A
	32"	DDP6632A		32"	DDP8432A
78"	16"	DDP7816A			
	18"	DDP7818A			
	20"	DDP7820A			
	24"	DDP7822A			
	26"	DDP7826A			
	32"	DDP7832A			

#### STEEL BACKS

Size	Catalog Number	Size	Catalog Number
30"w x 42"h	DNB3042A	36"w x 42"h	DNB3642A
30"w x 66"h	DNB3066A	36"w x 66"h	DNB3666A
30"w x 78"h	DNB3078A	36"w x 78"h	DNB3678A
30"w x 84"h	DNB3084A	36"w x 84"h	DNB3684A
30"w x 90"h	DNB3090A	36"w x 90"h	DNB3690A

24" wide backs are also available. Contact factory for details.

## OPTIONS

### Corner Fillers



Used to make a corner for units placed at right angles to each other. Available in all heights and depths. Specify height and depth (*hhdd*) when ordering. Over 90" high contact factory.

**Heights** 42" to 90"  
**Catalog Number** SCFhhddA

**Depths** 08" to 15"

### Intermediate Wall Fillers



Used to fill a void where two single faced units are joined at a right angle with a double faced unit. Available for all base shelf depths and frame heights. Specify height and depth (*hhdd*) when ordering. Over 90" high contact factory.

**Heights** 42" to 90"  
**Catalog Number** DCFhhddA

**Depths** 08" to 32"

# ESTEY

A DIVISION OF TENNSCO CORP.