

Hemp a - J - White Cherry Soda

Sample ID: Produced: Client  
Strain: White Cherry Soda Collected: 10/04/2024  
Matrix: Plant Received: 10/04/2024  
Type: Flower - Cured Completed: 01/30/2025  
Sample Size: ; Batch: Batch#:



Summary

Test	Date Tested	Result
Batch		Complete
Cannabinoids	10/04/2024	Complete
Moisture	10/07/2024	13.91%

Cannabinoids

Complete

27.00%	ND	27.00%
Total THC	Total CBD	Total Cannabinoids

Analyte	LOD	LOQ	Result	Result
	mg/g	mg/g	%	mg/g
THCa	0.20000	0.61000	30.47	304.65
Δ9-THC	0.15000	0.45000	0.28	2.83
Δ8-THC	0.14000	0.42000	ND	ND
THCV	0.15000	0.44000	ND	ND
CBDa	0.10000	0.31000	ND	ND
CBD	0.15000	0.45000	ND	ND
CBN	0.16000	0.50000	ND	ND
CBG	0.13000	0.39000	ND	ND
CBC	0.14000	0.42000	ND	ND
Total THC			27.00	270.01
Total CBD			ND	ND
Total			27.00	270.01
Sum of Cannabinoids			30.75	307.48

Determination of Cannabinoids by HPLC, HL223  
Total THC = Δ9-THCa \* 0.877 + Δ9-THC  
Total CBD = CBDa \* 0.877 + CBD  
ND = Not Detected; NR = Not Reported; LOD = Limit of Detection; The reported result is based on a sample weight with the applicable moisture content for that sample; Unless otherwise stated all quality control samples performed within specifications established by the Laboratory. HL105.10-01. Cannabinoid Testing: Pass/Fail decision determined by Department of Cannabis Control CCR title 4 Division 19 §15724. Water activity testing: Pass/Fail decision determined by Department of Cannabis Control CCR title 4 Division 19 §15717.



*Ming Li*  
Ming Li - General Manager  
01/30/2025

Confident LIMS  
All Rights Reserved  
coa.support@confidentlims.com  
(866) 506-5866  
www.confidentlims.com

ISO 17025 accredited by A2LA (Certificate No. 4074.01 & 4074.02). Sampling Procedure: SOP HL 110.2; Foreign Material: UV light/Microscope SOP HL 323, SOP HL 324; Water Activity: Water Activity Meter SOP HL 238; Moisture: Drying Oven SOP HL217.1; All LQC ran in accordance with 4 CCR sec. 15730. This product has been tested by Harrens Lab Inc. using valid testing methodologies and a quality system as required by state law. Values reported relate only to the product tested. Harrens Lab Inc. makes no claims as to the efficacy, safety or other risks associated with any detected or non-detected levels of any compounds contained herein. This Certificate shall not be used for any other purpose.



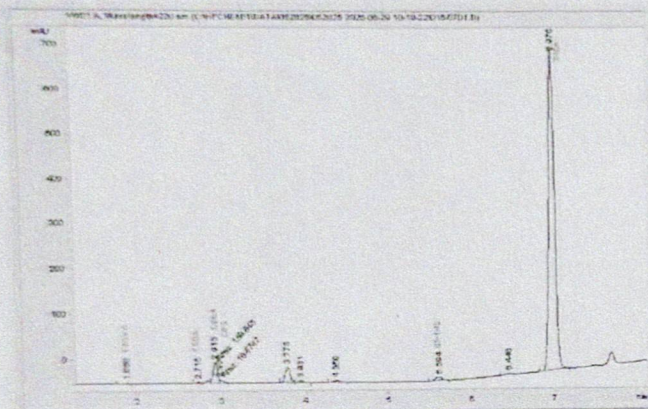
## Illuminati - Hemp

Sample Submitted: 05-28-2025; Report Date: 06-04-2025

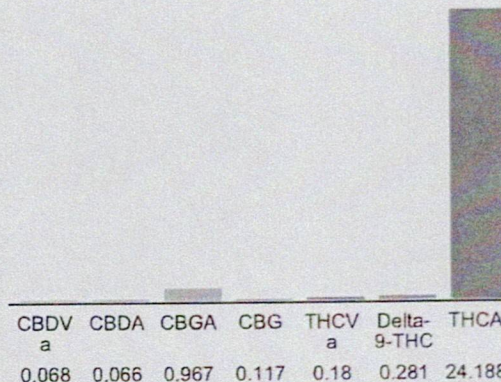
# Illuminati - Hemp

Plant Material: Hemp Flower

## Chromatogram



### Cannabinoid Profile



## Cannabinoid Profile by HPLC

0.28%

Delta-9-THC

0.00%

CBD

25.87%

### Total Cannabinoids

<b>Cannabinoid</b>	<b>% wt</b>	<b>mg/g</b>
CBDVa	0.068	0.68
CBDA	0.066	0.66
CBGA	0.967	9.67
CBG	0.117	1.17
THCVa	0.18	1.8
Delta-9-THC	0.281	2.81
THCA	24.19	241.88
<b>Total Cannabinoids</b>	<b>25.87</b>	<b>258.7</b>
<b>Calculated Total THC</b>	<b>21.49</b>	<b>214.94</b>
<b>Calculated CBD Yield</b>	<b>0.06</b>	<b>0.58</b>

$$\text{Calculated Total THC} = \text{Delta-9-THC} + 0.877 * \text{THCA}$$
$$\text{Calculated Maximum CBD Yield} = \text{CBD} + 0.877 \cdot \text{CBDA}$$

**Marin Analytics, LLC**  
250 Bel Marin Keys Blvd, Suite D4  
Novato, CA 94949

833-321-TEST / [info@marinanalytics.com](mailto:info@marinanalytics.com)

Mike Clemmons  
Lab Manager

This sample has been tested by Marin Analytics, LLC using valid testing methodologies and a quality system. Values reported relate only to the sample tested. Marin Analytics, LLC makes no claims as to the efficacy, safety, or other risks associated with any detected or non-detected levels of any compounds reported herein. This Certificate shall not be reproduced except in full without the written approval of Marin Analytics, LLC. Copyright 2023 Marin Analytics, LLC All Rights Reserved.

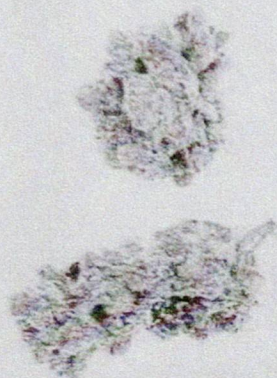


## Certificate of Analysis

For R&D Use Only - Not a California Compliance Certificate

# OREOZ

Total CBD	ND
Total THC	23.98 %
Total Cannabinoids	27.32 %



Sample Name:

OREOZ

Matrix:

Plant

Unit Mass:

1 g per unit

Date Received:

6/5/2024

*Marie*

Approved By:

Marie True, M.S.

Laboratory Manager

This certificate of analysis is responsible for the tested sample only and is for research and development (R&D) use only. This certificate of analysis shall not be reproduced, except in its entirety, without the written approval of FESA Labs. FESA Labs shall not be liable for any damage that may result from the data contained herein in any way. FESA Labs makes no claim to the efficacy, safety or other risks associated with any detected or non-detected amounts of any substances reported herein. If there are any questions with this report please email [info@fesalabs.com](mailto:info@fesalabs.com). This certificate of analysis is intended only for the use of the party to whom it is addressed and may contain information that is confidential or protected from disclosure under applicable law. If you have received this document in error, please immediately contact us.

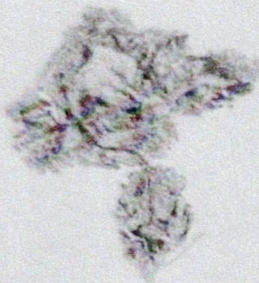
References: limit of detection (LOD), limit of quantitation (LOQ), not detected (ND), not tested (NT)



## Certificate of Analysis

For R&D Use Only - Not a California Compliance Certificate

# Gusher



Total CBD	ND
Total THC	27.45 %
Total Cannabinoids	31.29 %

**Sample Name:**

Gusher

**Matrix:**

Plant

**Unit Mass:**

1 g per unit

**Date Received:**

4/25/2024

*Marie*

Approved By:

Marie True, M.S.

Laboratory Manager

This certificate of analysis is responsible for the tested sample only and is for research and development (R&D) use only. This certificate of analysis shall not be reproduced, except in its entirety, without the written approval of FESA Labs. FESA Labs shall not be liable for any damage that may result from the data contained herein in any way. FESA Labs makes no claim to the efficacy, safety or other risks associated with any detected or non-detected amounts of any substances reported herein. If there are any questions with this report please email [info@fesalabs.com](mailto:info@fesalabs.com). This certificate of analysis is intended only for the use of the party to whom it is addressed and may contain information that is confidential or protected from disclosure under applicable law. If you have received this document in error, please immediately contact us.

**References:** limit of detection (LOD), limit of quantitation (LOQ), not detected (ND), not tested (NT)