

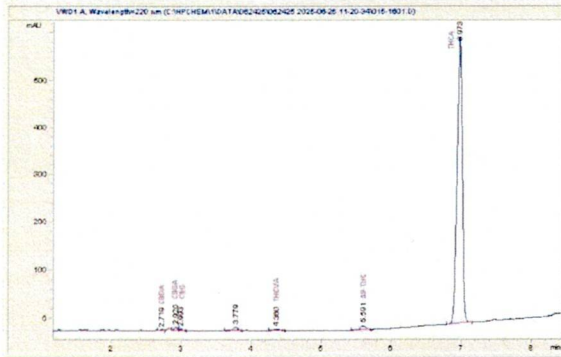
Hemp - OOH LA LA

Sample Submitted: 06-24-2025; Report Date: 07-01-2025

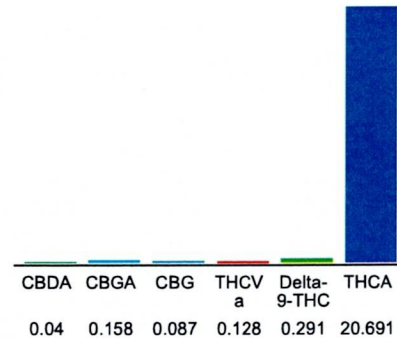
Hemp - OOH LA LA

Plant Material: Hemp Flower

Chromatogram



Cannabinoid Profile



Cannabinoid Profile by HPLC

0.29%

Delta-9-THC

0.00%

CBD

21.40%

Total Cannabinoids

Cannabinoid	% wt	mg/g
CBDA	0.04	0.4
CBGA	0.158	1.58
CBG	0.087	0.87
THCVa	0.128	1.28
Delta-9-THC	0.291	2.91
THCA	20.69	206.91
Total Cannabinoids	21.40	214.0
Calculated Total THC	18.44	184.37
Calculated CBD Yield	0.04	0.35

Calculated Total THC = Delta-9-THC + 0.877 * THCA

Calculated Maximum CBD Yield = CBD + 0.877 * CBDA

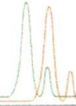
Marin Analytics, LLC

250 Bel Marin Keys Blvd, Suite D4
Novato, CA 94949

833-321-TEST / info@marinanalytics.com

Mike Clemmons
Lab Manager

This sample has been tested by Marin Analytics, LLC using valid testing methodologies and a quality system. Values reported relate only to the sample tested. Marin Analytics, LLC makes no claims as to the efficacy, safety, or other risks associated with any detected or non-detected levels of any compounds reported herein. This Certificate shall not be reproduced except in full without the written approval of Marin Analytics, LLC. Copyright 2023 Marin Analytics, LLC All Rights Reserved.



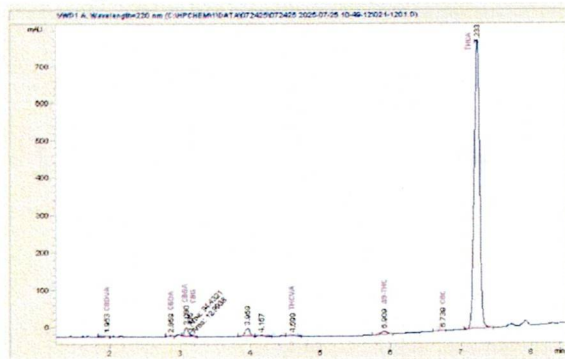
Kush Krasher

Sample Submitted: 07-24-2025; Report Date: 07-25-2025

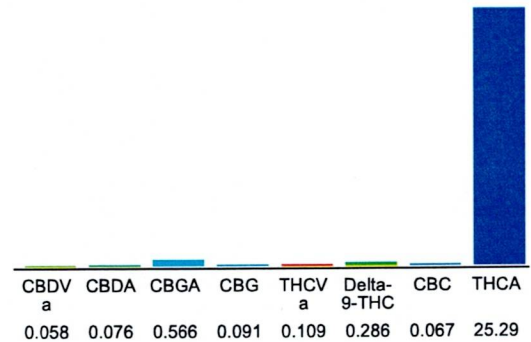
Kush Crasher

Plant Material: Hemp Flower

Chromatogram



Cannabinoid Profile



Cannabinoid Profile by HPLC

0.29%

Delta-9-THC

0.00%

CBD

26.54%

Total Cannabinoids

Cannabinoid	% wt	mg/g
CBDVa	0.058	0.58
CBDA	0.076	0.76
CBGA	0.566	5.66
CBG	0.091	0.91
THCVa	0.109	1.09
Delta-9-THC	0.286	2.86
CBC	0.067	0.67
THCA	25.29	252.9
Total Cannabinoids	26.54	265.4
Calculated Total THC	22.47	224.65
Calculated CBD Yield	0.07	0.67
Calculated Total THC = Delta-9-THC + 0.877 * THCA		
Calculated Maximum CBD Yield = CBD + 0.877 * CBDA		

Marin Analytics, LLC
250 Bel Marin Keys Blvd, Suite D4
Novato, CA 94949

833-321-TEST / info@marinanalytics.com

Mike Clemmons
Lab Manager

This sample has been tested by Marin Analytics, LLC using valid testing methodologies and a quality system. Values reported relate only to the sample tested. Marin Analytics, LLC makes no claims as to the efficacy, safety, or other risks associated with any detected or non-detected levels of any compounds reported herein. This Certificate shall not be reproduced except in full without the written approval of Marin Analytics, LLC. Copyright 2023 Marin Analytics, LLC All Rights Reserved.



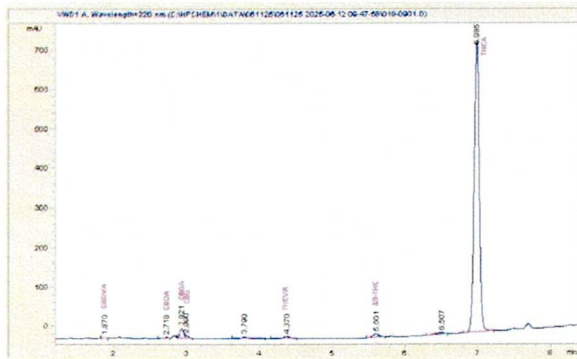
Black Amber

Sample Submitted: 06-11-2025; Report Date: 06-12-2025

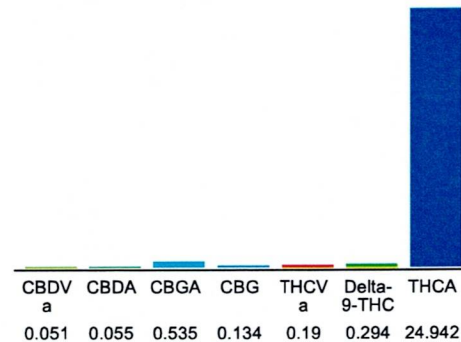
Black Amber

Plant Material: Hemp Flower

Chromatogram



Cannabinoid Profile



Cannabinoid Profile by HPLC

0.29%

Delta-9-THC

0.00%

CBD

26.20%

Total Cannabinoids

Cannabinoid	% wt	mg/g
CBDVa	0.051	0.51
CBDA	0.055	0.55
CBGA	0.535	5.35
CBG	0.134	1.34
THCVa	0.19	1.9
Delta-9-THC	0.294	2.94
THCA	24.94	249.42
Total Cannabinoids	26.20	262.0
Calculated Total THC	22.17	221.68
Calculated CBD Yield	0.05	0.48

Calculated Total THC = Delta-9-THC + 0.877 * THCA

Calculated Maximum CBD Yield = CBD + 0.877 * CBDA

Marin Analytics, LLC
250 Bel Marin Keys Blvd, Suite D4
Novato, CA 94949

833-321-TEST / info@marinanalytics.com

Mike Clemmons
Lab Manager

This sample has been tested by Marin Analytics, LLC using valid testing methodologies and a quality system. Values reported relate only to the sample tested. Marin Analytics, LLC makes no claims as to the efficacy, safety, or other risks associated with any detected or non-detected levels of any compounds reported herein. This Certificate shall not be reproduced except in full without the written approval of Marin Analytics, LLC. Copyright 2023 Marin Analytics, LLC All Rights Reserved.



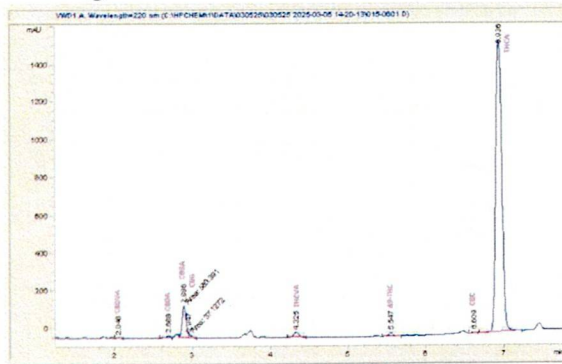
Jungle Juice

Sample Submitted: 03-05-2025; Report Date: 03-07-2025

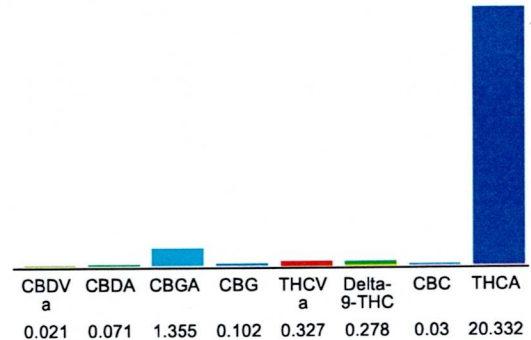
Jungle Juice

Plant Material: Hemp Flower

Chromatogram



Cannabinoid Profile



Cannabinoid Profile by HPLC

0.28%

Delta-9-THC

0.00%

CBD

22.52%

Total Cannabinoids

Cannabinoid	% wt	mg/g
CBDVa	0.021	0.21
CBDA	0.071	0.71
CBGA	1.355	13.55
CBG	0.102	1.02
THCVa	0.327	3.27
Delta-9-THC	0.278	2.78
CBC	0.03	0.3
THCA	20.33	203.32
Total Cannabinoids	22.52	225.2
Calculated Total THC	18.11	181.09
Calculated CBD Yield	0.06	0.62
Calculated Total THC = Delta-9-THC + 0.877 * THCA		
Calculated Maximum CBD Yield = CBD + 0.877 * CBDA		

Marin Analytics, LLC
250 Bel Marin Keys Blvd, Suite D4
Novato, CA 94949

833-321-TEST / info@marinanalytics.com

Mike Clemmons
Lab Manager

This sample has been tested by Marin Analytics, LLC using valid testing methodologies and a quality system. Values reported relate only to the sample tested. Marin Analytics, LLC makes no claims as to the efficacy, safety, or other risks associated with any detected or non-detected levels of any compounds reported herein. This Certificate shall not be reproduced except in full without the written approval of Marin Analytics, LLC. Copyright 2023 Marin Analytics, LLC All Rights Reserved.



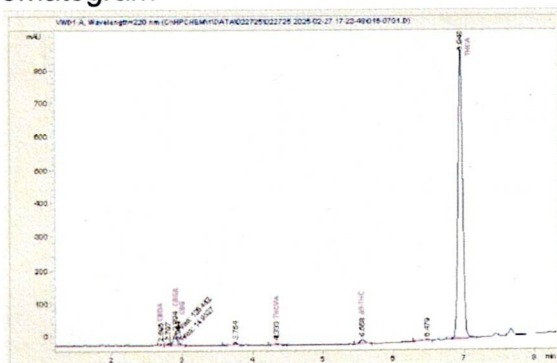
Jelly Roll - Hemp

Sample Submitted: 02-27-2025; Report Date: 03-03-2025

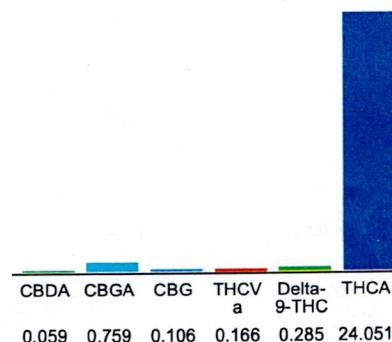
Jelly Roll - Hemp

Plant Material: Hemp Flower

Chromatogram



Cannabinoid Profile



Cannabinoid Profile by HPLC

0.29%

Delta-9-THC

0.00%

CBD

25.43%

Total Cannabinoids

Cannabinoid	% wt	mg/g
CBDA	0.059	0.59
CBGA	0.759	7.59
CBG	0.106	1.06
THCva	0.166	1.66
Delta-9-THC	0.285	2.85
THCA	24.05	240.51
Total Cannabinoids	25.43	254.3
Calculated Total THC	21.38	213.78
Calculated CBD Yield	0.05	0.52

Calculated Total THC = Delta-9-THC + 0.877 * THCA

Calculated Maximum CBD Yield = CBD + 0.877 * CBDA

Marin Analytics, LLC
250 Bel Marin Keys Blvd, Suite D4
Novato, CA 94949

833-321-TEST / info@marinanalytics.com

Mike Clemmons
Lab Manager

This sample has been tested by Marin Analytics, LLC using valid testing methodologies and a quality system. Values reported relate only to the sample tested. Marin Analytics, LLC makes no claims as to the efficacy, safety, or other risks associated with any detected or non-detected levels of any compounds reported herein. This Certificate shall not be reproduced except in full without the written approval of Marin Analytics, LLC. Copyright 2023 Marin Analytics, LLC All Rights Reserved.



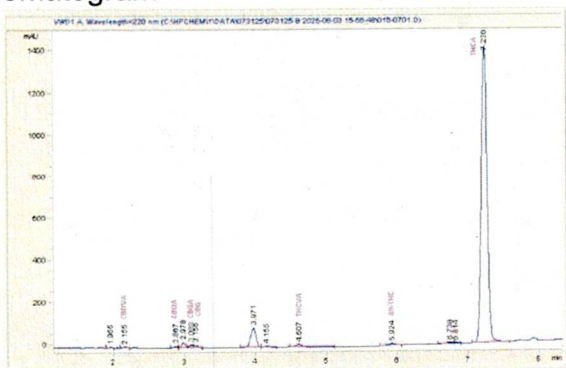
Watermelon Szkitles

Sample Submitted: 07-31-2025; Report Date: 08-07-2025

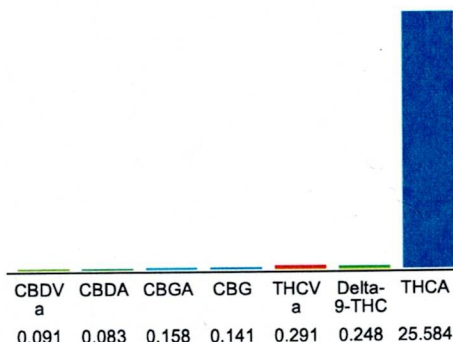
Watermelon Szkitles

Plant Material: Hemp Flower

Chromatogram



Cannabinoid Profile



Cannabinoid Profile by HPLC

0.25%

Delta-9-THC

0.00%

CBD

26.60%

Total Cannabinoids

Cannabinoid	% wt	mg/g
CBDVa	0.091	0.91
CBDA	0.083	0.83
CBGA	0.158	1.58
CBG	0.141	1.41
THCVa	0.291	2.91
Delta-9-THC	0.248	2.48
THCA	25.58	255.84
Total Cannabinoids	26.60	266.0
Calculated Total THC	22.69	226.85
Calculated CBD Yield	0.07	0.73

Calculated Total THC = Delta-9-THC + 0.877 * THCA

Calculated Maximum CBD Yield = CBD + 0.877 * CBDA

Marin Analytics, LLC
250 Bel Marin Keys Blvd, Suite D4
Novato, CA 94949

833-321-TEST / info@marinanalytics.com

Mike Clemmons
Lab Manager

This sample has been tested by Marin Analytics, LLC using valid testing methodologies and a quality system. Values reported relate only to the sample tested. Marin Analytics, LLC makes no claims as to the efficacy, safety, or other risks associated with any detected or non-detected levels of any compounds reported herein. This Certificate shall not be reproduced except in full without the written approval of Marin Analytics, LLC. Copyright 2023 Marin Analytics, LLC All Rights Reserved.

Certificate of Analysis

For R&D Use Only - Not a California Compliance Certificate.

Candy Runtz



Total CBD	ND
Total THC	27.46 %
Total Cannabinoids	31.30 %

Sample Name:

Candy Runtz

Matrix:

Plant

Unit Mass:

1 g per unit

Date Received:

8/29/2024



Approved By:

Marie True, M.S.

Laboratory Manager

This certificate of analysis is responsible for the tested sample only and is for research and development (R&D) use only. This certificate of analysis shall not be reproduced, except in its entirety, without the written approval of FESA Labs. FESA Labs shall not be liable for any damage that may result from the data contained herein in any way. FESA Labs makes no claim to the efficacy, safety or other risks associated with any detected or non-detected amounts of any substances reported herein. If there are any questions with this report please email info@fesalabs.com. This certificate of analysis is intended only for the use of the party to whom it is addressed and may contain information that is confidential or protected from disclosure under applicable law. If you have received this document in error, please immediately contact us.

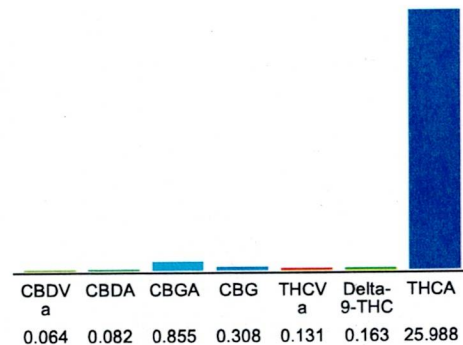
References: limit of detection (LOD), limit of quantitation (LOQ), not detected (ND), not tested (NT)



Sample Submitted: 05-01-2025; Report Date: 05-06-2025

Plant Material: Hemp Flower

Cannabinoid Profile



Delta-9-THC

CBD

Total Cannabinoids

Calculated Total THC = Delta-9-THC + 0.877 * THCA
Calculated Maximum CBD Yield = CBD + 0.877 * CBDA

833-321-TEST / info@marinanalytics.com

[Signature]

This sample has been tested by Marin Analytics, LLC using valid testing methodologies and a quality system. Values reported relate only to the sample tested. Marin Analytics, LLC makes no claims as to the efficacy, safety, or other risks associated with any detected or non-detected levels of any compounds reported herein. This Certificate shall not be reproduced except in full without the written approval of Marin Analytics, LLC. Copyright 2023 Marin Analytics, LLC All Rights Reserved.