



Roy Saliba

Portfolio

Design Management
Conceptual Design
BIM Integration and Development
Interior Design
Landscape
Project Management





TABLE OF CONTENTS



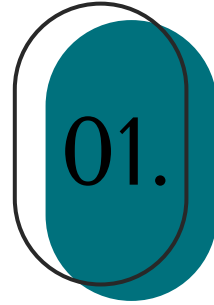
ABOUT ME



PROJECTS



EXPERIENCE

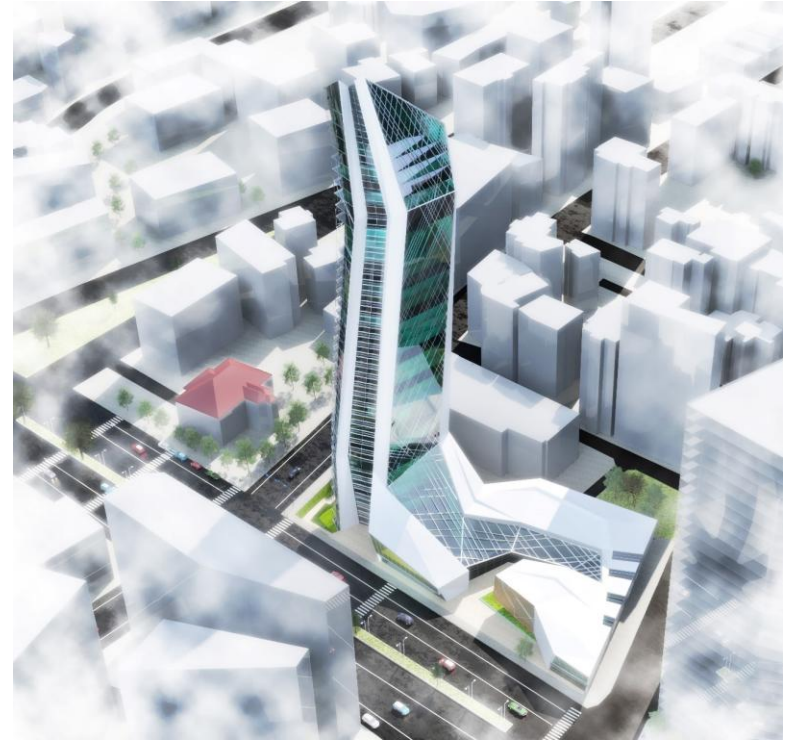


ABOUT ME



PROFESSIONAL SUMMARY

Design Manager and Design Architect with 12+ years of experience delivering design-led, large-scale developments across the UAE and MENA region. Recognized for combining strong design authorship with structured design management, ensuring that design quality is protected while projects remain buildable, compliant, and deliverable.





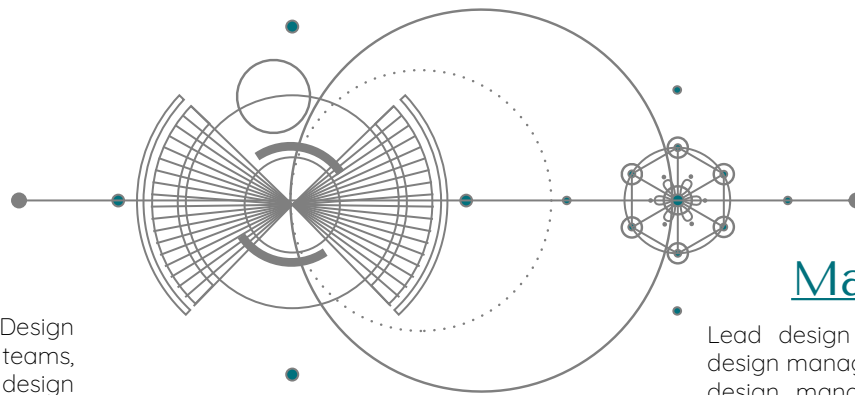
PROFESSIONAL SUMMARY

Experienced in leading multidisciplinary teams through Concept, and Design Development, balancing design vision, technicality, BIM coordination, and scope control. Proven ability to operate as the bridge between creative teams, engineers, and clients in complex environments.





Capabilities



Leadership

Provide design direction and act as Design Authority across multidisciplinary teams, setting design intent, owns final design decisions within agreed scope and escalates only when strategic, commercial, or contractual thresholds are exceeded

Integration

Use BIM as a design management and coordination tool, defining LOD strategies, leading multidisciplinary coordination, and resolving interfaces through structured clash resolution cycles to reduce risk and rework.

Design

Develop and lead architectural concepts from early vision through design development, translating ideas into coordinated, technically robust solutions. Balance spatial quality, functionality, and regulatory constraints while guiding teams toward clear, buildable outcomes.

Management

Lead design delivery through structured design management frameworks, including design management plans, stage gates, coordination cycles, and change control. Ensures design outcomes remain aligned with programme and approvals under compressed timelines and evolving client requirements.

Visualization

Produce and direct visual material to support design communication, client alignment, and decision-making, ensuring consistency with the project's design intent and narrative.

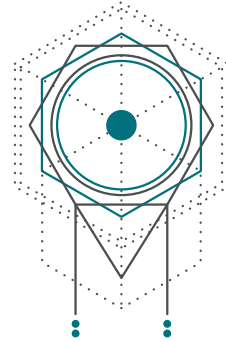


You can use an eraser on the drafting table or a
sledge hammer on the construction site

— Frank Llyod Wright



Soft Skills



Leadership

Act as a servant leader to every personnel of the team, and commit to remove obstacles

Problem solving

Critical thinking and exploring new technologies and ideas on a daily basis to solve any arising complex problems

Adaptability, Creativity and Attention to detail

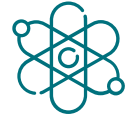
Push the boundaries and drive the team to think outside of the box by generating 10+ ideas before committing to one and challenging every aspect of constructability

Time Management

Priority and efficiency are key to meet deadlines

Communication and Collaboration

Implement a free flow of communication between team members, and enforce transparency and honesty within the team



Education

2014 | 2017



Lebanese University

IBA2

Masters of Architecture

2010 | 2014



Lebanese University

IBA1

Bachelor of Architecture

2010



Rosary Sisters

School

General Sciences

Languages

    Arabic

    English

    French



Software Skills



3ds Max , V-ray, Lumion, Vantage, Rhino3D



AutoCAD, Revit, Navisworks, Dynamo, Grasshopper



Photoshop, Illustrator, InDesign



Office, MS Project



DALL.E, Midjourney AI

Certificates

2023



Project Management Institute

Project Management
Professional – PMP ®

2021



Rochester Insititute of Technology

Project Management
Micro-Masters

Ongoing



University of Maryland

Construction
Management



EXPERIENCE

2023 | Present  **OTAK International**

Design Manager

2022 | 2023  **Obermeyer
Middle East GmbH**

Lead Design Architect

2019 | 2022  **Donrite
Engineering**

Project Architect

2013 | 2019  **PlanBee
Architecture**
BIM Architect.
Lead CG Artist

2018  **Tecman
Industry**

Site Architect
(3 months mission)

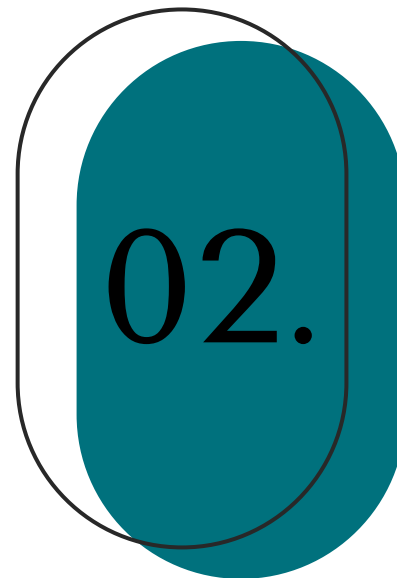
2015 | 2018  **ALLC**
3dsmax and V-ray Tutor

2015 | Present  **RenderS**
Freelance Architect
and CG Artist



Projects

Selection of most notable projects





Architecture

A decorative graphic on the right side of the page. It features a large teal rounded rectangle with the number '02.1' in white. This rectangle is partially enclosed by a thin black line that forms a larger rounded rectangle, creating a layered effect.

02.1



Jacob & Co
Residences

Location: UAE

Area: 150,000 sqm

Role: Lead Design Architect

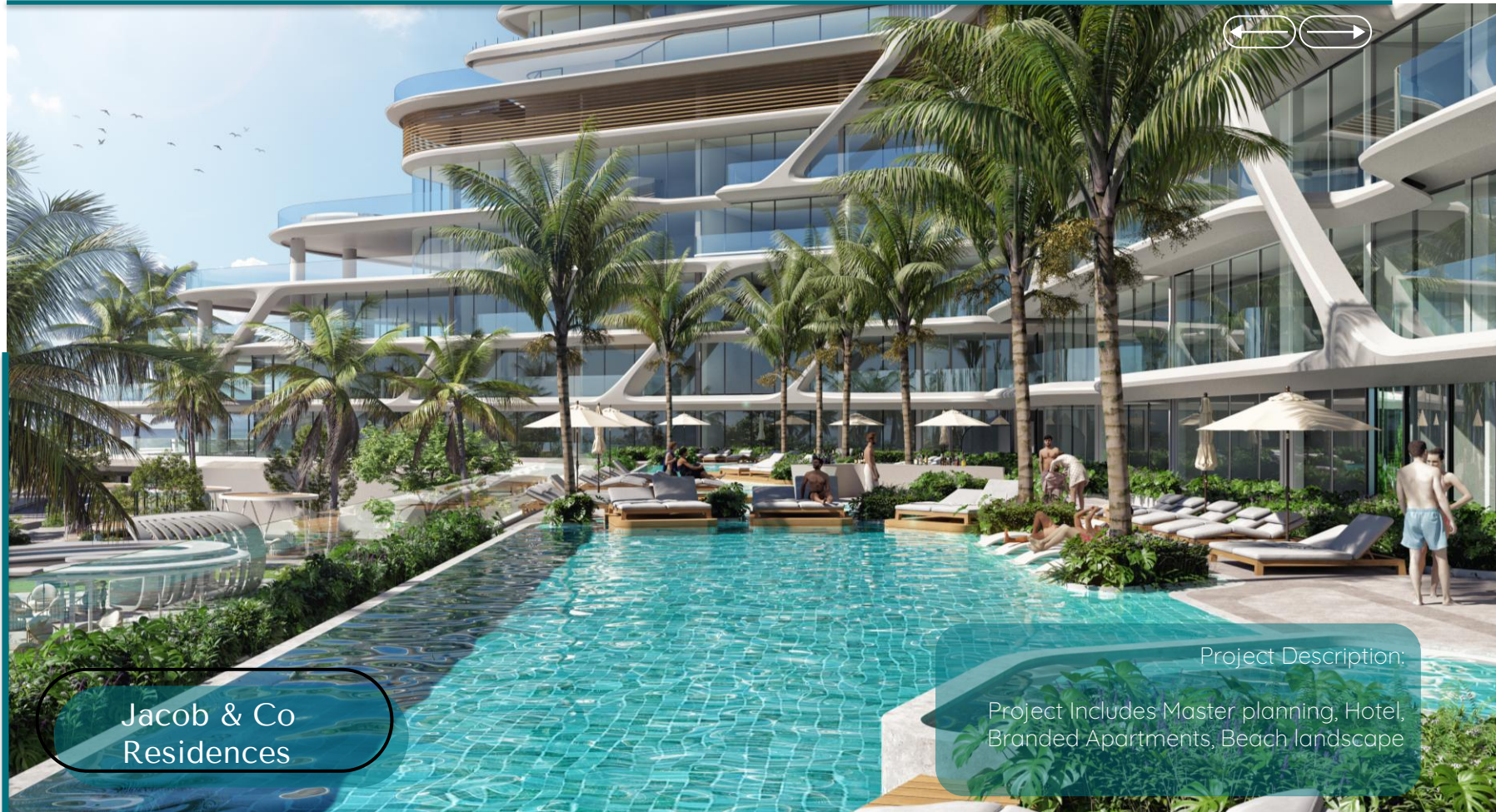


Jacob & Co
Residences

Location: UAE

Area: 150,000 sqm

Role: Lead Design Architect



Jacob & Co
Residences

Project Description:

Project Includes Master planning, Hotel,
Branded Apartments, Beach landscape



Sports City
Competition

Location: UAE

Area: 550,000 sqm

Role: Lead Design Architect



Sports City
Competition

Location: UAE

Area: 550,000 sqm

Role: Lead Design Architect

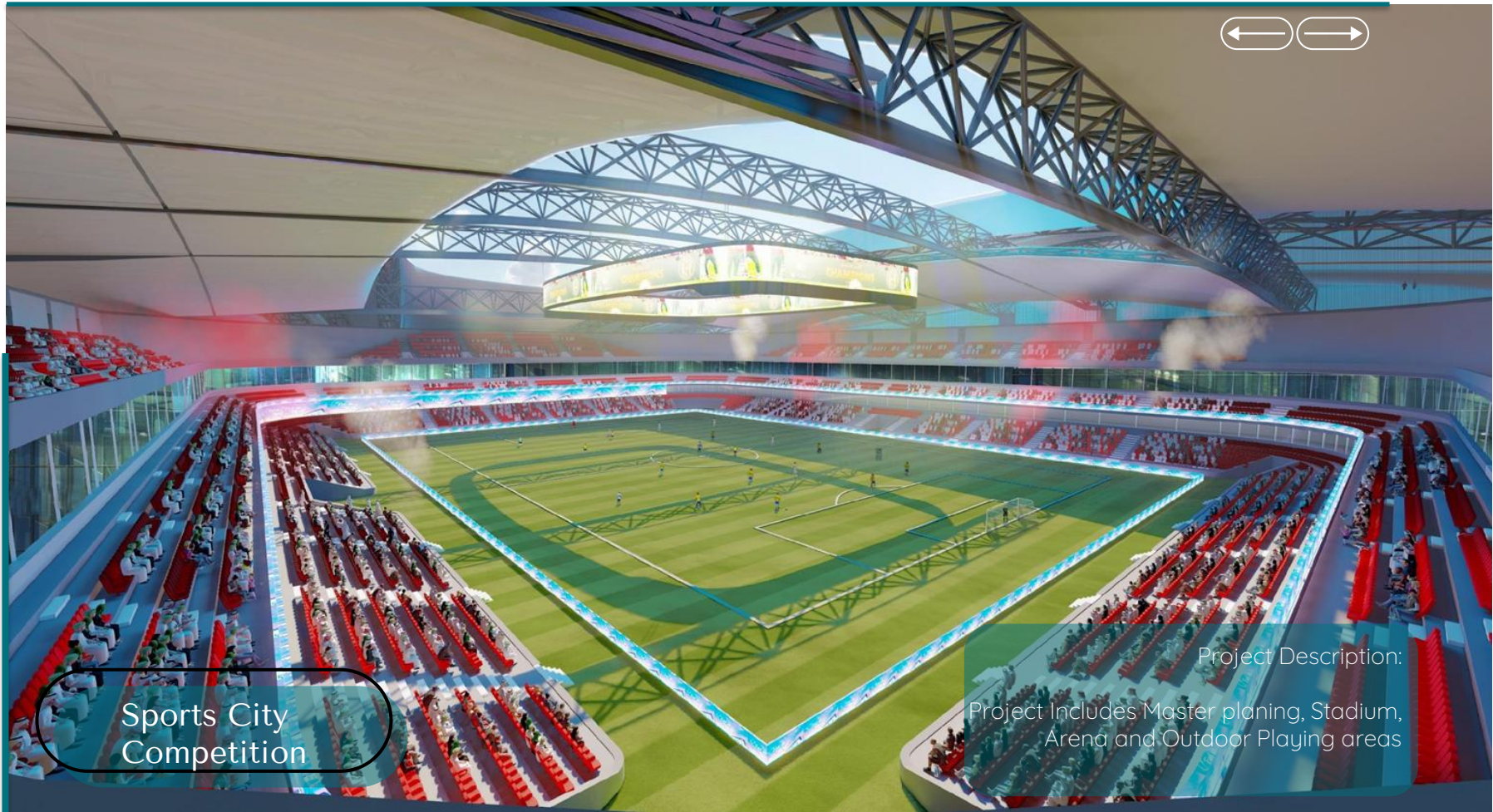


Sports City
Competition

Location: UAE

Area: 550,000 sqm

Role: Concept Design



Sports City
Competition

Project Description:

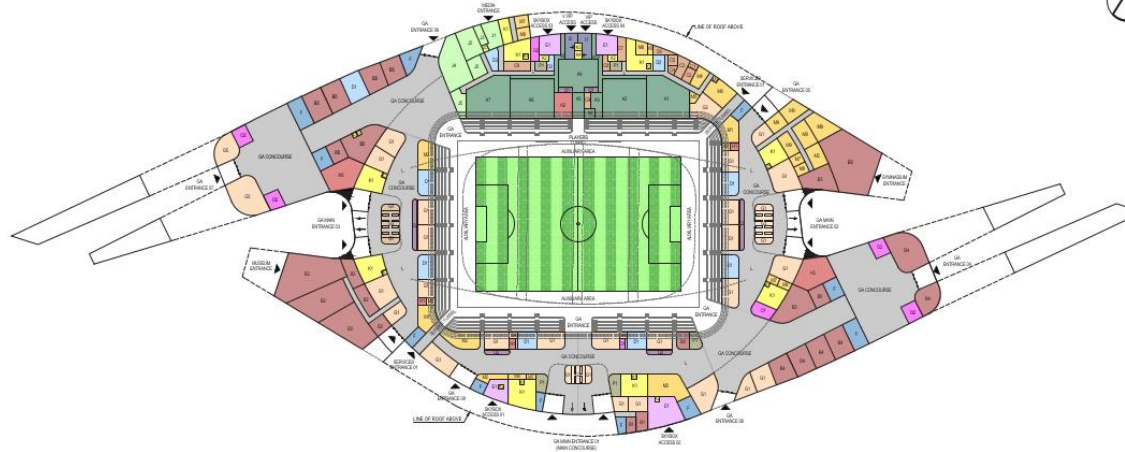
Project Includes Master planning, Stadium,
Arena and Outdoor Playing areas



Sports City
Competition

Project Description:

Project Includes Master planning, Stadium,
Arena and Outdoor Playing areas



- | A | B | C | D | E | F | G | H | I | J | K | L | M | N | O | P | Q | R | S | T | U | V | W | X | Y | Z | AA | AB | AC | AD | AE | AF | AG | AH | AI | AJ | AK | AL | AM | AN | AO | AP | AQ | AR | AS | AT | AU | AV | AW | AX | AY | AZ | BA | BB | BC | BD | BE | BF | BG | BH | BI | BJ | BK | BL | BM | BN | BO | BP | BQ | BR | BS | BT | BU | BV | BW | BX | BY | BZ | CA | CB | CC | CD | CE | CF | CG | CH | CI | CJ | CK | CL | CM | CN | CO | CP | CQ | CR | CS | CT | CU | CV | CW | CX | CY | CZ | DA | DB | DC | DD | DE | DF | DG | DH | DI | DJ | DK | DL | DM | DN | DO | DP | DQ | DR | DS | DT | DU | DV | DW | DX | DY | DZ | EA | EB | EC | ED | EE | EF | EG | EH | EI | EJ | EK | EL | EM | EN | EO | EP | EQ | ER | ES | ET | EU | EV | EW | EX | EY | EZ | FA | FB | FC | FD | FE | FF | FG | FH | FI | FJ | FK | FL | FM | FN | FO | FP | FQ | FR | FS | FT | FU | FV | FW | FX | FY | FZ | GA | GB | GC | GD | GE | GF | GG | GH | GI | GJ | GK | GL | GM | GN | GO | GP | GQ | GR | GS | GT | GU | GV | GW | GX | GY | GZ | HA | HB | HC | HD | HE | HF | HG | HH | HI | HJ | HK | HL | HM | HN | HO | HP | HQ | HR | HS | HT | HU | HV | HW | HX | HY | HZ | IA | IB | IC | ID | IE | IF | IG | IH | II | IJ | IK | IL | IM | IN | IO | IP | IQ | IR | IS | IT | IU | IV | IW | IX | IY | IZ | JA | JB | JC | JD | JE | JF | JG | JH | JI | IJ | JK | JL | JM | JN | JO | JP | JQ | JR | JS | JT | JU | JV | JW | JX | JY | JZ | KA | KB | KC | KD | KE | KF | KG | KH | KI | KJ | KK | KL | KM | KN | KO | KP | KQ | KR | KS | KT | KU | KV | KW | KX | KY | KZ | LA | LB | LC | LD | LE | LF | LG | LH | LI | LJ | LK | LL | LM | LN | LO | LP | LQ | LR | LS | LT | LU | LV | LW | LX | LY | LZ | MA | MB | MC | MD | ME | MF | MG | MH | MI | MJ | MK | ML | MM | MN | MO | MP | MQ | MR | MS | MT | MU | MV | MW | MX | MY | MZ | NA | NB | NC | ND | NE | NF | NG | NH | NI | NJ | NK | NL | NM | NN | NO | NP | NQ | NR | NS | NT | NU | NV | NW | NX | NY | NZ | OA | OB | OC | OD | OE | OF | OG | OH | OI | OJ | OK | OL | OM | ON | OO | OP | OQ | OR | OS | OT | OU | OV | OW | OX | OY | OZ | PA | PB | PC | PD | PE | PF | PG | PH | PI | PJ | PK | PL | PM | PN | PO | PP | PQ | PR | PS | PT | PU | PV | PW | PX | PY | PZ | QA | QB | QC | QD | QE | QF | QG | QH | QI | QJ | QK | QL | QM | QN | QO | QP | QQ | QR | QS | QT | QU | QV | QW | QX | QY | QZ | RA | RB | RC | RD | RE | RF | RG | RH | RI | RJ | RK | RL | RM | RN | RO | RP | RQ | RR | RS | RT | RU | RV | RW | RX | RY | RZ | SA | SB | SC | SD | SE | SF | SG | SH | SI | SJ | SK | SL | SM | SN | SO | SP | SQ | SR | SS | ST | SU | SV | SW | SX | SY | SZ | TA | TB | TC | TD | TE | TF | TG | TH | TI | TJ | TK | TL | TM | TN | TO | TP | TQ | TR | TS | TT | TU | TV | TW | TX | TY | TZ | UA | UB | UC | UD | UE | UF | UG | UH | UI | UJ | UK | UL | UM | UN | UO | UP | UQ | UR | US | UT | UU | UV | UW | UX | UY | UZ | VA | VB | VC | VD | VE | VF | VG | VH | VI | VJ | VK | VL | VM | VN | VO | VP | VQ | VR | VS | VT | VU | VV | VW | VX | VY | VZ | WA | WB | WC | WD | WE | WF | WG | WH | WI | WJ | WK | WL | WM | WN | WO | WP | WQ | WR | WS | WT | WU | WV | WW | WX | WY | WZ | XA | XB | XC | XD | XE | XF | XG | XH | XI | XJ | XK | XL | XM | XN | XO | XP | XQ | XR | XS | XT | XU | XV | XW | XX | XY | XZ | YA | YB | YC | YD | YE | YF | YG | YH | YI | YJ | YK | YL | YM | YN | YO | YP | YQ | YR | YS | YT | YU | YV | YW | YX | YY | YZ | ZA | ZB | ZC |
|---|---|---|---|---|---|---|---|---|---|---|---|---|---|---|---|---|---|---|---|---|---|---|---|---|---|----|----|----|----|----|----|----|----|----|----|----|----|----|----|----|----|----|----|----|----|----|----|----|----|----|----|----|----|----|----|----|----|----|----|----|----|----|----|----|----|----|----|----|----|----|----|----|----|----|----|----|----|----|----|----|----|----|----|----|----|----|----|----|----|----|----|----|----|----|----|----|----|----|----|----|----|----|----|----|----|----|----|----|----|----|----|----|----|----|----|----|----|----|----|----|----|----|----|----|----|----|----|----|----|----|----|----|----|----|----|----|----|----|----|----|----|----|----|----|----|----|----|----|----|----|----|----|----|----|----|----|----|----|----|----|----|----|----|----|----|----|----|----|----|----|----|----|----|----|----|----|----|----|----|----|----|----|----|----|----|----|----|----|----|----|----|----|----|----|----|----|----|----|----|----|----|----|----|----|----|----|----|----|----|----|----|----|----|----|----|----|----|----|----|----|----|----|----|----|----|----|----|----|----|----|----|----|----|----|----|----|----|----|----|----|----|----|----|----|----|----|----|----|----|----|----|----|----|----|----|----|----|----|----|----|----|----|----|----|----|----|----|----|----|----|----|----|----|----|----|----|----|----|----|----|----|----|----|----|----|----|----|----|----|----|----|----|----|----|----|----|----|----|----|----|----|----|----|----|----|----|----|----|----|----|----|----|----|----|----|----|----|----|----|----|----|----|----|----|----|----|----|----|----|----|----|----|----|----|----|----|----|----|----|----|----|----|----|----|----|----|----|----|----|----|----|----|----|----|----|----|----|----|----|----|----|----|----|----|----|----|----|----|----|----|----|----|----|----|----|----|----|----|----|----|----|----|----|----|----|----|----|----|----|----|----|----|----|----|----|----|----|----|----|----|----|----|----|----|----|----|----|----|----|----|----|----|----|----|----|----|----|----|----|----|----|----|----|----|----|----|----|----|----|----|----|----|----|----|----|----|----|----|----|----|----|----|----|----|----|----|----|----|----|----|----|----|----|----|----|----|----|----|----|----|----|----|----|----|----|----|----|----|----|----|----|----|----|----|----|----|----|----|----|----|----|----|----|----|----|----|----|----|----|----|----|----|----|----|----|----|----|----|----|----|----|----|----|----|----|----|----|----|----|----|----|----|----|----|----|----|----|----|----|----|----|----|----|----|----|----|----|----|----|----|----|----|----|----|----|----|----|----|----|----|----|----|----|----|----|----|----|----|----|----|----|----|----|----|----|----|----|----|----|----|----|----|----|----|----|----|----|----|----|----|----|----|----|----|----|----|----|----|----|----|----|----|----|----|----|----|----|----|----|----|----|----|----|----|----|----|----|----|----|----|----|----|----|----|----|----|----|----|----|----|----|----|----|----|----|----|----|----|----|----|----|----|----|----|----|----|----|----|----|----|----|----|----|----|----|----|----|----|----|----|----|----|----|----|----|----|----|----|----|----|----|----|----|----|----|----|----|----|----|----|----|----|----|----|----|----|----|----|----|----|----|----|----|----|----|----|----|----|
|---|---|---|---|---|---|---|---|---|---|---|---|---|---|---|---|---|---|---|---|---|---|---|---|---|---|----|----|----|----|----|----|----|----|----|----|----|----|----|----|----|----|----|----|----|----|----|----|----|----|----|----|----|----|----|----|----|----|----|----|----|----|----|----|----|----|----|----|----|----|----|----|----|----|----|----|----|----|----|----|----|----|----|----|----|----|----|----|----|----|----|----|----|----|----|----|----|----|----|----|----|----|----|----|----|----|----|----|----|----|----|----|----|----|----|----|----|----|----|----|----|----|----|----|----|----|----|----|----|----|----|----|----|----|----|----|----|----|----|----|----|----|----|----|----|----|----|----|----|----|----|----|----|----|----|----|----|----|----|----|----|----|----|----|----|----|----|----|----|----|----|----|----|----|----|----|----|----|----|----|----|----|----|----|----|----|----|----|----|----|----|----|----|----|----|----|----|----|----|----|----|----|----|----|----|----|----|----|----|----|----|----|----|----|----|----|----|----|----|----|----|----|----|----|----|----|----|----|----|----|----|----|----|----|----|----|----|----|----|----|----|----|----|----|----|----|----|----|----|----|----|----|----|----|----|----|----|----|----|----|----|----|----|----|----|----|----|----|----|----|----|----|----|----|----|----|----|----|----|----|----|----|----|----|----|----|----|----|----|----|----|----|----|----|----|----|----|----|----|----|----|----|----|----|----|----|----|----|----|----|----|----|----|----|----|----|----|----|----|----|----|----|----|----|----|----|----|----|----|----|----|----|----|----|----|----|----|----|----|----|----|----|----|----|----|----|----|----|----|----|----|----|----|----|----|----|----|----|----|----|----|----|----|----|----|----|----|----|----|----|----|----|----|----|----|----|----|----|----|----|----|----|----|----|----|----|----|----|----|----|----|----|----|----|----|----|----|----|----|----|----|----|----|----|----|----|----|----|----|----|----|----|----|----|----|----|----|----|----|----|----|----|----|----|----|----|----|----|----|----|----|----|----|----|----|----|----|----|----|----|----|----|----|----|----|----|----|----|----|----|----|----|----|----|----|----|----|----|----|----|----|----|----|----|----|----|----|----|----|----|----|----|----|----|----|----|----|----|----|----|----|----|----|----|----|----|----|----|----|----|----|----|----|----|----|----|----|----|----|----|----|----|----|----|----|----|----|----|----|----|----|----|----|----|----|----|----|----|----|----|----|----|----|----|----|----|----|----|----|----|----|----|----|----|----|----|----|----|----|----|----|----|----|----|----|----|----|----|----|----|----|----|----|----|----|----|----|----|----|----|----|----|----|----|----|----|----|----|----|----|----|----|----|----|----|----|----|----|----|----|----|----|----|----|----|----|----|----|----|----|----|----|----|----|----|----|----|----|----|----|----|----|----|----|----|----|----|----|----|----|----|----|----|----|----|----|----|----|----|----|----|----|----|----|----|----|----|----|----|----|----|----|----|----|----|----|----|----|----|----|----|----|----|----|----|----|----|----|----|----|----|----|----|----|----|----|----|----|----|----|----|----|----|----|----|----|----|----|----|----|----|----|----|----|----|----|----|----|----|

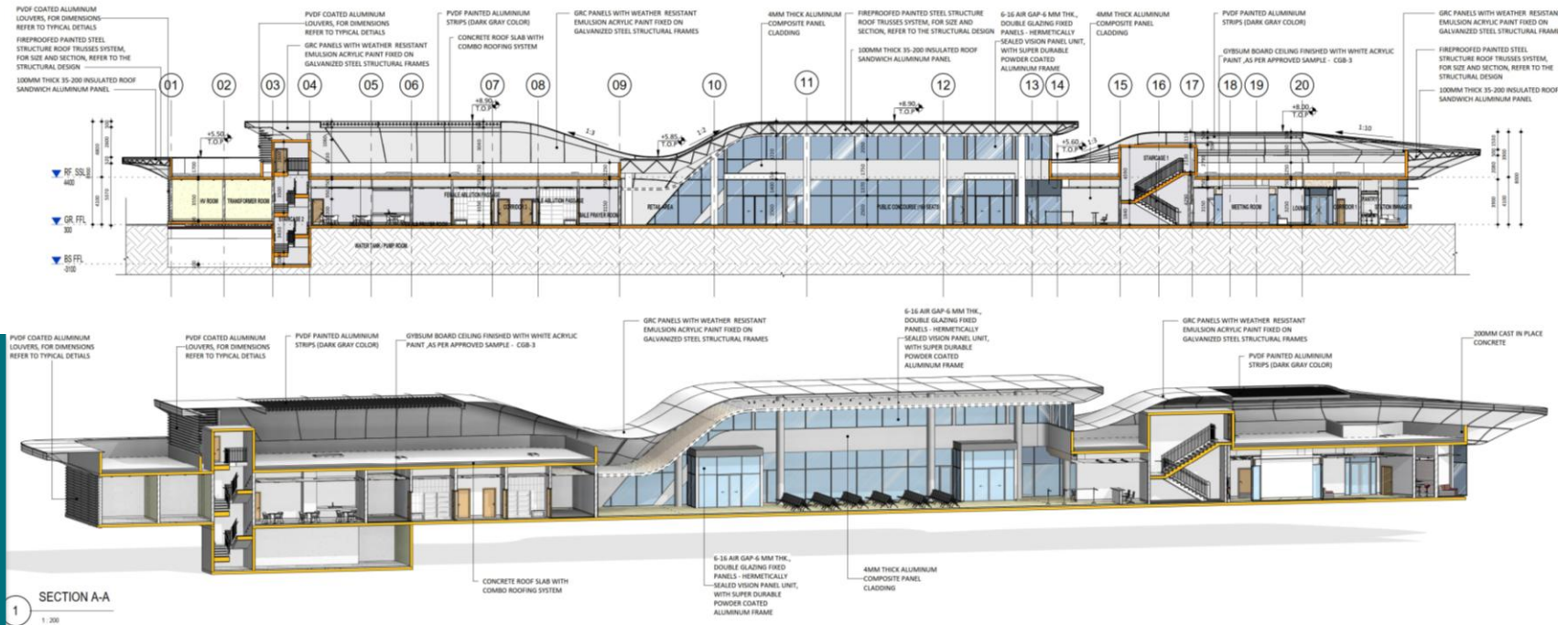
Sports City Competition



Shakhbout
Bus Station

Location: UAE
Area: 3,000 sqm

Role: Lead Design Architect



Shakhbout Bus Station

Location: UAE

Area: 3,000 sqm

Role: BIM Development, SD, DD



Shakhbout
Bus Station`

Location: UAE

Area: 3,000 sqm

Role: Lead Interior Designer



Khalifa City
Bus Stations

Location: UAE

Area: 3,000 sqm

Role: Lead Design Architect



Khalifa City
Bus Stations

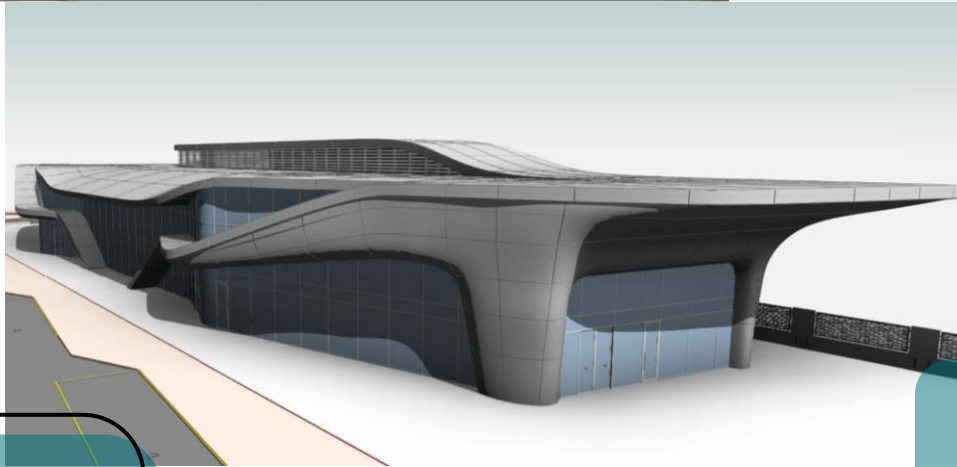
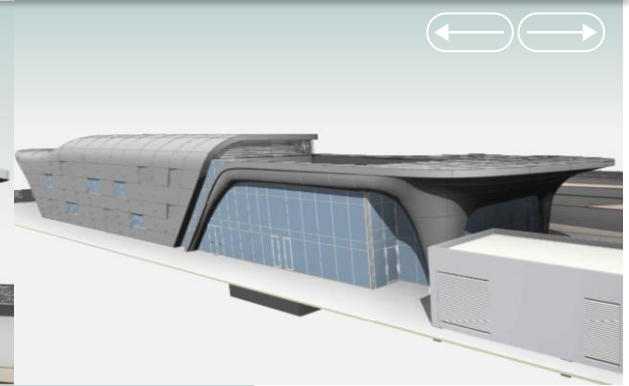
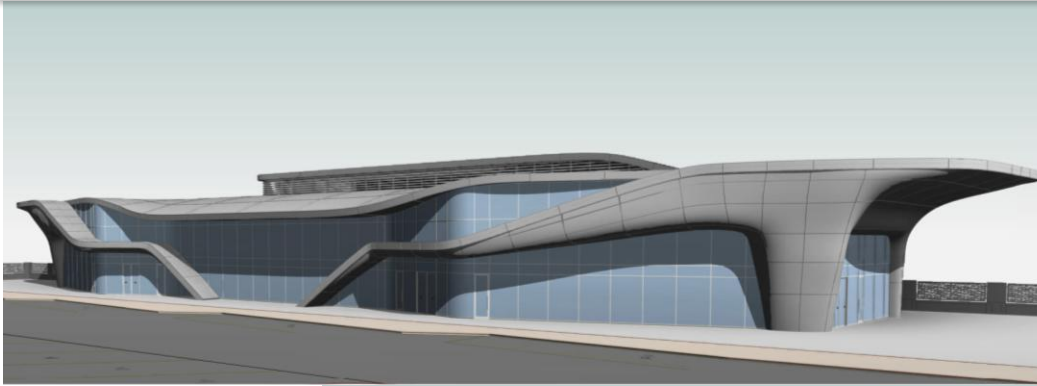
Location: UAE

Area: 3,000 sqm

Role: Lead Interior Designer



Location: UAE



Shakhbout
Bus Station

Location: UAE

Area: 3,000 sqm

Role: BIM Development, SD, DD

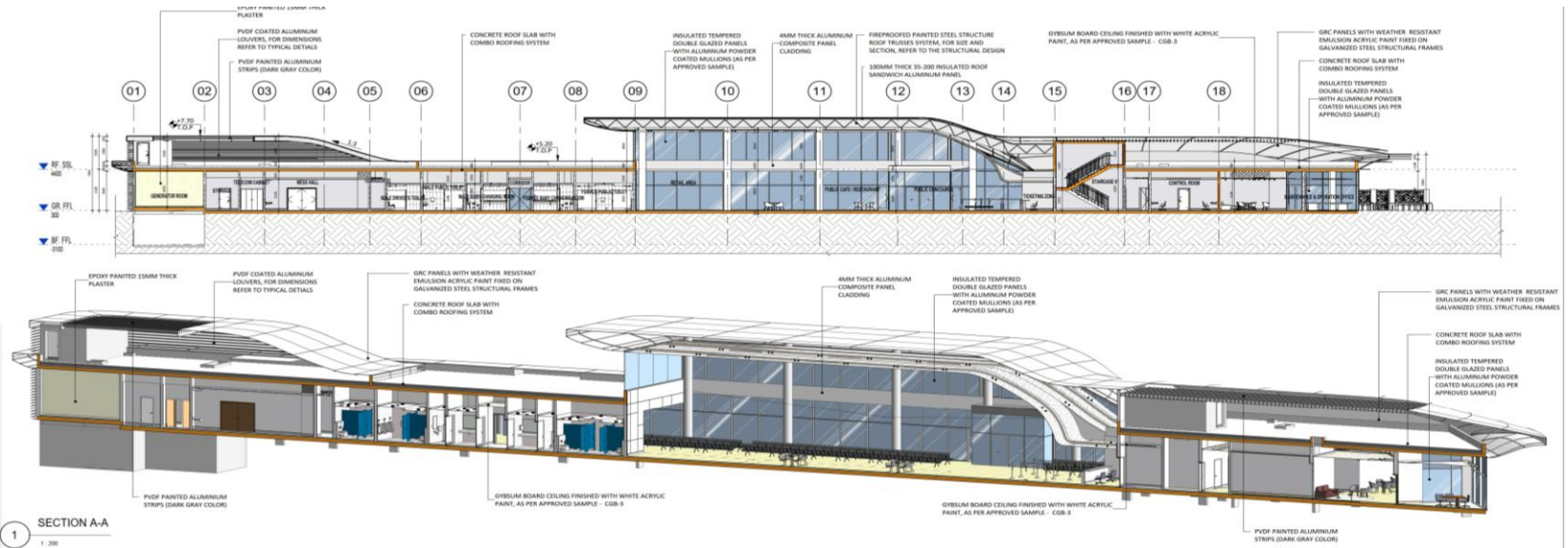


AI Shahama
Bus Station

Location: UAE

Area: 3,000 sqm

Role: Concept Design



Al Shahama Bus Station

Location: UAE

Area: 3,000 sqm

Role: BIM Development, SD, DD

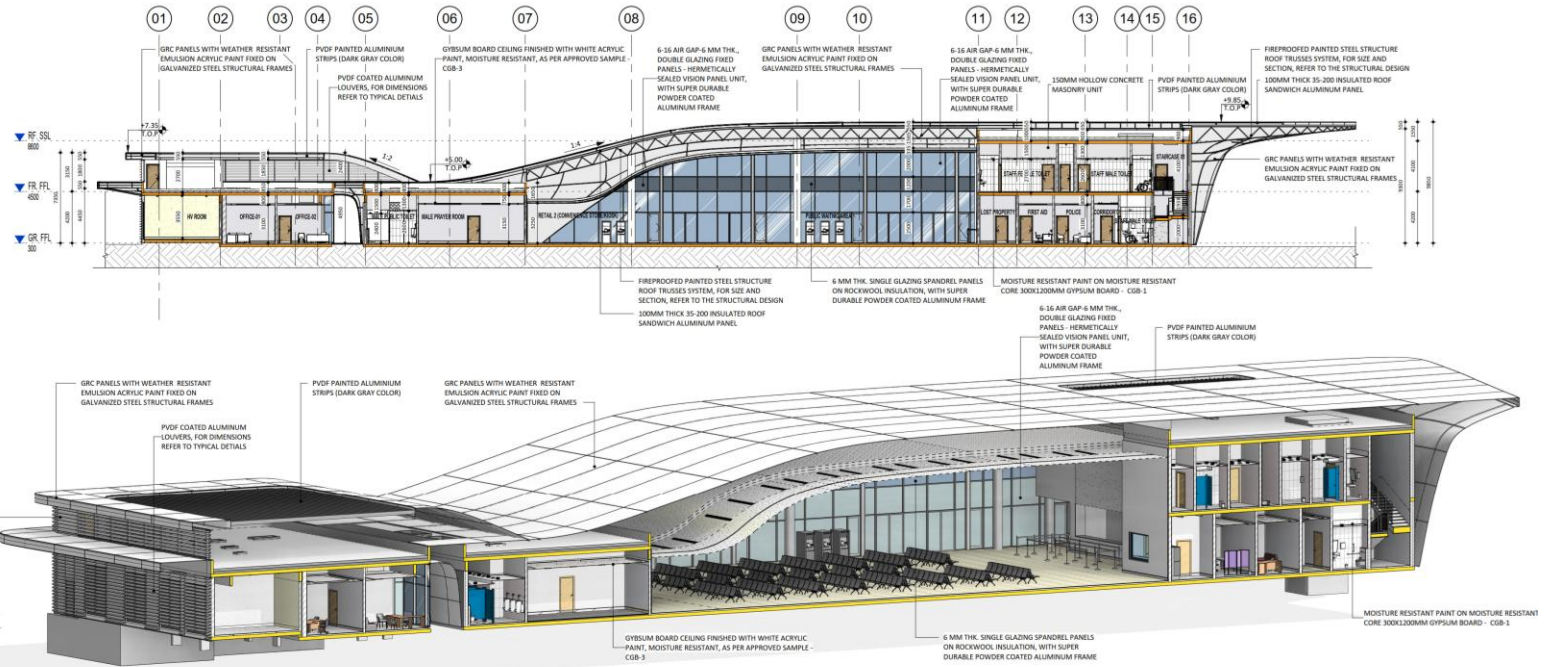


Mussaffah
Bus Station

Location: UAE

Area: 3,500 sqm

Role: Concept Design, BIM Development, SD, DD



Mussaffah Bus Station

Location: UAE

Area: 3,500 sqm

Role: Concept Design, BIM Development, SD, DD



Multi-use Complex
Competition

Location: UAE

Area: 250,000 sqm

Role: Concept Design, CGI



Multi-use Complex
Competition

Location: UAE

Area: 250,000 sqm

Role: Lead Design Architect



Multi-use Complex
Competition

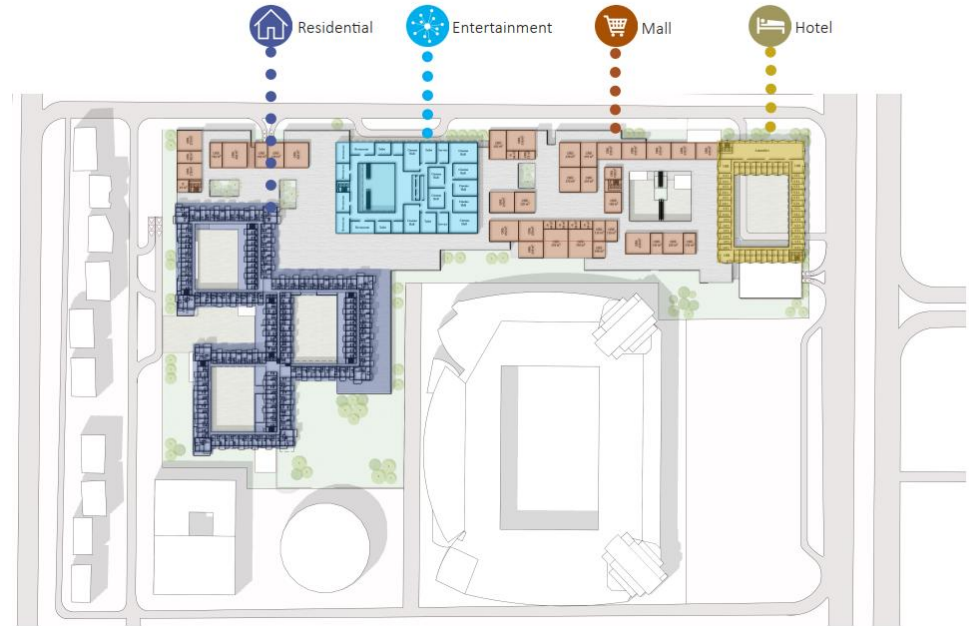
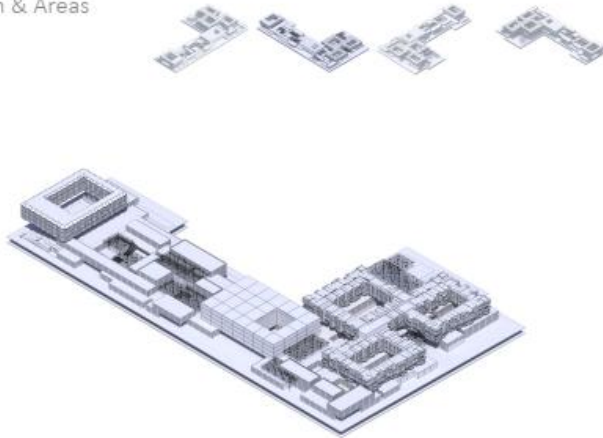
Location: UAE

Area: 250,000 sqm

Role: Concept Design, CGI



Program & Areas



Multi-use Complex
Competition

Location: UAE

Area: 250,000 sqm

Role: Concept Design, CGI



AI Maryah
Pedestrian Link
Bridge

Location: Maryah Island, UAE

Area: 300 sqm

Role: CD, Design Development, BIM Coordination, IFC, ADM



Al Maryah
Pedestrian Link
Bridge

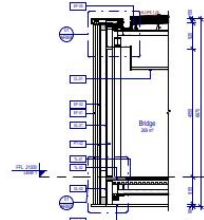
Location: Maryah Island, UAE

Area: 300 sqm

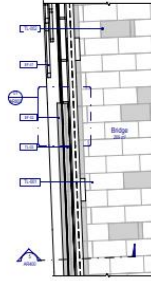
Role: CD, Design Development, BIM Coordination, IFC, ADM



6 Wall Section 3D - 02



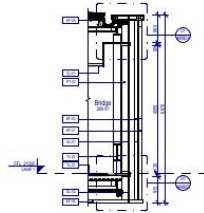
5 Wall Section 02
1:50



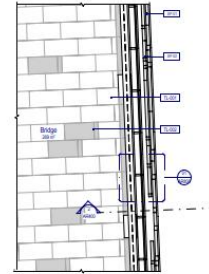
4 Wall Section Partial Plan 02
1 : 50



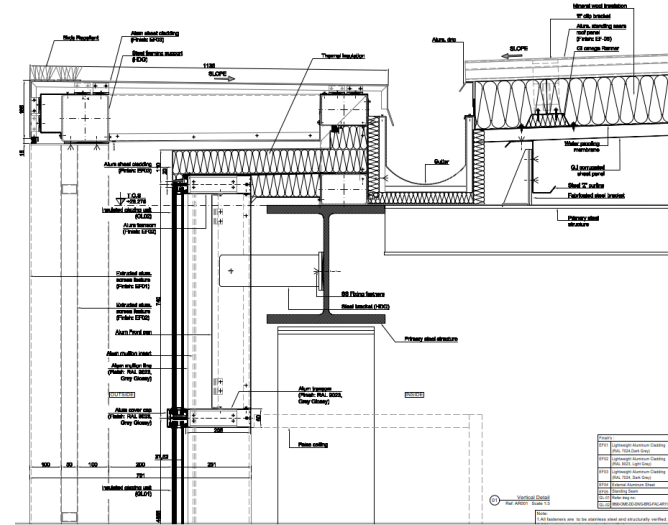
3 Wall Section 3D - 01



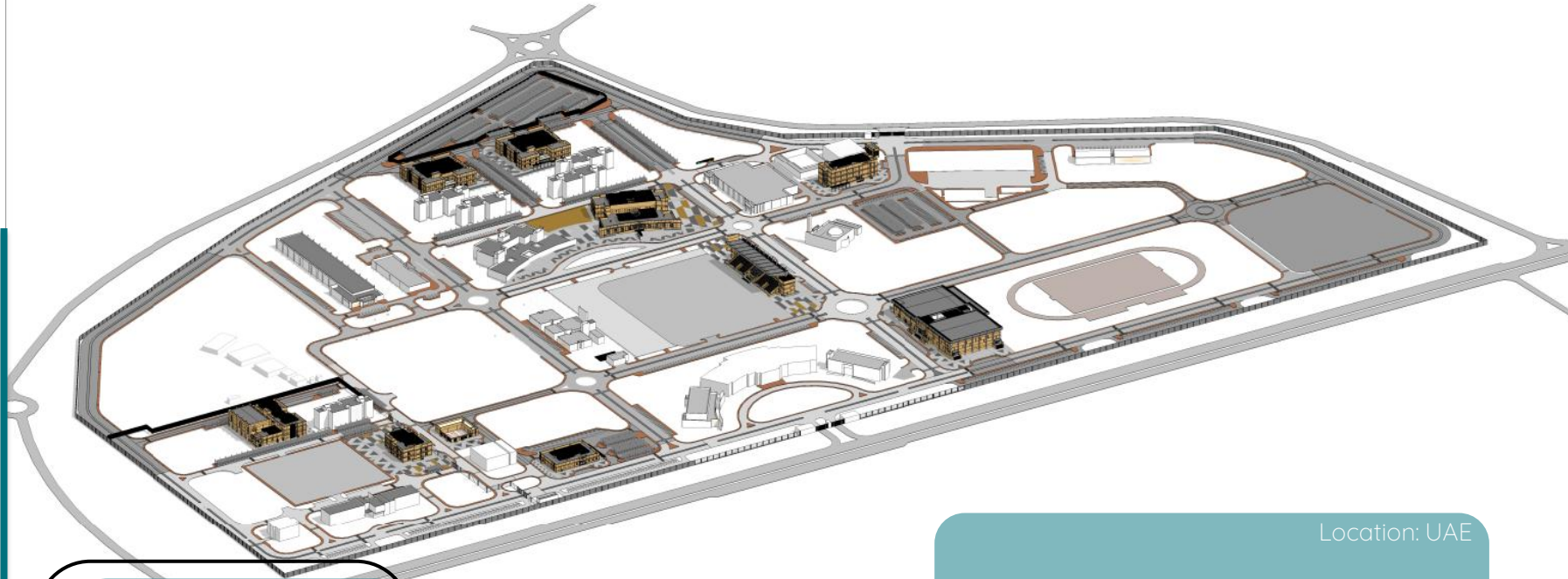
2 Wall Section 01
1:50



1 Wall Section Partial Plan 01
1:50



At Mary's Pedestrian Link Bridge



Police Academy

Location: UAE

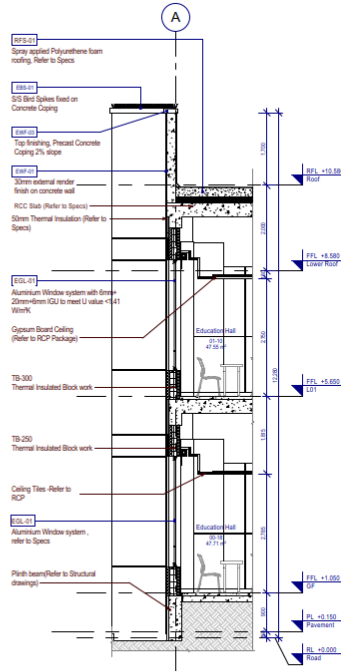
Area: 70,000 sqm

Role: Design Development, Landscape Design,
BIM Coordination, Clash Detection, IFC

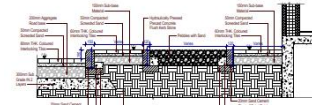




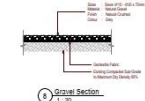
6 Wall Section 02 - 3D View



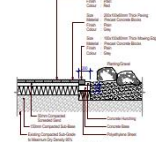
5 Wall Section 02
1:50



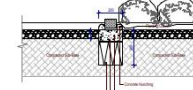
7 Parapet Wall With Landscape Area Typical Section Details
1:20



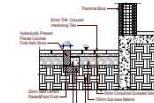
8 Ground Section
1:20



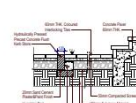
9 Window Details
1:20



10 Roof Section
1:20



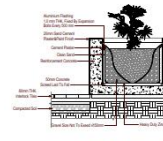
6 Flat Roof Detail At Building Entrance
1:20



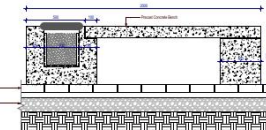
8 Balcony Detail Typ. Sections
1:20



4 Concrete Bench - 3D View



5 Bench Planter Box Section-1
1:20



7 Bench Planter Box Section-2
1:20



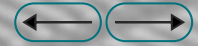
6 Bench Planter Box - Plan
1:10

Police Academy

Location: UAE

Area: 70,000 sqm

Role: Design Development, Landscape Design, BIM Coordination, Clash Detection, IFC

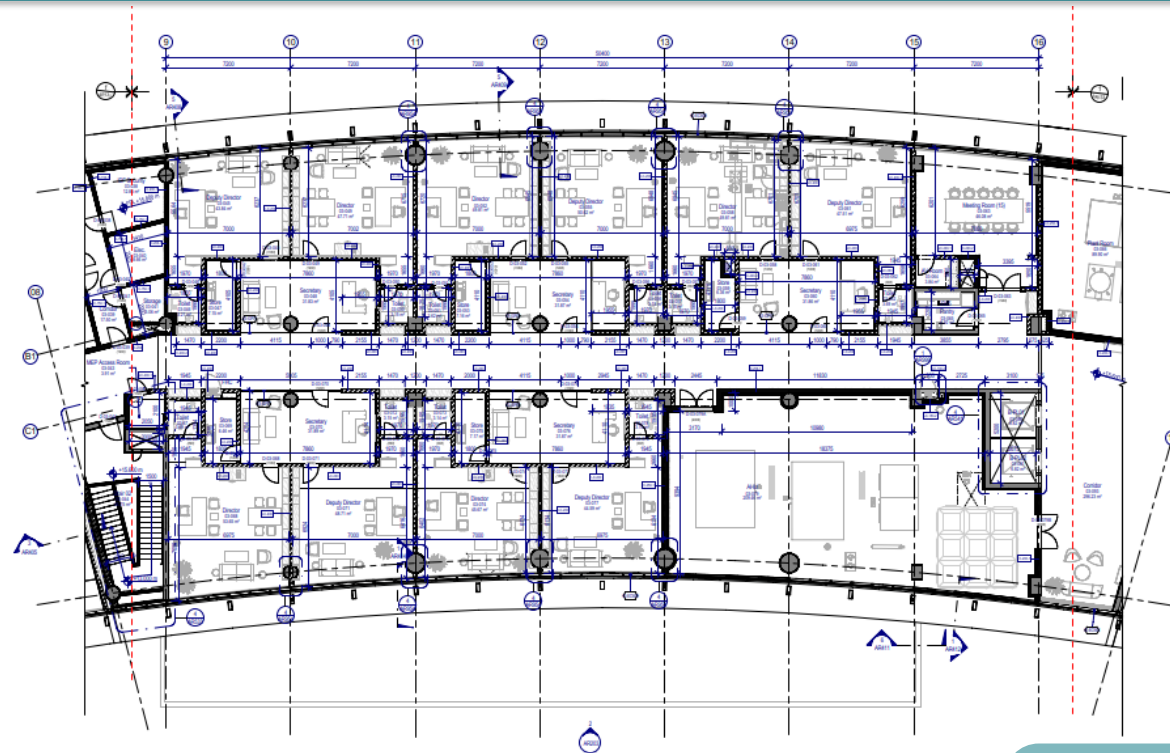


Academic Complex
Confidential

Location: UAE

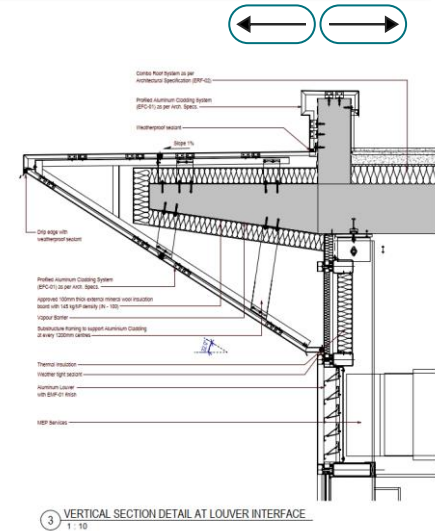
Area: 2,000,000 sqm

Role: Design Development, Coordination, IFC



1 Third Floor - Part Plan 2
1:100

Academic Complex



3 VERTICAL SECTION DETAIL AT LOUVER INTERFACE
1:10

Location: UAE

Area: 2,000,000 sqm

Role: Design Development, BIM Coordination, IFC



Radisson Blu
Hotel

Location: UAE

Area: 5,000 sqm

Role: Concept Design, Façade Renovation and CGI



Aurora Hotel
and Resort

Location: Tunisia

Area: 40,000 sqm

Role: Concept Design and CGI



Aurora Hotel and Resort

Project Description:

Luxury Hotel and Resort that features a Wedding and Special Occasion Hall, Gym, Restaurants, Outdoor Pools Area, Chalet, and Hotel Rooms.



N4V Complex

Location: Nigeria

Area: 8,000 sqm

Role: Concept Design and CGI



N4V Complex

Project Description:

Private compound of 4 Villas (4BR) in Nigeria, including Masterplan and Landscape



Louvres Abu
Dhabi

Location: UAE

Area: 24,000 sqm

Role: Design Development, BIM Coordination LOD 500



St. Regis Hotel
and Resort

Location: Assoufid - Morocco

Area: 100,000 sqm

Role: CGI



St. Regis Hotel
and Resort

Project Description:

Luxury Development including an
Hotel, Spa, Villas, Landscaped Area
and Golf Courses



Sheikh Zayed
Complex

Location: Sudan

Area: 120,000 sqm

Role: Planning, Concept Design, BIM LOD100, CGI



Interior Design

A decorative graphic element located on the right side of the page. It features a solid teal rounded rectangle with a thin white outline. The number '02.2' is centered within the teal shape in a white, serif font.

02.2



Academic Complex

Location: UAE

Area: 2,000,000 sqm

Role: Concept Design, CGI



Academic Complex

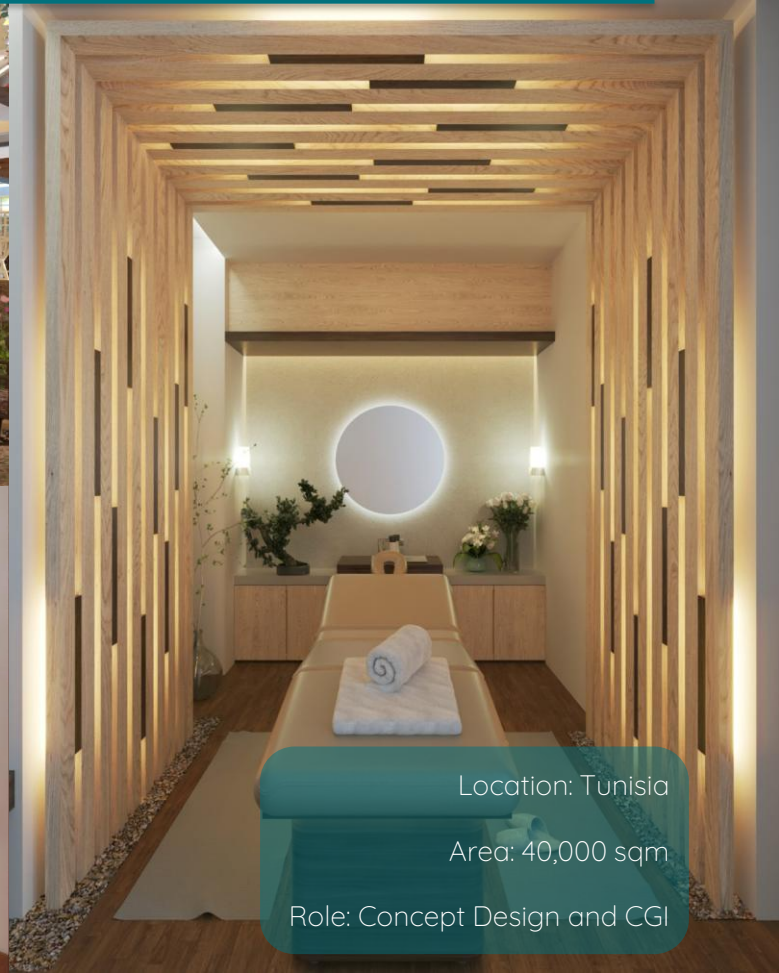
Location: UAE

Area: 800,000 sqm

Role: Concept Design, CGI



Aurora Hotel
and Resort



Location: Tunisia

Area: 40,000 sqm

Role: Concept Design and CGI

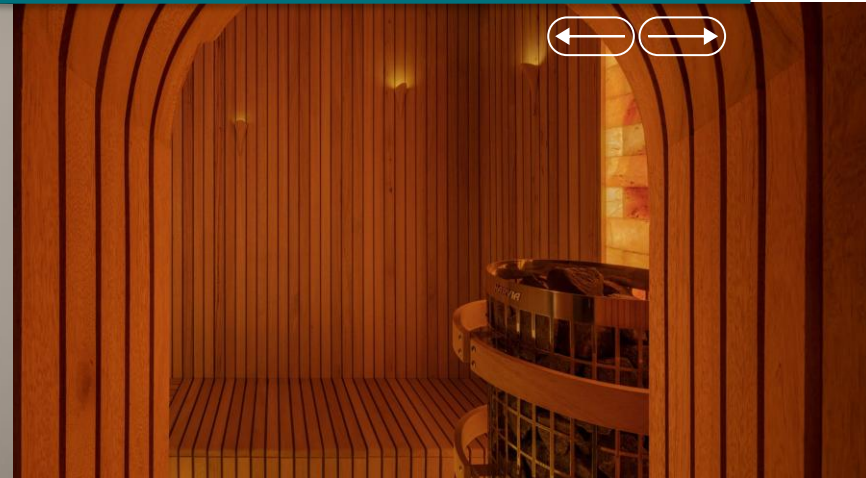
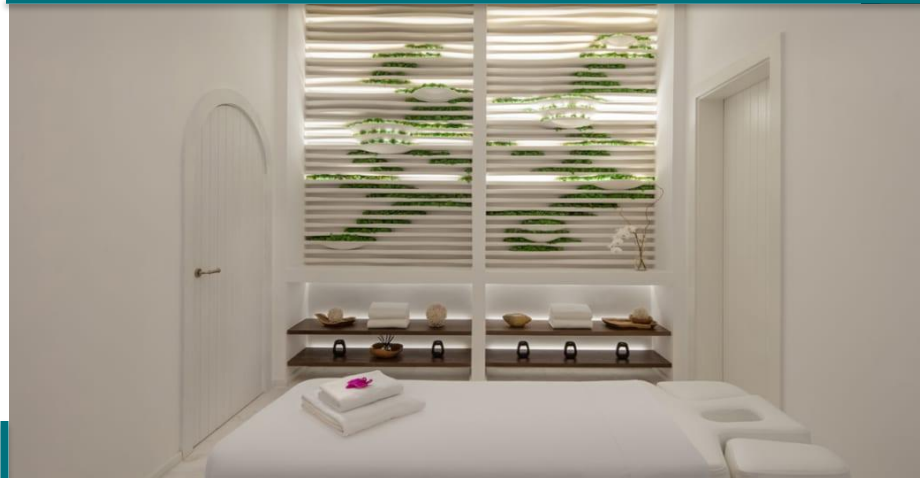


Anantara
Santorini Resort

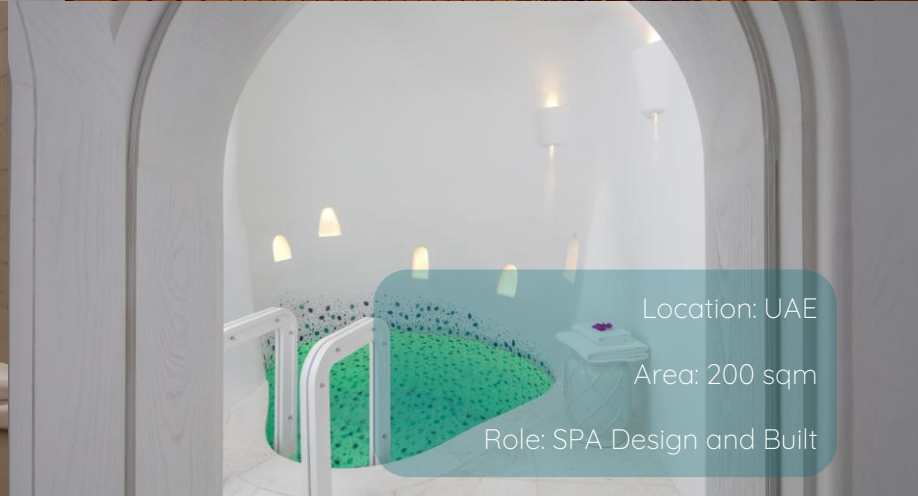
Location: UAE

Area: 200 sqm

Role: SPA Design and Built



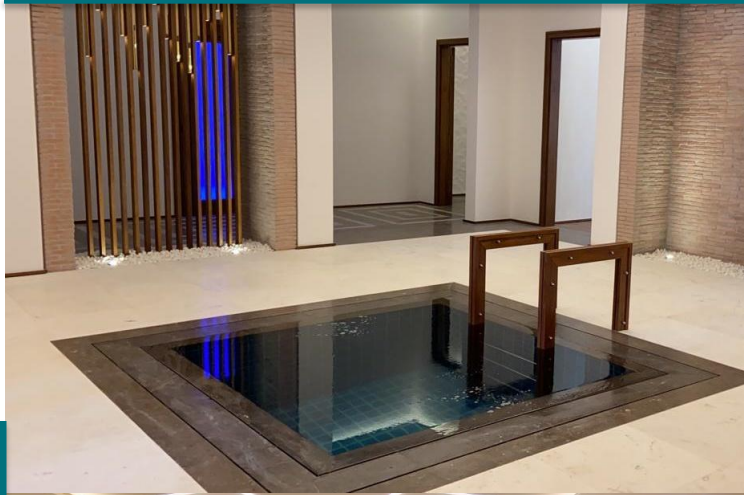
Anantara
Santorini Resort



Location: UAE

Area: 200 sqm

Role: SPA Design and Built



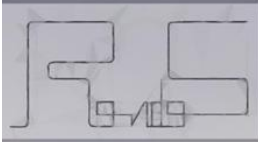
VVIP SPA
Al-Yassat



Location: UAE

Area: 1,200-sqm

Role: Design and Built



Offices Solidere

Location: Beirut

Area: 250sqm

Role: Design Development, CGI



Offices Solidere

Location: Beirut

Area: 250sqm

Role: Design Development, CGI

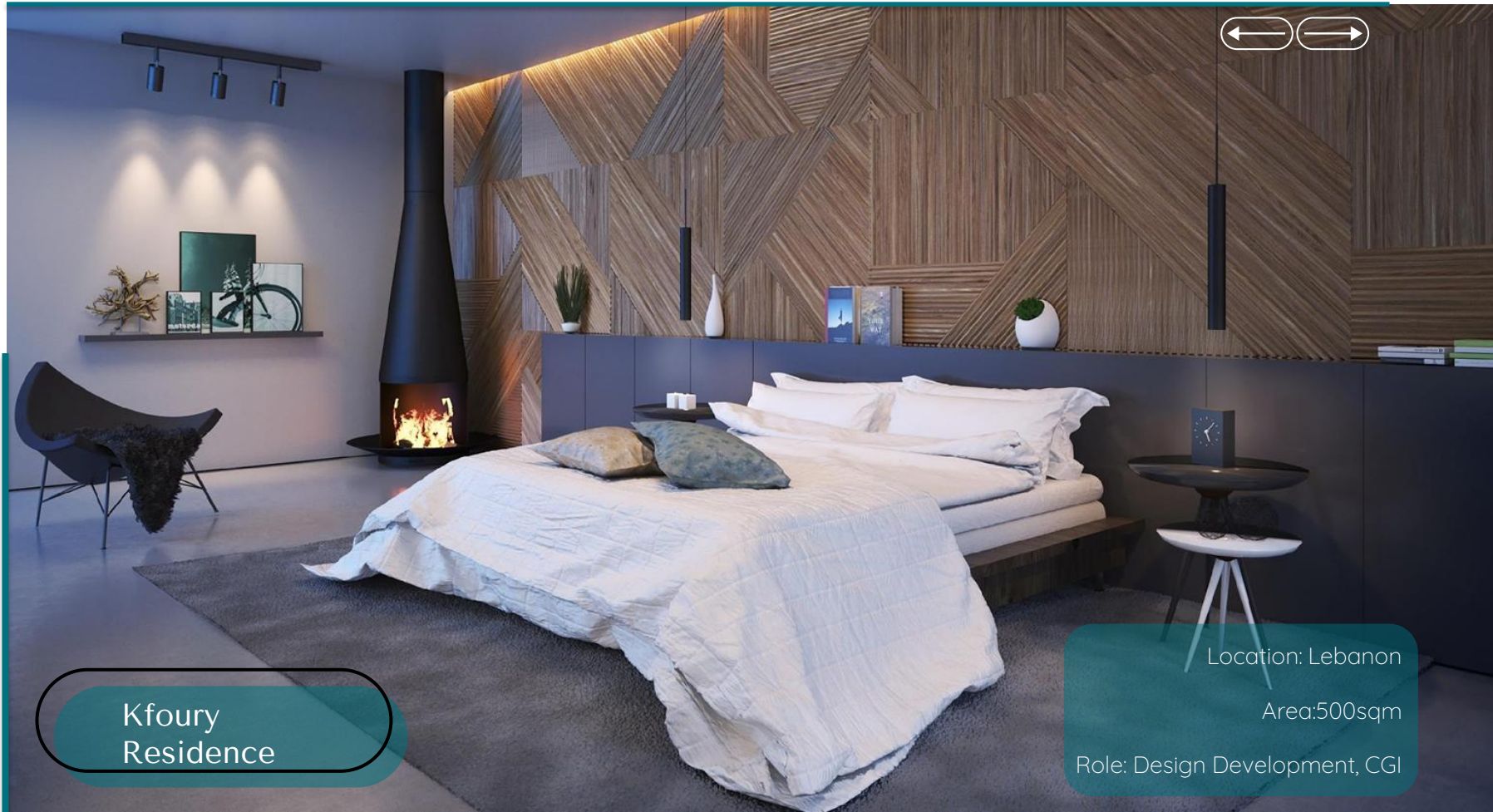


Kfoury
Residence

Location: Lebanon

Area: 500sqm

Role: Design Development, CGI



Kfoury
Residence

Location: Lebanon

Area: 500sqm

Role: Design Development, CGI



Kfoury
Residence

Location: Lebanon

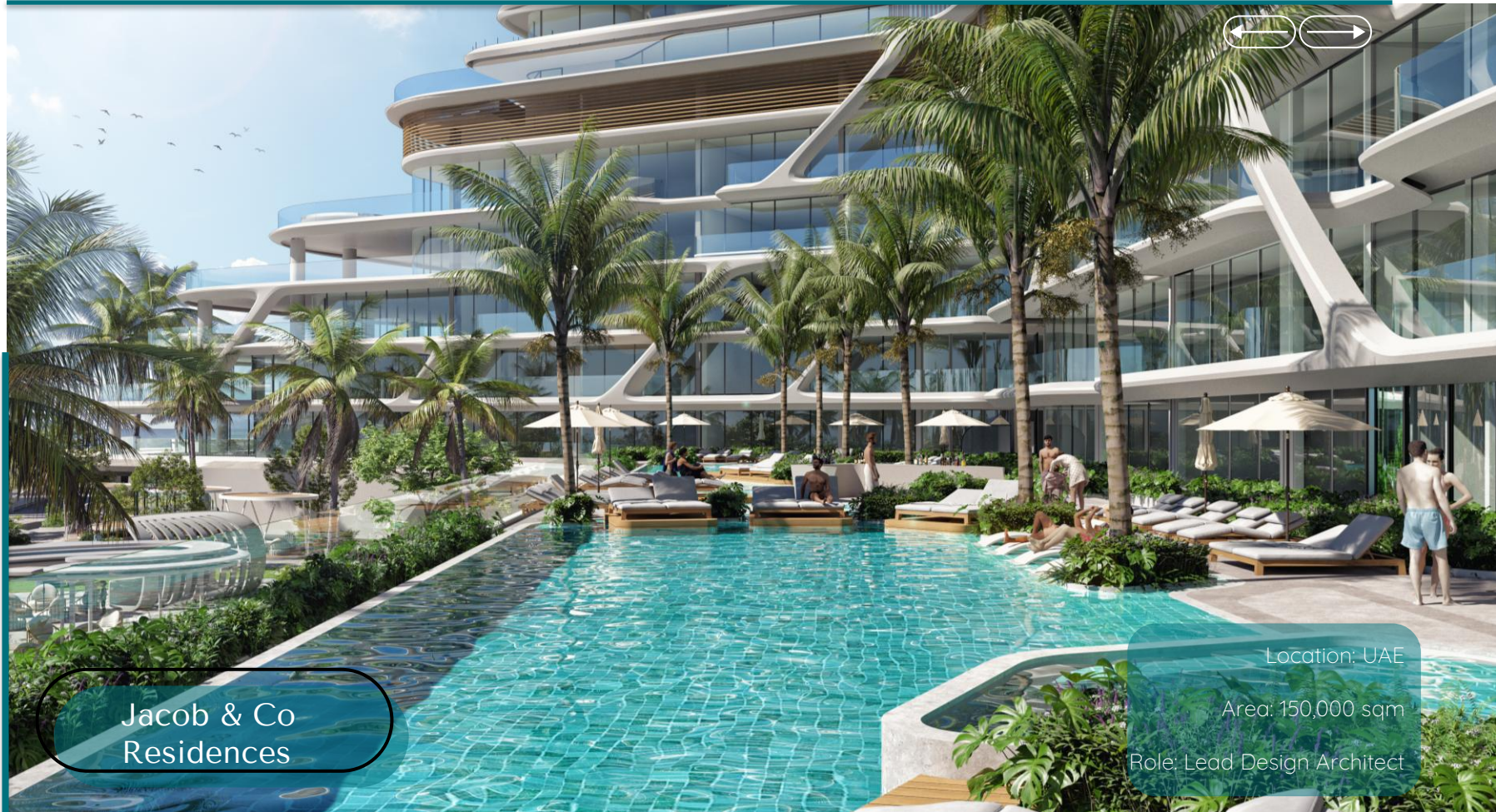
Area: 500sqm

Role: Design Development, CGI



Landscape





Jacob & Co
Residences

Location: UAE

Area: 150,000 sqm

Role: Lead Design Architect



Jacob & Co
Residences

Location: UAE

Area: 150,000 sqm

Role: Lead Design Architect



Anantara
Santorini Resort

Location: UAE

Area: 1200 sqm

Role: Design and Built



Anantara
Santorini Resort

Location: UAE

Area: 1200 sqm

Role: Design and Built



Anantara
Santorini Resort

Location: UAE

Area: 1200 sqm

Role: Design and Built



VVIP Andalusia
Private Garden

Location: UAE

Area: 100 sqm

Role: Design and Built



VVIP Andalusia
Private Garden

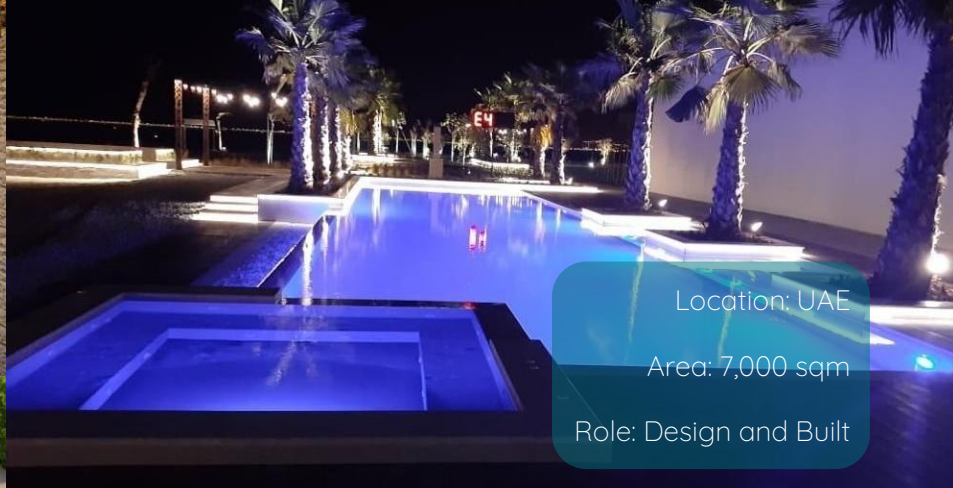
Location: UAE

Area: 100 sqm

Role: Design and Built



VVIP Ruwaiss
Beach Villa



Location: UAE

Area: 7,000 sqm

Role: Design and Built



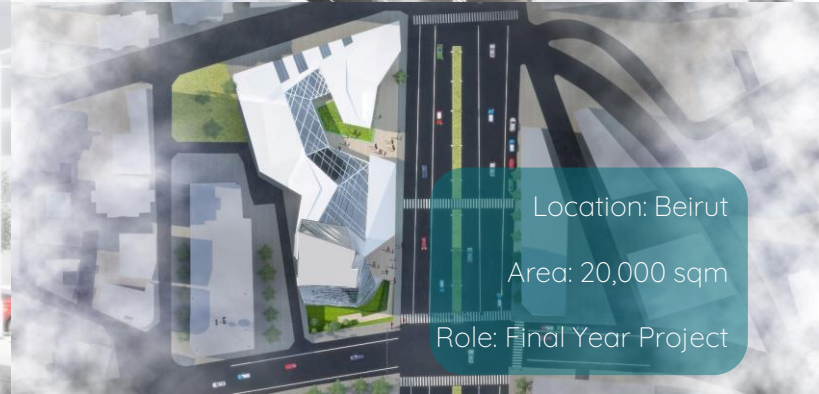
Final Year Project

A decorative graphic consisting of a teal rounded rectangle with the number '02.4' inside, overlaid by a thin black oval outline.

02.4



Beirut World
Trade Center



Location: Beirut

Area: 20,000 sqm

Role: Final Year Project

A vertical line on the left side of the page. Overlapping circles, one teal and one white with a black outline, framing the number 03.

03.

EXPERIENCE



EXPERIENCE

Design Consultancy

Prepare all design stages:
From Concept design to
Constuction documents

CGI

Create all kind of CG Graphics,
from 2D and 3D diagrams, to
Photorealistic images

BIM

Execution of a BIM model,
Including modelling families,
Covering all LODs

Concept Design

Prepare a full concept report
for competitions

Management

Lead and Manage multiple
Projects that ranged in size
and scope.

Supervision

Coordination, Management
and Supervision of technical
aspects of construction and
finishes



2,650,000

Approximate total area (sqm) of the projects worked on



EXPERIENCE AROUND THE WORLD

Projects Locations





Thank You

E-mail: roysaliba178@gmail.com

Mob: +971 58 6344156

Web: www.renderers.work

