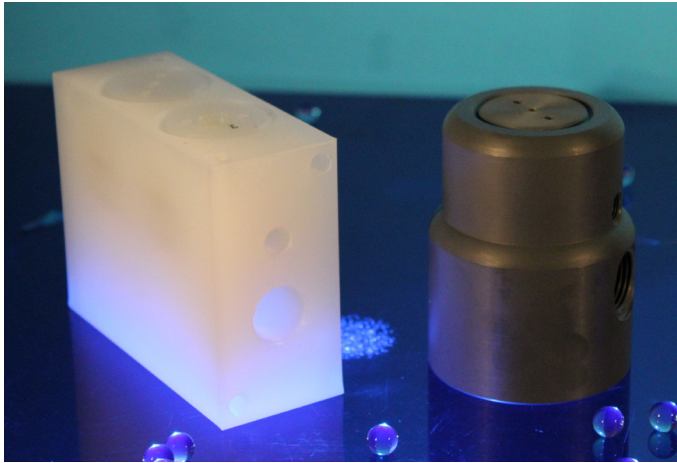


D.I WATER VALVE



Wetted path is free of

- **LUBRICANTS**
- **ELASTOMERS**
- **SPRINGS**

The D.I Water valve is perfect for wet bench manufacturers or any semiconductor facility where ultra- pure water is required.

NACOM'S DI WATER VALVE, Part of the Bandit series pneumatic valve family. Available in sizes ranging from 1/2" fnpt, up to 1.0" fnpt. 2 way and 3 way configurations with body materials available in PVC, POLYPROPYLENE, and PVDF.

Specifications

SPEC	PVC BODY	POLYPRO BODY	PVDF BODY
TYPE	2 WAY NC OR 2 WAY NO	2 WAY NC OR 2 WAY NO	2 WAY NC OR 2 WAY NO
ORIFICE	1/2"	1/2"	1/2"
CV FACTOR	2.8 G.P.M@ 1 PSI	2.8 G.P.M@ 1 PSI	2.8 G.P.M@ 1 PSI
FLUID PRESSURE MAX	75 PSI @ 70 deg C	75 PSI @ 70 deg C	75 PSI @ 70 deg C
BACK PRESSURE MAX	40 PSI @ 70 deg C	40 PSI @ 70 deg C	40 PSI @ 70 deg C
MEDIA TEMPERATURE MAX	140 degrees F 60 deg C	160 degrees F 80 deg C	212 degrees F 100 deg C
MEDIA PORTS	1/2" fnpt	1/2" fnpt	1/2" fnpt 1/2" socket weld
PILOT PRESSURE	40-60 psi	40-60 psi	40-60 psi
BODY	PVC	POLYPROPYLENE	PVDF
BELLOWS/POPPET	VIRGIN PTFE	VIRGIN PTFE	VIRGIN PTFE
PISTON	PVC	POLYPROPYLENE	PVDF
BACKING PLATE	VIRGIN PTFE	VIRGIN PTFE	VIRGIN PTFE
PNEUMATIC ORINGS	ETHYLENE PROPYLENE	ETHYLENE PROPYLENE	KALREZ
SPRING	STAINLESS STEEL	STAINLESS STEEL	TEFLON COATED SS

The DI Water valve is available in 2way open, 2way closed, and 3 way configurations.
 Add on features : Listed below is add on features that can be added to the normal closed version only.
 To order valve with the feature desired add designating call out to end of part number for that feature

Example : DIB-PVC88P-C-REC indicates this valve has the restrict closed option

REC Restrict closed. Prevents valve from closing completely
REO Restrict open. Prevents valve from opening completely
REB Restrict both. Prevents valve from opening and closing completely
MA Micro adjust . Screw turn allows fluid to trickle thru and completely close when screw is turned