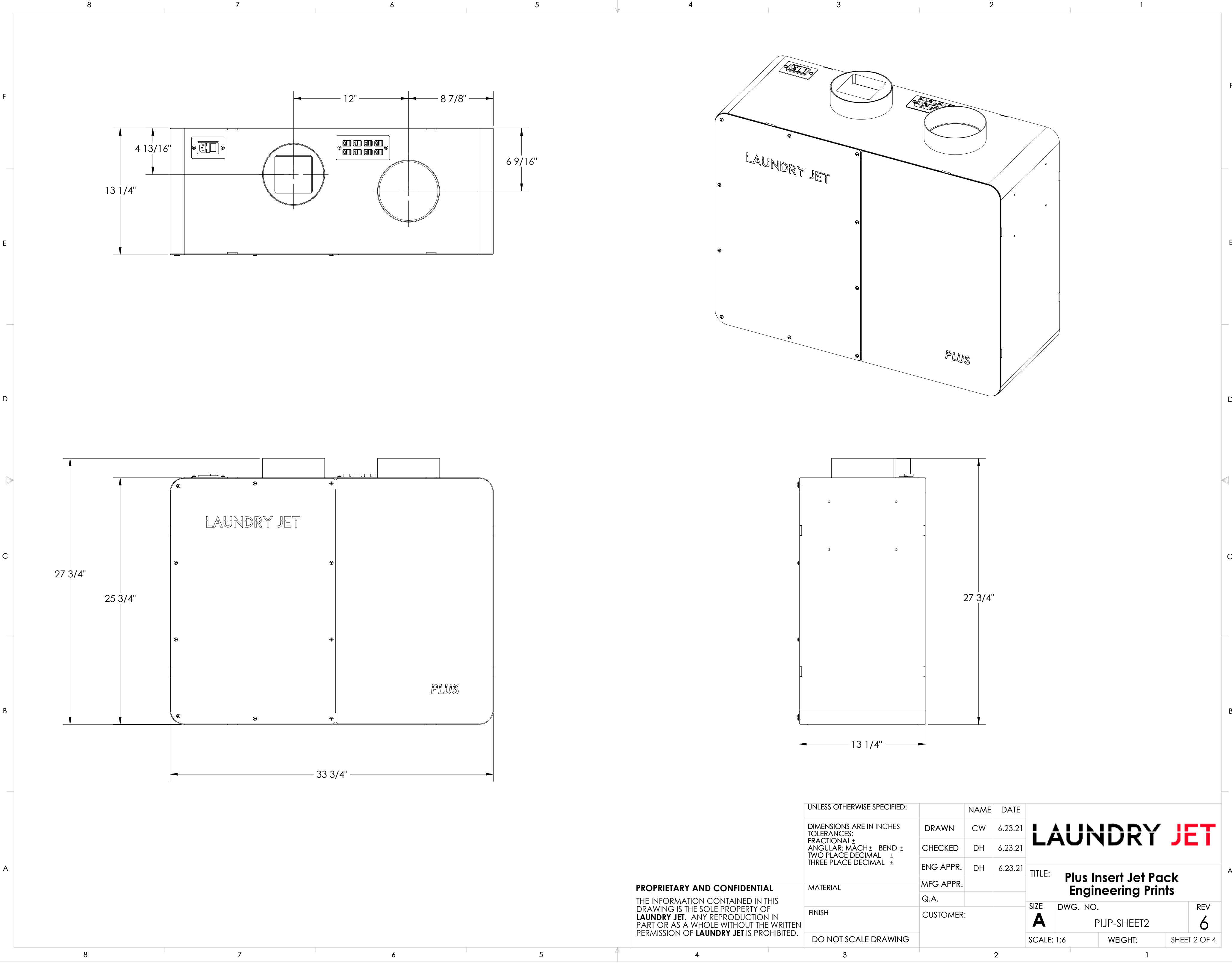
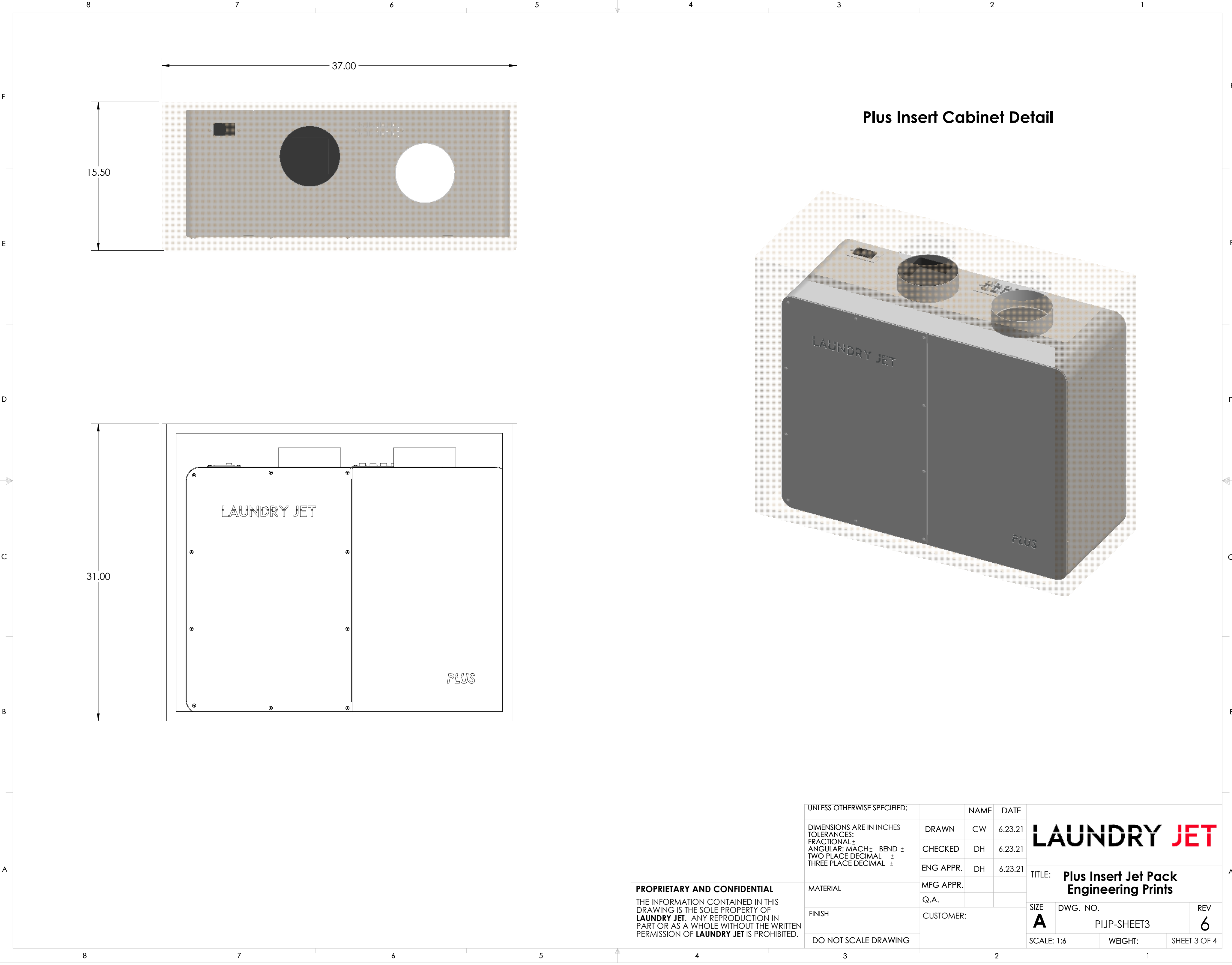


Cabinet Cutout Detail

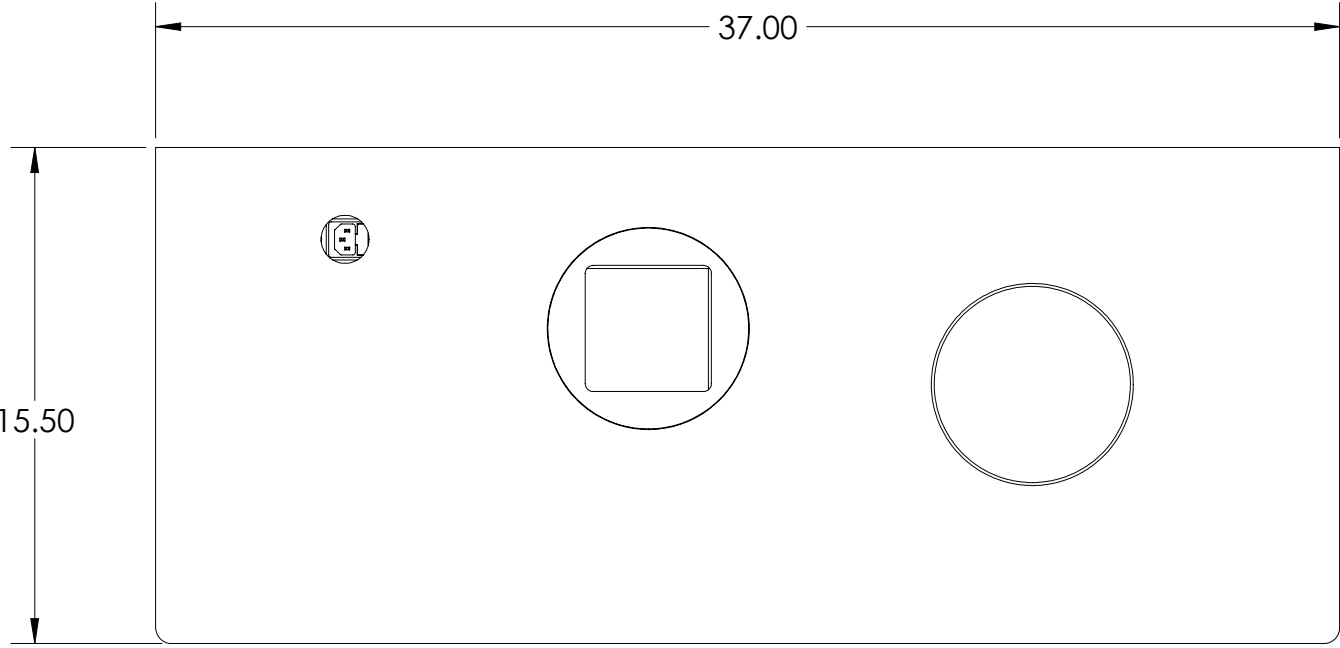
PROPRIETARY AND CONFIDENTIAL
THE INFORMATION CONTAINED IN THIS DRAWING IS THE SOLE PROPERTY OF **LAUNDRY JET**. ANY REPRODUCTION IN PART OR AS A WHOLE WITHOUT THE WRITTEN PERMISSION OF **LAUNDRY JET** IS PROHIBITED.

UNLESS OTHERWISE SPECIFIED:						
DIMENSIONS ARE IN INCHES TOLERANCES: FRACTIONAL: \pm ANGULAR: MACH \pm BEND \pm TWO PLACE DECIMAL \pm THREE PLACE DECIMAL \pm	DRAWN	CW	6.23.21	LAUNDRY JET TITLE: Plus Insert Jet Pack Engineering Prints		
	CHECKED	DH	6.23.21			
	ENG APPR.	DH	6.23.21			
	MFG APPR.					
MATERIAL	Q.A.			SIZE	DWG. NO.	REV
FINISH	CUSTOMER:			A	PIJP-SHEET1	6
DO NOT SCALE DRAWING				SCALE: 1:6	WEIGHT:	SHEET 1 OF 4

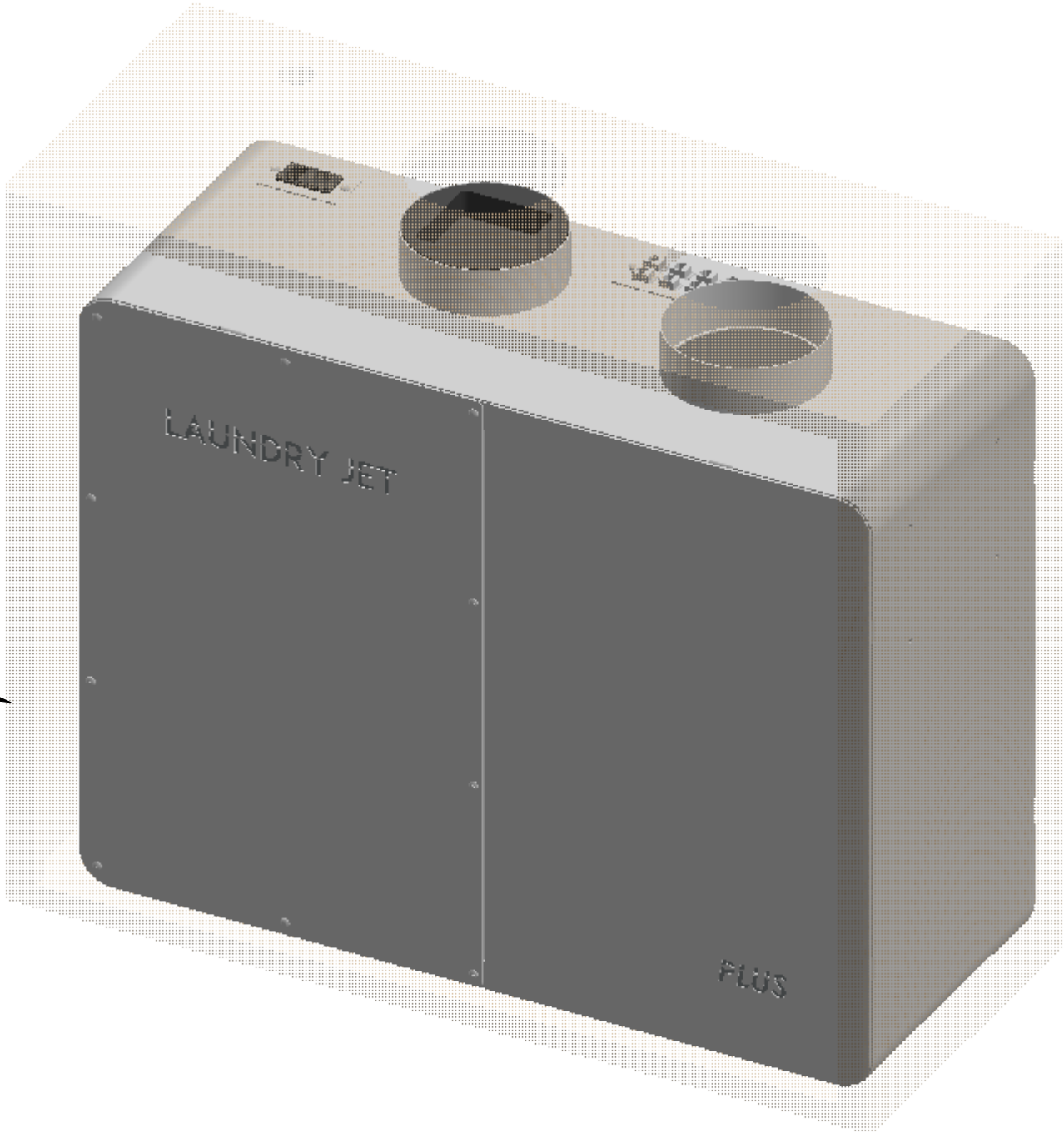




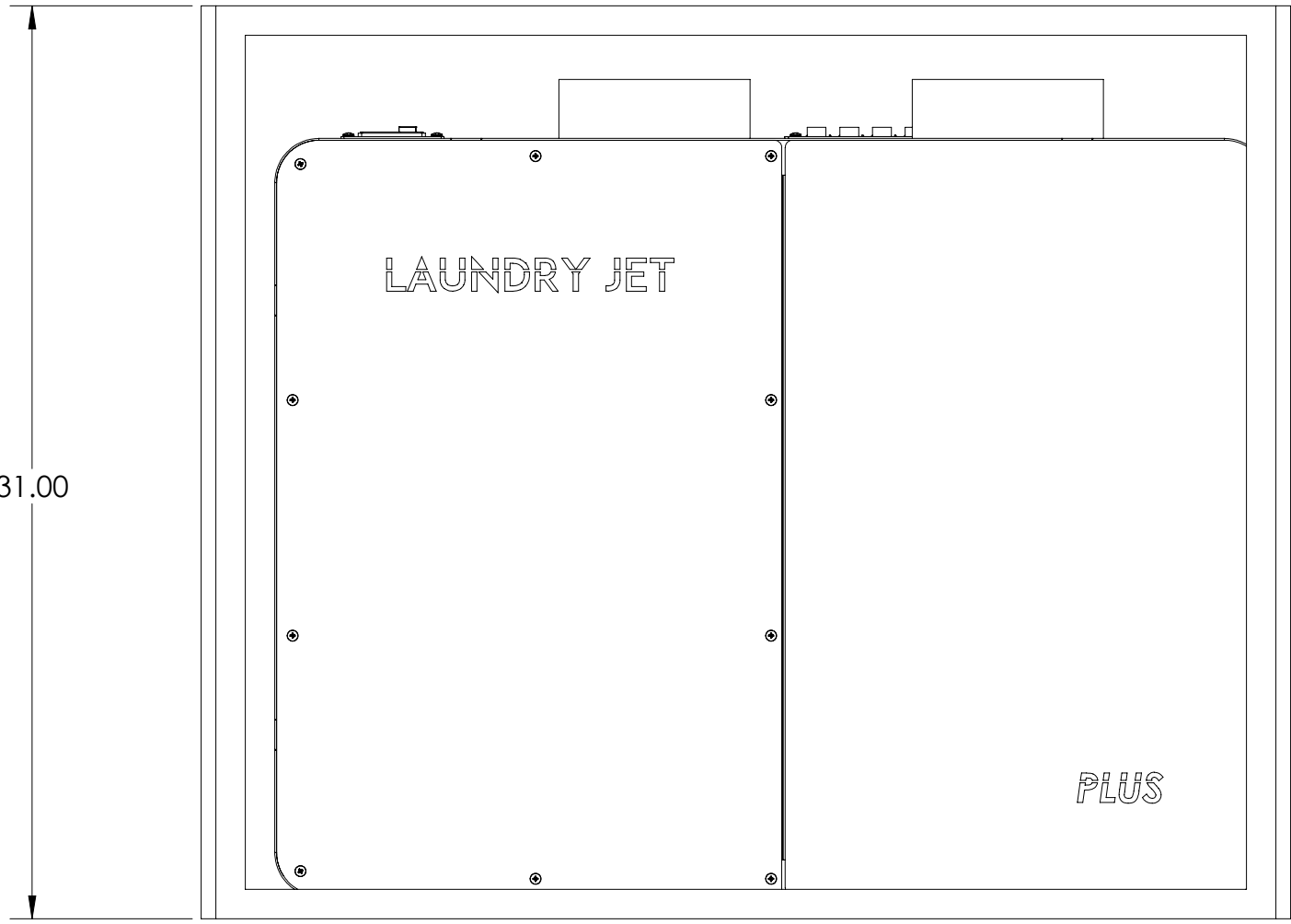
Defined Spacing is minimum requirement for insertion of the Insert Jet Pack Assembly. It is recommended that additional spacing be allowed for easy installation where possible.



Plus Insert Cabinet Detail



Cabinet can be finished using a typical single door or double door styles.



PROPRIETARY AND CONFIDENTIAL
THE INFORMATION CONTAINED IN THIS DRAWING IS THE SOLE PROPERTY OF **LAUNDRY JET**. ANY REPRODUCTION IN PART OR AS A WHOLE WITHOUT THE WRITTEN PERMISSION OF **LAUNDRY JET** IS PROHIBITED.

UNLESS OTHERWISE SPECIFIED:		NAME	DATE	<div>LAUNDRY JET</div> <div>TITLE: Plus Insert Jet Pack Engineering Prints</div> <div>SIZE A DWG. NO. PIJP-SHEET4 REV 6</div> <div>SCALE: 1:6 WEIGHT: SHEET 4 OF 4</div>			
DIMENSIONS ARE IN INCHES TOLERANCES: FRACTIONAL ± ANGULAR: MACH ± BEND ± TWO PLACE DECIMAL ± THREE PLACE DECIMAL ±	DRAWN	CW	6.23.21				
	CHECKED	DH	6.23.21				
	ENG APPR.	DH	6.23.21				
MATERIAL	MFG APPR.						
	Q.A.						
FINISH	CUSTOMER:						
DO NOT SCALE DRAWING							