

MANUFACTURED BY THE MANUFACTURER'S TRADE ASSOCIATION

REVISIONS
NO. DATE BY
1. 01/15/21 JRM
2. 01/15/21 JRM
3. 01/15/21 JRM
4. 01/15/21 JRM
5. 01/15/21 JRM
6. 01/15/21 JRM
7. 01/15/21 JRM
8. 01/15/21 JRM
9. 01/15/21 JRM
10. 01/15/21 JRM

INTEL BEAM
STANDARD SPEC-0817 UNLESS NOTED OTHERWISE
AT WINDOWS, DOORS & OPENINGS SPEC-0817 (TYR, UNL.)
NOTE:
1. PRECAST INTELS SHALL BE MANUFACTURED BY
CAST-CONCRETE OF FLA.
2. BOTTOM OF PRECAST TO BE AT FINISH FLOORING
HEIGHT. SEE WINDOW, DOOR SCHEDULES BELOW.

NOTES
1. ALL WORK SHALL BE IN ACCORDANCE WITH THE LATEST EDITIONS OF THE INTERNATIONAL BUILDING CODES (IBC) AND THE INTERNATIONAL RESIDENTIAL CODE BOOK (IRC).
2. ALL WORK SHALL BE IN ACCORDANCE WITH THE LATEST EDITIONS OF THE FLORIDA BUILDING CODE (FBC) AND THE FLORIDA RESIDENTIAL CODE BOOK (FRCB).
3. ALL WORK SHALL BE IN ACCORDANCE WITH THE LATEST EDITIONS OF THE FLORIDA MECHANICAL, ELECTRICAL AND PLUMBING CODES (FM, FE, FP).
4. ALL WORK SHALL BE IN ACCORDANCE WITH THE LATEST EDITIONS OF THE FLORIDA ENERGY EFFICIENT BUILDING CODE (FEEBC).
5. ALL WORK SHALL BE IN ACCORDANCE WITH THE LATEST EDITIONS OF THE FLORIDA SOIL BUILDING CODE (FSBC).
6. ALL WORK SHALL BE IN ACCORDANCE WITH THE LATEST EDITIONS OF THE FLORIDA WIND RESISTANCE DESIGN AND CONSTRUCTION CODE (FWRDC).
7. ALL WORK SHALL BE IN ACCORDANCE WITH THE LATEST EDITIONS OF THE FLORIDA FLOOD DAMAGE PREVENTION AND MITIGATION CODE (FFDPM).
8. ALL WORK SHALL BE IN ACCORDANCE WITH THE LATEST EDITIONS OF THE FLORIDA FIRE AND LIFE SAFETY CODE (FLLS).
9. ALL WORK SHALL BE IN ACCORDANCE WITH THE LATEST EDITIONS OF THE FLORIDA HEALTH AND SAFETY CODE (FHSC).
10. ALL WORK SHALL BE IN ACCORDANCE WITH THE LATEST EDITIONS OF THE FLORIDA ENVIRONMENTAL PROTECTION CODE (FEP).
11. ALL WORK SHALL BE IN ACCORDANCE WITH THE LATEST EDITIONS OF THE FLORIDA HISTORIC PRESERVATION CODE (FHP).
12. ALL WORK SHALL BE IN ACCORDANCE WITH THE LATEST EDITIONS OF THE FLORIDA CULTURAL HERITAGE CODE (FCH).
13. ALL WORK SHALL BE IN ACCORDANCE WITH THE LATEST EDITIONS OF THE FLORIDA ARCHITECTURAL HISTORY CODE (FAH).
14. ALL WORK SHALL BE IN ACCORDANCE WITH THE LATEST EDITIONS OF THE FLORIDA LANDmarks CODE (FLM).
15. ALL WORK SHALL BE IN ACCORDANCE WITH THE LATEST EDITIONS OF THE FLORIDA HISTORIC LANDmarks CODE (FLHL).
16. ALL WORK SHALL BE IN ACCORDANCE WITH THE LATEST EDITIONS OF THE FLORIDA HISTORIC ARCHITECTURE CODE (FLHA).
17. ALL WORK SHALL BE IN ACCORDANCE WITH THE LATEST EDITIONS OF THE FLORIDA HISTORIC LANDmarks PRESERVATION CODE (FLHLP).
18. ALL WORK SHALL BE IN ACCORDANCE WITH THE LATEST EDITIONS OF THE FLORIDA HISTORIC ARCHITECTURE PRESERVATION CODE (FLHAP).
19. ALL WORK SHALL BE IN ACCORDANCE WITH THE LATEST EDITIONS OF THE FLORIDA HISTORIC LANDmarks PRESERVATION AND ARCHITECTURE CODE (FLHLP&A).
20. ALL WORK SHALL BE IN ACCORDANCE WITH THE LATEST EDITIONS OF THE FLORIDA HISTORIC ARCHITECTURE PRESERVATION AND ARCHITECTURE CODE (FLHAP&A).

WINDOW SCHEDULE

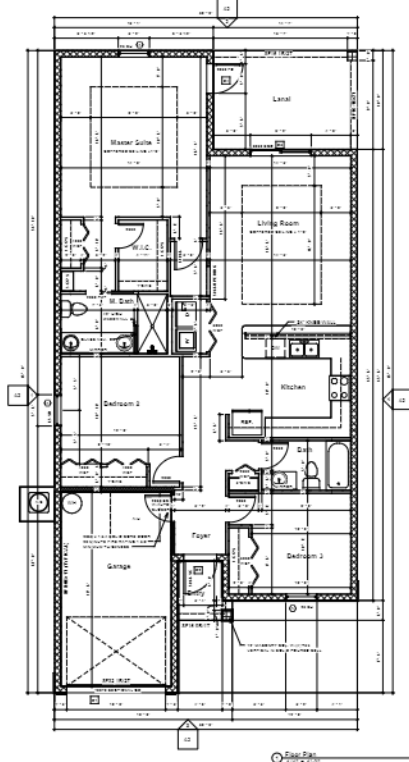
NO.	TYPE	FINISH	GLASS	OPERATION	SCREEN	SHUTTERS	REMARKS
1	1	1	1	1	1	1	1

DOOR SCHEDULE

NO.	TYPE	FINISH	OPERATION	REMARKS
1	1	1	1	1

SOIL SCHEDULE

NO.	TYPE	FINISH	REMARKS
1	1	1	1



SQUARE FOOTAGE A

Living Area	1000
Garage Area	200
Other Areas	100
TOTAL	1300

ALLOWABLE SOIL LOAD:
THIS PROJECT IS BEING SUBMITTED TO THE FLORIDA DEPARTMENT OF TRANSPORTATION AND CONSTRUCTION FOR REVIEW AND APPROVAL. THE ALLOWABLE SOIL LOAD IS 2000 PSF. THE DESIGNER HAS ASSUMED THAT THE SOIL IS SUITABLE FOR THIS LOAD. THE DESIGNER HAS NOT CONDUCTED A SOIL TEST. THE DESIGNER HAS NOT CONDUCTED A FOUNDATION ANALYSIS. THE DESIGNER HAS NOT CONDUCTED A FOUNDATION DESIGN. THE DESIGNER HAS NOT CONDUCTED A FOUNDATION CONSTRUCTION. THE DESIGNER HAS NOT CONDUCTED A FOUNDATION MAINTENANCE. THE DESIGNER HAS NOT CONDUCTED A FOUNDATION REPAIR. THE DESIGNER HAS NOT CONDUCTED A FOUNDATION REPLACEMENT. THE DESIGNER HAS NOT CONDUCTED A FOUNDATION REMOVAL. THE DESIGNER HAS NOT CONDUCTED A FOUNDATION DEMOLITION. THE DESIGNER HAS NOT CONDUCTED A FOUNDATION DESTRUCTION. THE DESIGNER HAS NOT CONDUCTED A FOUNDATION ABANDONMENT. THE DESIGNER HAS NOT CONDUCTED A FOUNDATION RESTORATION. THE DESIGNER HAS NOT CONDUCTED A FOUNDATION PRESERVATION. THE DESIGNER HAS NOT CONDUCTED A FOUNDATION PROTECTION. THE DESIGNER HAS NOT CONDUCTED A FOUNDATION ENHANCEMENT. THE DESIGNER HAS NOT CONDUCTED A FOUNDATION IMPROVEMENT. THE DESIGNER HAS NOT CONDUCTED A FOUNDATION OPTIMIZATION. THE DESIGNER HAS NOT CONDUCTED A FOUNDATION MAXIMIZATION. THE DESIGNER HAS NOT CONDUCTED A FOUNDATION MINIMIZATION. THE DESIGNER HAS NOT CONDUCTED A FOUNDATION ELIMINATION. THE DESIGNER HAS NOT CONDUCTED A FOUNDATION TRANSFORMATION. THE DESIGNER HAS NOT CONDUCTED A FOUNDATION REINFORCEMENT. THE DESIGNER HAS NOT CONDUCTED A FOUNDATION STRENGTHENING. THE DESIGNER HAS NOT CONDUCTED A FOUNDATION STABILIZATION. THE DESIGNER HAS NOT CONDUCTED A FOUNDATION SECUREMENT. THE DESIGNER HAS NOT CONDUCTED A FOUNDATION ANCHORING. THE DESIGNER HAS NOT CONDUCTED A FOUNDATION BOLTING. THE DESIGNER HAS NOT CONDUCTED A FOUNDATION BRACING. THE DESIGNER HAS NOT CONDUCTED A FOUNDATION SHORING. THE DESIGNER HAS NOT CONDUCTED A FOUNDATION SCAFFOLDING. THE DESIGNER HAS NOT CONDUCTED A FOUNDATION FORMWORK. THE DESIGNER HAS NOT CONDUCTED A FOUNDATION CURING. THE DESIGNER HAS NOT CONDUCTED A FOUNDATION PROTECTIVE COATING. THE DESIGNER HAS NOT CONDUCTED A FOUNDATION SEALING. THE DESIGNER HAS NOT CONDUCTED A FOUNDATION WATERPROOFING. THE DESIGNER HAS NOT CONDUCTED A FOUNDATION DRAINAGE. THE DESIGNER HAS NOT CONDUCTED A FOUNDATION VENTILATION. THE DESIGNER HAS NOT CONDUCTED A FOUNDATION INSULATION. THE DESIGNER HAS NOT CONDUCTED A FOUNDATION SOUNDPROOFING. THE DESIGNER HAS NOT CONDUCTED A FOUNDATION FIREPROOFING. THE DESIGNER HAS NOT CONDUCTED A FOUNDATION ANTI-CORROSION. THE DESIGNER HAS NOT CONDUCTED A FOUNDATION ANTI-TERMITE. THE DESIGNER HAS NOT CONDUCTED A FOUNDATION ANTI-MOLD. THE DESIGNER HAS NOT CONDUCTED A FOUNDATION ANTI-BACTERIAL. THE DESIGNER HAS NOT CONDUCTED A FOUNDATION ANTI-VIRAL. THE DESIGNER HAS NOT CONDUCTED A FOUNDATION ANTI-TOXIC. THE DESIGNER HAS NOT CONDUCTED A FOUNDATION ANTI-CARCINOGENIC. THE DESIGNER HAS NOT CONDUCTED A FOUNDATION ANTI-MUTAGENIC. THE DESIGNER HAS NOT CONDUCTED A FOUNDATION ANTI-TERATOGENIC. THE DESIGNER HAS NOT CONDUCTED A FOUNDATION ANTI-REPRODUCTIVE TOXIC. THE DESIGNER HAS NOT CONDUCTED A FOUNDATION ANTI-IMMUNOSUPPRESSIVE. THE DESIGNER HAS NOT CONDUCTED A FOUNDATION ANTI-NEUROLOGIC. THE DESIGNER HAS NOT CONDUCTED A FOUNDATION ANTI-PNEUMONIC. THE DESIGNER HAS NOT CONDUCTED A FOUNDATION ANTI-ASTHMATIC. THE DESIGNER HAS NOT CONDUCTED A FOUNDATION ANTI-ALLERGIC. THE DESIGNER HAS NOT CONDUCTED A FOUNDATION ANTI-IMMUNE. THE DESIGNER HAS NOT CONDUCTED A FOUNDATION ANTI-INFLAMMATORY. THE DESIGNER HAS NOT CONDUCTED A FOUNDATION ANTI-PAIN. THE DESIGNER HAS NOT CONDUCTED A FOUNDATION ANTI-FEVER. THE DESIGNER HAS NOT CONDUCTED A FOUNDATION ANTI-CHILLS. THE DESIGNER HAS NOT CONDUCTED A FOUNDATION ANTI-SWEATS. THE DESIGNER HAS NOT CONDUCTED A FOUNDATION ANTI-HEADACHE. THE DESIGNER HAS NOT CONDUCTED A FOUNDATION ANTI-MIGRAINE. THE DESIGNER HAS NOT CONDUCTED A FOUNDATION ANTI-DIZZINESS. THE DESIGNER HAS NOT CONDUCTED A FOUNDATION ANTI-DROWSINESS. THE DESIGNER HAS NOT CONDUCTED A FOUNDATION ANTI-CONFUSION. THE DESIGNER HAS NOT CONDUCTED A FOUNDATION ANTI-AMNESIA. THE DESIGNER HAS NOT CONDUCTED A FOUNDATION ANTI-DEPRESSION. THE DESIGNER HAS NOT CONDUCTED A FOUNDATION ANTI-ANXIETY. THE DESIGNER HAS NOT CONDUCTED A FOUNDATION ANTI-OBSESSION. THE DESIGNER HAS NOT CONDUCTED A FOUNDATION ANTI-COMPULSION. THE DESIGNER HAS NOT CONDUCTED A FOUNDATION ANTI-IMPULSION. THE DESIGNER HAS NOT CONDUCTED A FOUNDATION ANTI-AGGRESSION. THE DESIGNER HAS NOT CONDUCTED A FOUNDATION ANTI-RAGE. THE DESIGNER HAS NOT CONDUCTED A FOUNDATION ANTI-ANGER. THE DESIGNER HAS NOT CONDUCTED A FOUNDATION ANTI-HATRED. THE DESIGNER HAS NOT CONDUCTED A FOUNDATION ANTI-LOATHING. THE DESIGNER HAS NOT CONDUCTED A FOUNDATION ANTI-DESPISE. THE DESIGNER HAS NOT CONDUCTED A FOUNDATION ANTI-SCORN. THE DESIGNER HAS NOT CONDUCTED A FOUNDATION ANTI-CONTEMPT. THE DESIGNER HAS NOT CONDUCTED A FOUNDATION ANTI-DESPISE. THE DESIGNER HAS NOT CONDUCTED A FOUNDATION ANTI-SCORN. THE DESIGNER HAS NOT CONDUCTED A FOUNDATION ANTI-CONTEMPT.

1410 Model 2021

Spec Plan

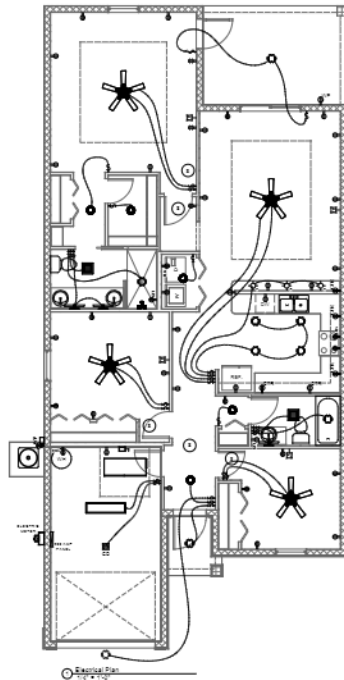
2115 Heavy Steel
1.1 Heavy, 1.1 3016

A1

SYMBOLS LEGEND	
SYMBOL	DESCRIPTION
⊕	110 VOLT OUTLET
⊖	110 VOLT GROUND FAULT INTERRUPTER
⊕ ⊖	110 VOLT SPLIT WIRE OUTLET
⊕ ⊖ ⊕	200 VOLT OUTLET
⊕ ⊖ ⊕ ⊖	110 VOLT GROUND FAULT INTERRUPTER AND 200 VOLT SPLIT WIRE OUTLET
⊕ ⊖ ⊕ ⊖ ⊕	110 VOLT WEATHER PROOF OUTLET
⊕ ⊖ ⊕ ⊖ ⊕ ⊖	SPECIAL PURPOSE OUTLET
⊕ ⊖ ⊕ ⊖ ⊕ ⊖ ⊕	FLOORS EIGHTY FIVE LIGHTING FIXTURE
⊕ ⊖ ⊕ ⊖ ⊕ ⊖ ⊕ ⊖	SURFACE MOUNTED FIXTURE
⊕ ⊖ ⊕ ⊖ ⊕ ⊖ ⊕ ⊖ ⊕	INTERIOR WALL MOUNTED FIXTURE
⊕ ⊖ ⊕ ⊖ ⊕ ⊖ ⊕ ⊖ ⊕ ⊖	RECESSED MOUNTED FIXTURE
⊕ ⊖ ⊕ ⊖ ⊕ ⊖ ⊕ ⊖ ⊕ ⊖ ⊕	JOINT BOX
⊕ ⊖ ⊕ ⊖ ⊕ ⊖ ⊕ ⊖ ⊕ ⊖ ⊕ ⊖	SMOKE DETECTOR & CO. SENSOR
⊕ ⊖ ⊕ ⊖ ⊕ ⊖ ⊕ ⊖ ⊕ ⊖ ⊕ ⊖ ⊕	TELEVISION OUTLET
⊕ ⊖ ⊕ ⊖ ⊕ ⊖ ⊕ ⊖ ⊕ ⊖ ⊕ ⊖ ⊕ ⊖	TELEPHONE JACK
⊕ ⊖ ⊕ ⊖ ⊕ ⊖ ⊕ ⊖ ⊕ ⊖ ⊕ ⊖ ⊕ ⊖ ⊕	PUSH BUTTON DOOR CHIME
⊕ ⊖ ⊕ ⊖ ⊕ ⊖ ⊕ ⊖ ⊕ ⊖ ⊕ ⊖ ⊕ ⊖ ⊕ ⊕	DUPLICATE FLOODLIGHT
⊕ ⊖ ⊕ ⊖ ⊕ ⊖ ⊕ ⊖ ⊕ ⊖ ⊕ ⊖ ⊕ ⊖ ⊕ ⊕ ⊕	EMERGENCY FAN LIGHT COMBINO.
⊕ ⊖ ⊕ ⊖ ⊕ ⊖ ⊕ ⊖ ⊕ ⊖ ⊕ ⊖ ⊕ ⊖ ⊕ ⊕ ⊕ ⊕	SINGLE POLE SWITCH
⊕ ⊖ ⊕ ⊖ ⊕ ⊖ ⊕ ⊖ ⊕ ⊖ ⊕ ⊖ ⊕ ⊖ ⊕ ⊕ ⊕ ⊕ ⊕	THREE WAY SWITCH
⊕ ⊖ ⊕ ⊖ ⊕ ⊖ ⊕ ⊖ ⊕ ⊖ ⊕ ⊖ ⊕ ⊖ ⊕ ⊕ ⊕ ⊕ ⊕ ⊕	CEILING FAN PREWIRE ONLY
⊕ ⊖ ⊕ ⊖ ⊕ ⊖ ⊕ ⊖ ⊕ ⊖ ⊕ ⊖ ⊕ ⊖ ⊕ ⊕ ⊕ ⊕ ⊕ ⊕ ⊕	CEILING FAN PREWIRE AND INSTALLED FAN PURCHASED BY OWNER

NOTES:

1. ALL WORK SHALL BE IN ACCORDANCE WITH THE LATEST EDITIONS OF THE NATIONAL ELECTRICAL CODE (NEC) AND THE NATIONAL FIRE ALARM AND SIGNAL CODE (NFPA 72).
2. ALL WORK SHALL BE IN ACCORDANCE WITH THE LATEST EDITIONS OF THE NATIONAL MECHANICAL CODE (NMC) AND THE NATIONAL PLUMBING CODE (NPC).
3. ALL WORK SHALL BE IN ACCORDANCE WITH THE LATEST EDITIONS OF THE NATIONAL GAS CODE (NGC) AND THE NATIONAL SANITARY ENGINEERING CODE (NSPEC).
4. ALL WORK SHALL BE IN ACCORDANCE WITH THE LATEST EDITIONS OF THE NATIONAL PIPING CODE (NPC) AND THE NATIONAL BOILER AND PRESSURE VESSEL CODE (NBPC).
5. ALL WORK SHALL BE IN ACCORDANCE WITH THE LATEST EDITIONS OF THE NATIONAL CONSTRUCTION CODE (NCC) AND THE NATIONAL BUILDING CODE (NBC).
6. ALL WORK SHALL BE IN ACCORDANCE WITH THE LATEST EDITIONS OF THE NATIONAL ELECTRICAL CONTRACTING CODE (NECC) AND THE NATIONAL ELECTRICAL CONTRACTING ASSOCIATION (NECA) CODE.
7. ALL WORK SHALL BE IN ACCORDANCE WITH THE LATEST EDITIONS OF THE NATIONAL MECHANICAL CONTRACTING CODE (NMCC) AND THE NATIONAL MECHANICAL CONTRACTING ASSOCIATION (NMAC) CODE.
8. ALL WORK SHALL BE IN ACCORDANCE WITH THE LATEST EDITIONS OF THE NATIONAL GAS CONTRACTING CODE (NGCC) AND THE NATIONAL GAS CONTRACTING ASSOCIATION (NGCA) CODE.
9. ALL WORK SHALL BE IN ACCORDANCE WITH THE LATEST EDITIONS OF THE NATIONAL SANITARY ENGINEERING CONTRACTING CODE (NSECC) AND THE NATIONAL SANITARY ENGINEERING CONTRACTING ASSOCIATION (NSECA) CODE.
10. ALL WORK SHALL BE IN ACCORDANCE WITH THE LATEST EDITIONS OF THE NATIONAL PIPING CONTRACTING CODE (NPCC) AND THE NATIONAL PIPING CONTRACTING ASSOCIATION (NPCA) CODE.
11. ALL WORK SHALL BE IN ACCORDANCE WITH THE LATEST EDITIONS OF THE NATIONAL BOILER AND PRESSURE VESSEL CONTRACTING CODE (NBVCC) AND THE NATIONAL BOILER AND PRESSURE VESSEL CONTRACTING ASSOCIATION (NBVCA) CODE.
12. ALL WORK SHALL BE IN ACCORDANCE WITH THE LATEST EDITIONS OF THE NATIONAL CONSTRUCTION CONTRACTING CODE (NCCC) AND THE NATIONAL CONSTRUCTION CONTRACTING ASSOCIATION (NCCA) CODE.
13. ALL WORK SHALL BE IN ACCORDANCE WITH THE LATEST EDITIONS OF THE NATIONAL ELECTRICAL CONTRACTING ASSOCIATION (NECA) CODE.
14. ALL WORK SHALL BE IN ACCORDANCE WITH THE LATEST EDITIONS OF THE NATIONAL MECHANICAL CONTRACTING ASSOCIATION (NMAC) CODE.
15. ALL WORK SHALL BE IN ACCORDANCE WITH THE LATEST EDITIONS OF THE NATIONAL GAS CONTRACTING ASSOCIATION (NGCA) CODE.
16. ALL WORK SHALL BE IN ACCORDANCE WITH THE LATEST EDITIONS OF THE NATIONAL SANITARY ENGINEERING CONTRACTING ASSOCIATION (NSECA) CODE.
17. ALL WORK SHALL BE IN ACCORDANCE WITH THE LATEST EDITIONS OF THE NATIONAL PIPING CONTRACTING ASSOCIATION (NPCA) CODE.
18. ALL WORK SHALL BE IN ACCORDANCE WITH THE LATEST EDITIONS OF THE NATIONAL BOILER AND PRESSURE VESSEL CONTRACTING ASSOCIATION (NBVCA) CODE.
19. ALL WORK SHALL BE IN ACCORDANCE WITH THE LATEST EDITIONS OF THE NATIONAL CONSTRUCTION CONTRACTING ASSOCIATION (NCCA) CODE.
20. ALL WORK SHALL BE IN ACCORDANCE WITH THE LATEST EDITIONS OF THE NATIONAL ELECTRICAL CONTRACTING ASSOCIATION (NECA) CODE.



1410 Model 2021

Spec Plan

2115 Heron Street
T. Albert, FL 33016

E1

1410 Model 2021

Spec Plan

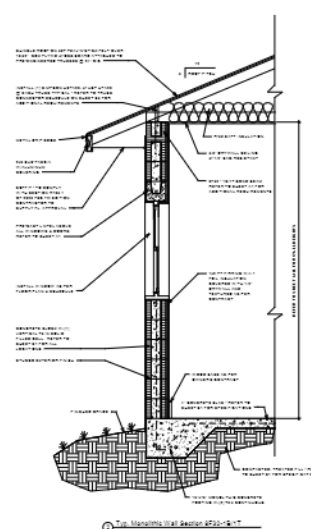
2115 Heron Street
T. Albert, FL 33016

1410 Model 2021

Spec Plan

2115 Heron Street
T. Albert, FL 33016

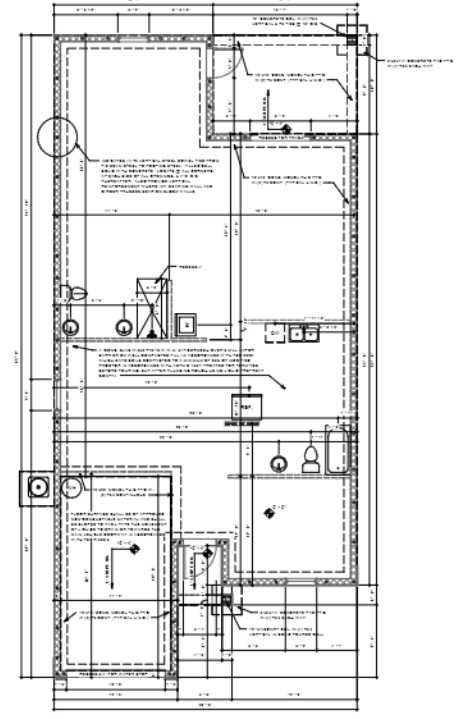
E1



Foundation Section #230-511
216 x 110

TERMITE PROTECTION

Termite protection shall be provided by registered pesticides or other approved methods of termite protection... (text continues with detailed specifications for termite protection, including application methods and materials).



Foundation
216 x 110

NOTE TO MASON CONTRACTOR:
THE MASON CONTRACTOR IS RESPONSIBLE FOR VERIFYING ALL DIMENSIONS AGAINST THE MANUFACTURER'S SPEC. PRIOR TO CONSTRUCTION.

ALLOWABLE SOIL LOAD:
THE ALLOWABLE SOIL LOAD IS 10,000 LBS PER SQ FT. THE CONTRACTOR SHALL VERIFY THE SOIL BEARING CAPACITY PRIOR TO CONSTRUCTION.

MANUFACTURER'S SPECIFICATION #230-511

1410 Model 2021

Spec Plan

2115 Heron Street
Tallahassee, FL 32306

S1

DATE: 10/15/2021

PROJECT: 2115 HERON STREET

DESIGNER: J. R. PROCTOR

SCALE: AS SHOWN

GENERAL & STRUCTURAL NOTES

GENERAL NOTES

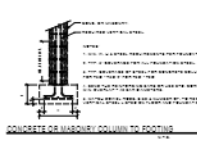
1. The contractor shall be responsible for obtaining all necessary permits and approvals for the construction of the building.
2. The contractor shall be responsible for the construction of the building in accordance with the approved plans and specifications.
3. The contractor shall be responsible for the construction of the building in accordance with the approved plans and specifications.
4. The contractor shall be responsible for the construction of the building in accordance with the approved plans and specifications.
5. The contractor shall be responsible for the construction of the building in accordance with the approved plans and specifications.
6. The contractor shall be responsible for the construction of the building in accordance with the approved plans and specifications.
7. The contractor shall be responsible for the construction of the building in accordance with the approved plans and specifications.
8. The contractor shall be responsible for the construction of the building in accordance with the approved plans and specifications.
9. The contractor shall be responsible for the construction of the building in accordance with the approved plans and specifications.
10. The contractor shall be responsible for the construction of the building in accordance with the approved plans and specifications.
11. The contractor shall be responsible for the construction of the building in accordance with the approved plans and specifications.
12. The contractor shall be responsible for the construction of the building in accordance with the approved plans and specifications.
13. The contractor shall be responsible for the construction of the building in accordance with the approved plans and specifications.
14. The contractor shall be responsible for the construction of the building in accordance with the approved plans and specifications.
15. The contractor shall be responsible for the construction of the building in accordance with the approved plans and specifications.
16. The contractor shall be responsible for the construction of the building in accordance with the approved plans and specifications.
17. The contractor shall be responsible for the construction of the building in accordance with the approved plans and specifications.
18. The contractor shall be responsible for the construction of the building in accordance with the approved plans and specifications.
19. The contractor shall be responsible for the construction of the building in accordance with the approved plans and specifications.
20. The contractor shall be responsible for the construction of the building in accordance with the approved plans and specifications.

FOUNDATION

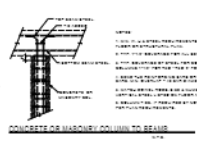
1. The foundation shall be constructed in accordance with the approved plans and specifications.
2. The foundation shall be constructed in accordance with the approved plans and specifications.
3. The foundation shall be constructed in accordance with the approved plans and specifications.
4. The foundation shall be constructed in accordance with the approved plans and specifications.
5. The foundation shall be constructed in accordance with the approved plans and specifications.
6. The foundation shall be constructed in accordance with the approved plans and specifications.
7. The foundation shall be constructed in accordance with the approved plans and specifications.
8. The foundation shall be constructed in accordance with the approved plans and specifications.
9. The foundation shall be constructed in accordance with the approved plans and specifications.
10. The foundation shall be constructed in accordance with the approved plans and specifications.
11. The foundation shall be constructed in accordance with the approved plans and specifications.
12. The foundation shall be constructed in accordance with the approved plans and specifications.
13. The foundation shall be constructed in accordance with the approved plans and specifications.
14. The foundation shall be constructed in accordance with the approved plans and specifications.
15. The foundation shall be constructed in accordance with the approved plans and specifications.
16. The foundation shall be constructed in accordance with the approved plans and specifications.
17. The foundation shall be constructed in accordance with the approved plans and specifications.
18. The foundation shall be constructed in accordance with the approved plans and specifications.
19. The foundation shall be constructed in accordance with the approved plans and specifications.
20. The foundation shall be constructed in accordance with the approved plans and specifications.

CONCRETE

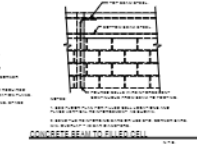
1. The concrete shall be constructed in accordance with the approved plans and specifications.
2. The concrete shall be constructed in accordance with the approved plans and specifications.
3. The concrete shall be constructed in accordance with the approved plans and specifications.
4. The concrete shall be constructed in accordance with the approved plans and specifications.
5. The concrete shall be constructed in accordance with the approved plans and specifications.
6. The concrete shall be constructed in accordance with the approved plans and specifications.
7. The concrete shall be constructed in accordance with the approved plans and specifications.
8. The concrete shall be constructed in accordance with the approved plans and specifications.
9. The concrete shall be constructed in accordance with the approved plans and specifications.
10. The concrete shall be constructed in accordance with the approved plans and specifications.
11. The concrete shall be constructed in accordance with the approved plans and specifications.
12. The concrete shall be constructed in accordance with the approved plans and specifications.
13. The concrete shall be constructed in accordance with the approved plans and specifications.
14. The concrete shall be constructed in accordance with the approved plans and specifications.
15. The concrete shall be constructed in accordance with the approved plans and specifications.
16. The concrete shall be constructed in accordance with the approved plans and specifications.
17. The concrete shall be constructed in accordance with the approved plans and specifications.
18. The concrete shall be constructed in accordance with the approved plans and specifications.
19. The concrete shall be constructed in accordance with the approved plans and specifications.
20. The concrete shall be constructed in accordance with the approved plans and specifications.



CONCRETE MASONRY COLUMN TO POSTING



CONCRETE MASONRY COLUMN TO BEAM



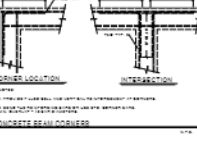
CONCRETE BEAM TO SLAB/DECK



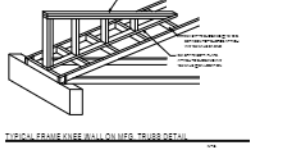
TYPICAL BRIDGE JOIST ATTACHMENT DETAIL



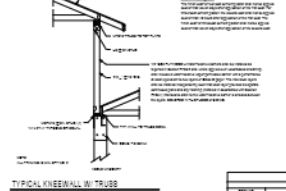
TYPICAL BRIDGE JOIST ATTACHMENT DETAIL



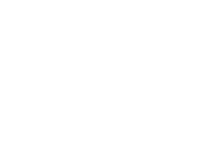
CONCRETE BEAM TO COLUMN



TYPICAL FRAME WALL OVER TRUSS DETAIL



TYPICAL KNEEWALL AT TRUSS

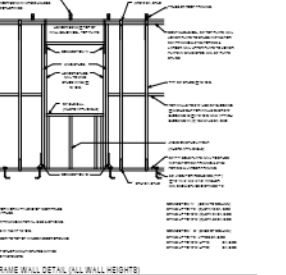


TYPICAL KNEEWALL AT TRUSS



TYPICAL KNEEWALL AT TRUSS

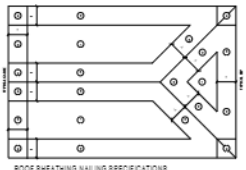
STEEL RODS			
GRADE	DIAMETER	LENGTH	QUANTITY
A36	1/2"	10'	10
A36	3/4"	10'	10
A36	1"	10'	10
A36	1 1/4"	10'	10
A36	1 1/2"	10'	10
A36	1 3/4"	10'	10
A36	2"	10'	10
A36	2 1/4"	10'	10
A36	2 1/2"	10'	10
A36	2 3/4"	10'	10
A36	3"	10'	10
A36	3 1/4"	10'	10
A36	3 1/2"	10'	10
A36	3 3/4"	10'	10
A36	4"	10'	10
A36	4 1/4"	10'	10
A36	4 1/2"	10'	10
A36	4 3/4"	10'	10
A36	5"	10'	10
A36	5 1/4"	10'	10
A36	5 1/2"	10'	10
A36	5 3/4"	10'	10
A36	6"	10'	10
A36	6 1/4"	10'	10
A36	6 1/2"	10'	10
A36	6 3/4"	10'	10
A36	7"	10'	10
A36	7 1/4"	10'	10
A36	7 1/2"	10'	10
A36	7 3/4"	10'	10
A36	8"	10'	10
A36	8 1/4"	10'	10
A36	8 1/2"	10'	10
A36	8 3/4"	10'	10
A36	9"	10'	10
A36	9 1/4"	10'	10
A36	9 1/2"	10'	10
A36	9 3/4"	10'	10
A36	10"	10'	10



TYPICAL BRG FRAME WALL DETAIL (ALL WALL HEIGHTS)



FRAME WALL PARALLEL TO TRUSS



ROOF SHEATHING NAILING SPECIFICATIONS

1410 Model 2021

Spec Plan

2115 Heron Street
Tallahassee, FL 32306

S2

DATE: 01/11/2021

DRAWN BY: J. B. BROWN

CHECKED BY: J. B. BROWN

APPROVED BY: J. B. BROWN

SCALE: AS SHOWN

PROJECT: 1410 Model 2021

SHEET: S2

TOTAL SHEETS: 10

DATE PLOTTED: 01/11/2021 10:00 AM

PLOTTER: HP DesignJet T1100

PLOT SIZE: 36" x 48"

PLOT SCALE: 1/8" = 1'-0"

PLOT ORIENTATION: Landscape

PLOT RANGE: Full

PLOT WEIGHT: 100 lbs

PLOT SPEED: 10 in/min

PLOT RESOLUTION: 600 dpi

PLOT LANGUAGE: PCL

PLOT COMMAND: plot

PLOT DEVICE: HP DesignJet T1100

PLOT FILE: 1410 Model 2021.dwg

PLOT PATH: C:\Users\jbbrown\OneDrive\Desktop

PLOT STATUS: Success

PLOT TIME: 01/11/2021 10:00 AM

PLOT USER: jbbrown

PLOT SYSTEM: Windows 10

PLOT VERSION: 1410 Model 2021

PLOT SHEET: S2

PLOT TOTAL: 10

PLOT SCALE: 1/8" = 1'-0"

PLOT ORIENTATION: Landscape

PLOT RANGE: Full

PLOT WEIGHT: 100 lbs

PLOT SPEED: 10 in/min

PLOT RESOLUTION: 600 dpi

PLOT LANGUAGE: PCL

PLOT COMMAND: plot

PLOT DEVICE: HP DesignJet T1100

PLOT FILE: 1410 Model 2021.dwg

PLOT PATH: C:\Users\jbbrown\OneDrive\Desktop

PLOT STATUS: Success

PLOT TIME: 01/11/2021 10:00 AM

PLOT USER: jbbrown

PLOT SYSTEM: Windows 10

PLOT VERSION: 1410 Model 2021

PLOT SHEET: S2

PLOT TOTAL: 10

