

VOL. 1
**FUNDRAISING
CATALOG**



**WELCOME TO
COPYCAT
BEAUTY
FUNDRAISER**

www.copycatbeauty.com

Follow Us on Instagram @copycatbeauty

Fundraising never looked so good!

BUNDLE INCLUDES:

- 1 DAZZLE EYESHADOW PALETTE
- 2 CRUELTY FREE EYESHADOW BRUSHES
- 1 LAVISH LIPGLOSS
- 1 VOLUMIZING / LENGTHENING MASCARA

CBFB



FEATURED BUNDLE

\$29.00 each

LAVISH LIPGLOSS



SAY HELLO TO OUR *Lavish* LIPGLOSSES! THESE GLOSSES HAVE A WEIGHTLESS FORMULA AND ARE FULLY PIGMENTED WITH A LUSTER FINISH.

*Compared to shades of ANASTASIA BEVERLY HILLS

\$7.00 each

AVAILABLE IN 6 SHADES:

NY12	NY09	NY11	NY07	NY08	NY14
CHAMPAGNE MULTIDIMENSIONAL REFLECT	IRIDESCENT PEACH WITH A SPARKLING PINK SHIFT	SHEER LAQUER WITH AN IRIDESCENT BLUE/PURPLE SHIFT	INTENSE PINK CHAMPAGNE MULTIDIMENSIONAL REFLECT	DUSTY ROSE WITH A GOLD REFLECT	CLEAR LACQUER WITH A GLOSSY HIGH SHINE

LIPSTICK



EACH AND EVERY PIGMENT SHADE IS MADE WITH A CREAMY RICH FORMULA THAT HAS A NO-SHINE MATTE FINISH.

*Compared to shades of MAC

\$5.00 each

AVAILABLE IN 5 SHADES:

GLIP09	GLIP10	GLIP02	GLIP01	GLIP03
VAMPY RED	MUTED PINK	WARM BEIGE	WARM PINK	BRIGHT RED

GLITTER EYESHADOW



THESE LIQUID GLITTER EYESHADOWS DELIVER A BOLD PUNCH OF GLITTER! THE FORMULA GLIDES ON EFFORTLESSLY, THEN DRIES DOWN AND LOCKS IN FOR MINIMAL FALL OUT.

*Compared to shades of STILA

\$8.00 each

AVAILABLE IN 4 SHADES:

LA01	LA21
A WARM GLISTENING COPPER	A SHEER BASE WITH GOLD GLITTER
LA03	LA22
A SHEER BASE WITH SILVER GLITTER	A SHEER BASE WITH IRIDESCENT INDIGO SHIFT



compared to shades of
Urban Decay

ES20 REVAMPED EYESHADOW PALETTE



12 Warm neutrals and
wearable shimmers.



\$14.00 each



compared to shades of
Anastasia Beverly Hills

ES19 MEDETERÉNA EYESHADOW PALETTE



14 Playful matte and
shimmer shades.



\$14.00 each

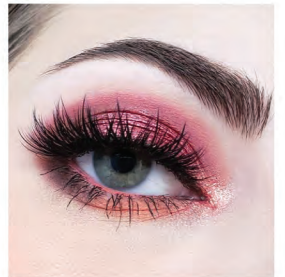


compared to shades of
Urban Decay

GES16 CHERRY BOMB EYESHADOW PALETTE



12 Shades with pops of
raspberry and bronze.



\$14.00 each



compared to shades of
Anastasia Beverly Hills

GES17 DAZZLE EYESHADOW PALETTE



14 Neutral mattes,
shimmers, and foiled
shades.



\$14.00 each

FACE MASKS

\$2.00 each

FM2



FM3



FM4



FM1



NOURISHING • HYDRATING • REPAIRING • PURIFYING

PREP AND SET TRIO



\$15.00 each

- INCLUDES:
- EYE PRIMER
 - SETTING SPRAY
 - FOUNDATION PRIMER

EYE ESSENTIALS

\$10.00 each

- INCLUDES:
- VOLUMIZING MASCARA
 - BLACK EYE LINER MARKER



TRIOSET

GTMA-GTEM



FULL FACE BRUSH SET

FEATURED BUNDLE



\$15.00 each

100% CRUELTY FREE
100% VEGAN

- INCLUDES:
- GT03 - POINTED POWDER BRUSH
 - GT07 - ANGLE BLUSH BRUSH
 - GT12 - CHISEL SHADER BRUSH
 - GT14 - CREASE BRUSH
 - GT17 - ANGLE LINER BRUSH

CBF5



\$29.00 each

- INCLUDES:
- LAVISH LIPGLOSS
 - DAZZLE EYESHADOW PALETTE
 - CRUELTY FREE EYESHADOW BRUSHES
 - VOLUMIZING / LENGTHENING MASCARA

CBFB