



Squantum School

Community Presentation

January 7, 2025

PROJECT TEAM



Massachusetts School Building Authority

Funding Affordable, Sustainable, and Efficient Schools in Partnership with Local Communities



OWNER'S PROJECT MANAGER



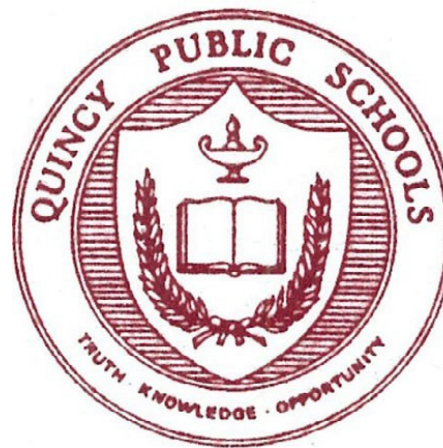
ARROWSTREET

ARCHITECTURE & DESIGN

ARCHITECT



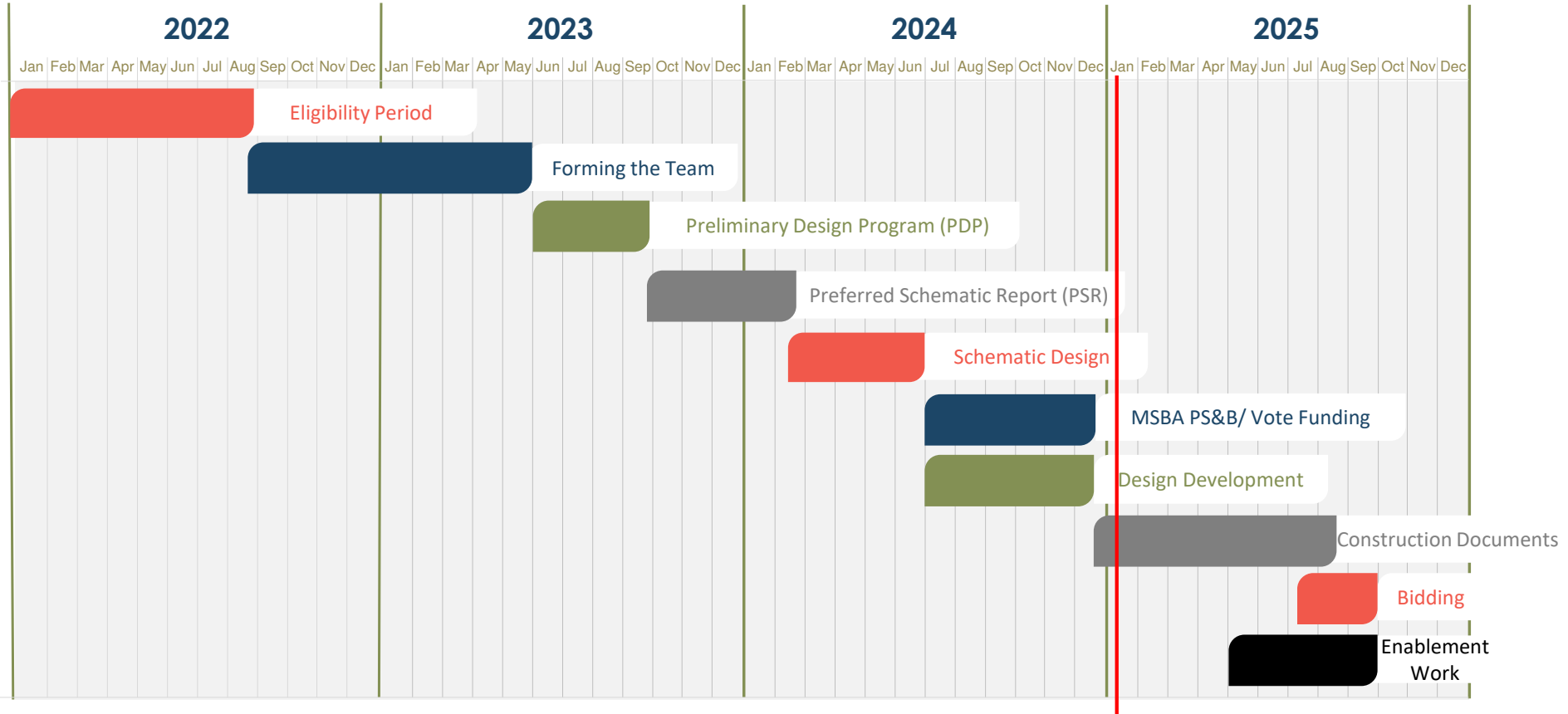
UTILITIES CONSTRUCTION MANAGER



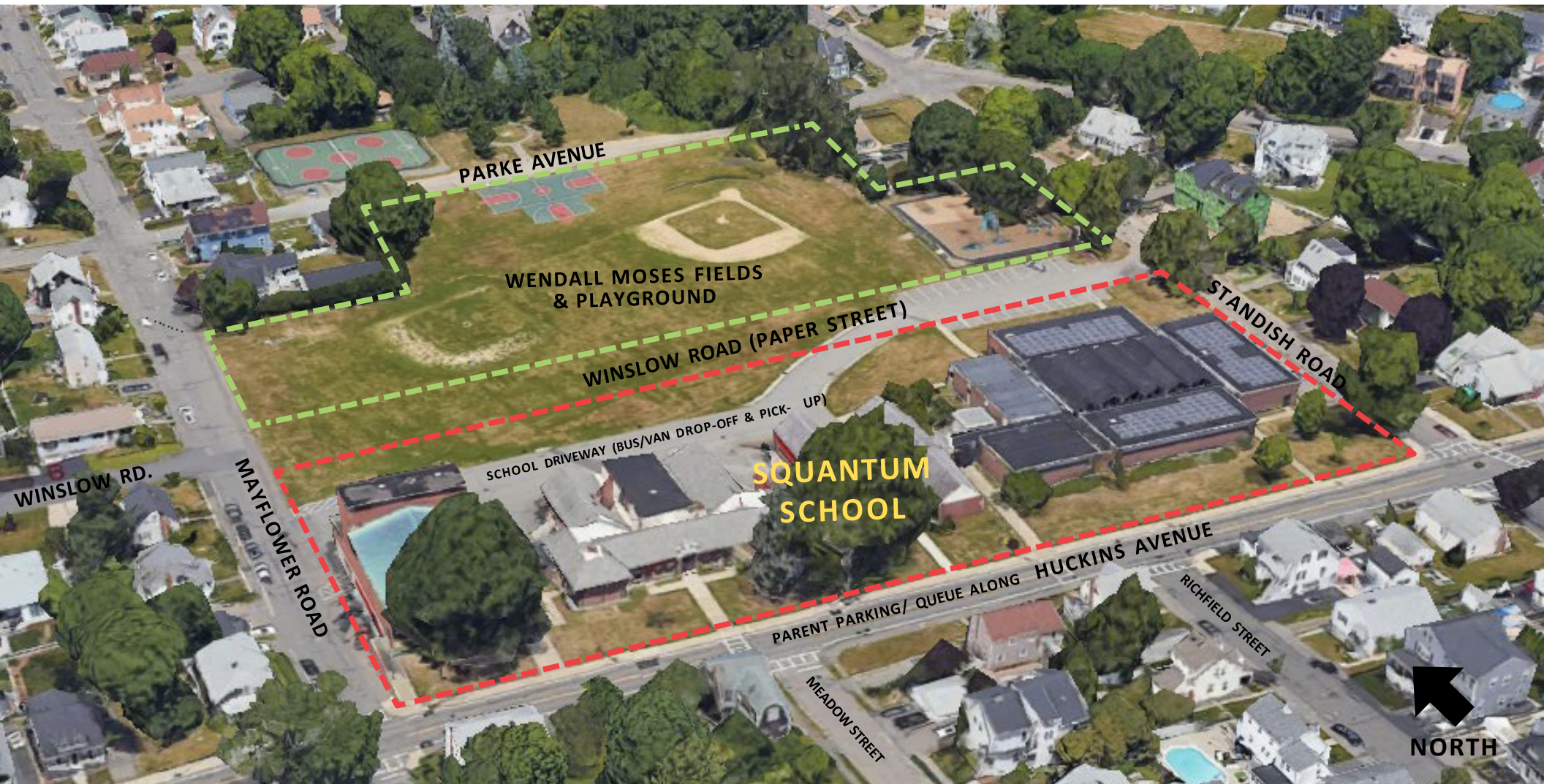
CONSTRUCTION MANAGER



Project Timeline



EXISTING SITE AND PROPERTY BOUNDARIES



SITE PLAN



**FLOOR PLAN
FIRST FLOOR**

NORTH ENTRANCE
Parent Drop-Off / Pick-up



EAST ENTRANCE
Bus & Van
Drop-Off / Pick-up

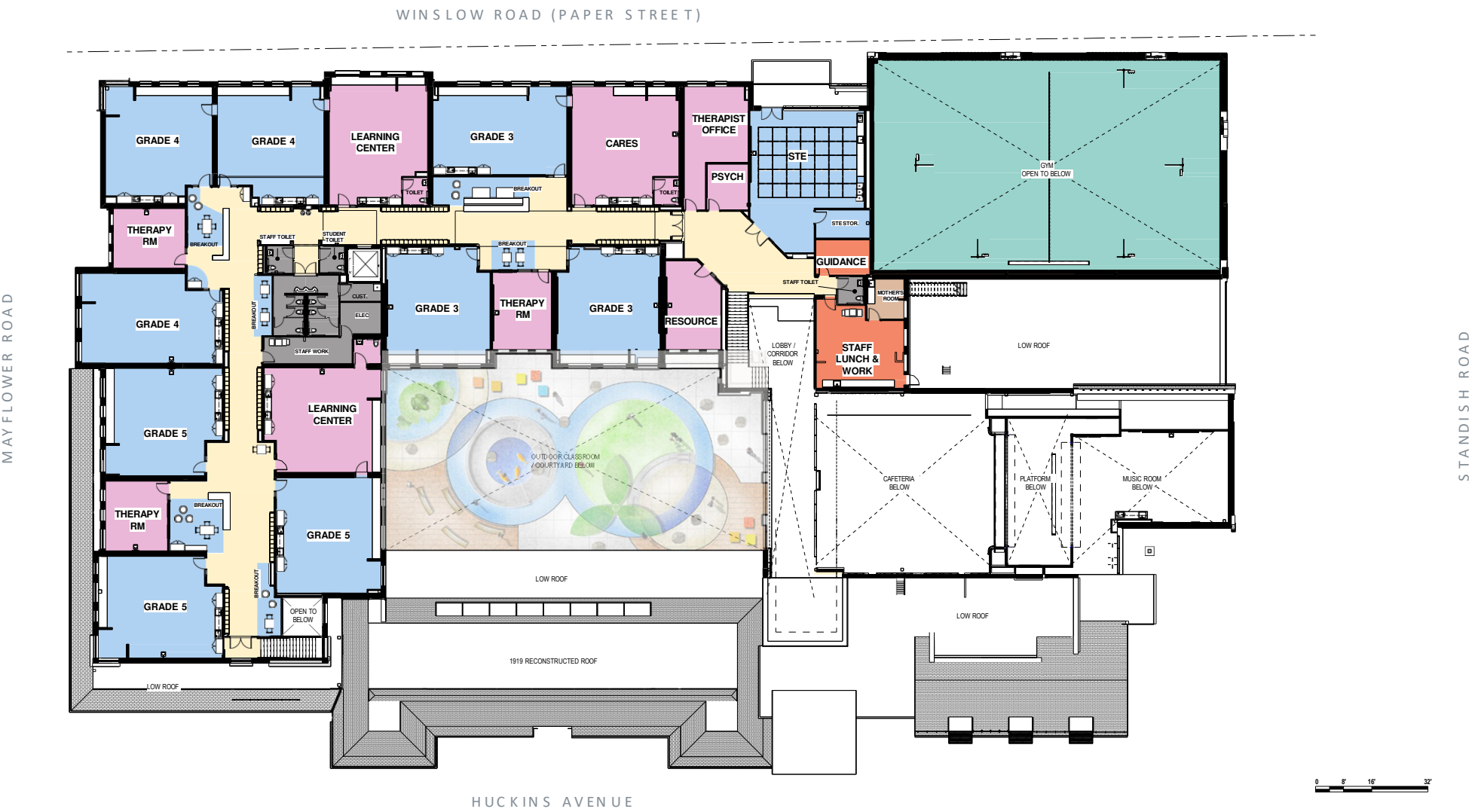
MAIN
ENTRANCE

HUCKINS AVENUE

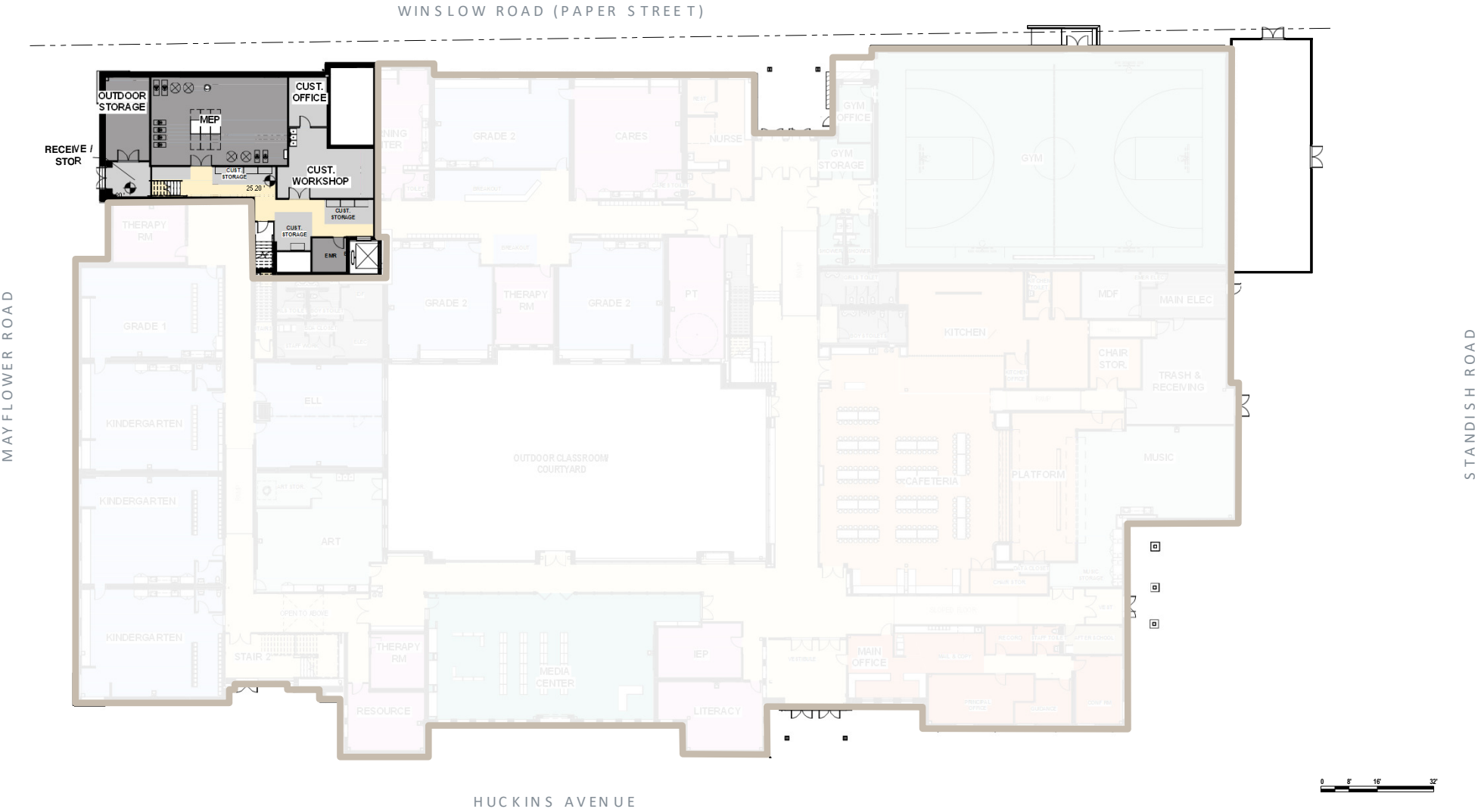
(STANDISH ROAD)

0 8' 16' 32'

FLOOR PLAN
SECOND FLOOR



FLOOR PLAN
BASEMENT FLOOR





EXTERIOR DESIGN STUDIES
SOUTH FACADE / HUCKINS AVENUE



EXTERIOR DESIGN STUDIES
SOUTHEAST CORNER



EXTERIOR DESIGN STUDIES
NORTHWEST CORNER / WINSLOW RD. & MAYFLOWER RD.

ARROWSTREET SQUANTUM SCHOOL / QUINCY, MA

COMMUNITY MEETING / JANUARY 2025

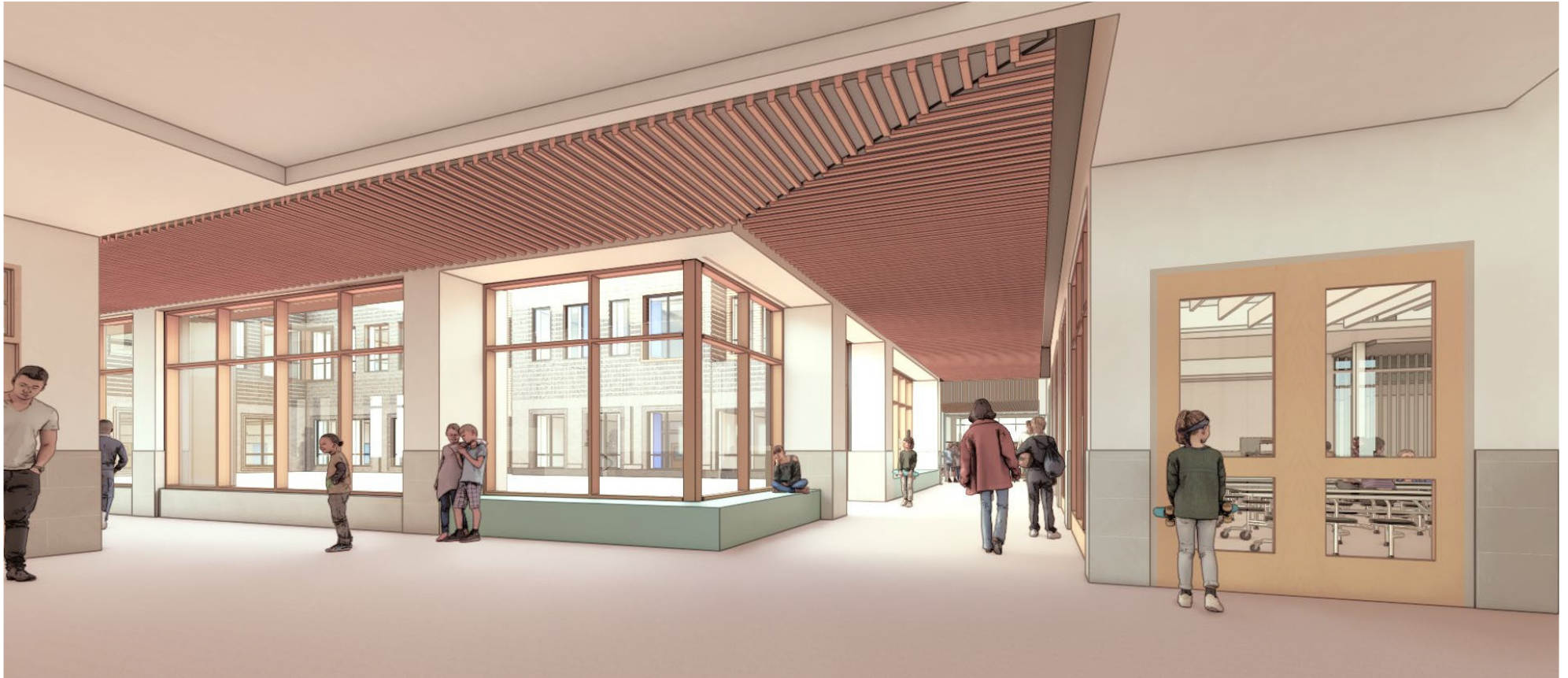


EXTERIOR DESIGN STUDIES
SOUTHWEST CORNER / MAYFLOWER RD. & HUCKINS AVE.

GYM DESIGN (FROM AUGUST)



INTERIOR STUDIES
MAIN LOBBY & MAIN STREET HALLWAY



INTERIOR STUDIES
MAIN STAIRS & MAIN STREET HALLWAY



INTERIOR
MEDIA CENTER



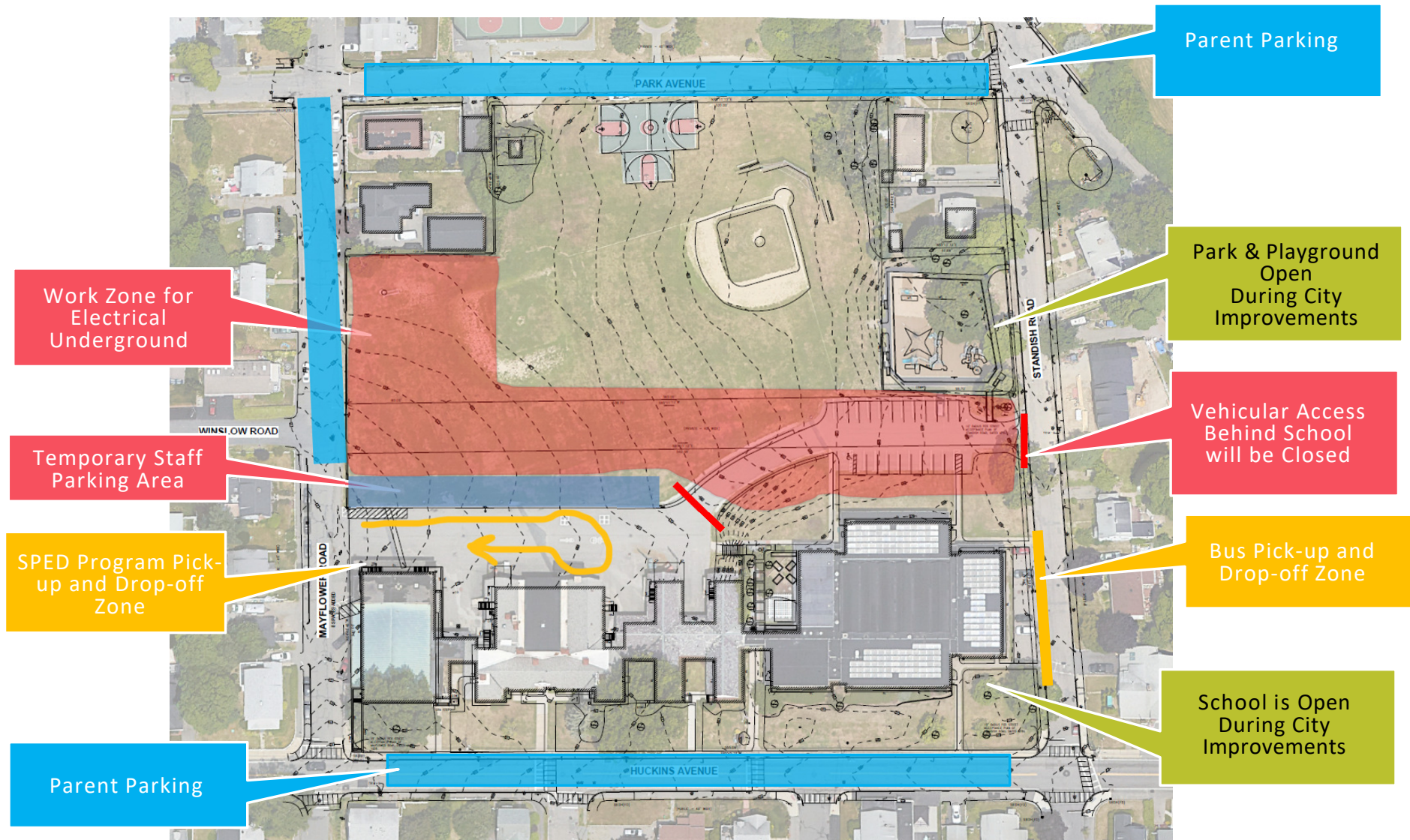
INTERIOR DAYLIGHT STUDY
CAFETERIA VIEW 2



GYM INTERIOR



CITY INFRASTRUCTURE WORK – PHASE 1 (January / February)



CITY INFRASTRUCTURE WORK – PHASE 2 (February / March)

Buses Will Pick-up and Drop-off as they currently do, work areas will only allow staff and buses through. Closed only for thru traffic.

Parent Parking

Park & Playground Limited at times during the day

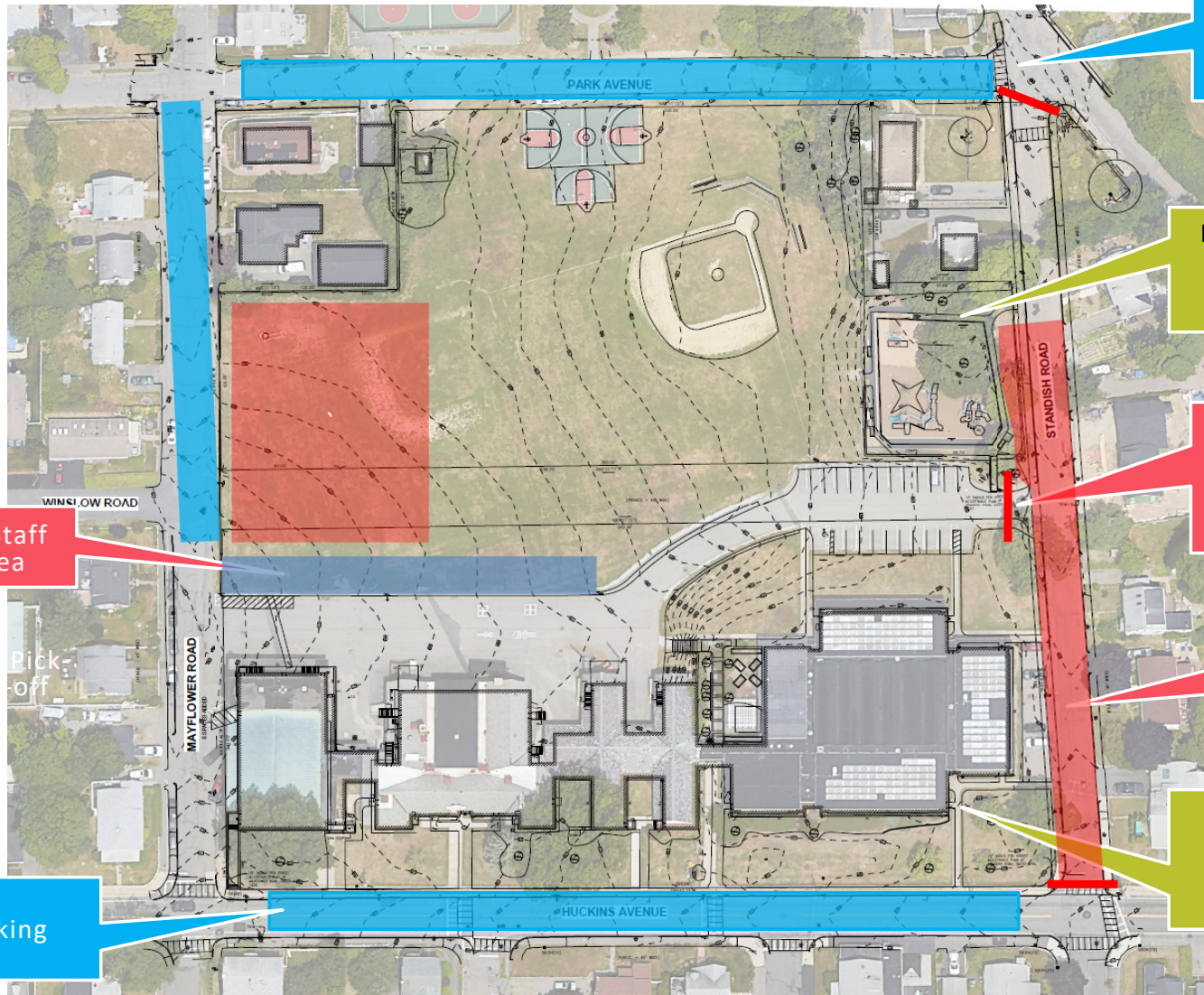
Vehicular Access Behind School will be Limited to Bus / Staff Only

Work Zone for Electrical Underground

School is Open During City Improvements

Temporary Staff Parking Area

Parent Parking



CITY INFRASTRUCTURE WORK – PHASE 3 (March)

Buses Will Pick-up and Drop-off as they currently do, work areas will only allow staff and buses through. Closed only for thru traffic.

Work Zone for Electrical Underground

Temporary Staff Parking Area

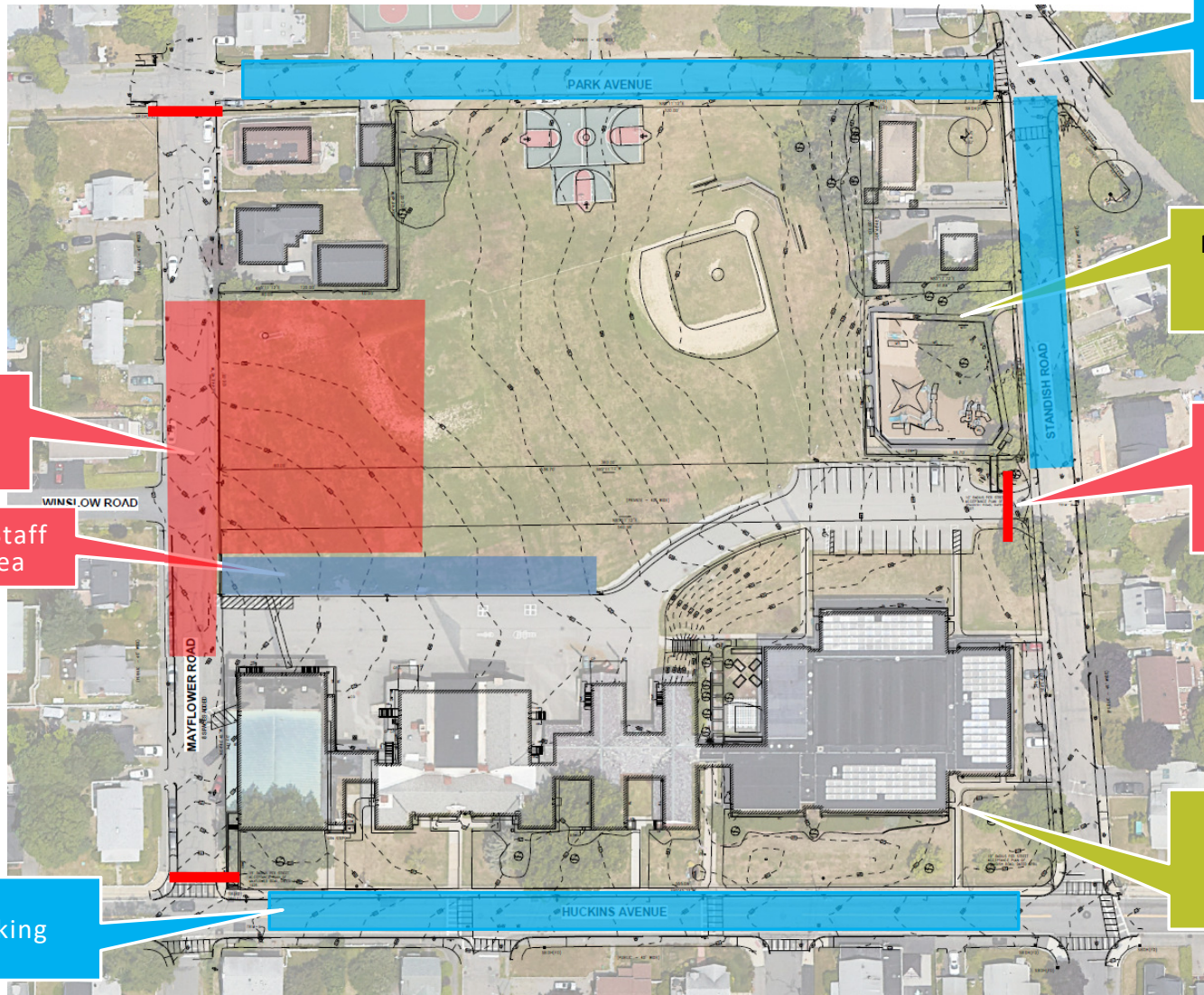
Parent Parking

Parent Parking

Park & Playground Open During City Improvements

Vehicular Access Behind School will be Limited to Bus / Staff Only

School is Open During City Improvements



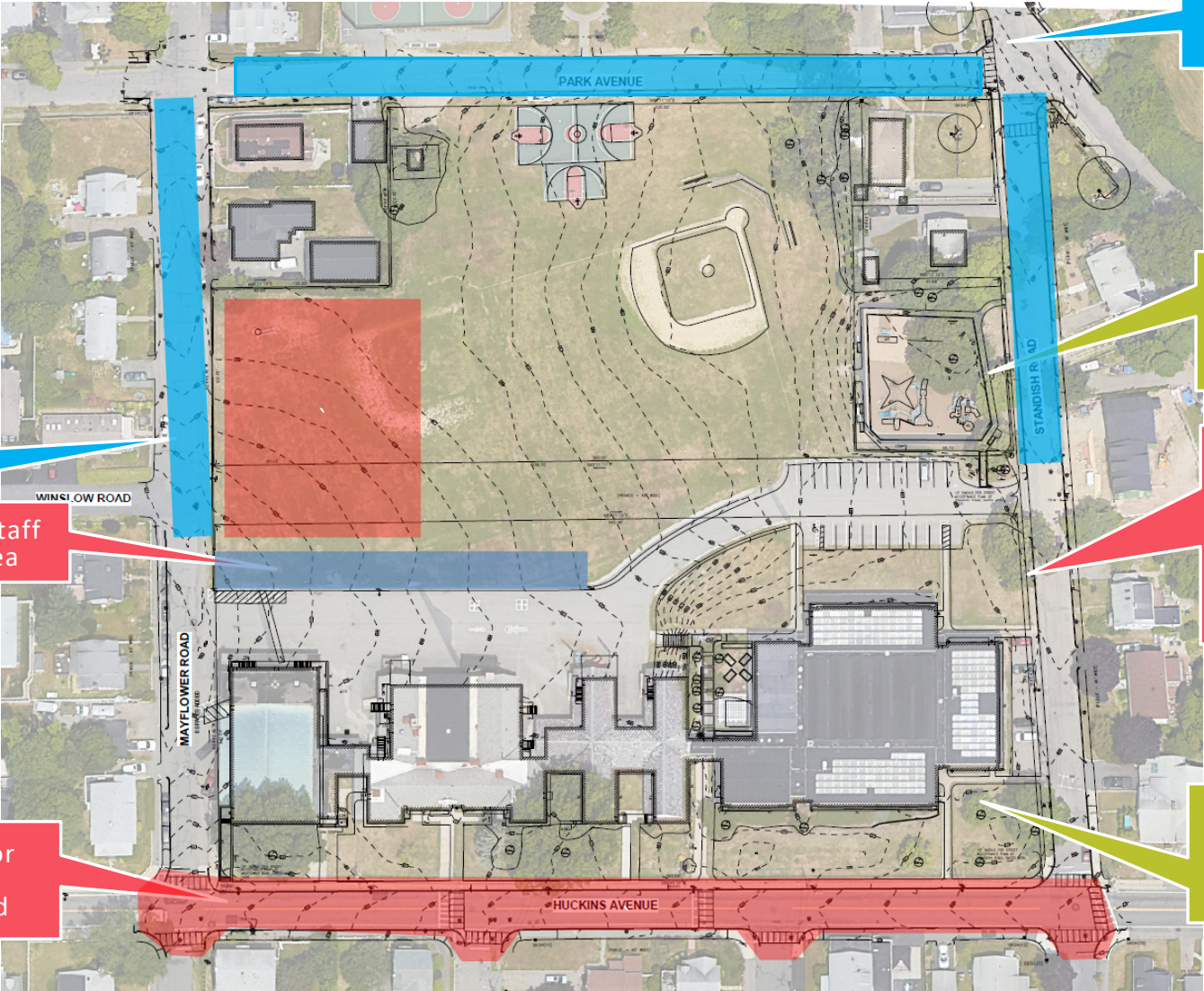
CITY INFRASTRUCTURE WORK – PHASE 4 (March / April)

Buses Will Pick-up and Drop-off as they currently do, work areas will only allow staff and buses through. Closed only for thru traffic.

Parent Parking

Temporary Staff Parking Area

Work Zone for Electrical Underground



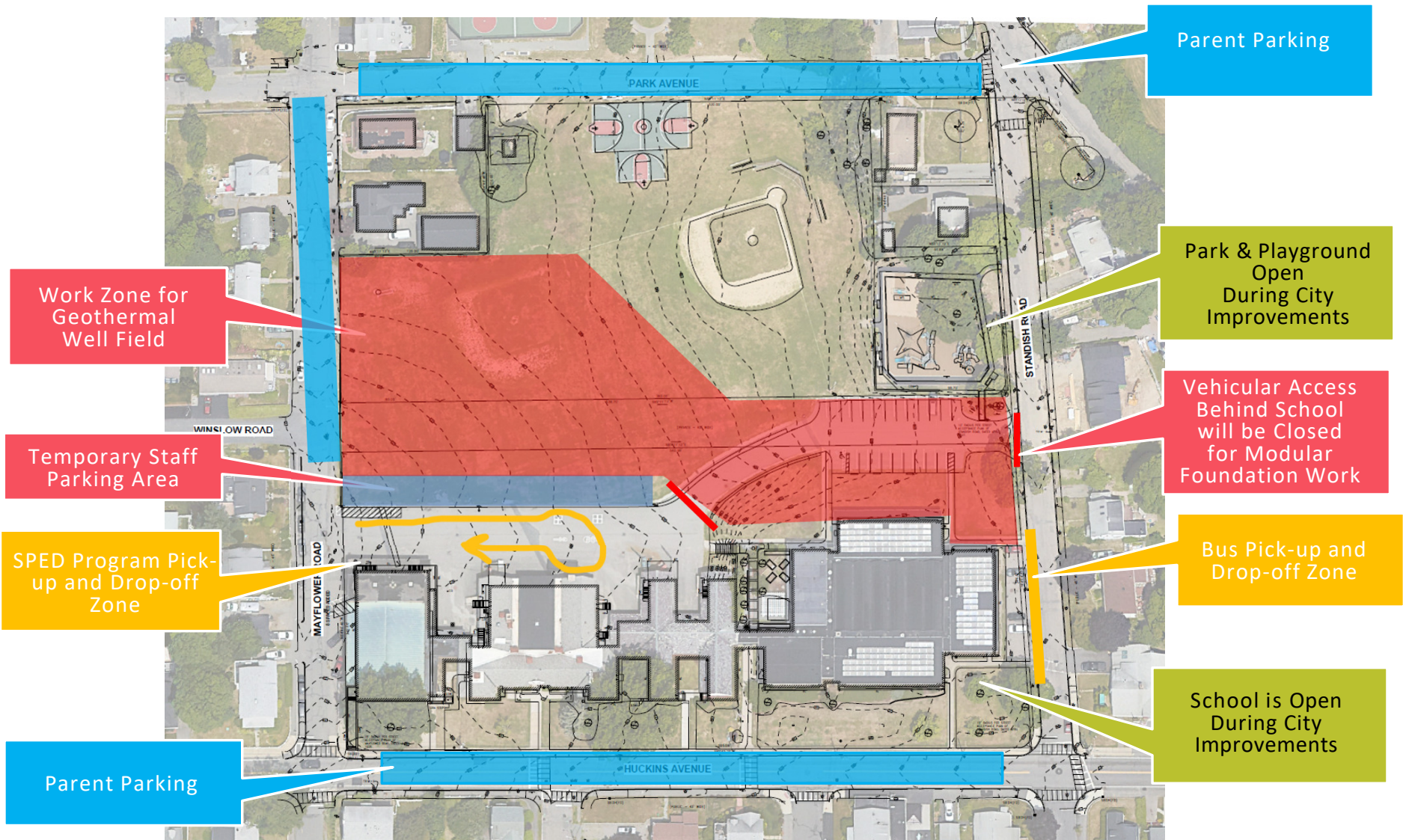
Parent Parking

Park & Playground Open During City Improvements

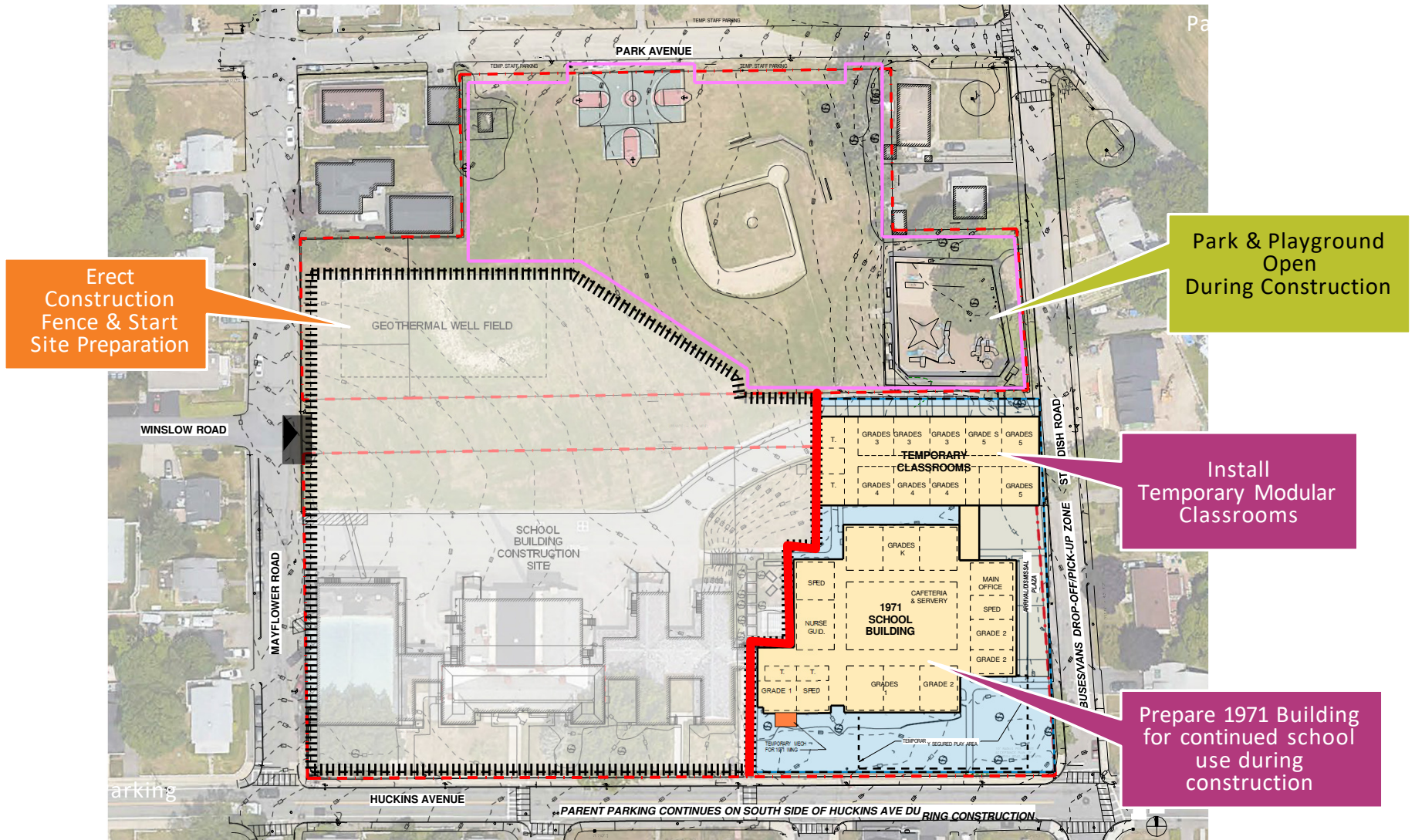
Vehicular Access Behind School will be open for access to Standish (no parking)

School is Open During City Improvements

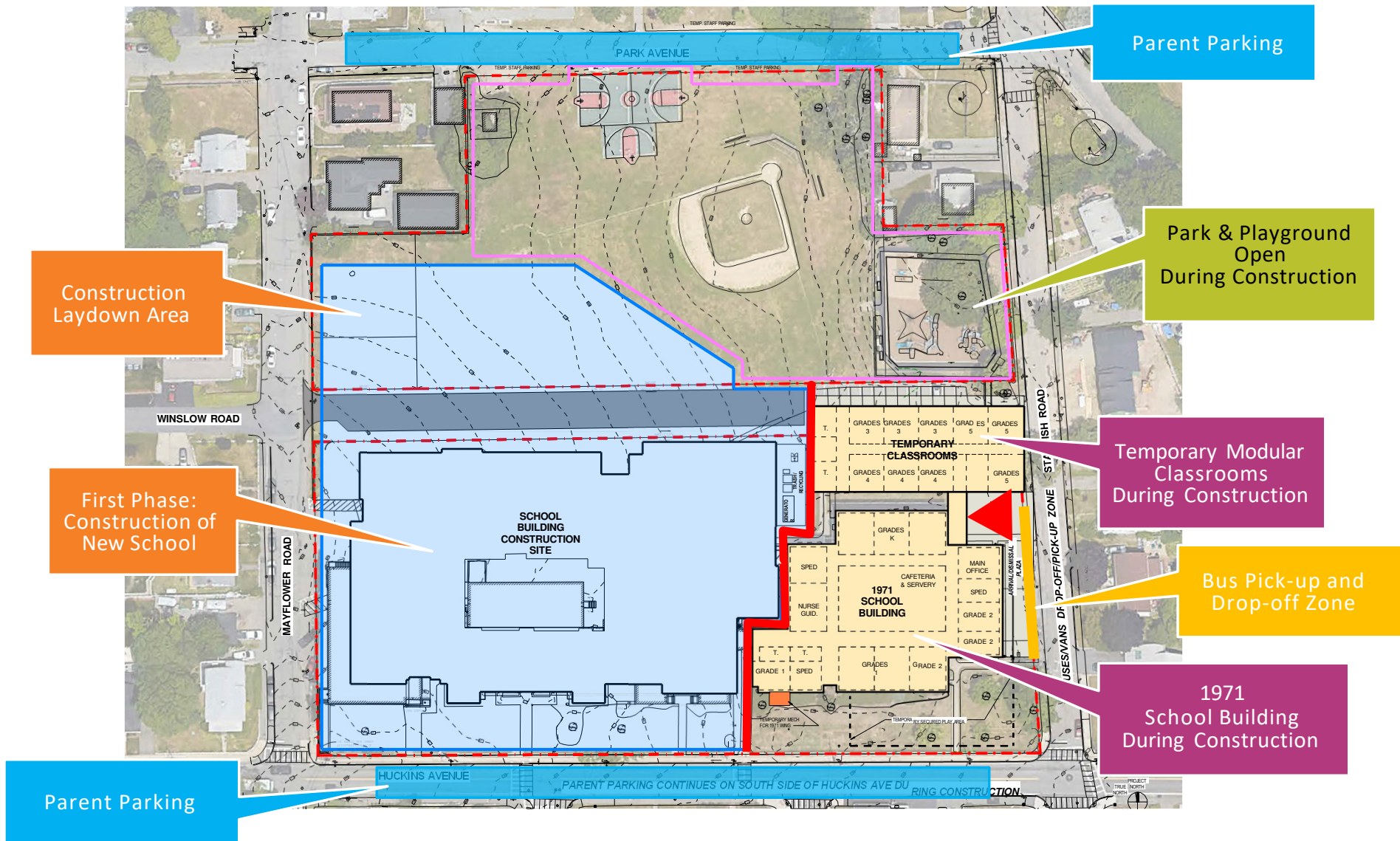
SCHOOL ENABLEMENT WORK – PHASE 5 (May / June)



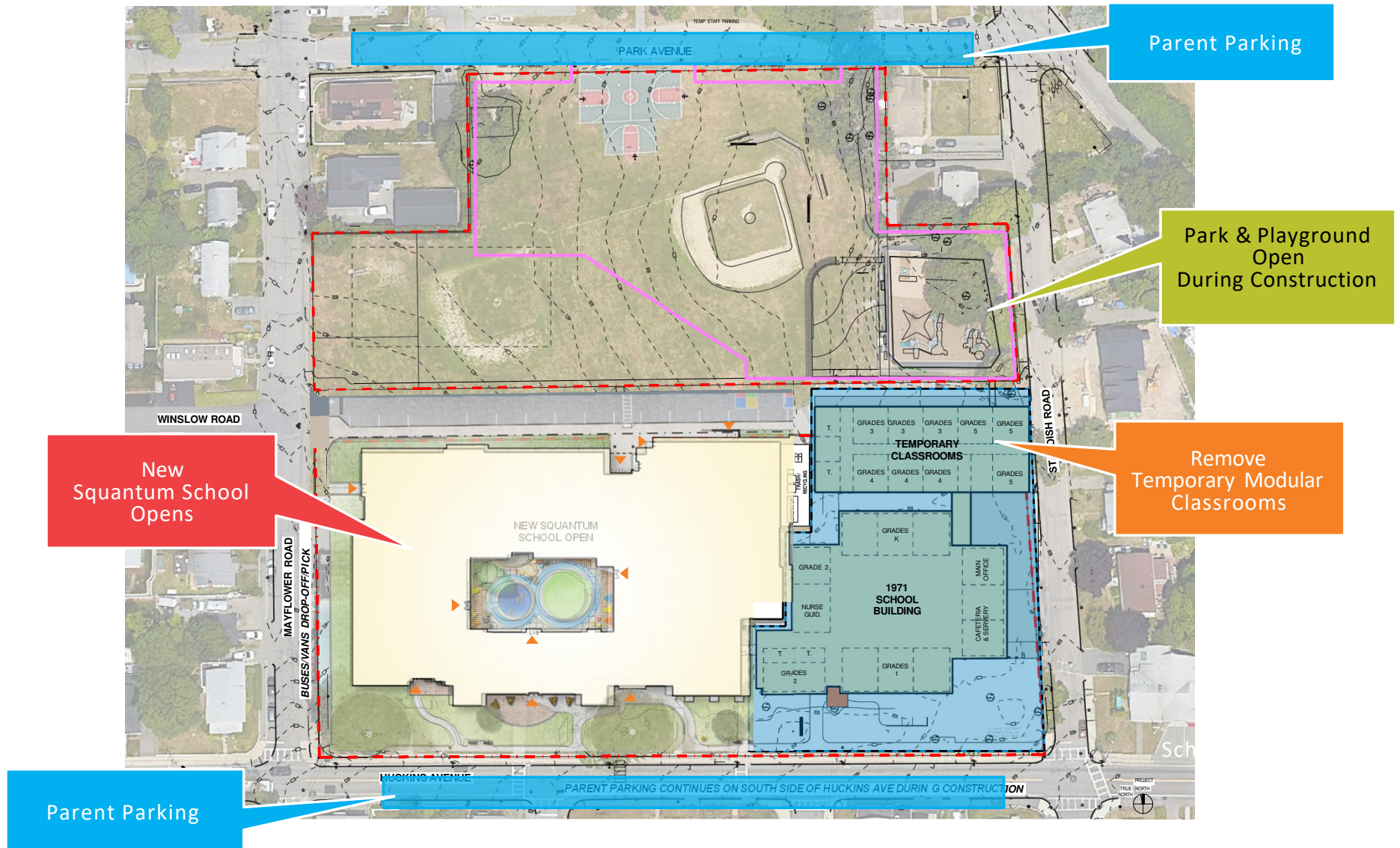
PHASED CONSTRUCTION: SUMMER 2025



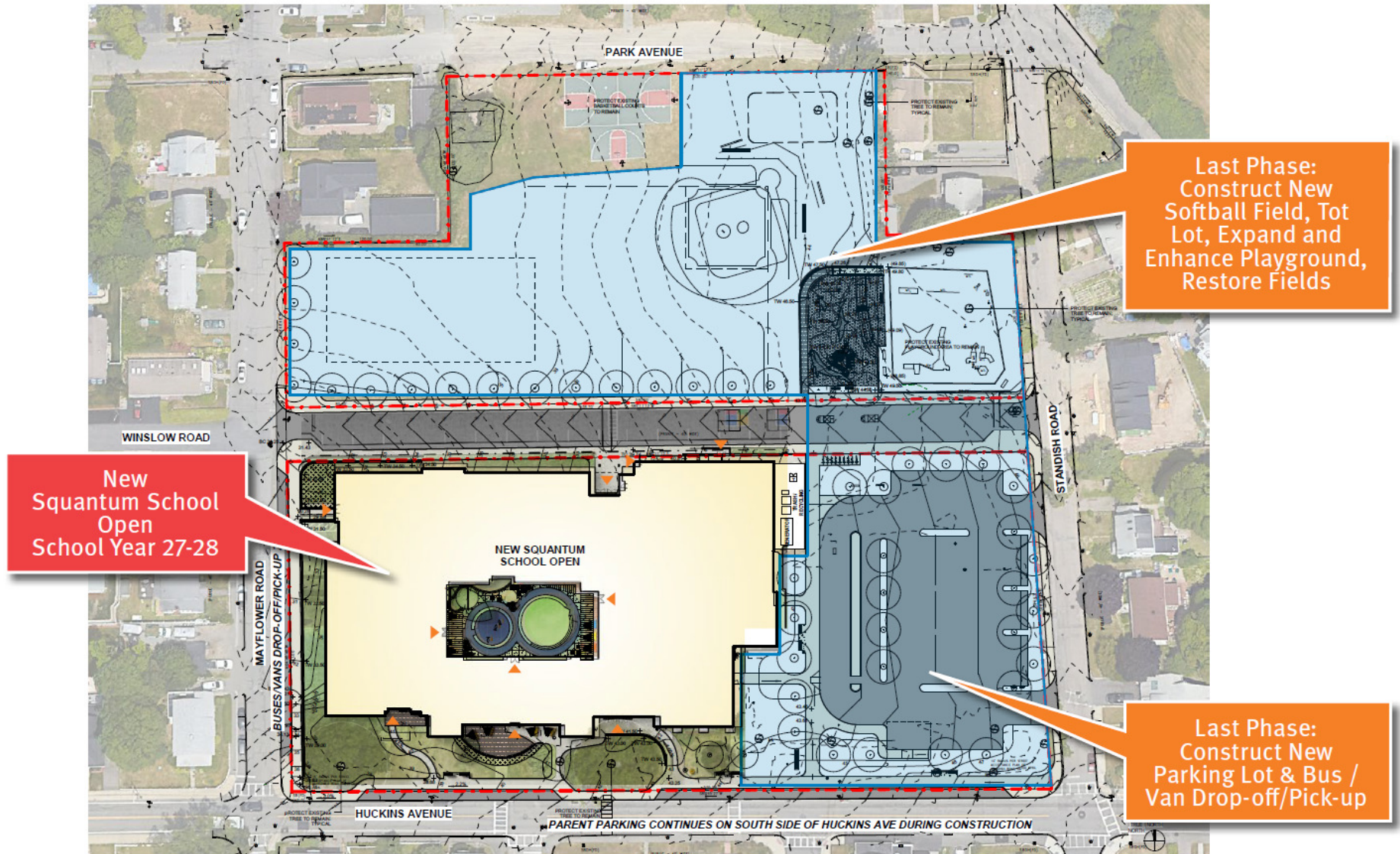
PHASED CONSTRUCTION: SUMMER 2025 TO SUMMER 2027



PHASED CONSTRUCTION: FALL 2027



PHASED CONSTRUCTION: FALL 2027 TO SPRING 2028





THANK YOU!

Quantum School
Project Website:
QR Code



<https://quantumschool.com>