

## Cup of Whiskey

**Author:** Beth Twist  
**Company:** Heartstring Samplery  
**Copyright:** 2018... All Rights Reserved  
**Website:** [www.thetwistfamily.blogspot.com](http://www.thetwistfamily.blogspot.com)  
**Grid Size:** 88W x 110H  
**Design Area:** 6.14" x 7.71" (86 x 108 stitches)

### Legend:

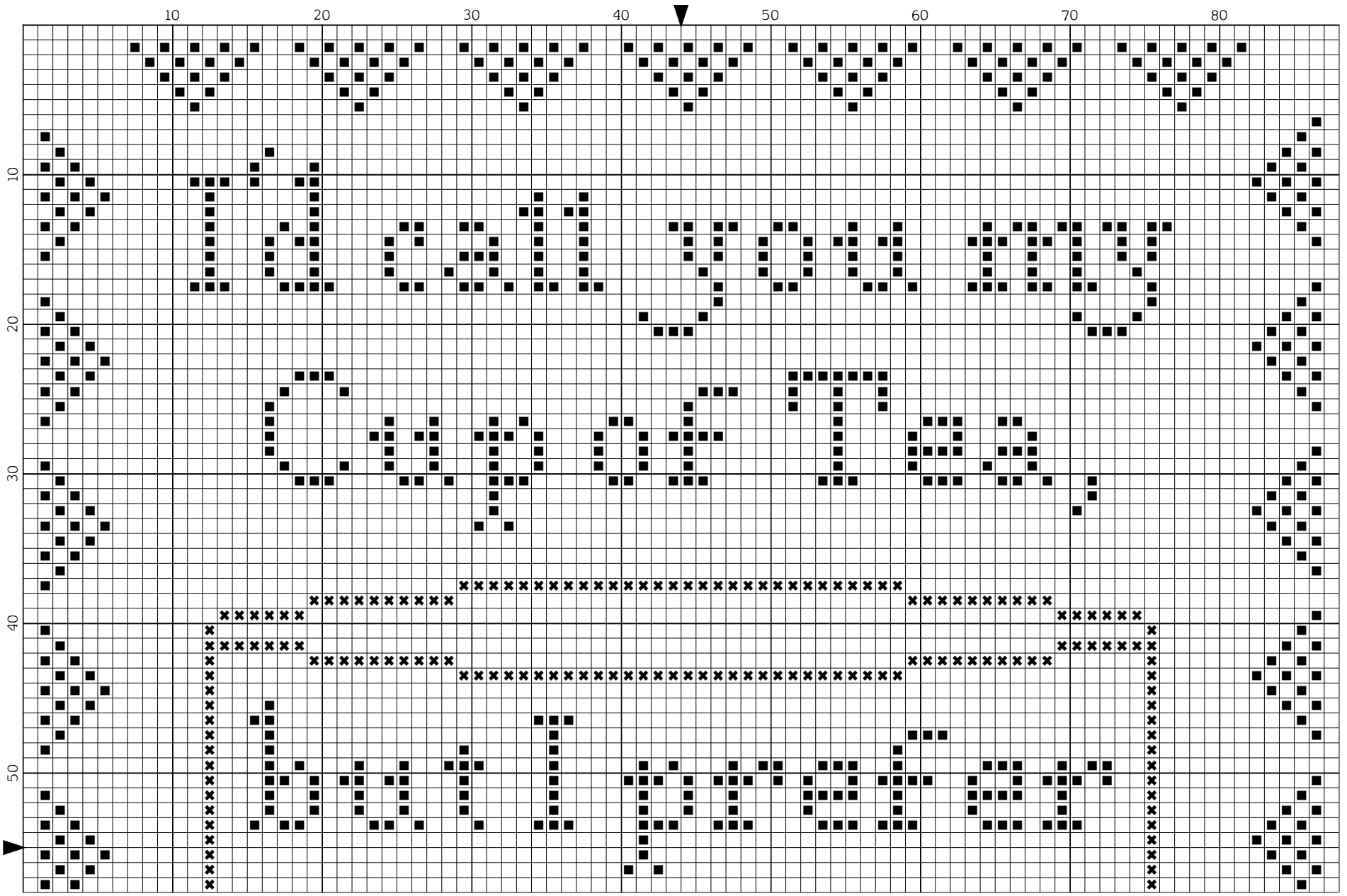
■	DMC	310	black
◐	DMC	433	brown - md
✕	DMC	642	beige gray - dk
@	DMC	644	beige gray - md
◓	DMC	3782	mocha brown - lt
●	DMC	3829	old gold - vy dk
	DMC	Ecru	ecru



*This fun little chart was created in honor of my Farmboy's birthday; it suits us exactly. Perhaps it also represents you and a dear one in your own life.*

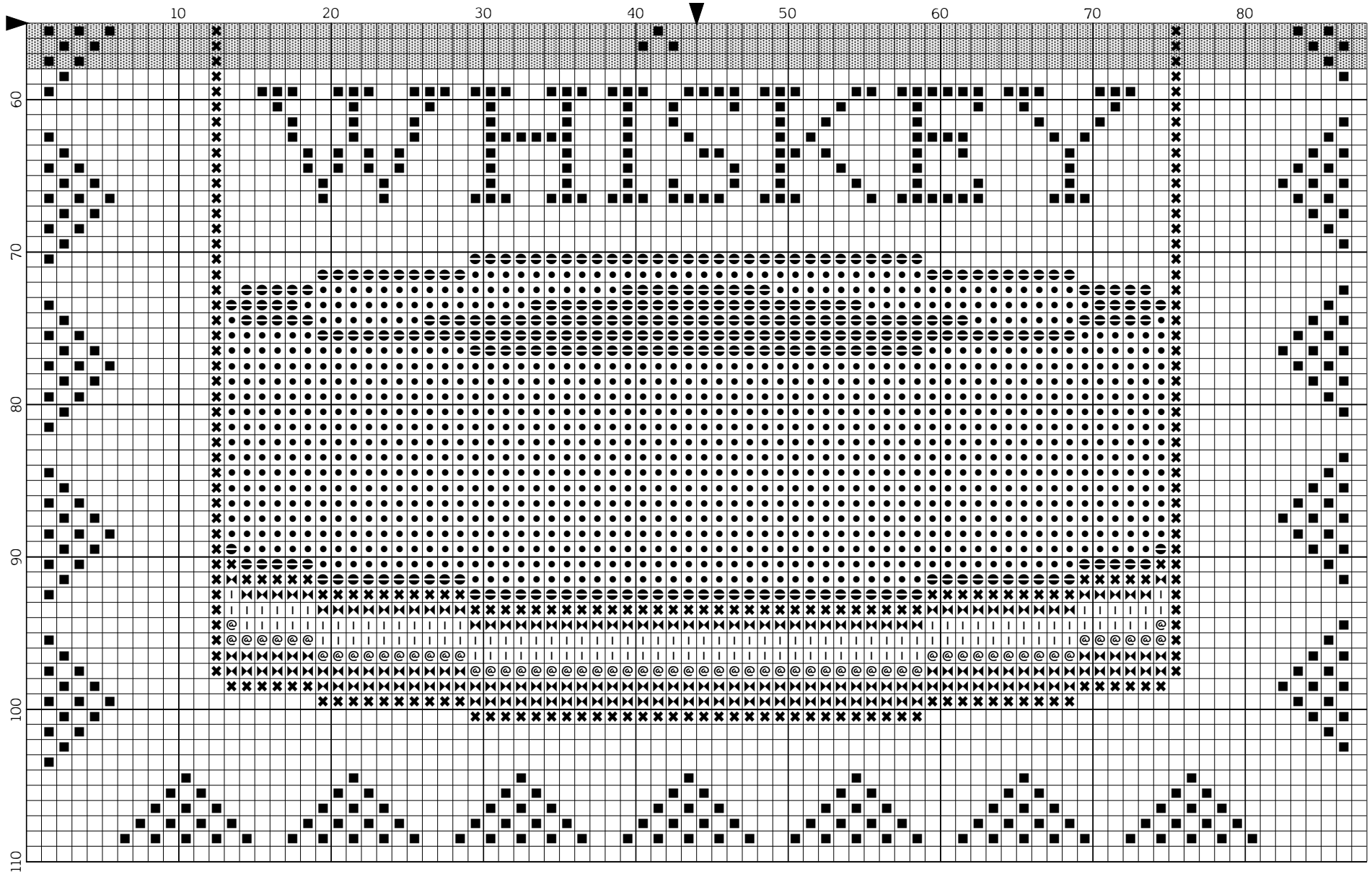
*The recommended thread colors work well together, but by all means, if you're a fan of silk or fancy floss, feel free to create a conversion that makes you happy.*

*Cup of Whiskey... a Heartstring Samplery design by Beth Twist*



For new designs & info, go to [www.thetwistfamily.blogspot.com](http://www.thetwistfamily.blogspot.com)

Cup of Whiskey... a Heartstring Samplery design by Beth Twist



For new designs & info, go to [www.thetwistfamily.blogspot.com](http://www.thetwistfamily.blogspot.com)