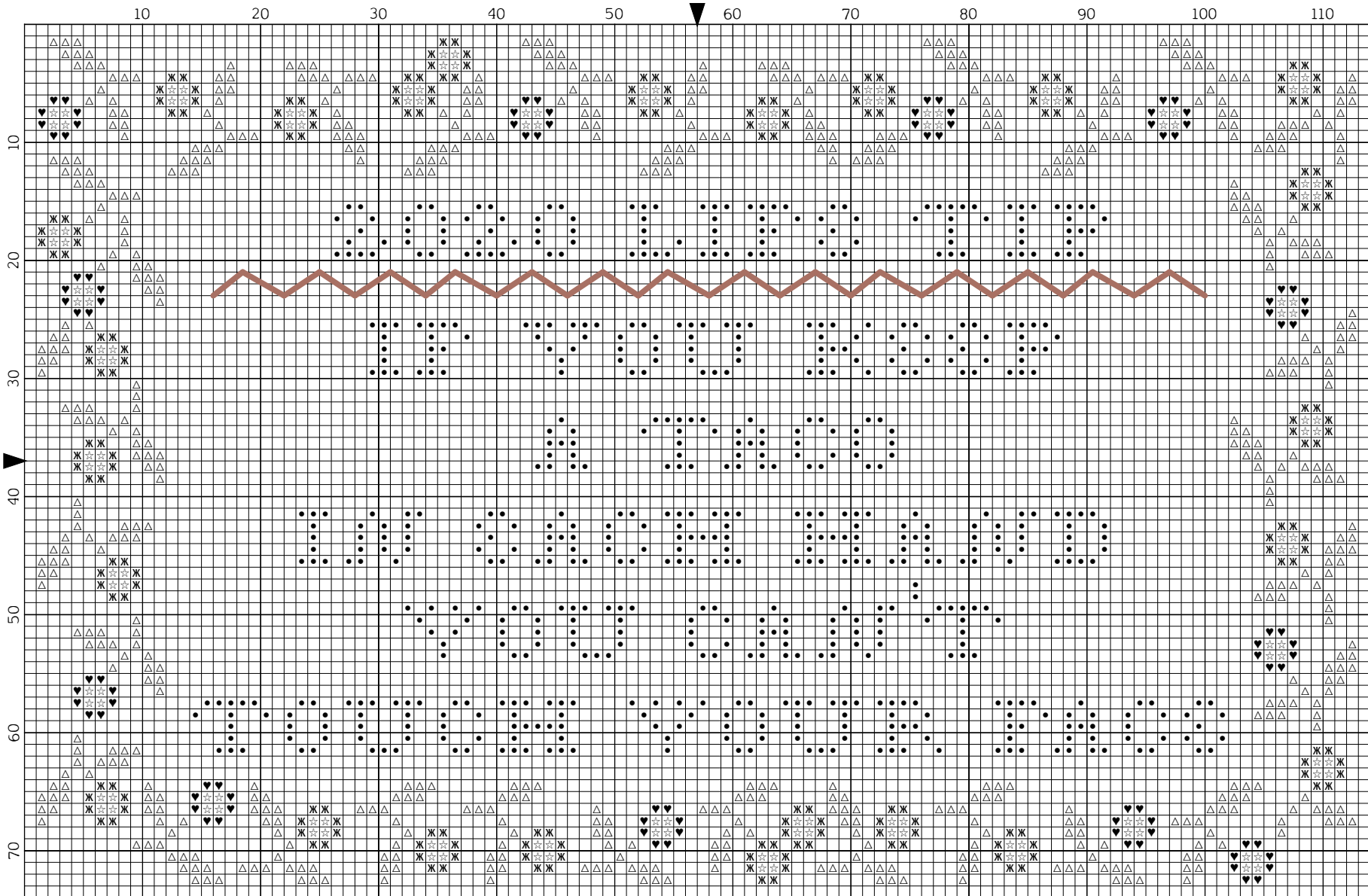




2020 LIFE TIP

a *Heartstring Samplers* design by Beth Twist

2020 Life Tip... a Heartstring Samplery design by Beth Twist



2020... All Rights Reserved... , Licensed to:

2020... All Rights Reserved... For new designs & info: www.heartstringsamplery.com

2020 Life Tip... a Heartstring Samplery design by Beth Twist



2020... All Rights Reserved... , Licensed to:

2020... All Rights Reserved... For new designs & info: www.heartstringsamplery.com

2020 Life Tip

Author: Beth Twist
Company: Heartstring Samplery
Copyright: 2020... All Rights Reserved...
Website: www.heartstringsamplery.com
Grid Size: 114W x 74H
Design Area: 7.00" x 4.50" (112 x 72 stitches)



Legend:

◼ ● WDW 1230 Havana

◼ ♥ WDW 1333 Lancaster Red

◼ △ WDW 2197 Oscar

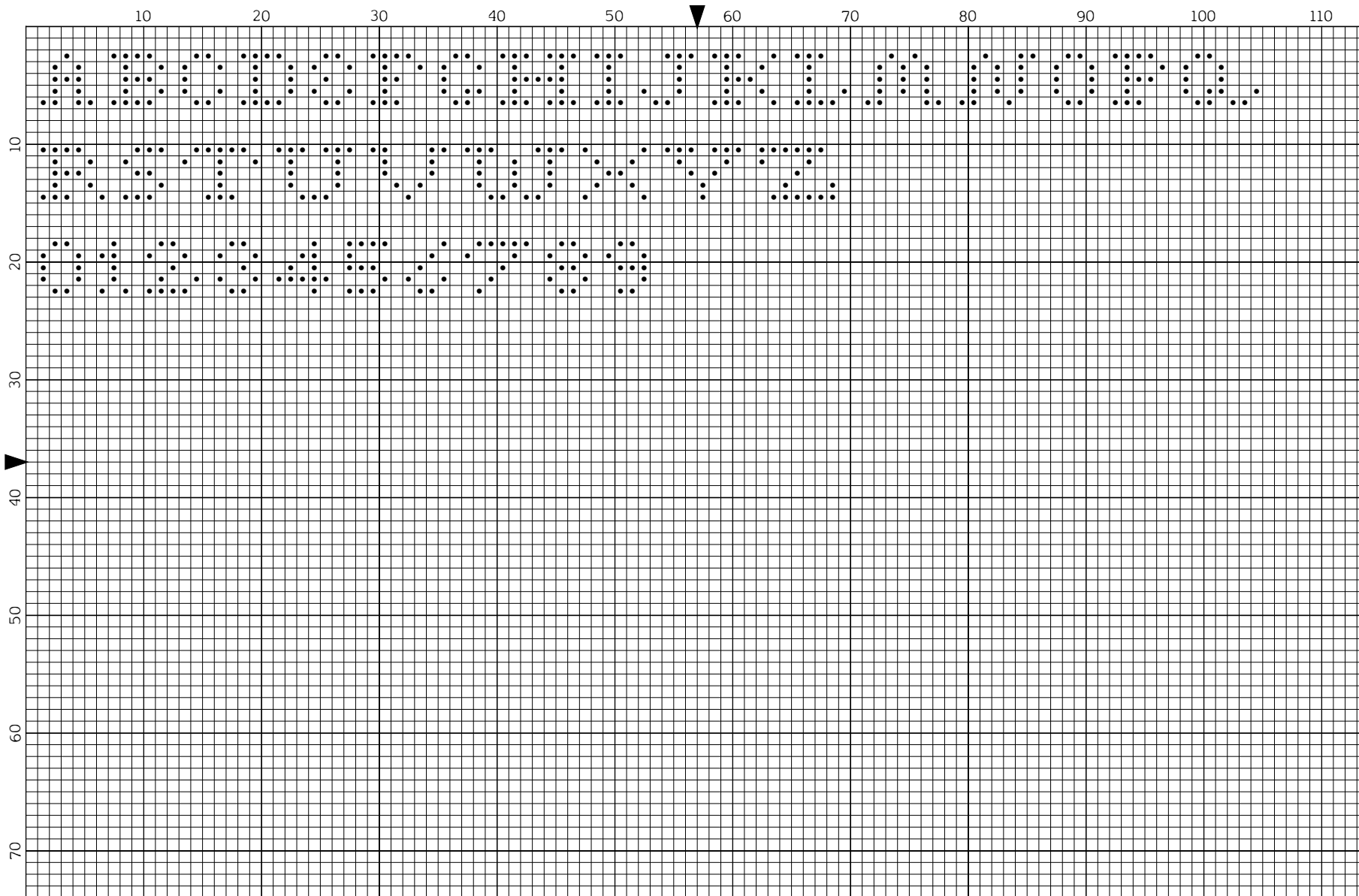
◼ Ж WDW 1332 Red Pear

◼ ☆ WDW 2219 Whiskey

Backstitch Lines:

— WDW-1332 Red Pear

2020 Life Tip Alphabet... a Heartstring Samplery design by Beth Twist



2020... All Rights Reserved... , Licensed to:

2020... All Rights Reserved... For new designs & info: www.heartstringsamplery.com



2020 Life Tip

Stitch Count: 114 x 74

Model stitched on
Graham Cracker Fabrics 36 count Pie Crust

Flosses used:

Weeks Dye Works
Havana, Lancaster Red, Oscar,
Red Pear, Whiskey

Chart includes full alphabet
for customization.

This pattern is an original design
by Beth Twist
of *Heartstring Samplery*

Original release date: July 2020

All rights reserved.
Please respect the work that went into its
creation and do not reproduce.

beth@heartstringsamplery.com
thetwistfamily.blogspot.com