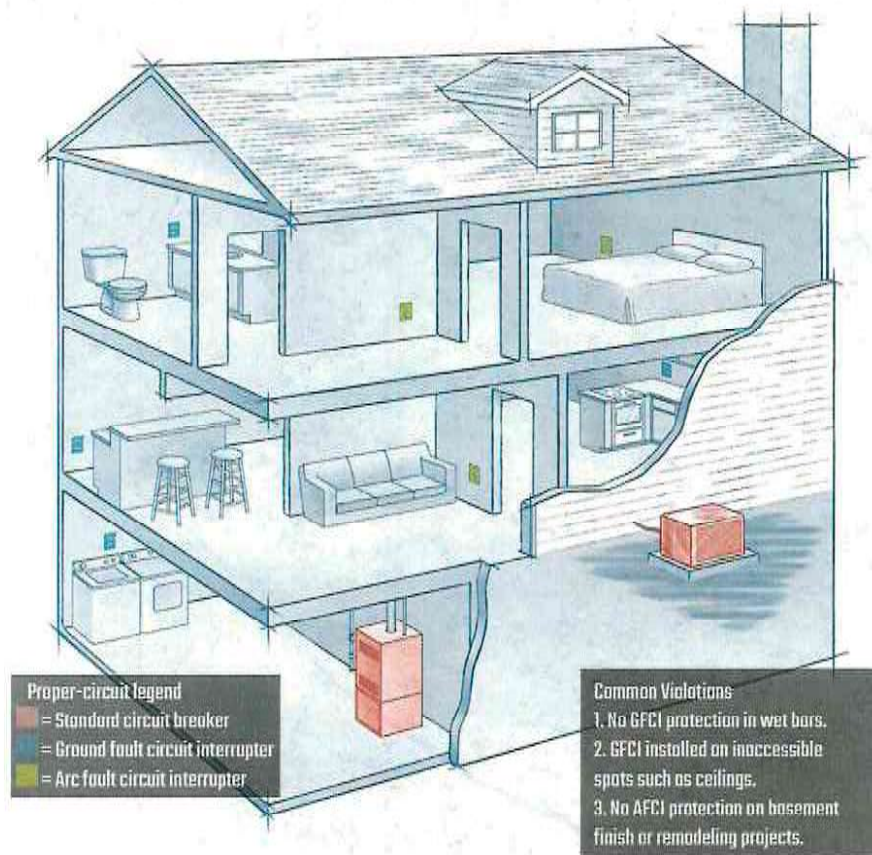




776 Jernee Mill Road Suite 128, Sayreville, NJ 08872
1-888-308-3879



Choosing the wrong circuit breakers

To help you understand which protection goes where, consider what each type of breaker was designed to do.

Circuit breakers protect wiring and equipment like furnaces, air conditioners, dryers and stoves.

GFCIs protect people in areas where they are likely to be using small appliances and where water is present.

AFCIs prevent fires in all living areas where appliance cords are prone to be pinched or crimped, or chewed by pets.