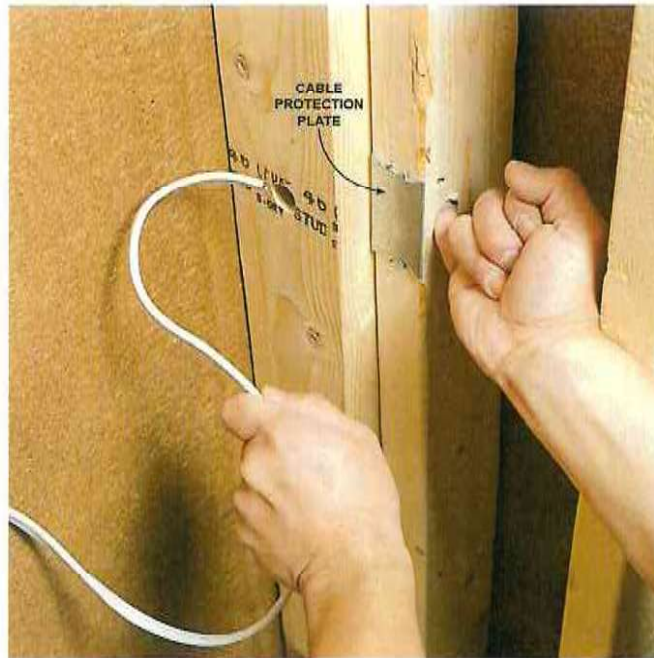




776 Jernee Mill Road Suite 128, Sayreville, NJ 08872  
1-888-308-3879



### **Install plates before pulling wire**

Electrical cables need to be set back 1-1/4 in. or more from the edge of a stud or wood-framing member to protect cables from wayward nails and screws. Install steel cable-protection plates over holes drilled closer to the edge. Keep several plates in your pouch while you're drilling and install them right away so you don't forget.