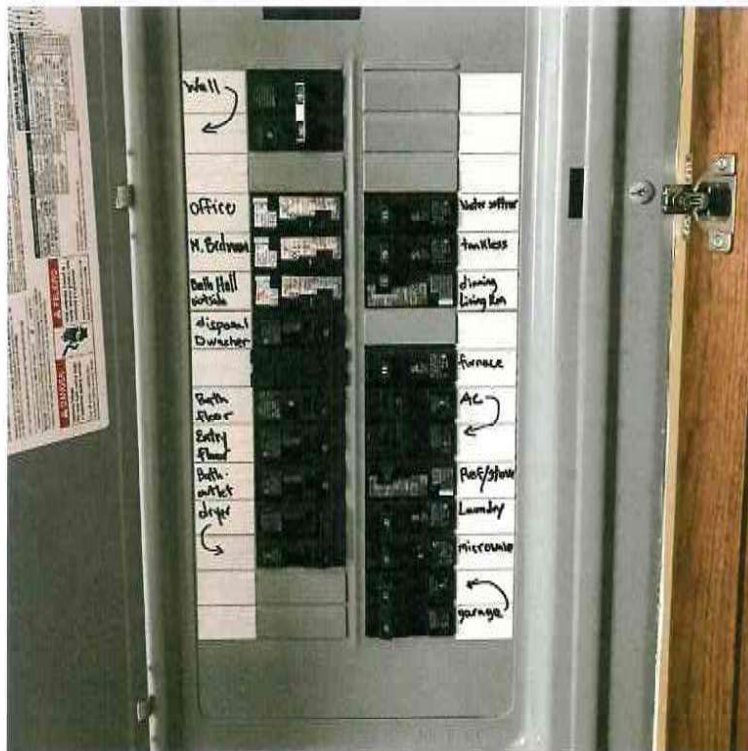




776 Jernee Mill Road Suite 128, Sayreville, NJ 08872
1-888-308-3879



Labeling a new electrical panel only takes a few minutes. Tracing circuits and labeling an existing panel is a task that is best done with two people. A complete directory helps to ensure the safe operation of the electrical system, especially in an emergency. The code requires that every circuit and circuit modification be legibly identified as to its clear, evident and specific purpose or use. The identification must be included in a circuit directory that is located on the face or inside of the panel door. The circuit directory must be durable enough to withstand the environment in which it is located.

Each label identification must contain a degree of detail that distinguishes it from all other circuits. Even spare, unused circuit breakers must be identified. And don't create personal labels such as "Mary's Bedroom" that will have no meaning to the next family that owns the home.