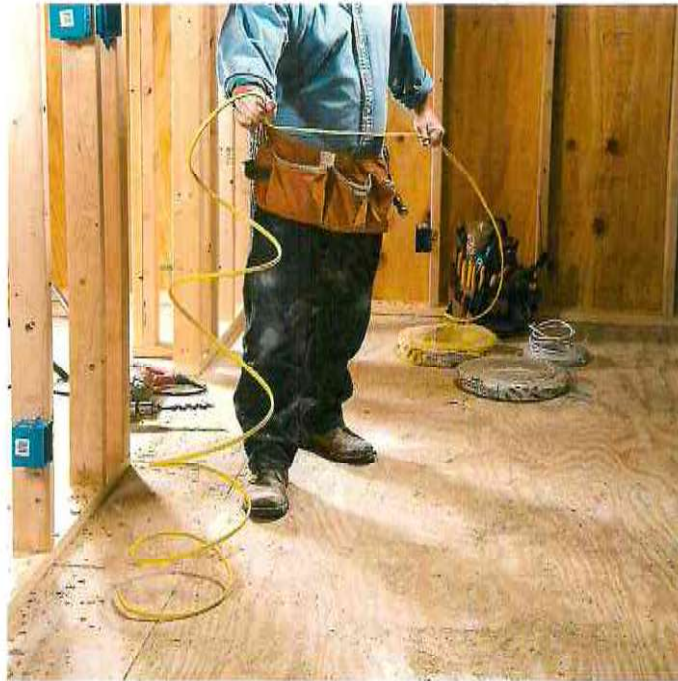




776 Jernee Mill Road Suite 128, Sayreville, NJ 08872
1-888-308-3879



Straighten wires before pulling

Pulling cable through holes in framing is a lot easier if you straighten out the cable first. Walk along the length of the cable, straightening it between your thumb and forefinger as you go.

Once you've pulled the cable through the holes, push it back a bit to leave a small amount of slack. This is handy insurance in case you cut the cable a little short and need extra length, and it also allows other tradespeople a little slack to push your cable out of the way of plumbing pipes or ductwork.