

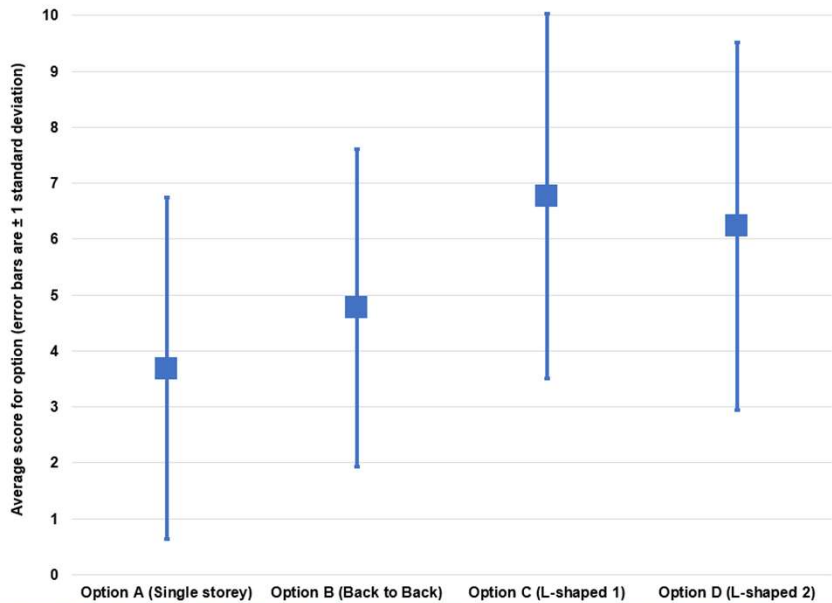
# Melvich Community SCIO

Update for Melvich Community Council:  
15<sup>th</sup> November 2022

**OSCR**  
Scottish Charity Regulator  
[www.oscr.org.uk](http://www.oscr.org.uk)

**Registered  
SCIO  
SC050942**





## Melvich Community Hub project

- Continued liaising with solicitors to try to get land purchase completed asap. Land purchase is now on critical path.
- Hub design options consultation output report drafted and with trustees for review/approval.
- Comments on options C and D to be reviewed in detail with principal architect at planned meeting on 2/12/2022 to finalise high level option put in for pre-planning advice (to be submitted after land purchase completed) and finalising the detailed design specification for next RIBA stages to use.



# Community Growing Project

---

- Site has been weeded and tidied up before winter
- Additional gravel was put in place to improve ground surface in advance of any winter events that we hold at the former village hall site.
- Big thanks to all of the volunteers who helped with this task.





# Play parks

- Start up meeting happened 26/10/2022.
- Sub-committee of Melvich Community SCIO established to progress the play parks formed.
- Chair: Natalie Bird; Secretary: Sarah Kerr
- Email: [playpark@melvichcommunityscio.org](mailto:playpark@melvichcommunityscio.org)
- Initial focus on Portskerra Play Park only
- Letters of support received from Councillor Marianne Hutchison and Melvich Community Council – Thank you for these.
- Grant funding application submitted to SSE Strathy North for legal fees associated with CAT for ownership and interim lease.
- Community Asset Transfer (CAT) application now submitted for Portskerra Play Park.
- Starting to engage with play park equipment providers – site visits being requested.



# Kid's Christmas Challenge for Portskerra Play Park

Saturday 3rd December 2022, 2-3pm  
Melvich Football Club pitch, Portskerra

## Sponsored Run

Collect sponsorship to run 2, 3 or 4 laps of the pitch

Mini run for smaller children

Wear a Christmas jumper, hat or costume (*optional*)

For a sponsor form email [playpark@melvichcommunityscio.org](mailto:playpark@melvichcommunityscio.org)

## Beat the Christmas Goalie

Have a go at scoring against our festive goalie!

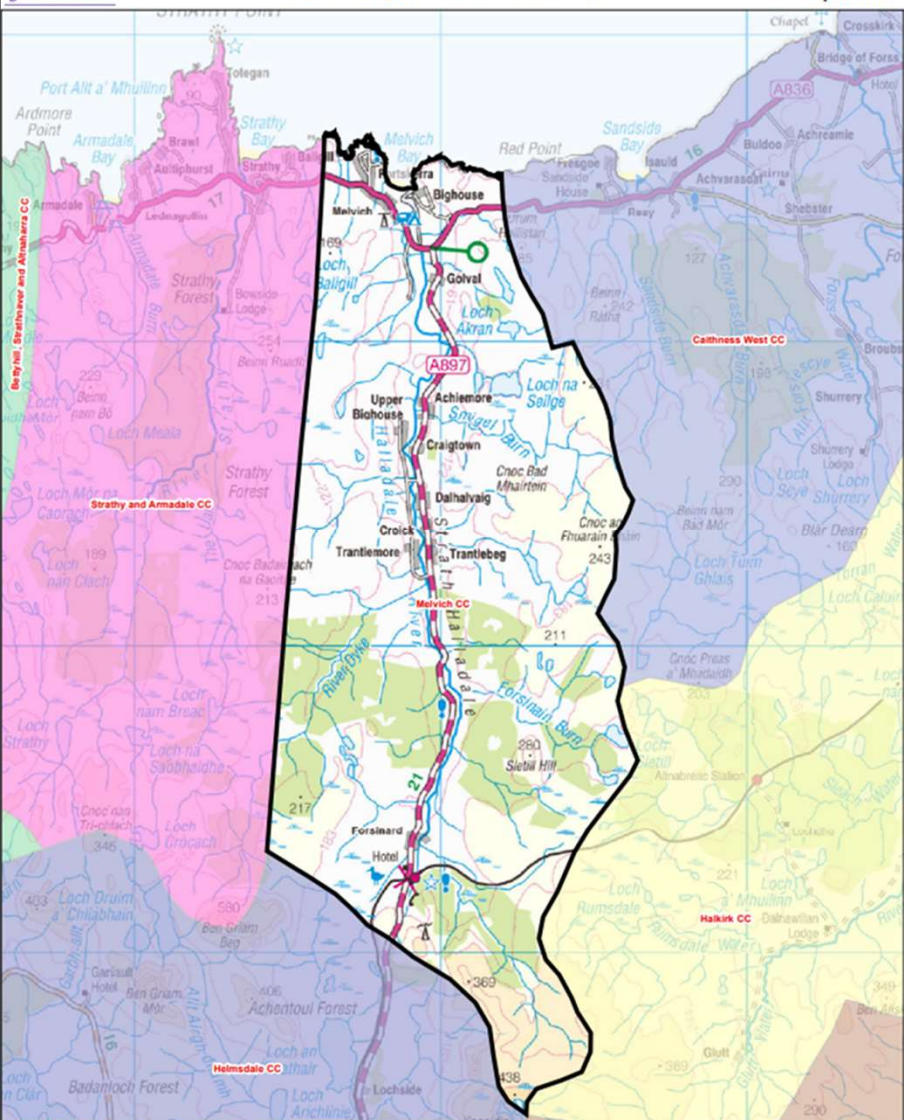
50p a go

Hot drinks and cakes available! (optional donation)



- Kids Christmas Challenge to raise funds for Portskerra Play Park being held on 3<sup>rd</sup> December 2022.
- Please come along, sponsor a child(ren), and try to beat the Christmas Goalie !





# Community Action Plan

- Invitation To Tender for independent consultant to perform CAP consultation with Local Energy Scotland (LES) for review. They are aware of our timelines.
- Next CAP Steering Group meeting 28<sup>th</sup> November 2022 at Halladale Hall – this will be attended by Local Energy Scotland.
- Update on Ackron wind farm will also be given to the steering group from the developer at this meeting.
- Intent is for CAP ITT to be signed off and issued at the end of this month following LES input.
- Intent is to have a CAP in place by ~ Summer 2023 for MCC area.



## Community events and fundraising:

- Schedule of regular community events established.
- Coffee morning held 7/11/2022 was very well attended. Next planned coffee morning: 05/12/2022.
- Quiz Nights at Halladale Inn. Next quiz nights are tonight and 6/12/2022.
- Supported the Great North Coast Scarecrow Trail 2022 and provided prizes for winners.
- Provided refreshments and snack after Remembrance Day Service on 13/11/2021 for those who attended.
- Community Christmas meal planned for 12/12/2022 at Halladale Inn.
- Christmas tree going up in December and Christmas party at Community Garden on 22/12/2022.





## Work planned in coming months:

- Complete legal process to purchase land adjacent to the former village hall (now critical path activity).
- Progress community asset transfer of public toilets.
- Continue delivering RIBA stage 1 (Preparation and briefing) for Melvich Community Hub. Note: Funding applications for next RIBA stages and submission of pre-planning advice application on hold until land purchase complete.
- Work with MCC and other stakeholders to deliver a Community Action Plan.
- Progress Portskerra Play Park including CAT application. Get quotes for Play Park equipment and installation / maintenance.
- Run regular local fund raising initiatives and community events.
- Launch photography competition for 2024 calendar !





Any comments / questions ?



For more information, please visit [www.melvichcommunityscio.org](http://www.melvichcommunityscio.org)  
or email us at [secretary@melvichcommunityscio.org](mailto:secretary@melvichcommunityscio.org)