

Melvich Community SCIO

OSCR
Scottish Charity Regulator
www.oscr.org.uk

**Registered
SCIO
SC050942**



Charitable object

"To provide, or assist in the provision of, facilities for the recreation or other leisure-time occupation, in the interest of social welfare in an effort to improve the conditions of life of the inhabitants of the district of Bighouse, Melvich, Portskerra, Golval and Kirkton, all in the Parish of Farr."

(Note: will be amending charitable area to align with Melvich Community Council's boundaries)



Melvich Community SCIO

Melvich Community Hub Project

OSCR
Scottish Charity Regulator
www.oscr.org.uk

**Registered
SCIO
SC050942**



Melvich Community Hub project (1)

Strategic plan:



Demolition stage completed
(10/2021)



Melvich Community Hub project (2)

Acquire adjacent land:



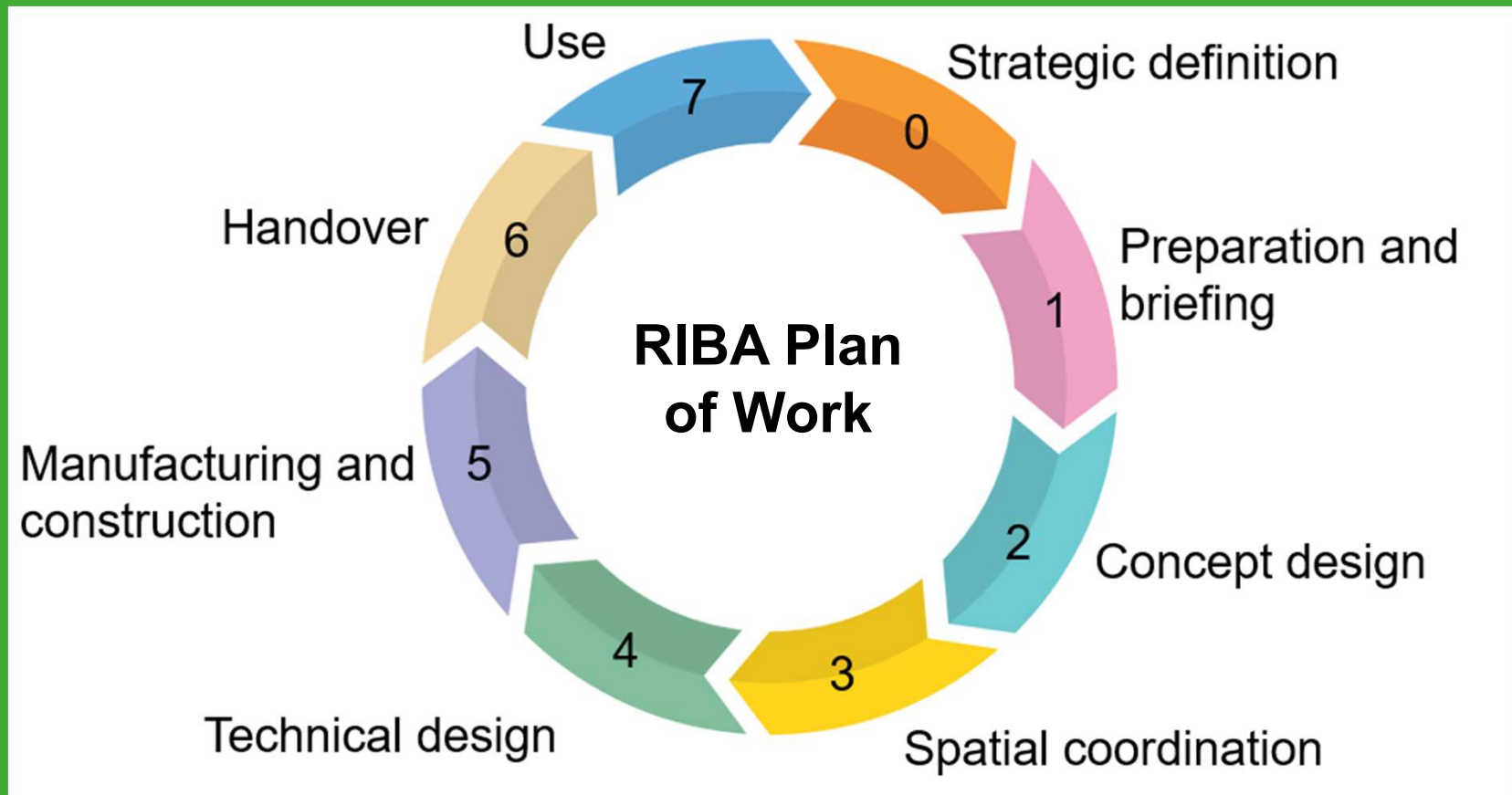
- Adjacent land purchase completed 24/11/2022.
- Community Asset Transfer application for public toilets submitted May 2022 following consultation exercise. Application still going through due process.

Melvich Community Hub project (3)

Approximate extent of land
now owned by Melvich
Community SCIO



Melvich Community Hub project (4) Design/build stage



Melvich Community Hub project (5) Design/build stage



Main hall with stage	Green room / changing room	Large meeting room (~20 people capacity)	Small meeting room (~10 people capacity)	Ticket office / admin office / shop	Soft play / young kids room	Art / craft room
Gaming room	Kitchen	Lounge / socialising area	Hot desk for public IT access	Multi-faith room	Cloakroom	Bar
Toilets/showers (public use plus for hub users)	Storage room(s) / areas	Medical room (suitable for healthcare needs)	Office(s) for business rental / use	Multi-functional room (music / Lego / clubs)	Plant room (electrics, boilers, etc)	Utility room

Vehicle parking area	Covered bike stand	Electric vehicle charging points	Noticeboard	Pedestrian / traffic separation
Smoking shelter	Garden area with seating	Outdoor play area	Water for camper vans	Bins and recycling containers
Dog tie up area	Fire assembly point	Outside washing machines & tumble dryers	Chemical waste disposal facility	Community hub building

Due to space constraints at planned site these will need to be considered as part of future development for the Melvich community:

- Multi-use Games Area (MUGA)
- Helipad

Outputs of specification workshop and other inputs from community (e.g. school children's wishes) combined to give initial design brief. Consulted community on this output.

Melvich Community Hub project (6) Design/build stage

Melvich Community SCIO secured funding to cover the delivery of the anticipated costs of RIBA Stage 1 works.

We are thankful to SSE's Sustainable Development Fund, Highland Council's ward discretionary fund, SSE's Strathy North Windfarm community fund and the North Highland Initiative's Infrastructure Support Programme for the grant funding for this stage.

Highland Council appointed as architect for the Melvich Community Hub project.



Melvich Community Hub project (7) Design/build stage

Held hybrid meeting for Melvich Community SCIO members to share DRAFT Outline Design Brief and seek initial feedback for discussion with architects.

Responses collated electronically. Initial round of comments considered.



Melvich Community Hub project (8)

Design/build stage

Various investigations performed on the land to inform the RIBA stage 1 works (e.g. topographical survey, percolation tests, etc).

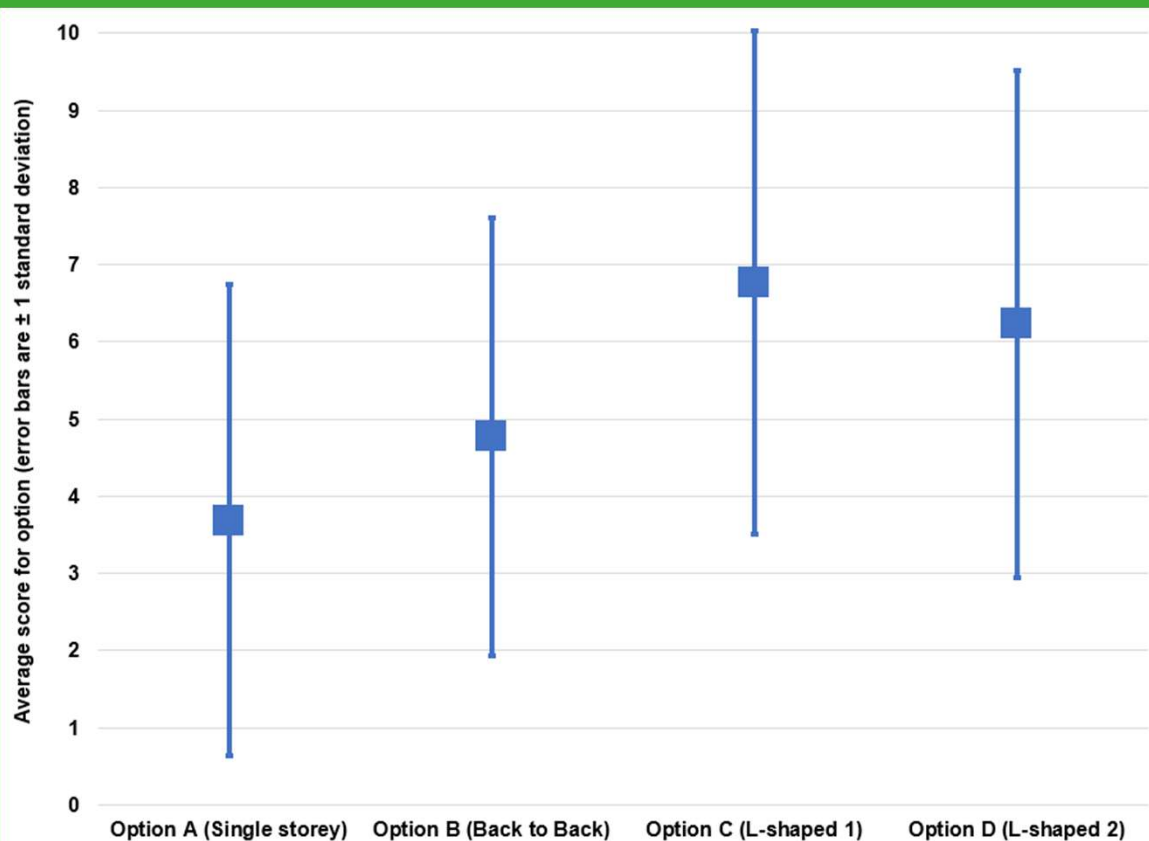
Four design options for building shape proposed by architect.

Community consulted on building shape design options and comments captured.

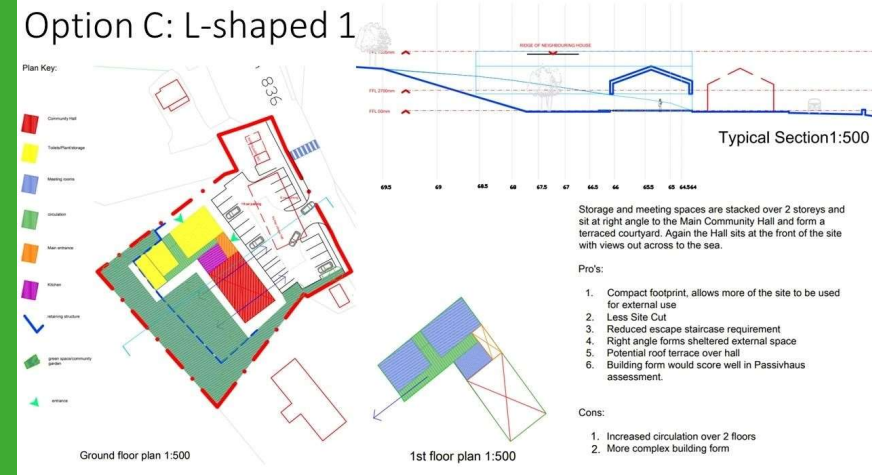


Melvich Community Hub project (9)

Design/build stage



Option C is the preferred building shape based on community feedback. Report on comments received produced.



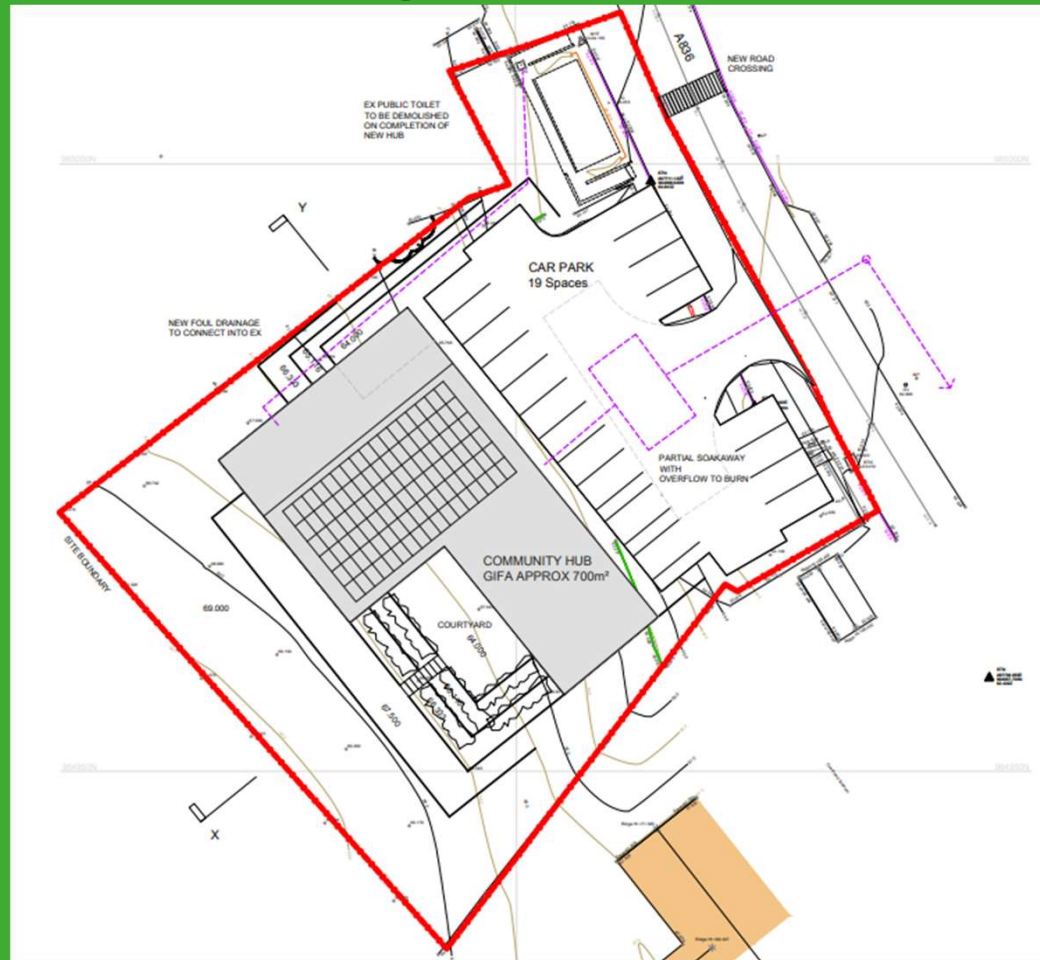
Melvich Community Hub project (10) Design/build stage

Community feedback on 4 options reviewed with architect team on 2/12/2022.

Pre-planning application submitted to Highland Council on 22/12/2022 based on option C (with tweaks based on feedback).

This will help answer our questions on amount of car parking provision required and whether we have a feasible proposal to take forward. This will de-risk the project significantly.

Currently investigating roof construction materials to achieve 100+ year design life in our coastal environment with minimal maintenance requirements.



Melvich Community Hub project (11)

Design/build stage

Next steps:

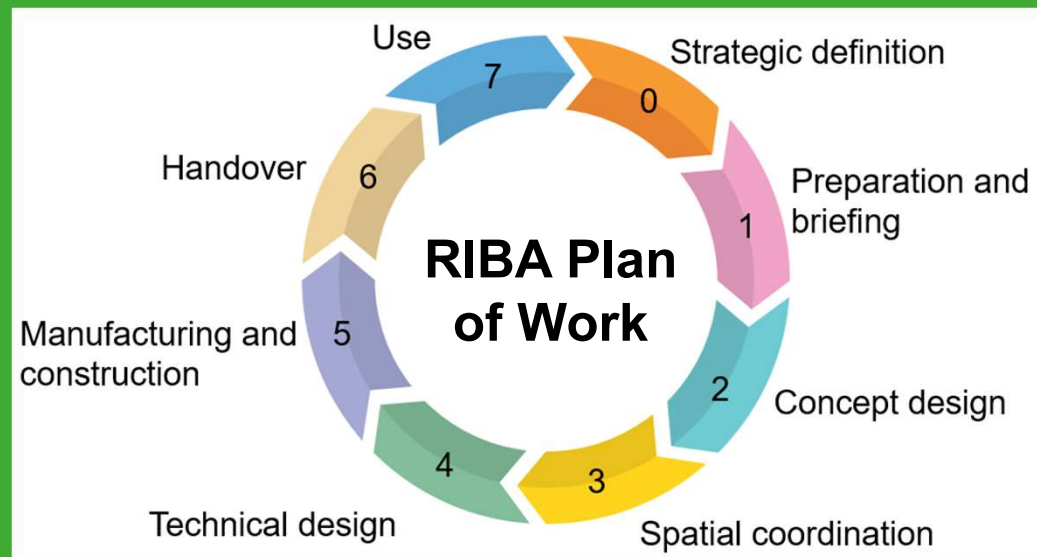
Complete delivery of RIBA Stage 1 based on pre-planning advice feedback. This stage should be complete Spring 2023.

Apply for grant funding for RIBA Stages 2 to 4. Anticipated RIBA Stage 4 complete around March 2024.

Invitation to tender (ITT) for manufacture and construction of community hub anticipated to be issued Spring 2024.

Preferred contractor could be selected Summer 2024 and costs will then be known.

Major grant funding required from various sources. Commencement of construction is subject to successfully getting funding. **Potential that construction could start late 2024 or in 2025.**



Melvich Community Hub project (12) Design/build stage

**Do you want to
get involved to
help us deliver the
new community
hub for our
community?**

(e.g. help with fundraising
events, help with grant
funding applications, help
with technical inputs, etc)

Remember: many hands
make light work.



Melvich Community SCIO

Community Action Plan

OSCR
Scottish Charity Regulator
www.oscr.org.uk

**Registered
SCIO
SC050942**



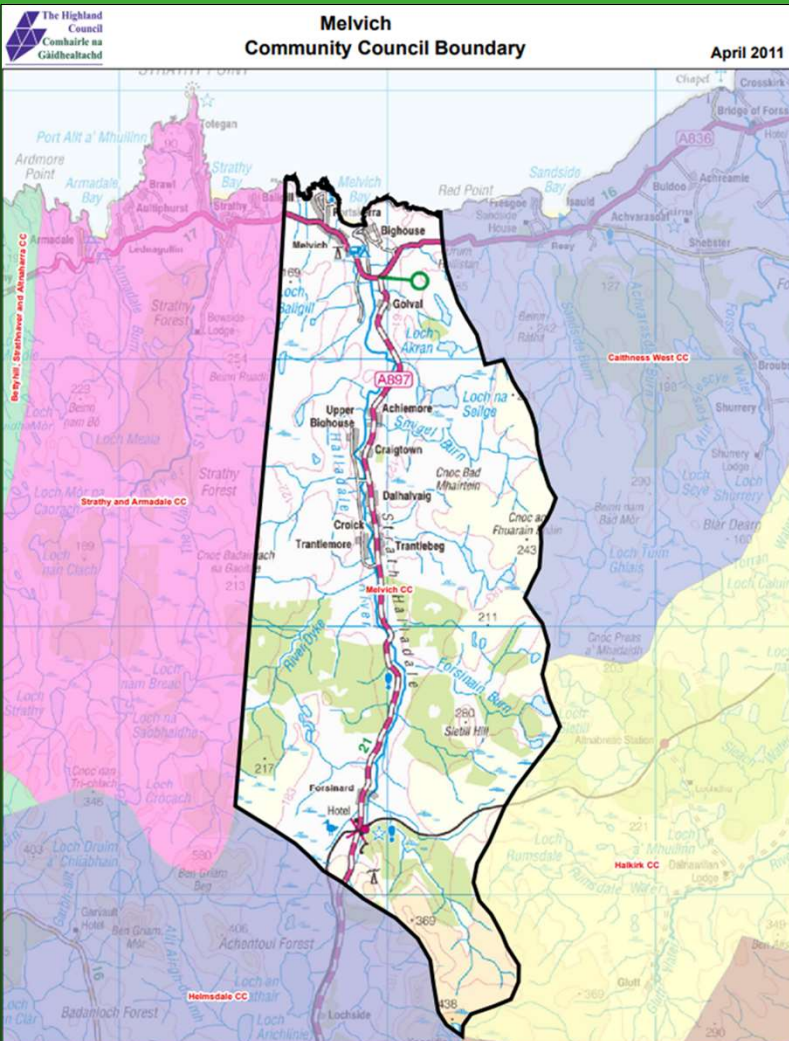
Community Action Plan

- Joint meetings held between Melvich Community SCIO and Melvich Community Council (with some invited guests) established need for a Community Action Plan (CAP) for Melvich Community Council (MCC) Area
- Terms of reference for Community Action plan steering group agreed
- Invitation To Tender for independent consultant to perform CAP consultation drafted and is in process of being finalised.
- Whole community and all relevant stakeholders (>60) will be invited to participate.
- The **CAP will help demonstrate needs / priorities for our area which will help us with future grant funding applications** (essential for the hub project).



Community Action Plan

- Independent contractor will undertake community consultation throughout Melvich Community Council area.
- **Some community engagement events should be held during the first half of 2023.**
- **Please get involved with these. Share your vision for the area. Don't be constrained by what we have or don't have at the moment. How can we improve our area in the short, medium and long term?**
- The CAP will help define what the grant funding priorities for the area should be so please get involved.
- Intent is to have a CAP in place this Summer for MCC area (subject to contractor availability).



Melvich Community SCIO

Community Growing Project

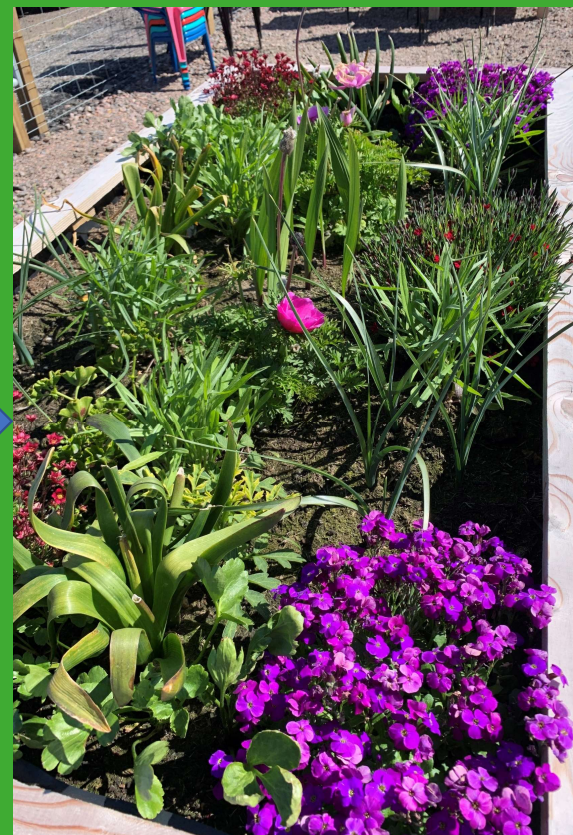
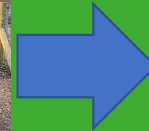
OSCR
Scottish Charity Regulator
www.oscr.org.uk

**Registered
SCIO
SC050942**



Community growing project

- Site of former village hall transformed into a community outdoor space and small scale vegetable/fruit production for community/visitors to use.



- Huge thanks to all the volunteers involved in creating and maintaining it.

Community growing project

Do you want to get involved in the community growing project this year?



Melvich Community SCIO

Portskerra Play Park

OSCR
Scottish Charity Regulator
www.oscr.org.uk

**Registered
SCIO
SC050942**



Melvich
Community
SCIO

Portskerra Play Park(1)

- Play Park closed in 2020. Highland Council removed all Play Park equipment in 2022. Not being replaced by them.
- Our children need a local play park.
- Melvich Community Council agreed to Melvich Community SCIO to take the lead on sorting the play park for our community.
- Sub-committee formed to move this project forward.
- **Would you like to join this sub-committee and help deliver a new play park in Portskerra?**



Portskerra Play Park (2)

- Community Asset Transfer (CAT) request has been submitted to Highland Council.
- Funding application to SSE Strathy North Community Benefit Fund was successful so we have money available for covering CAT legal fees and legal fees for an interim lease.
- Design specifications being drafted and engagement with potential equipment suppliers started.





Portskerra Play Park (3)

- First fund raiser (“Kids Christmas Challenge”) held for Play Park on 3/12/2022 – approx. £1,000 raised by our community for this project.
- £2,242.07 received from North West Sutherland Council for Community Action (NWSCCA) has been ring fenced against this project too.
- We need to raise more funds for this project. New play parks cost around £150,000 !
- Do you want to get involved with helping us run fund raising events for a new Play Park or to help apply for grant funds?

Portskerra Play Park

We are fundraising for a new
Portskerra Play Park
Please support us if you can!

Donate by text

To donate £5, text NTPN04 to 70970
To donate £10, text NTPN04 to 70191

Donate online



<http://easydonate.org/NTPN04>



Melvich Community SCIO

Photography competition for 2024 calendar

OSCR
Scottish Charity Regulator
www.oscr.org.uk

**Registered
SCIO
SC050942**





Photography competition (1)

Janet and David Southard from Wild Arena Ltd at Forsinard Lodge are leading this competition for us. Big thanks to them for taking this on.



The competition brief is simple: **We are looking for images showcasing the local area (within Melvich Community Council area boundaries) and its natural beauty.** You can include people, wildlife, and landscapes. We are looking for uplifting pictures to carry us all through the year!



Photography competition (2)

Photographs will be broken into monthly categories of the 4 seasons:

Spring: March / April / May;

Summer: June / July / August;

Autumn: September / October / November;

Winter: December / January / February.

All the winning images will then be published in a Melvich Community SCIO 2024 calendar, which will be available for purchase to help raise funds for the local community.





Note: Trophy shown for illustration purposes only. Actual trophy has not yet been purchased.

Photography competition (3)

Prizes

There will be **12 category winners** (one for each month) **and** then, **an overall winner**, selected from the 12 category winners.

Each monthly category winner's image will be published in the corresponding month within the competitions published calendar and the winners will receive a free copy of the calendar and a category winner certificate.

The overall winner will be selected by a 'people's choice' vote and will have their image printed on the front of the calendar. The overall winner will also get a free copy of the calendar, an overall winner certificate and trophy.

Photography competition (4)

How to enter

Entry to the competition is completely free.

To enter simply send your pictures (as a JPEG file no larger than 5Mb please) to us via email at

photo-competition@melvichcommunityscio.org

You may submit up to 4 images in total, one per season.

Please also state where the photo was taken. Only submit photos taken within Melvich Community Council area boundaries please as we are trying to showcase our wonderful area.

Entries must be submitted by 25th August 2023.

Please see competition rules for further info.



Melvich Community SCIO

Community events

OSCR
Scottish Charity Regulator
www.oscr.org.uk

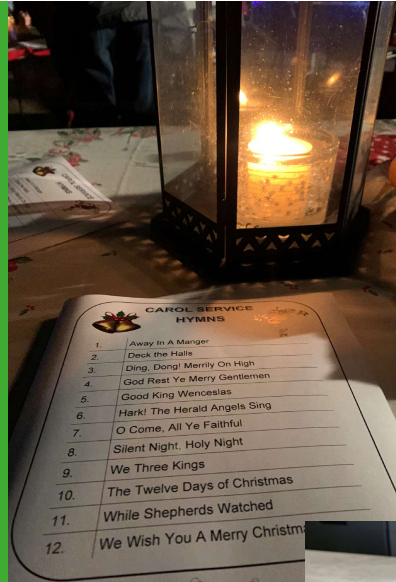
**Registered
SCIO
SC050942**



Melvich
Community
SCIO

Community events

- Volunteers have helped run various events for our community over the last year.
- Not all of these are fund raisers and a grant from SSE Strathy North Windfarm community benefit fund is being used to offset costs.
- Thanks to all the volunteers putting on the events and it is great to see our community out again enjoying themselves.





Community events

What sorts of events do you want to see this year?

What sorts of events do you want to see happening in our new community hub?

Can you help us run some events?

Can you take the lead on organising an event or an activity?

Melvich Community SCIO

100 Club

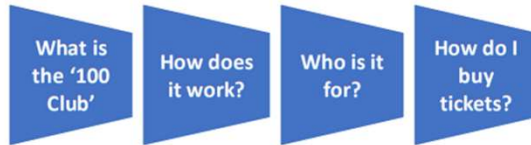
OSCR
Scottish Charity Regulator
www.oscr.org.uk

**Registered
SCIO
SC050942**





JOIN THE '100 CLUB'



3 x MONTHLY CASH PRIZES



2022-23 Session

1st Draw

Last Wednesday of October

WHAT IS THE '100' CLUB?

A '100 Club' is a private lottery limited to 100 participants. The purpose of the *Melvich Community 100 Club* is to raise funds to build, maintain and develop our replacement village hall as a resource for the whole community.

It is a fantastic way to raise funds for a new multi-functional, multi-generational, community hub and for all the community to get involved. For more information visit our web site www.melvichcommunityscio.org.

PLEASE READ THE FULL RULES HERE

SIGN UP TODAY

100 Club

- 3 cash prizes every month.
- Participating in it helps our community.
- Only £5 per ticket per month.
- You can purchase as many tickets as you like. Each ticket has an equal chance of winning.
- **Speak to us to get a form and sign up today.**
- Not too late to enter our next draw which is on Wednesday 25th January 2023.