



# CONFERENCES, MEETINGS & RETREATS



15786 Loyalist Parkway, Prince Edward County

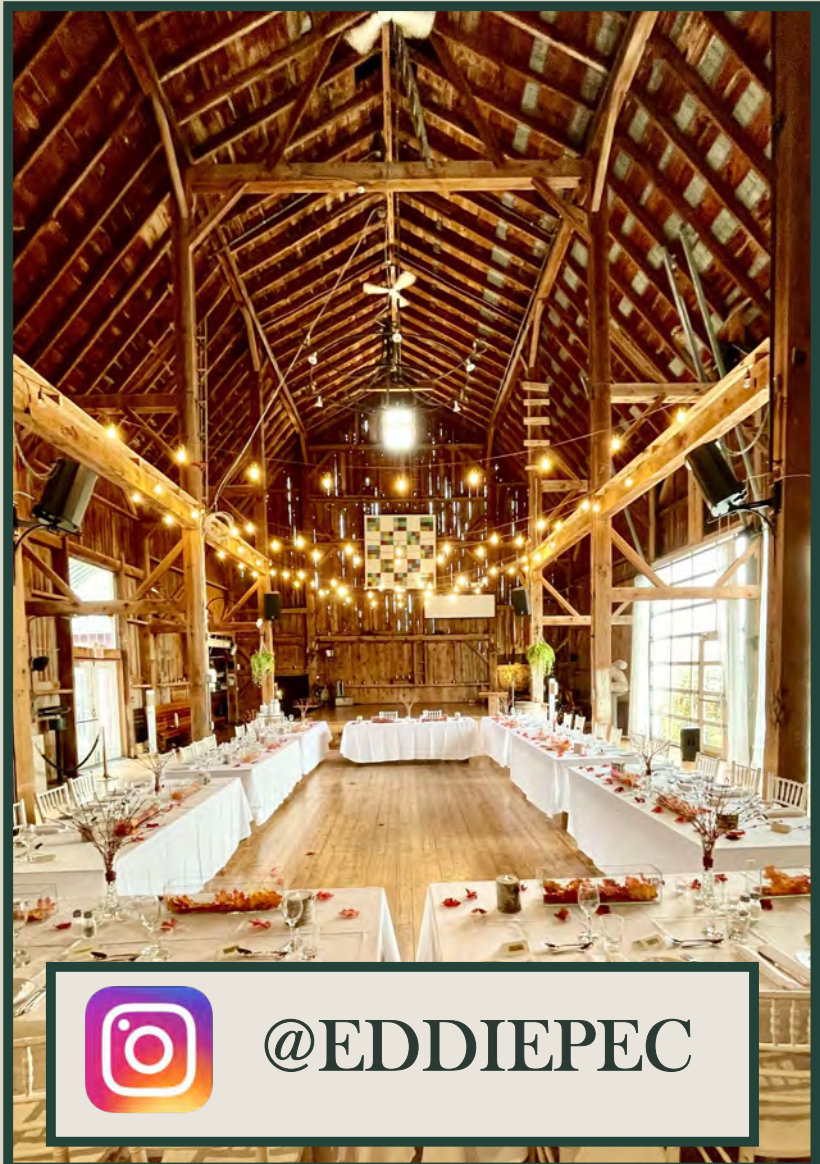


# The Eddie

The Eddie PEC offers a unique and picturesque venue for your next corporate event. Set against

the backdrop of a beautifully well-preserved 160-year-old Manor House and iconic Red Barn, The Eddie provides the ideal location to bring together your colleagues or co-workers to rebuild after Covid. Our many open-air settings will ensure your event delegates feel safe returning to large-scale events.

Situated on a 78-acre farm with renovated bedrooms and a variety of settings to explore -such as the large pond with fountain and daybeds, several landscaped gardens, and charming heritage buildings - The Eddie offers an array of spaces to make your event or conference unforgettable.



@EDDIEPEC



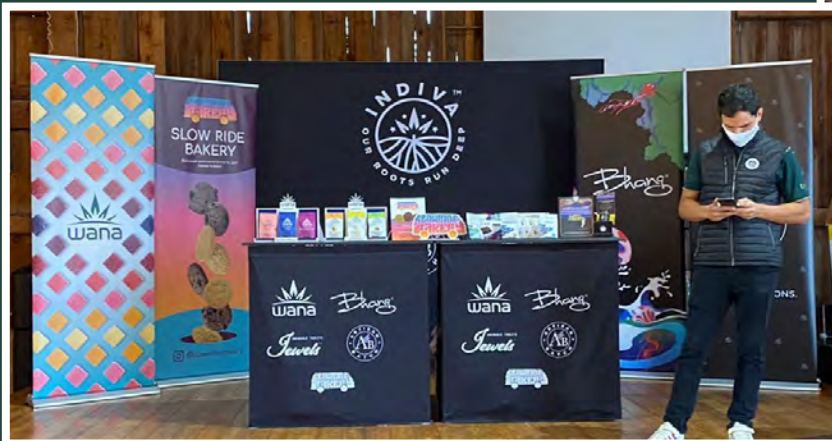
# The Eddie



Passionate about well-styled and well-executed events and coming from extensive experience in meetings, events and incentive travel, we hope to bring The Eddie's beauty and charm to your corporate group.

All multi-day events include one overnight planning stay\* to ensure event organizers have the opportunity to see what The Eddie - and The County - can do to make your event one delegates will be talking about for years to come.

The Red Barn & BMO Pavilion at The Eddie offer large spaces for up to 165 guests - ideal for speakers, presentation and seminars, as well as three smaller breakout areas.



\* Stays are credited to conferences and events invoiced over \$20,000





## *Why host your conference at The Eddie?*

- ◇ Onsite Accommodation
- ◇ Onsite Event Coordination
- ◇ Outdoor Stage with seating
- ◇ Covered reception areas and on-site bar for conference social events
- ◇ Conference organizers office provided onsite
- ◇ Formal or casual dinner options available
- ◇ Standard AV included (projector, wireless mics, central
- ◇ 160 Year Old Heritage Barn
- ◇ Central County Location
- ◇ 7km to Bloomfield and 3.7 kms to Wellington including several hotels and inns for delegates
- ◇ Close proximity and relationships with local attractions
- ◇ Fully Licenced venue
- ◇ Several Breakout spaces







*Unique Spaces for a Memorable Event*

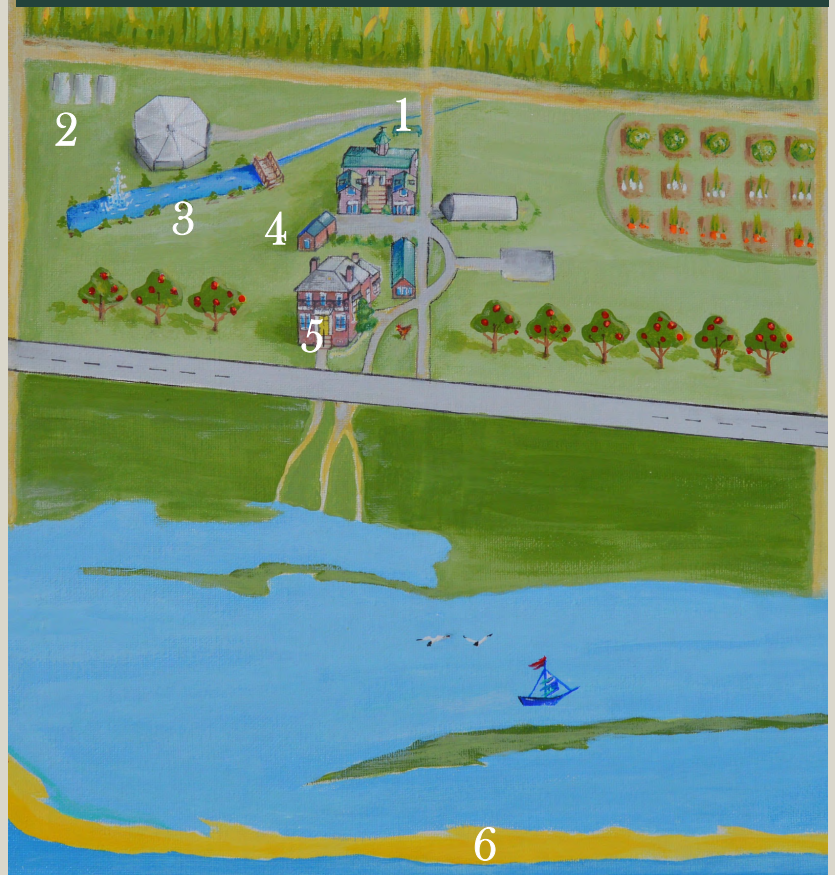


The stages in The Red Barn and at the BMO Pavilion are ideal for companies wanting to host employee appreciation events from concerts to comedians or day-time speakers.

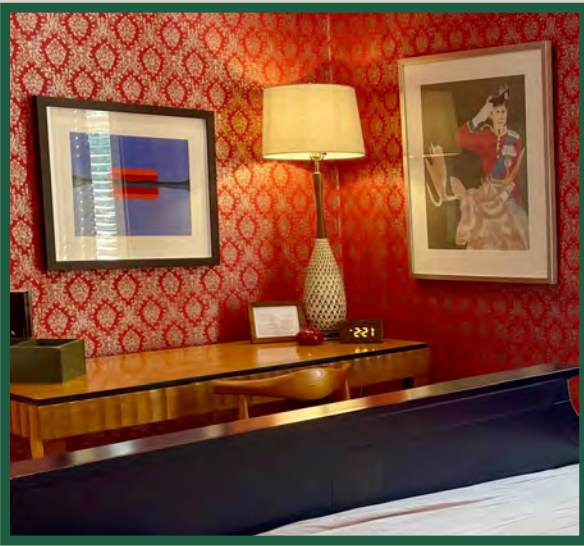




What your delegates will see when you host your conference at The Eddie in Prince Edward County







## *The Mian House*

Full Breakfast daily for overnight guests staying in one of  
ten onsite suites, including five in the Main House





# The Carriage House

2 Bed/2 Bath Suite in private building  
Ideal for event organizers  
Kitchenette with Nespresso  
2 Living Areas each with Cable TV



3 AFFORDABLE QUEEN *Bunkie's*



# Several Spaces for Social Events



The Clubhouse Bar



Pond-Side BBQ

## FORMAL & INFORMAL SPACES

IDEAL FOR EVERYTHING FROM CONCERTS AND BAR NIGHTS TO  
FIVE COURSE DINNERS AND TEAM BUILDING ACTIVITIES



The Sheep Shed

Tailor the event to your vision  
and your delegates' needs.

Choose an outside caterer  
that reflects the event you  
are trying to create, or use  
our inhouse catering team  
to create menus to suit  
your group.

Unique in The County offering several distinct indoor and outdoor spaces,  
The Eddie offers a variety of areas ideal for multi day events, or events  
requiring breakout rooms and multi functional spaces.



# The Eddie One Stop Venue

From Team Building activities to gala dinners, The Eddie offers a one stop venue for event organizers. With extensive onsite décor, AV, and access to amazing local vendors, we will work with you to bring the best of The County's suppliers to make your event seamless and special.

All Multi day conferences include a dedicated office for event organizers to base themselves for the duration of the event to ensure our clients have an office to work from when onsite.



Extensive onsite decor



Organizer Private Office



# The Eddie



## LOCAL ACTIVITIES TEAM BUILDING

- ◇ Dozens of Wineries
- ◇ Incredible Breweries
- ◇ 10 min from Sandbanks
- ◇ Millennium Trail (access onsite)
- ◇ Lake Ontario and West Lake
- ◇ Farm to Table Experiences
- ◇ Learn with Local Makers
- ◇ Astrology workshops
- ◇ Golf
- ◇ Bike Rentals
- ◇ Wake Boarding

## Testimonials

### *Andrew, 2021 Conference Organizer*

*"You two should be extremely proud of yourselves. You made a big week for my team beyond special and memorable. The farm looked nothing short of epic, your service and execution flawless. All I can say is thank you and so well done. 10/10 in all respects."*

### *Liam, 2021 Conference Delegate*

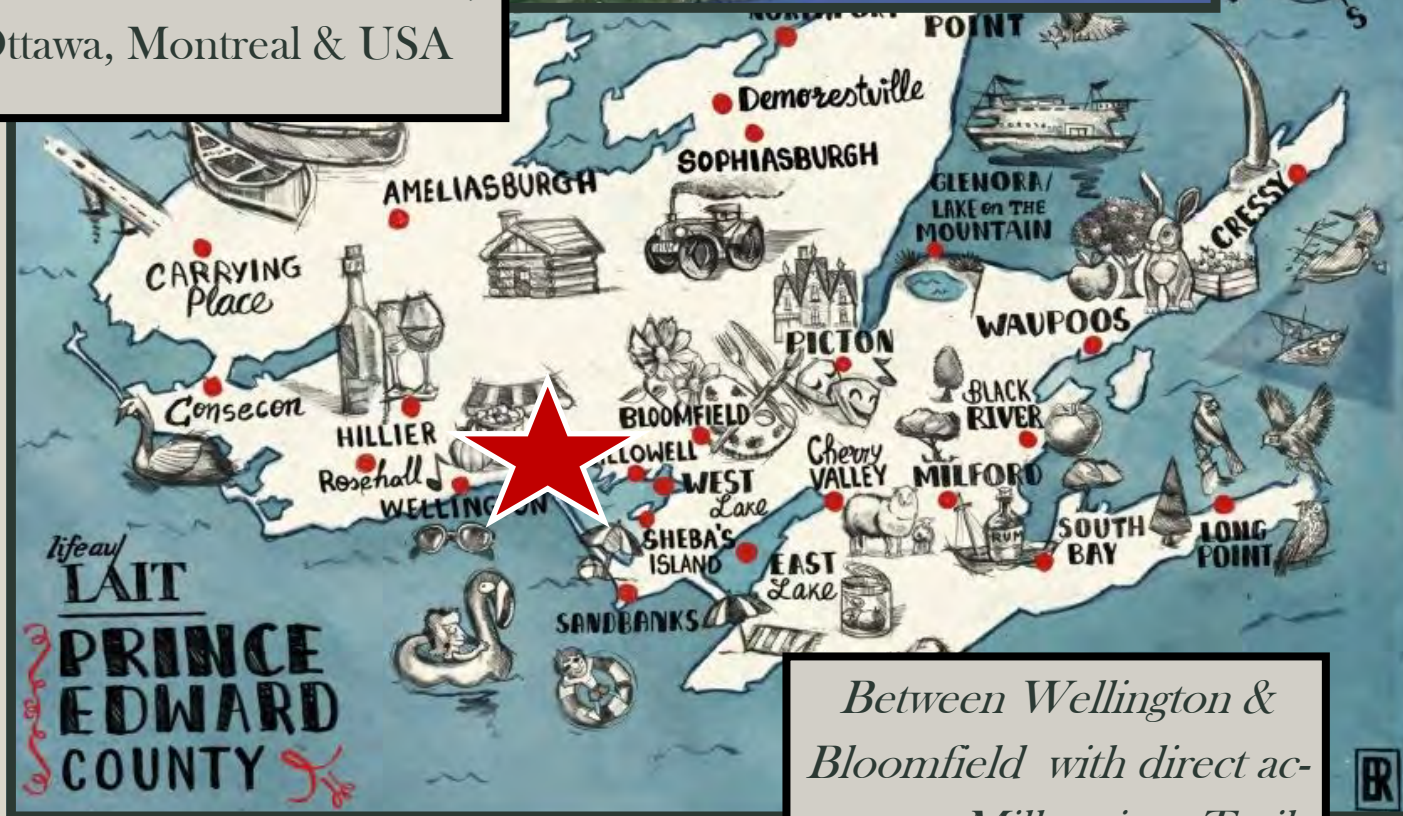
*"Wow, wow, wow. Just spent a few days at this property for a work retreat and it was absolutely incredible. From the moment we arrived on the property we became the VIPs. The staff are friendly and the most accommodating people I've ever met in my life. We had multiple allergy restrictions and there was ALWAYS an option available."*







Central location to Toronto,  
Ottawa, Montreal & USA



*Between Wellington &  
Bloomfield with direct ac-  
cess to Millennium Trail*

CONTACT US FOR INFO & PRICING

[WWW.THEEDDIE.CA](http://WWW.THEEDDIE.CA)

[INFO@THEEDDIE.CA](mailto:INFO@THEEDDIE.CA)

1-833-PEC-FARM

@EDDIEPEC

