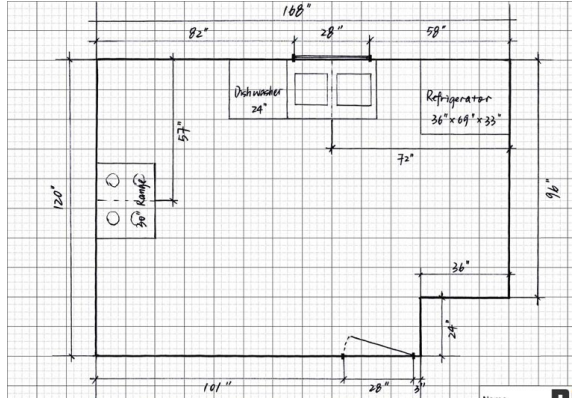


	Entry Level Package <i>Perfect for those with a small project who want to explore the idea of a remodel.</i>	Intermediate Package <i>Ideal for those wanting to try different layouts and/or opening up a space.</i>	Advanced Package <i>This package is for those wanting to open up a space or explore major reconfigurations.</i>
<i>Number of Designs</i>	1	2	2
<i>Expert Design Advice</i>	Included	Included	Included
<i>Number of Revisions</i>	1	1	2
<i>3D Virtual Tour of Designs</i>	Included	Included	Included
<i>Copies of 3D Rendering Images</i>	Included	Included	Included
<i>Dimensioned Floor Plan</i>	X	Included	Included
<i>Cabinetry Elevations</i>	X	Included	Included
<i>Electrical Plan</i>	X	X	Included
<i>Finish Selection Mood Board</i>	X	X	Included
<i>Links to Material Selections</i>	X	X	Included
<i>Pricing starting at</i>	\$450	\$950	\$1450

4 EASY STEPS

1 SEND US YOUR MEASUREMENTS



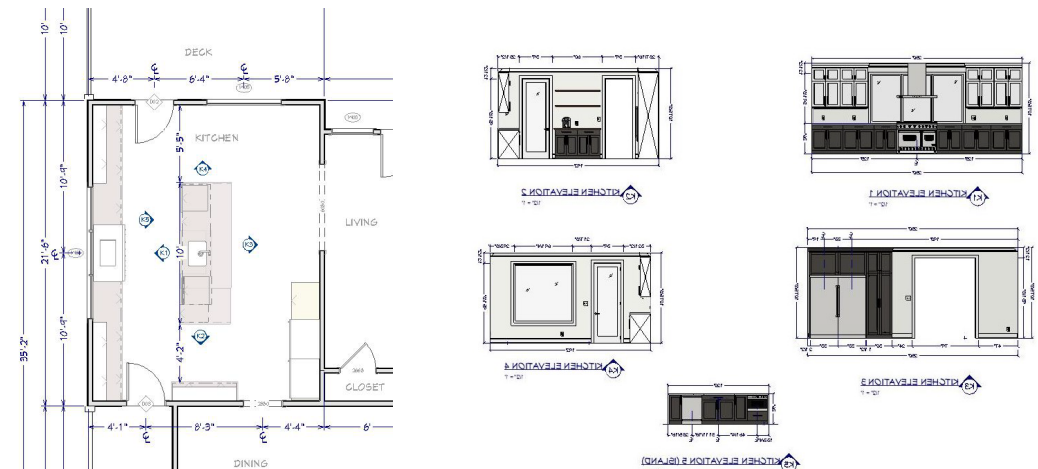
2 TELL US ABOUT YOUR DREAM SPACE AND WE WILL DESIGN IT



3 LET US SHOW YOU HOW TO BRING IT ALL TOGETHER



4 SHOW YOUR CONTRACTOR HOW TO BRING IT TO LIFE

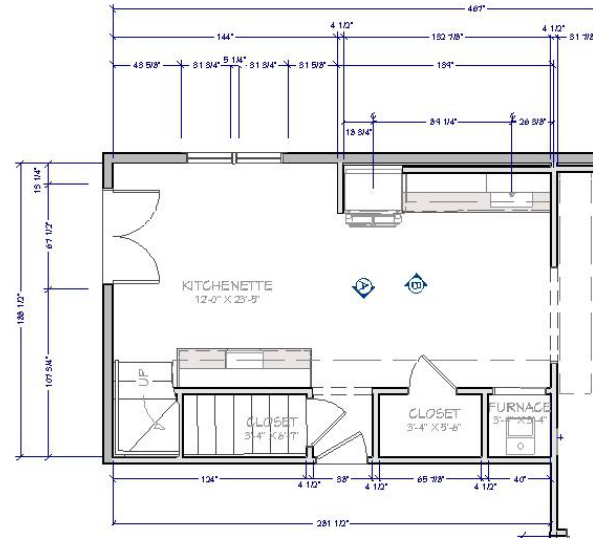


Examples from the Advanced Package

From the Before



To the Vision

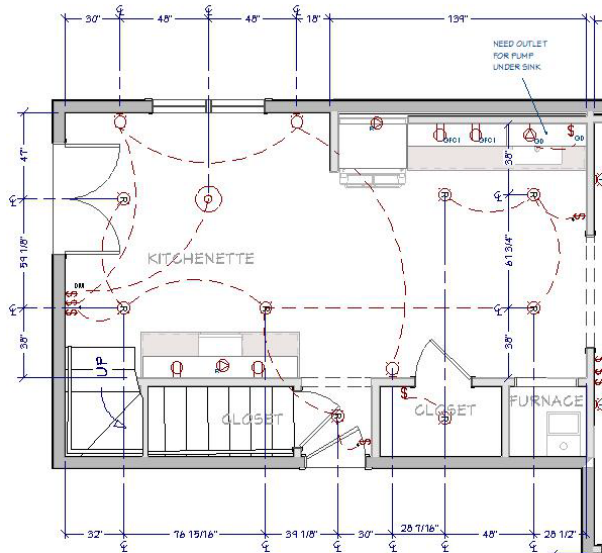
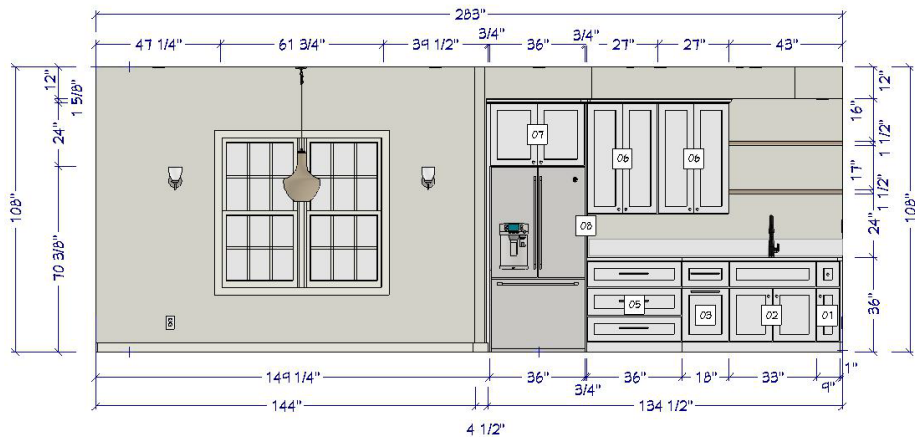
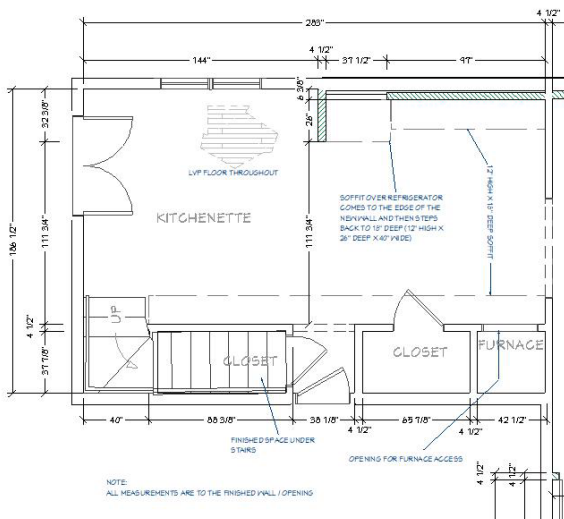


Examples from the Advanced Package

Putting the Plan in Place



To Enable the Reality



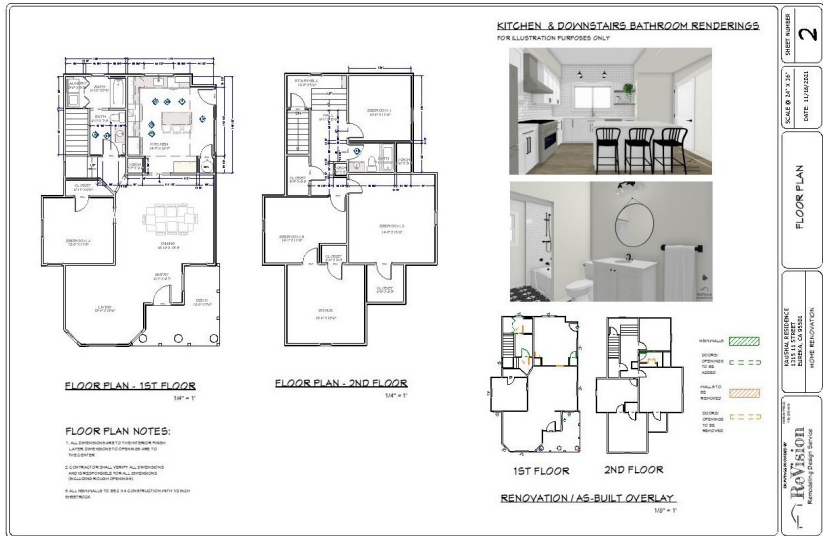
3D VIRTUAL TOUR – [click to view](#)



HD RENDERS



CONSTRUCTION DOCUMENTS



FAQ

Why should I invest in a design plan if I am hiring a contractor?

While a good contractor should be able to give you input on the design for your space, their focus is on the construction portion of the job. Investing in a design plan upfront will give you time to explore different design options and feel confident you have the best plan in place going into construction. The plan also becomes your resource when obtaining bids and hiring a contractor. Since each contractor will be referencing the same plan, you can easily compare their bids to obtain the most competitive rate. Additionally, having everything documented reduces the chance of miscommunication that can lead to costly change orders mid-construction. Having a plan is also a huge benefit for the contractor, helping them to streamline the process of bringing in subcontractors and material.

How long will it take to get my designs and how will I view them?

Once we have discussed your design goals and have the measurements for your space, the design options are typically ready within two weeks. We will schedule a virtual meeting to go over your customized design options.

What are construction documents and why do I need them?

The construction documents are a set of plans used to obtain a permit from the city or county. These plans are also used by the construction crew in order to create the design as it is pictured. If you are doing any renovation that requires a permit, you or your contractor will need to submit a plan for approval.

READY TO TAKE MEASUREMENTS AND PHOTOS OF YOUR SPACE?

Below are some steps to guide you through the process. Need additional help? Give us a call and we will walk through it together.

Use your iPhone Pro or iPad Pro (2020 release or later) and scan your room to get measurements

- (1) Download the Canvas.io App to get started
- (2) See canvas.io for details on supported devices and a video on how to scan your space
- (3) Upload your scan to Canvas and choose Scan To CAD
- (4) Select Chief Architect and Place Order (orders are \$0.15/square foot)
- (5) Email me your order once you receive it (usually within 2 business days)
- (6) I will use the file to get started designing your space

Don't have access to an apple device? See the next page for how to take measurements

Taking Photos

- (1) Stand toward the center of the room and choose one corner to begin taking photos
- (2) Snap your first picture of that area of the room and then move over to capture the next section
- (3) Continue taking photos until you have created a 360-degree view of the space

How to Measure Your Room

- (1) Begin by drawing the shape of the room
- (2) Draw any windows, doors or doorways onto the plan (note the direction of the door swing)
- (3) Draw your current kitchen/bath layout (cabinetry locations, island/peninsula) and note the location of your appliances/fixtures
- (4) Note any obstacles of concern (columns, heater, etc)
- (5) Pick a corner to begin at and measure the length of each wall until you reach the corner that you started at
- (6) Go back and measure where the doors, doorways and windows are located, as well as their size
 - a) Measure the distance from the corner to the opening, and then from the other side of the opening to the next corner
 - b) Measure the width and height of each opening
 - c) For windows – measure the distance from the floor to the bottom of the window opening
 - d) When there is more than one opening on a wall, measure the distance between openings
- (7) Measure the size and location of all appliances (oven , dishwasher, refrigerator, etc.) and fixture (sink, tub, shower head, etc.)
 - a) Note the size of each appliance and fixture
 - b) Measure from one corner to the center of each appliance or fixture
- (8) Measure the width of the casing (trim that surrounds the doors, doorways and windows)
- (9) Measure the base board height
- (10) Measure the ceiling height (height from the floor to the ceiling)

Instructional video guide: <https://homedecorators.cabinetry.homedepot.com/howtomeasure.aspx>