



LACOE Head Start and Early Learning (HSEL)



Los Angeles County
Office of Education

Agenda



- Head Start & Early Head Start
- LACOE Head Start and Early Learning
- How we work
- Eligibility
- Inclusive ECE Supports (IEEEP)
- PUSD Head Start & Early Head Start

What is Head Start/Early Head Start?



- Free, federally funded programs
- Designed to prepare the youngest and most vulnerable children for success in school
- Support children with identified needs (physical and developmental), children in foster care, and children experiencing homelessness
- Provide comprehensive services, family engagement, and resources



Head Start



- Children from three to five years old
- Services provided in:
 - Center-based (classrooms – majority of slots)
 - Home-based (home visitors)
 - Family childcare



Early Head Start

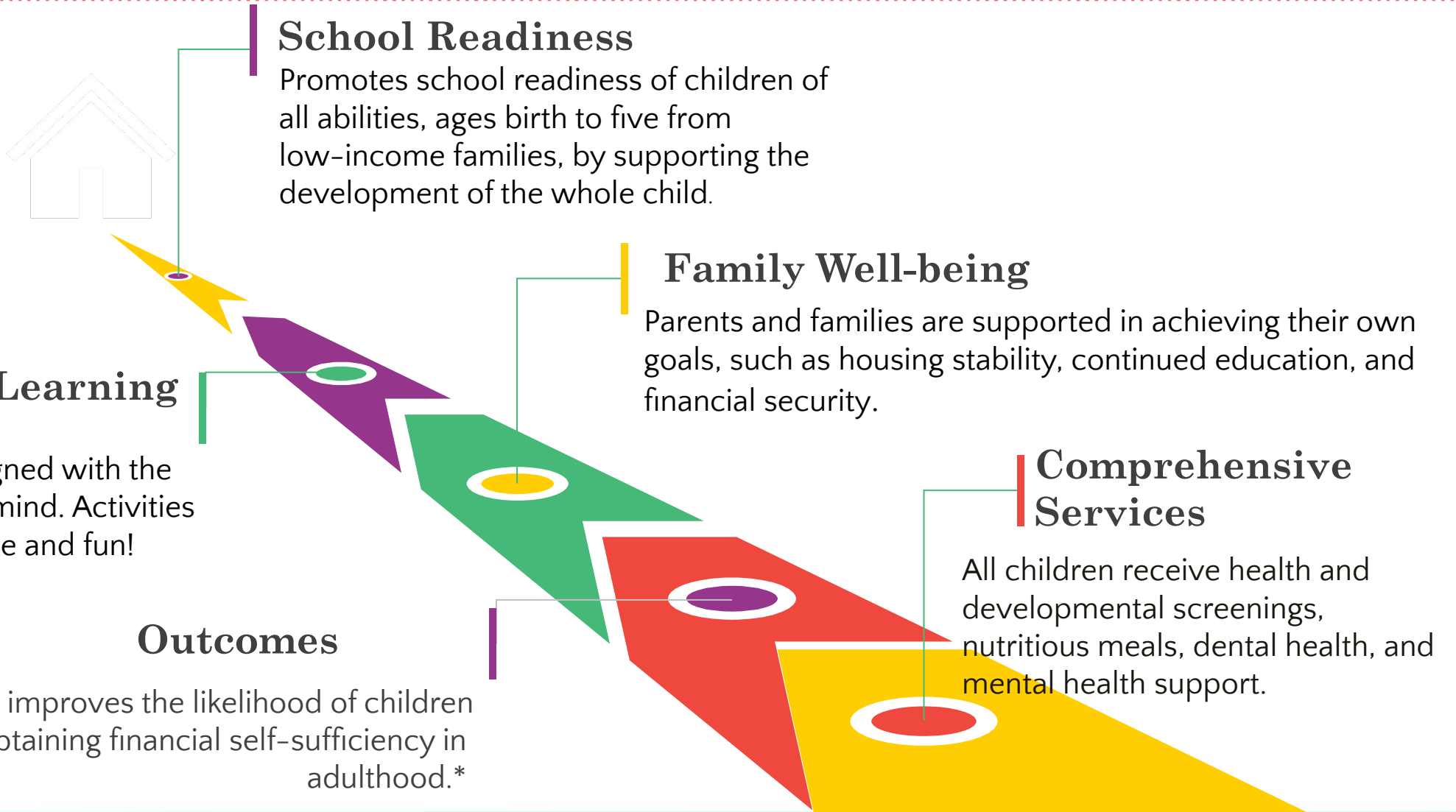
- Infants or toddlers younger than three years old and expectant families
- Children receive services in:
 - Center-based classrooms
 - Home-based (majority of slots)
 - Family childcare

What is home-based?

- Educator works with parent/guardian at home
- Meetings are once a week
- Parent and child attend at least one monthly socialization



Why Head Start?



*Head Start, the Public Preschool Program, More Than Pays for Itself – UCLA Anderson Review 5.19.21



Why Head Start? *Benefits & Services*



Health & Nutrition

- ✎ Referrals to medical and dental providers
- ✎ Developmental screenings
- ✎ Healthy meals



Child Development/ Education

- ✎ Evidence-based children's curricula by well-trained teachers and staff
- ✎ Early reading & math introduced in a fun way
- ✎ Safe classrooms (indoors and outdoors)



Social- Emotional

- ✎ Assessment, screening & intervention
- ✎ Trauma-informed approach leads to referrals for mental health and supportive services
- ✎ Services for enrolled children, their families AND staff



Family/ Community Engagement

- ✎ Parent involvement includes governance and volunteering opportunities
- ✎ Community partnerships
- ✎ Family goal setting



Disability Services

- ✎ Children included in all activities
- ✎ Staff trained to support families and connect to resources

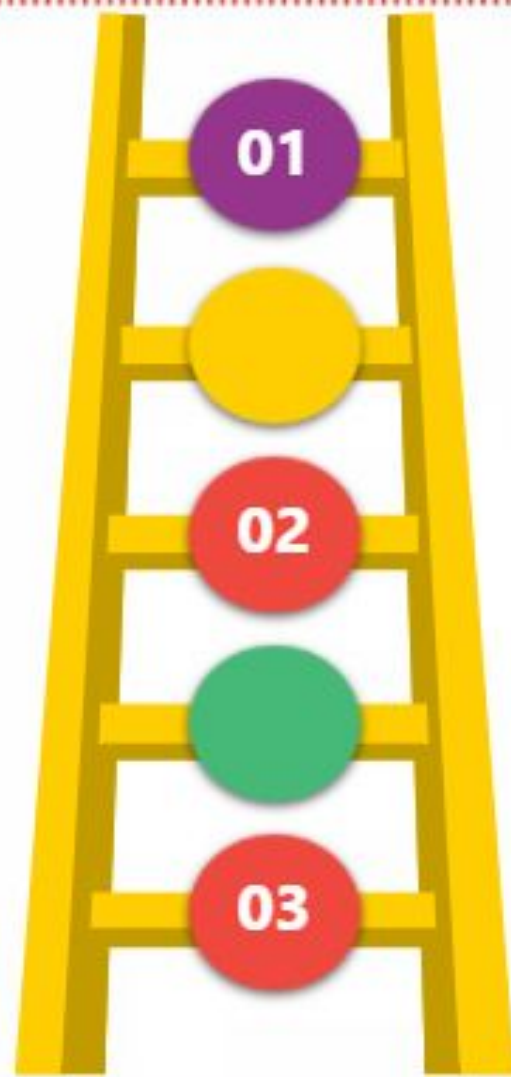


LACOE HSEL

The Los Angeles County Office of Education (LACOE) Head Start and Early Learning Division (HSEL) offers a comprehensive prenatal-to-five early learning program. We partner with families, communities, and providers to give children of all abilities the skills to succeed in school and life.



How LACOE Head Start Works



Contract with school districts and nonprofit organizations across LA county (delegate agencies)



Delegate agencies (DAs) provide direct services to children and families



LACOE provides funding, monitoring, training/technical assistance, etc., to DAs



LACOE HSEL

Delegate Agencies: Private Nonprofit Providers

- BLIND CHILDREN'S CENTER (BCC)*
- CHILDREN'S INSTITUTE, INC. (CII)*
- FOUNDATION FOR EARLY CHILDHOOD EDUCATION, INC. (FOUNDATION)*
 - MEXICAN AMERICAN OPPORTUNITY FOUNDATION (MAOF)*
 - PACIFIC ASIAN CONSORTIUM IN EMPLOYMENT (PACE)*
 - PARA LOS NIÑOS (PLN)*
- PLAZA DE LA RAZA CHILD DEVELOPMENT SERVICES, INC. (PLAZA)*
 - ST. ANNE'S FAMILY SERVICES* (ST. ANNE'S)
 - VOLUNTEERS OF AMERICA (VOA)+

*EHS & HS Provider
**HS Provider Only
+State Preschool Only



LACOE HSEL

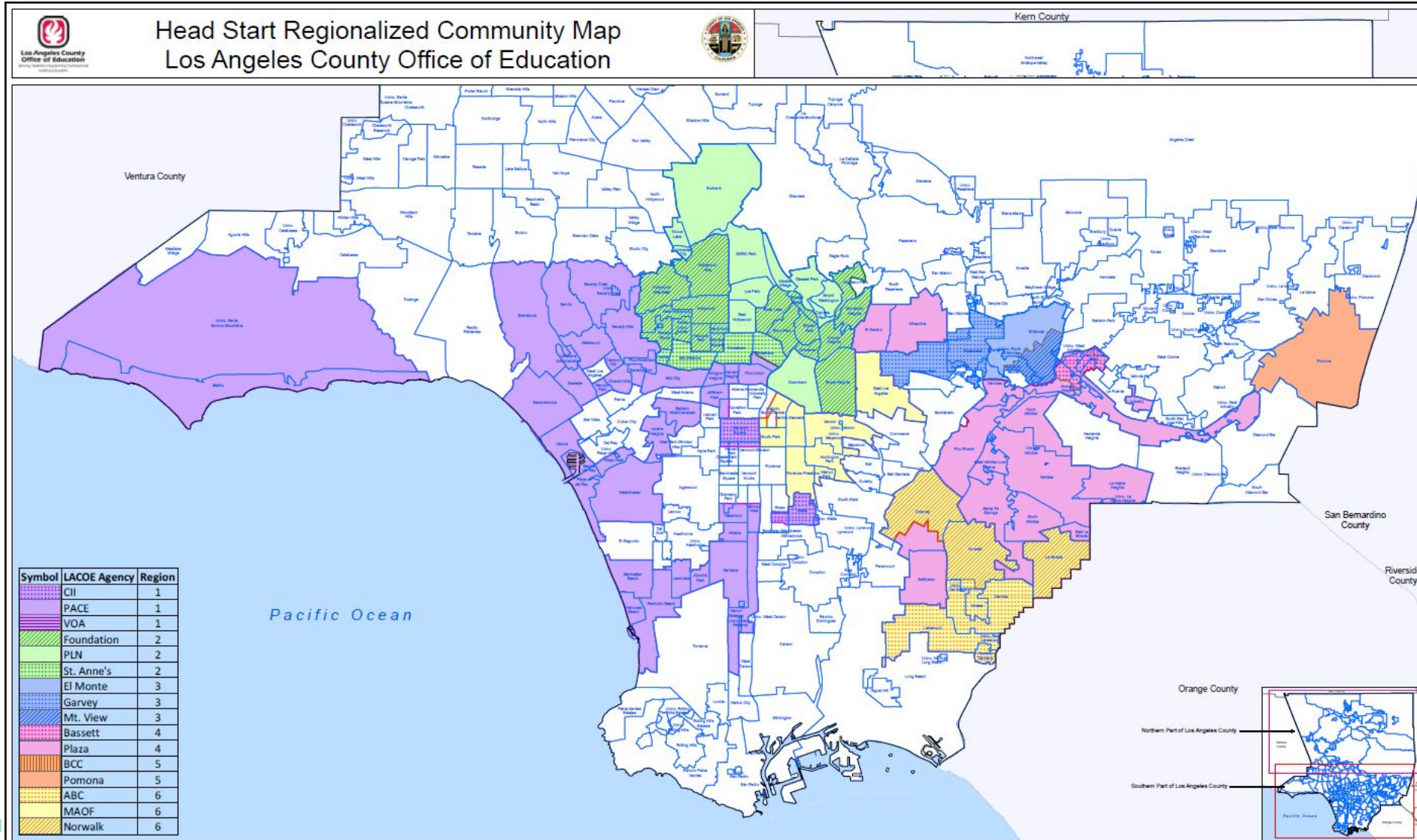
Delegate Agencies: Public Program Providers

- ABC UNIFIED SCHOOL DISTRICT**
- BASSETT UNIFIED SCHOOL DISTRICT*
- EL MONTE CITY SCHOOL DISTRICT*
 - GARVEY SCHOOL DISTRICT*
- MOUNTAIN VIEW SCHOOL DISTRICT*
- NORWALK-LA MIRADA UNIFIED SCHOOL DISTRICT*
- POMONA UNIFIED SCHOOL DISTRICT*

*EHS & HS Provider
**HS Provider Only
+State Preschool Only



LACOE HSEL Service Area



| Symbol | LACOE Agency | Region |
|------------------|--------------|--------|
| [Purple Dotted] | CII | 1 |
| [Purple Solid] | PACE | 1 |
| [Purple Striped] | VOA | 1 |
| [Green Striped] | Foundation | 2 |
| [Green Solid] | PLN | 2 |
| [Green Dotted] | St. Anne's | 2 |
| [Blue Striped] | El Monte | 3 |
| [Blue Solid] | Garvey | 3 |
| [Blue Dotted] | Mt. View | 3 |
| [Pink Striped] | Bassett | 4 |
| [Pink Solid] | Plaza | 4 |
| [Orange Striped] | BCC | 5 |
| [Orange Solid] | Pomona | 5 |
| [Yellow Striped] | ABC | 6 |
| [Yellow Solid] | MAOF | 6 |
| [Yellow Dotted] | Norwalk | 6 |

LACOE (Head Start) Regions:

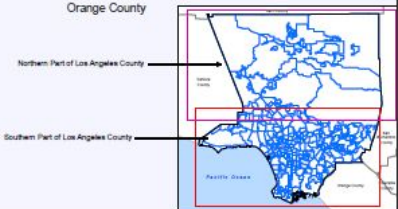
- Region 1
- Region 2
- Region 3
- Region 4
- Region 5
- Region 6

Hoods Community Boundaries

0 1 2 4 Miles

Data Source:
 LACOE Agency and Region boundary data from LACOE (as of September 2019).
 Community boundary data from The Los Angeles Times (as of 2013).
 Other Geographic data from LA County's GIS Repository.
 All rights reserved.

Map created on: Thursday, July 21, 2022



Disclaimer:
 This product is for informational purposes and may not have been prepared for, or be suitable for legal, engineering, or surveying purposes. Users of this information should review or consult the primary data and information sources to ascertain the usability of the information.



Eligibility

- Birth to three years old (EHS); three to five years old (HS)
- Household annual income below federal poverty level
 - proof of income: tax returns, W-2's, check stubs, etc.)
- Families receiving public assistance (TANF/SSI/SNAP)
- Families experiencing homelessness
- Foster care
- Pregnant women (EHS home-based services)



Enrollment - Selection

Head Start and Early Head Start programs must enroll children with disabilities for at least 10 percent of the total number of funded slots.

Children with an IFSP, if enrolled in EHS, or an IEP, if enrolled in HS, may be counted in the 10 percent.



Eligibility Exceptions

- 10% of children may be enrolled from families with incomes above the Federal Poverty Guidelines (FPL)
- An additional 35% of children from families with incomes above the FPL but below 130% of the poverty line may be enrolled, if the program can ensure certain conditions are met.
- 10% Disabilities



Inclusive ECE (IEEEP Grant)



Intensive Individualized Coaching

Mobile Services
Hope on Wheels

**Inclusive Infrastructure/
Facilities**

Digital Resource Library

Team Simulated Coaching

LACOE Regionalized Training & Inclusive Institutes

Inclusive Leadership Team



Inclusive Coaching Supports

Intensive Individual Coaching (IIC): to support teaching teams in supporting children with moderate/ severe needs or disabilities as well as to promote inclusive practices

Team Simulated Coaching (TSC): to support the support staff (coaches, supervisors, coordinators) provided as a top-down approach. It can be done virtually or in person.



Intensive Individualized Coaching (IIC)

Supports the teaching team and those that support the team.



It is based on child's need; children with moderate to severe disabilities.



Ongoing supports, frequent contacts, meetings and/or observations.



Development of ICAP with ongoing support for goal accomplishment



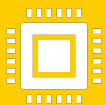
IIC provides instructional best practices and strategies for children with disabilities.



Team Simulated Coaching



Who: Support staff; coaches coordinators, supervisors who support teaching teams and some teaching teams.



What: short term support (1-3 events) which includes a PD with a simulated experience and then is needed follow up



How: Simulated experiences can include role play, scenarios, data collection, video review, creating of materials and practice, and more!



Goal: to build skills and capacity from the top down to support and disseminate knowledge and skills across all sites and staff in need.



Team Simulated Coaching - Topics

Implicit Biases around children with disabilities

Understanding biting behavior and appropriate replacement behaviors

Universal Tier 1 checklist- how to implement it and support classrooms

Supporting families with a new diagnosis

Sensory inclusive materials

Fine motor inclusive support

Philosophy of inclusion

Basics of IEP/IFSP

Teaching replacement behaviors

Behavior Data Collection and Analysis

Creating behavior support
Implementing communication supports



Adaptive Equipment







Mobile Services





Inclusive Online Course


 **Los Angeles County Office of Education**
Serving Students • Supporting Communities • Leading Educators

LACOE Head Start and Early Learning (HSEL)
Inclusive Early Childhood Education (IECE)
Inclusion Practices Course 

Certificate in Inclusion Practices

Gain knowledge and skills to increase access and participation of every student in your classroom.

February 2024



BACKGROUND

IECE unit provides training and technical assistance to support inclusive environments and build staff capacity of early childcare and education (ECE) providers to increase access, participation, and support for children birth to five years with severe disabilities. As a result of this effort, IECE is pleased to offer a new online Inclusion Practices Course in partnership with Cal-State-Los Angeles: College of Professional and Global Education (PaGE) to educators who work with children with special needs in an inclusive environment.

What is an Inclusion Practices Course Certificate?

- A certificate that demonstrates learning and practice to support inclusive environments.
- Knowledge to increase access and participation of children birth to five years with special needs.
- Increase and update your professional skills and knowledge to be more effective in the classroom.
- Be prepared to better serve every child in your classroom including children with special needs.
- Certificate recognized by Early Head Start and Head Start agencies.

- Certificate program that prepares Early Head Start and Head Start General Education Teachers to address the intricacies of educating children with special needs in an inclusive environment.
- Course designed by an Inclusive ECE team with expertise in the following areas: Board Certified Behavior Analyst (BCBA), Occupational Therapist, Licensed Marriage and Family Therapist, School Psychologist, Registered Nurse and Educators in Child Development and Special Education.
- Online platform with synchronous and asynchronous topics in the practice of special education services and inclusion aligned with the California ECE Competencies to increase an educators' knowledge, skills, and abilities.
- Course Credit - Three semester units of elective coursework is provided by Cal-State-Los Angeles: College of Professional and Global Education (PaGE). Also, upon the successful completion of the course a Certificate in Inclusion Practices will be provided.

• Cost: \$250.00
(Scholarship available)

Inclusive Classroom
Demonstration Site

Collaborative Approach:

Disability Coordinator

Education Manager

Education Coordinator

Education Consultant

Facilities Manager

Disability Services Consultant

Lead Teacher

Assistant Teachers



Emphasis:

- Improving Classroom Materials to promote inclusion
- Offer ALL children with best practices in early childhood education
- Learning experiences that take into account every child's needs

Ongoing Collaboration

Pomona improving and becoming leaders in promoting inclusion



Pomona USD EHS/HS Program

- Pomona USD Early Head Start

- SGPRC & EHS Partnership:

- Developmental screeners, teacher data, and parent reports are used to identify infants and toddlers who displays signs of developmental delays or disabilities.
 - PUSD EHS makes referrals to SGPRC for assessment & services.
 - Tracking of frequency/timeline of services.
 - IFSP goals are used to develop individualized lesson plans.
 - Inclusive environments to support all students with disabilities.
 - Supports with Transition Planning
 - Parent involvement & advocacy
 - Home-Based and Center-Based programs
 - Regional Center services can be provided in classroom
-
- Funded slots: **392**
 - Current Availability: **16** and **Waitlist Available**
 - Locations: **20** Home-Based Classes and **19** Center-Based Classes Across PUSD



Pomona USD EHS/HS Program

• Pomona USD Head Start

- Supports for children with disabilities in Early Head Start/Head Start
- Inclusive Environments- adaptive materials, sensory materials, adjusting teaching methods, etc.
- Collaborating with Pomona Unified Special Education in regards to assessment & data collection.
- Special Education are/or related services provided in the classroom setting & integrated in daily routines.
- Tracking of frequency/timeline of services.
 - Funded slots: **658**
 - Locations: **55** Classrooms Across PUSD
 - Current Availability: **Waitlist Available**



Pomona USD EHS/HS Program

Support and Services Available to Children and Families

- Education and Curriculum
- Disabilities Services
- Mental Health Services
- Nutrition Services
- Health Services
- Family and Community Partnerships
- Parent Involvement



CONFERENCE
Shaping the Future of Early Education

March 14, 2024

Administrators Day

March 15, 2024

Parents & Caregivers Day

March 16, 2024

Educators Day

Featured Topics:

- Creating Inclusive Classrooms
- “Just for Dads” Workshops
- Play-based Learning
- Leading in Universal Prekindergarten (UPK)



Los Angeles County
Office of Education

Registration Link:

<https://form.jotform.com/233245670171149>



THE BEEHIVE
961 EAST 61ST STREET,
LOS ANGELES, CA 90001

Announcements

Questions?



Contact Information

Los Angeles County Office of Education
Head Start and Early Learning Division
10100 Pioneer Blvd, Santa Fe Springs, CA 90670

Jesus Torres, Program Control Consultant

torres_jesus@lacoedu.edu

562-940-1769

Samantha Leavitt Gonzalez, OTD, OTR/L, Disabilities Consultant

Leavitt_Samantha@lacoedu.edu

Juan Preciado, Disabilities Consultant

Preciado_Juan@lacoedu.edu

For more information on our programs, please visit: www.prekkid.org



@lacoehdstart

<https://twitter.com/lacoehdstart>



@LACOEHeadStart

<https://www.facebook.com/LACOEHeadStart/>



Contact Information

Pomona Unified Child Development
Early Head Start and Head Start
1460 E. Holt Ave. Suite 174 Pomona, CA 91767
Office Phone Number:
(909) 397-4740

Leslie Lopez, Disabilities Coordinator
Leslie.L.Lopez@pomona.k12.ca.us

Armando Montoya, Disabilities Coordinator
Armando.Montoya@pomona.k12.ca.us

For more information on our programs, please visit:
<https://childdev.pusd.org/apps/pages/ContactUs>



@ChildDevPUSD

<https://www.twitter.com/ChildDevPUSD>



@ChildDevPUSD

<https://www.facebook.com/ChildDevPUSD>



Thank you.

