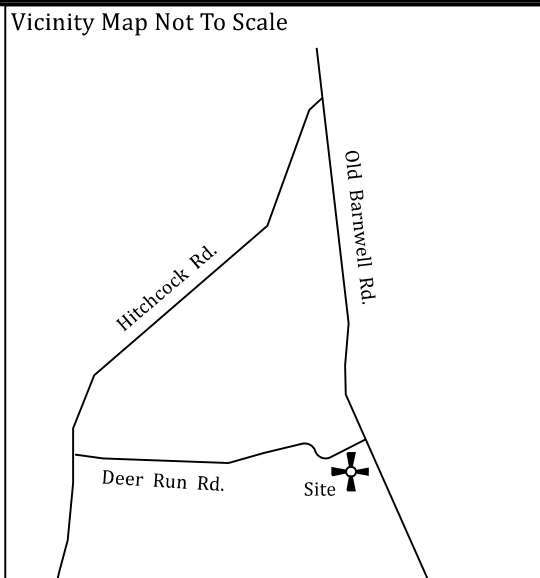


PB 60/700

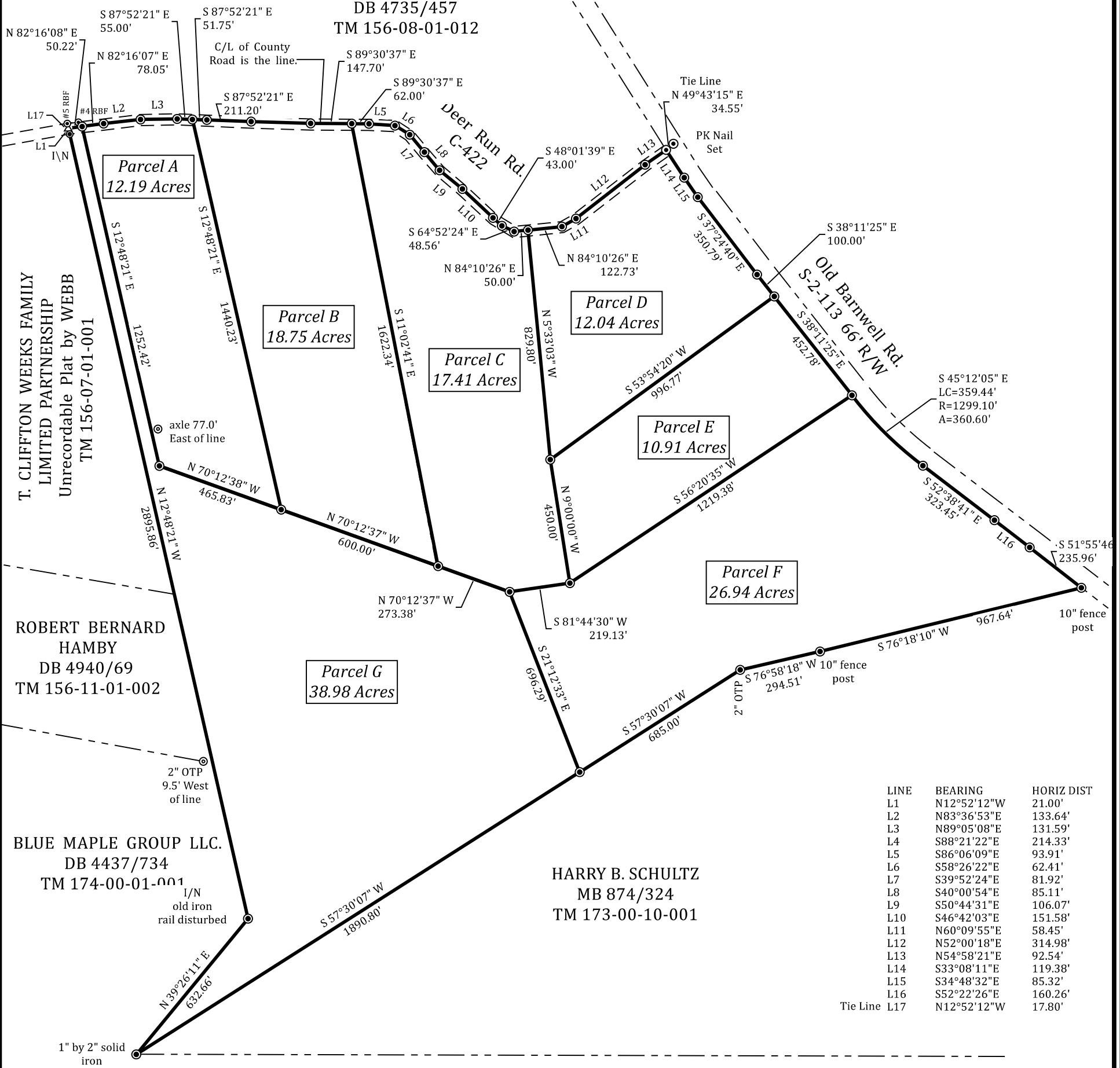


GRAPHIC SCALE- FEET

LEGEND

- I/N = #5 Rebar set with cap
- RBF = Rebar Found
- MFP = Metal fence post found
- OTP= Open top pipe found
- CTP= Crimped pipe found
- CM= Concrete monument found
- N&C= Nail and cap
- △ = Computed point not set
- = Power pole

RICKY THOMAS Etal
DB 4735/457
TM 156-08-01-012



T. CLIFTON WEEKS FAMILY
LIMITED PARTNERSHIP
Unrecordable Plat by WEBB
TM 156-07-01-001

ROBERT BERNARD
HAMBY
DB 4940/69
TM 156-11-01-002

BLUE MAPLE GROUP LLC.
DB 4437/734
TM 174-00-01-001

HARRY B. SCHULTZ
MB 874/324
TM 173-00-10-001

LINE	BEARING	HORIZ DIST
L1	N12°52'12"W	21.00'
L2	N83°36'53"E	133.64'
L3	N89°05'08"E	131.59'
L4	S88°21'22"E	214.33'
L5	S86°06'09"E	93.91'
L6	S58°26'22"E	62.41'
L7	S39°52'24"E	81.92'
L8	S40°00'54"E	85.11'
L9	S50°44'31"E	106.07'
L10	S46°42'03"E	151.58'
L11	N60°09'55"E	58.45'
L12	N52°00'18"E	314.98'
L13	N54°58'21"E	92.54'
L14	S33°08'11"E	119.38'
L15	S34°48'32"E	85.32'
L16	S52°22'26"E	160.26'
Tie Line L17	N12°52'12"W	17.80'

Preliminary Layout
QUILL INVESTMENTS LLC

DATE 19 MAY 2022
SCALE 1" = 400 FEET
COUNTY AIKEN
STATE S. C.
TAX MAP# 156-12-01-001

PREPARED BY
YONCE LAND SURVEYING LLC
AUTREY H. YONCE PLS 19409
PO BOX 277
JOHNSTON, SC 29832
TELEPHONE (803)-275-2264

REFERENCES: PB 60/700 & an unrecorded plat
by WEBB for LAFFAGE W. KITCHINGS