

SEQUIRE[®]

Go with the flow.



Secure Embolics

REDUCES NONTARGET EMBOLIZATION

Safe warning prior to embolics reflux
.....
Allows distal and super selective treatment



Improve Embolization

ALLOWS INCREASED AND TARGETED DELIVERY OF EMBOLIC MATERIAL

Does not cause artery spasm³
.....
Maintains normal blood flow



No learning Curve

NO MOVING PARTS AND NO ACTIVATION REQUIRED

No compromise on microcatheter performance & delivery
.....
Same embolization endpoint

Guerbet |

SEQUIRE[®] is registered trademark of Guerbet Group or its affiliates.

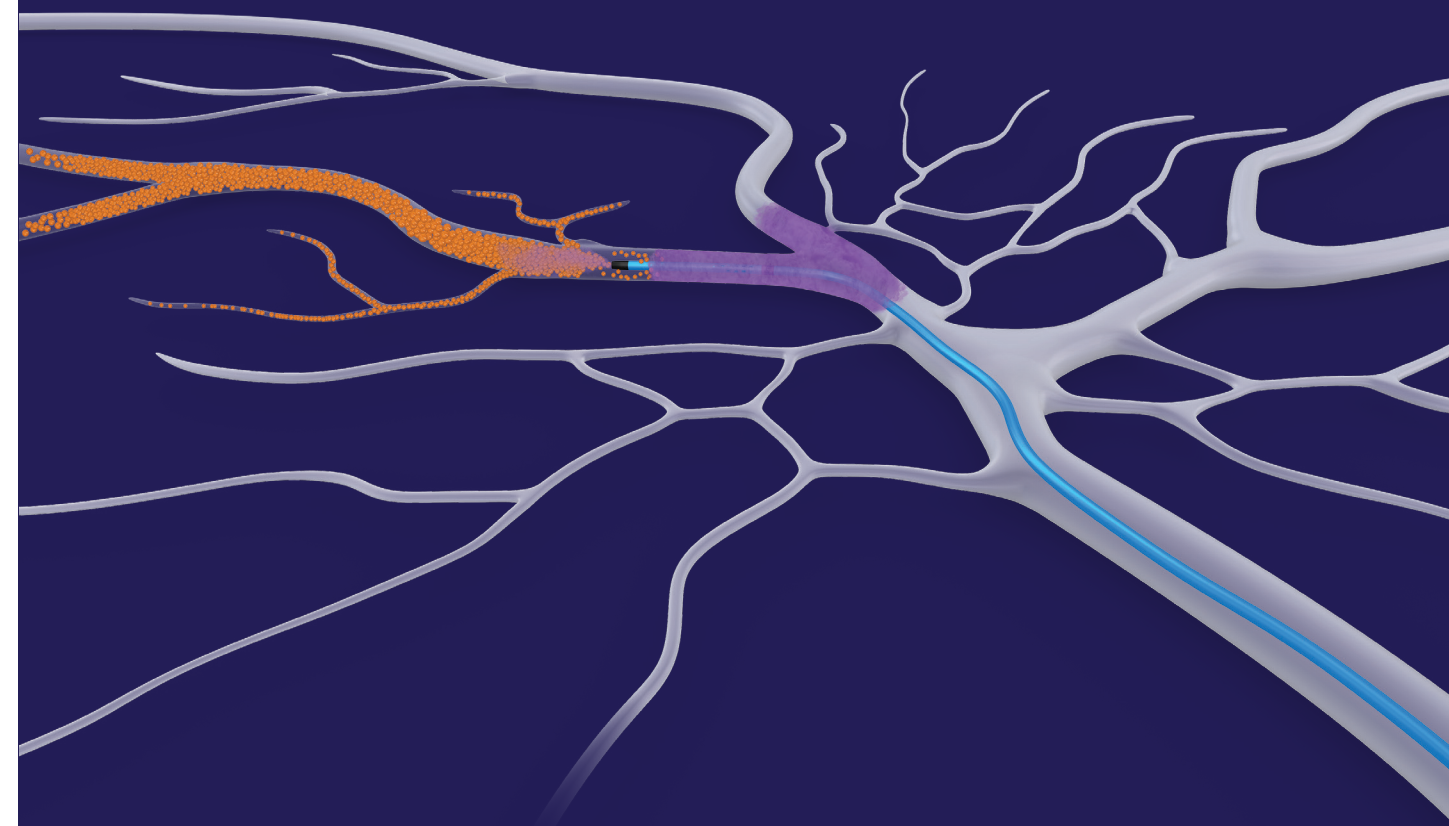
CAUTION: The law restricts these devices to sale by or on the order of a physician. Indications, contraindications, warnings and instructions for use can be found in the product labelling supplied with each device. Information for the use only in countries with applicable health authority product registrations. Material not intended for use in France.

Illustrations for information purposes – not indicative of actual size or clinical outcome.

P19 007 SEQ - January 2019 - Photo: Guerbet - PeartCom

SEQUIRE[®]
Reflux Control Microcatheter

Deliver more¹. Reduce the risk of nontarget embolization^{2,3}.

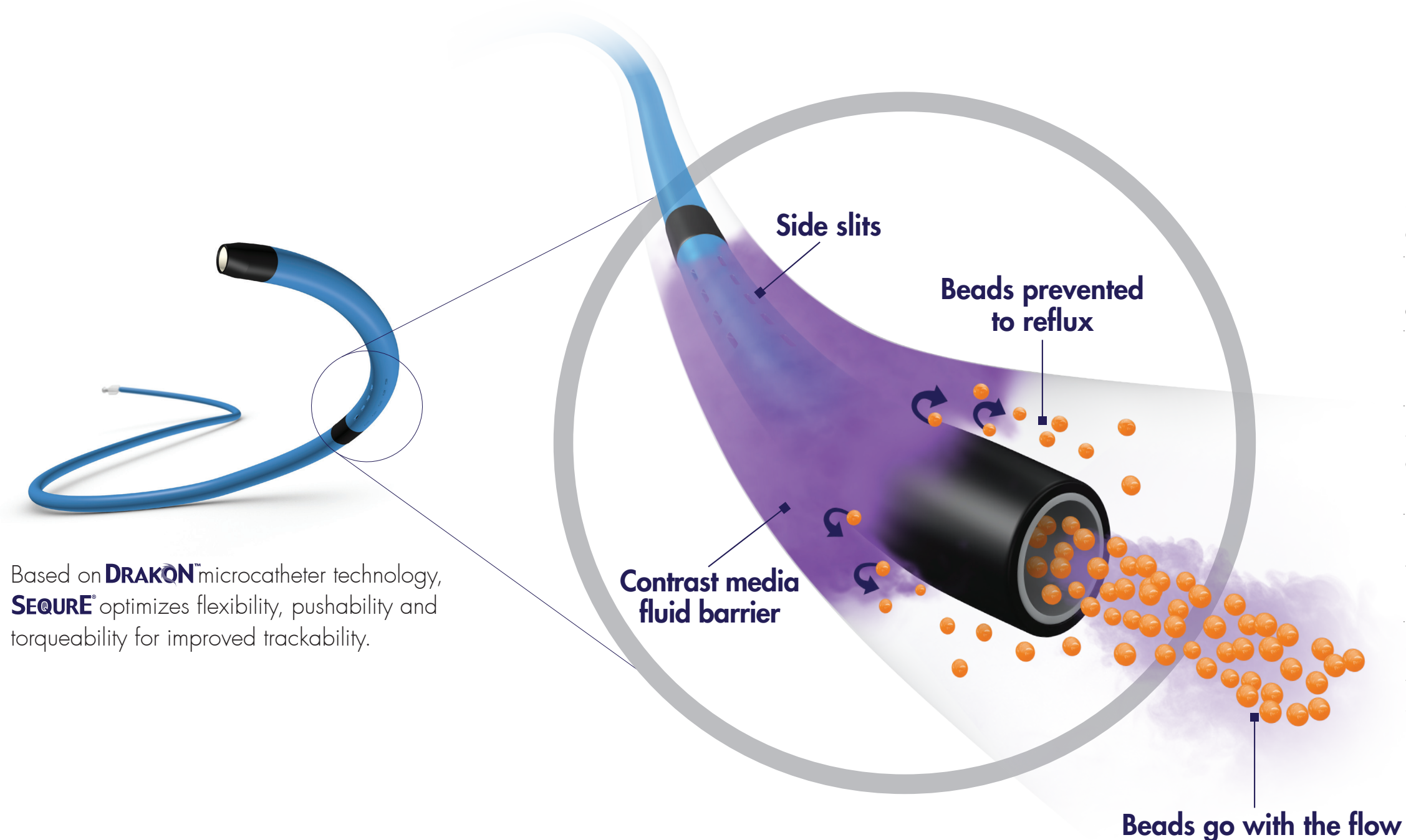


The only reflux control microcatheter enabling flow directed embolization

Guerbet |

Contrast for Life

SEQUIRE® - Innovative reflux control microcatheter



Based on **DRAKON™** microcatheter technology, **SEQUIRE®** optimizes flexibility, pushability and torqueability for improved trackability.

Unique reflux control tip:

Specifically designed tip using flow dynamics principles.

Radially filtered contrast media creates a fluid barrier around the microcatheter

Reduces microspheres reflux and associated nontarget embolization

Side slits (<70µm size) allow outflow of contrast media without passage of microspheres

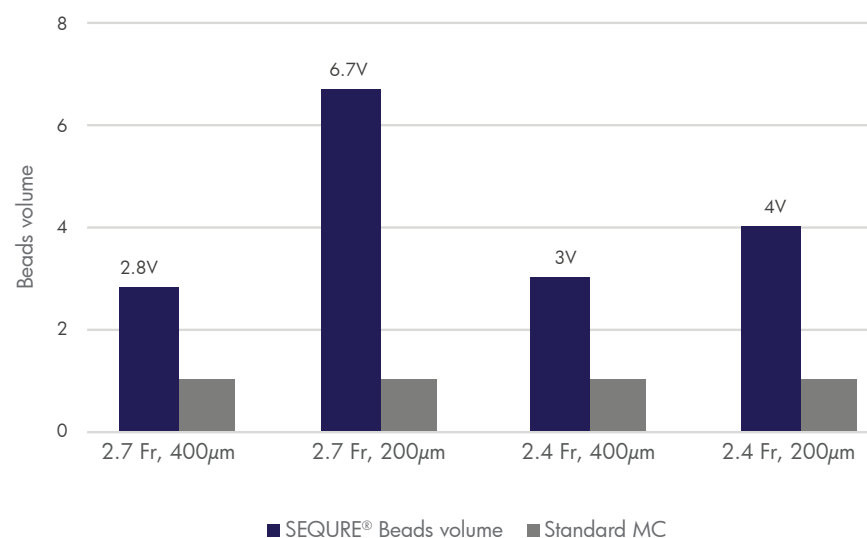
2 RO markers: Distal marker enhances tip visualization. Proximal marker enables precise positioning in the target vessels

Side slits specifically configured for each size of microcatheter eliminating vessel size limitation

Contrast Media Fluid Barrier to reduce reflux of embolic material

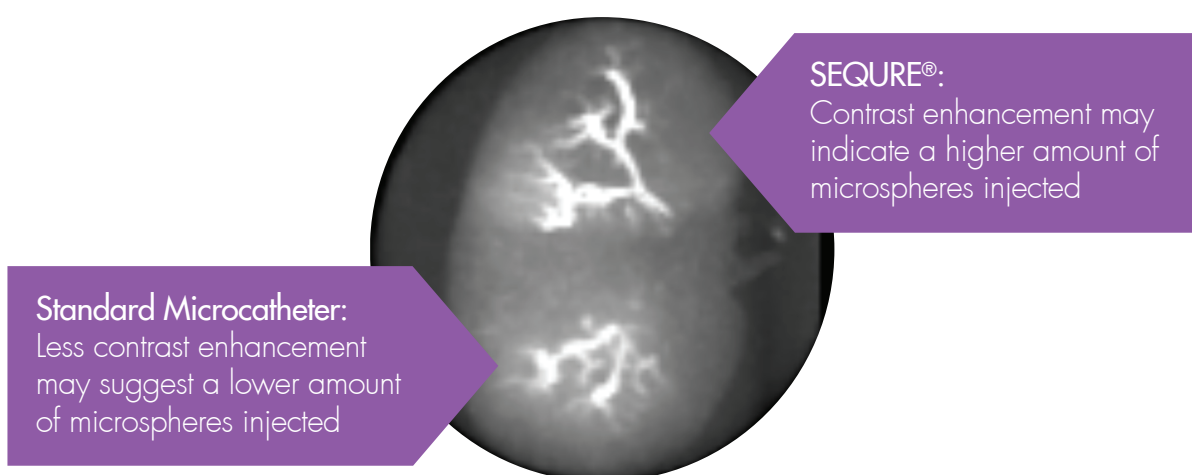
Enhancing embolization

Increased Microspheres delivery



SEQUIRE® delivers on average 3 times more embolic material to the target vessel

Right kidney embolization in pig model using visible microspheres: CT scan one week post procedure



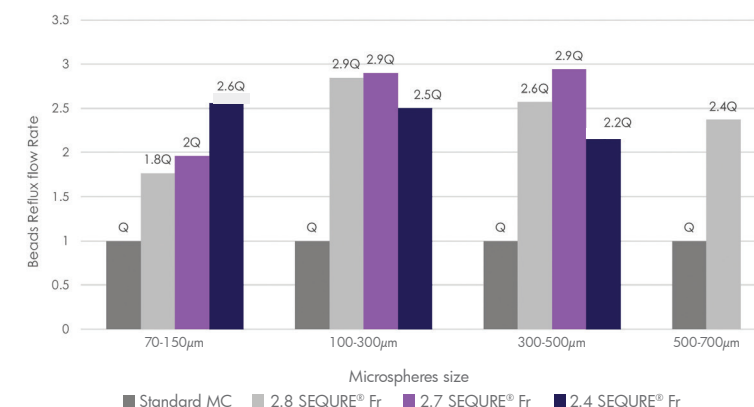
Deliver more

Securing embolization

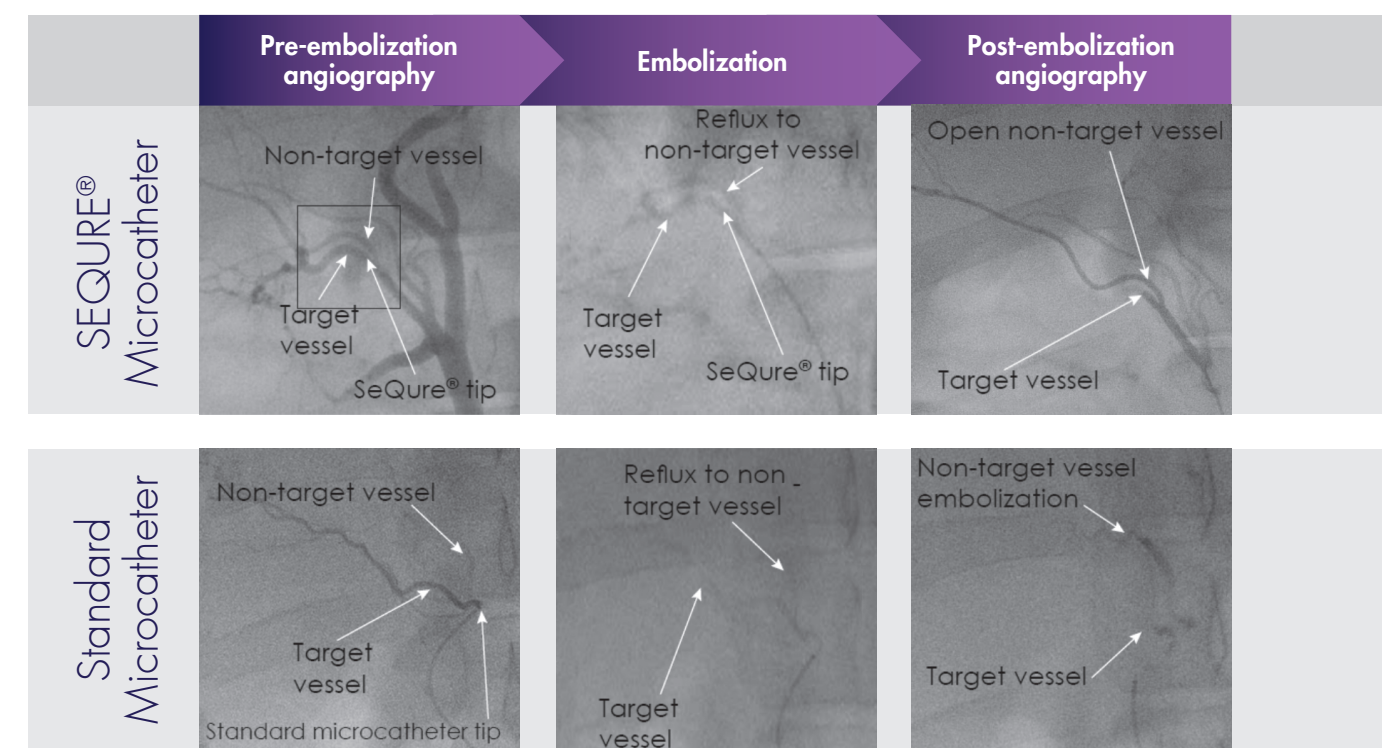
Compared with standard microcatheters, SEQUIRE® enables higher injection rates without microspheres reflux:

- Improves potentially packing and distribution of microspheres
- Increases potentially quantity of embolic material to the target vessel

Occurrence of microspheres reflux



Injection flow rate is at least 80% higher without embolic reflux to non target vessel

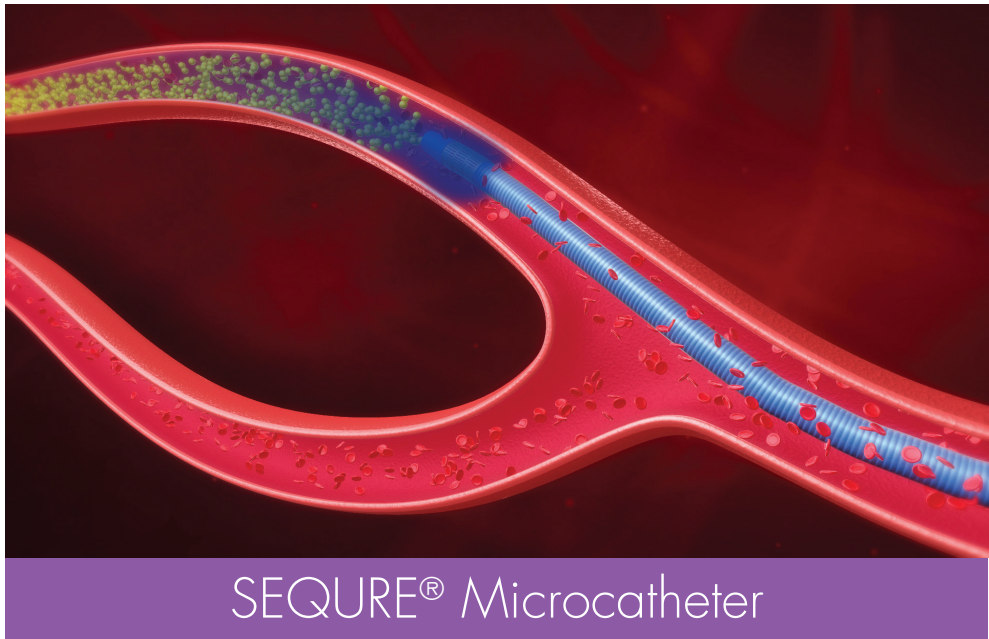


Identical embolization techniques were used for both test and reference microcatheters³

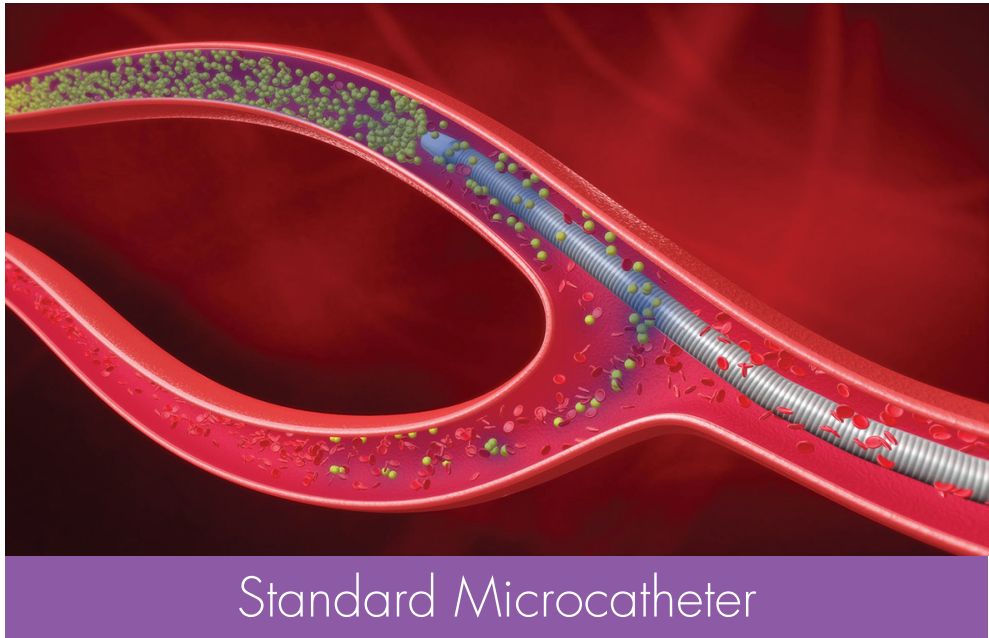
Reduce the risk of nontarget embolization

Seeing the warning signs

SEQURE® provides early indications on vessel flow dynamic changes and embolization endpoint.



Flow directed embolization with controlled reflux at the tip of SEQURE® catheter



Flow directed embolization with contrast & microspheres reflux at the tip of standard catheter

Flow directed embolization. Same radiological endpoint.

SEQURE® Compatibilities

Attribute				Specification					
Microcatheter OD (Proximal/Distal)	2.9/2.4 Fr (0.97/0.8 mm)			2.9/2.7 Fr (0.97/0.9 mm)			3.0/2.8 Fr (1.00/0.93 mm)		
Catheter Inner Diameter	0.022" (0.56 mm)			0.025" (0.64 mm)			0.027" (0.69 mm)		
Functional Length	105 cm	130 cm	150 cm	105 cm	130 cm	150 cm	105 cm	130 cm	150 cm
Maximal Compatible Guidewire OD	0.018" (0.46 mm)			0.021" (0.53 mm)			0.021" (0.53 mm)		
Recommended Guiding Catheter	Min. 0.038" (0.97 mm) guidewire compatible								
Compatible Embolic Microspheres OD	70-500 μm			70-500 μm			70-700 μm		
Compatible Embolic Coil Size	0.018"			0.018"			0.018"		

Specification & Ordering information

PRODUCT REFERENCE	ORDER NUMBER	CATHETER OD (F/MM)	FUNCTIONAL LENGTH (CM)	INNER DIAMETER (IN/MM)	RECOMMENDED GUIDEWIRE (IN/MM)	SHAPE
SQ24_MB_105	232864	2.4F (0.8mm)	105	0.022" (0.56mm)	0.018" (0.46 mm)	Straight
SQ24_MB_130	234072	2.4F (0.8mm)	130	0.022" (0.56mm)	0.018" (0.46 mm)	Straight
SQ24_MB_150	234049	2.4F (0.8mm)	150	0.022" (0.56mm)	0.018" (0.46 mm)	Straight
SQ27_MB_105	232881	2.7F (0.9mm)	105	0.025" (0.64mm)	0.021" (0.53mm)	Straight
SQ27_MB_130	232882	2.7F (0.9mm)	130	0.025" (0.64mm)	0.021" (0.53mm)	Straight
SQ27_MB_150	234052	2.7F (0.9mm)	150	0.025" (0.64mm)	0.021" (0.53mm)	Straight
SQ28_LB_105	232887	2.8F (0.93mm)	105	0.027" (0.69mm)	0.021" (0.53mm)	Straight
SQ28_LB_130	234054	2.8F (0.93mm)	130	0.027" (0.69mm)	0.021" (0.53mm)	Straight
SQ28_LB_150	234055	2.8F (0.93mm)	150	0.027" (0.69mm)	0.021" (0.53mm)	Straight

Data-on-file

1. Beads accumulation reports DR-1800178 & TR-02601
2. Vessel Flow Dynamic Indication (Beads Reflux) Bench Test report TR-002
3. Usability, Safety and Efficacy of a Novel Microcatheter for Reducing Non-Target Embolization. Michael Tal et al. WCIO 2018 Poster. Animal study
4. DR-1800178 report & TR-002 Vessel Flow Dynamic Indication Bench Test