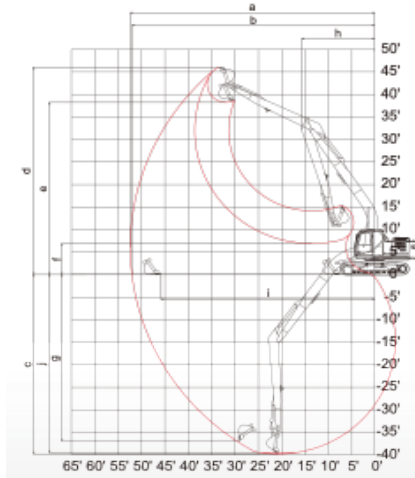


John Deere 240D Long Reach Excavator



Specifications	
Overall length	47' 8"
Overall Height	10' 4"
Overall Width	11' 1"
Shoe Width	31.5"
Net Horsepower	177hp
Operating Weight	54,624 lb.
Lift capacity	16,877 lb.



Working Ranges	
Long Reach Attachment	60'
Boom	33' 11"
Arm	27' 1"
a. Max digging reach	60' 10"
b. Max digging reach at ground level	60' 6"
c. Max digging depth	48' 4"
d. Max digging height	47' 9"
e. Max dump clearance	40' 5"
f. Minimum dump clearance	5' 2"
g. Max vertical wall digging depth	42' 8"
h. Minimum swing radius	18' 4"
i. Horizontal digging stroke at ground level	48' 5"
j. Digging for 8' flat bottom	47' 10"

Late Model – With a 60' Reach!
Trimble Earthworks 3D Grade Control Ready
 Cab Kit and Antennas Available For Additional Cost

