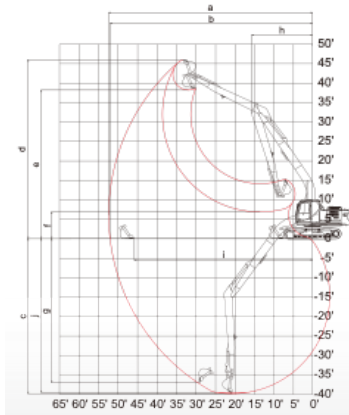


Kobelco SK260 Long Reach Excavator



| Main Specifications | |
|---------------------|--------|
| Overall length | 47' 8" |
| Overall Height | 10' 4" |
| Overall Width | 11' 1" |
| Shoe Width | 31.5" |



| Working Ranges | |
|--|---------|
| Long Reach Attachment | 60' |
| Boom | 33' 11" |
| Arm | 27' 1" |
| a. Max digging reach | 60' 10" |
| b. Max digging reach at ground level | 60' 6" |
| c. Max digging depth | 48' 4" |
| d. Max digging height | 47' 9" |
| e. Max dump clearance | 40' 5" |
| f. Minimum dump clearance | 5' 2" |
| g. Max vertical wall digging depth | 42' 8" |
| h. Minimum swing radius | 18' 4" |
| i. Horizontal digging stroke at ground level | 48' 5" |
| j. Digging for 8' flat bottom | 47' 10" |

With a 60' Reach

