

A YEAR IN REVIEW

Executive Director's Note

Again, here I sit at my desk and think about this past year and all that it held for us. Every year that passes so much changes. The one thing that doesn't change is the amount of happiness and love I feel in my soul when I see our student's smiling faces. If you ask any of the staff her at SLI, those smiles are what keep us going. This past year we celebrated accomplishments for ourselves and our friends, we did new and sometimes hard things, and we had a ton of fun. Sometimes we failed, but we got back up, dusted ourselves off and tried again. But the thing that makes me proudest of our students is that they prove every day that good people still exist. Our students are the best cheerleaders, the best friends, and the best people I have ever had the pleasure of meeting and spending time with. They are who I strive to be like. They see the best in everyone and the in world around them. They encourage, inspire and persevere. They overcome everything that comes at them and keep right on smiling. I think that we can all agree that if everyone, myself included, could be more like them, the world would be a heck of a lot nicer of a place. In our new year coming, I hope we not only survive, but thrive! I hope that we continue to make our dreams a reality. I hope we spend more time with the people we love most and make more memories! Most of all I hope that everyone remembers how loved they are.

- Abby Hinsch, Executive Director



What's New | Welcome Tammy Huhn

We are so excited to share the news that Miss Tammy Huhn has joined our SLI Family as our new program assistant! Miss Tammy is a friend to all and lights up any room she walks into.

Welcome to our Garden Miss Tammy!
We are so happy to have you with us!



Tricia Dittmer Retired!

Over the past 23 years, Trish has been our guide post, our ever constant, our light house guiding us back safely.

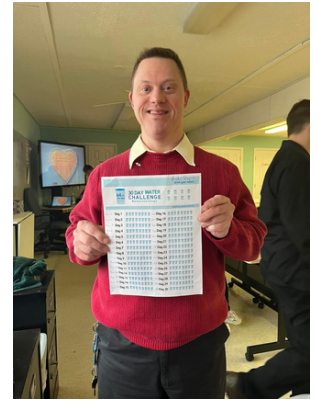
She has loved us and loved SLI with her full heart. Trish has made everyone who comes through the doors feel loved, welcome and special.

We will not be the same without her!



Also this year, **Roger Potratz** has retired from the Social and Learning Board of Directors after 20+ years of dedicated service. Roger was instrumental in making so many amazing changes for Social and Learning, including buying our current building and designing our amazing addition. The care he put into making this building a "home" for us is unmatched. We are forever grateful for Roger and all the wonderful things he did for SLI, and we hope that this new chapter in his life is the best yet! From the very bottom of our hearts Roger, thank you so much for everything.

We didn't know we were making memories; we just knew we were having fun!

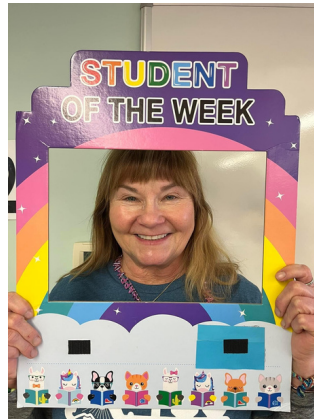


January - Working on our lesson about Sharks, from Michigan City Public Library

February - We celebrated Valentines day with games and some students completed a 30 day water challenge!



March - We celebrated our amazing ladies for National Womens Day. We also celebrated Miss Trish's retirement.



April- We had an inhouse field trip with Yours Truly Bath Co. to paint bath bombs! We also did science experiments to see what happens with the bathbombs when you put them in water!



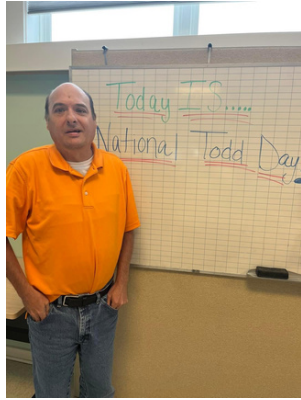
May - We went on a field trip to Dunes Learning Center, we made water color art work and we welcomed Miss Tammy to our SLI family!



June - Every month we celebrate birthdays. In June we celebrated Robin, and Zach F.

2023 Photo Review

July - We did a science experience making super bubbles, the guy did a bowling challenge, and we celebrated National Todd Day!



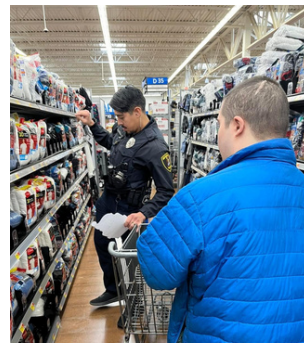
August- We had a paint pouring class and made beautiful art work, and we went to a movie at the Michigan City Library.



September - We went on a field trip to the Michigan City Zoo



October - We did many Halloween Crafts and went to Coulters Pumpkin Patch



November and December - In November we had a disguised Turkey contest, went to Anam Cara to work with the horses, and we were picked for Horizon Give Back Day. In December we celebrated the Holidays with Shop with a Cop and had a surprise visit from the Grinch!

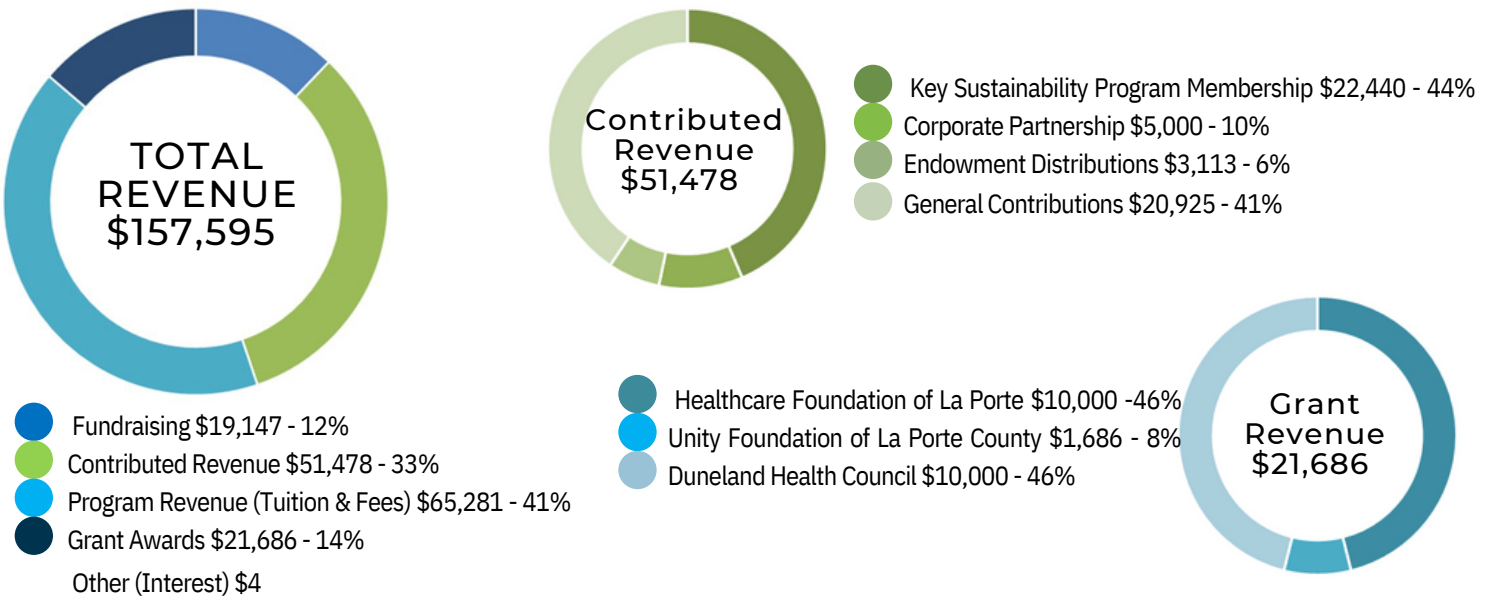
FINANCIALS

Annual Review of Financial Statements completed by
Parkison & Hinton, Inc., PC

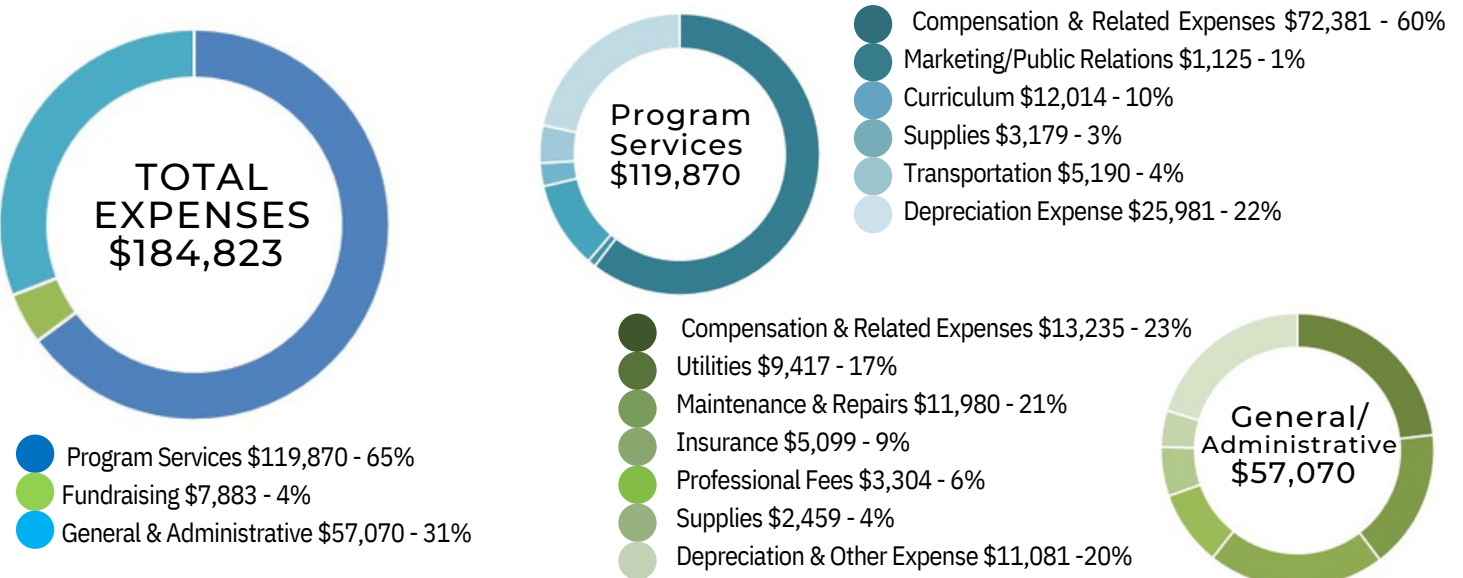
Position Report | Fiscal Year Ending 9.30.2023



Revenue | Fiscal Year Ending 9.30.2023



Expenses | Fiscal Year Ending 9.30.2023



GRANTS

Health & Wellness

We are so fortunate for the support to our health and wellness program. Because of this program the students and staff members learn more about our health, and how to stay well in body and mind through physical fitness and classroom health lessons. At SLI we want our students, staff and SLI family to be happy and healthy! Our Health & Wellness program is made possible thanks to support from **Duneland Health Council** and **Health Foundation of La Porte**.

Duneland Health Council is an independent foundation that was established in 1997 in Indiana. It supports projects or programs that improve the health and general welfare of the greater Michigan City, IN community. Its fields of interest include Community development, Education, Family Services, Healthcare, Clinics/Centers and Human Services. It supports these areas by awarding grants and scholarships primarily in the metropolitan Michigan City, IN area.

Health Foundation of La Porte (HFL) is a nonprofit, independent, private foundation dedicated to empowering our residents to live healthy and well in and around La Porte. HFL envisions partnering with many types of community organizations through thoughtful grantmaking to build a healthier community together. We are committed to supporting health and wellness programs and services to achieve the vision of La Porte becoming one of the top 10 healthiest communities in Indiana. For more information, visit hflaporte.org



Science and Nature Exploration

Thanks to grant funding from **The Unity Foundation of LaPorte County**, students get to work with The Dunes Learning Center to learn about science and nature. What other program can teach you about the different animals, plants, habitats, and different parts of nature not only in our area but all over the USA! This unique program allows students to experiment and have fun while still learning new and interesting things about the amazing world we live in.

Since 1992, **Unity Foundation of La Porte County** has served donors, nonprofits, and local communities. As La Porte County's community foundation, it manages over \$40 million in assets, administers more than 350 charitable funds, and has distributed more than \$22 million through direct grants and scholarships. Unity Foundation's mission is to strengthen La Porte County now and forever by building permanent endowments; providing leadership; offering philanthropic vehicles for everyone; and, being a catalyst for social and economic vitality.



Operational Support



We are beyond grateful to have been granted continued operational support provided by **The Barker Welfare Foundation**! These funds not only help us manage and maintain our facility, they also support many of our program initiatives

The Barker Welfare Foundation provides grants to qualified charitable organizations whose initiative improve the quality of life, with an emphasis on strengthening youth and families and to reflect the philosophy of Catherine B. Hickox, the Founder.

THANK YOU DONORS

**WE SIMPLY COULD NOT DO
WHAT WE DO WITHOUT OUR DONORS!**

Students of the Social & Learning Institute do pay a monthly tuition, yet more than two-thirds of the Institute's annual operating revenue comes in the form of grants, donations, and fundraising. SLI is grateful for the continued support of our dedicated individual donors, community businesses, service organizations and funders who support our mission.

Programs Supported by Grant Funds:



Science & Nature Exploration with Dunes Learning Center | Supported by a grant from **Unity Foundation of La Porte County**
Health & Wellness Program | Supported by a grants from **Duneland Health Council** and **Health Foundation of La Porte**
General Operations | Supported by a grant from **The Barker Welfare Foundation**

Employer Supported & Matching Gifts:

BP Foundation Inc.
Cleveland-Cliffs Inc.

Fundraising Partners:

Allen Street Roasters
Boyd Gaming/Trees of Hope
Chipotle
Fannie May Confections
Full Tilt Arcade
Galveston Steakhouse
Hacienda Mexican Restaurant
Holly's Restaurant
Kabelin Ace Hardware
Leeds Public House
Profitable Solutions
Fundraising
South Bend Chocolate Café

Contributions Received From Community Partners:

Beyond the Beach Salon
Kappa Kappa Kappa,
MC Chapter
Knights of Columbus
Queen of All Saints Council
Michiana Lions Club
Michigan City Firefighters Local 475
Northwest Indiana
Online Auction
St. John's United Church
of Christ Women's Guild



**Gifts received from
Facebook Fundraisers
in 2023 = \$1,320**

**2023 Michigan City
Mayor's Ball:
\$5,746**

**Mayor Perry's
Discretionary Fund
\$1,500**

Annual Raffle Sponsor

Northwest Indiana
Online Auction

Gold
Transparency
2023

Candid.

We're excited to share that our organization has earned a 2023 Gold Seal of Transparency with Candid! Now, you can support our work with trust and confidence by viewing our #NonprofitProfile: <https://www.guidestar.org/profile/35-1403244>

WAYS TO GIVE

Key Sustainability Program

We invite you to become a member of our community through our Key Sustainability Program. Individuals and organizations who participate in this program are the backbone of our organization and play key roles in shaping our future. By becoming a member, you're providing adults with intellectual and developmental disabilities a sense of community and access to life-long learning opportunities.

Visit socialandlearning.org/giving for full program details or contact SLI by email contact@socialandlearning.org or phone 219-879-2200. A membership contribution form is enclosed.

Visit socialandlearning.org/giving to explore secure online giving options

- One Time Donation**
- Support Monthly**
- Spread the word**
- Use Our Code**



WANT TO STAY IN TOUCH?

Please visit www.SocialandLearning.org and sign up for our mailing list at the bottom of the home page.