





Our Mission & Vision

At Alevators, we are driven by a mission to deliver safe, innovative, and efficient vertical mobility solutions that enhance urban life and exceed customer expectations. Our vision is to become a globally trusted elevator brand, recognized for our cutting-edge technology, uncompromising quality, and personalized solutions that move people and businesses forward – seamlessly and safely.

who we are

Alevator.LLC proudly established in Dubai, was founded with a focused vision: to deliver high-standard, customer-centric, and cost-effective elevator solutions that redefine reliability and performance.

Backed by a leadership team with over 30 years of global experience, having collaborated with top multinational brands, Sandfield brings unmatched industry expertise and insight into every project we undertake.

With a robust international supply network across Turkey, China, and India, we ensure top-tier quality, timely delivery, and tailor-made vertical transportation solutions to meet diverse architectural demands.

Our operations strictly follow international best practices and are proudly ISO 9005 certified, reflecting our unwavering commitment to safety, innovation, and exceptional service.

Today, Sandfield stands as a truly multinational brand, with operations spanning across India, UAE, Qatar, Tanzania, Algeria, and Kazakhstan, delivering world-class elevator and escalator solutions to clients across residential, commercial, and industrial sectors – all united by one goal: Excellence that elevates.





Meet the Alevator Team

At Alevators, our strength lies in our people. We are a passionate, skilled, and dedicated team of professionals who believe in delivering excellence every time. From design engineers to field technicians, every member of our team is handpicked for their commitment to quality and customer satisfaction.

We don't just build elevators – we elevate experiences.

Driven by Discipline, Defined by Excellence

Discipline is at the heart of everything we do. Whether it's our punctual installations, routine maintenance checks, or our safety-first approach on-site, we follow strict protocols that ensure every elevator we touch operates smoothly and reliably.

Powered by Innovation

We use cutting-edge technology and industry-leading components to offer advanced elevator solutions for residential, commercial, and industrial needs. Our elevators are built for performance, safety, and smart integration – always a step ahead of the curve.

Continuous Learning, Consistent Quality

Our team regularly undergoes technical training and certification programs to stay updated with the latest innovations, safety standards, and installation techniques. This ensures every Sandfield elevator reflects modern engineering and timeless reliability.

Advanced System With Top Brand Technology

At Alevators, we integrate cutting-edge technologies from the world's leading elevator hubs. Our products are a fusion of global expertise, combining the best features and innovations from each of these countries to deliver a refined, high-performance elevator.



Germany – Renowned for precision engineering and unmatched quality



Japan – Leaders in automation, safety systems, and smart control technology



India – Customization, flexibility, and cost-effective engineering solutions



China – Rapid innovation and scalable manufacturing excellence

Germany Permanent Magnet Gearless Traction Machine

High-precision permanent magnetic synchronous positioning technology combined with automated centralized winding motor, more efficient, low energy consumption, real green energy saving. VVVF inverter control system RoHS-compliant, lower operating noise, high harmonics with suppressed power supply, long design life.



Energy feedback technology

Based on the high energy-saving energy feedback technology controlled by dual PWM, the renewable green energy and non-polluting energy consumption by the energy resistance can be fed back to other electrical equipment, which is more than 30% energy saving on average compared to ordinary VVVF elevators. Fully meet the relevant national power quality standards.



Japan Technology Door

The use of digital VVVF variable voltage inverter drive, high-performance space vector control technology, with 32-bit digital signal controller, so that elevator operation more stable and efficient, safe and reliable.



Stable intellectual control system

Adopt high integration, double 32-bit S intelligent full-computer control system, make elevator data processing faster, and the classic combination of a dedicated full-digital vector IP inverter, through the full closed-loop speed feedback adjustment, so that the elevator operation is extremely long and smooth. And comfortable operation



Our Home Elevators

– Designed for Comfort, Built for Life

We believe your home deserves the same level of safety, convenience, and elegance as any modern high-rise. Our home elevators are specially crafted to offer seamless vertical mobility—without compromising on style or space.

🏠 Z 100 Home Elevators – Designed for Comfort, Built for Life

At Sandfield, we believe your home deserves the same level of safety, convenience, and elegance as any modern high-rise. Our home elevators are specially crafted to offer seamless vertical mobility—without compromising on style or space.

🔄 Easy to Use

Simple, intuitive controls and smooth operation ensure that anyone—children, adults, or elderly—can operate our elevators with ease and confidence.

🛡️ Safe & Secure

Equipped with state-of-the-art safety features like emergency stop buttons, battery backups, door interlocks, and anti-fall mechanisms, our elevators prioritize your family's safety above all.

♿ Effortless Accessibility

Our elevators remove barriers in your home, enabling smooth and dignified movement for the elderly, individuals with mobility needs, or anyone who simply prefers comfort and ease over stairs.

🎨 Customized to Your Home

With flexible options in cabin size, finishes, lighting, and doors, each elevator is tailored to fit your home's layout and interior style perfectly.

🔧 Space-Saving & Budget-Friendly

Smart engineering allows installation in compact spaces with minimal structural changes. Plus, our lifts are energy-efficient and low maintenance, making them a cost-effective long-term solution.



TRACTION TYPE HOME ELEVATOR

MACHINE ROOM LESS (MRL)
SAVES BUILDING COSTS

- **No need for traditional machine rooms:** Saves construction costs.
- **Backpack and gantry elevator structures:** Can be used according to the door opening requirements of the house structure.
- **VVVF drive technology:** Microcomputer board control for smooth and comfortable operation.
- **Special traction machine frame:** Fixed on the guide rail, so the building doesn't bear any extra force.
- **Uses 220V single-phase power supply:** Regular household electricity, no need to apply for industrial power supply.
- **Automatic dedicated door machine:** Frequency conversion energy-saving, safe, and reliable.
- **UPS (backup power supply):** Can be used for emergency evacuation in case of power outage.
- **Total rated power of 1.5KW:** Including a 1.1KW drive system, less power than a microwave oven, 80% less than that of commercial small elevators.



STEEL BELT TYPE HOME ELEVATOR

DURABLE, ECO-FRIENDLY &
ENERGY-EFFICIENT STEEL BELT

Equipped with multiple internationally leading technologies such as high-efficiency and energy-saving hosts, variable frequency door machines, and safe and reliable light curtain door protection devices, the development of vertical transportation elevators has entered a

STEEL BELT VS. STEEL ROPE

Polyurethane material layer, no lubrication required The lifespan is 2-3 times that of traditional steel wire ropes More flexible, increasing the contact area with the driving wheel, more energy-efficient, and more efficient

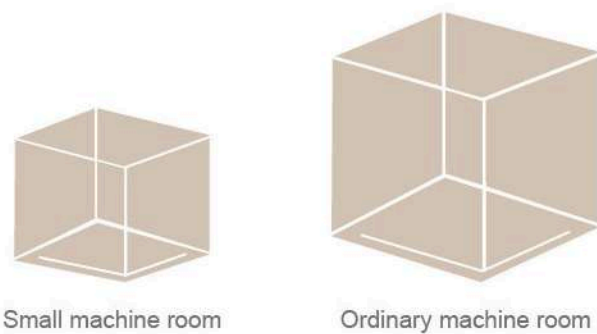


MODEL : S10

Small Machine Room Passenger Elevator (Concrete Shaft)

Seamless, perfect Space Docking

Compared to traditional elevator designs with large machine rooms, the SF10 Small machine room passenger elevator offers a reasonable layout. This allows for the same size elevator room and a well-saved space, increasing the possibility of room repurposing and reducing construction costs. At the same time, it enhances the building's appearance.



The advantages of passenger elevators with small machine rooms include:

- Reduced machine room height by 250mm
- Delicate and light design
- Saved building space



MODEL : S10 Advanced

Machine Room Less Passenger Elevator (Concrete Shaft)

Seamless, perfect Space Docking. A constraint to create opportunity.

The S10 Advanced Series Machine Roomless Passenger Elevator features a compact and flexible permanent magnet synchronous gearless traction machine. This design ensures that the elevator room area remains the same as the lift shaft, creating a green channel that allows for a flexible layout. This harmonious integration with the building's simple and elegant appearance is achieved through ingenious design.

Ingenious Design , To Create A Smart Space

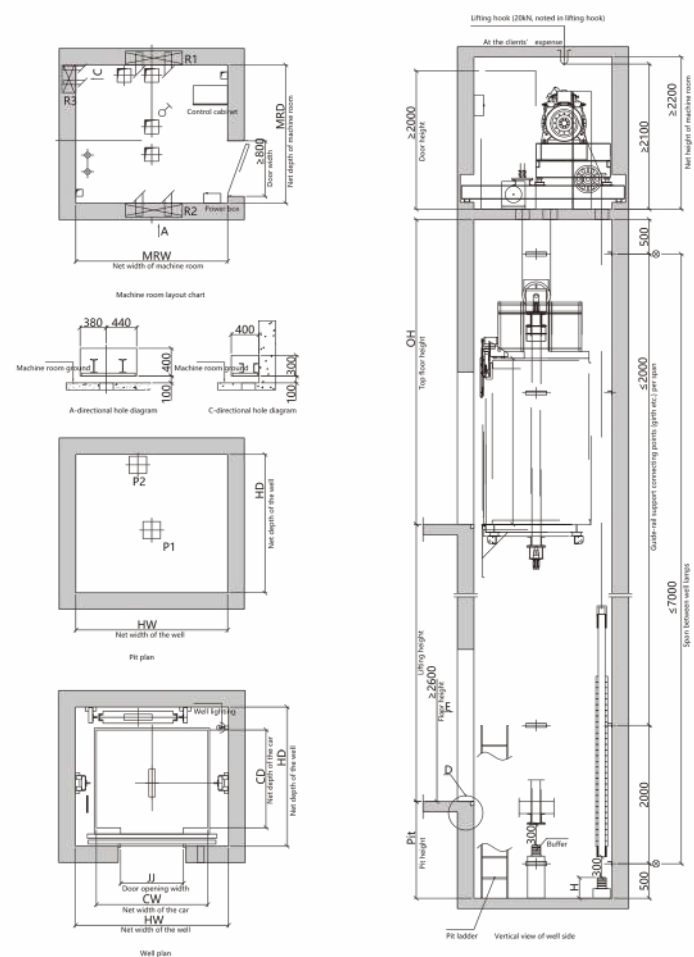
The elevator's moving control cabinet, traction machine, and speed governor are housed in the original engine room, saving construction area. This operation scheme allows the elevator to still be safe to operate without a machine room, adding colour to the city landscape.

Easy To Maintainence Reducing The Trouble About Future

Maintenance is easy, reducing the likelihood of future trouble. The upper host machine arrangement shortens the connection line between the control cabinet and host machine, introducing new technologies and reducing wiring installation.

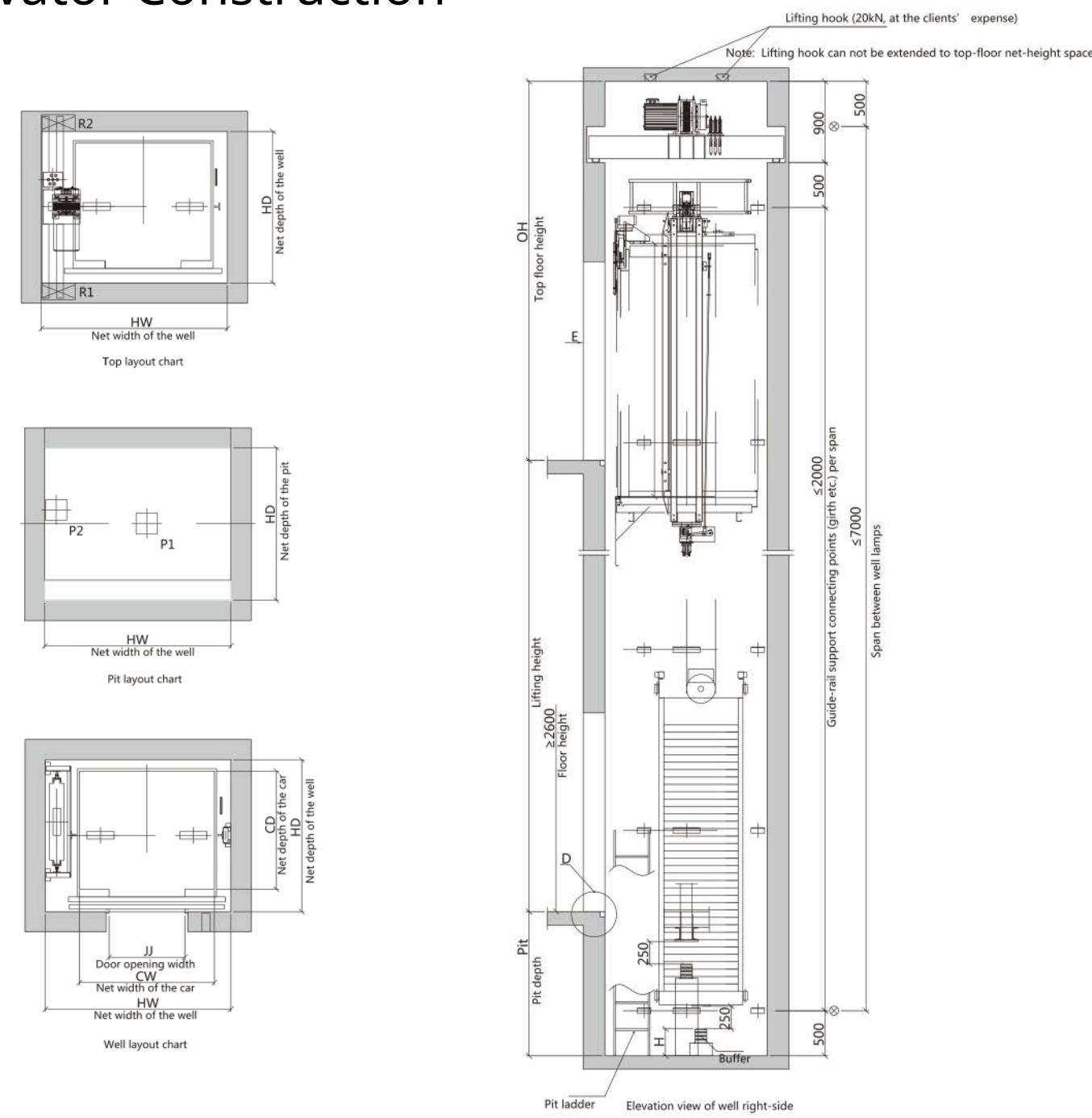


Small Machine Room Passenger Elevator Construction



Model	Load KG	Passenger NO.	speed m/s	(mm) Car specification CWxCD	(mm) Door opening size JJxOPH	(mm) Well size HWxHD	(mm) Machine room size MRWxMRD	(mm) Pit depth	(mm) Top floor height OH	Power	Acting force				
											R1	R2	R3	P1	P2
450/1.0	450	6	1	1100x1100	700x2100	1700x1700	1700x1700	1400	4500	3.2	28800	17200	1900	44000	35000
450/1.5			1.5					1500	4600	4.9					
630/1.0	630	8	1	1400x1100	800x2100	2000x1700	2000x1700	1400	4500	4.3	35200	21800	4300	58000	45600
630/1.5			1.5					1500	4600	6.4					
630/1.75			1.75					1600	4700	7.5					
800/1.0	800	10	1	1400x1350	800x2100	2000x2000	2000x2000	1400	4500	5.4	44800	27400	5400	72000	56000
800/1.5			1.5					1500	4600	8.1					
800/1.75			1.75					1600	4700	9.4					
1000/1.0	1000	13	1	1600x1400	900x2100	2200x2000	2200x2000	1400	4500	6.7	53400	32200	6000	88000	68000
1000/1.5			1.5					1500	4600	10					
1000/1.75			1.75					1600	4700	11.7					
1150/1.0	1150	15	1	1900x1400	1000x2100	2500x2100	2500x2100	1400	4600	7.8	55600	36300	7800	98000	75000
1150/1.5			1.5					1500	4700	11.7					
1150/1.75			1.75					1600	4800	13.6					
1250/1.0	1250	16	1	1900x1500	1100x2100	2500x2200	2500x2200	1400	4600	8.5	60400	39400	8500	106000	81000
1250/1.5			1.5					1500	4700	12.7					
1250/1.75			1.75					1600	4800	14.9					
1350/1.0	1350	18	1	1900x1600	1100x2100	2500x2300	2500x2300	1400	4600	9.2	67200	43400	8700	114000	87000
1350/1.5			1.5					1500	4700	13.8					
1350/1.75			1.75					1600	4800	16.1					
1600/1.0	1600	21	1	2000x1750	1200x2100	2600x2450	2600x2450	1400	4600	11	73600	47600	9600	128000	96000
1600/1.5			1.5					1500	4700	16.6					
1600/1.75			1.75					1600	4800	19.4					

Machine Roomless Passenger Elevator Construction



Model	Load KG	Passenger NO.	speed m/s	(mm) Car specification CWxCD	(mm) Door opening size JJxOPH	(mm) Well size HWxHD	(mm) Pit depth Pit	(mm) Top floor height OH	Power	Acting force			
				R1	R2	P1	P2						
630/1.0	630	8	1	1200x1350	800x2100	1950x1750	1500	4400	4.2	19800	26400	58000	45600
630/1.5			1.5				1600	4500	6.4				
630/1.75			1.75				1700	4600	7.4				
800/1.0	800	10	1	1400x1350	800x2100	2050x1750	1500	4600	5.4	25700	27100	72800	56000
800/1.5			1.5				1600	4700	8.1				
800/1.75			1.75				1700	4800	9.4				
1000/1.0	1000	13	1	1600x1400	900x2100	2250x1800	1500	4600	6.7	27400	39600	88000	68000
1000/1.5			1.5				1600	4700	10.1				
1000/1.75			1.75				1700	4800	11.8				

Passenger Cabin Decor



SAN-101

Ceiling: Hairline stainless steel, acrylic lighting, tube light
Rear wall: Hairline stainless steel
Side wall: Hairline stainless steel
Floor: PVC/Marble



SAN-102

Ceiling: Hairline stainless steel, acrylic lighting, tube light
Rear wall: Mirror etched stainless steel, hairline stainless steel
Side wall: Hairline stainless steel
Floor: PVC/Marble



SAN-103

Ceiling: Mirror stainless steel, acrylic lighting, tube light
Rear wall: Mirror etched stainless steel, mirror stainless steel
Side wall: Mirror etched stainless steel, mirror stainless steel
Floor: PVC/Marble



SAN-104

Ceiling: Hairline stainless steel, tube light
Rear wall: Hairline stainless steel
Side wall: Hairline stainless steel
Floor: PVC/Marble



SAN-105

Ceiling: Hairline stainless steel, acrylic lighting
Rear wall: Mirror etched stainless steel, hairline stainless steel
Side Wall: Hairline stainless steel, mirror stainless steel
Floor: PVC/Marble



SAN-106

Ceiling: Mirror stainless steel, acrylic lighting, tube light
Rear wall: Mirror etched stainless steel, hairline stainless steel
Side wall: Mirror etched stainless steel, hairline stainless steel
Floor: PVC/Marble



Passenger Cabin Decor



SAN-107

Ceiling: Mirror stainless steel, acrylic lighting, tube light
Rear wall: Mirror etched stainless steel, mirror stainless steel
Side wall: Mirror stainless steel, hairline stainless steel
Floor: PVC/Marble



SAN-108

Ceiling: Mirror stainless steel, hairline stainless steel, acrylic lighting, tube light
Rear wall: Mirror etched stainless steel, mirror stainless steel
Side wall: Mirror etched stainless steel, mirror stainless steel
Floor: PVC/Marble



SAN-109

Ceiling: Rose gold mirror stainless steel, acrylic lighting, tube light
Rear wall: Rose gold mirror etched stainless steel, Rose gold mirror stainless steel
Side Wall: Rose gold mirror etched stainless steel, rose gold mirror stainless steel
Floor: PVC/Marble



SAN-110

Ceiling: Rose gold mirror stainless steel, acrylic lighting
Rear wall: Rose gold mirror stainless steel
Side wall: Mirror etched stainless steel, mirror stainless steel
Floor: PVC/Marble



SAN-111

Ceiling: Mirror stainless steel, acrylic lighting, tube light
Rear wall: Mirror etched stainless steel, gray titanium hairline stainless steel
Side Wall: Grey titanium hairline stainless steel, mirror stainless steel
Floor: PVC/Marble



SAN-112

Ceiling: Mirror stainless steel, acrylic lighting, tube light
Rear wall: Mirror etched stainless steel, hairline stainless steel
Side wall: Mirror etched stainless steel, hairline stainless steel
Floor: PVC/Marble



SAN-113

Ceiling: Rose gold mirror stainless steel, tube light, light strip
Rear wall: Rose gold mirror etched stainless steel, rose gold patterned stainless steel
Side Wall: Rose gold mirror stainless steel, rose gold pattern stainless steel
Floor: PVC/Marble



SAN-114

Ceiling: Rose gold mirror stainless steel, acrylic lighting
Rear wall: Rose gold mirror etched stainless steel, Rose gold mirror stainless steel
Side Wall: Rose gold mirror stainless steel, rose gold pattern stainless steel
Floor: PVC/Marble

Passenger Cabin Decor



SAN-115

Ceiling: Rose gold patterned stainless steel, acrylic lighting
Rear wall: Mirror etched stainless steel, rose gold patterned stainless steel
Side wall: Mirror stainless steel, rose gold patterned stainless steel
Floor: PVC/Marble



SAN-115

Ceiling: Hairline stainless steel, acrylic lighting
Rear wall: Leather hard package, mirror stainless steel inlay, antique bronze hairline stainless steel
Side wall: Mirror stainless steel, antique bronze hairline stainless steel
Floor: PVC/Marble



SAN-116

Ceiling: Mirror stainless steel, black titanium mirror stainless steel, light strip
Rear wall: Hairline stainless steel, black titanium mirror stainless steel, light strip
Side Wall: Hairline stainless steel, black titanium mirror stainless steel
Floor: PVC/Marble



SAN-117

Ceiling: Antique bronze, stainless steel with hair patterns, acrylic lighting, tube lights
Rear wall: Antique bronze mirror stainless steel, light strip, antique bronze hairline stainless steel
Side wall: Antique bronze mirror stainless steel
Floor: PVC/Marble



SAN-118

Ceiling: Painted steel plate, tube light, light strip
Rear wall: Rose gold mirror etched stainless steel, Rose gold mirror stainless steel
Side wall: Rose gold patterned stainless steel, mirror stainless steel inlay strip
Floor: PVC/Marble



SAN-119

Ceiling: Rose gold mirror stainless steel, acrylic lighting
Rear wall: Rose gold mirror etched stainless steel
Side wall: Rose gold mirror etched stainless steel, rose gold patterned stainless steel
Floor: PVC/Marble



SAN-120

Ceiling: Painted steel plate, tube light, light strip
Rear wall: Mirror stainless steel, rose gold patterned stainless steel, light strip
Side wall: Mirror stainless steel, rose gold patterned stainless steel
Floor: PVC/Marble



SAN-121

Ceiling: Antique copper mirror stainless steel, acrylic lighting
Rear wall: Antique bronze mirror stainless steel, antique bronze hairline stainless steel
Side wall: Antique copper mirror stainless steel inlay, antique copper hairline stainless steel
Floor: PVC/Marble

Passenger Cabin Decor



SAN-122

Ceiling: Central image arch, stainless steel bottom panel is supplemented with soft lighting design of down lamp on both sides
Stainless Steel Hairline : Mirror, etched, hairline Handrail: Stainless steel tube handrail
Floor: PVC/Marble



SAN-123

Ceiling: Central image arch, stainless steel bottom panel is supplemented with soft lighting design of down lamp on both sides
Car wall: Mirror, etched, hairline Handrail: Stainless steel tube handrail
Floor: PVC/Marble



SAN-124

Ceiling: Central image arch, stainless steel bottom panel is supplemented with soft lighting design of down lamp on both sides
Car wall: Mirror, Golden etched, hairline Handrail: Golden Stainless steel tube handrail
Floor: PVC/Marble



SAN-125

Ceiling: Central image arch, stainless steel bottom panel is supplemented with soft lighting design of down lamp on both sides
Car wall: Mirror, Golden Etched, hairline Handrail: Golden Stainless steel tube handrail
Floor: PVC/Marble



SAN-126

Ceiling :Mirror Stainless Steel ,acrylic lighting, LED
Car wall: Etched mirror stainless steel,
Handrail: stainless steel round handrail
Floor: PVC/Marble



SAN-127

Ceiling: Central image arch, stainless steel bottom panel is supplemented with soft lighting design of down lamp on both sides
Car wall: Mirror, etched, hairline Handrail: Stainless steel tube handrail
Floor: PVC/Marble



SAN-128

Ceiling: Painted steel plate frame, acrylic transparent board, LED
Car wall: Bronze mirror stainless steel sandblasting
Floor: PVC/Marble



SAN-129

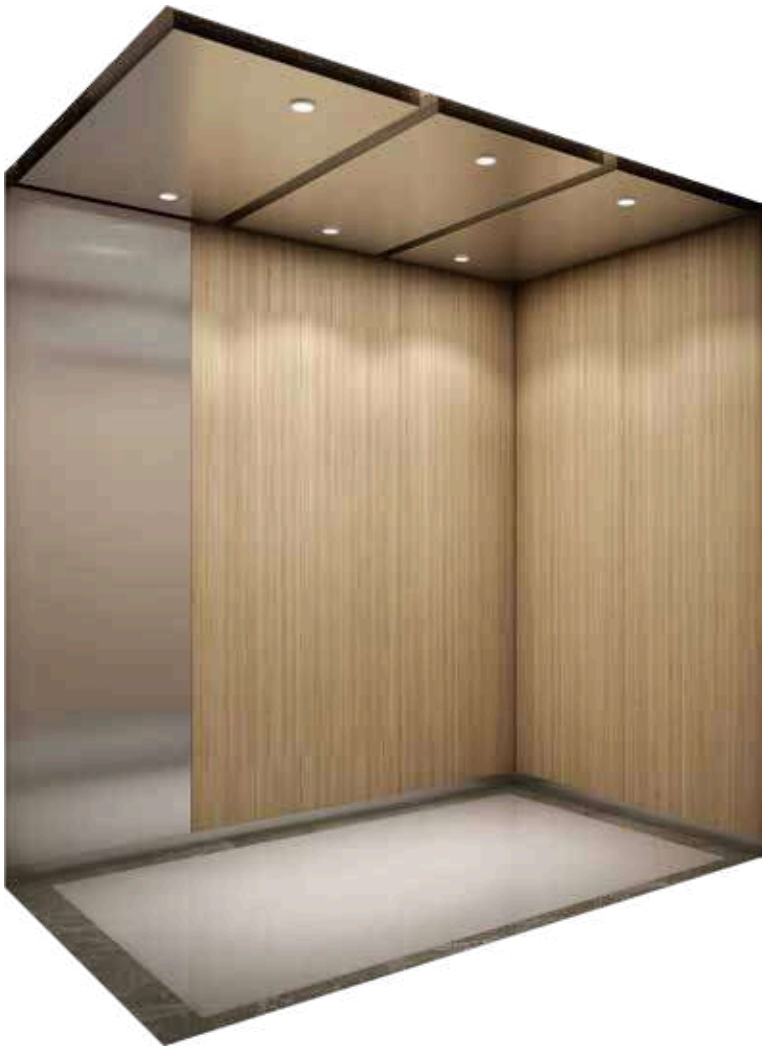
Ceiling: rose gold, stainless steel acrylic lighting
Car wall: rose gold stainless steel, rose gold mirror etched stainless steel
Handrail: stainless steel pipe round handrail
Floor: PVC/Marble

Passenger Cabin Decor



SAN-130

Ceiling: Hairline stainless steel,
tube light
Rear wall: Hairline stainless steel
Side wall: Hairline stainless steel
Floor: PVC/Marble



SAN-131

Ceiling: Hairline stainless steel,
tube light
Rear wall: Wood grain cosmetic
steel plate
Side wall: wood grain cosmetic
steel plate,
hairline stainless steel
Floor: PVC/Marble





MODEL : S20 SL

Passenger Elevator In Built Shaft (Steel)

Our stainless steel shaft elevators are designed for strength, durability, and a sleek, modern finish. Engineered to perform in both residential and commercial environments, this shaft type offers a premium look with long-lasting structural integrity.

✨ Key Benefits:

🛡️ High Durability – Resistant to rust, corrosion, and wear, making it ideal for long-term use

🔥 Fire & Weather Resistant – Performs well in harsh conditions, both indoors and outdoors

💧 Low Maintenance – Easy to clean and maintain, retaining its aesthetic appeal over time

🏠 Modern Appearance – Polished or brushed finishes offer a contemporary, high-end look

🔧 Structural Stability – Provides solid support for smooth, vibration-free elevator movement

Stainless steel shaft elevators are perfect for luxury residences, commercial spaces, and coastal locations, combining aesthetics with rugged performance.



MODEL : S20 AL

Passenger Elevator In Built Shaft (Aluminium)

Our aluminum shaft elevators are a perfect solution for homes or buildings where a traditional concrete shaft is not feasible. Lightweight yet robust, the aluminum shaft offers:

✨ Key Benefits:

🔧 Faster Installation – Pre-fabricated design allows for quicker setup with minimal civil work

🎨 Modern Aesthetics – Sleek, clean finish that complements both interior and exterior architecture

☁️ Corrosion Resistance – Ideal for coastal or humid environments

📏 Space Efficiency – Designed to fit in compact spaces without structural modifications

🏠 Versatile Placement – Can be installed indoors or outdoors with equal efficiency

Aluminum shaft elevators are ideal for villas, duplex homes, penthouses, and retrofit projects, offering style, flexibility, and performance without the need for heavy structural construction.



Passenger Cabin Decor



SAN-201

Ceiling: Mirror stainless steel, tube light
Rear wall: Aluminum alloy frame, safety glass
Side wall: Aluminum alloy frame, safety glass, black titanium mirror stainless steel
Floor:
PVC/Marble



SAN-202

Ceiling: Black titanium mirror stainless steel, acrylic lighting
Rear wall: Black titanium aluminum alloy, safety glass, light strip
Side wall: Black titanium aluminum alloy, safety glass
Floor:
PVC/Marble



SAN-203

Ceiling: Mirror stainless steel, light strip
Rear wall: Aluminum alloy, rock slab
Side wall: Aluminum alloy, safety glass
Floor:
PVC/Marble



SAN-204

Ceiling: Black titanium mirror stainless steel, acrylic lighting, safety glass
Rear wall: Black titanium aluminum alloy, safety glass
Side wall: Black titanium aluminum alloy, safety glass
Floor:
PVC/Marble



SAN-205

Ceiling: Rose gold patterned stainless steel, acrylic lighting
Rear wall: Rose gold aluminum alloy, safety glass
Side Wall: Rose gold aluminum alloy, safety glass
Floor:
PVC/Marble



SAN-206

Ceiling: Rose gold patterned stainless steel, acrylic lighting, tube light
Rear wall: Rose gold aluminum alloy, safety glass
Side Wall: Rose gold aluminum alloy, safety glass
Floor:
PVC/Marble



SAN-207

Upper and lower covers: Hairline stainless steel, light strip
Ceiling: Hairline stainless steel, acrylic lighting, tube light
Rear wall: Hairline stainless steel, safety glass
Side wall: Hairline stainless steel, safety glass
Floor: PVC/Marble



SAN-204

Upper and lower covers: Titanium gold patterned stainless steel, decorative lighting
Ceiling: Titanium mirror stainless steel, acrylic lighting, tube light
Rear wall: Titanium mirror stainless steel, safety glass
Side wall: Titanium mirror stainless steel, safety glass
Floor: PVC/Marble

Aluminum Alloy Shaft



MODEL : S20

Cabin Glass Finish



MODEL : S20

Cabin Car Finish



Standard Function

VVVF drive	Motor rotating speed can be precisely adjusted to get smooth speed curve in lift start, travel and stop and gain the sound comfort.
VVVF door operator	Motor rotating speed can be precisely adjusted to get the more gentle and sensitive door machine start / stop.
Independent running	The lift can not respond to outer calling, but only respond to the command inside the car through the action switch.
Automatic pass without stop	When the car is crowded with the passengers or the load is closeto preset value, the car will automatically pass the calling landing in order to keep maximum travel efficiency.
Automatically adjust door opening time	Door-open time can be automatically adjusted according to the difference between landing calling or car calling.
Reopen with hall call	In the door shutting process, press reopen with hall call button can restart the door.
Express door closing	When the lift stops and opens the door, press door-shut button, the door will be closed immediately.
Car stops and door open	The lift decelerates and levels, the door only opens after the lift comes to a complete stop.
Car arrival gong	Arrival tong in the car top announces that the passengers arrive.
Command register cancel	If you press the wrong floor command button in the car, twice continuous pressing of same button can cancel the registerec command.
Photocell protection	In the door open and shut period, infrared light that covers the whole door height is used to probe the door protection device of both the passengers and objects.
Designated stop	If the lift can not open the door in the destination floor out of some reason, the lift will close the door and travel to the next designated floor.
Overload holding stop	When the car is overload, the buzzer rings and stops the lift in the same floor.
Anti-stall timer protection	The lift stops operation due to slippery traction wire rope.
Start protection control	If the lift does not leave door zone within the designated time after it gets started, it will stop the operation.
Inspection operation	When the lift enters into inspection operation, the car travels at inching running.
Fault self-diagnosis	The controller can record 62 latest troubles so as to quickly remove the trouble and restore the lift operation.
Repeated door closing	If the lift can not close the door due to certain obstacle or interference, the lift will reopen or re- shut the door until sundries are eliminated.
Up/down over-run and final limitprotection	The device can effectively prevent from the lft' s surging to the top or knocking the bottom when it is out of the control. It results in the more safe and reliable lift travel.
Down over- speed protection device	When the lift downs 1.2 times higher than the rated speed, this device will automatically cut off control mains, stop the motor running so as to stop lift down at over-speed. If the lift continues to down at over-speed, and the speed is 1.4 times higher than rated speed, safety tongs act to force the lift stop in order to ensure the safety.
Upward over-speed protection device	When the lift ups 1.2 times higher than rated speed, the device will automatically decelerate or brake the lift.
Micro-touch buttton for car call and hall call	Novel micro-touch button is used for operation panel command button in the car and landing calling button.
Floor and direction indicator inside car	The car shows the lift floor location and current travel direction.
Floor and direction indicator	The landing shows the lift floor location and current travel direction.
Emergency car lighting	Emergency car lighting automatically activated once power failure.
Inching running	When the lift enters into emergency electric operation, the car travels at low speed inching running.
Five way intercom	Communication amid car, car top, lift machine room, well pit and rescue duty room through walkie-talkie.
Bell	In emergency conditions, if bell button above car operation panel is continuously pressed, electric bell rings on top of the car.
Fire emergency return	If you start key switch in main landing or monitor screen, all the callings will be cancelled. The lift directly and immediately drives to the designated rescue landing and automatically opens the door.
Car vniation, light automatic shut off	If there is no clling or command signal within the stipulated time, the car fan and lighting will be automatically closed in order to save the energy.
Remote shut-off	The lift can be called to main landing (after finishing the service) through the key switch and automatically exists the service.



Optional Functions

Leveling when power failure	In normal power failure, the chargeable battery supplies the lift power. The lift drives to the nearest landing.
Anti-nuisance	In the light lift load, when three more commands appear, in order to avoid the unnecessary parking, all the registered callings in the car will be cancelled.
Open the door in advance	When the lift decelerates and enters into door open zone, it automatically opens the door to enhance the travel efficiency.
Direct parking	It completely accords with distance principle with no crawling in the leveling. It greatly enhances the travel efficiency.
Group control function	When three or more same model lift groups are controlled in use, the lift group can automatically choose the most appropriate response. It avoids the repeated lift parking, reduces the passengers' waiting time and increases the travel efficiency.
Duplex control	Two sets of same model lifts can unanimously respond the calling signal through the computer dispatch. In this way, it reduces the passengers' waiting time to the greatest extent and enhances the travel efficiency as well.
On-duty peak service	Within the preset on-duty time, upward transport from the home landing is extremely busy. The lifts are continuously dispatched to the home landing in order to satisfy on-duty peak service.
Off-duty peak service	Within the preset off-duty period, the lifts are continuously dispatched to top floor in order to satisfy off-duty peak service.
Door open time extending	Press special button in the car, the lift door keeps open for certain period of time.
Voice announcer	When the lift normally arrives, voice announcer informs the passengers about the relevant information
Car assistant operation box	It is used in the large loading weight lifts or the lifts with crowded passengers so that more and more passengers can use the car.
Operation box for the handicapped	It is convenient for the wheelchair passengers and those who have vision problems.
Intelligent calling service	The car command or hoist-way calling can be locked or connected through special Intelligent Input.
IC card control function	All (partial) landings can only input car commands through IC Card after the authorization.
Remote monitor	The lift long-distance monitor and control can be fulfilled through modem and telephone. It is convenient for the factories and service units to timely know the travel conditions of every lift and promptly take the corresponding measures.
Remote control	The lift can have independent travel according to the specific requirements through operation monitor screen (optional).
Camera function in the car	The camera is installed in the car to monitor the car conditions.

Touch Screen

10 -12 inches



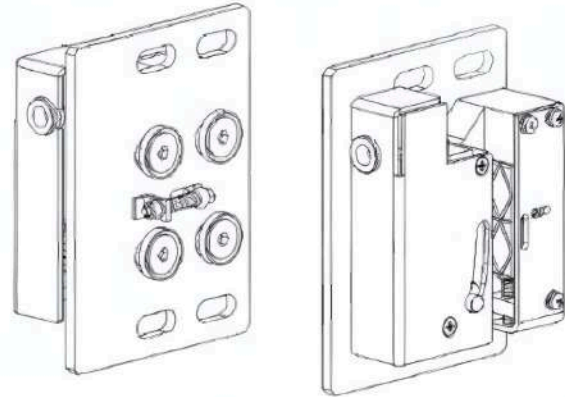
16-24 inches



Multiple Security Mechanisms

ElectroMagnetic Safety Gear

Electromagnetic safety gear is an elevator safety device based on the principle of electromagnets. Compared with hydraulic safety gear and mechanical safety gear, smoother braking effect, faster reaction speed.

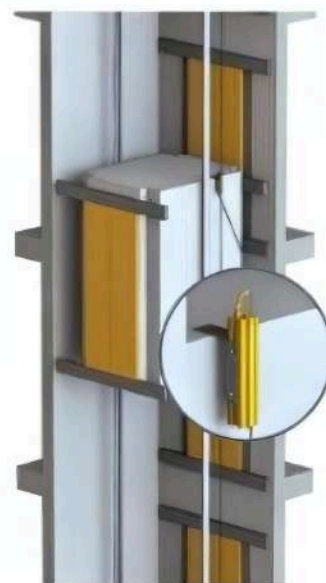


Magnetic Leveling Device

German ELGO magnetic scale-absolute position shaft measurement system LIMAX2M is equivalent to a combination of speed limiter + photoelectric switch + end station switch, with a control accuracy of 0.1mm.

It requires very little installation space, and dust, dirt and even black smoke will not affect the effect.

Even under humid and high temperature conditions, the system can operate stably and has the advantages of long service life and maintenance-free.



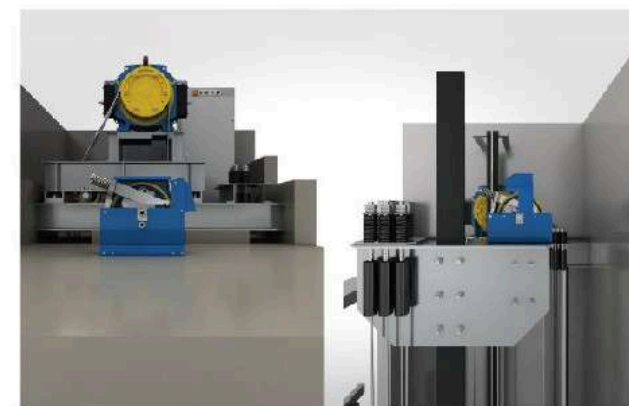
Comprehensive Safety Protection

Infrared Light Curtain Protection

The entrance is equipped with a dense sensitive infrared light curtain so it can respond to any people or articles entering in the detection area and is very safe and more accessible.

Overspeed Protective Devices

It is equipped with overspeed protective devices such as speed limit devices, safety clamps and buffers so as to prevent overspeed or uncontrollable phenomena of elevators and avoid accidents of rapidly falling cars.



UCMP

UCMP system can automatically detect unintended movement and make brake motion to stop elevator through control system. Thus passengers can go in /out safely.



