



ICON Electric Vehicles

(866) 426-6380 • sales@iconev.com
203 Kelsey Lane, Suite E • Tampa, FL 33619

www.iconev.com

© 2017 ICON Electric Vehicles. All Rights Reserved.



OWNER'S MANUAL

i20, 120U, & i20L Models
i40, 140F, & i40L Models
i60, 160F, & i60L Models
i80 Models

IMPORTANT NOTES ABOUT MY VEHICLE



©2019 by ICON Electric Vehicles, LLC • USA
All rights reserved. Any reprinting or unauthorized use without the
expressed written permission of ICON EV LLC is strictly prohibited.
Printed in USA

INDEX

	PAGE
ACCELERATOR PEDAL	9
BATTERIES	9, 16, 18, 19
BATTERY INDICATOR	11
BRAKE PEDAL	11, 20
COMBINATION SWITCH	11
FORWARD/REVERSE SWITCH	10
KEY SWITCH	10
LABELS	3
MAGNETIC BRAKE	14
MAIN SWITCH	10
MAINTENANCE	12
OPERATION	4
PEDAL OPERATION	8
PRE-OPERATION	8
REVERSE ALARM	8
SAFETY	6
SEAT	8
STEERING SYSTEM	8
STORAGE (LONG TERM)	21
STORAGE OF VEHICLE	7
TIRE AIR PRESSURE	9
TIRE WEAR LIMIT	9
WHEEL REPLACEMENT	20

INTRODUCTION

THANK YOU for your purchase of an ICON Electric Vehicle. This Owners Manual contains information you will need to read and understand for proper operation, maintenance, and care of your new ICON. A thorough understanding of this information will help you achieve the maximum use and enjoyment of your new ICON.

If you have additional questions, or do not completely understand anything about the operation or maintenance of your new ICON, please contact your ICON dealer, or feel free to email us at questions@iconev.com

CONTENTS

	PAGE
IMPORTANT INFORMATION	2
LABELS	3
OPERATOR SAFETY	4
STRUCTURE	5
SAFETY CONSIDERATION	6
STORAGE AND BATTERY CHARGING	7
PRE-OPERATION CHECKS	8
OPERATION AND CONTROL	10
MAINTENANCE	12
MAGNETIC BRAKE	14
BATTERY MAINTENANCE	16
GENERAL MAINTENANCE	20
STORAGE	21
VEHICLE SPECIFICATIONS	22-31
INDEX	32

IMPORTANT INFORMATION

Particularly important information is distinguished by using the following symbols and notes :

⚠ WARNING

THE SAFETY ALERT SYMBOL MEANS ATTENTION! BE ALERT! YOUR SAFETY IS INVOLVED!

⚠ WARNING

Failure to follow all WARNING instructions could result in severe injury or even death to the vehicle occupants or bystanders.

CAUTION

Messages with this heading describe special precautions that should always be taken to avoid damaging your vehicle.

NOTE

Messages with this heading provide additional important information.

NOTE

ICON Electric Vehicles continually strives to produce the highest quality possible. Although this manual contains the latest product information available at the time of printing, there may be slight differences between this manual and your particular vehicle. Should you have any questions, please contact your ICON dealer or email us at questions@iconev.com

This manual should be considered as a permanent part of your golf car and should stay with the car when the car is resold.

⚠ WARNING

Read and understand this manual completely before operating your new vehicle.



ICON i80

Controller	Toyota 350ah NEOS
Batteries	Lead Acid - 8v x 6 pcs
Motor	4kw AC Drive
Battery Charger	Delta Q Onboard
Passengers	8
Dimensions	Length x Width x Height: 168.5 x 47.25 x 70.75 (inches)
Wheelbase	124.8 inches
Weight (including batteries)	1388 pounds
Load Capacity	1278 pounds
Max. Speed	19 MPH
Range	30-40 miles
Turning radius	16.7 feet
Climbing capacity	25% grade
Stopping distance	>14 feet
Ground clearance	4 inches



ICON i60L

Controller	Toyota 350ah NEOS
Batteries	Lead Acid - 8v x 6 pcs
Motor	4kw AC Drive
Battery Charger	Delta Q Onboard
Passengers	6
Dimensions	Length x Width x Height: 138.5 x 48.25 x 78.25 (inches)
Wheelbase	94.8 inches
Weight (including batteries)	1320 pounds
Load Capacity	992 pounds
Max. Speed	19 MPH
Range	30-40 miles
Turning radius	12.8 feet
Climbing capacity	25% grade
Stopping distance	>14 feet
Ground clearance	7 inches

IMPORTANT LABELS

SAFETY & INSTRUCTION LABELS



WARNING
Please read the attached labels carefully before driving the golf car, and promptly replace any label that is damaged or removed.

OPERATION INSTRUCTIONS



parking pedal Brake pedal Accelerator pedal

- Read the manual and safety instruction labels on the golf car before driving :
- Be sure that passengers are seated stably .
- Select " forward " or " reverse " key .
- Tread the accelerator to start moving ; and tread the parking pedal to stop .
- Please drive safely according to the terrain ,visibility and driving experience ; please drive carefully in the crowded and slippery places .
- When parking , please tread the parking pedal and draw up the handle of hand brake . When starting the car , please release the handle .
- Forward or back off the car when it is ready .

Operion Instructions Label



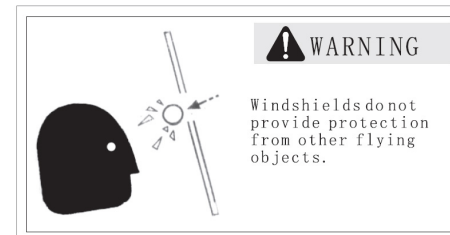
Warning/Avertissment Label



WARNING

- * Please read all safety and instruction labels before operating vehicle
- * No additional passengers beyond the stated vehicle capacity
- * Do not move vehicle until all passengers are seated properly
- * Reduce speed when turning
- * Make sure parking brake is engaged before leaving vehicle
- * Turn off main power switch and remove key when not in use
- * Keep hands and feet inside vehicle at all times

Warning Label



Windshield Warning Label

OPERATOR SAFETY

ICON electric vehicles are designed to be simple to operate. Be sure to observe the following guidelines to reduce the risk of serious injury or death due to loss of vehicle control and/or other hazards:

BEFORE OPERATING THE VEHICLE

- Read and understand the Owners Manual and all safety and instruction labels on the vehicle before operating.
- Perform the pre-operation checks outlined in this manual.
- Only authorized persons should operate the vehicle, and only in designated areas.
- Do not allow more passengers in the vehicle than the actual capacity of that particular vehicle.
- Passenger capacity information for specific models is available in the SPECIFICATIONS section of this manual.
- NEVER operate the vehicle while under the influence of alcohol or drugs. Their effect on vision, depth perception, and judgment make operating a vehicle extremely dangerous.

DURING VEHICLE OPERATION

- Remain seated, and keep your entire body inside the vehicle while it is in motion.
- Do not operate the vehicle until ALL occupants are seated.
- Keep your hands on the steering wheel and eyes on the path ahead.
- When in congested areas, use extra care.
- When backing up, always go slowly and watch carefully.
- Avoid abrupt starts or stops.
- Vehicle speed should be appropriate for the terrain.
- Avoid sharp turns, especially at higher speeds.
- A sharp turn at too high a speed could result in a vehicle rollover.
- Always drive straight up or straight down a slope. Never drive on a slope at an angle or you may accidentally roll the vehicle over.
- Do not make any modifications to the vehicle which affect capacity or safe operation



ICON i60F

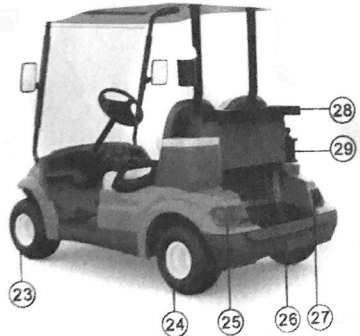
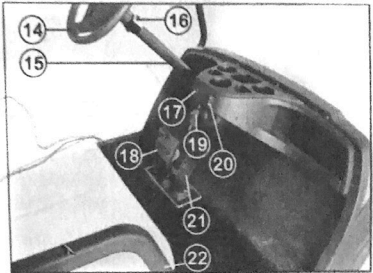
Controller	Toyota 350ah NEOS
Batteries	Lead Acid - 8v x 6 pcs
Motor	4kw AC Drive
Battery Charger	Delta Q Onboard
Passengers	6
Dimensions	Length x Width x Height: 154 x 47.25 x 70.75 (inches)
Wheelbase	124.8 inches
Weight (including batteries)	1300 pounds
Load Capacity	992 pounds
Max. Speed	19 MPH
Range	30-40 miles
Turning radius	15.8 feet
Climbing capacity	25% grade
Stopping distance	>14 feet
Ground clearance	4 inches

STRUCTURE



ICON i60

Controller	Toyota 350ah NEOS
Batteries	Lead Acid - 8v x 6 pcs
Motor	4kw AC Drive
Battery Charger	Delta Q Onboard
Passengers	86
Dimensions	Length x Width x Height: 138.5 x 47.25 x 70.75 (inches)
Wheelbase	94.8 inches
Weight (including batteries)	1300 pounds
Load Capacity	992 pounds
Max. Speed	19 MPH
Range	30-40 miles
Turning radius	12.8 feet
Climbing capacity	25% grade
Stopping distance	>14 feet
Ground clearance	4 inches



WHOLE STRUCTURE

- ① Roof
- ② Sand bottle
- ③ Cooler
- ④ Rear wheel trim
- ⑤ Side mirror
- ⑥ Windshield
- ⑦ Windshield frame
- ⑧ Headlight / R
- ⑨ Front bumper
- ⑩ Front cover
- ⑪ Headlight / L
- ⑫ Side trim panel
- ⑬ Rear body cover
- ⑭ Steering wheel
- ⑮ Steering column
- ⑯ Turn signal arm
- ⑰ Power indicator
- ⑱ Brake pedal
- ⑲ Key switch
- ⑳ Switch F/R
- ㉑ Accelerator
- ㉒ Armrest
- ㉓ Front tire
- ㉔ Rear tire
- ㉕ Tail light / L
- ㉖ Rear bumper
- ㉗ Tail light / R
- ㉘ Bag holder
- ㉙ Ball washer

SAFETY CONSIDERATIONS

SAFETY PRECAUTIONS DURING MAINTENANCE

When performing maintenance, follow all safety instructions contained in the manufacturer's operation and service manuals, as well as the following safety procedures:

- Properly immobilize golf car before beginning any maintenance to avoid any unexpected vehicle movement.
- Properly block chassis before working underneath golf car to avoid any unexpected vehicle movement.
- When working on the fuel system or the battery, do not smoke, or allow any sparks or open flames near the vehicle, to avoid any fires or explosions.
- Before working on an electric golf car, disable the car's electrical system in accordance with the manufacturer's instructions to avoid electrical shock or damage to the electrical system.
- Use only properly insulated tools when working on electrically powered golf cars or around batteries to avoid electrical shock or damage to the electrical system.
- Maintain all safety devices including brakes, steering mechanisms, warning devices, and governors, in a safe operating condition. Do not modify these safety devices as supplied by the manufacturer.
- After each maintenance or repair, the car must be driven by a qualified, trained, and authorized person - in an area free of pedestrian traffic - to ensure proper operation and adjustment.
- Record all maintenance performed in a maintenance



ICON i40L

Controller	Toyota 350ah NEOS
Batteries	Lead Acid - 8v x 6 pcs
Motor	4kw AC Drive
Battery Charger	Delta Q Onboard
Passengers	4
Dimensions	Length x Width x Height: 108.6 x 48.25 x 78.25 (inches)
Wheelbase	65 inches
Weight (including batteries)	1226 pounds
Load Capacity	661 pounds
Max. Speed	19 MPH
Range	30-40 miles
Turning radius	9.5 feet
Climbing capacity	25% grade
Stopping distance	>14 feet
Ground clearance	7 inches



ICON i40F

Controller	Toyota 350ah NEOS
Batteries	Lead Acid - 8v x 6 pcs
Motor	4kw AC Drive
Battery Charger	Delta Q Onboard
Passengers	4
Dimensions	Length x Width x Height: 124.5 x 47.25 x 70.75 (inches)
Wheelbase	94.8 inches
Weight (including batteries)	1124 pounds
Load Capacity	661 pounds
Max. Speed	19 MPH
Range	30-40 miles
Turning radius	12.8 feet
Climbing capacity	25% grade
Stopping distance	>14 feet
Ground clearance	4 inches

record log by date, name of person performing maintenance, and type of maintenance. Periodically inspect maintenance log to ensure accurate and complete entries.

- Provide operator comment cards to assist in identifying non-periodic maintenance needs for specific golf cars.

- Maintain in a legible condition all nameplates, warnings, and instructions provided by the manufacturer.
- If new nameplates, warnings, or instructions are needed, contact your authorized ICON dealer.

STORAGE AND BATTERY CHARGING

Take the following precautions to ensure maintenance worker safety:

- Only use battery charging facilities and procedures that are in accordance with applicable ordinances and regulations to avoid explosions, electrical shock or damage to the electrical system.
 - Periodically inspect charging facilities and procedures to be certain that applicable safety codes, regulations, and procedures are being followed to avoid any fires or explosions.
-

PRE-OPERATION CHECKS

Pre-operation checks should be made each time you use your golf car. Get in the habit of performing the following checks in the same way so that they become second nature.

⚠ WARNING

To keep car from moving while performing pre-operation checks:

- Remove main switch key.
- Apply parking brake.

Death or serious personal injury can result from failing to comply with the safety instructions in this manual.

PRE-OPERATION CHECKLIST

Before each use check the following:

- ✓ Batteries
- ✓ Tire condition
- ✓ Steering system
- ✓ Reverse alarm
- ✓ Pedal operation
- ✓ Body and chassis

SEAT

Open the seat for checking and servicing.

STEERING SYSTEM

Check the steering system for excessive free play by:

- moving the steering wheel up and down, and back and forth.
- turning the steering wheel slightly to the right and left.

If you feel excessive free play, or hear rattling sounds which may indicate loose steering components, consult an ICON dealer.

REVERSE ALARM

Check the reverse alarm by moving the drive select switch to "REV" for reverse. The alarm should sound.

PEDAL OPERATION

Check the following pedal controls for proper operation. If a pedal does not work properly, consult an ICON dealer.



ICON i40

Controller	Toyota 350ah NEOS
Batteries	Lead Acid - 8v x 6 pcs
Motor	4kw AC Drive
Battery Charger	Delta Q Onboard
Passengers	4
Dimensions	Length x Width x Height: 108.5 x 47.25 x 70.75 (inches)
Wheelbase	65 inches
Weight (including batteries)	1215 pounds
Load Capacity	661 pounds
Max. Speed	19 MPH
Range	30-40 miles
Turning radius	9.5 feet
Climbing capacity	25% grade
Stopping distance	>14 feet
Ground clearance	4 inches



ICON i20L

Controller	Toyota 350ah NEOS
Batteries	Lead Acid - 8v x 6 pcs
Motor	4kw AC Drive
Battery Charger	Delta Q Onboard
Passengers	2
Dimensions	Length x Width x Height: 94.5 x 48.5 x 78.25 (inches)
Wheelbase	65 inches
Weight (including batteries)	1114 pounds
Load Capacity	370 pounds
Max. Speed	19 MPH
Range	30-40 miles
Turning radius	9.5 feet
Climbing capacity	25% grade
Stopping distance	>14 feet
Ground clearance	7 inches

ACCELERATOR PEDAL

⚠ WARNING

with the main switch in the "OFF" position, make sure the accelerator pedal operates smoothly

BATTERIES

Check that the batteries are held securely in place to prevent them from being damaged from vibration or jarring. Also check that no battery caps are missing to prevent battery acid from spilling from the batteries. Check the battery terminals for corrosion.

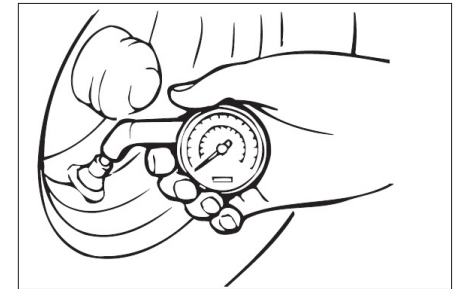
⚠ WARNING

Battery electrolyte is poisonous and dangerous, causing severe burns, etc. It contains sulfuric acid. Avoid contact with skin, eyes or clothing. Ventilate when charging or using in enclosed space. Always shield eyes when working near batteries. **KEEP OUT OF REACH OF CHILDREN.**

TIRE CONDITION

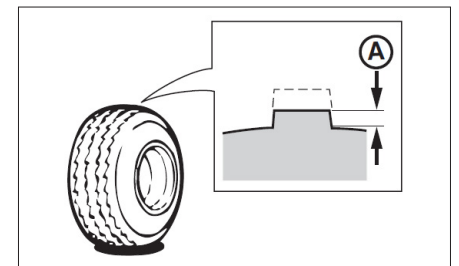
Tire Air Pressure

Check the tire air pressure before operating the golf car.



Tire Wear Limit

Check the tire surface for damage, cracks or embedded objects. When tire tread wears down to 1 mm (0.04 in.), replace the tire.



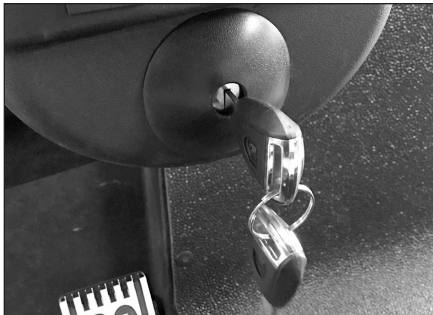
OPERATION AND CONTROL



TURNING ON MAIN SWITCH

The main power switch is located underneath the seat in the battery compartment. It is a 3-position switch. AUTO EMB is the normal run position. The center position is OFF.

The MANUAL EMB position is for times when the cart must be manually pushed. MANUAL EMB function is explained in more detail on pages 14-15.



KEY SWITCH

Insert the vehicle key into the ignition slot and turn the key to the right to operate the vehicle. The key cannot be removed until turning the vehicle off.



FORWARD/REVERSE SWITCH

The Forward/Reverse switch determines which direction the vehicle will travel. When changing directions, always allow the vehicle to come to a complete stop before switching directions.

⚠ WARNING

Always make sure vehicle comes to a COMPLETE stop before using the F/R switch to change directions.

Pressing the F/R switch while the vehicle is still in motion may damage the switch, the speed sensor, the motor or other components.



ICON i20U

Controller	Toyota 350ah NEOS
Batteries	Lead Acid - 8v x 6 pcs
Motor	4kw AC Drive
Battery Charger	Delta Q Onboard
Passengers	2
Dimensions	Length x Width x Height: 118 x 47.25 x 70.75 (inches)
Wheelbase	65 inches
Weight (including batteries)	1124 pounds
Load Capacity	370 pounds
Max. Speed	19 MPH
Range	30-40 miles
Turning radius	10.5 feet
Climbing capacity	25% grade
Stopping distance	>14 feet
Ground clearance	4 inches

VEHICLE SPECIFICATIONS



ICON i20

Controller	Toyota 350ah NEOS
Batteries	Lead Acid - 8v x 6 pcs
Motor	4kw AC Drive
Battery Charger	Delta Q Onboard
Passengers	2
Dimensions	Length x Width x Height: 94.5 x 47.25 x 70.75 (inches)
Wheelbase	65 inches
Weight (including batteries)	1036 pounds
Load Capacity	370 pounds
Max. Speed	19 MPH
Range	30-40 miles
Turning radius	9.5 feet
Climbing capacity	25% grade
Stopping distance	>14 feet
Ground clearance	4 inches



BATTERY INDICATOR

The battery indicator displays the current battery level status. The illuminated status bars will decrease from right to left as the batteries are depleted.



COMBINATION SWITCH

This switch operates the turn signals, headlights, and horn.



BRAKE PEDAL

For vehicles equipped with a manual parking brake, press the top left corner of the brake pedal to engage the parking brake.

To disengage the parking brake, press the accelerator pedal.

For vehicles equipped with a magnetic parking brake, please see the section in this manual regarding magnetic brake operation.

MAINTENANCE

PERIODIC MAINTENANCE CHARTS

Regular maintenance is required for the best performance and safe operation of your electric vehicle.

C • CHECK CA • CHECK AND ADJUST R • REPLACE S • SERVICE CL • CLEAN AND LUBRICATE L • LUBRICATE

	Remarks	Daily Pre-Operation	40 rounds 20 hours 100 miles 160 kms (Every Month)	250 rounds 125 hours 600 miles 1000 kms (Every 6 Months)	500 rounds 250 hours 1200 miles 2000 kms (Every Year)	1000 rounds 500 hours 2500 miles 4000 kms (Every 2 Years)	2000 rounds 1000 hours 5000 miles 8000 kms (Every 4 Years)
PRE-OP	Charge	S	S	S	S	S	S
	Clean battery tops, check for tightness of hold-down screws and terminals	S	S	S	S	S	S
	Check brake pedal freeplay and adjust if necessary	C	CA	CA	CA	CA	CA
	Check steering operation	C	C	C	C	C	C
	Check tire pressure, tread depth, tire surface for damage	C	CA	CA	CA	CA	CA
	Check tightness of all bolts, nuts, screws and revets	C	C	C	C	C	C
EVERY MONTH	Check reverse alarm operation	C	C	C	C	C	C
	Check electrolyte level		C	C	C	C	C
	Check for loose or broken connections		C	C	C	C	C
EVERY 6 MONTHS	Clen/Lube pedal control area		CL				
	Check all wire insulation for cracks and/or worn spots			C	C	C	C
	Check shock absorbers for oil leaks and damage springs			C	C	C	C

WARNING

Be sure to turn off the main switch and apply the parking brake when you perform maintenance, unless otherwise specified. If the owner is not familiar with servicing the machine, death or serious personal injury can result. When in doubt the work should be done by an authorized ICON dealer or other qualified mechanic.

STORAGE

Perform the following preparations when storing your golf car for extended periods of time:

TIP

Turn main switch key to “OFF” position, lift seat and switch main power switch in the “OFF” position. Remove key from main key switch, and store key in a safe place.

NOTICE

Do not allow cleaning solution to enter battery cells. Serious battery damage can result.

3. Clean the top of the batteries with a solution of baking soda and water, as necessary, to remove corrosion.

CHASSIS PREPARATION

1. Verify the tire pressure is set to 137 kPa, 1.4 kgf/cm² (25 psi).
2. Clean exterior of the golf car and apply a rust inhibitor.
3. Cover the golf car with a breathable cover and store it in a dry, well-ventilated area.

BATTERY PREPARATION

1. Remove the batteries from the golf car and store them in a cool, dry place that stays between 0°C (32°F) and 30°C (90°F).
2. Have the batteries recharged every 60-90 days to keep them fully charged. The batteries must be kept fully charged to avoid damage.

GENERAL MAINTENANCE



⚠ WARNING

Before performing wheel or brake maintenance, verify that the main switch is in the “OFF” position.

Accidental starting of the vehicle could cause the vehicle to move, causing death or serious personal injury.

⚠ WARNING

Consult your ICON dealer before using your golf car if you suspect brake problems. Brake failure could result in a serious accident.

Death or serious personal injury can result from failing to comply with the safety instructions in this manual.

WHEEL REPLACEMENT

To remove and install a wheel on your golf car.

1. With the wheels blocked to prevent the golf car from moving, loosen the wheel nuts.
2. Elevate the golf car with a jack and remove the wheel nuts and the wheel.
3. Reverse the removal steps when installing the wheel.

Wheel nut tightening torque:

80 Nm, 8.0 m•kg (58 ft•lb)

	Remarks	Daily Pre-Operation	40 rounds 20 hours 100 miles 160 kms (Every Month)	250 rounds 125 hours 600 miles 1000 kms (Every 6 Months)	500 rounds 250 hours 1200 miles 2000 kms (Every Year)	1000 rounds 500 hours 2500 miles 4000 kms (Every 2 Years)	2000 rounds 1000 hours 5000 miles 8000 kms (Every 4 Years)
EVERY YEAR	Perform a discharge test				S	S	S
	Apply terminal protectant				S	S	S
	Check rear axle bearing play for roughness or freeplay				C	C	C
	Check steering knuckle bushing freeplay / Adjust wheel alignment				CA	CA	CA
	Check wheel nut tightness, front wheel bearing play				C	C	C
	Check transaxle oil level and inspect for leakage				C	C	C
	Check pedal stop operation and adjust if necessary				CA	CA	CA
EVERY 4 YEARS	Replace transaxle oil						R
	Inspect brake shoes and adjust or replace if necessary						CA

MAGNETIC BRAKE

IMPORTANT

If your vehicle is equipped with a magnetic parking brake, there are several things you need to be aware of.

1. The magnetic parking brake engages automatically every time your vehicle comes to a complete stop.
2. The magnetic brake is disengaged by stepping on the accelerator pedal.
3. In the event you need to manually push your vehicle, you can use the MANUAL EMB function.

In the battery compartment under the seat, flip the main switch to the MANUAL EMB position.

This sends electrical current to the magnetic brake, disengaging it, and allowing the cart to be manually pushed. Once the cart has been pushed to its desired location, flip the switch to either the OFF position, or the AUTO EMB position.

4. While the vehicle is in the MANUAL EMB setting, the vehicle will have no parking brake, and the vehicle will freely roll. Do not leave a

vehicle unattended in the MANUAL EMB setting as the vehicle may roll and injure someone.

5. DO NOT LEAVE THE SWITCH IN THE MANUAL EMB SETTING FOR AN EXTENDED PERIOD OF TIME. This may result in damage to the magnetic brake.
6. If your vehicle has had a catastrophic battery or other failure and does not have the necessary 24 volts required to disengage the magnetic brake, you may disengage it manually. Instructions on manually disengaging the magnetic brake are on the next page.

! WARNING

When working with batteries, do not put wrenches or other metal objects across the battery terminals. An arc can occur causing an explosion or fire at the battery.

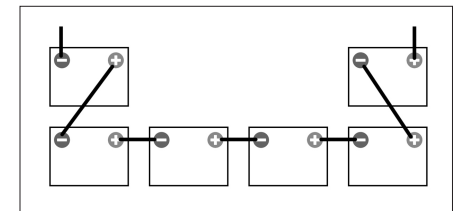
! WARNING

When installing batteries:

- Carefully place battery cables and hold-downs making sure that cables do not lay across vent caps.
- Always remove the negative (-) cable to the motor controller first, and install it last. A spark can occur causing an explosion or fire at the battery.

BATTERY INSTALLATION

1. Turn main power switch to "off" position.
2. Remove battery hold-down bar.
3. Remove battery cables.
4. Remove old batteries and dispose of properly.
5. Install new batteries with posts in proper location.
6. Re-install battery hold-down bar
7. Re-install battery cables per diagram and torque to 80lb.



Battery cables diagram

BATTERY MAINTENANCE

⚠ WARNING

Do not disconnect the DC output cord from the DC charger receptacle when the charger is on or an arc could occur that may cause an explosion.

BATTERY CHARGING

To charge the batteries in your golf car, follow the instructions contained in your battery charger's owner's manual. The following is a summary of the charging steps.

1. Turn main switch key to "OFF" position.

NOTICE

Always put the main power switch in the "OFF" position before charging battery or damage to the electrical system may result.

2. Lift up the seat and move the main power switch to the OFF position.

NOTICE

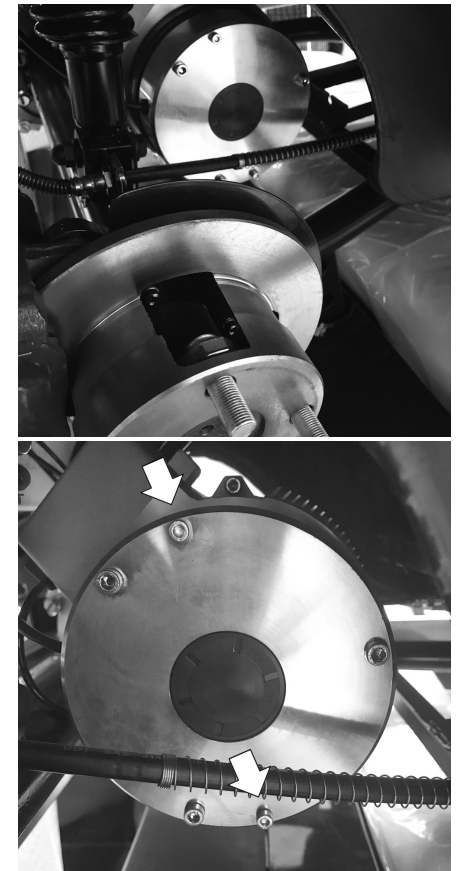
Use only battery chargers that are rated for use with 48-volt electric vehicles. Serious battery damage can result. Thoroughly read and understand the user manual supplied with your 48-volt charger.

3. With the charger properly connected and grounded (see charger's owner's manual), insert the charging cord into the charger receptacle.

MAGNETIC BRAKE

HOW TO MANUALLY DISENGAGE THE MAGNETIC BRAKE:

- A. Locate the magnetic brake assembly behind the right rear wheel.
- B. Of the (5) screws on the magnetic brake assembly, locate the (2) smaller ones.
- C. With a T-25 Torx wrench, lightly tighten the (2) smaller bolts. (DO NOT over-tighten).
- D. Once the smaller (2) bolts are tightened, the vehicle may be manually pushed.
- E. The magnetic brake will NOT be able to re-engage until the (2) small bolts are loosened back up.
- F. When the vehicle has had the (2) small screws on the magnetic brake tightened, the vehicle will have no parking brake and will freely roll. Do not leave a vehicle unattended in the MANUAL EMB setting as the vehicle may roll and injure someone.



Magnetic brake assembly

BATTERY MAINTENANCE

⚠ WARNING

Battery electrolyte is poisonous and dangerous, causing severe burns, etc. It contains sulfuric acid.

Avoid contact with skin, eyes, or clothing.

Antidote:

EXTERNAL: Flush with water.

INTERNAL: Drink large quantities of water or milk. Follow with milk of magnesia, beaten egg, or vegetable oil. Call physician immediately.

EYES: Flush with water for 15 minutes and get prompt medical attention.

Batteries produce explosive gases. Keep sparks, flame, cigarettes, etc., away.

Ventilate when charging or using in enclosed space. Always shield eyes when working near batteries.

KEEP OUT OF REACH OF CHILDREN.

BATTERY CARE

Six 8-volt deep cycle batteries provide power for your electric golf car and must be properly maintained and recharged for maximum performance and service life.

To maintain your batteries:

1. Clean the tops of the batteries with a solution of baking soda and water, as necessary, to remove corrosion.

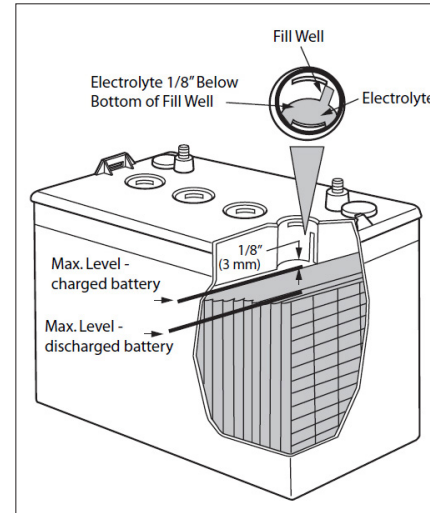
NOTICE

Do not allow cleaning solution to enter battery cells. Serious battery damage can result.

2. Check the fluid level before and after charging.
3. Using a hydrometer, check the specific gravity of the battery fluid in each cell against the readings on the *Hydrometer Chart* (next page.) Consult and ICON dealer if any low readings are found, or if readings vary more than one point between cells.

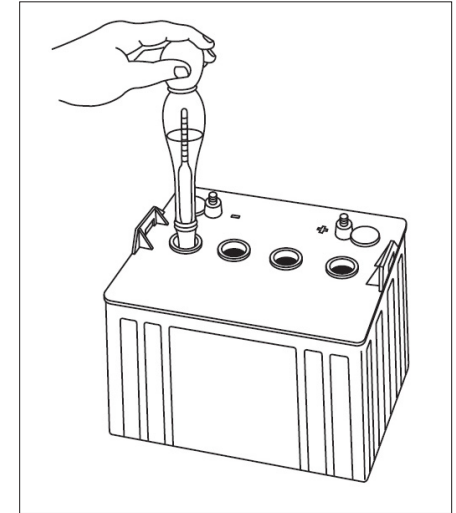
• Before charging:

only add distilled water if fluid is below the top of the plates, and then add just enough to cover plates.



• After charging:

Water maybe required to be added after charging the car.



HYDROMETER CHART

Temperature		Satisfactory Uncorrected Hydrometer Reading
°C	°F	
48.9	120	1.244
43.3	110	1.248
37.8	100	1.252
32.2	90	1.256
26.7	80	1.260
21.1	70	1.264
15.6	60	1.268
10.0	50	1.272
4.4	40	1.276
-1.1	30	1.280