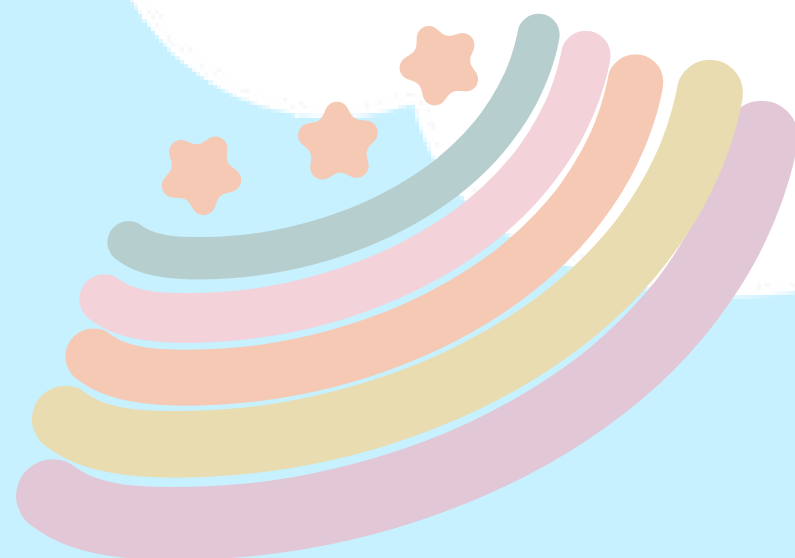


Welcome to
PLAYHOUSE
EARLY EDUCATION AND CARE
KINDERGARTEN HANDBOOK



Introduction

2

Playhouse Early Education and Care supports the access and participation of all children in Our kindergarten programs throughout the year. Kindergarten aims to advance each child's learning to optimise the development of key skills through various learning opportunities. Participation in a kindergarten program gives parents and families, the opportunity to be part of a community who is focused on children's wellbeing and overall development. The kindergarten program provides a place for parents to get to know other families and to share their experiences and information with early childhood professionals.

At Playhouse Early Education and Care we offer a 3- and 4-year-old Kindergarten Program five days a week. Our Structured program runs across the course of the day starting at 8.30am and concluding at 4.30pm. Our program has various structured areas that allow children to comfortably learn, grow and develop in their surrounding environment. We ensure that all children are confident and developmentally ready for the following School Year or 4 year old kinder year. We believe the kinder year is a crucial time to support and prepare our children for the following year ahead. We work in partnerships with our families to accomplish goals and meet each child's personal achievements, celebrating progression along the way. Some of the areas included in our program are as followed

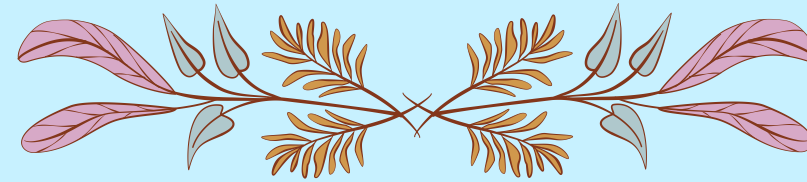


3

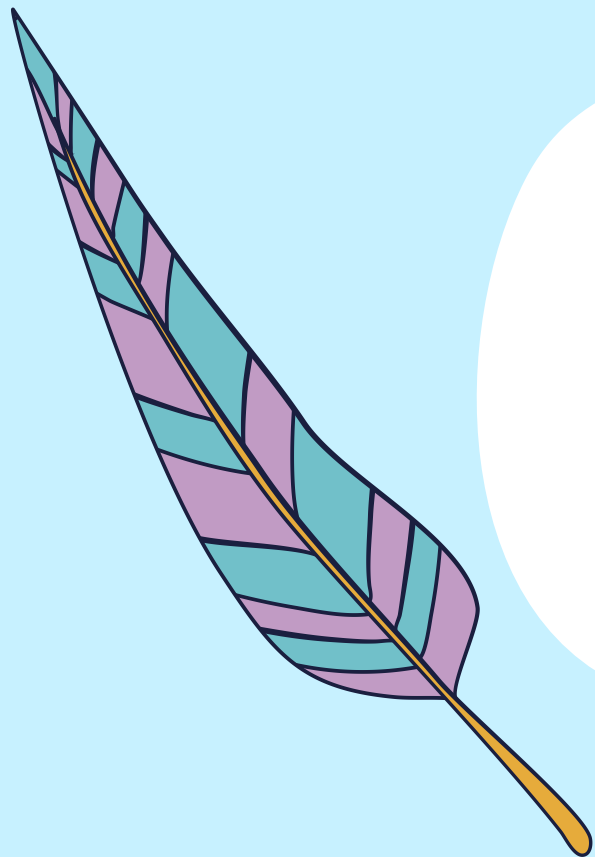
Our Dedicated Teaching Team



Our Educators value, respect, and acknowledge each child's individual capabilities and work with families and early childhood professionals to ensure the best possible outcomes for children's overall Learning and development



Our holistic approach to education combines school readiness programs with learning experiences to foster the social and emotional development of young children. Our integrated indoor/outdoor curriculum is child-directed and engages children in meaningful learning experiences that get them excited about learning, and confident to start their formal education journey.



CC



Joe



Melody





Educational Curriculum

Victorian Early Years Learning Framework



At Playhouse Early Education and care we implement the Victorian Early years Learning Framework, a curriculum that guides early childhood professionals to work together with families to support their children's overall development.

The Framework forms the foundation for ensuring that children in all early childhood education and care settings experience quality teaching and learning. It has a specific emphasis on play-based learning and recognises the importance of communication and language (including early literacy and numeracy) and social and emotional development.

The VEYLDF upholds the image of the child as a rights holder and a competent learner with capacities to learn from birth.

The VEYDLF sets out outcomes and practices to guide early childhood professionals in their work with all families and their young children from birth.

The Framework conveys the highest expectations for all children's learning from birth to five years and through the transitions to school. It communicates these expectations through following five Learning Outcomes:

Children have a strong sense of identity
Children are connected with and contribute to their world
Children have a strong sense of wellbeing
Children are confident and involved learners
Children are effective communicators.

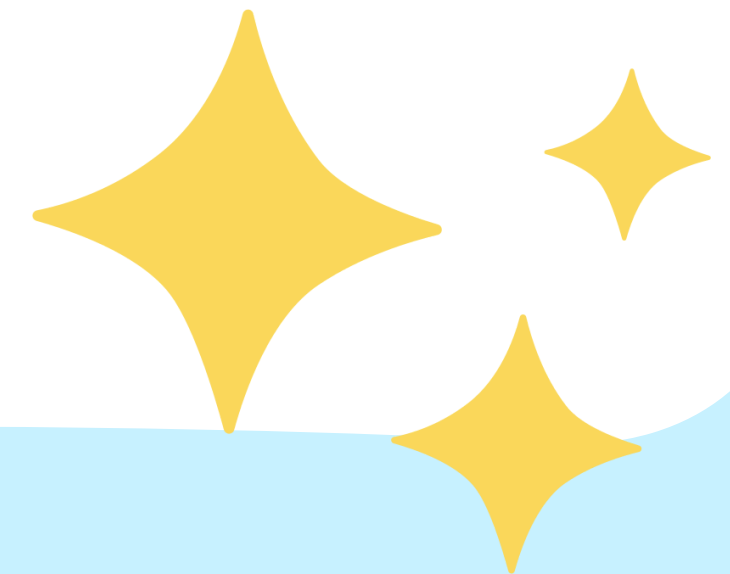




Reach for the Stars!!

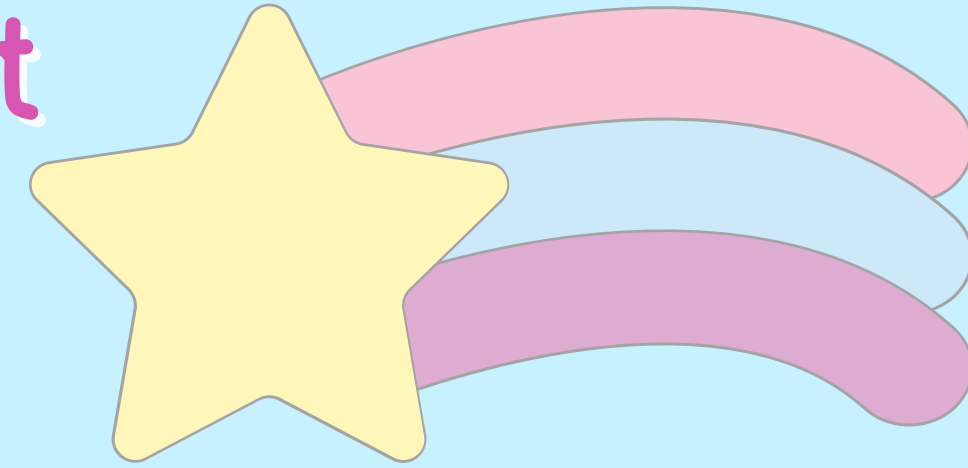
At Playhouse Early Education and Care we support all children to strive to achieve their individual goals and milestones.
Our teaching team supports and extends on children's individual capabilities.

We support and encourage all children to develop the skills and knowledge to ensure that they leave the Kindergarten year with the tools to succeed in life including confidence, resilience and the independence needed.



6

Our Extra Curricular Specialist Program's Include



Yoga and
Mindfulness



Art and
Creativity
Class



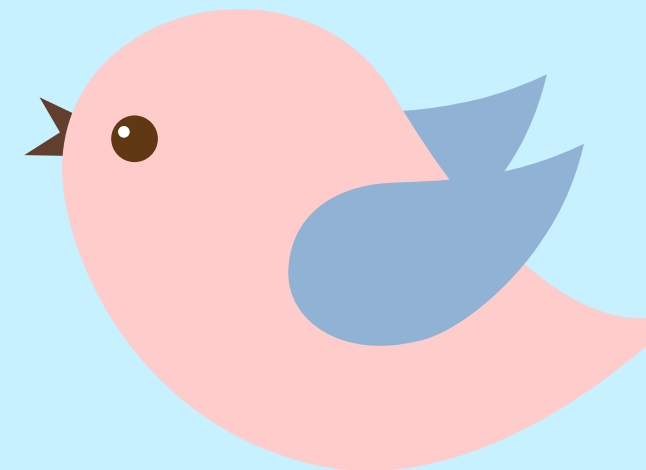
Language
Lessons
(Mandarin Class)



Music and
Movement



Sports
Session



School Readiness

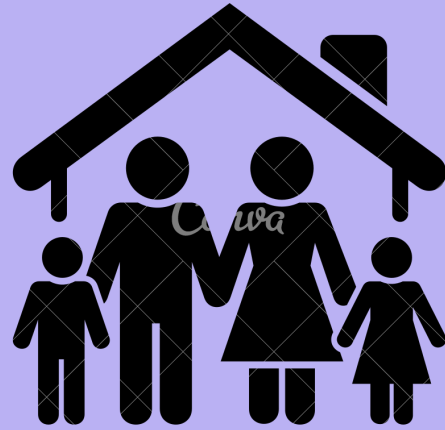
As part of the 4 year old program we focus on School Readiness. School readiness is an important process in Preparation for a smooth comfortable transition from Kinder to school life.

This includes working with the local schools and community. We also offer a school readiness program in our fourth term in the kinder room. This includes preparation for school including bringing along their own lunch boxes to Kinder with their lunch to prepare them for meal times at school. (Healthy Lunch Boxes encouraged) We also have Parent teacher interviews twice a year at the service with our qualified Kinder teachers. This allows families and educators to work together and to communicate each child's development to ensure school readiness for each child. This is a good time to discuss a 2nd year of Kinder if Teachers feel this may be beneficial to the child.

Our Kinder teacher will also be available to make a time to talk throughout the year with families to discuss all your child's needs and progress.



We Value Partnerships with our Families



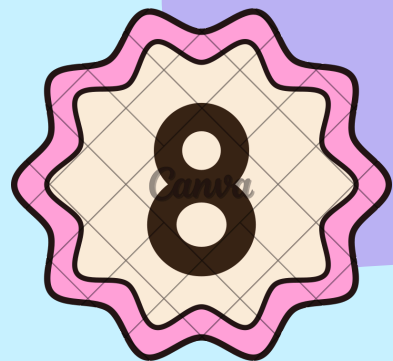
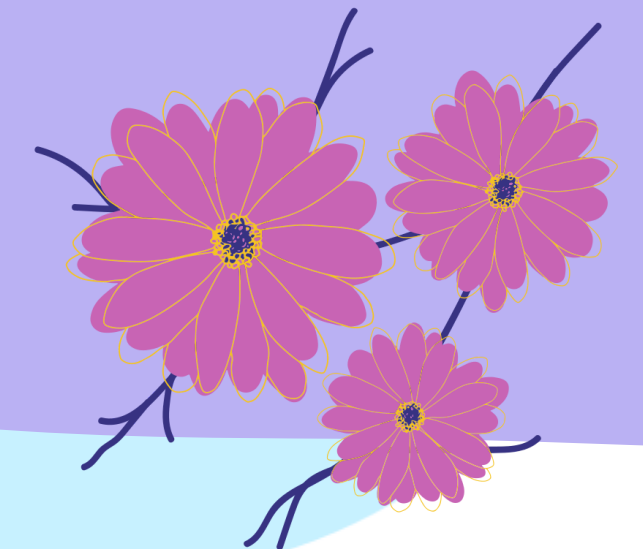
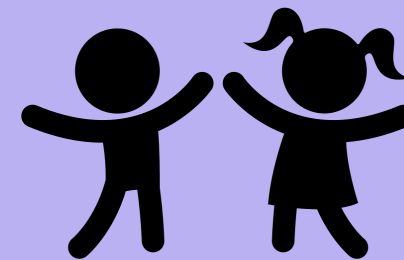
Partnerships with families

Building strong partnerships with families is essential in early childhood education and care.

These partnerships are characterized by respectful relationships, open communication, and shared decision making.

In genuine partnerships, families and educators:

- value each other's knowledge of each child
- value each other's roles in each child's life
- trust each other • communicate freely and respectfully with each other
- share insights and perspectives about each child and engage in shared decision making.





OWNA- Our Online Platform



OWNA is the services online program used for a variety of service requirements and service compliance. Some of these areas including family engagement, children's attendances, family accounts and children's learning documentation and developmental progression

OWNA invites parents, educators and children to play a part in each child's individual developmental learning journey



- Improve's understanding of each child's interests and abilities so they receive the best support
- supports family engagement and strengthens relationships and communication
- share's videos, photos and text capturing children's learning and development
- creates an accessible portfolio of your child's learning and development
- captures children's individual learning and development
- captures family culture and heritage
- involve's the children in their portfolio
- Allows Families to interact easily and effectively through iPhone, Android and tablets
- Families can add their own stories or leave comments and feedback for children and our teaching team through the app
- Viewing of Daily meals and Routines
- Viewing of Rosters and Teaching teams

Kindergarten Fees



Free Kinder at long day care centres

Families with children enrolled in Three and Four-Year-Old Kindergarten programs, including Pre-Prep at participating long day care centres will receive an annual fee offset.

Families can access a funded kinder program and Free Kinder at only one service at any one time. Services will contact families to confirm this.

Sessional Kindergarten fees and long day fees are different and vary due to the hours offered across the day and the programs of each individual service.

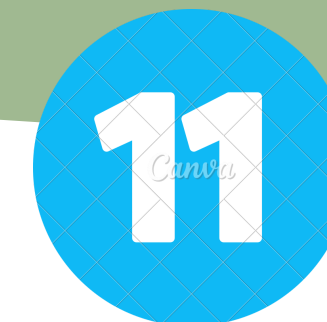
At Playhouse Early Education and Care Families are credited per week on to their accounts for the funded kindergarten subsidy. This is excluding school holiday periods where normal CCS rates apply. This is based on each individual family and the weekly fees they pay through your CCS benefits and entitlements

All meals, nappies, wipes, and sunscreen are provided and parents are able to access the long day care hours as they wish all year round.

Please keep in mind that all External Kindergartens close throughout the holiday periods and have set drop off and collection times, so parents will need to consider this when deciding to enrol at an external Kinder. As we are long day care our service operates as normal throughout the year and on school holidays.

What to Bring to Kinder

1. Labelled Bag (reasonable size to accommodate for belongings)
2. Spare change of clothing (including socks and underwear)
3. Bucket or Legionaries hat (to keep at Kinder)
4. Jacket and beanie for Cooler Weather
5. No Singlets as per our sun smart policy (Sun safety)
6. Closed Toe Shoes (No Thongs or slippers)



We're Here to Help!

Playhouse Early Education and Care

70 Tram Road Doncaster 3108

9018 4070 office@playhouseeec.com.au

