

GRAND AMERICAN TOURS PRESENTS  
**ALASKA CRUISE, LAND & RAIL**  
 WITH PRINCESS CRUISES® ON THE DISCOVERY PRINCESS®  
 11 DAYS / 10 NIGHTS ~ AUGUST 11 - 21, 2027

DAY	PORT	ARRIVE	DEPART
1	<b>Anchorage</b> - Arrive in Anchorage and get settled in your hotel for an overnight stay. You might enjoy getting out to see the shops, restaurants and cultural attractions of this surprisingly metropolitan city.		
2	<b>Mt. McKinley Princess Wilderness Lodge</b> - Board a motorcoach for your journey along the George Parks Highway to the Mt. McKinley Princess Wilderness Lodge. You may catch your first views of incredible Denali along the way. Sit and gaze at the majesty of "The Great One" from the lodge's treehouse designed and built by Pete Nelson of Animal Planet's Treehouse Masters. You can choose optional excursions or simply enjoy the grounds of your lovely lodge.		
3	<b>Denali Princess Wilderness Lodge</b> - This morning, depart on another scenic motorcoach drive to the Denali Princess Wilderness Lodge. Explore Denali National Park on a Natural History Tour, watching for glimpses of Denali as well as Denali's "Big Five"; moose, caribou, bears, wolves and Dall sheep. Be sure to check out Fannie Q's Saloon, named after a famed local homesteader, or sit outside at a fireside patio.		
4	<b>Whittier</b> - Enjoy the scenic rail journey through some of the best wilderness in the Great Land on our exclusive Direct-to-the-Wilderness rail service. Once in Whittier, you'll step from the train onto your ship for the beginning of your unforgettable cruise.		
4	<b>Anchorage (Whittier), Alaska</b>		<b>8:30 pm</b>
5	<b>Hubbard Glacier, Alaska (Scenic Cruising)</b>	<b>3:00 pm</b>	<b>8:00 pm</b>
6	<b>Glacier Bay National Park, Alaska (Scenic Cruising)</b>	<b>9:15 am</b>	<b>6:15 pm</b>
7	<b>Skagway, Alaska</b>	<b>6:00 am</b>	<b>8:30 pm</b>
8	<b>Juneau, Alaska</b>	<b>6:30 am</b>	<b>4:15 pm</b>
9	<b>Ketchikan, Alaska</b>	<b>10:00 am</b>	<b>5:00 pm</b>
10	<b>At Sea</b>		
11	<b>Vancouver, British Columbia</b>	<b>7:30 am</b>	

*Itinerary is subject to change.*

Inside Cabin Category	IC	\$3,627	Balcony Cabin Category	BB	\$5,597
Balcony Cabin Category	BC	\$5,547			

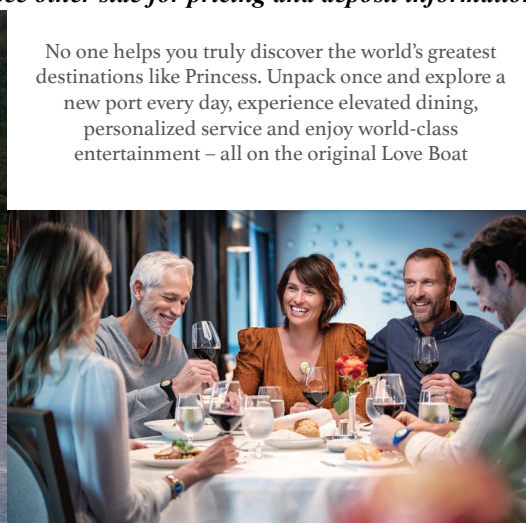
**1 FREE FOR EVERY 9 PAYING PASSENGERS, THE 10<sup>TH</sup> GOES FREE!**

Rates are per person double occupancy and include cruise, port charges and government fees.  
*(Airfare and transfers are additional. Please call for rates from your area.) Government imposed taxes and fees are subject to change and Princess Cruises reserves the right to collect any increases in effect at the time of sailing even if the fare has already been paid in full.*

**PASSPORT REQUIRED**

*See other side for pricing and deposit information*

No one helps you truly discover the world's greatest destinations like Princess. Unpack once and explore a new port every day, experience elevated dining, personalized service and enjoy world-class entertainment – all on the original Love Boat



**DEPOSIT POLICY:** An initial deposit of \$350 per person double occupancy or \$700 per person single occupancy is required in order to secure reservations and assign cabins. Final payment is due by April 13, 2027. **These are the best rates around! Those who book early get the best prices and the best cabin locations. [MAKE A RESERVATION](http://www.grandamericantours.com) at [grandamericantours.com](http://grandamericantours.com).**

*Itinerary, Perks, and Prices are subject to change.*

GRAND AMERICAN TOURS ~ P.O. BOX 50 ~ MORTON, PA 19070 ~  
1-800-423-0247 ~ [www.grandamericantours.com](http://www.grandamericantours.com)

**IF YOU BOOK BY SEPTEMBER 1, 2026**

**ONLY \$100 pp DEPOSIT REQUIRED  
FOR DOUBLE OCCUPANCY**

*\*subject to capacity control\**

Call for details ~ 1-800-423-0247

**PRINCESS PLUS**

**Plus Beverage Package**

(drinks up to \$15 each)

**MedallionNet® Max Wi-Fi**

(1 device per person)

**Prepaid Gratuities (crew appreciation)**

**Casual Dining Meals (4 per guest)**

**OceanNow® delivery**

**Room Service Delivery**

*Offer applies to guests 1 & 2 only.*

*Offer is capacity controlled and subject to change.*

*Please call for details ~ 1-800-423-0247*