



# BIT-EPO



## • CARTRIDGE SIZES

400ml | 600ml

A two component chemical anchoring injection system in 1:1 ratio. A formulation derived from pure epoxy with very high bond strength, developed principally to anchor threaded rods and rebar into concrete. Used for high performance structural applications where loading is critical.

## • CHARACTERISTICS

- Suitable for high loads featuring large diameters and deep embedments.
- Longer working times make it suitable for large holes, and high temperatures.
- No shrinkage, good for large diameter fixings.
- Use in wet or flooded environments and fixing holes, or underwater.
- High durability, resistance to chemicals.
- Used for diamond drilled holes.
- Solvent free resin.
- Fixings in concrete, wood, or other high strength materials.

## • APPROVALS / CERTIFICATIONS / TESTING

ETA TR023 Post Installed Rebar Installations.  
 CE Certified 1404-CPR-0000 - ZAG Slovenia  
 R240 Fire Test Report SIGGMA  
 LEED tested 2009 EQ c4.1 SCAQMD rule 1168 (2005.)  
 VOC A+ Rating (Volatile Organic Content)

## • PHYSICAL PROPERTIES

- Mixed Colour - Red or Grey
- Density - 1.7 kg/m<sup>2</sup>
- Compressive Strength - 95 N/mm<sup>2</sup> (EN ISO 604)



## • TYPICAL TENSILE PERFORMANCE - STANDARD EMBEDMENT DEPTH

Concrete, C20/25, 5.8 Grade Studding						
Size	Recommended Load (kN)		Spacing (S <sub>cr,N</sub> ) (mm)	Drill Hole Ø (mm)	Fixing Hole Ø (mm)	Setting Depth (mm)
	Tension (N <sub>rec</sub> )	Shear (V <sub>rec</sub> )				
M8	9.07	5.14	160	10	9	80
M10	14.36	8.57	200	12	12	90
M12	20.86	12.00	240	14	14	110
M16	38.86	22.29	320	18	18	125
M20	43.07	34.86	400	22	22	170
M24	59.24	50.29	480	28	26	210
M30	98.74	81.43	600	35	32	280

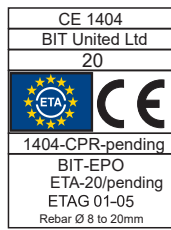


# BIT-EPO

## • WORKING AND HARDENING TIMES

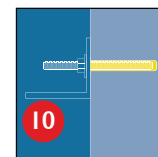
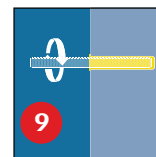
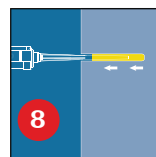
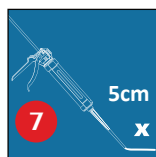
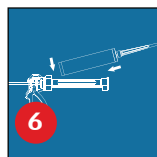
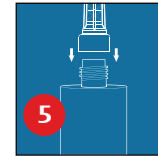
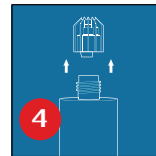
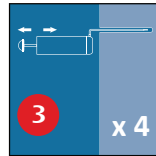
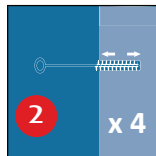
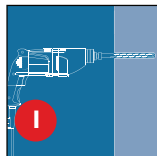
Base Material Temperature	5°C	15°C	25°C	35°C	40°C
Gel Working Time	100'	60'	40'	25'	20'
Curing Time Dry Concrete	40 hrs	24 hrs	11 hrs	9 hrs	8 hrs
Curing Time Wet Concrete	x 2	x 2	x 2	x 2	x 2

## • APPROVALS



## • INSTALLATION

Solid substrates



Not for use in hollow wall applications.

For further information, please refer to the Technical Data Sheet.

## • STORAGE / SHELF

This product should be stored between +5°C & +25°C.

Avoid Direct Sunlight

The Shelf life of the product is 24 months from the manufacture date.