

METER DIAGRAM



Meter Number

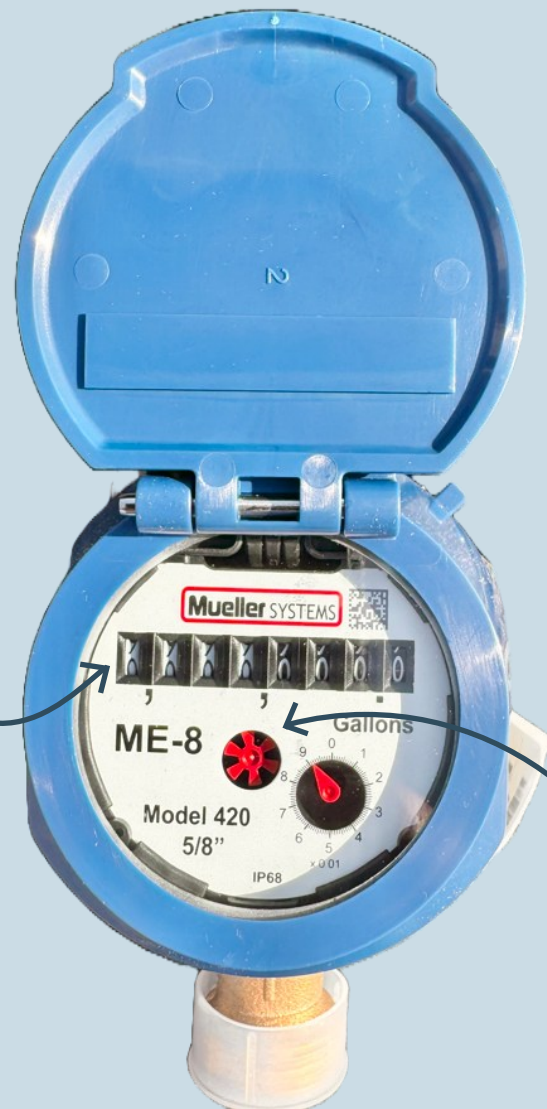
The Meter Number is located at the top of the meter lid.

Odometer

Read numbers from left to right.

The odometer measures water usage in tenths of a gallon. Each full dial rotation equals 0.1 gallon.

For billing, usage is rounded to the nearest 10 gallons.



Low Flow Indicator

If this dial is moving, water is passing through the meter.