

COLLABORATIVE ARTIST DUO

CAZORLA + SALEME



# BIO

Aunt and niece Latinx Cazorla and Saleme are two queer artists of color established in New York since the mid 90's. As a painter and sculptor, they joined forces in 2010 to create compelling artworks investigating critical social issues, focusing on migration.

Their collaboration has resulted in diverse work, utilizing various mediums and materials to produce vibrant and fluorescent color palettes. Despite the whimsical appearance of their art, Cazorla + Saleme tackle challenging topics, bringing attention to social issues through their creativity.

The duo has achieved recognition on both local and international levels with an impressive exhibition record. They have received awards and grants from prestigious institutions such as the National Association of Latino Arts and Cultures, the Puffin Foundation, UNIQLO/NYC Parks, and El Museo del Barrio. Additionally, they have been commissioned for public art pieces by notable organizations, including the Garment District Alliance, the Department of Transportation of NYC, the John Michael Kohler Art Center, and the NYC Health + Hospitals Arts in Medicine.

Recent accolades include the Newark Artist Accelerator grant from Project for Empty Space for two consecutive years, 2022 and 2023 (supported by The Andy Warhol Foundation for the Visual Arts Regional Regranting Program), the City of Newark Creative Catalyst Fund Grant for the years 2021 and 2022, and public art commissions from Audible's Newark Artist Collaboration, the City Artist Corps Grant/NYFA, Art Bridge Projects Grant/NYC Cultural Affairs Grant, and 4Corners Public Art Initiatives in Downtown Newark, NJ. They were also invited to participate in the 19th Asian Art Biennale Bangladesh in 2022.

Cazorla + Saleme have served as artists-in-residence at esteemed institutions such as Vermont Studio Center, ChaShaMA NYC, and the Children's Museum of Manhattan. Their work has been featured in numerous media outlets, including NJ PBS, State of The Arts, TimeOut NYC, The New York Times, Artdaily.org, Wescover.com, Bloomberg Connects, Secret NYC, GothamToGo, Fox 5, Newark Arts Journal, Galerie Magazine, RYL Magazine, Univision News, Remezcla, EFE Spanish international news agency, El Diario-La Prensa, Univision 41, New York Daily News, Riverdale Press, CUNY TV, News 12 The Bronx, and ArtNet News.





# ARTIST STATEMENT

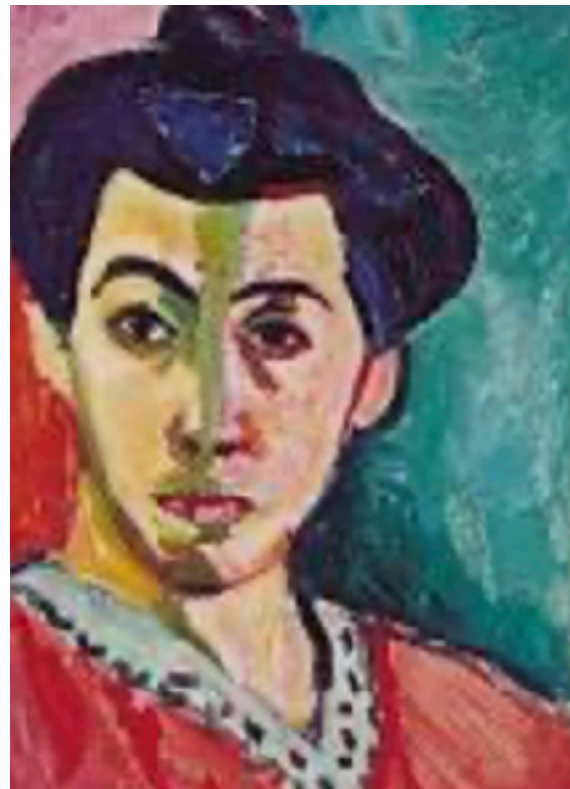
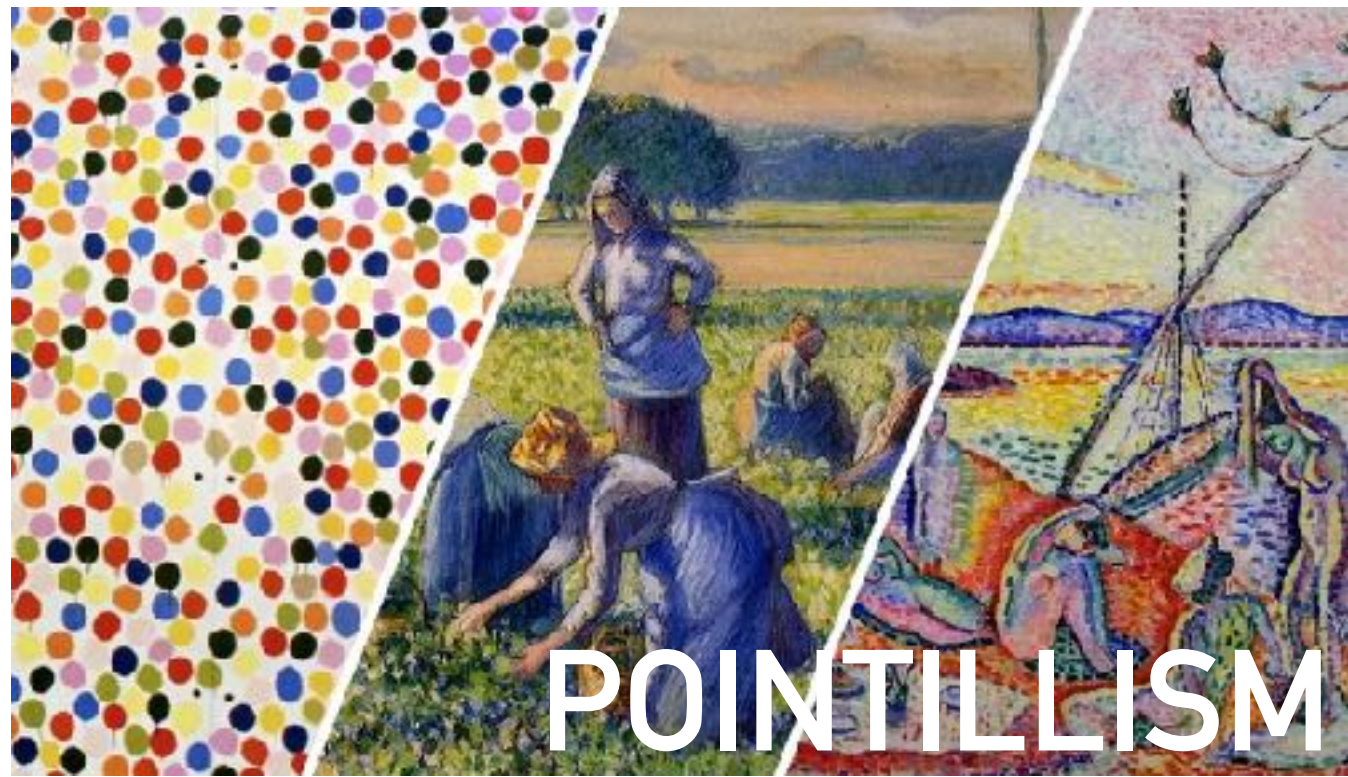
*We are an aunt and niece collaborative artist duo. Born in Lima but grew up in Caracas before moving to New York City in the mid-90s.*

*Our interactive public art interventions range from semi-figurative to pattern-like abstractions, combining form with meaning. We create chromatic intense pieces influenced by the light and the lushness of the Americas' southern hemisphere. They are intricate compositions that don't attempt an exact depiction but instead indulge or involve the viewers with a warm, bright, and positivist way of connecting, letting go, or foster hopeful imaginings.*

*We aim to break boundaries, using our work to address and transcend societal barriers.*



# INFLUENCES



FAUVISM



ROCOCO



POP ART



MODERN ARCHITECTURE



TEXTILES

# NATURE



# SEQUENCES

- ▶ DRAWING
- ▶ PAINTING
- ▶ SCULPTING
- ▶ COMPUTER RENDERING
- ▶ CNC ROUTING CUTTING
- ▶ VINYL APPLICATIONS





# PARTNERSHIPS

- ▶ NYC HEALTH & HOSPITALS
- ▶ NYC PARKS & RECREATION
- ▶ NYC GARMENT DISTRICT ALLIANCE  
& NYC DOT (Department of Transportation)
- ▶ NYC HOUSING AUTHORITY
- ▶ PUBLIC LIBRARIES
- ▶ PUBLIC SPACES (STREETS)
- ▶ CULTURAL NON-PROFITS
- ▶ SMALL BUSINESSES





I AM HERE BECAUSE  
I CARE ABOUT YOU  
2022





## I AM HERE BECAUSE I CARE ABOUT YOU, 2022 BARUCH HOUSES, NYCHA, LES, NEW YORK

Digital painting Mesh Vinyl, Reinforced Webbing | 108" w. x 84" h. /12 panels  
THIS PHOTOGRAPH IS A DETAIL OF 12 PANELS INSTALLED ALONG THE BARUCH DRIVE

**Nancy Saleme** was the leading artist for the ArtBridge project.

The New York City Housing Authority (NYCHA) is home to 400,000 lower income New Yorkers. In 2019 ArtBridge launched ***Bringing the Divide***, a series of artist fellowships at NYCHA developments, in which artists engage with NYCHA residents over several months, collaborating to design artworks that amplify the diverse voices of these residents- their talents, joys, histories, cultures, etc. The resulting artworks are installed at hundreds of feet long, on construction fencing and scaffolding sheds that surround each participating development.

### ART STATEMENT

Nancy Saleme's I am Here Because I Care About You, transformed photographs of flowers local to the Baruch Houses into vibrant digital paintings punctuated by graphic floral patterns. Her palette transitions from colors associated with sunrise to those of sunset to trace the journey of a complete day. Responding directly to a comment made during one of her workshops, Saleme designed this piece to bring joy to the community, as one resident shared, "I would like to see something that makes me smile, because there is enough sadness in the world."



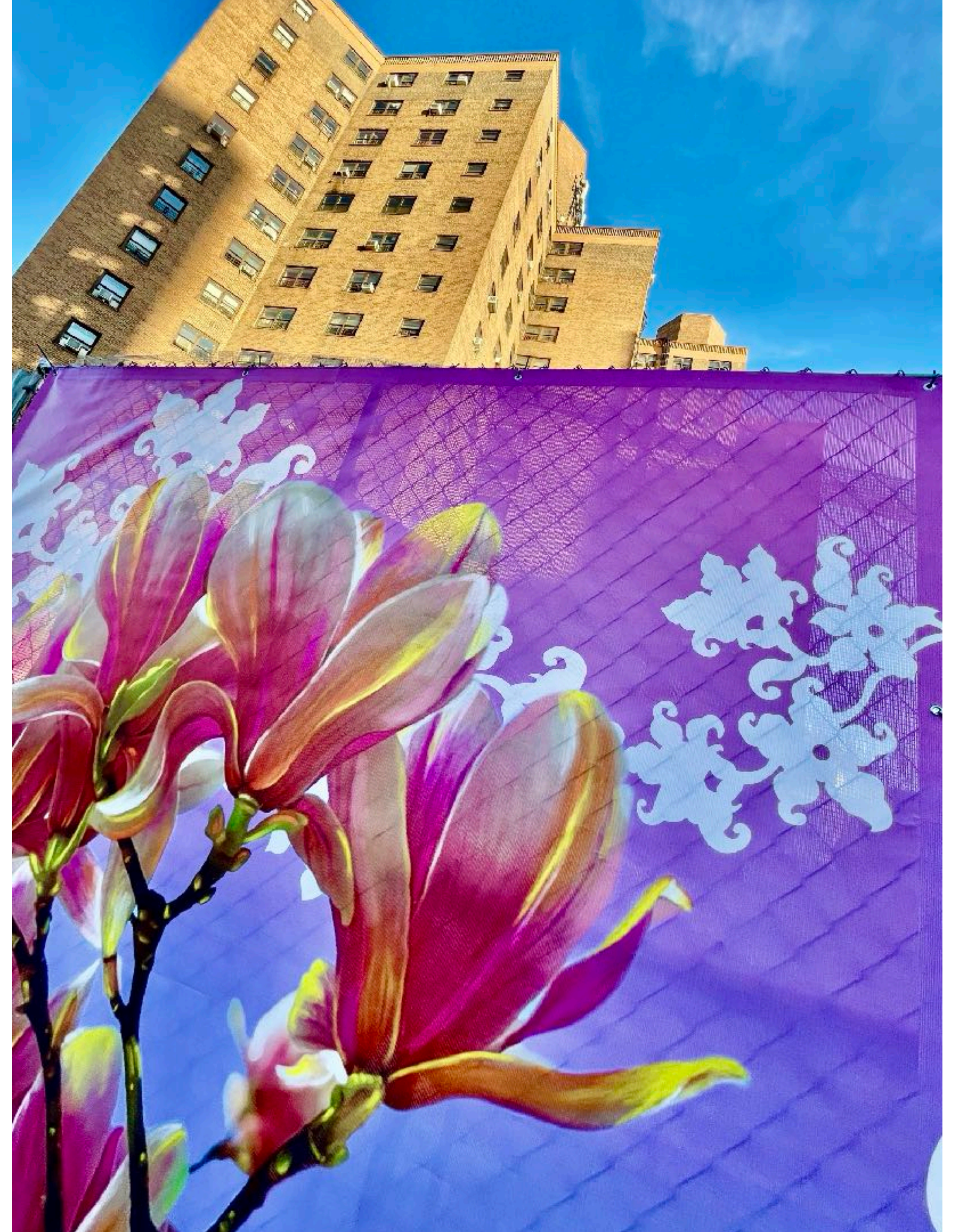
























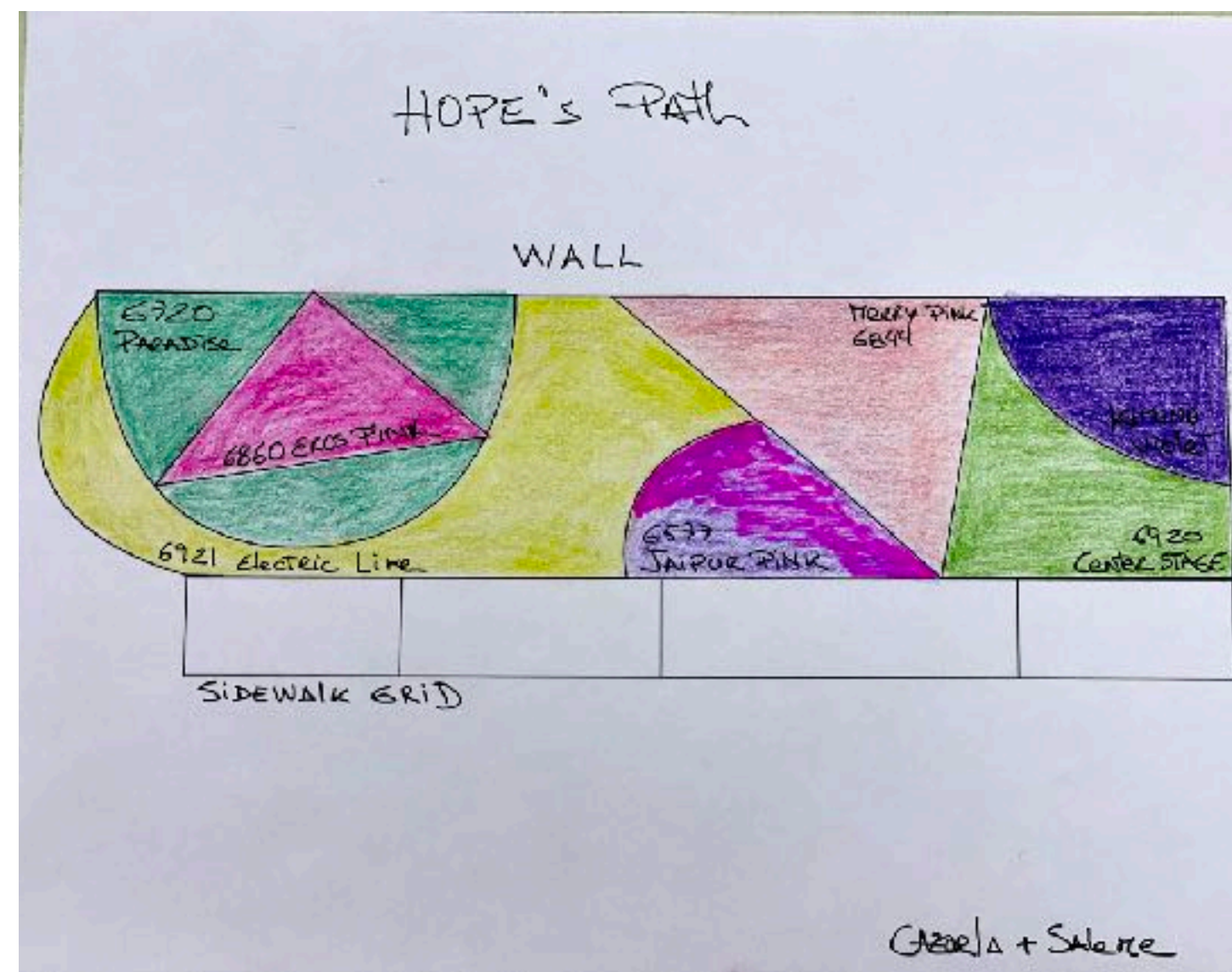
# HOPE

2021-22

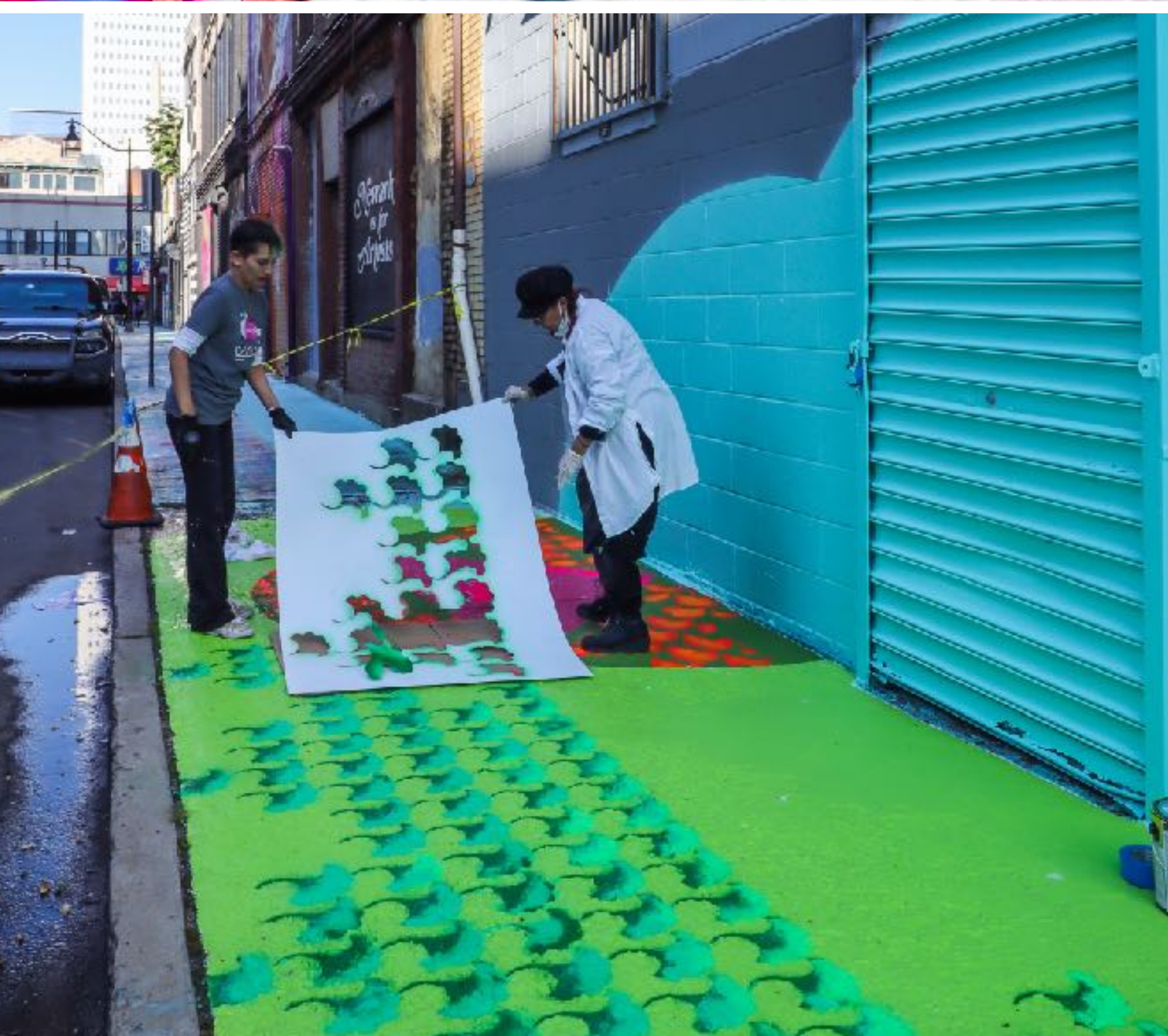




# PROCESS

















## HOPE, 2021-22 - TREAT PLACE, NEWARK

THIS ARTWORK WAS CONCEPTUALIZED IN 2020 WHEN “HOPE WAS ALL WE HAD.” THE ARTWORK WAS MADE POSSIBLE BY CITY OF NEWARK’S CREATIVE CATALYST FUND AND 4CORNERS PUBLIC ARTS.









# SPECTRUM OF JOY

## 2022







## SPECTRUM OF JOY, 2022, NEWARK PUBLIC LIBRARY

A PERMANENT ENVIRONMENTAL INSTALLATION FOR NEWARK PUBLIC LIBRARY. A PROJECT WITH NEWARK ARTIST COLLABORATION BY AUDIBLE



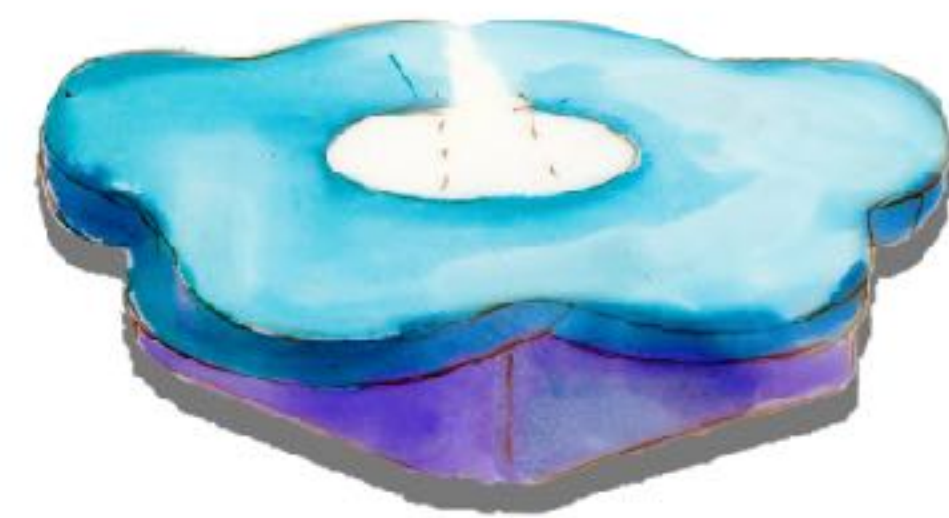
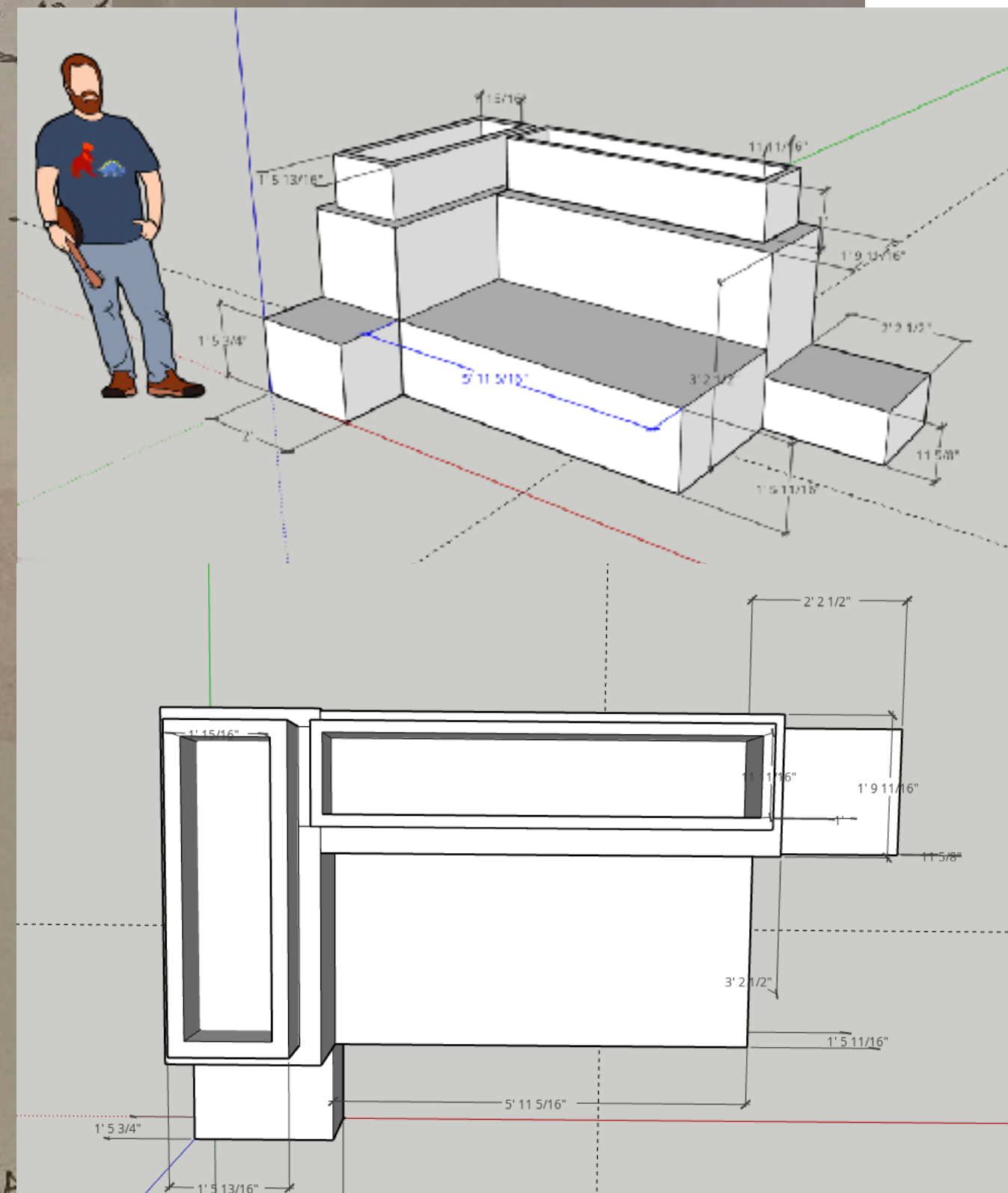
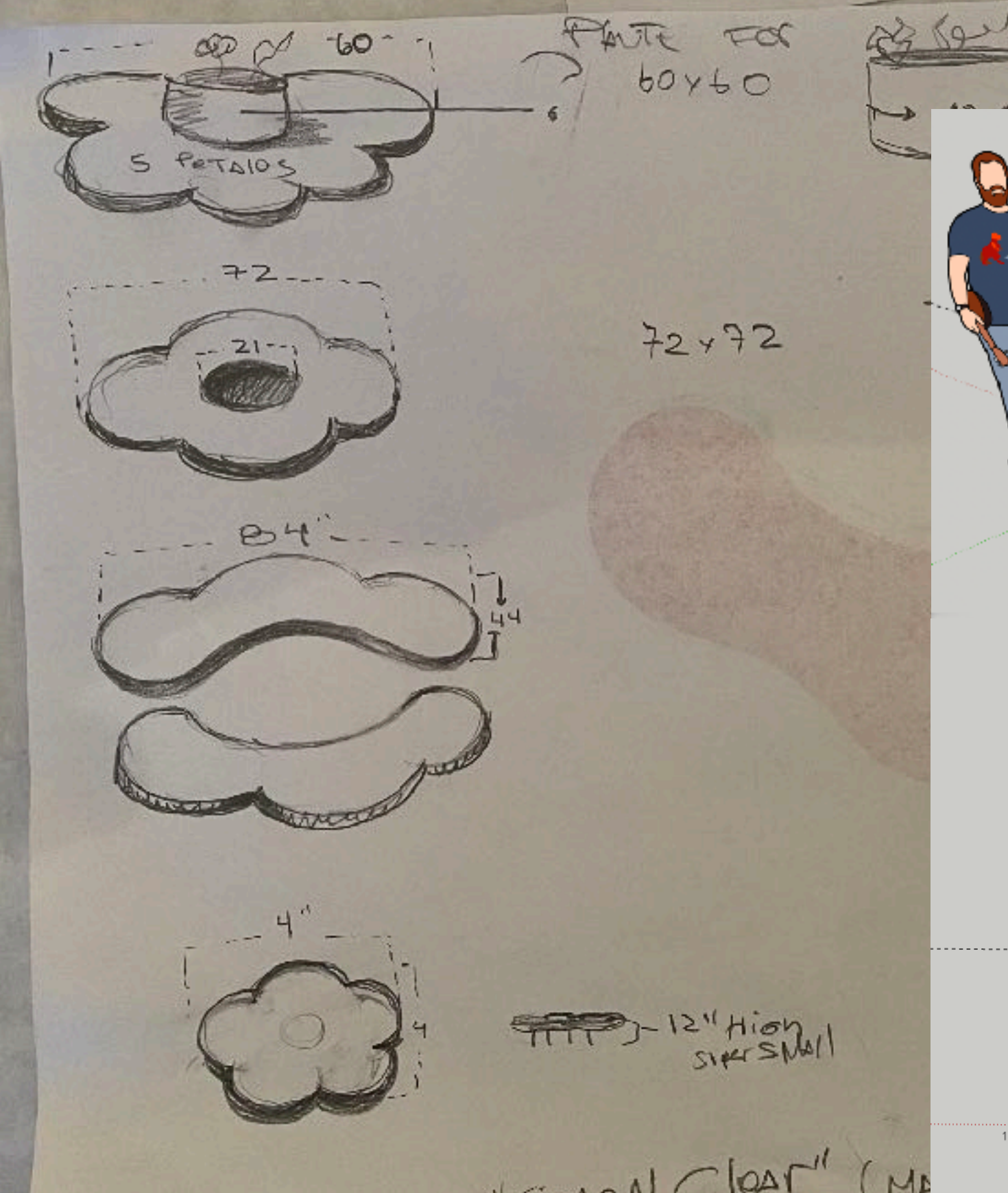
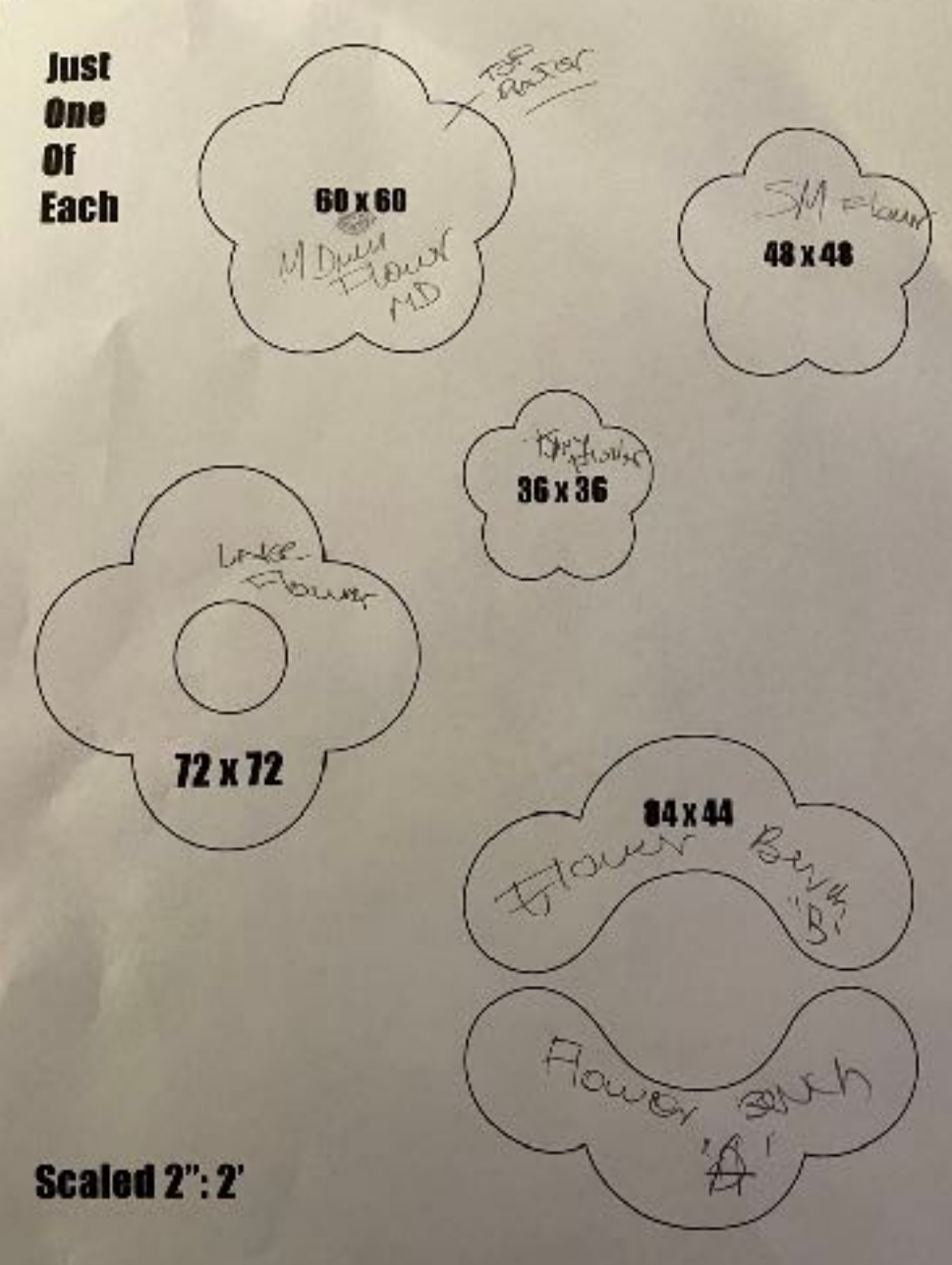
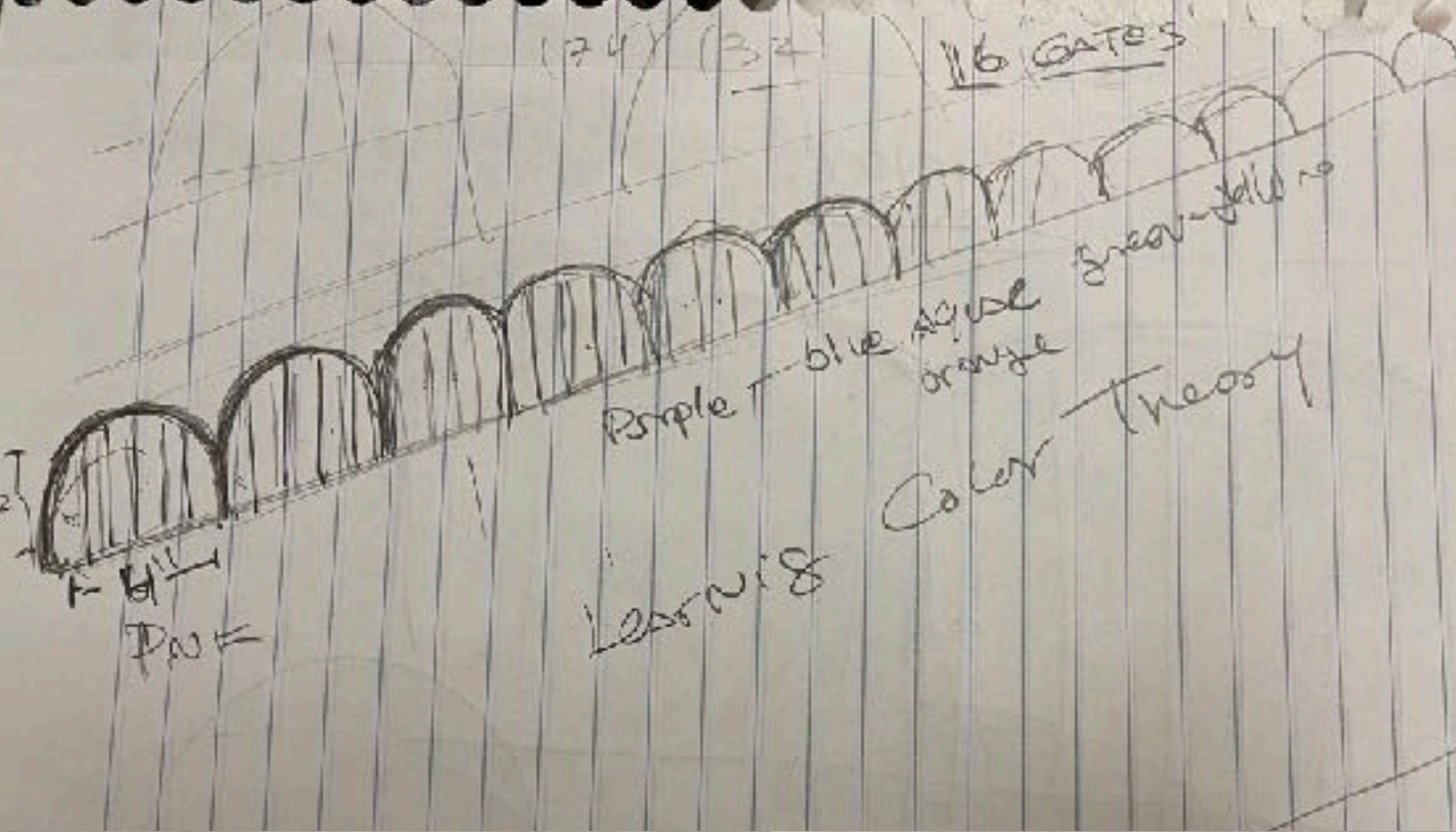
A NEW COURTYARD FOR THE EXCEPTIONAL YOUNG MINDS OF THE NEWARK PUBLIC LIBRARY IS FLOURISHING. DESIGNED FOR READING, PLAYING, THINKING, AND DREAMING, THE INSTALLATION IS DEDICATED TO NEWARK'S COMMUNITY AND BEYOND. AS YOU ENTER, A ROYAL CARPET MAKES YOU FEEL SPECIAL SOON AFTER, A FLASHY ORANGE SOFA-BENCH CRADLES A NUMBER OF VISITORS AT ONCE. FIVE OTHER BLOOM-SEATS ARE HAPPILY SPREAD AROUND. ANIMATED CLOUDS ARE GREETING AT THE ENTRANCE. THE CHROMATIC ARCHED FENCE LEADS THE WAY TO TAKE A FLY. AT THE END OF THE PASSAGE, A PAIR OF WINGS ARE WAITING TO HELP YOU CONTINUE YOUR JOURNEY.



- Rope Lights around the shapes
- Outdoor Lighting LED Lawn Lamp Landscape Lights Waterproof behind all fences

© Cazoria + Salame 2021



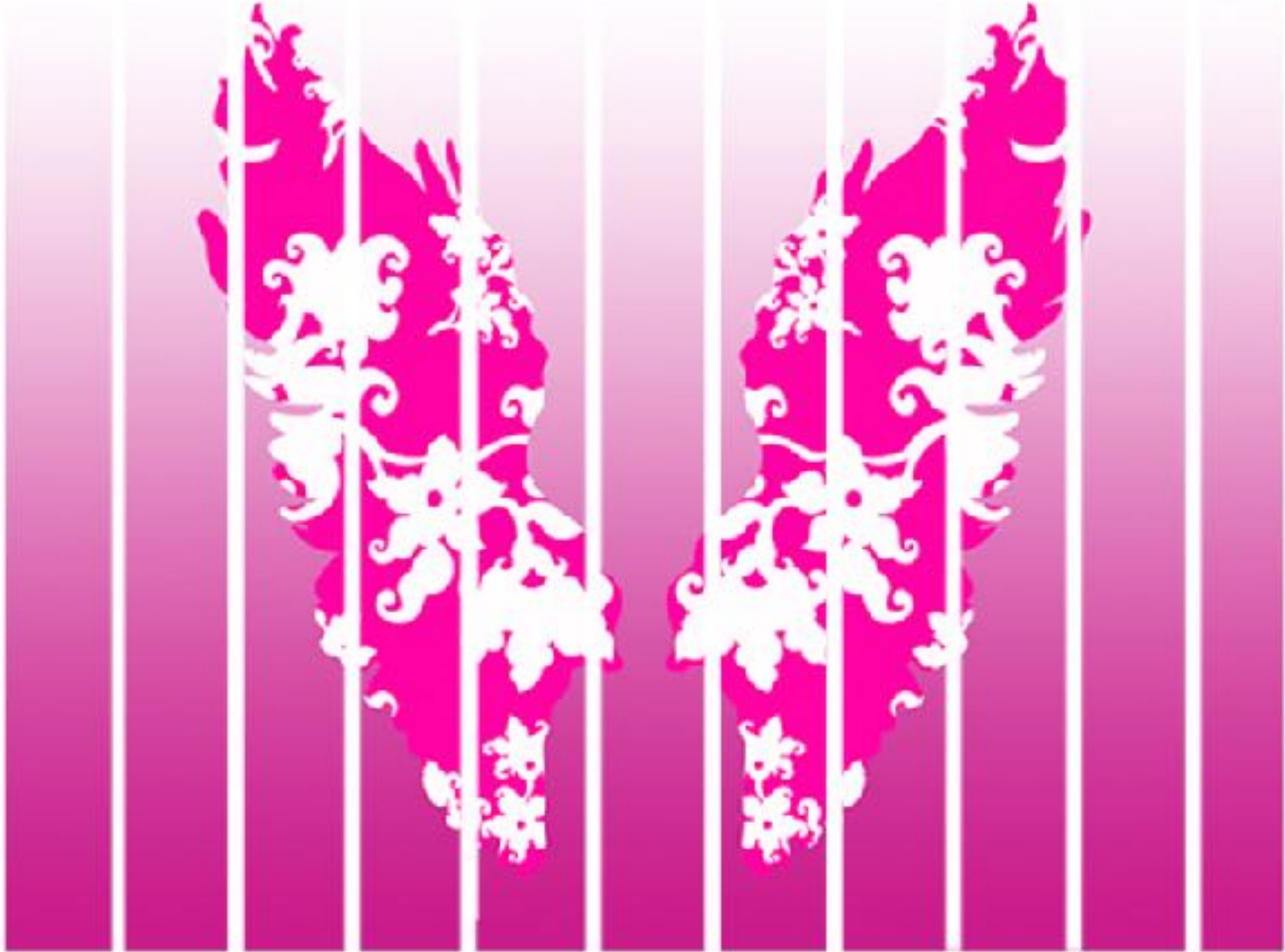
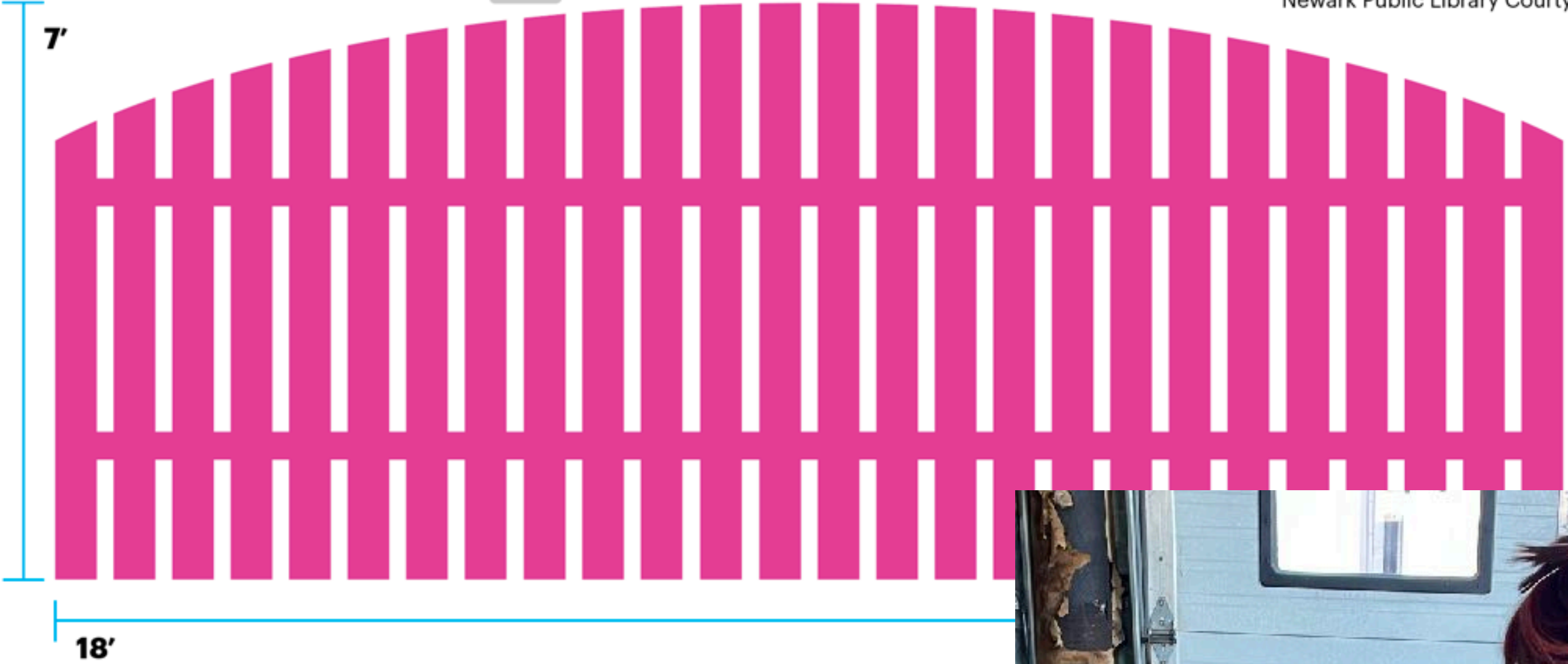




One arch - 18 feet long by 7 feet high | • 6" cedarwood | • primed on white for weather | • painted on one shade of pink

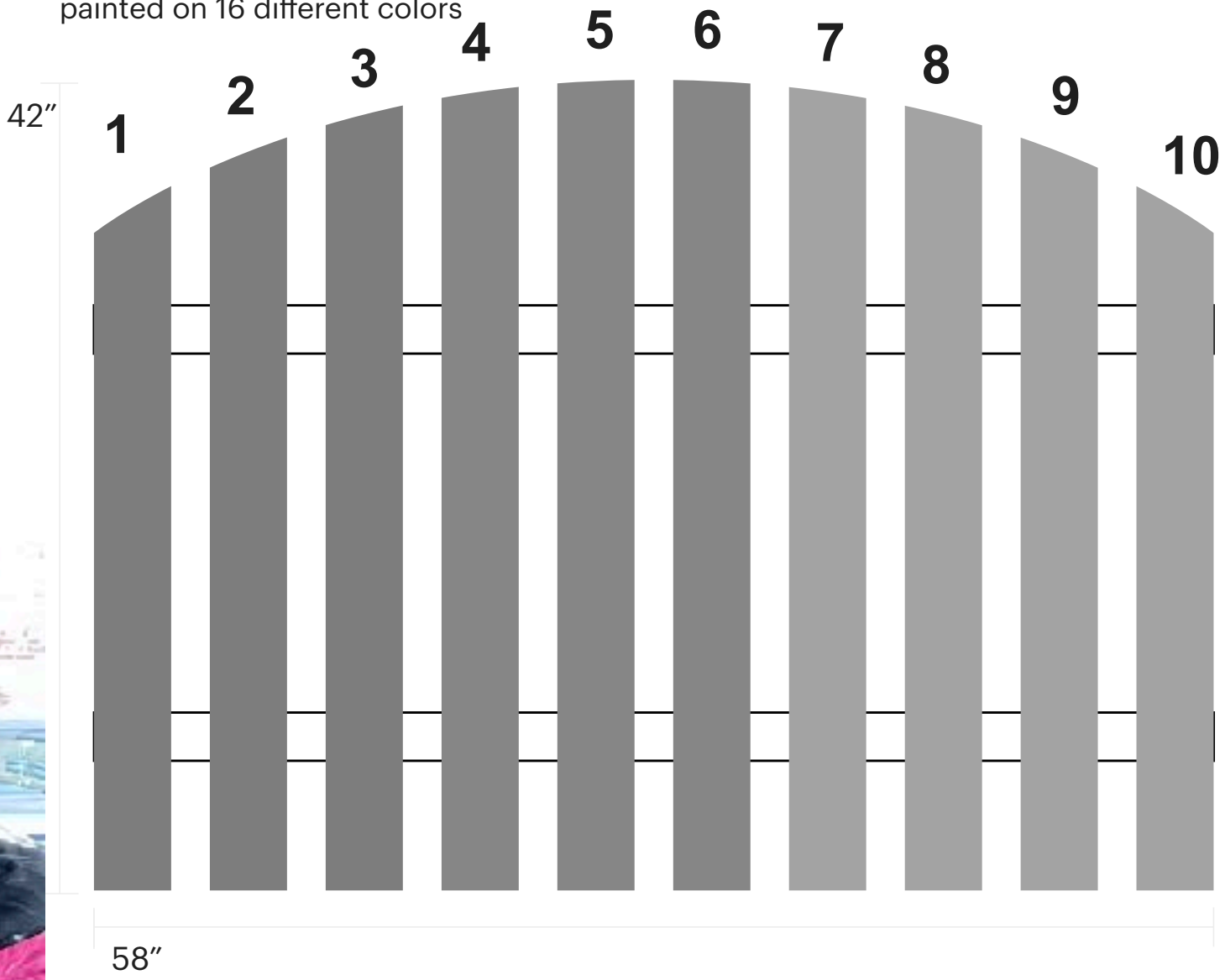
X: 5.36 ft  
Y: 0.31 ft

CAZORLA + SALEME  
Newark Public Library Courtyard

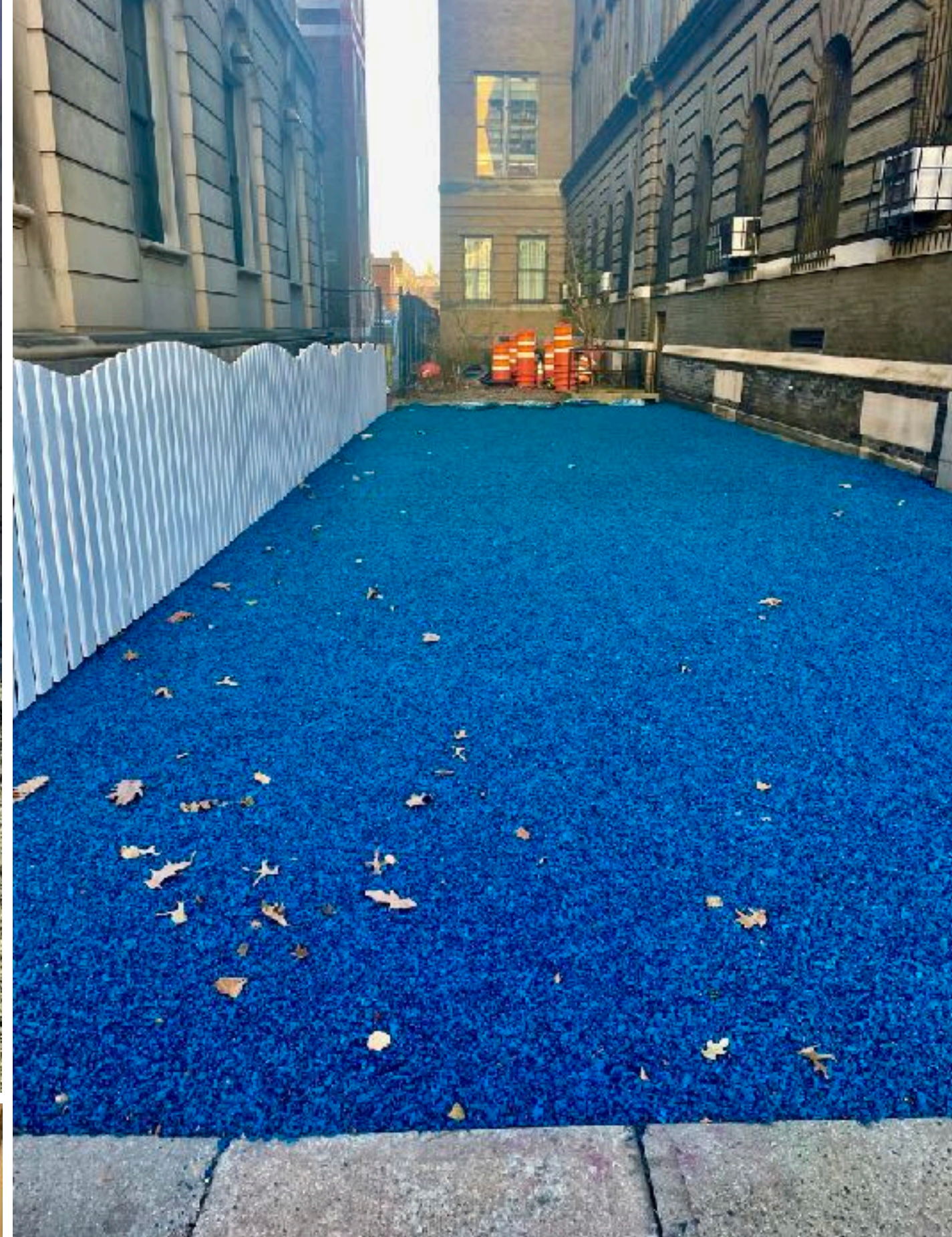


CAZORLA + SALEME  
Newark Public Library Courtyard

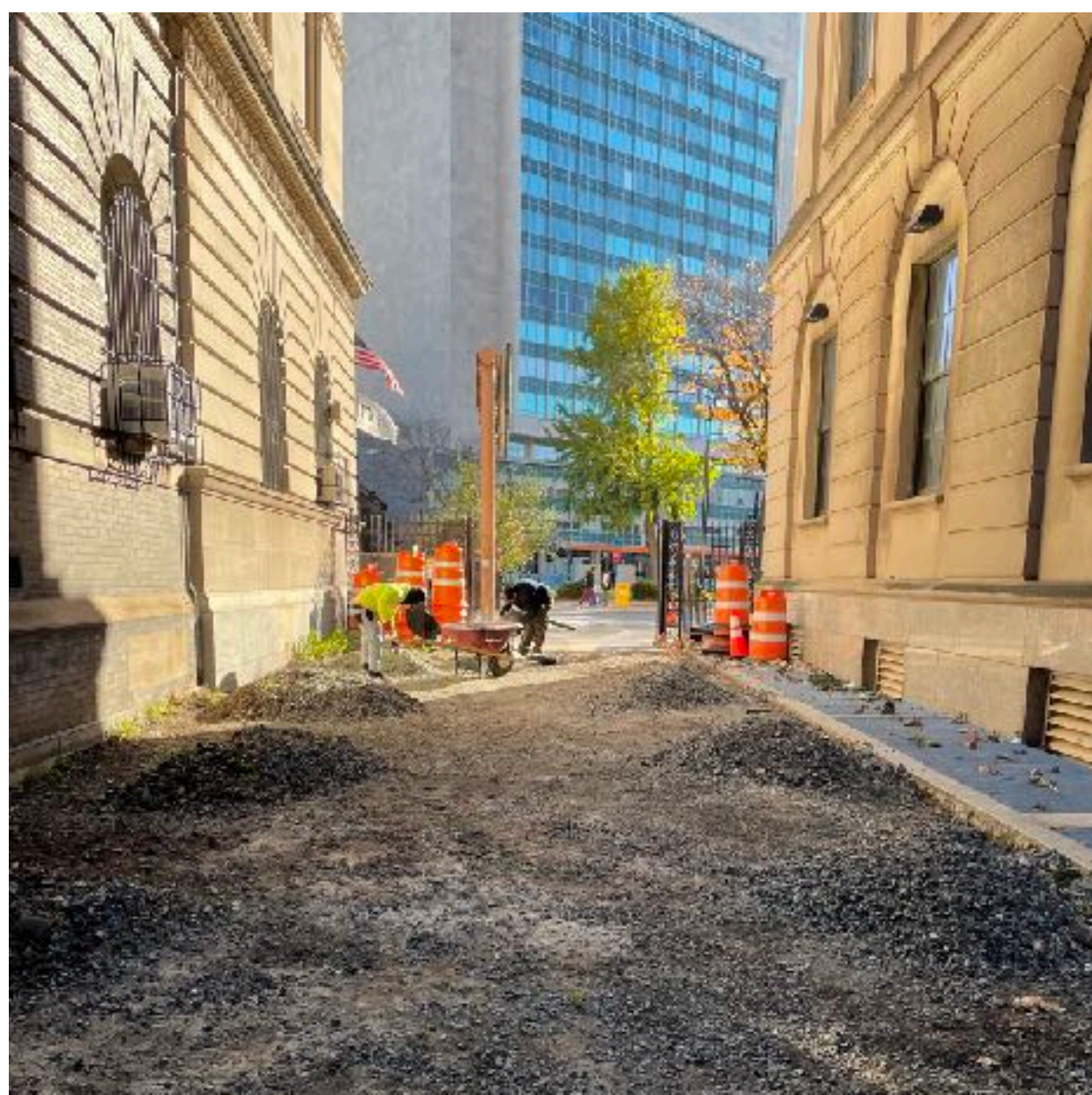
Approx. 16 arches  
4" cedarwood  
primed on white for weather  
painted on 16 different colors



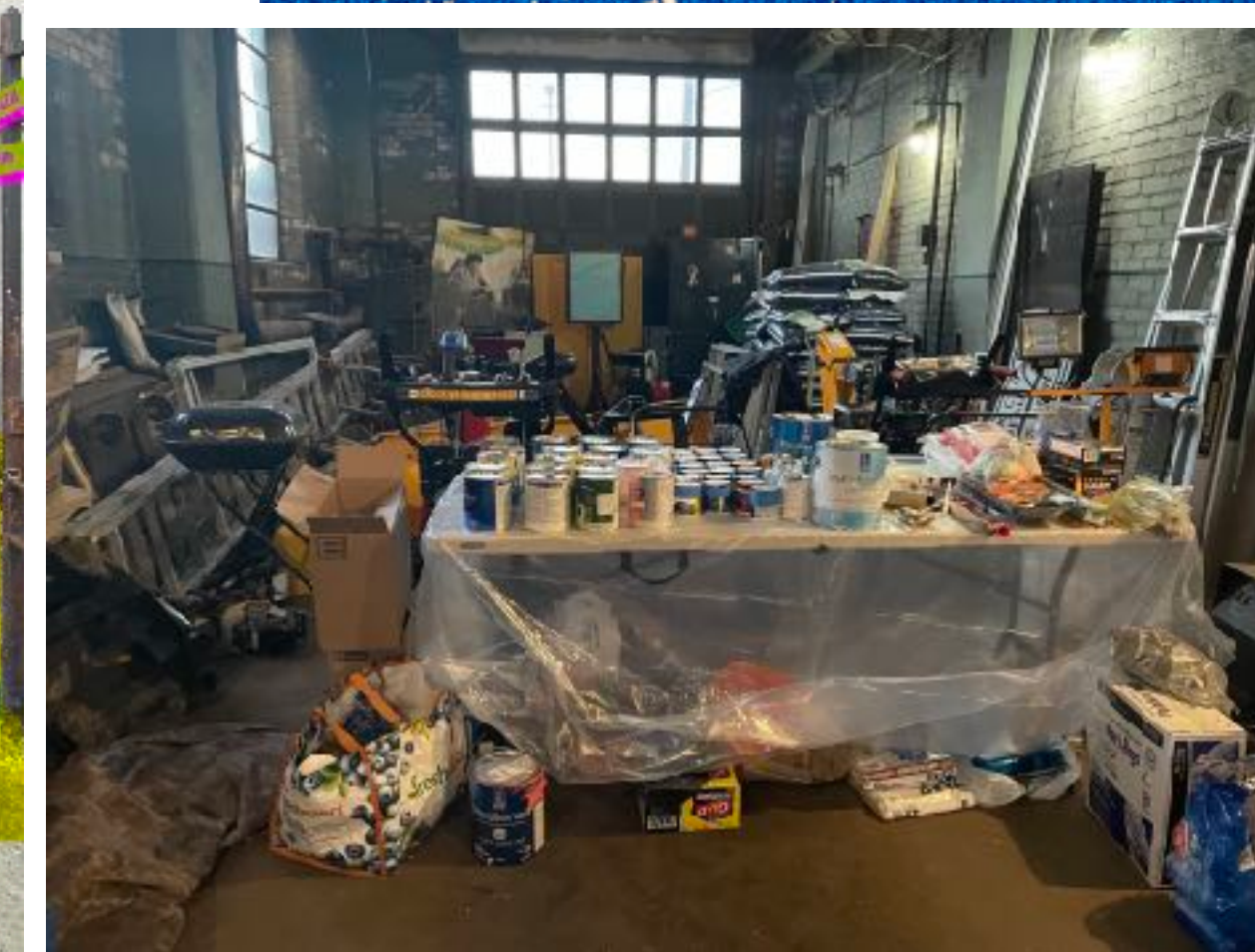
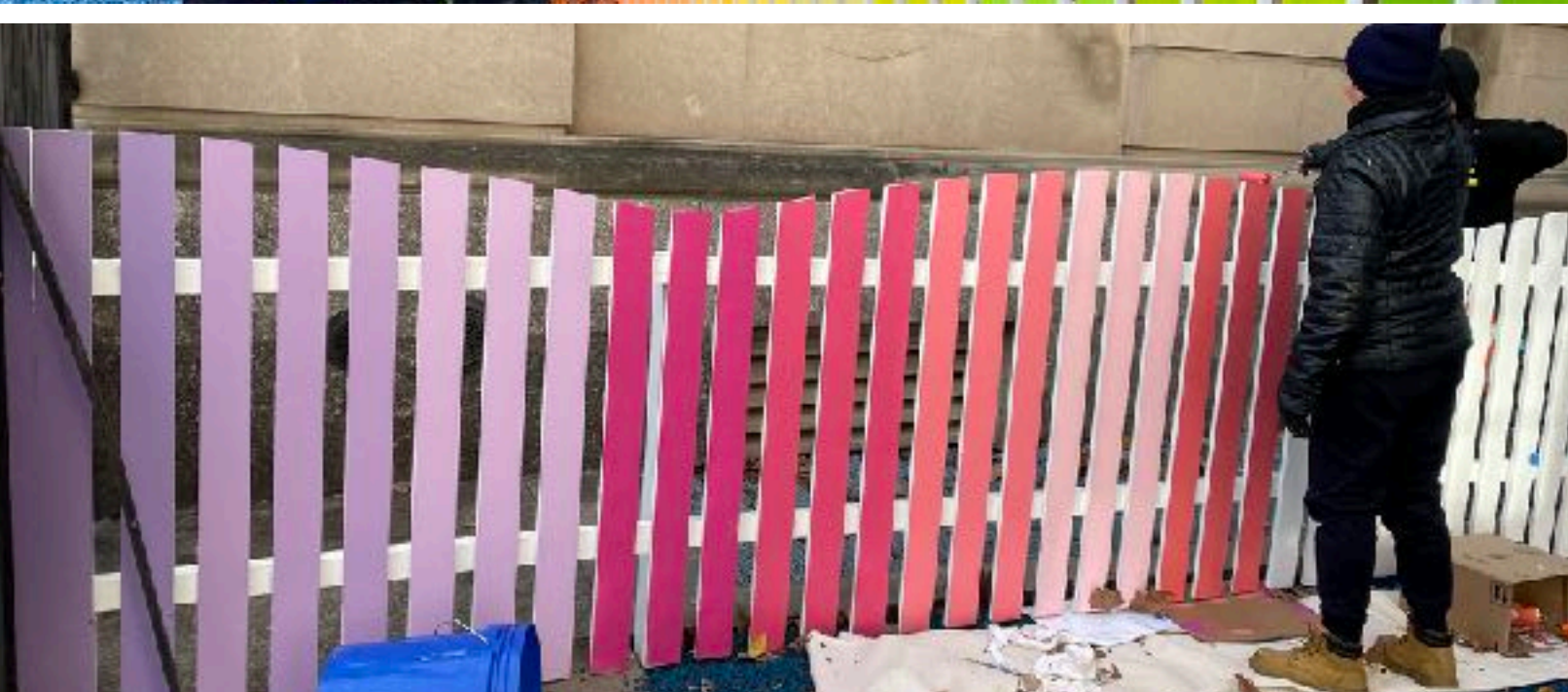




PROCESS











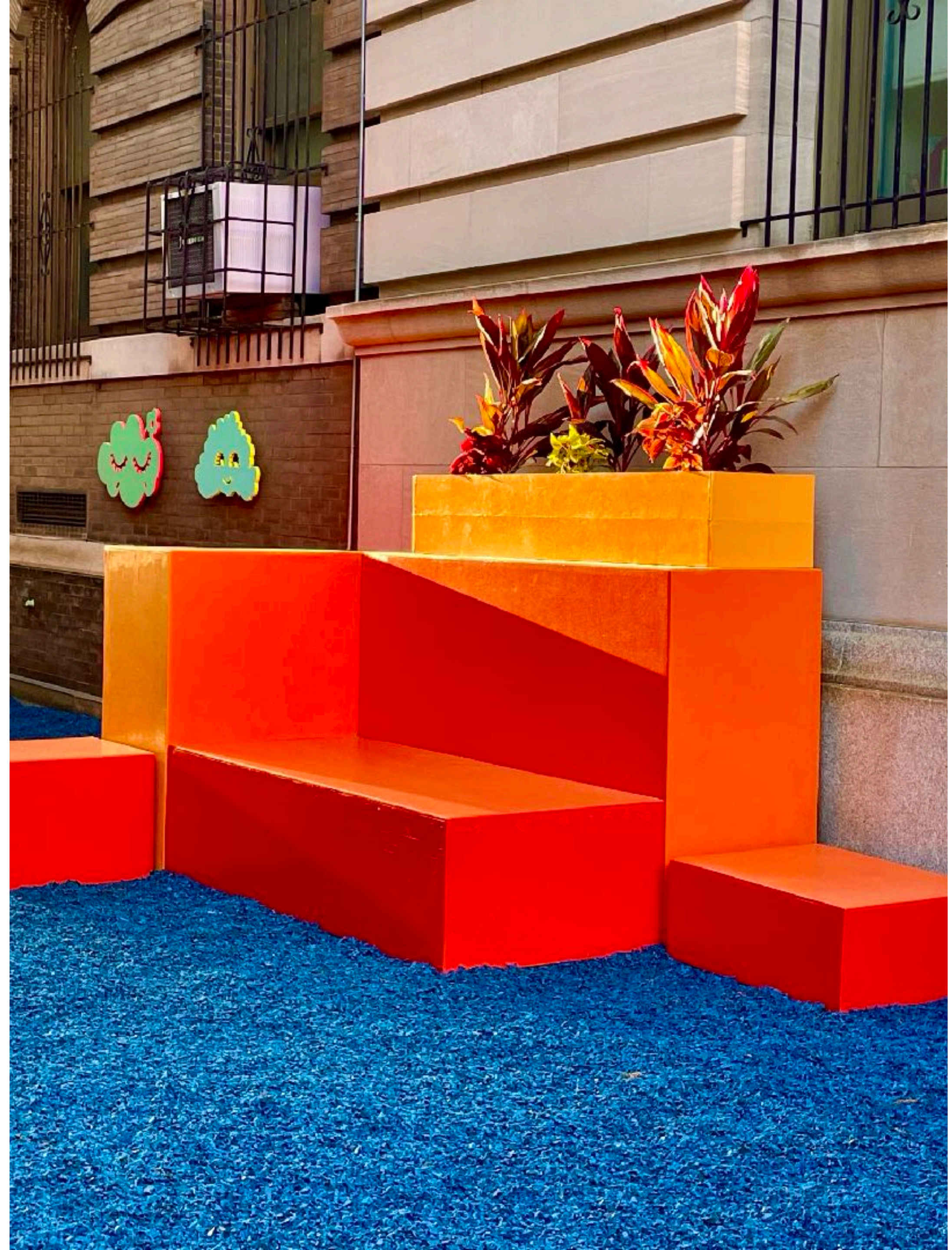






# SPECTRUM OF JOY

At Sunset









# SPECTRUM OF JOY

At night



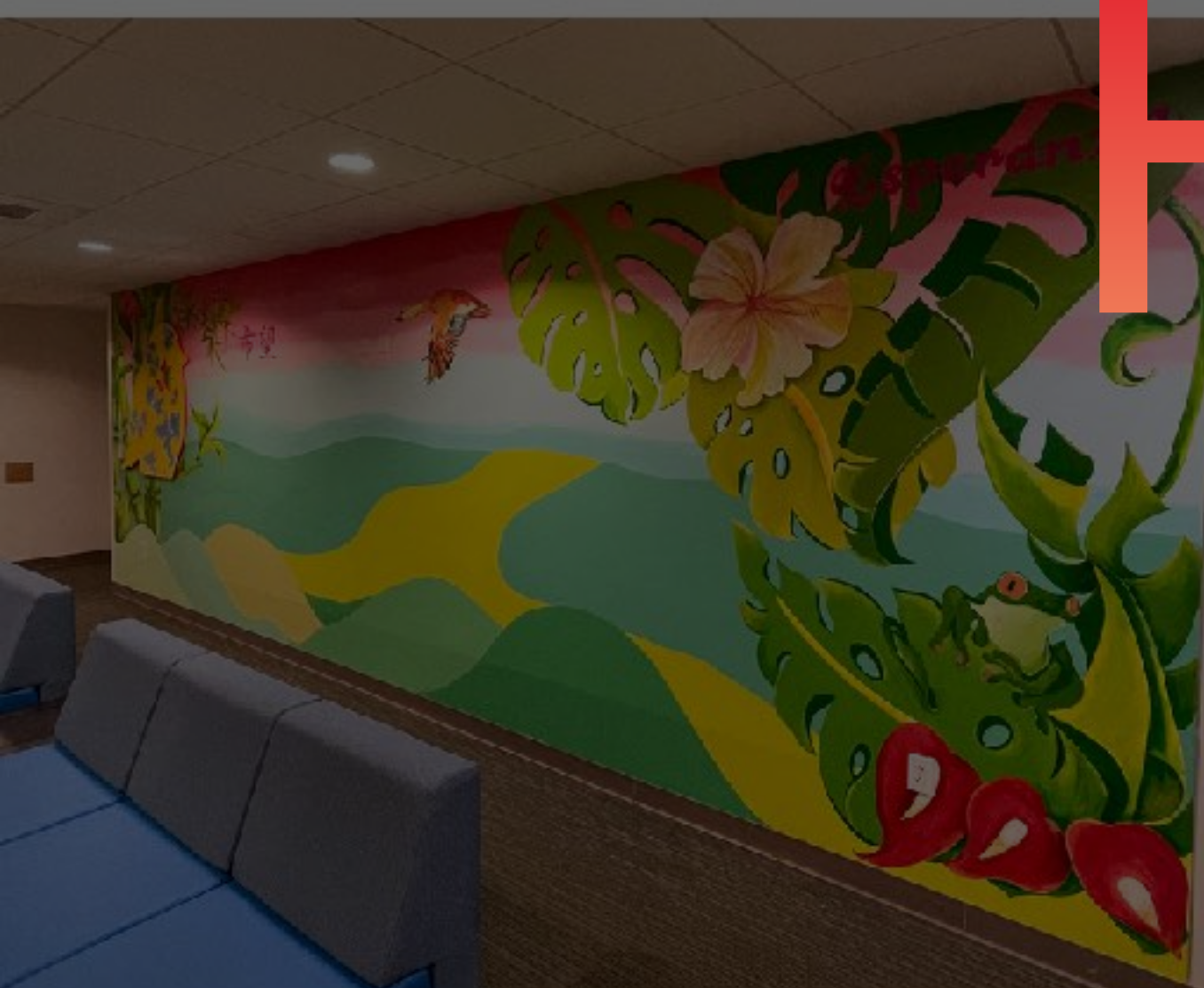




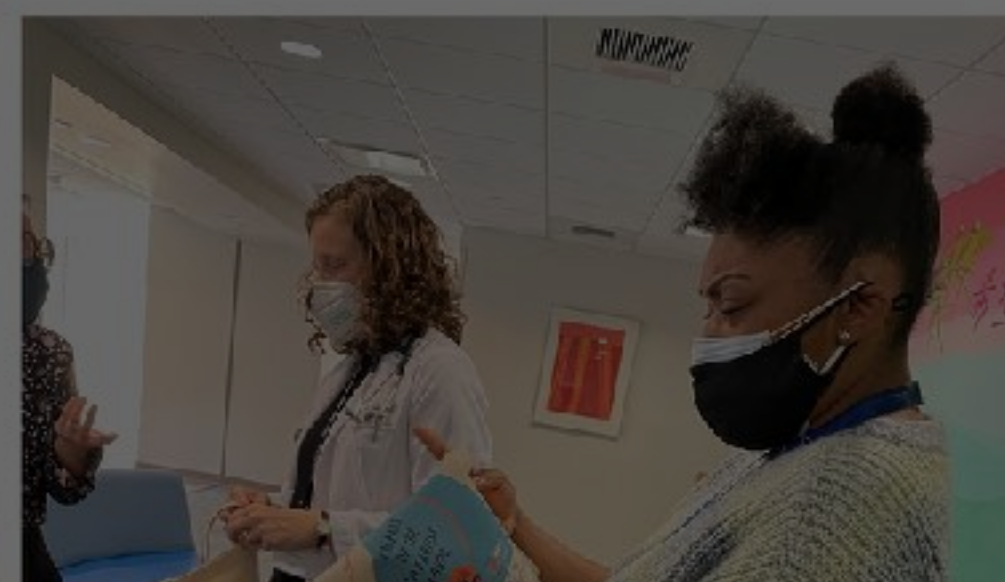
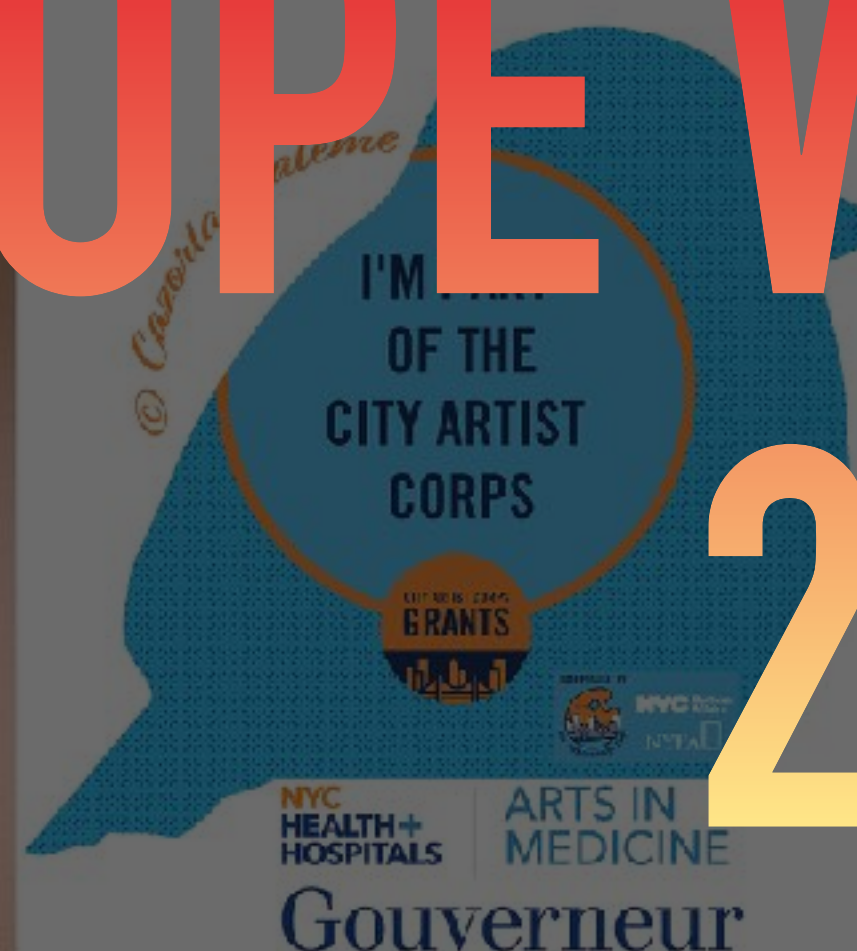








# HOPE WHISPERS 2021

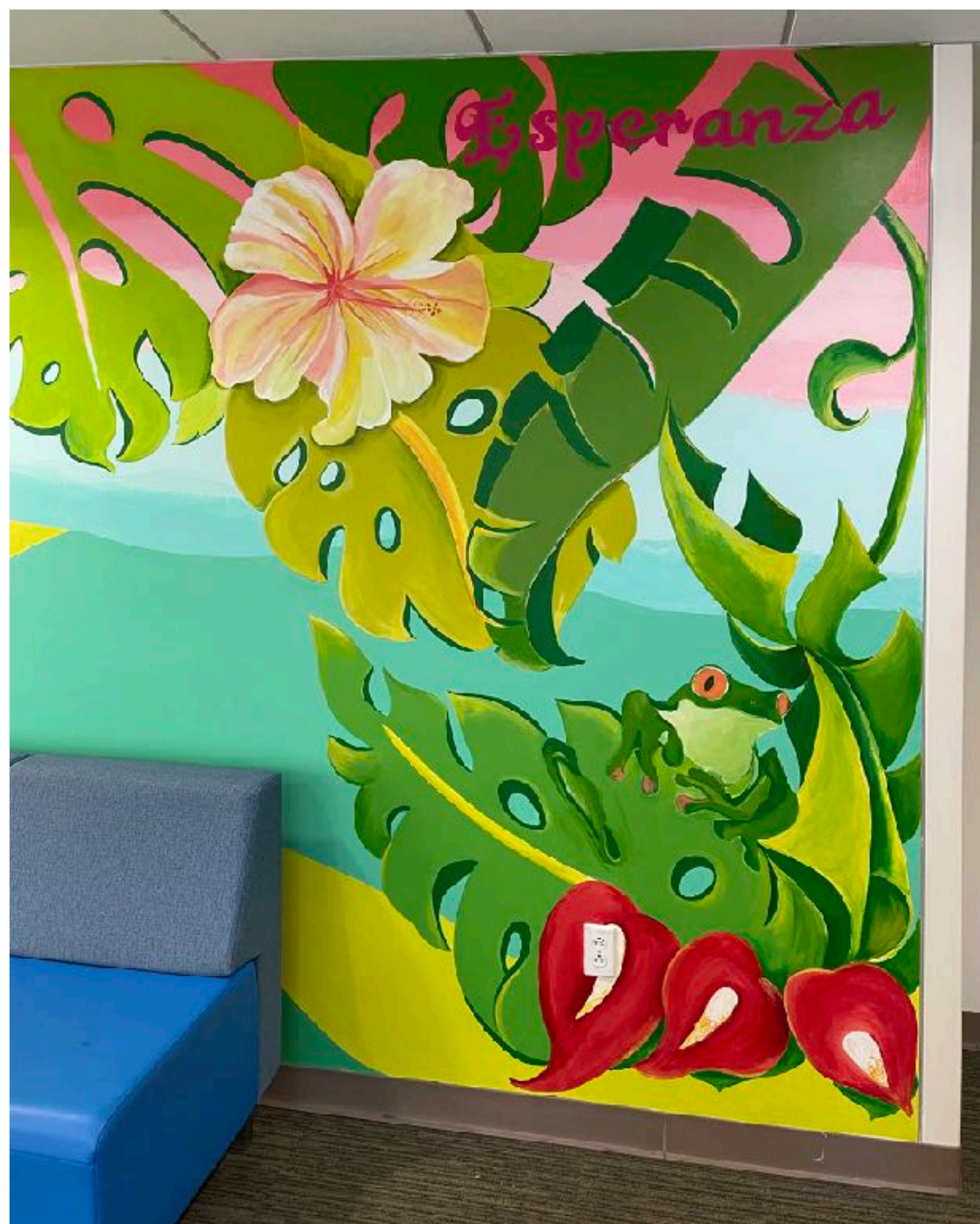
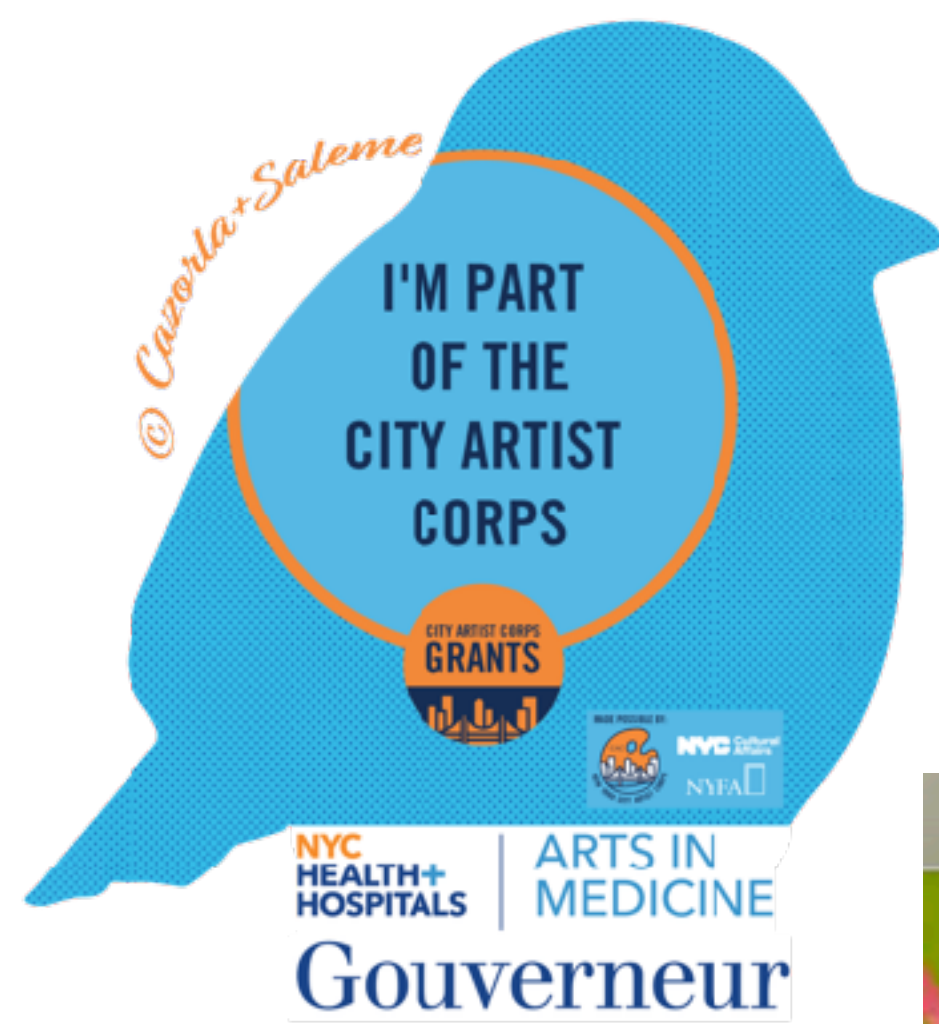




A PERMANENT SURFACE MURAL FOR NYC HEALTH + HOSPITALS/ GOUVERNEUR HOSPITAL  
PLYWOOD, ACRYLICS, ON WALL | 22 FEET LONG BY 8 FEET HIGH









# ONCE YOU HEAR ME, YOU WON'T FORGET ME

## 2017 – 2019





ONCE YOU HEAR ME, YOU WON'T FORGET ME  
GOUVERNEUR HOSPITAL, NEW YORK CITY  
2019

A PERMANENT 3D MURAL FOR NYC HEALTH + HOSPITALS  
PLYWOOD, ACRYLICS, ON WALL, SIZE VARIABLE







Encanto









**Community  
Mural  
Project  
Unveiling**

*Bellevue  
Blossoms*

by  
Nancy Saleme &  
Patricia Cazorla

Wednesday  
Dec. 11, 2019  
3 - 4 PM

**BELLEVUE  
BLOSSOMS  
2019**

NYC Health + Hospitals/  
Bellevue  
462 First Avenue  
New York, NY 10016

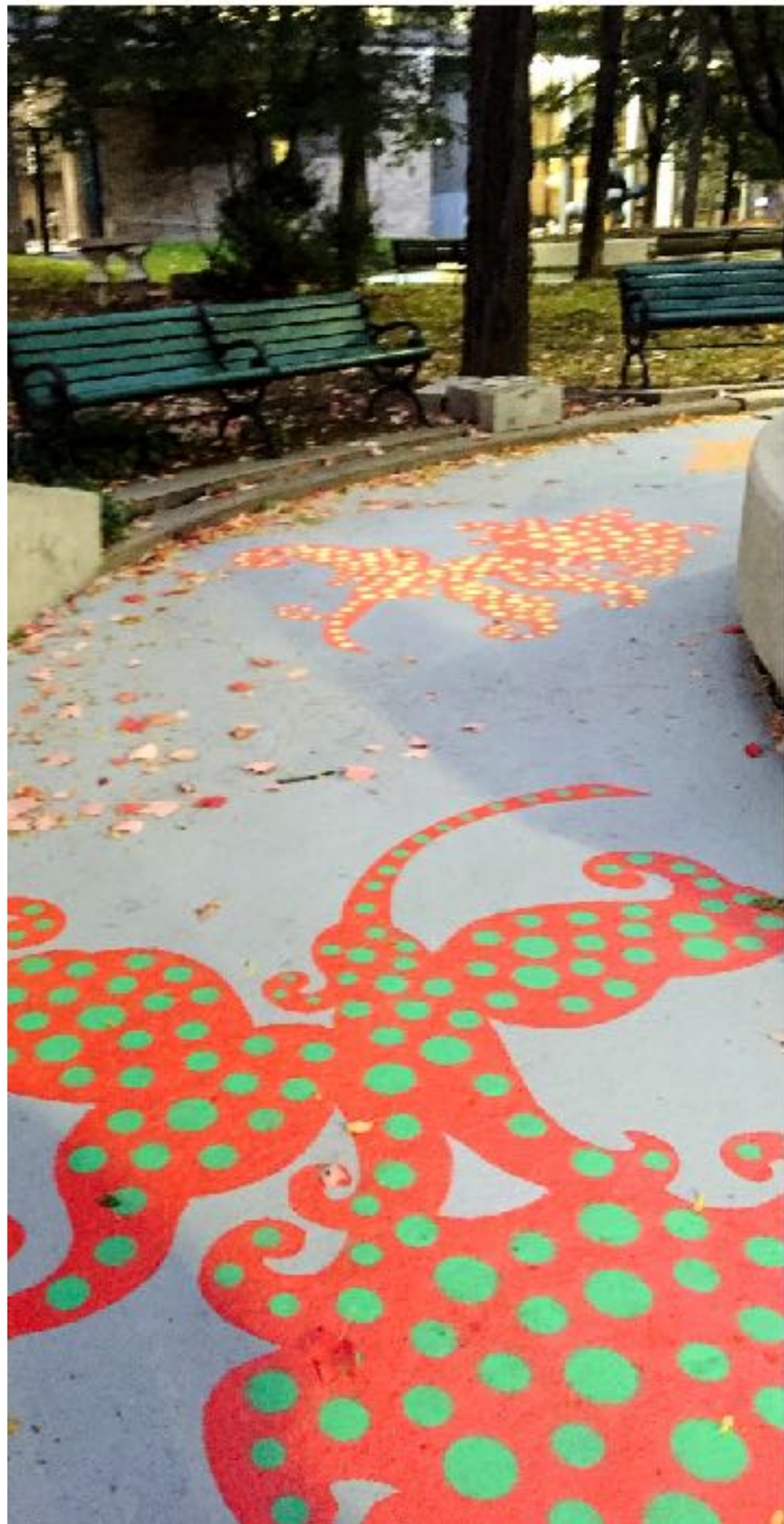
NYC  
HEALTH+  
HOSPITALS

Bellevue















The background features a gradient of red and blue. Overlaid on this are several green, stylized floral or leaf-like cutouts. These cutouts have a layered, paper-like appearance with some blue and red visible at the edges. The text is centered over the image.

# WRAPPING WEAVER STREET

## 2019







## WRAPPING WEAVER ST, 2019 - NEWARK

ACRYLIC ON CONCRETE, 2,000 SQFT SURFACE

This public art intervention was commissioned by 4Corners Public Art with the support of Invest Newark, Newark Downtown District (NDD), Newark Arts, RBH Group, and Paramount Assets.

Wrapping Beaver Street is an imprint of Downtown Newark's urban history. This ground mural depicts traditional African patterns incorporated into our own drawing patterns, giving a new dimension to this public piece and envisioning a celebration of the community's heritage.





A photograph of two women sitting on a wooden scaffold in front of a vibrant, colorful mural. The mural features stylized buildings in yellow and purple, with text like 'KOHLE', 'ST CLAIR', and 'Vida' in various fonts and colors. The woman on the left is wearing a black t-shirt and sunglasses, while the woman on the right is wearing a black long-sleeved shirt, a white apron with 'INDUSTRY' written on it, and sunglasses. They are both smiling and looking towards the camera. The overall scene is bright and artistic.

# THREADING A DREAM

## 2018



# THREADING A DREAM, 2018 - MEAD LIBRARY, SHEBOYGAN, WI

ACRYLIC, VINYL, LED LIGHT, AND CUSTOM MDO, 28 FEET BY 12 FEET















ARARAUNA  
2018







# PROCESS









GARMENT DISTRICT PLAZAS NYC:  
BROADWAY, BETWEEN 41<sup>ST</sup> AND 39<sup>TH</sup> ST.

**Ararauna** was commission by  
the public art program:  
Urban Garden / NYC Garment District  
Alliance and DOT Arts

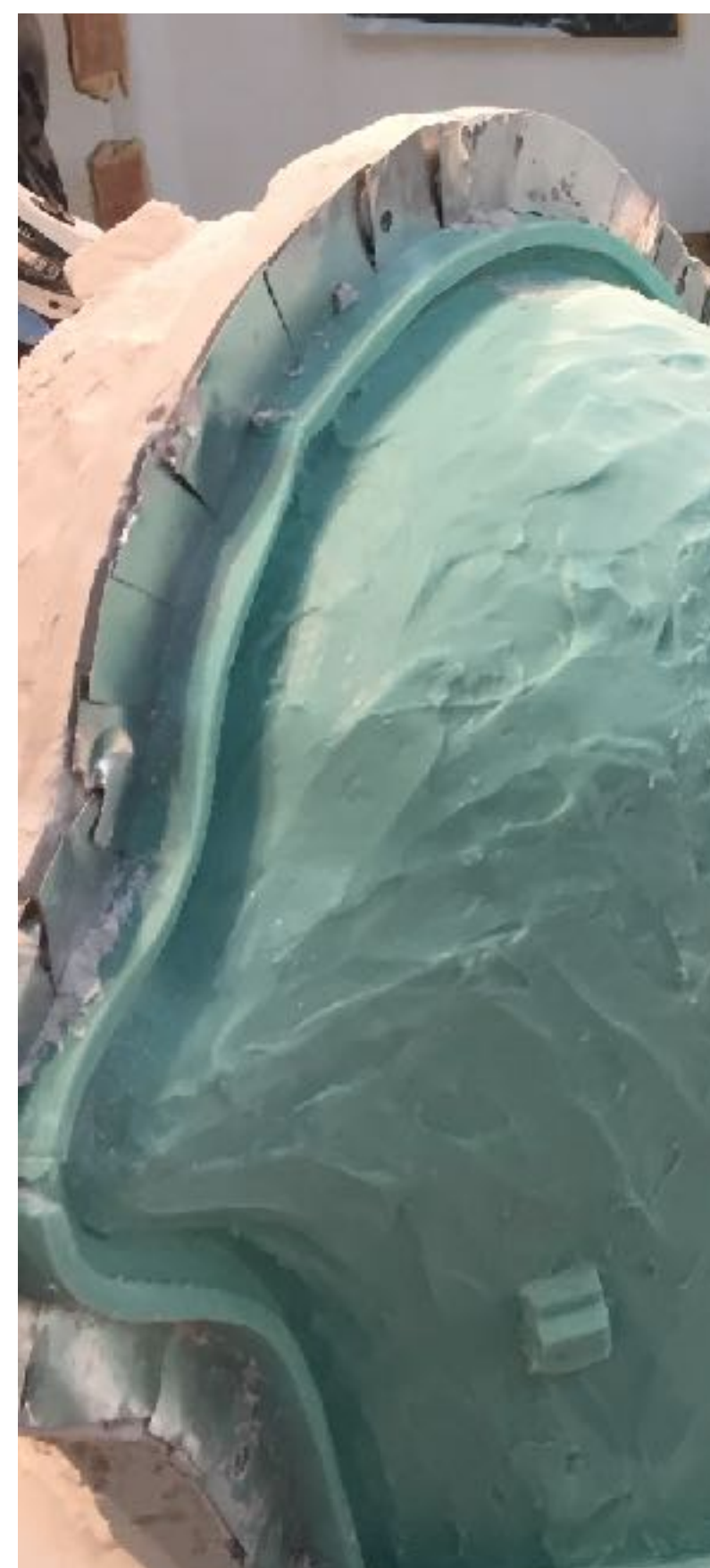
The piece is named for the South American parrots that were mysteriously introduced into the city of Caracas in the 1990's, and have managed to thrive in the urban center. Using a color palette selected from nature to depict soothing silhouettes of tropical flora and fauna, the piece creates a unique space for meditation and reflection, and brings a message of environmental awareness and peace and hope to the Urban Garden.





[illegible]







FLYING HIGH FOR EQUALITY, 2017  
JOYCE KILMER PARK, BRONX, NY

Resin and fiberglass / acrylic and vinyl on MDO  
37" h. x 64" d. x 35" w. each sculpture, panels size variable







NYC Parks





The background image shows a grand, multi-level atrium. It features ornate black metal railings with wooden handrails on the upper levels. The ground floor is furnished with several brown leather armchairs and a large, lush green plant in the center. The architecture is classical, with white columns and a high ceiling. The overall atmosphere is elegant and sophisticated.

# TAKING OFF 2018



# ***Taking Off*** **2019**

**Acrylic, vinyl, LED light, and custom  
Birch wood**

This project celebrates the grandeur of the Hahne's building by creating a visual metaphor that elevates the spirit of every visitor at Launch Pad. The artwork was inspired by the 18<sup>th</sup> Century European style, Rococo. Specifically, from Venetian painter Giovanni Battista Tiepolo's (1696-1770) masterpiece The Glorification of the Barbaro Family, ca. 1750, collection of The Metropolitan Museum of Art in New York City. The artists focused on Tiepolo's vibrant color palette and light, simplifying his style while upholding his elegance.





