

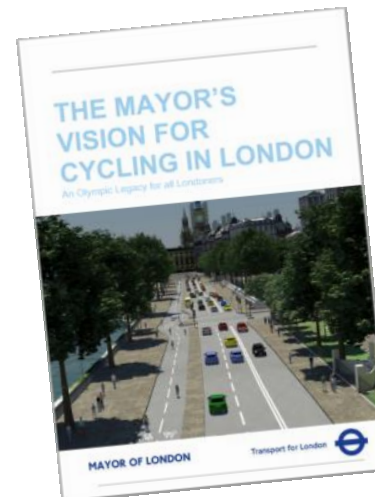
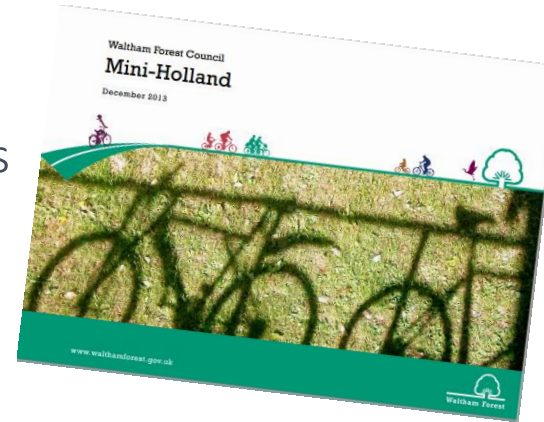
# Enjoy Waltham Forest

Jon Little



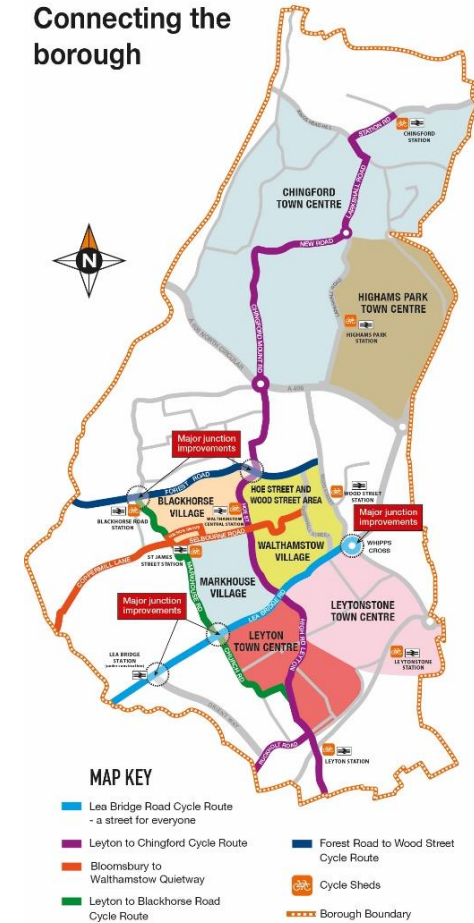
# Waltham Forest Mini-Holland

- Part of the Mayors Transport Strategy
- Competition open to all outer London boroughs
- Scope of bid was to include:
  - A world class commuter route
  - A Main Town Centre
  - Secondary Centres
  - A Network of Excellent Cycle Routes
  - Complementary Measures



## A NETWORK OF WALKING AND CYCLING ROUTES

Connecting the borough



# Waltham Forest

- One of the 18 outer London boroughs, in north-east London
- Population of about 280,000 people
- Young average age (32 years)
- A growing borough with lots of development and regeneration
- A host borough of London 2012 Olympics
- Diverse borough with significant eastern European and Asian populations



# Why Waltham Forest?

- An existing car dependent culture and a growing population reducing pollution and encouraging healthy, active lifestyles
- Opportunity to redesign streets and make them better for everyone
- World class cycling and walking links from all parts of the borough to work, education, recreation, nature
- Encouraging people from all communities to walk and cycle more, reducing car use
- Supporting growth and development in a sustainable way



Frederick Bremer, Walthamstow



John Kemp Starley, Coventry



Boris Johnson, London



Edie and Otis, Leyton

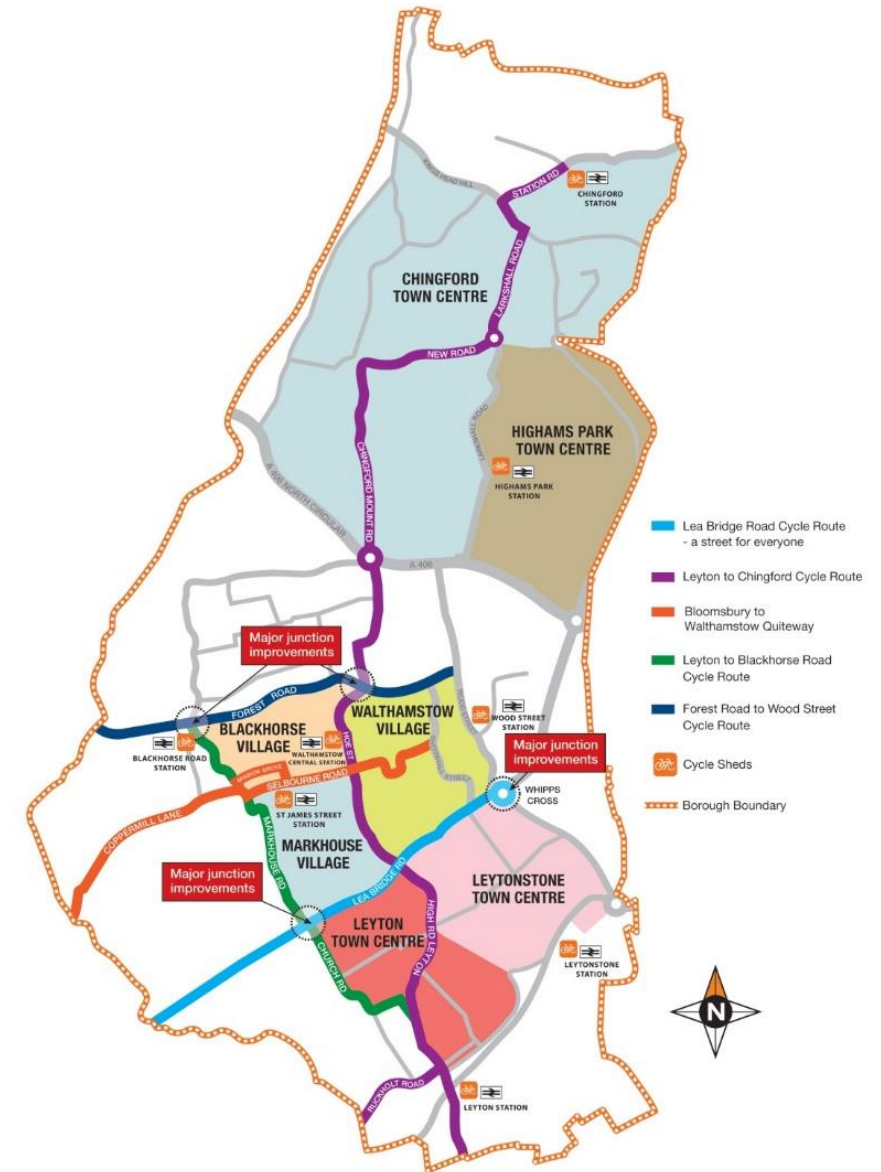
# Why Waltham Forest?

- Encouraging people from all communities to walk and cycle more, reducing reliance on private vehicles
- Making our streets better places to be for everyone
- Healthier streets- reducing pollution and encouraging healthy, active lifestyles
- The entire borough is designated an Air Quality Management Area

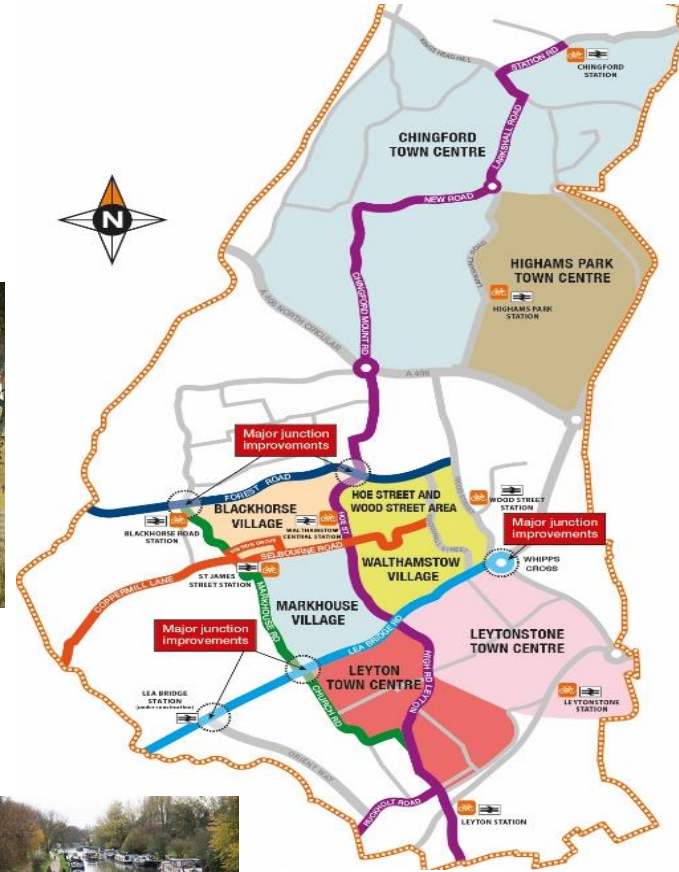


# Network of routes

- Continuous, joined up network
- Doesn't give up at the difficult places
- Links villages and town centres together for longer journeys
- Direct links into the wider London cycling network with continuous segregated/low traffic journeys possible into central London
- Connects the key destinations in the borough and those nearby



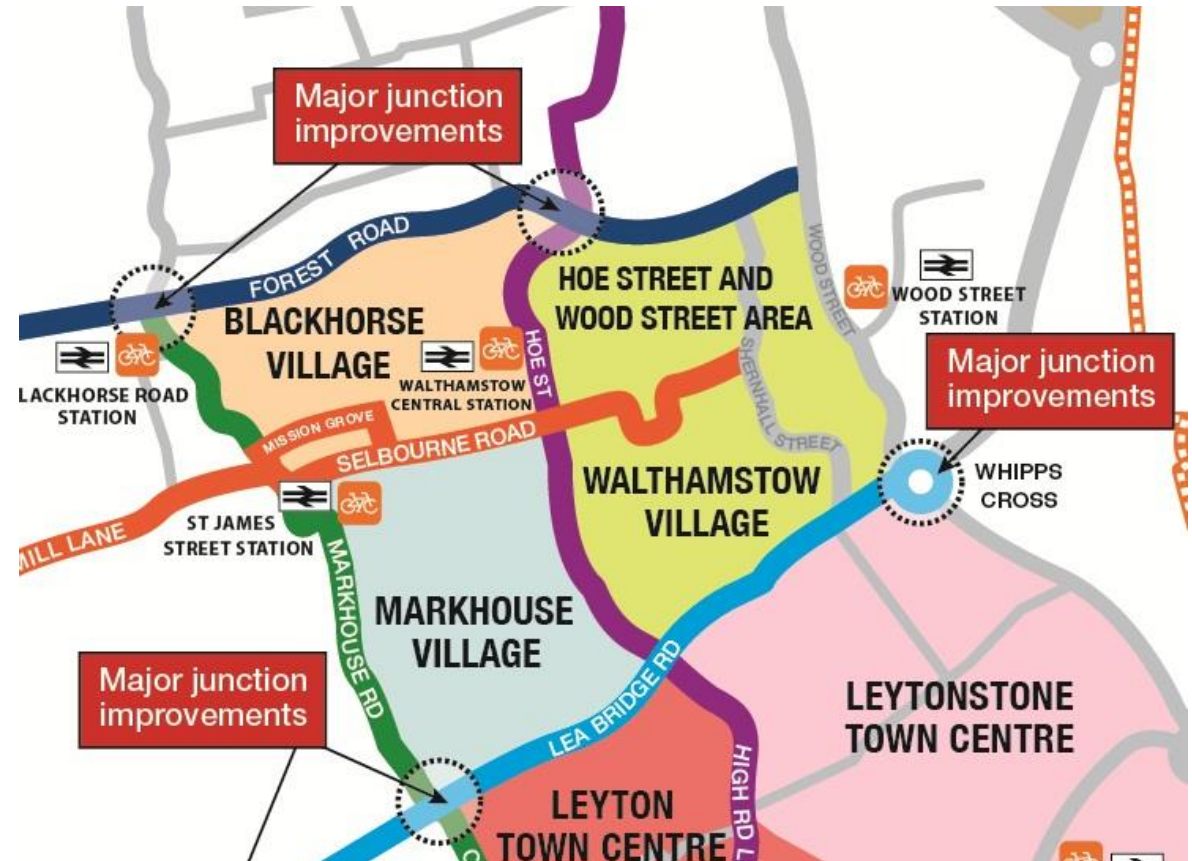
# Network of routes



# The Villages

Walthamstow Village, Markhouse Village, Blackhorse Village and Hoe Street/Wood Street

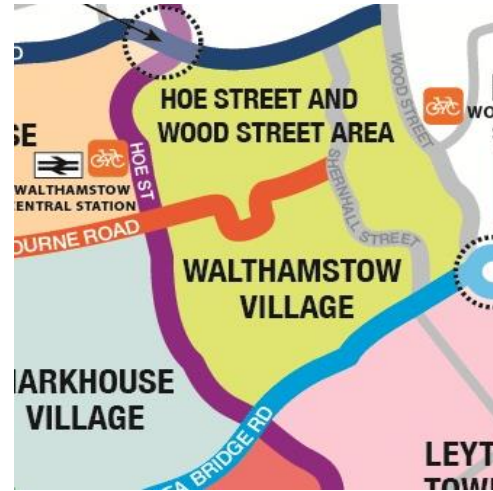
- A cycling (and walking) grid of  $\leq 400\text{m}$
- A local network that is protected from traffic conditions on main roads
- Wayfinding for short and long journeys
- Direct access into local and London cycle network
- Cycle parking- at stations, shops and at home





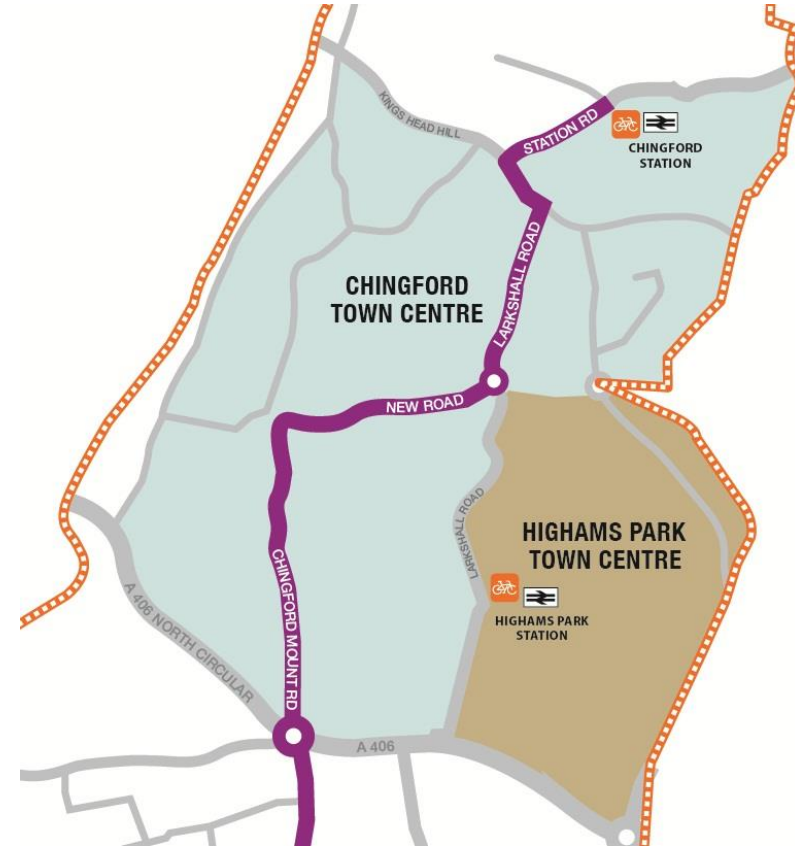
# The Villages

Walthamstow Village local connections

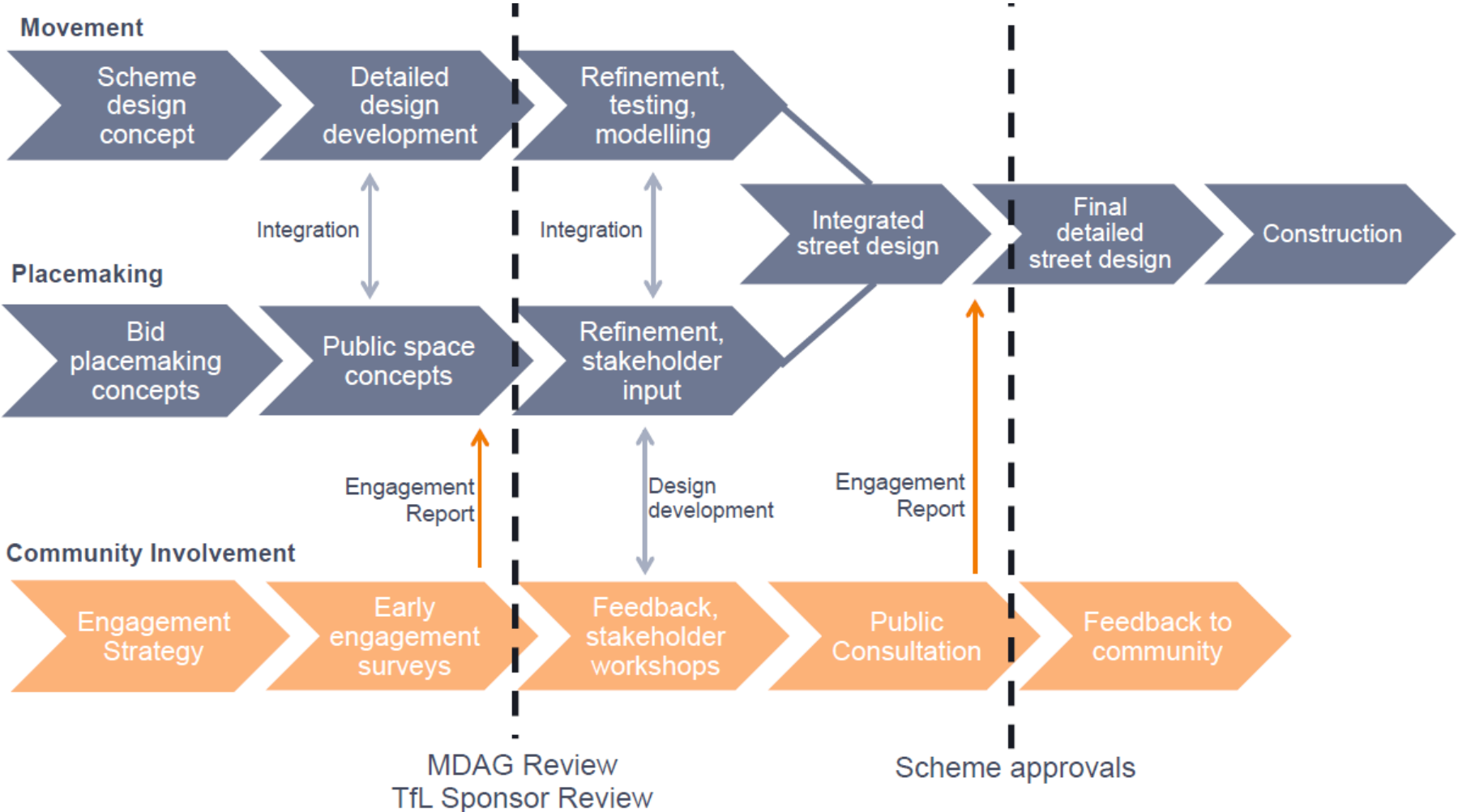


# The Town Centres

Chingford, Highams Park, Leyton, Leytonstone



# Design process



# Resources and documentation

The screenshot shows the homepage of the Waltham Forest website. At the top, there is a navigation bar with links for HOME, ABOUT THE PROJECT, WORK NEAR YOU, ROAD CHANGES, GET INVOLVED, and NEWS. The main banner features the slogan "WALK CYCLE ENJOY" and a prominent advertisement for "CYCLE TRAINING IN WALTHAM FOREST SIGN UP FOR FREE". Below this, there are several smaller sections: "BECOME A CYCLE HUB USER", "FREE BIKE MAINTENANCE WORKSHOPS", and "FREE CYCLE TRAINING". A "SIGN UP NOW" section includes a form with fields for name, email, mobile number, and postcode. There is also a "TWITTER" section with a tweet about digital champions. At the bottom, there is a footer with copyright information and contact details.

The cover of the "LONDON CYCLING DESIGN STANDARDS" document is purple. It features icons of various bicycles and a Transport for London logo. The text includes "MAYOR OF LONDON" and "TRANSPORT FOR LONDON".

The cover of the "2020 VISION" document is orange. It features the text "CYCLING IN THE LONDON BOROUGH OF WALTHAM FOREST 2015 - 2020" and an illustration of a street scene with people walking and cycling. Logos for Transport for London, Mayor of London, and Waltham Forest are at the bottom.

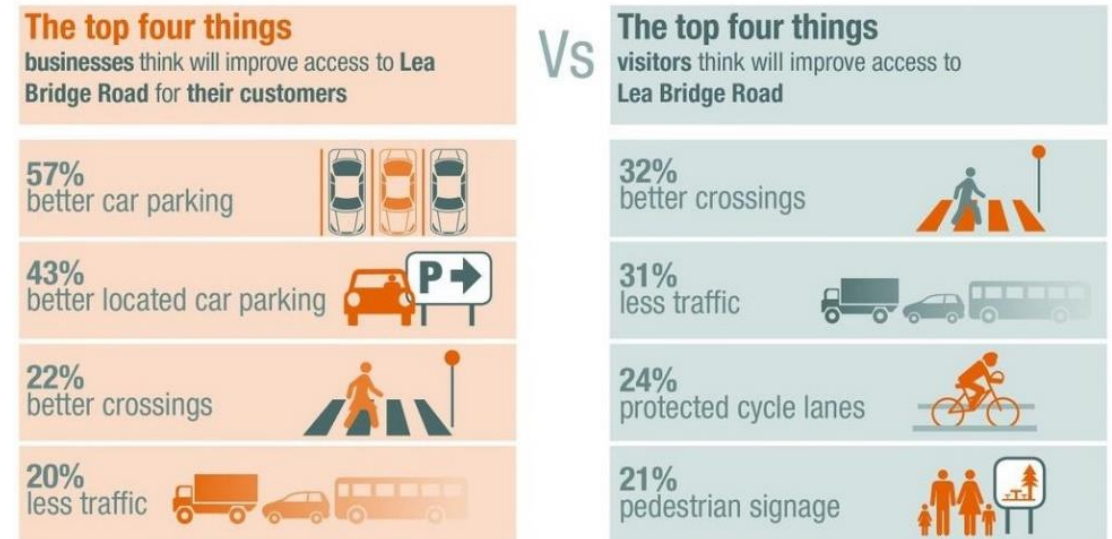
The cover of the "Waltham Forest Council Mini-Holland" document is green and white. It features the text "December 2013" and an illustration of a grassy field with shadows of bicycles. The Waltham Forest logo is at the bottom right.

This block contains two document covers. On the left is "THE MAYOR'S VISION FOR CYCLING IN LONDON" with a photograph of a street. On the right is the "MINI-HOLLAND DESIGN GUIDE" with a photograph of two people cycling. Both covers feature logos for Transport for London and Waltham Forest.



# Project process

- Early engagement- resident meetings, Perception Survey
- Design workshops with residents and businesses
- Public consultation inc. drop-in sessions, walking audits
- Reporting process
- Statutory consultation
- Construction



# The Villages

Walthamstow Village, Markhouse Village , Blackhorse Village and Hoe Street/Wood Street

- Distinct urban villages with their own identities that are great places to walk and cycle
- Quiet green areas free of through traffic
- 20mph speed limit
- New public spaces and better shopping areas
- New places for informal socialising play
- Get to know your neighbours



# Walthamstow Village trial



*Handwritten notes from a consultation session:*

**SPRING IMPROVEMENTS!**

- Give residents day to day life physically moving about
- Get Lea Bridge into the street
- Some driving routes / more direct
- People getting businesses + imp
- Service chaos from deliveries
- Rat runs stopped elsewhere
- Speeding
- Cars about to the extent of Church Lane / The Street
- Feeling in + out of area
- Casualties - reservations about
- Access to areas
- Day or late
- Streets still can use Oxford Rd
- Cycle routes not distinct from Pedestrian routes

**CONCERNS**

- Less happy, pedestrianised, cafe culture
- Lots of parking space
- Shop as a pedestrian
- Oxford Rd very quiet
- Quiet roads, safe pedestrian
- Fewer cars, fewer vehicles
- Still containing road - people playing
- Increased pedestrian traffic in area
- Squat
- No traffic noise at night - sleep with limited gas
- Felt like a village





# Walthamstow Village trial

NEWS

Controversial cycling trial set to cause 'mass disruption'



Controversial cycling trial set to cause 'mass disruption'

First published Friday 26 September 2014 in News  
Last updated 21:25 Friday 26 September 2014

The trial of a multi-million pound cycling scheme aimed at improving road safety and boosting the economy has started today.

Several roads in Walthamstow have been closed, blocked and re-directed, preventing cars, motorbikes and some buses from carrying out routine journeys and parking.

**Matt Winfield**  
@MattWinfield2

Follow

@Walthamforest I think I love you. Mini Holland trial starts



RETWEETS  
8

FAVOURITES  
3



10:15 am - 26 Sep 2014



**Scott Davies**  
@scottdavies

Follow

Orford Rd is a genuinely joyful place today. Laughter, happy conversations with complete strangers. #miniholland



RETWEETS  
7

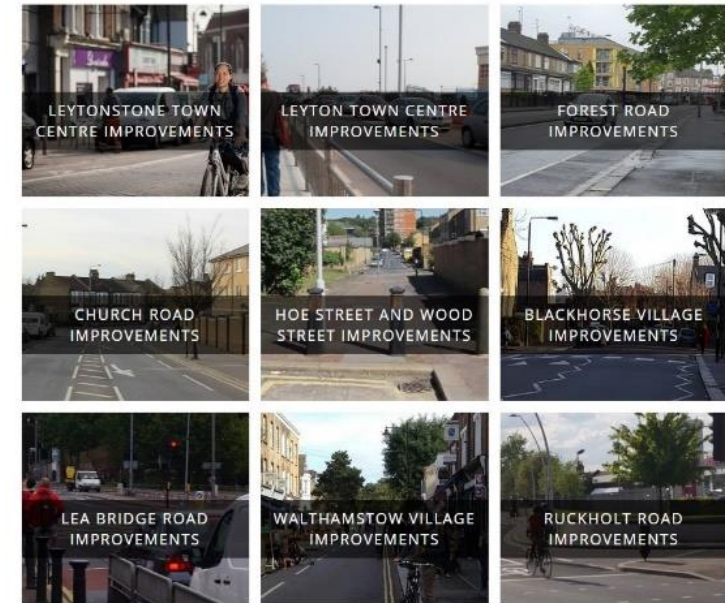
FAVOURITES  
6





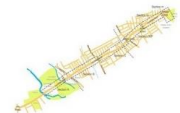
5:11 am - 27 Sep 2014

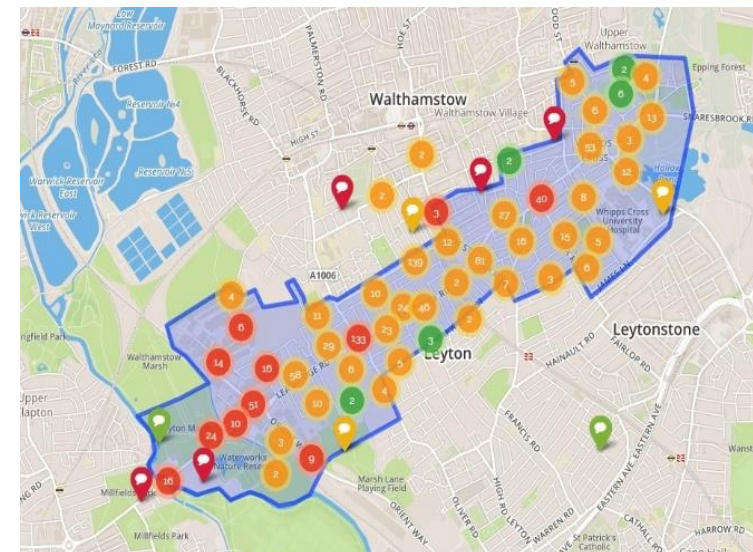
# Engagement

- Used on-line platform (website and consultation tool commonplace)
- It enables us to tell the entire project story
- Able to run multiple engagement/consultations at different stages at any one time
- We can provide much more detail and background for respondents

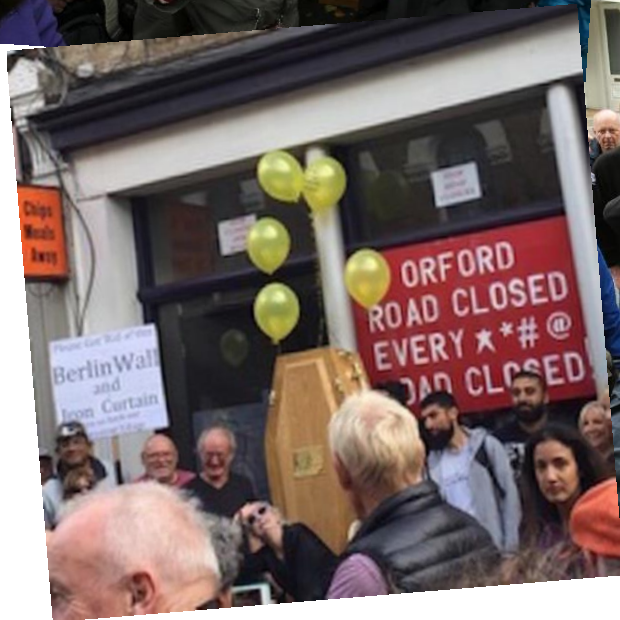


Lea Bridge Road Sections  
2 out of 8 are ready for your feedback


Section A	Section H	More Sections coming soon
 <p>This section of Lea Bridge Road runs from the borough boundary with Hackney to the junction of Limes Road. The proposals in this area aim to enhance the existing environment making this an improved destination for people to enjoy.</p> <p><a href="#">Section A Proposals</a></p>	 <p>The proposals for Whipps Cross take in a whole scale change to the way the roundabout operates with new public spaces incorporating elements of Epping Forest and major improvements to the bus facilities.</p> <p><a href="#">Section H Proposals</a></p>	 <p>The Lea Bridge Road Mini-Holland scheme covers approximately 2.5 miles of highway with varying character, uses and issues along the street. More sections will be published soon.</p> <p>Sign up to the Mini Holland Newsletter for updates.</p> <p><a href="#">Coming soon</a></p>



# What's the reaction been?



**NO TO MINI HOLLAND**



**Hunger Strike**

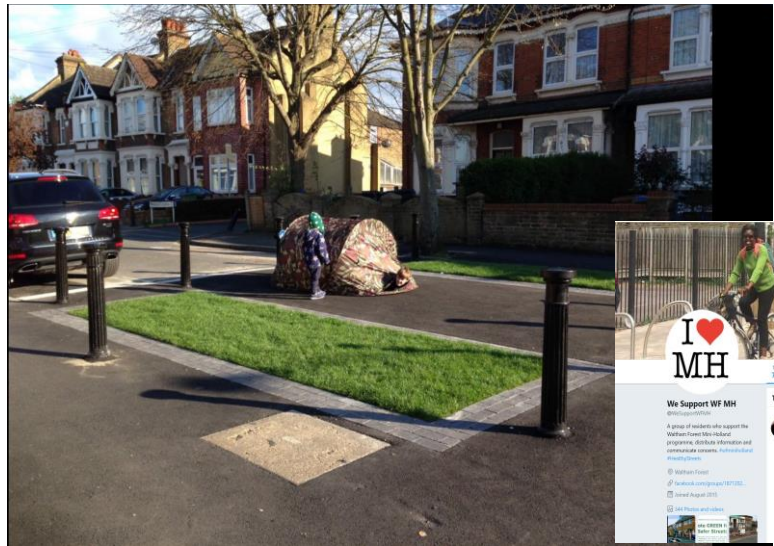
For the Removal of Mini Holland from Whaltham Forest Borough

**Dr. Nazir Ahmed** will carry on hunger strike till the end of Mini Holland Programme

Please come and join us: from **Tuesday 18th September 2018** to onwards at **9:00am** next to **ESSO PETROL STATION** 727A, Lea Bridge Road, Leyton E17 9DZ

For more information please contact: Tel: 0772 021 9636 / 0794 340 0963

# What's the reaction been?



# Outcomes



# Outcomes



# outcomes



# Outcomes

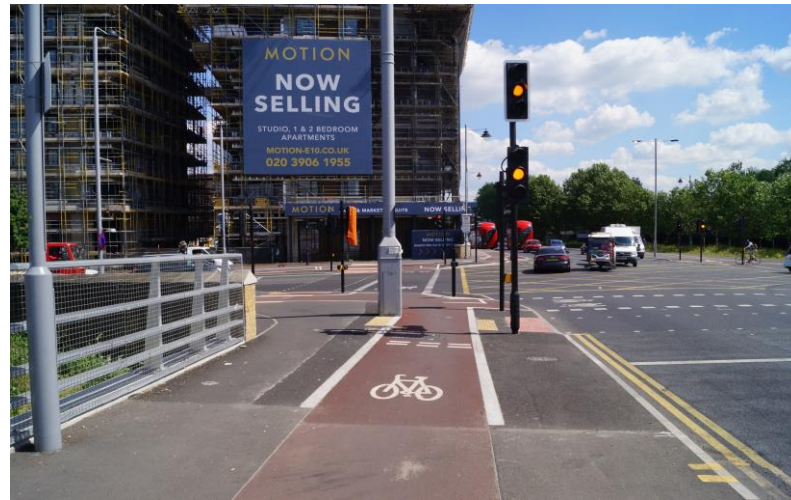




# Outcomes



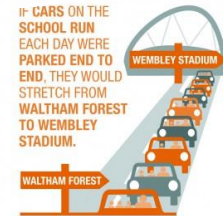
# Outcomes



# Complementary measures



# Complementary measures



WalthamForest events @LBWFevents Jun 21  
Come and say hello at our Mini-Holland stand at Leyton Jubilee Park today walthamforest

**NO ORDINARY BICYCLE: JOHN KEMP STARLEY AND THE TWO-WHEELED REVOLUTION**  
30 August 2017 -

**New exhibition in Waltham Forest**

John Kemp Starley (1855 – 1901), born in Walthamstow, played a key role in the development of the modern bicycle. Starley's modifications to the 'safety' bicycle enabled more people than ever before to access this form of transport, leading to the 'bicycle craze' of the late 19th century. The exhibition explores Starley's developments, still reflected in bicycles today, and celebrates his legacy in terms of the bicycle's unimagined social impact on health, social mobility and sustainability throughout the decades both here and abroad.

**When**  
Saturday 9 September 2017 - Sunday 25 February 2018  
All day

**Where**  
Vestry House Museum

**Cost**  
Free

[Twitter](#) [Like 5](#) [+](#) [Share](#)

**EVENTS**

**OPEN SPACES RIDE – 2ND SUNDAY EVERY MONTH**  
13 May 1:00 pm - 5:00 pm

**FEEL GOOD WALK – CHINGFORD**  
15 May 11:00 am - 12:00 pm

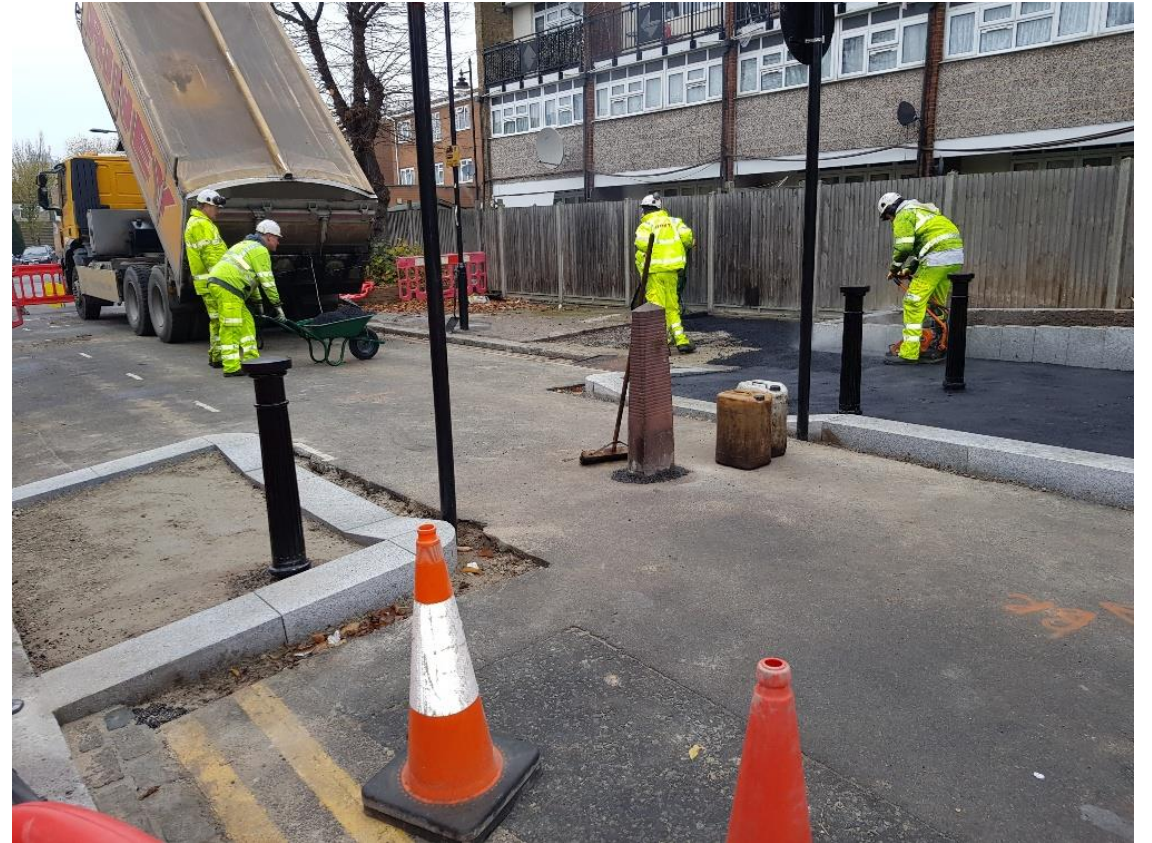
**FEEL GOOD WALK – LEYTON**  
16 May 11:00 am - 12:00 pm

**FEEL GOOD WALK – LETTONSTONE**  
17 May 11:00 am - 12:00 pm

**DR BIKE**  
19 May 11:00 am - 2:00 pm

# Progress

- Programme largely complete
- 43 streets closed to motor traffic
- 1062 20 mph roads
- New public spaces
- 350 new trees and 15 pocket parks
- 22 kms of new cycle track
- 8 cycle parking hubs at stations
- 300+ cycle hangars
- Over 1500 new on street spaces



# Outcomes

## University of Westminster Study

- Study comparing people living in MH boroughs with others
- Suggests an increase in walking and cycling in MH boroughs esp. high dose areas
- Residents active 41 minutes a week more than those living in other areas
- Increase greater in walking (32 mins) than cycling (9 mins)
- Getting towards WHO and MTS targets

## TfL data

- Only outer London borough where more walking and cycling trips than private car

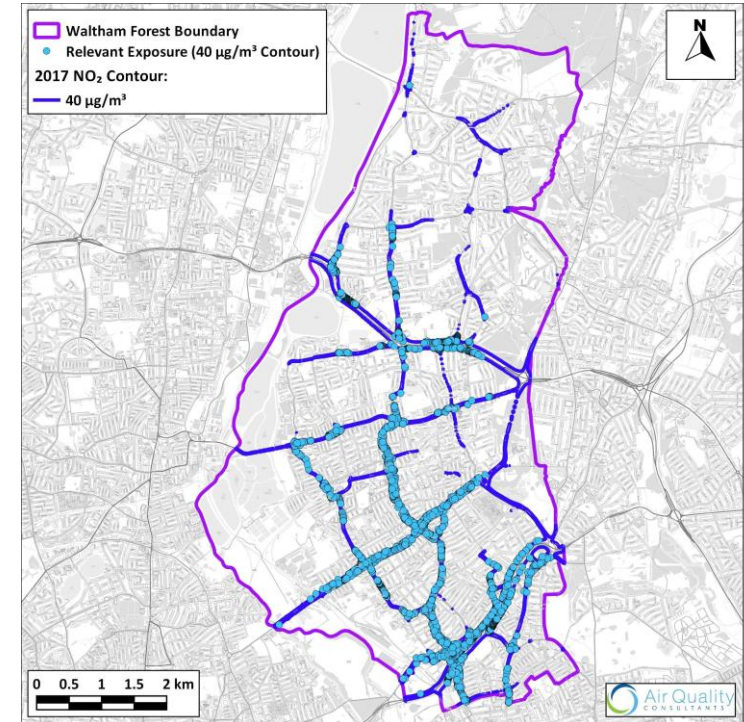
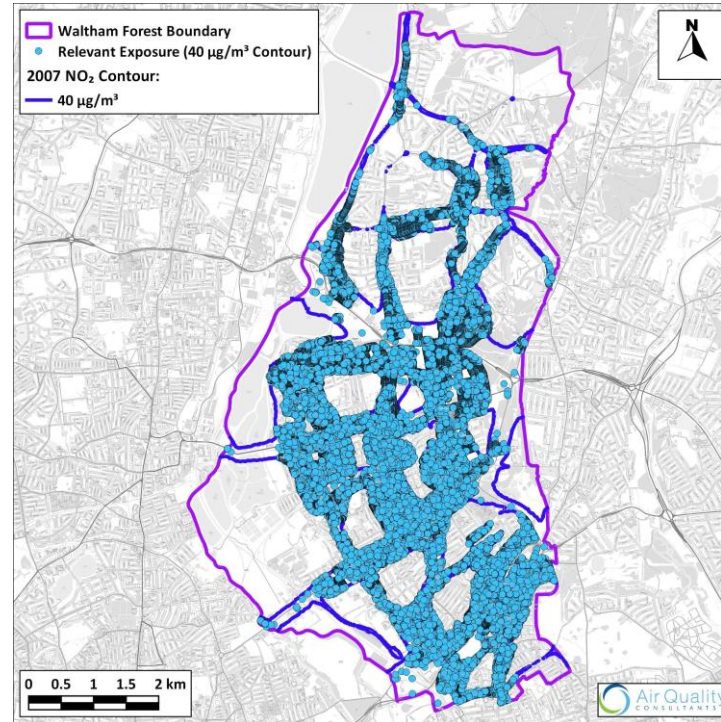
## Resident insight survey

- Amount of residents describing themselves as occasional and frequent cyclists has doubled



# Outcomes

## Kings College Air Quality Research Group Investigation



- Houses exposed to more than max EU rec levels of NO<sub>2</sub> down from 58,000 in 2007 to 6,300 in 2017
- Residents will live 7 months longer
- 5 year old children will live an extra 6 weeks from improvements, active school run could add another 3 weeks

# Outcomes

## Department for Transport

- Most active outer London borough 40% of adults walk five times a week (only second to City of London)
- Highest of outer London boroughs for cycling five times a week
- 6th highest in greater London (only inner London boroughs higher)







[jon@workwithbespoke.co.uk](mailto:jon@workwithbespoke.co.uk)

Twitter: [@bespokejon](https://twitter.com/bespokejon)

[Workwithbespoke.co.uk](http://Workwithbespoke.co.uk)